

T7S, R96W, 6th P.M.

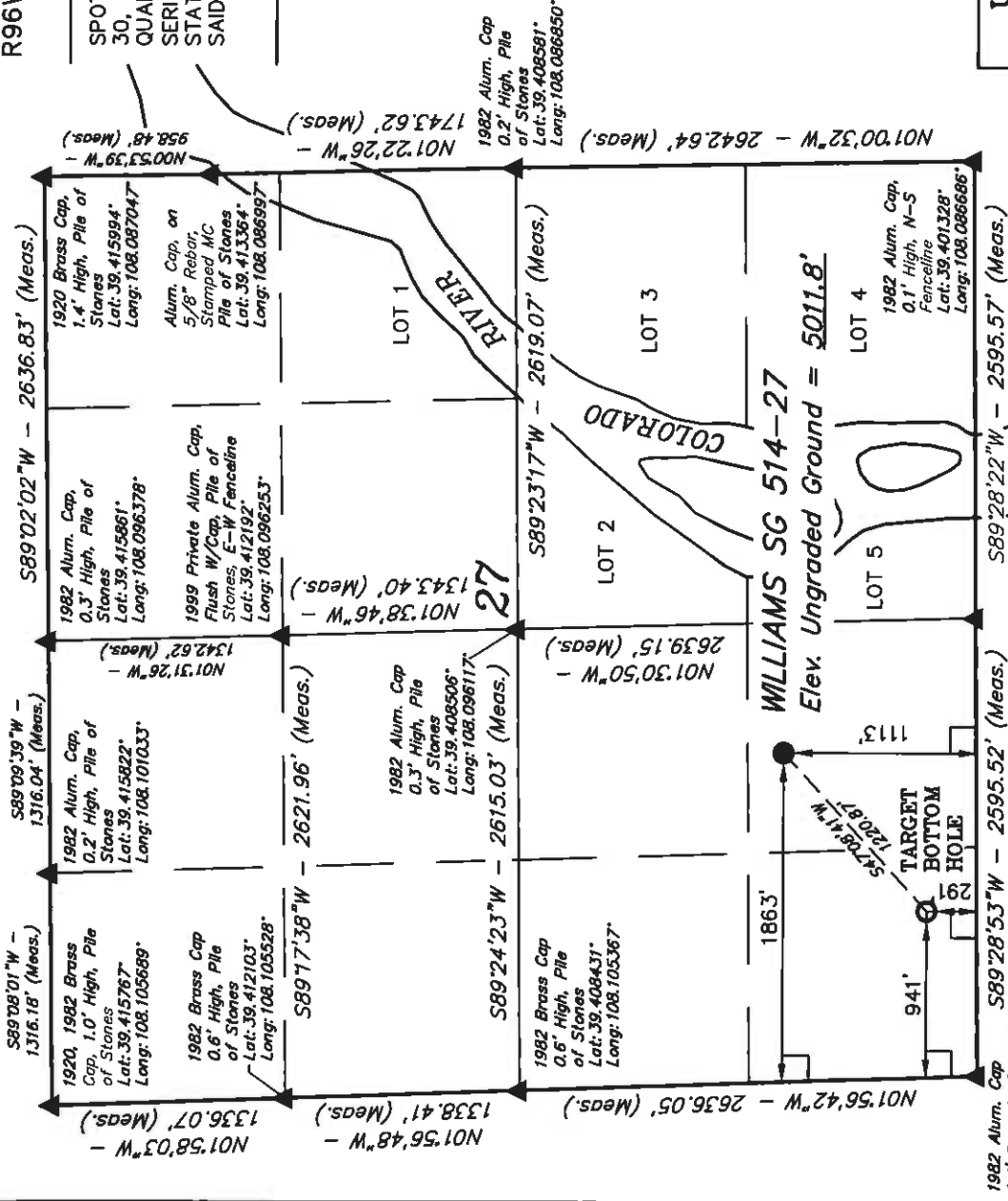
Well location, WILLIAMS SG 514-27, located as shown in the SE 1/4 SW 1/4 of Section 27, T7S, R96W, 6th P.M., Garfield County, Colorado.

BASIS OF ELEVATION

SPOT ELEVATION AT THE NORTHWEST CORNER OF SECTION 30, T5S, R95W, 6th P.M. TAKEN FROM THE FORKED GULCH QUADRANGLE, COLORADO, GARFIELD COUNTY, 7.5 MINUTE SERIES (TOPOGRAPHICAL MAP) PUBLISHED BY THE UNITED STATES DEPARTMENT OF THE INTERIOR, GEOLOGICAL SURVEY. SAID ELEVATION IS MARKED AS BEING 5966 FEET.

BASIS OF BEARINGS

BASIS OF BEARINGS IS A G.P.S. OBSERVATION.



CERTIFICATE

THIS IS TO CERTIFY THAT THE ABOVE PLANT WAS PREPARED AND LOCATION AS SHOWN WAS STAKED ON THE GROUND FROM FIELD NOTES OF ACTUAL SURVEYS MADE BY ME OR UNDER MY SUPERVISION AND THAT THE SAME ARE TRUE AND CORRECT TO THE BEST OF MY KNOWLEDGE AND BELIEF.

REGISTERED LAND SURVEYOR
REGISTRATION NO. 17498
STATE OF COLORADO

UTAH ENGINEERING & LAND SURVEYING

85 SOUTH 200 EAST - VERNAL, UTAH 84078

(435) 789-1017

SCALE	DATE SURVEYED:	DATE DRAWN:
1" = 1000'	05-03-10	06-02-11

REFERENCES

D.R.B. G.L.O. PLAT

FILE

COOL

WILLIAMS PRODUCTION RMT COMPANY

$$\angle = 90^\circ \text{ SYMBOL}$$

● = PROPOSED WELL HEAD.

▲ = SECTION CORNERS LOCATED.

1.000

NAU 83 (SURFACE LOCATION)	
LATITUDE = 39°24'15.48" (3)	

LATITUDE = 39°24'13.48"
LONGITUDE = 108°05'54.92"

STATE PLANE--(COLO. CENTRA
N - 158875 250

N = 1582647.670
E = 2285821.962

TOP HOLE

10M HOLE)
07.28" (39.402022)

07.28 (39.402022)
06.32 (108.101756)

CENTRAL-NAD 83)

NAD 83 (TARGET B)

LATITUDE = 39°2'

LATITUDE = 39.2
LONGITUDE = 108.7

STATE PLANE--(COL
N - 15B1817 630

N = 1581845.600
E = 2264903.800

NOTE:
SEE APPENDUM TO LEGAL FOR EXISTING
IMPROVEMENT WITHIN 400' OF THE
PROPOSED WELL DISTURBANCE.

Lat: 39.401264
Long: 108.095869

LEGEND.