

T7S, R96W, 6th P.M.

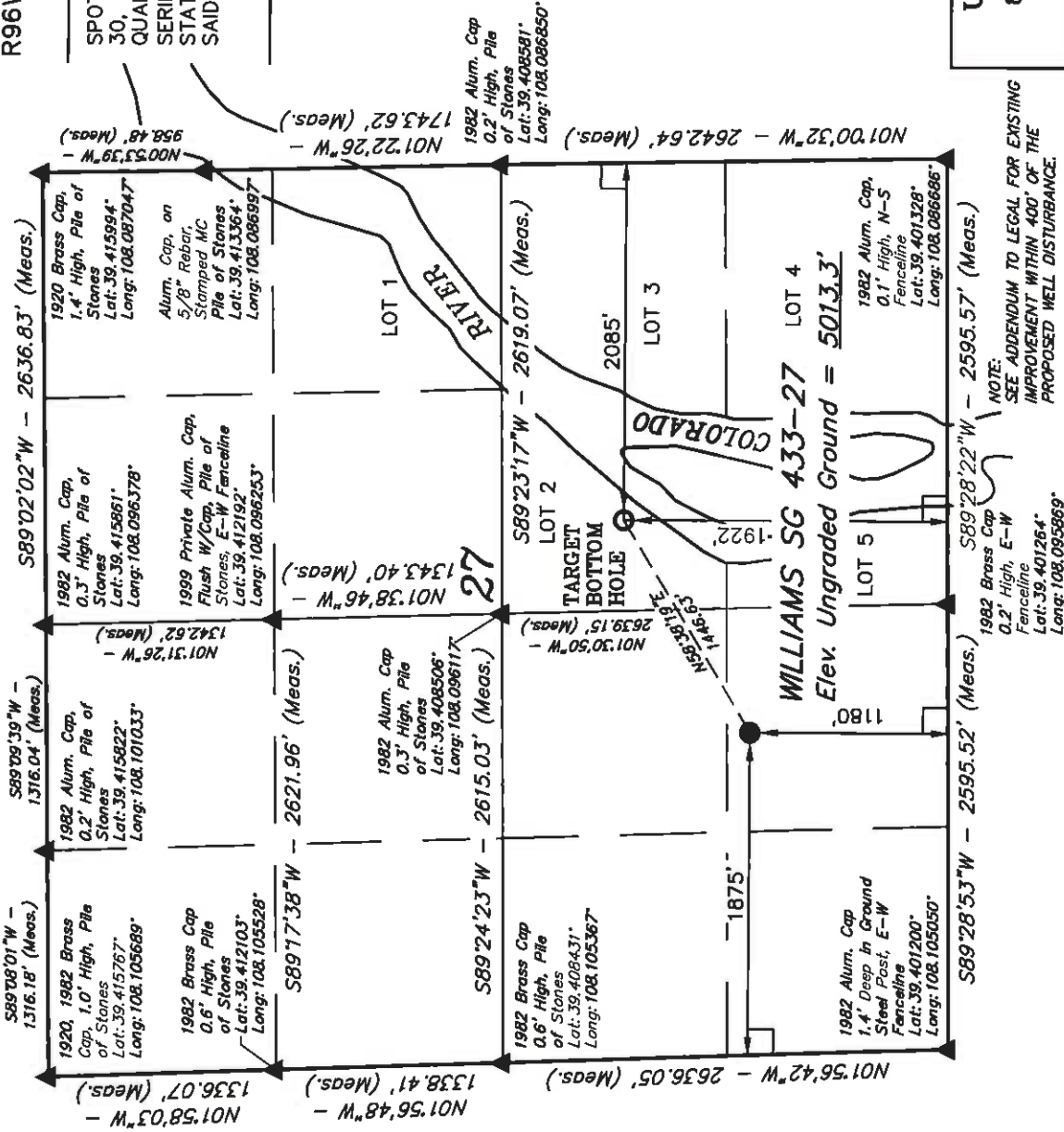
Well location, WILLIAMS SG 433-27, located as shown in the SE 1/4 SW 1/4 of Section 27, T7S, R96W, 6th P.M., Garfield County, Colorado.

BASIS OF ELEVATION

SPOT ELEVATION AT THE NORTHWEST CORNER OF SECTION 30, T5S, R95W, 6th P.M. TAKEN FROM THE FORKED GULCH QUADRANGLE, COLORADO, GARFIELD COUNTY, 7.5 MINUTE SERIES (TOPOGRAPHICAL MAP) PUBLISHED BY THE UNITED STATES DEPARTMENT OF THE INTERIOR, GEOLOGICAL SURVEY. SAID ELEVATION IS MARKED AS BEING 5966 FEET

BASIS OF BEARINGS

BASIS OF BEARINGS IS A G.P.S. OBSERVATION.



CERTIFICATE

THIS IS TO CERTIFY THAT THE ABOVE PLANT WAS PREPARED AND
LOCATION AS SHOWN WAS STAKED ON THE GROUND FROM FIELD
NOTES OF ACTUAL SURVEYS MADE BY ME ON JANUARY 24, 1911
SUPERVISION AND THAT THE SAME ARE TRUE AND CORRECT TO
THE BEST OF MY KNOWLEDGE AND BELIEF.

REGISTERED LAND SURVEYOR
REGISTRATION NO. 17492
STATE OF COLORADO

UTAH ENGINEERING & LAND SURVEYING

85 SOUTH 200 EAST - VERNAL, UTAH 84078

(435) 788-1017

<p>LEGEND:</p> <p>— = 90° SYMBOL</p> <p>● = PROPOSED WELL HEAD.</p> <p>▲ = SECTION CORNERS LOCATED.</p>	<p>SCALE 1" = 1000'</p>		<p>DATE SURVEYED: 05-03-10</p>	<p>DATE DRAWN: 06-02-11</p>
	<p>PDOP = 1.8</p>		<p>REFERENCES</p>	
	<p>NAD 83 (SURFACE LOCATION)</p> <p>LONGITUDE = 108°05'54.79" (108.098553)</p> <p>STATE PLANE (COLO. CENTRAL - NAD 83)</p> <p>N = 1582714.753</p> <p>E = 2267089.900</p>		<p>FILE</p>	<p>WILLIAMS PRODUCTION RMT COMPANY</p>
	<p>NAD 83 (TARGET BOTTOM HOLE)</p> <p>LONGITUDE = 108°05'54.79" (108.098553)</p> <p>STATE PLANE (COLO. CENTRAL - NAD 83)</p> <p>N = 1582714.753</p> <p>E = 2267089.900</p>		<p>WEATHER</p>	<p>COOL</p>