

OPERATOR: **WIEPKING - FULLERTON ENERGY LLC**
WELL NAME: **BUBBA STATE 1**

TEST NO: **1**
TICKET NO: **2859**

Contractor: Murfin Drilling
Rig No.: 25
Spot: NW/NW
Sec: 20
Twp: 10 S
Rng: 55 W
Field: Great Plains
County: Lincoln
State: Colorado
Elevation: 5199' KB - 5189' GL
Formation: Marmaton Torch

Surface Choke: 1"
Bottom Choke: 5/8"
Hole Size: 7 7/8"
Core Hole Size:
DP Size & Wt: 4 1/2" 16.60
Wt Pipe:
ID of DC: 2 1/4"
Length of DC: 542'
Total Depth: 6970'
Type of Test: Open Hole Dst
Interval: 6928' - 6970'

Mud Type: Chemical
Weight: 9.0
Viscosity: 72
Water Loss: 7.2
Filter Cake:
RW: 3.4 @ 74 Deg F
Chlorides: 1,516 Ppm

Co. Rep.: Gregg Smith
Tester: Mark Green

Pipe Recovery:
None

Properties:

Surface blow:

Pre-Flow: Began with a surface blow, increased to 1/2" at 1 minute, decreased to a surface blow at 15 minutes, died at 20 minutes and remained.
Final Flow: Began with no blow and remained dead.

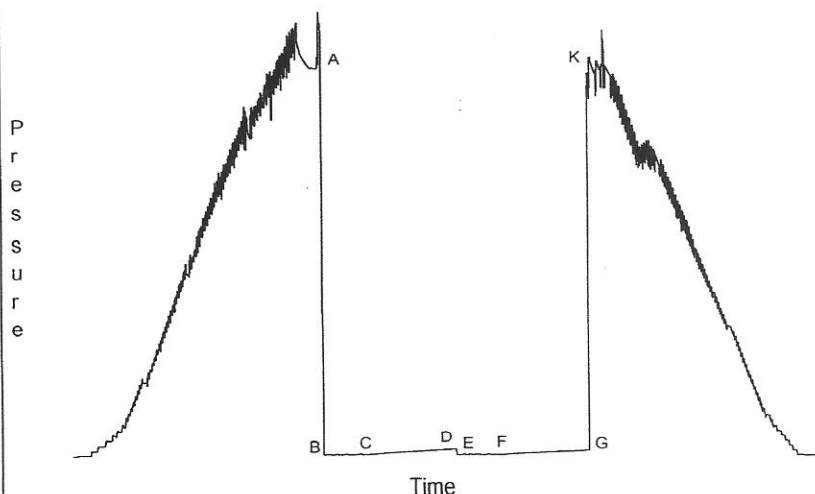
Downhole Sampler:

Pressure in Sampler: 0 psig
Volume of Sampler: 2050 cc
Volume of Sample: 1240 cc
Oil: 0 cc
Water: 0 cc
Mud: 1250 cc
Gas: 0 cu ft
Other: 0
Rw:
Chlorides:
Gas/Oil Ratio
Gravity: API @ 60 Deg F

Opened Tool @ 16:27 hrs on 05/14/2011

	Reported	Corrected	
Flow 1	30	30	min
Shut-in 1	60	59	min
Flow 2	30	30	min
Shut-in 2	60	59	min

Downhole Pressure Chart



Downhole Pressure Data

Recorder Type: JMCO Memory Recorder
No.: 30024 Cap: 10000 psi
Depth: 6907 ft.
Inside: x Outside:
Psi(a) Deg (f)
Initial Hydrostatic [A]: 3244
Final Hydrostatic [K]: 3192
Initial Flow 1 [B]: 29 156
Final Flow 1 [C]: 32 159
Initial Flow 2 [E]: 30 162
Final Flow 2 [F]: 33 164
Shut-in 1 [D]: 83 162
Shut-in 2 [G]: 67 166
Maximum Temperature: 166

OPERATOR: WIEPKING - FULLERTON ENERGY LLC
WELL NAME: BUBBA STATE 1

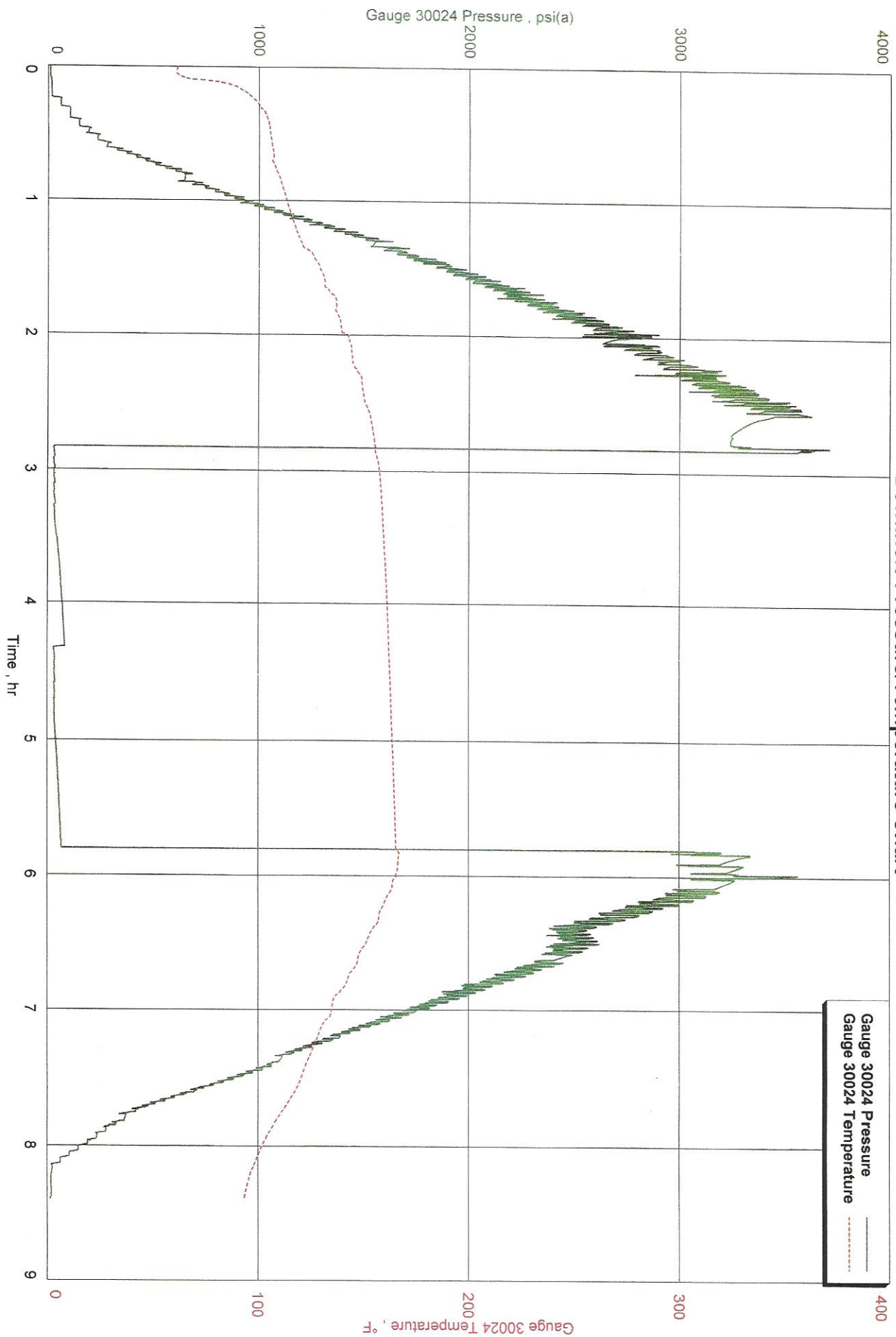
FORMATION: MARMATON TORCH
INTERVAL: 6928' - 6970'

TEST NO: 1
DATE: 05/14/2011



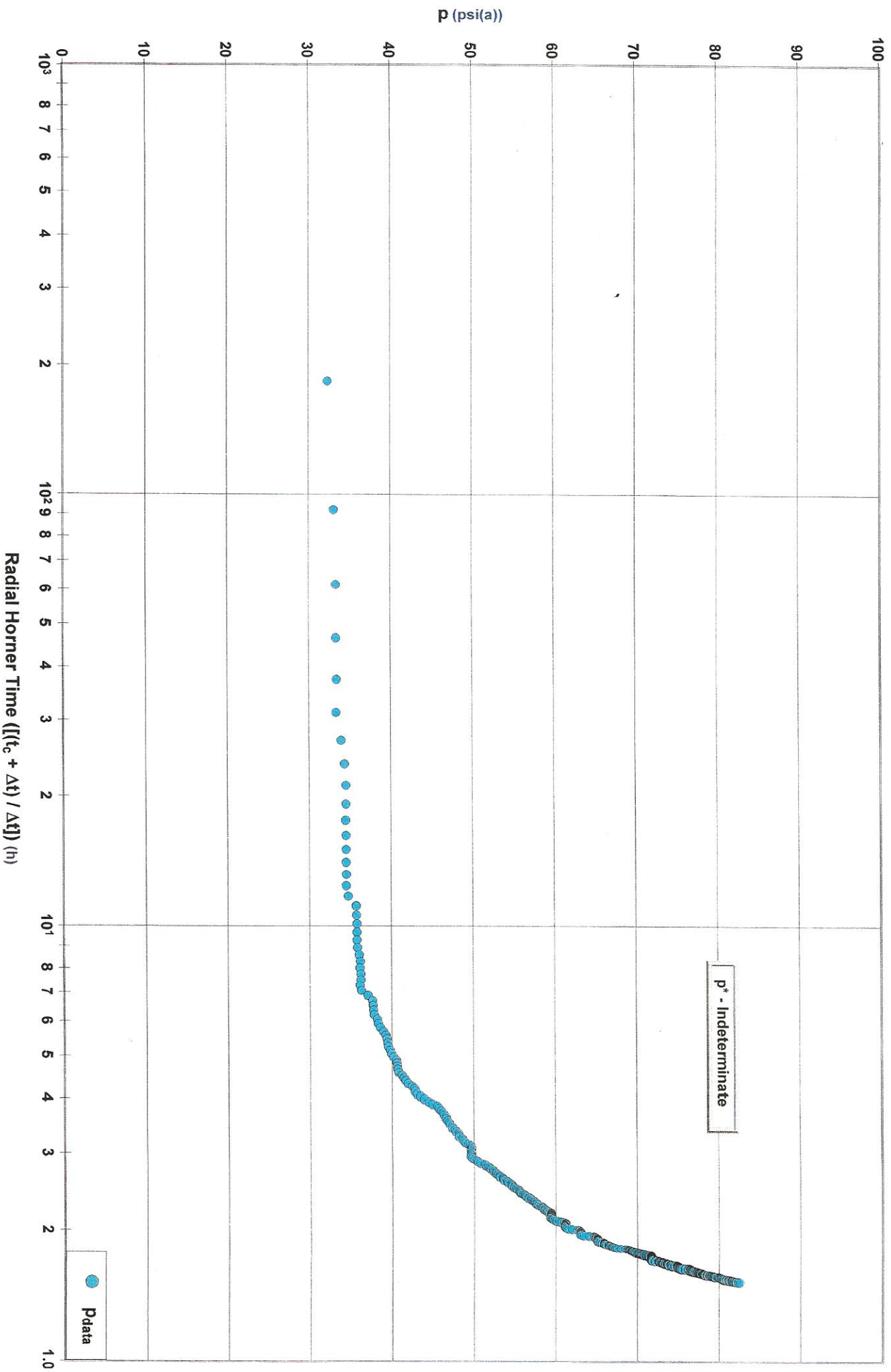
Downhole Pressure/Temperature Chart

Bubba State 1, Dst 1
Formation: Marmaton Torch



Diagnostic Plot - Shut In 1

Radial



Diagnostic Plot - Shut In 2

Radial

