

OPERATOR: **WIEPKING - FULLERTON ENERGY LLC**
WELL NAME: **BUBBA STATE 1**

TEST NO: **2**
TICKET NO: **2860**

OPERATOR: **WIEPKING - FULLERTON ENERGY LLC**
WELL NAME: **BUBBA STATE 1**

FORMATION: **CHEROKEE "A"**
INTERVAL: **7060' - 7094'**

TEST NO: **2**
DATE: **05/15/2011**

Contractor	Murfin Drilling	Surface Choke	1"	Mud Type	Chemical
Rig No.	25	Bottom Choke	5/8"	Weight	9.0
Spot	NW/NW	Hole Size	7 7/8"	Viscosity	72
Sec	20	Core Hole Size		Water Loss	7.2
Twp	10 S	DP Size & Wt	4 1/2" 16.60	Filter Cake	1/32
Rng	55 W	Wt Pipe		RW	3.4 @ 74 Deg F
Field	Great Plains	ID of DC	2 1/4"	Chlorides	1,516 Ppm
County	Lincoln	Length of DC	542'		
State	Colorado	Total Depth	7094'		
Elevation	5199' KB - 5189' GL	Type of Test	Open Hole Dst		
Formation	Cherokee "A"	Interval	7060' - 7094'	Co. Rep.	Gregg Smith
				Tester	Mark Green

Pipe Recovery:

362' Total fluid = 1.78 bbl., consisting of:
181' Gassy mud = 0.89 bbl.
90' Gassy, oil & mud = 0.44 bbl.
91' Gassy oil = 0.45 bbl.

Surface blow:

Pre-Flow: Began with a 1/2" blow, increased to bottom of bucket at 1 minute, 30.0 oz at 8 minutes, 2.0 psi at 11 minutes, 3.0 at 17 minutes and remained thru flow period. After shut in had gas to surface at 28 minutes.
Final Flow: Began with 2.5 psi, fluctuated to 3.0 psi thru flow period.

Properties:

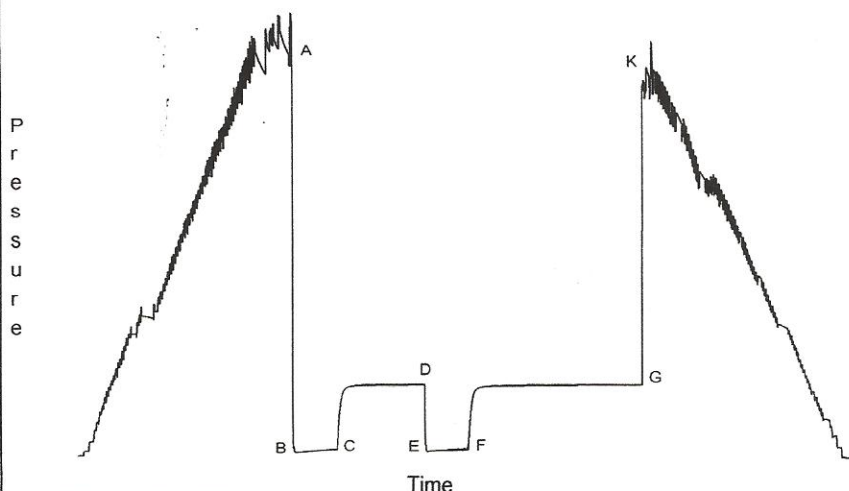
Downhole Sampler:

Pressure in Sampler	100	psig
Volume of Sampler	2050	cc
Volume of Sample	950	cc
Oil:	oil with trace of mud	950 cc
Water:	0	cc
Mud:	-	cc
Gas:	0.65	cu ft
Other:	0	
Rw:		
Chlorides:		
Gas/Oil Ratio		
Gravity	34.0	API @ 60 Deg F

Opened Tool @ 22:00 hrs on 05/15/2011

	Reported	Corrected	
Flow 1	30	30	min
Shut-in 1	60	60	min
Flow 2	30	29	min
Shut-in 2	120	119	min

Downhole Pressure Chart

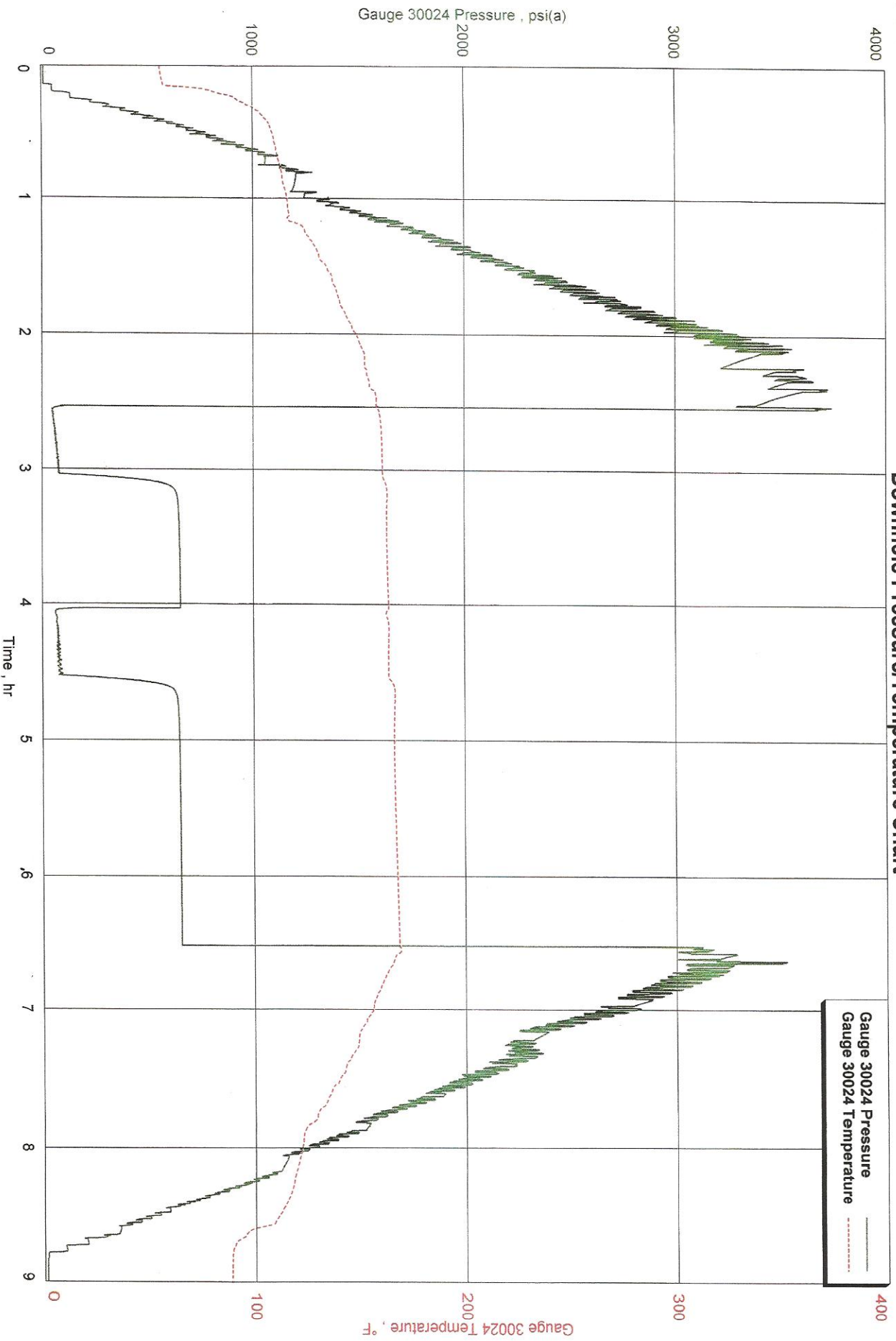


Downhole Pressure Data

Recorder Type		JMCO Memory Recorder	
No.	30024	Cap	10000
Depth	7041		
Inside	x	Outside	
		Psi(a)	Deg (f)
Initial Hydrostatic	[A]	3383	
Final Hydrostatic	[K]	3227	
Initial Flow 1	[B]	48	160
Final Flow 1	[C]	81	162
Initial Flow 2	[E]	67	163
Final Flow 2	[F]	82	164
Shut-in 1	[D]	654	164
Shut-in 2	[G]	655	169
Maximum Temperature			169

Downhole Pressure/Temperature Chart

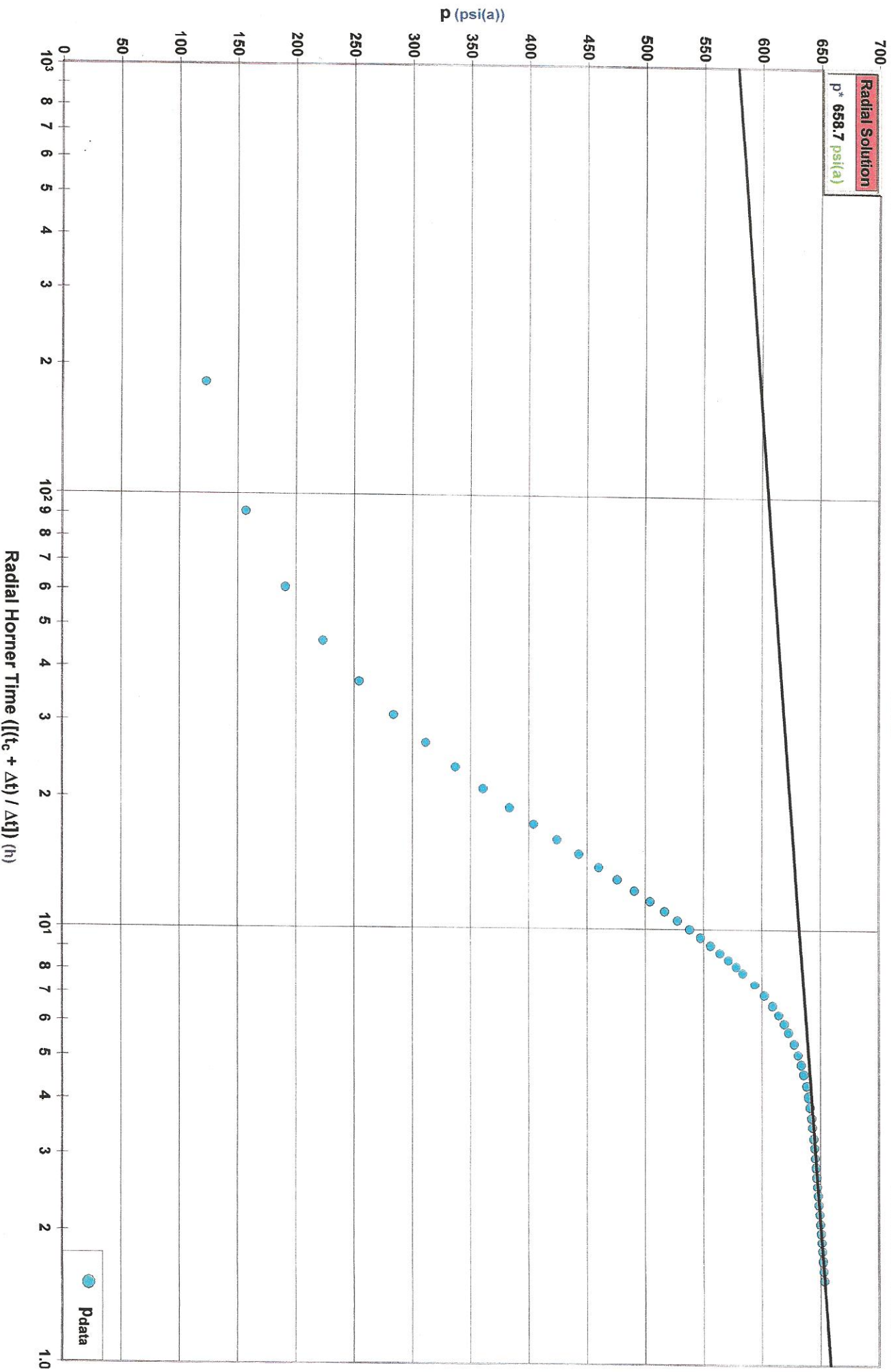
Bubba State 1, Dst 2
Formation: Cherokee "A"



Wiepking - Fullerton Energy LLC
Interval: 7060' - 7095'

Diagnostic Plot - Shut In 1

Bubba State 1, Dst 2
Formation: Cherokee "A"

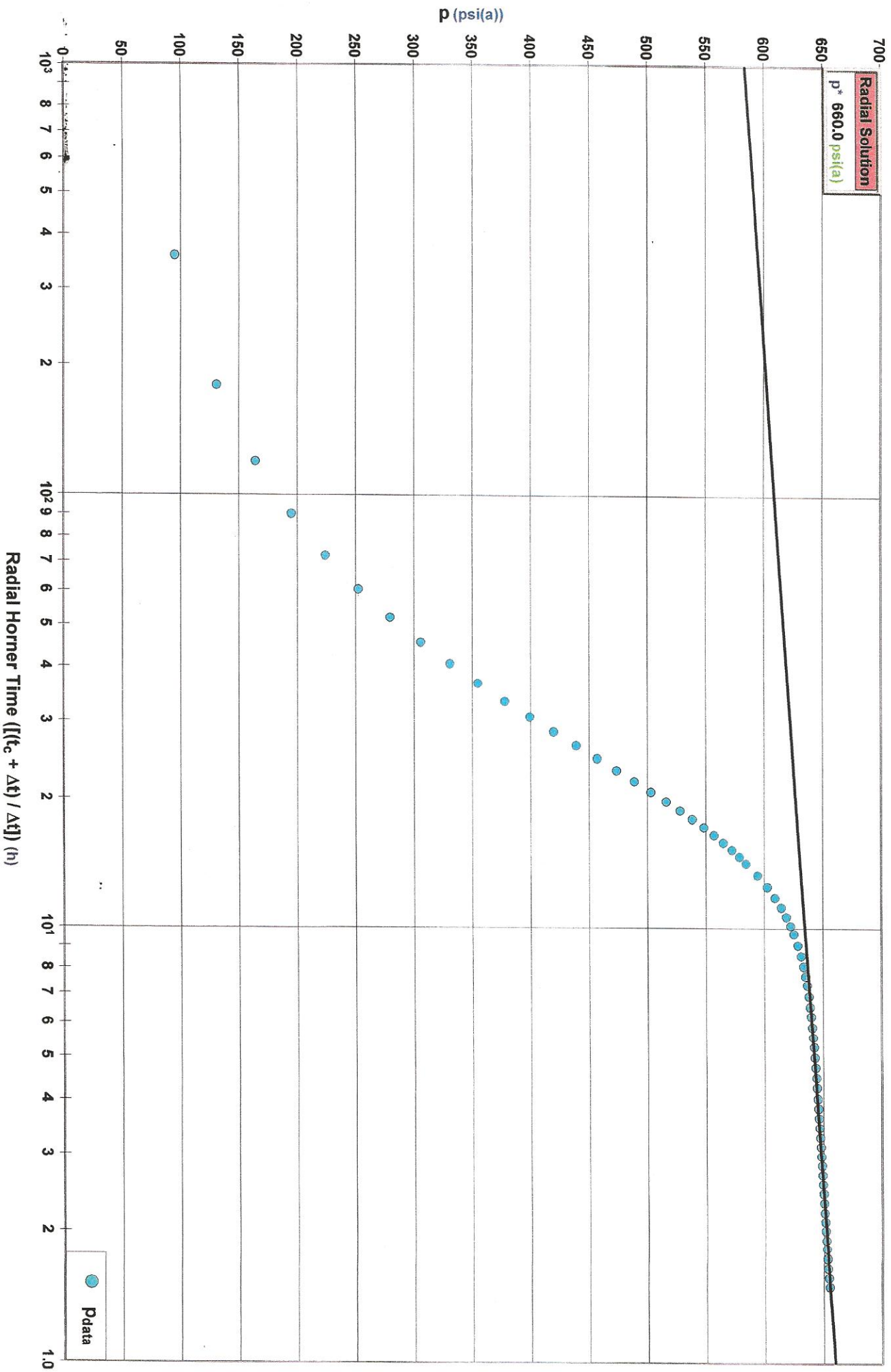


Wiepking - Fullerton Energy LLC
Interval: 7060' - 7095'

Diagnostic Plot - Shut In 2

Radial

Bubba State 1, Dst 2
Formation: Cherokee "A"



Wiepking - Fullerton Energy LLC
Interval: 7060' - 7095'

Diagnostic Plot - Shut In 2

Typecurve

Bubba State 1, Dst 2
Formation: Cherokee "A"

