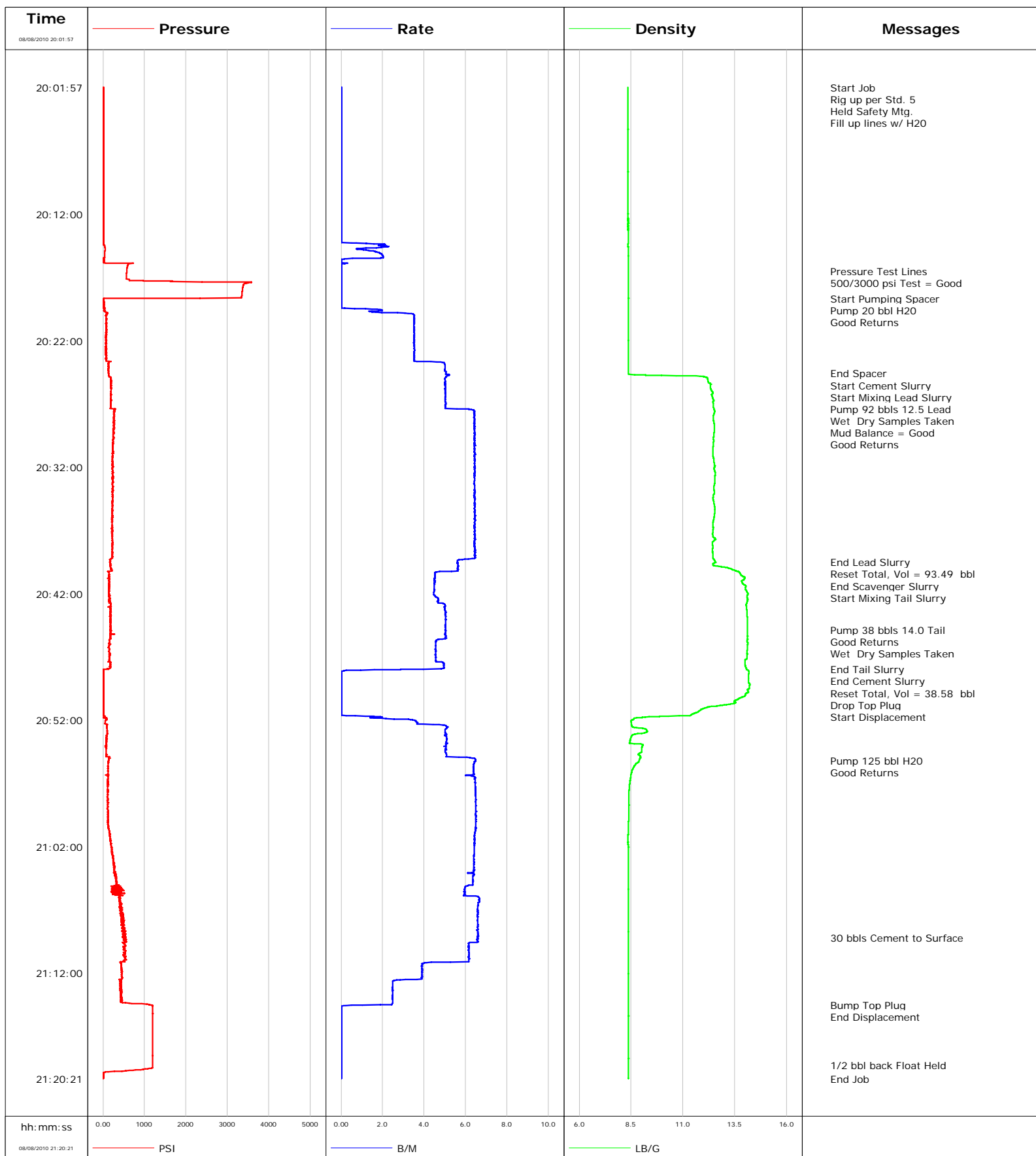


Well WF11D- K22 596
Field N. Parachute
Engineer B. Farnham
Country United States

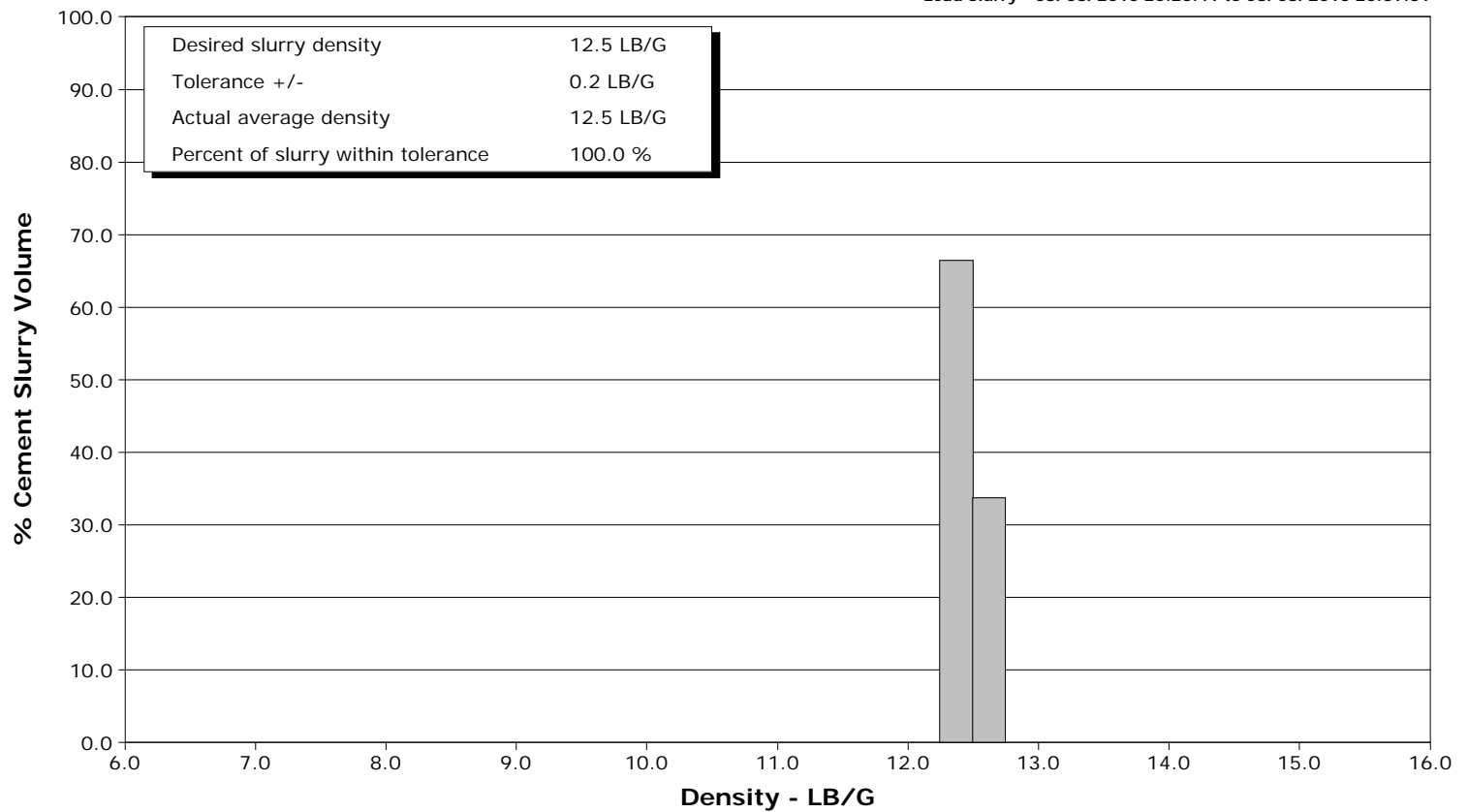
Client Encana
SIR No. 401532
Job Type 9 5/8" Surface
Job Date 8/7/2010



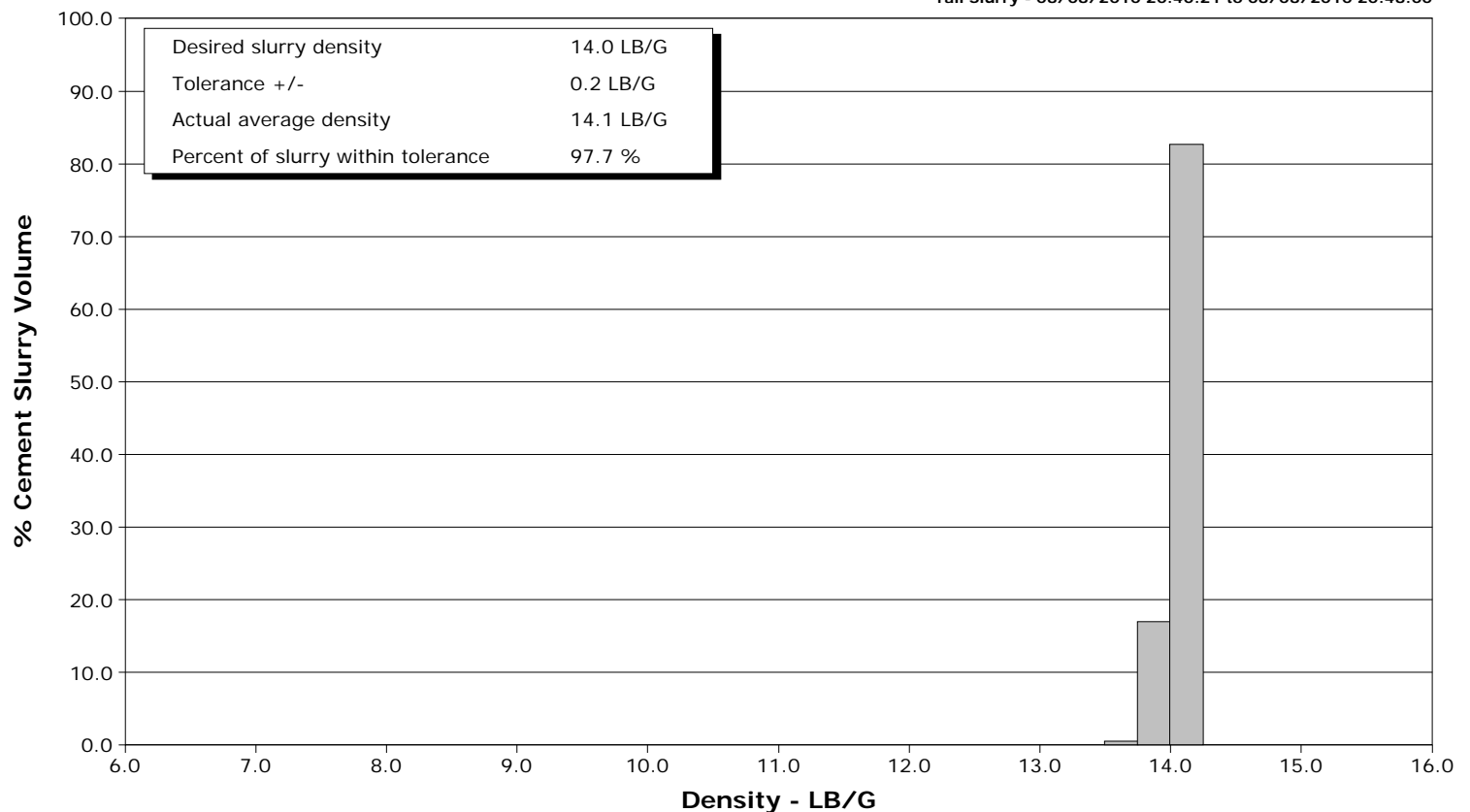
Well WF11D- K22 596
Field N. Parachute
Engineer B. Farnham
Country United States

Client Encana
SIR No. 401532
Job Type 9 5/8" Surface
Job Date 8/7/2010

Lead Slurry - 08/08/2010 20:25:41 to 08/08/2010 20:39:31



Tail Slurry - 08/08/2010 20:40:21 to 08/08/2010 20:48:00



Cementing Service Report

					Customer		Job Number			
					Encana		401532			
Well WF11D- K22 596 WF11D- K22 596			Location (legal) Patterson 303		Schlumberger Location Grand Junction			Job Start Aug/07/2010		
Field N. Parachute		Formation Name/Type shale		Deviation 15 deg	Bit Size 12.3 in		Well MD 1664.5 ft	Well TVD 0.0 ft		
County Garfield		State/Province Colorado		BHP	BHST 110 degF	BHCT 88 degF	Pore Press. Gradient			
Well Master 0631200383		API /UWI								
Rig Name patterson 303		Drilled For Gas		Service Via Land		Casing/Liner				
Offshore Zone		Well Class New		Well Type New Well Completion		Depth, ft	Size, in	Weight, lb/ft	Grade	Thread
						120.0	16.000	84.0		
						1664.5	9.630	36.0	J55	8rd
Drilling Fluid Type Bentonite		Max. Density 9.30 lb/gal		Plastic Viscosity 15.000 cP		Tubing/Drill Pipe				
						Depth,	Size,	Weight,	Grade	Thread
Service Line Cementing		Job Type 9 5/8" Surface								
Max. Allowed Tub. Press 2500 psi		Max. Allowed Ann. Press 1500 psi		WH Connection Single Cement head		Perforations/Open Hole				
						Top,	Bottom,		No. of Shots	Total Interval
										Diameter
						Treat Down Casing	Displacement 125.5 bbl	Packer Type	Packer Depth	
						Tubing Vol.	Casing Vol. 125.5 bbl	Annular Vol. 101.0 bbl	Openhole Vol. 238.0 bbl	
Casing/Tubing Secured <input checked="" type="checkbox"/>		1 Hole Vol. Circulated prior to Cement <input checked="" type="checkbox"/>				Casing Tools		Squeeze Job		
Lift Pressure 824 psi						Shoe Type Guide		Squeeze Type		
Pipe Rotated <input type="checkbox"/>		Pipe Reciprocated <input type="checkbox"/>				Shoe Depth 1665.0 ft		Tool Type		
No. Centralizers 22		Top Plugs 1		Bottom Plugs 0		Stage Tool Type		Tool Depth		
Cement Head Type Single						Stage Tool Depth		Tail Pipe Size		
Job Scheduled For Aug/07/2010 14:00		Arrived on Location Aug/07/2010 14:00		Leave Location Aug/07/2010 19:00		Collar Type Float		Tail Pipe Depth		
						Collar Depth 1622.0 ft		Sqz. Total Vol.		
Date	Time 24-hr clock	Treating Pressure PSI		Flow Rate B/M		Density LB/G	Volume BBL	Message		
08/08/2010	19:30:07							Started Acquisition		
08/08/2010	20:01:57	3		0.0		8.36	0.0			
08/08/2010	20:01:59							Start Job		
08/08/2010	20:01:59	3		0.0		8.36	0.0			
08/08/2010	20:02:05							Rig up per Std. 5		
08/08/2010	20:02:05	3		0.0		8.36	0.0			
08/08/2010	20:02:07	4		0.0		8.35	0.0			
08/08/2010	20:02:14							Held Safety Mtg.		
08/08/2010	20:02:14	3		0.0		8.35	0.0			
08/08/2010	20:02:15							Fill up lines w/ H2O		
08/08/2010	20:02:15	3		0.0		8.35	0.0			
08/08/2010	20:02:37	3		0.0		8.36	0.0			
08/08/2010	20:03:07	3		0.0		8.35	0.0			
08/08/2010	20:03:37	4		0.0		8.36	0.0			
08/08/2010	20:04:07	4		0.0		8.36	0.0			
08/08/2010	20:04:37	4		0.0		8.35	0.0			
08/08/2010	20:05:07	3		0.0		8.35	0.0			
08/08/2010	20:05:37	4		0.0		8.36	0.0			
08/08/2010	20:06:07	3		0.0		8.36	0.0			
08/08/2010	20:06:37	4		0.0		8.36	0.0			
08/08/2010	20:07:07	4		0.0		8.36	0.0			

Well WF11D- K22 596 WF11D- K22 596			Field N. Parachute	Job Start Aug/07/2010	Customer Encana	Job Number 401532
Date	Time 24-hr clock	Treating Pressure PSI	Flow Rate B/M	Density LB/G	Volume BBL	Message
08/08/2010	20:08:07	4	0.0	8.36	0.0	
08/08/2010	20:08:37	1	0.0	8.36	0.0	
08/08/2010	20:09:07	1	0.0	8.36	0.0	
08/08/2010	20:09:37	1	0.0	8.36	0.0	
08/08/2010	20:10:07	1	0.0	8.36	0.0	
08/08/2010	20:10:37	1	0.0	8.36	0.0	
08/08/2010	20:11:07	1	0.0	8.36	0.0	
08/08/2010	20:11:37	1	0.0	8.36	0.0	
08/08/2010	20:12:07	1	0.0	8.36	0.0	
08/08/2010	20:12:37	0	0.0	8.36	0.0	
08/08/2010	20:13:07	1	0.0	8.36	0.0	
08/08/2010	20:13:37	1	0.0	8.36	0.0	
08/08/2010	20:14:07	0	0.0	8.36	0.0	
08/08/2010	20:14:37	47	1.9	8.36	0.7	
08/08/2010	20:15:07	43	1.9	8.36	1.4	
08/08/2010	20:15:37	23	0.0	8.36	2.1	
08/08/2010	20:16:07	590	0.0	8.36	2.1	
08/08/2010	20:16:31					Pressure Test Lines
08/08/2010	20:16:31	574	0.0	8.36	2.1	
08/08/2010	20:16:34					500/3000 psi Test = Good
08/08/2010	20:16:34	573	0.0	8.36	2.1	
08/08/2010	20:16:37	572	0.0	8.36	2.1	
08/08/2010	20:17:07	569	0.0	8.36	2.1	
08/08/2010	20:17:37	3382	0.0	8.36	2.1	
08/08/2010	20:18:07	3356	0.0	8.36	2.1	
08/08/2010	20:18:37	3342	0.0	8.36	2.1	
08/08/2010	20:18:39					Start Pumping Spacer
08/08/2010	20:18:39	30	0.0	8.36	2.1	
08/08/2010	20:18:44					Pump 20 bbl H2O
08/08/2010	20:18:44	4	0.0	8.36	2.1	
08/08/2010	20:18:46					Good Returns
08/08/2010	20:18:46	4	0.0	8.36	2.1	
08/08/2010	20:19:07	14	0.0	8.36	2.1	
08/08/2010	20:19:37	43	2.0	8.36	2.4	
08/08/2010	20:20:07	74	3.5	8.36	3.8	
08/08/2010	20:20:37	92	3.5	8.36	5.6	
08/08/2010	20:21:07	85	3.5	8.37	7.3	
08/08/2010	20:21:37	70	3.5	8.37	9.1	
08/08/2010	20:22:07	71	3.5	8.36	10.8	
08/08/2010	20:22:37	70	3.5	8.36	12.6	
08/08/2010	20:23:07	70	3.5	8.36	14.4	
08/08/2010	20:23:37	82	3.5	8.36	16.1	
08/08/2010	20:24:07	131	5.0	8.36	18.6	
08/08/2010	20:24:35					End Spacer
08/08/2010	20:24:35	132	5.0	8.36	20.9	
08/08/2010	20:24:37	143	5.1	8.36	21.1	
08/08/2010	20:24:38					Start Cement Slurry
08/08/2010	20:24:38	141	5.1	8.36	21.2	
08/08/2010	20:25:07	194	5.0	12.20	23.6	
08/08/2010	20:25:37	197	5.0	12.33	26.1	
08/08/2010	20:25:41					Start Mixing Lead Slurry
08/08/2010	20:25:41	195	5.0	12.33	26.4	
08/08/2010	20:25:51					Pump 92 bbls 12.5 Lead
08/08/2010	20:25:51	192	5.0	12.35	27.3	

Well WF11D- K22 596 WF11D- K22 596			Field N. Parachute		Job Start Aug/07/2010	Customer Encana	Job Number 401532
Date	Time 24-hr clock	Treating Pressure PSI	Flow Rate B/M	Density LB/G	Volume BBL	Message	
08/08/2010	20:25:52	199	5.0	12.35	27.4		
08/08/2010	20:25:53					Mud Balance = Good	
08/08/2010	20:25:53	191	5.0	12.36	27.5		
08/08/2010	20:26:07	201	5.0	12.45	28.6		
08/08/2010	20:26:26					Good Returns	
08/08/2010	20:26:26	191	5.0	12.42	30.2		
08/08/2010	20:26:37	186	5.0	12.46	31.1		
08/08/2010	20:27:07	186	5.0	12.45	33.7		
08/08/2010	20:27:37	267	6.4	12.53	36.5		
08/08/2010	20:28:07	271	6.4	12.46	39.7		
08/08/2010	20:28:37	274	6.4	12.51	42.9		
08/08/2010	20:29:07	256	6.4	12.50	46.1		
08/08/2010	20:29:37	249	6.4	12.48	49.3		
08/08/2010	20:30:07	244	6.4	12.47	52.5		
08/08/2010	20:30:37	229	6.4	12.45	55.8		
08/08/2010	20:31:07	237	6.4	12.44	59.0		
08/08/2010	20:31:37	233	6.4	12.50	62.2		
08/08/2010	20:32:07	226	6.5	12.50	65.4		
08/08/2010	20:32:37	234	6.4	12.55	68.6		
08/08/2010	20:33:07	227	6.4	12.53	71.9		
08/08/2010	20:33:37	229	6.4	12.49	75.1		
08/08/2010	20:34:07	228	6.4	12.50	78.3		
08/08/2010	20:34:37	248	6.4	12.46	81.5		
08/08/2010	20:35:07	215	6.4	12.52	84.7		
08/08/2010	20:35:37	221	6.4	12.53	88.0		
08/08/2010	20:36:07	219	6.4	12.48	91.2		
08/08/2010	20:36:37	233	6.4	12.45	94.4		
08/08/2010	20:37:07	217	6.4	12.44	97.6		
08/08/2010	20:37:37	224	6.4	12.54	100.8		
08/08/2010	20:38:07	221	6.4	12.43	104.1		
08/08/2010	20:38:37	222	6.5	12.42	107.3		
08/08/2010	20:39:07	220	6.4	12.45	110.5		
08/08/2010	20:39:31					End Lead Slurry	
08/08/2010	20:39:31	161	5.6	12.58	112.9		
08/08/2010	20:39:37	181	5.6	12.46	113.5		
08/08/2010	20:39:57					Reset Total, Vol = 93.49 bbl	
08/08/2010	20:39:57	185	5.6	13.14	115.3		
08/08/2010	20:40:07	193	5.6	13.40	116.3		
08/08/2010	20:40:20					End Scavenger Slurry	
08/08/2010	20:40:20	139	4.5	13.72	117.4		
08/08/2010	20:40:21					Start Mixing Tail Slurry	
08/08/2010	20:40:21	145	4.5	13.73	117.5		
08/08/2010	20:40:37	154	4.5	13.87	118.7		
08/08/2010	20:41:07	149	4.5	13.84	120.9		
08/08/2010	20:41:37	147	4.5	14.00	123.2		
08/08/2010	20:42:07	138	4.5	14.11	125.4		
08/08/2010	20:42:37	138	4.6	14.10	127.7		
08/08/2010	20:43:07	162	5.0	14.06	130.2		
08/08/2010	20:43:37	177	5.0	14.09	132.7		
08/08/2010	20:44:07	188	5.0	14.10	135.2		
08/08/2010	20:44:37	183	5.0	14.11	137.7		
08/08/2010	20:44:51					Pump 38 bbls 14.0 Tail	
08/08/2010	20:44:51					Good Returns	
08/08/2010	20:44:51					Wet Dry Samples Taken	

Well			Field		Job Start		Customer		Job Number	
WF11D- K22 596 WF11D- K22 596			N. Parachute		Aug/07/2010		Encana		401532	
Date	Time 24-hr clock	Treating Pressure PSI	Flow Rate B/M	Density LB/G	Volume BBL	Message				
08/08/2010	20:45:07	178	5.0	14.11	140.2					
08/08/2010	20:45:37	159	4.7	14.12	142.8					
08/08/2010	20:46:07	148	4.6	14.12	145.0					
08/08/2010	20:46:37	161	4.6	14.09	147.3					
08/08/2010	20:47:07	162	4.6	14.09	149.6					
08/08/2010	20:47:37	178	4.9	14.00	152.0					
08/08/2010	20:48:00					End Tail Slurry				
08/08/2010	20:48:00	-2	2.9	14.07	153.8					
08/08/2010	20:48:01					End Cement Slurry				
08/08/2010	20:48:01	-2	2.9	14.07	153.8					
08/08/2010	20:48:04					Reset Total, Vol = 38.58 bbl				
08/08/2010	20:48:04	5	0.5	14.15	153.9					
08/08/2010	20:48:07					Drop Top Plug				
08/08/2010	20:48:07	7	0.1	14.16	153.9					
08/08/2010	20:48:09					Start Displacement				
08/08/2010	20:48:09	8	0.0	14.17	153.9					
08/08/2010	20:48:37	8	0.0	14.16	153.9					
08/08/2010	20:49:07	9	0.0	14.19	153.9					
08/08/2010	20:49:37	5	0.0	14.12	153.9					
08/08/2010	20:50:07	5	0.0	13.97	153.9					
08/08/2010	20:50:37	1	0.0	13.53	153.9					
08/08/2010	20:51:07	0	0.0	11.94	153.9					
08/08/2010	20:51:37	10	0.0	11.38	153.9					
08/08/2010	20:52:07	53	3.6	8.49	155.1					
08/08/2010	20:52:37	94	5.1	8.87	157.3					
08/08/2010	20:53:07	99	5.1	8.67	159.8					
08/08/2010	20:53:37	88	5.1	8.45	162.3					
08/08/2010	20:54:07	90	5.1	9.03	164.8					
08/08/2010	20:54:37	82	5.1	8.92	167.4					
08/08/2010	20:55:07	138	6.5	8.90	170.1					
08/08/2010	20:55:12					Pump 125 bbl H2O				
08/08/2010	20:55:12					Good Returns				
08/08/2010	20:55:12	135	6.5	8.89	170.7					
08/08/2010	20:55:37	126	6.4	8.67	173.3					
08/08/2010	20:56:07	122	6.4	8.53	176.5					
08/08/2010	20:56:37	125	6.4	8.47	179.7					
08/08/2010	20:57:07	121	6.5	8.43	182.9					
08/08/2010	20:57:37	114	6.5	8.40	186.2					
08/08/2010	20:58:07	110	6.5	8.39	189.4					
08/08/2010	20:58:37	110	6.5	8.39	192.7					
08/08/2010	20:59:07	117	6.5	8.39	195.9					
08/08/2010	20:59:37	122	6.5	8.39	199.2					
08/08/2010	21:00:07	126	6.5	8.38	202.4					
08/08/2010	21:00:37	139	6.5	8.36	205.6					
08/08/2010	21:01:07	163	6.4	8.36	208.9					
08/08/2010	21:01:37	184	6.4	8.36	212.1					
08/08/2010	21:02:07	225	6.4	8.36	215.3					
08/08/2010	21:02:37	222	6.4	8.36	218.5					
08/08/2010	21:03:07	245	6.4	8.37	221.7					
08/08/2010	21:03:37	264	6.4	8.37	224.9					
08/08/2010	21:04:07	299	6.2	8.36	228.1					
08/08/2010	21:04:37	312	6.4	8.37	231.3					
08/08/2010	21:05:07	263	6.0	8.37	234.4					
08/08/2010	21:05:37	361	6.0	8.37	237.4					

Well			Field		Job Start	Customer	Job Number
WF11D- K22 596 WF11D- K22 596			N. Parachute		Aug/07/2010	Encana	401532
Date	Time 24-hr clock	Treating Pressure PSI	Flow Rate B/M	Density LB/G	Volume BBL	Message	
08/08/2010	21:06:37	405	6.6	8.37	243.9		
08/08/2010	21:07:07	419	6.6	8.37	247.1		
08/08/2010	21:07:37	449	6.6	8.37	250.4		
08/08/2010	21:08:07	478	6.6	8.37	253.7		
08/08/2010	21:08:37	502	6.5	8.37	257.0		
08/08/2010	21:09:07	535	6.6	8.37	260.3		
08/08/2010	21:09:15					30 bbls Cement to Surface	
08/08/2010	21:09:15	536	6.6	8.37	261.2		
08/08/2010	21:09:37	525	6.2	8.37	263.6		
08/08/2010	21:10:07	491	6.2	8.37	266.7		
08/08/2010	21:10:37	491	6.2	8.37	269.8		
08/08/2010	21:11:07	421	6.1	8.37	272.8		
08/08/2010	21:11:37	455	3.9	8.37	274.9		
08/08/2010	21:12:07	448	3.9	8.37	276.8		
08/08/2010	21:12:37	412	2.5	8.37	278.6		
08/08/2010	21:13:07	444	2.5	8.37	279.9		
08/08/2010	21:13:37	433	2.5	8.37	281.1		
08/08/2010	21:14:07	422	2.5	8.37	282.3		
08/08/2010	21:14:31					Bump Top Plug	
08/08/2010	21:14:31					End Displacement	
08/08/2010	21:14:31	1111	1.9	8.37	283.3		
08/08/2010	21:14:37	1201	0.0	8.37	283.4		
08/08/2010	21:15:07	1192	0.0	8.37	283.4		
08/08/2010	21:15:37	1193	0.0	8.37	283.4		
08/08/2010	21:16:07	1194	0.0	8.37	283.4		
08/08/2010	21:16:37	1196	0.0	8.37	283.4		
08/08/2010	21:17:07	1197	0.0	8.37	283.4		
08/08/2010	21:17:37	1198	0.0	8.37	283.4		
08/08/2010	21:18:07	1199	0.0	8.37	283.4		
08/08/2010	21:18:37	1199	0.0	8.37	283.4		
08/08/2010	21:19:07	1200	0.0	8.37	283.4		
08/08/2010	21:19:16					1/2 bbl back Float Held	
08/08/2010	21:19:16	1201	0.0	8.37	283.4		
08/08/2010	21:19:37	966	0.0	8.37	283.4		
08/08/2010	21:20:07	6	0.0	8.37	283.4		
08/08/2010	21:20:21	7	0.0	8.37	283.4		

Post Job Summary

Average Pump Rates, bbl/min					Volume of Fluid Injected, bbl						
Slurry 5.0	N2	Mud 0.0	Maximum Rate 6.5		Total Slurry 130.0	Mud 0.0	Spacer 20.0	N2			
Treating Pressure Summary, psi					Breakdown Fluid						
Maximum 3000	Final 1200	Average 350	Bump Plug to 1200	Breakdown	Type FreshWater		Volume 325.0 bbl		Density 8.34 lb/gal		
Avg. N2 Percent		Designed Slurry Volume 130.0 bbl		Displacement 125.5 bbl		Mix Water Temp 70 degF		Cement Circulated to Surface?	<input checked="" type="checkbox"/>	Volume 30.0 bbl	
								Washed Thru Perfs	<input type="checkbox"/>		To
Customer or Authorized Representative Dawn Gerrard				Schlumberger Supervisor B. Farnham				Circulation Lost	<input checked="" type="checkbox"/>	Job Completed	<input checked="" type="checkbox"/>
								-		-	