
LARAMIE ENERGY II LLC EBUSINESS

**SOUTH LEVERICH 13-10A
PICEANCE
Garfield County, Colorado**

Cement Surface Casing
07-May-2009

Post Job Report

The Road to Excellence Starts with Safety

Sold To #: 344919	Ship To #: 338668	Quote #:	Sales Order #: 6656974
Customer: LARAMIE ENERGY II LLC EBUSINESS	Customer Rep: CLAUSSEN, KELLY		
Well Name: SOUTH LEVERICH	Well #: 13-10A	API/UWI #:	
Field: Piceance	City (SAP): RIFLE	County/Parish: Garfield	State: Colorado
Contractor: GREYWOLF 706	Rig/Platform Name/Num: GREYWOLF 706		
Job Purpose: Cement Surface Casing			
Well Type: Development Well	Job Type: Cement Surface Casing		
Sales Person: DUNNING, DUSTIN	Srv Supervisor: CALDWELL, JEFFREY	MBU ID Emp #: 369111	

Job Personnel

HES Emp Name	Exp Hrs	Emp #	HES Emp Name	Exp Hrs	Emp #	HES Emp Name	Exp Hrs	Emp #
CALDWELL, JEFFREY S	6	369111	CARTER, ERIC Earl	6	345598	GALLEGOS, JASON Michael	6	386647
GAMBLE, BENJAMIN T	6	446666	LUCADO, JARED	6	433527	TRIPLETT, MICHEAL Anthony	6	447908

Equipment

HES Unit #	Distance-1 way	HES Unit #	Distance-1 way	HES Unit #	Distance-1 way	HES Unit #	Distance-1 way
10296152C	85 mile	10783473	85 mile	10897797	85 mile	10951248	85 mile
11021972	85 mile	11027039	85 mile	11071463	85 mile		

Job Hours

Date	On Location Hours	Operating Hours	Date	On Location Hours	Operating Hours	Date	On Location Hours	Operating Hours
05/07/09	6	2						
TOTAL	Total is the sum of each column separately							

Job

Formation Name	Job	Job Times
Formation Depth (MD)	Top Bottom	Called Out Date Time Time Zone
Form Type	BHST	On Location 07 - May - 2009 12:00 MST
Job depth MD	2510. ft	Job Started 07 - May - 2009 14:25 MST
Water Depth	Wk Ht Above Floor 5. ft	Job Completed 07 - May - 2009 16:23 MST
Perforation Depth (MD)	From To	Departed Loc 07 - May - 2009 18:00 MST

Well Data

Description	New / Used	Max pressure psig	Size in	ID in	Weight lbm/ft	Thread	Grade	Top MD ft	Bottom MD ft	Top TVD ft	Bottom TVD ft
-------------	------------	-------------------	---------	-------	---------------	--------	-------	-----------	--------------	------------	---------------

Sales/Rental/3rd Party (HES)

Description	Qty	Qty uom	Depth	Supplier
PLUG,CMTG,TOP,8 5/8,HWE,7.20 MIN/8.09 MA	1	EA		
PORT. DAS W/CEMWIN;ACQUIRE W/HES, ZI	1	JOB		
ADC (AUTO DENSITY CTRL) SYS, /JOB,ZI	1	JOB		

Tools and Accessories

Type	Size	Qty	Make	Depth	Type	Size	Qty	Make	Depth	Type	Size	Qty	Make
Guide Shoe					Packer					Top Plug	8.625	1	
Float Shoe					Bridge Plug					Bottom Plug			
Float Collar					Retainer					SSR plug set			
Insert Float										Plug Container	8.625	1	
Stage Tool										Centralizers			

Miscellaneous Materials

Gelling Agt	Conc	Surfactant	Conc	Acid Type	Qty	Conc	%
Treatment Fld	Conc	Inhibitor	Conc	Sand Type	Size	Qty	

Fluid Data										
Stage/Plug #: 1										
Fluid #	Stage Type	Fluid Name	Qty	Qty uom	Mixing Density lbm/gal	Yield ft ³ /sk	Mix Fluid Gal/sk	Rate bbl/min	Total Mix Fluid Gal/sk	
1	WATER SPACER		20	bbl	.	.0	.0	7.0		
2	Lead Cement	VERSACEM (TM) SYSTEM (452010)	775	sacks	12.3	2.38	13.75	7.0		
3	Tail Cement	SWIFTCES (TM) SYSTEM (452990)	325	sacks	14.2	1.43	6.88	5.0		
4	DISPLACEMENT		149.8	bbl	.	.0	.0	8.0		
Calculated Values		Pressures		Volumes						
Displacement	149.8	Shut In: Instant		Lost Returns	0	Cement Slurry	411	Pad		
Top Of Cement	SURFACE	5 Min		Cement Returns	150	Actual Displacement	149.8	Treatment		
Frac Gradient		15 Min		Spacers	20	Load and Breakdown		Total Job	580.8	
Rates										
Circulating	RIG	Mixing	7	Displacement	8	Avg. Job	7.5			
Cement Left In Pipe	Amount	44 ft	Reason	Shoe Joint						
Frac Ring # 1 @	ID	Frac ring # 2 @	ID	Frac Ring # 3 @	ID	Frac Ring # 4 @	ID			
The Information Stated Herein Is Correct				Customer Representative Signature						

The Road to Excellence Starts with Safety

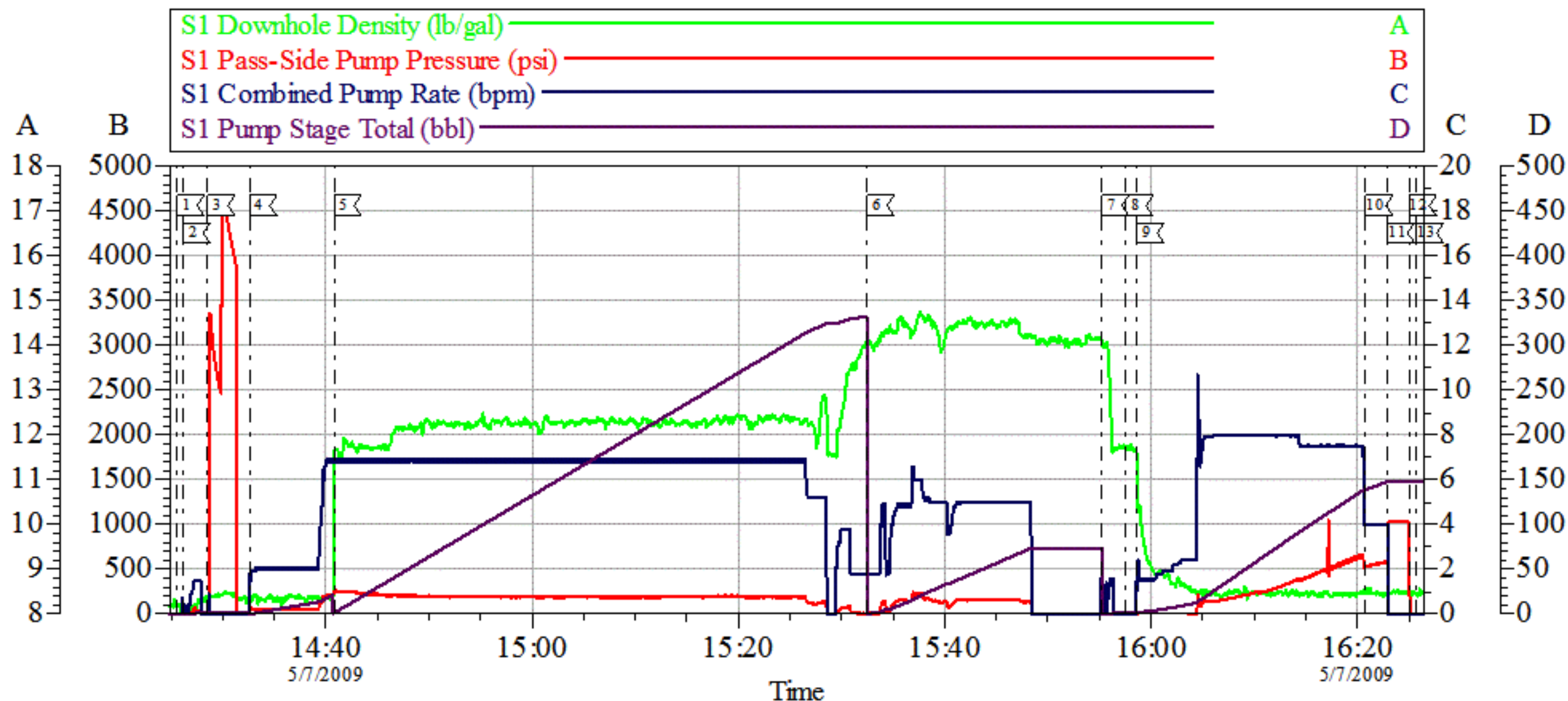
Sold To #: 344919	Ship To #: 338668	Quote #:	Sales Order #: 6656974
Customer: LARAMIE ENERGY II LLC EBUSINESS		Customer Rep: CLAUSSEN, KELLY	
Well Name: SOUTH LEVERICH		Well #: 13-10A	API/UWI #:
Field: Piceance	City (SAP): RIFLE	County/Parish: Garfield	State: Colorado
Legal Description:			
Lat: N 0 deg. OR N 0 deg. 0 min. 0 secs.		Long: E 0 deg. OR E 0 deg. 0 min. 0 secs.	
Contractor: GREYWOLF 706		Rig/Platform Name/Num: GREYWOLF 706	
Job Purpose: Cement Surface Casing			Ticket Amount:
Well Type: Development Well		Job Type: Cement Surface Casing	
Sales Person: DUNNING, DUSTIN		Srv Supervisor: CALDWELL, JEFFREY	MBU ID Emp #: 369111

Activity Description	Date/Time	Cht #	Rate bbl/min	Volume bbl		Pressure psig		Comments
				Stage	Total	Tubing	Casing	
Call Out	05/07/2009 07:00							ELITE #9.PLUG CONTAINER #D1417
Pre-Convoy Safety Meeting	05/07/2009 08:30							JARED LUCADO IS SAFETY OBSERVER ON JOB.
Crew Leave Yard	05/07/2009 09:00							
Arrive At Loc	05/07/2009 12:00							CASING WAS STILL BEING RUN
Safety Meeting	05/07/2009 12:15							
Rig-Up Equipment	05/07/2009 12:45							
Pre-Job Safety Meeting	05/07/2009 13:45							
Start Job	05/07/2009 14:25							TD:2510 TP:2503 SJ:44 MUD:10 PPG 14 3/4" HOLE
Prime Pumps	05/07/2009 14:26		1.5	1.5	1.5		73.0	H2O
Test Lines	05/07/2009 14:28					3500.0		
Pump Spacer	05/07/2009 14:32		7	20	20		208.0	H2O
Pump Lead Cement	05/07/2009 14:40		7	328.5	332.4		190.0	775 SKS 12.3 PPG 2.38 CUFT/SAK 13.75 GAL/SAK

Activity Description	Date/Time	Cht #	Rate bbl/min	Volume bbl		Pressure psig		Comments
				Stage	Total	Tubing	Casing	
Pump Tail Cement	05/07/2009 15:32		7	82.8	74		202.0	325 SKS 14.2 PPG 1.43 CUFT/SAK 6.88 GAL/SAK. WE HAD TO SLOW RATE WHEN WE SWAPPED TO TAIL SO RIG COULD HOOK UP DREDGE PUMP TO PIT.
Shutdown	05/07/2009 15:55							WP:110 BP:13
Drop Top Plug	05/07/2009 15:57							PLUG AWAY
Pump Displacement	05/07/2009 15:58		8	149.8	149.8		642.0	H2O. WE SHUT DOWN RIGHT AFTER WE KICKED PUMPS IN GEAR I DID NOT FEEL PLUG LEAVE HEAD. KNOCKED CAP OFF AND PLUG WAS GONE.
Slow Rate	05/07/2009 16:20		4	140	140		520.0	
Bump Plug	05/07/2009 16:23		4	149.8	149.8		1030.0	PLUG BUMPED
Check Floats	05/07/2009 16:25							FLOATS HELD 1/2 BBL BACK. GOOD CIRCULATION THROUGH OUT JOB.
End Job	05/07/2009 16:25							
Post-Job Safety Meeting (Pre Rig-Down)	05/07/2009 16:30							
Rig-Down Equipment	05/07/2009 16:45							
Crew Leave Location	05/07/2009 18:00							THANK YOU FOR CHOOSING HALLIBURTON JEFF CALDWELL AND CREW.

LARAMIE

8 5/8 SURFACE



Local Event Log							
Intersection		SPPP	SDD	SCPR	SPST	Intersection	
1 STARTJOB	14:25:33	-1.000	8.208	0.000	0.000	2 PRIME LINES	14:26:08
3 TESTLINES	14:28:31	16.00	8.382	0.000	1.600	4 PUMP SPACER	14:32:35
5 PUMP LEAD CEMENT	14:40:48	242.8	11.13	6.837	0.963	6 PUMP TAIL CEMENT	15:32:27
7 SHUTDOWN	15:55:13	-19.49	14.11	1.300	73.70	8 DROP TOP PLUG	15:57:33
9 PUMP DISPLACEMENT	15:58:37	-15.57	11.58	1.746	1.200	10 SLOWRATE	16:20:47
11 BUMP PLUG	16:22:55	586.6	8.476	4.000	147.8	12 CHECK FLOATS/FLOATS HELD	16:25:01
13 END JOB	16:25:44	-57.16	8.440	0.000	148.2		

Customer: LARAMIE
Well Description: S Leverich 13-10A
Company Rep: Kelly Claussen

Job Date: 07-May-2009
Job Type: 8 5/8 Surface
Cement Supervisor: Jeff Caldwell

Sales Order #: 6656974
ADC Used: Yes
Elite #: Elite 9/Eric Carter

OptiCem v6.4.2
07-May-09 17:11