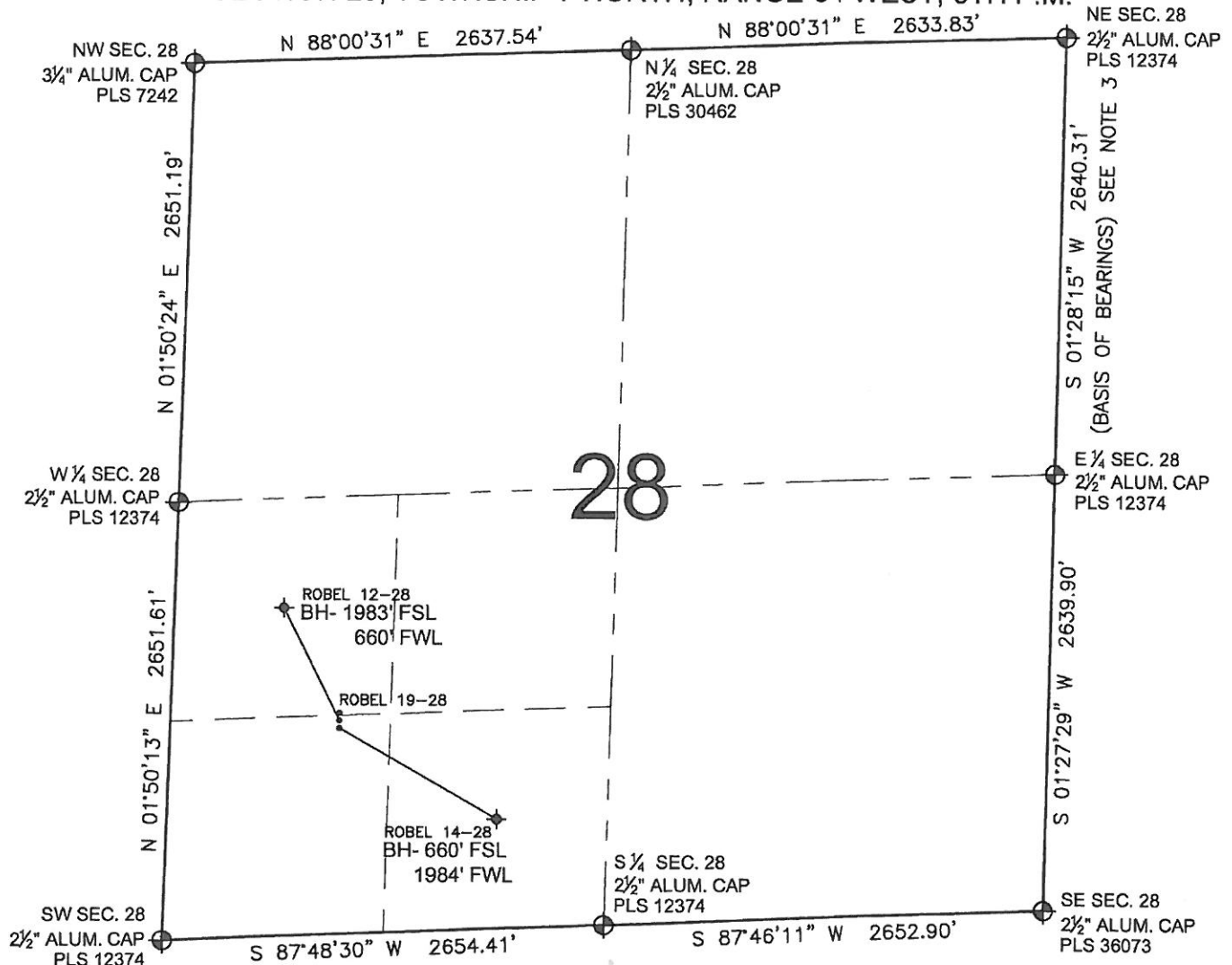


PAD DRAWING: ROBEL 3 PAD

SECTION 28, TOWNSHIP 7 NORTH, RANGE 64 WEST, 6TH P.M.



LEGEND

- = EXISTING MONUMENT
 = PROPOSED WELL
 = BOTTOM HOLE
 BH= BOTTOM HOLE
 = EXISTING WELL

NOTES:

- THIS FIELD SURVEY CONFORMS TO THE MINIMUM STANDARDS SET BY THE C.O.G.C.C., RULE NO. 215
- HORIZONTAL POSITIONS AND ORTHOMETRIC ELEVATIONS SHOWN AT THE WELL HEAD, ARE BASED ON GPS-RTK POSITIONS DERIVED FROM MINIMUM 2-HOUR STATIC OBSERVATIONS CORRECTED BY THE NATIONAL GEODETIC SURVEY ONLINE POSITIONING USER SERVICE, O.P.U.S. DATUM: HORIZONTAL = NAD83/2007, VERTICAL = NAVD88
- THE BASIS OF BEARINGS ARE STATE PLANE COORDINATE SYSTEM GRID BEARINGS SHOWN HEREON BETWEEN THE DESCRIBED THE MONUMENTS SHOWN HEREON.
- GRID DISTANCES ARE SHOWN, AS MEASURED IN THE FIELD, WITH TIES TO WELLS MEASURED PERPENDICULAR TO SECTION LINES.

NOTES:

- ROBEL 19-28 TO BE AT 1337' FSL, 1015' FWL.
 ROBEL 12-28 TO BE AT 1322' FSL, 1015' FWL.
 BOTTOM HOLE AT 1983' FSL & 660' FWL.
 ROBEL 14-28 TO BE AT 1307' FSL, 1015' FEL.
 BOTTOM HOLE AT 660' FSL & 1984' FWL.

PREPARED BY:



BAYSWATER EXPLORATION & PRODUCTION, LLC

FIELD DATE: 05-18-11	PAD NAME: ROBEL 3 PAD
DRAWING DATE: 06-14-11	SURFACE LOCATION: WELD COUNTY, COLORADO NW 1/4 SW 1/4, SEC. 28, T7N, R64W SW 1/4 SW 1/4, SEC. 28, T7N, R64W
BY: SMF	

