

Cement Bond Log

Company		Pioneer Natural Resources	
Well		Grants 14-34 Tr	
Field		Purgatorie River	
County		Las Animas	
State		Colorado	
Location:		API #: 05 071 09783 00	
SEC 34 TWP 32S RGE 66W		571' FSL & 636' FWL	
Permanent Datum	GL	Elevation	7485'
Log Measured From	KB 4' A.G.L		
Drilling Measured From	KB	Elevation	K.B. 7489' D.F. 7485' G.L. 7485'
Date	5-25-11		
Run Number	one		
Depth Driller	1902'		
Depth Logger	1861'		
Bottom Logged Interval	1859'		
Top Log Interval	Surface		
Open Hole Size	7 7/8		
Type Fluid	water		
Density / Viscosity	///		
Max. Recorded Temp.	80 DEG F @ 671'		
Estimated Cement Top	88'		
Time Well Ready	ROA		
Time Logger on Bottom	11:30 A.M.		
Equipment Number	T590		
Location	Trinidad		
Recorded By	C. Sineros		
Witnessed By	Mr. D. Martinez		
Borehole Record		Tubing Record	
Run Number	Bit	From	To
Casing Record	Size	Wgt/Ft	Top
Surface String	8 5/8"		Bottom
Prot. String			671'
Production String	5 1/5"		
Liner			TD

<<< Fold Here >>>

All interpretations are opinions based on inferences from electrical or other measurements and we cannot and do not guarantee the accuracy or correctness of any interpretation, and we shall not, except in the case of gross or willful negligence on our part, be liable or responsible for any loss, costs, damages, or expenses incurred or sustained by anyone resulting from any interpretation made by any of our officers, agents or employees. These interpretations are also subject to our general terms and conditions set out in our current Price Schedule.

Comments

Log Ran under 1000 PSI.

Directions:

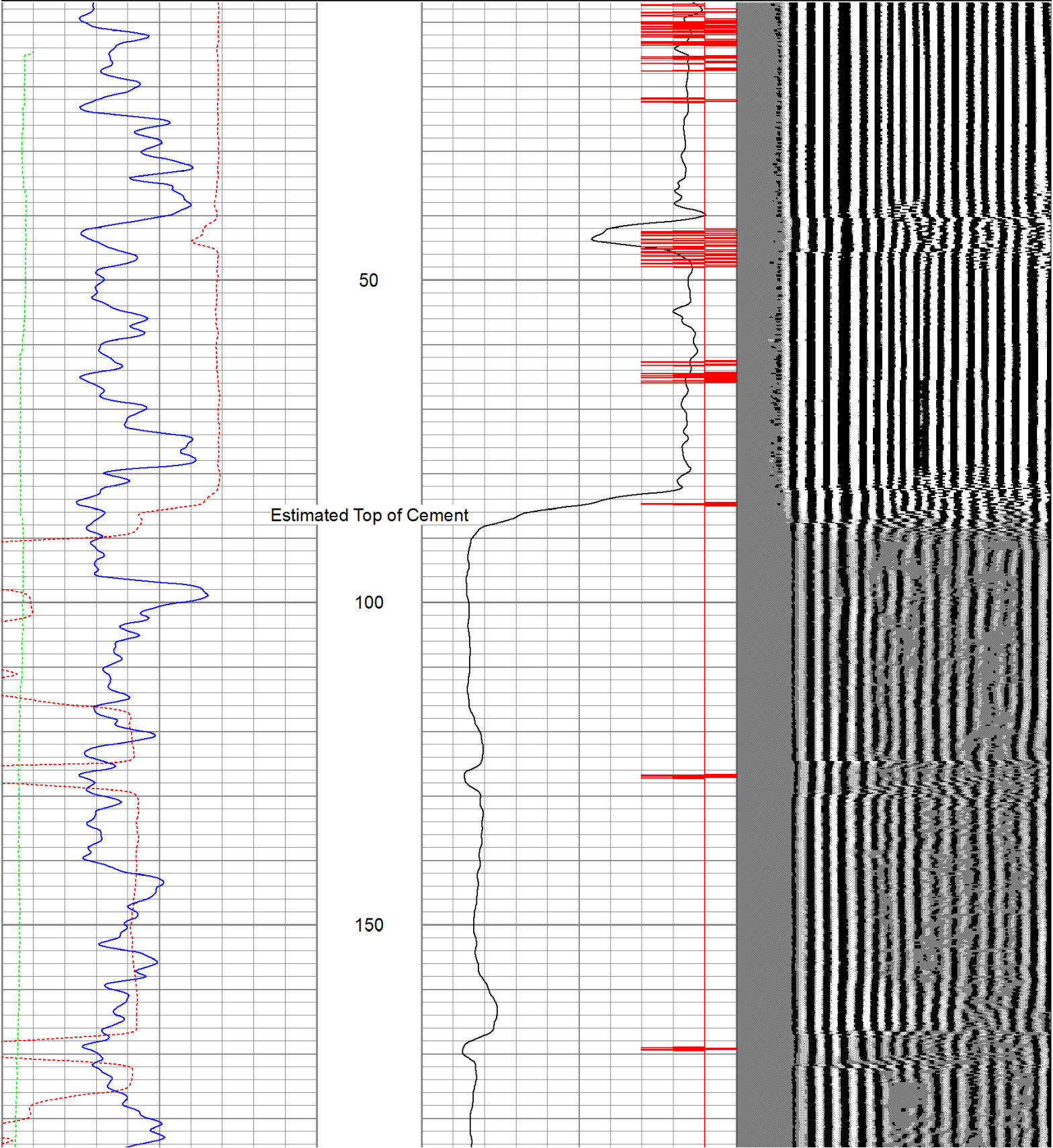
Reilly Canyon, stay left at Post Office, left on C.R. 30.1 towards Cottontail Compressor, take 2nd left, straight across from road to Cottontail, and first right to location.

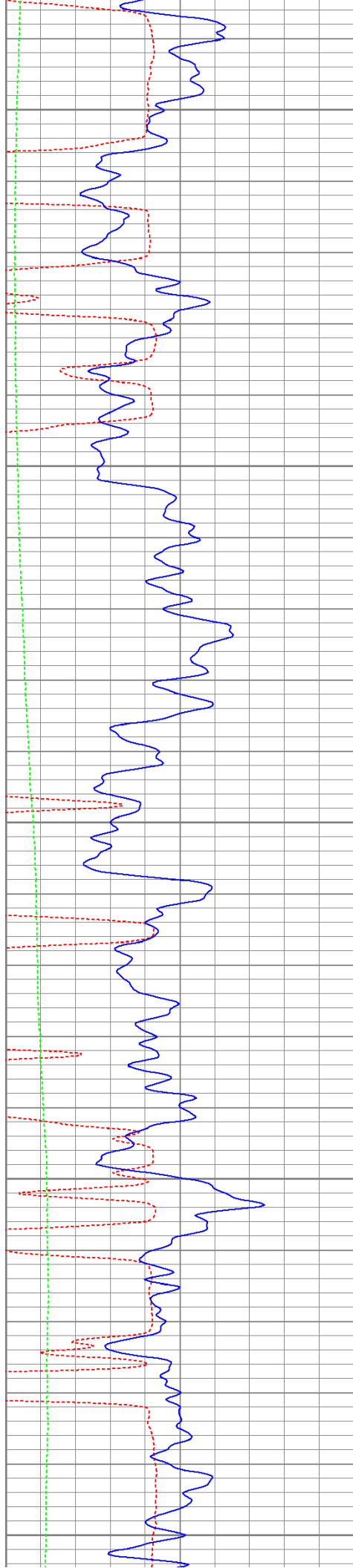
Database File: grantstr52511b.db
Dataset Pathname: pass2.1
Presentation Format: cbldig
Dataset Creation: Wed May 25 12:33:46 2011 by Calc Open-Cased 110302
Charted by: Depth in Feet scaled 1:240

400	Travel Time (usec)	200
0	GR (GAPI)	200
0	DEVI (°)	10

0	Amplitude (mV)	100
9	Collar Locator	-1

200 Variable Density 1200





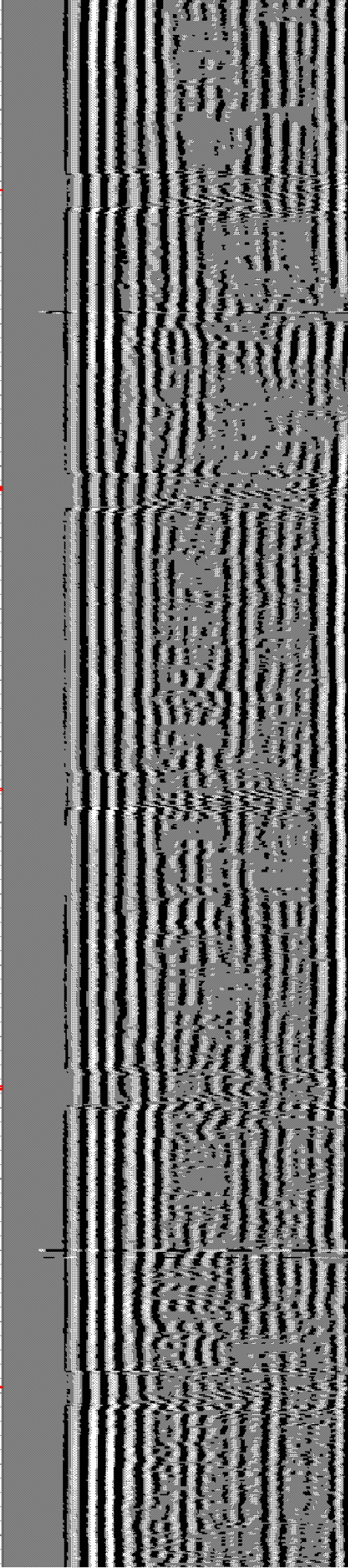
200

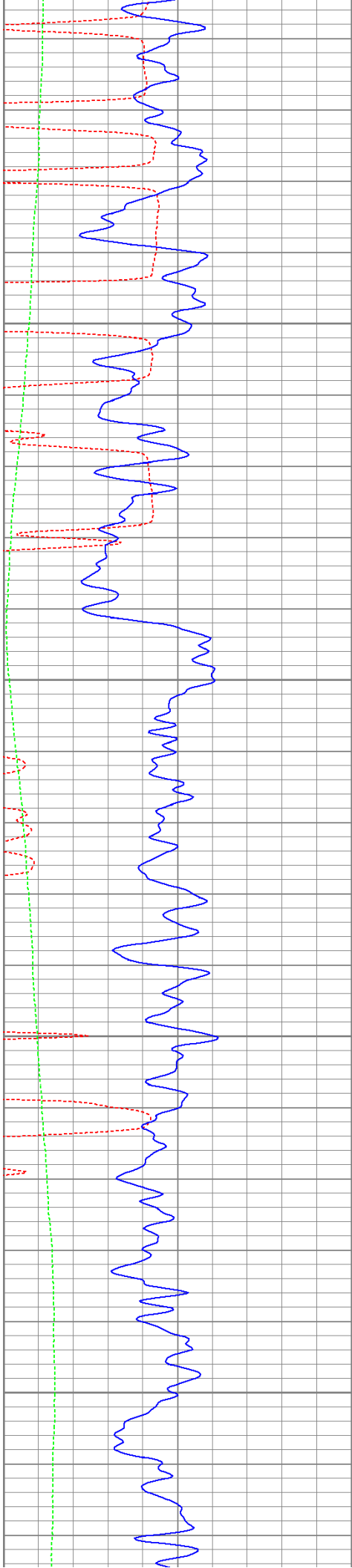
250

300

350

400



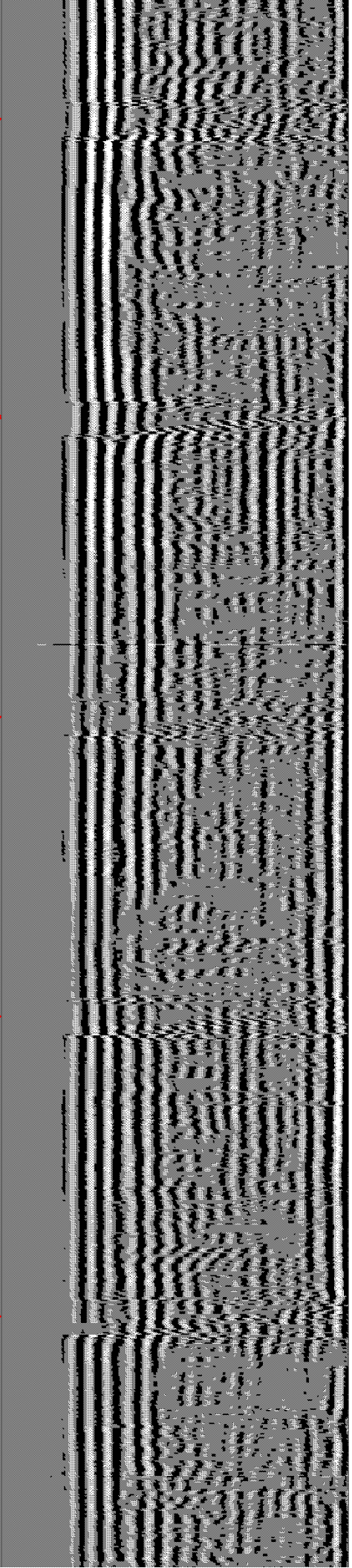
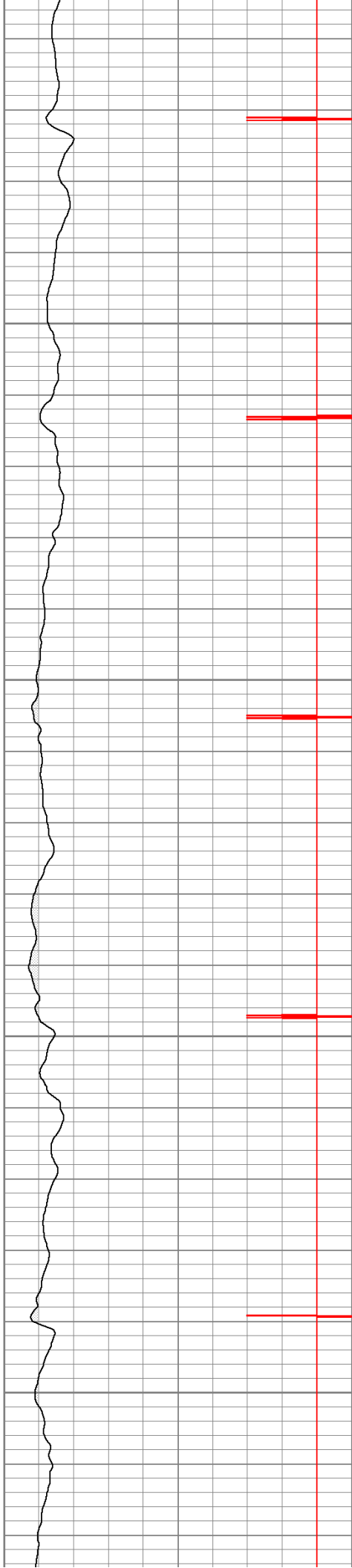


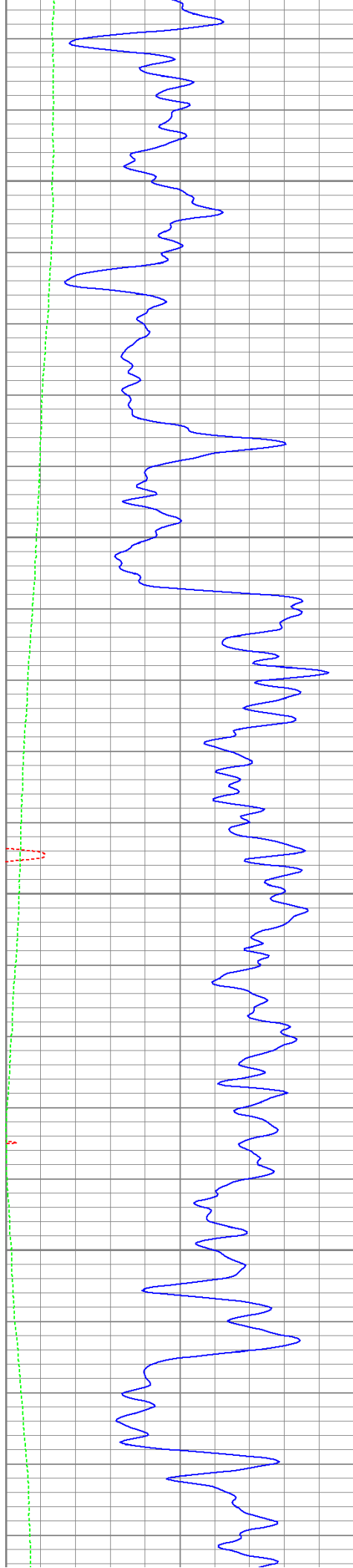
450

500

550

600



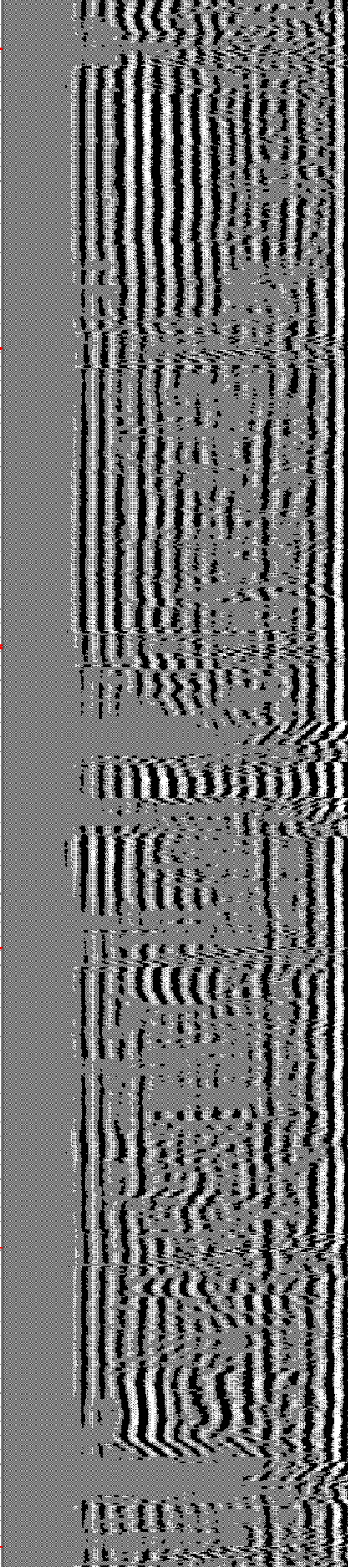
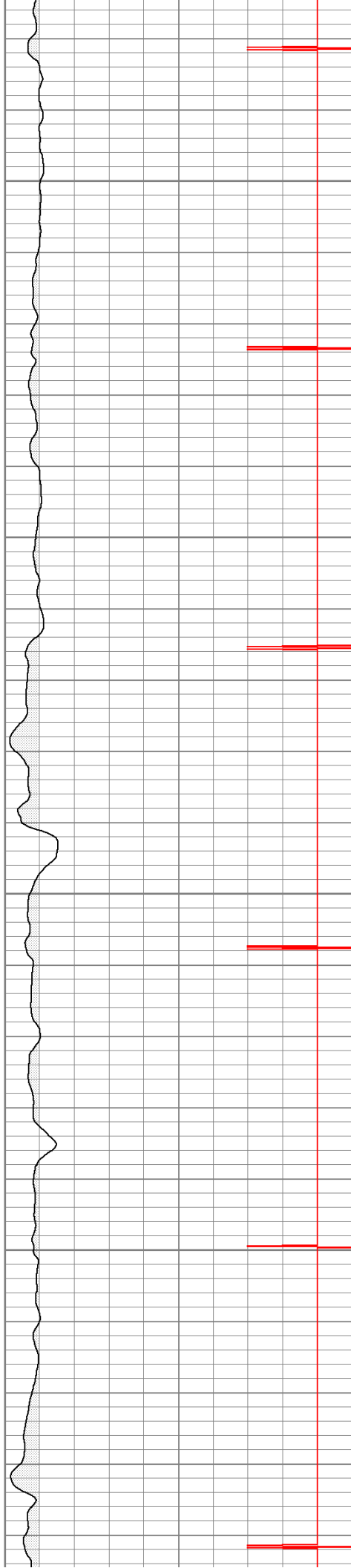


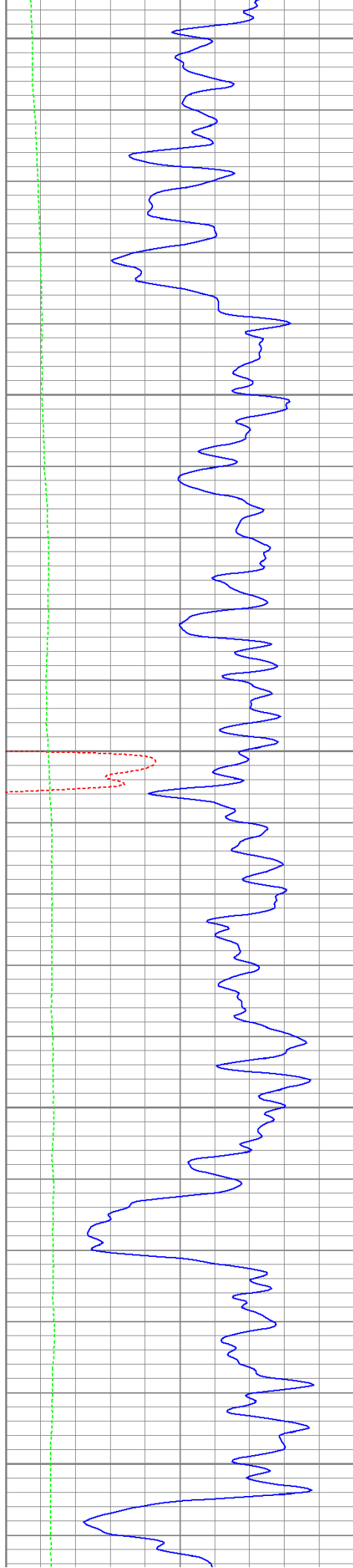
650

700

750

800





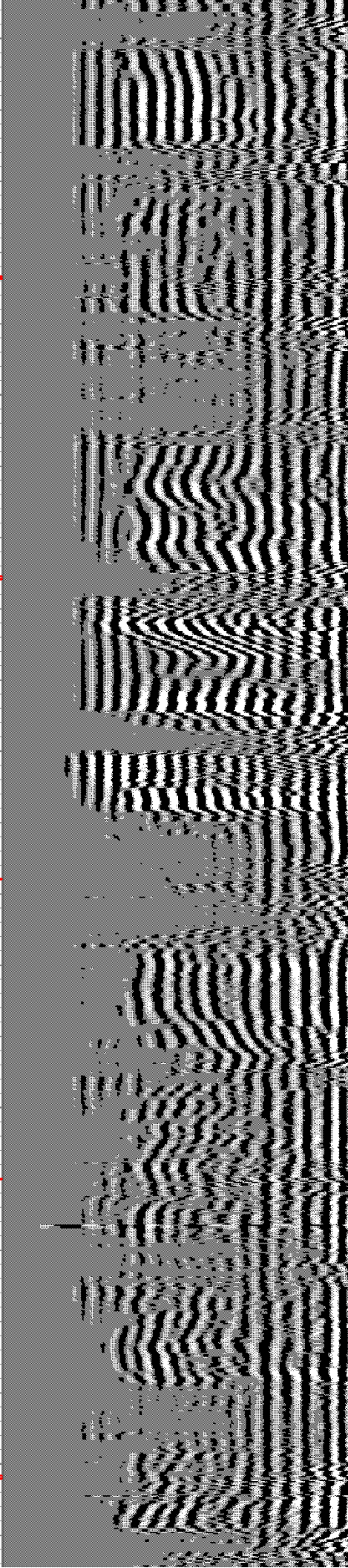
850

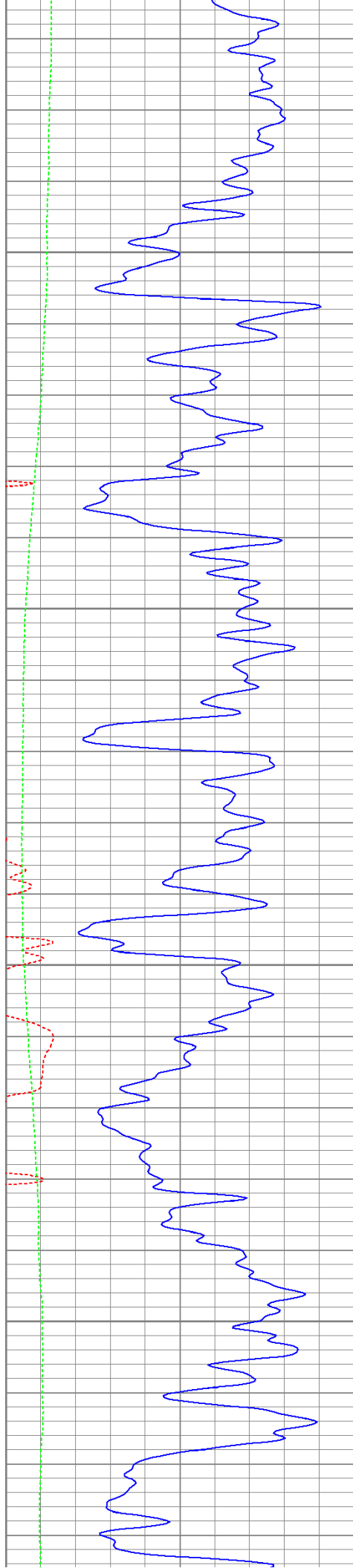
900

950

1000

1050



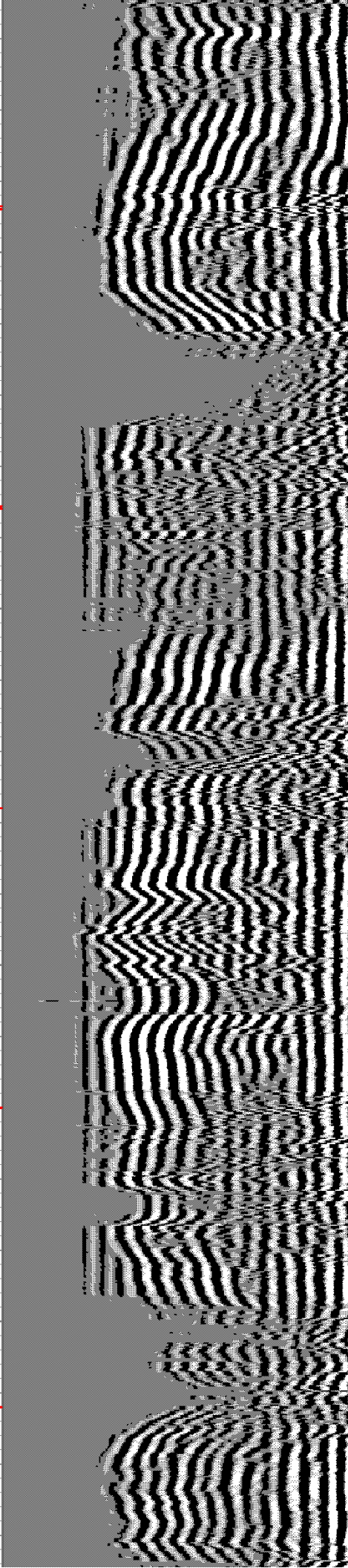
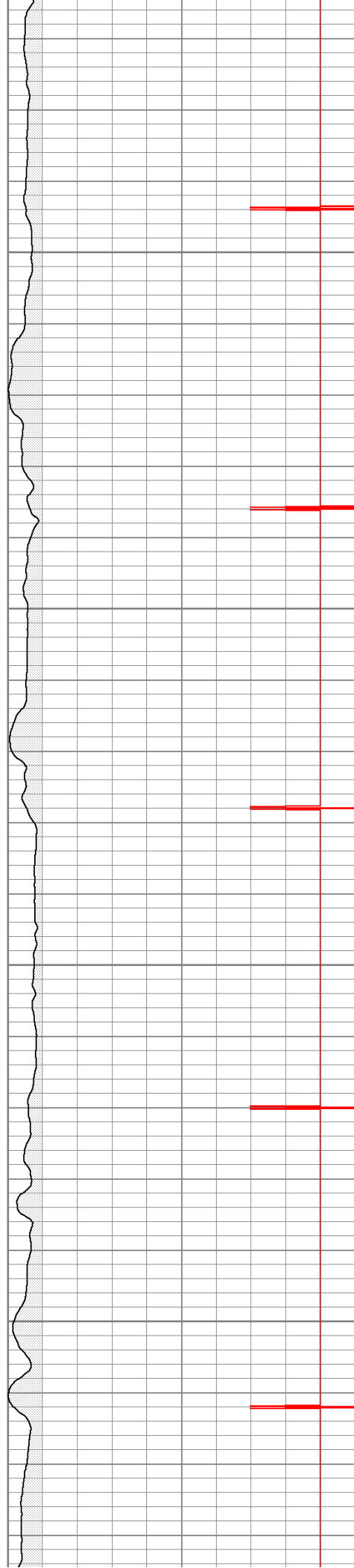


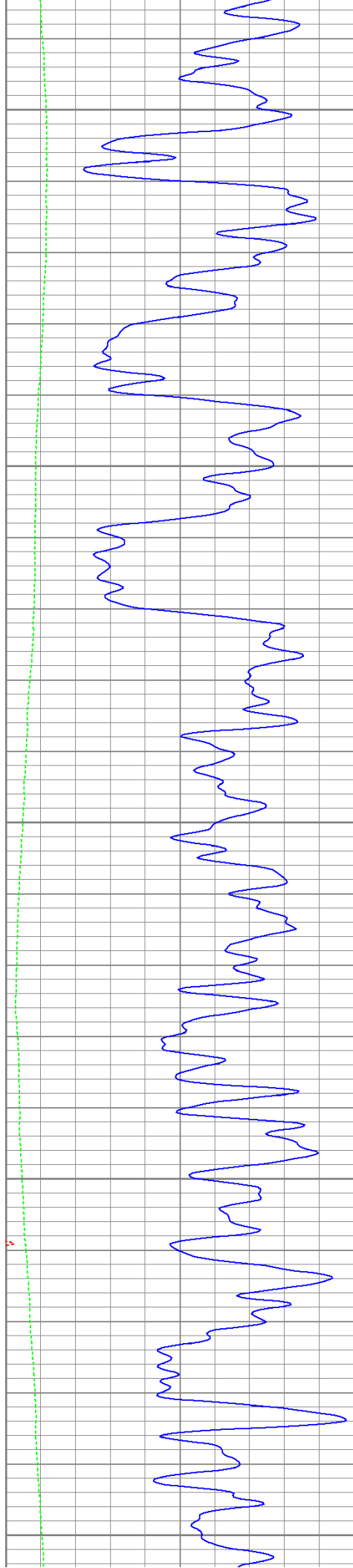
1100

1150

1200

1250





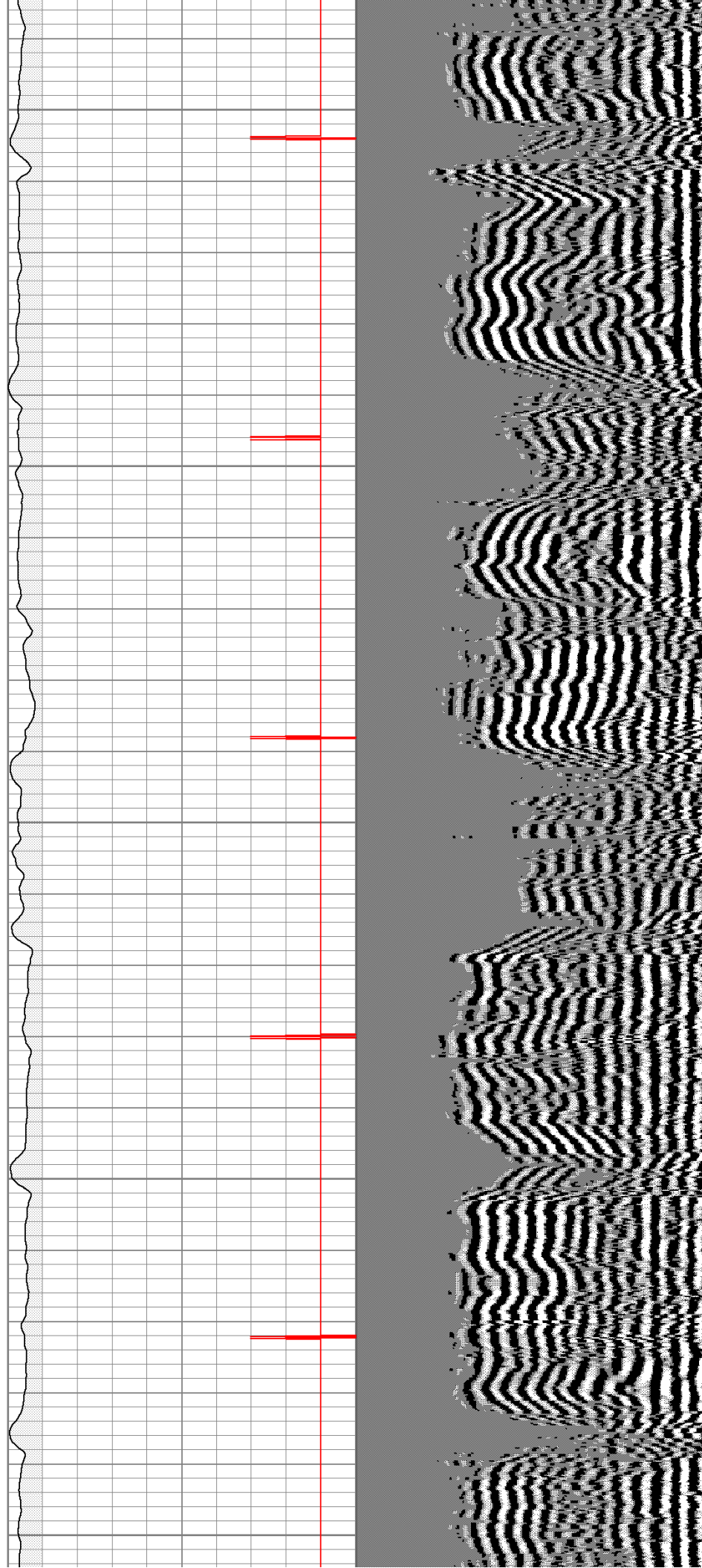
1300

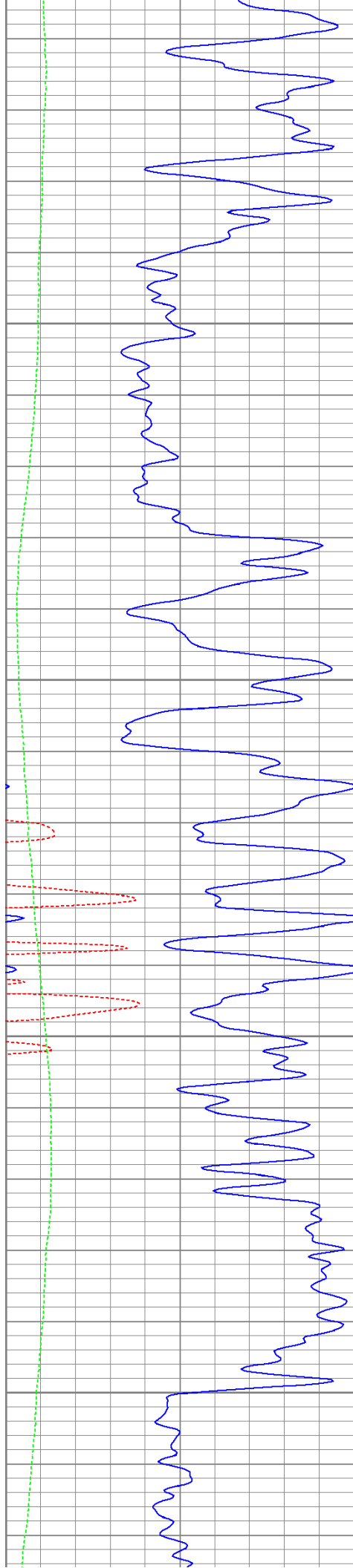
1350

1400

1450

1500





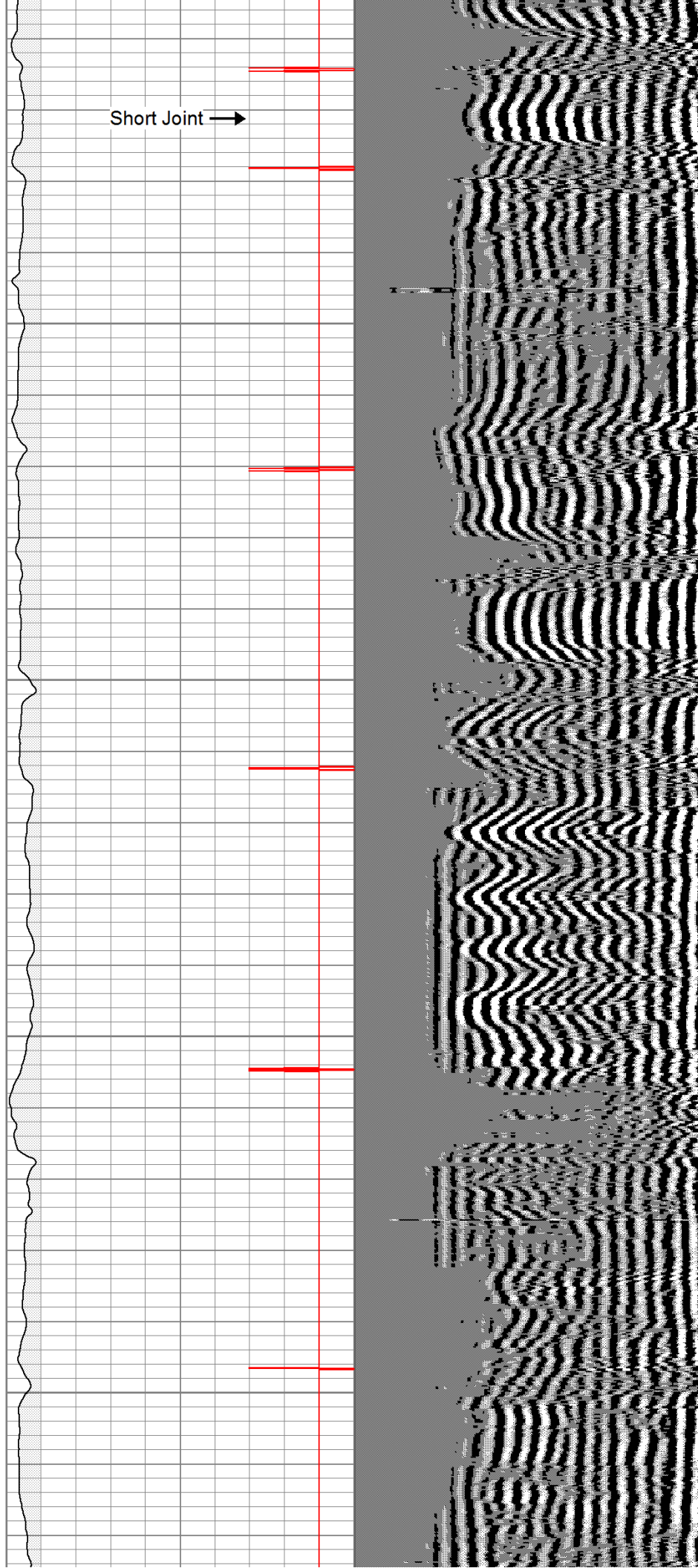
1550

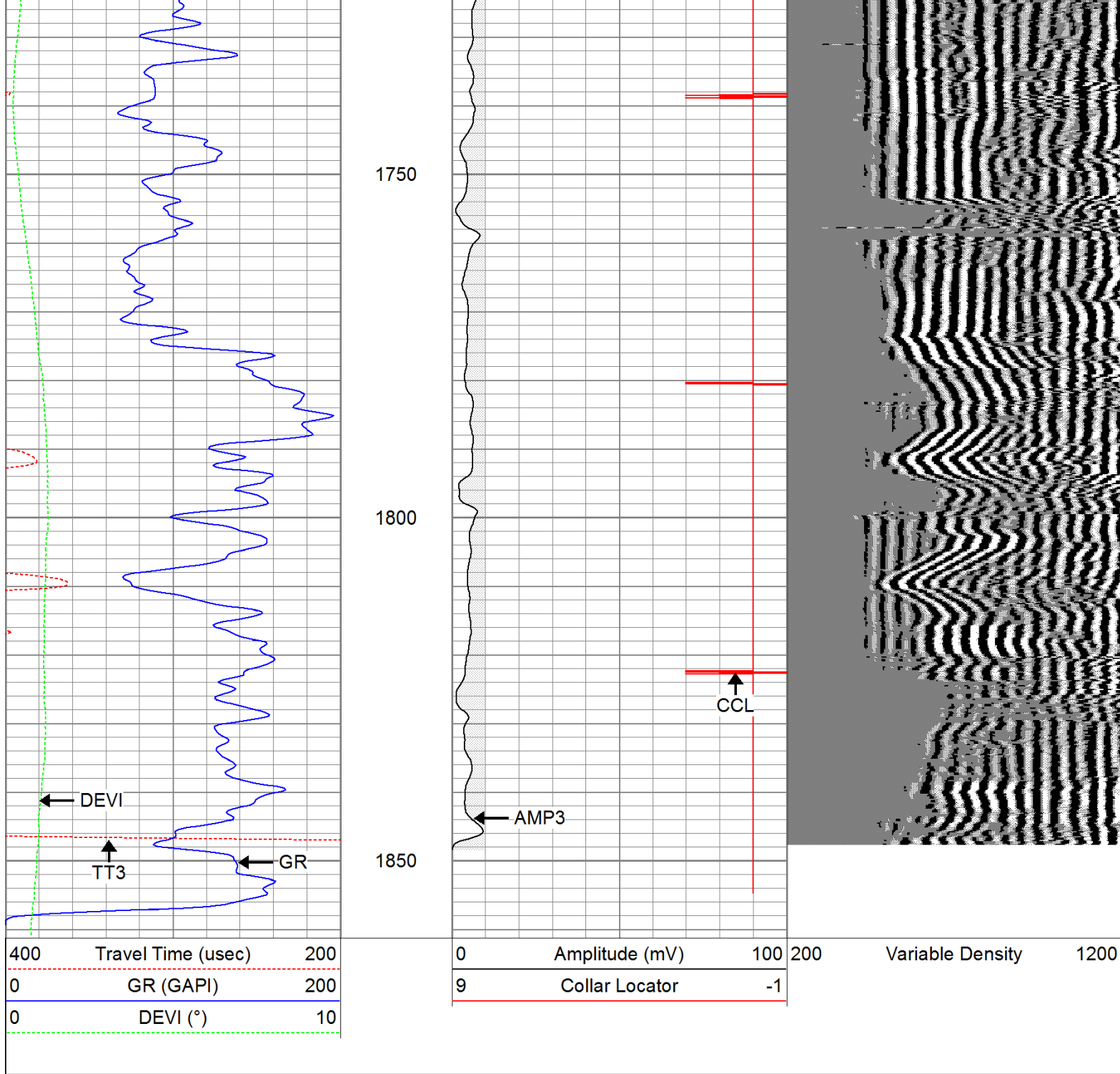
1600

1650

1700

Short Joint →



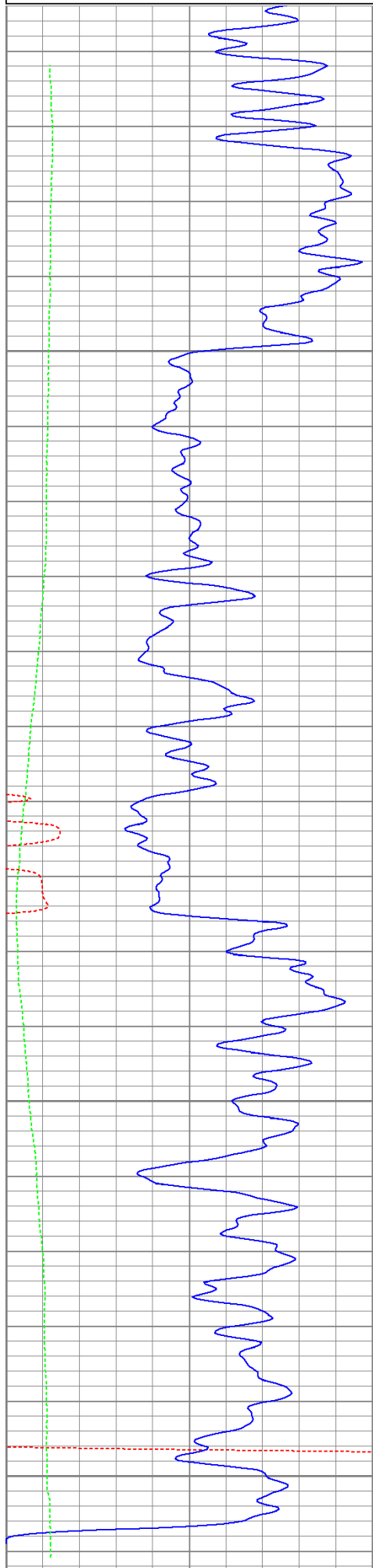


Repeat Pass

Database File: grantstr52511b.db
 Dataset Pathname: pass1
 Presentation Format: cbldig
 Dataset Creation: Wed May 25 11:37:38 2011 by Log Open-Cased 110302
 Charted by: Depth in Feet scaled 1:240

400	Travel Time (usec)	200
0	GR (GAPI)	200
0	DEVI (°)	10

0	Amplitude (mV)	100	200	Variable Density	1200
9	Collar Locator	-1			



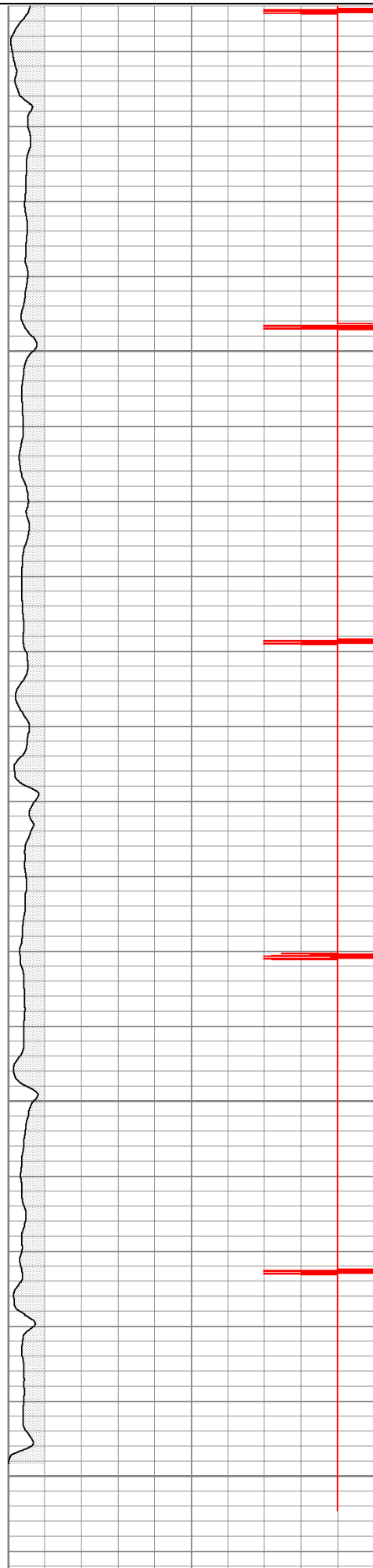
400	Travel Time (uSec)	200
0	GR (GAPI)	200

1700

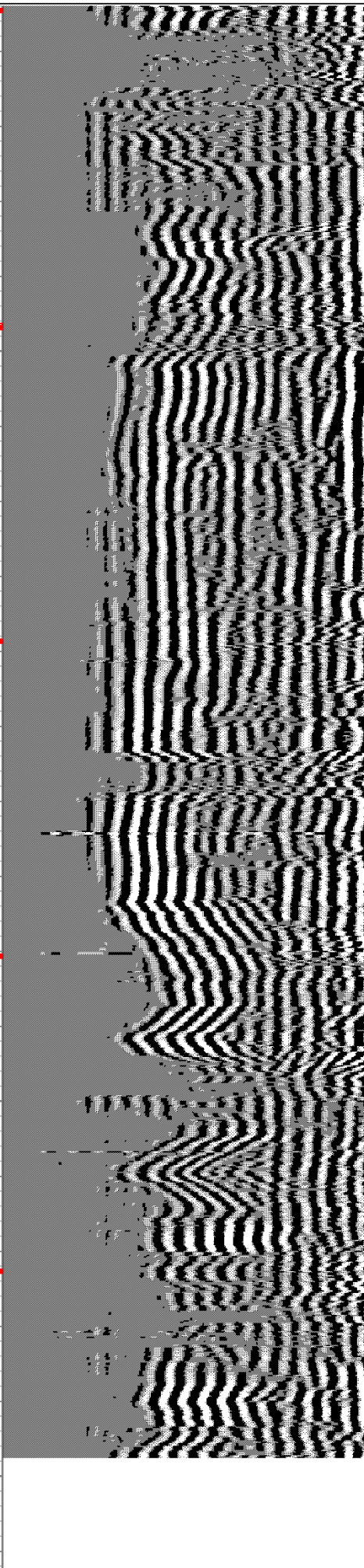
1750

1800

1850



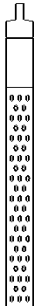
0	Amplitude (mV)	100
9	Collar Locator	-1



200	Variable Density	1200
-----	------------------	------

0	DEVI (°)	10
---	----------	----

Calibration Report					
Database File:	grantstr52511b.db				
Dataset Pathname:	pass1				
Dataset Creation:	Wed May 25 11:37:38 2011 by Log Open-Cased 110302				
Gamma Ray Calibration Report					
Serial Number:	080616				
Tool Model:	275D_INC				
Performed:	Wed May 04 17:31:09 2011				
Calibrator Value:	200.0	GAPI			
Background Reading:	50.0	cps			
Calibrator Reading:	250.0	cps			
Sensitivity:	1.0000	GAPI/cps			
Inclinometer Calibration Report					
Performed:	Wed May 04 17:39:54 2011				
	Low Read.	High Read.	Low Ref.	High Ref.	
X Accelerometer	-3585.20	3595.40	-1.00	1.00	gee
Y Accelerometer	-3619.40	3520.00	-1.00	1.00	gee
Z Accelerometer					
Cement Bond Log Calibration Report					
Serial Number:	081024				
Tool Model:	PROBEDIGITALCBL				
Performed:	Wed May 25 11:26:37 2011				
Depth:	45.379	ft			
Casing Diameter:	5.5	in			
	3' Spacing	5' Spacing			
Signal Zero:	0	0	mV		
Calibrated Amplitude:	85	85	mV		
Reading at Signal Zero:	-0.00598145	-0.00627441	V		
Reading in Free Pipe:	1.45662	1.23376	V		
Gain:	58.1158	68.5462			
Offset:	0.347616	0.430087			

Sensor	Offset (ft)	Schematic	Description	Len (ft)	OD (in)	Wt (lb)
			None	0.75	1.50	5.00
WVF3	14.54		CBL-PROBEDIGITALCBL (081024)	8.75	2.75	106.50
WVF5	13.54		PROBE DIGITAL CBL			

