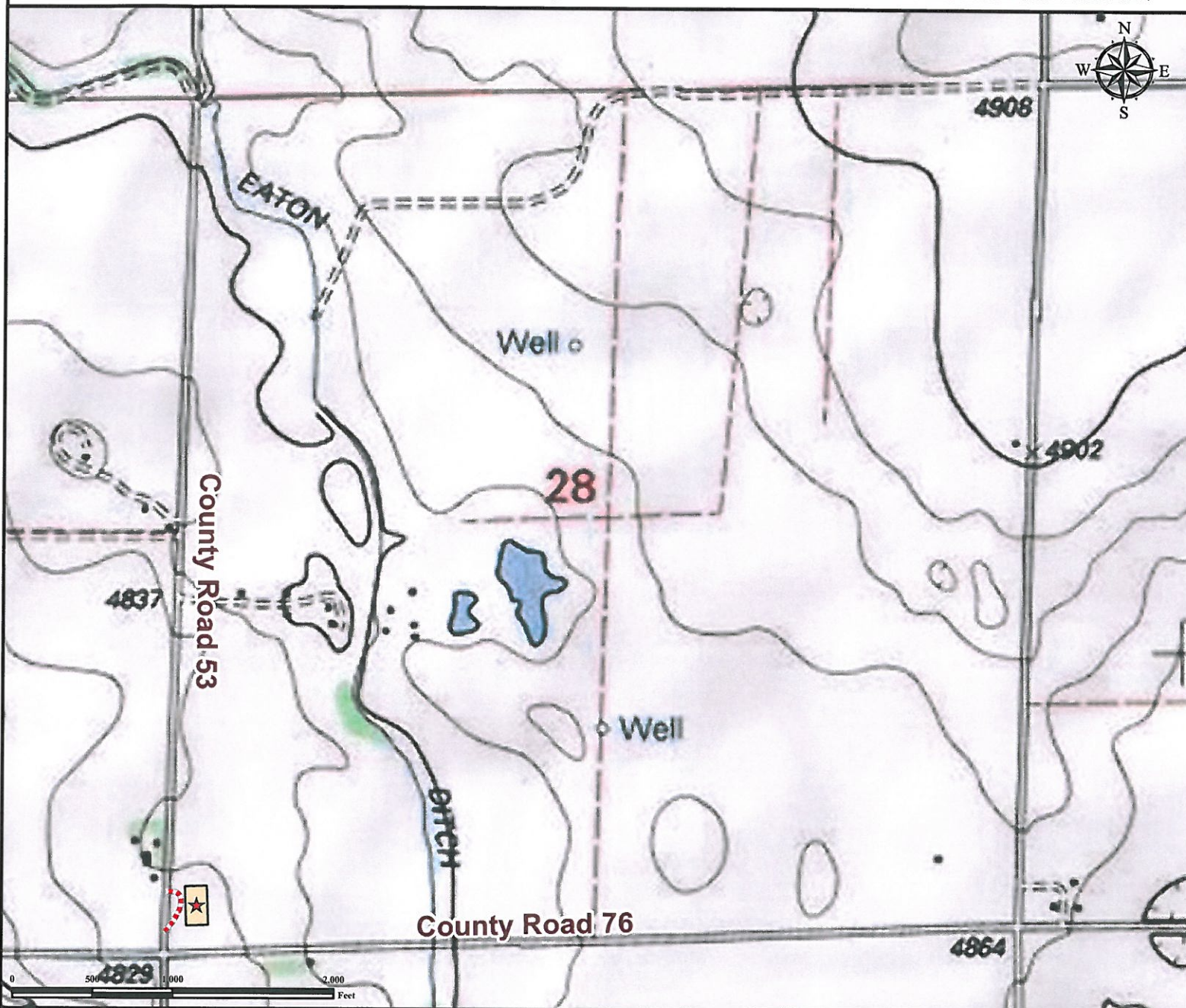


# Access Road Map

## ROBEL 12-28 FACILITY

SW¼ SW¼ SECTION 28, TOWNSHIP 7 NORTH, RANGE 64 WEST OF THE 6TH PRINCIPAL MERIDIAN



**From Eaton, CO:** From the intersection of US Highway 85 and Co Rd 74, go East on Co Rd 74  $\pm 7.8$  miles.  
Turn Left onto Co Rd 53 and drive North  $\pm 1.1$  mile.  
Turn Right onto proposed access road and proceed  $\pm 0.01$  miles to proposed facilities location.

*\*Facility size has been exaggerated to be clearly visible at this scale\**

Total distance from Eaton, CO to proposed well location is  $\pm 8.91$  Miles.

### Legend

Proposed Facilities

Proposed Access Road

### Reference Location

**\*\*Reference Point\*\***

Lat: 40.537394° Long: -104.564362° (NAD83)  
 Elevation: 4833 Feet



*Use our resources to find yours!*  
[www.petro-fs.com](http://www.petro-fs.com)  
 (303) 928-7128

Field Date: 05/18/2011  
 Drafting Date: 07/12/2011  
 Drafter: DMM  
 Checked By: BHF

Data Sources:  
 - Topo courtesy of USGS.

Prepared for:

**BAYSWATER**  
 EXPLORATION AND PRODUCTION, LLC