

Company	Pioneer Natural Resources	Company	Pioneer Natural Resources
Well	Gus 13-18 TR	Well	Gus 13-18 TR
Field	Purgatoire River	Field	Purgatoire River
County	Las Animas	County	Las Animas
State	CO	State	CO
Location:	API # : 05 071 09779 00		Other Services
SEC 18 TWP 32S RGE 65W		NW/SW	INCL
Permanent Datum	Ground level	Elevation	7304'
Log Measured From	Kelly Bushing 4' Above G.L.	K.B. 7308'	
Drilling Measured From	Kelly Bushing	D.F. -----	
		G.L. 7304'	

Date	5-3-11		
Run Number	One		
Depth Driller	1650'		
Depth Logger	1565'		
Bottom Logged Interval	1561'		
Top Log Interval	Surface		
Open Hole Size	7 7/8"		
Type Fluid	Water		
Density / Viscosity	///		
Max. Recorded Temp.	///		
Estimated Cement Top	20'		
Time Well Ready	10:45 A.M.		
Time Logger on Bottom	11:00 A.M.		
Equipment Number	T045		
Location	Hays, Ks.		
Recorded By	C. Sineros		
Witnessed By	Mr. David Martinez		
Borehole Record		Tubing Record	
Run Number	Bit	From	To
Casing Record	Size	Wgt/Ft	Top
Surface String	8 5/8"		00
Prot. String			
Production String	5.5"		00
Liner			

<<< Fold Here >>>

All interpretations are opinions based on inferences from electrical or other measurements and we cannot and do not guarantee the accuracy or correctness of any interpretation, and we shall not, except in the case of gross or willful negligence on our part, be liable or responsible for any loss, costs, damages, or expenses incurred or sustained by anyone resulting from any interpretation made by any of our officers, agents or employees. These interpretations are also subject to our general terms and conditions set out in our current Price Schedule.

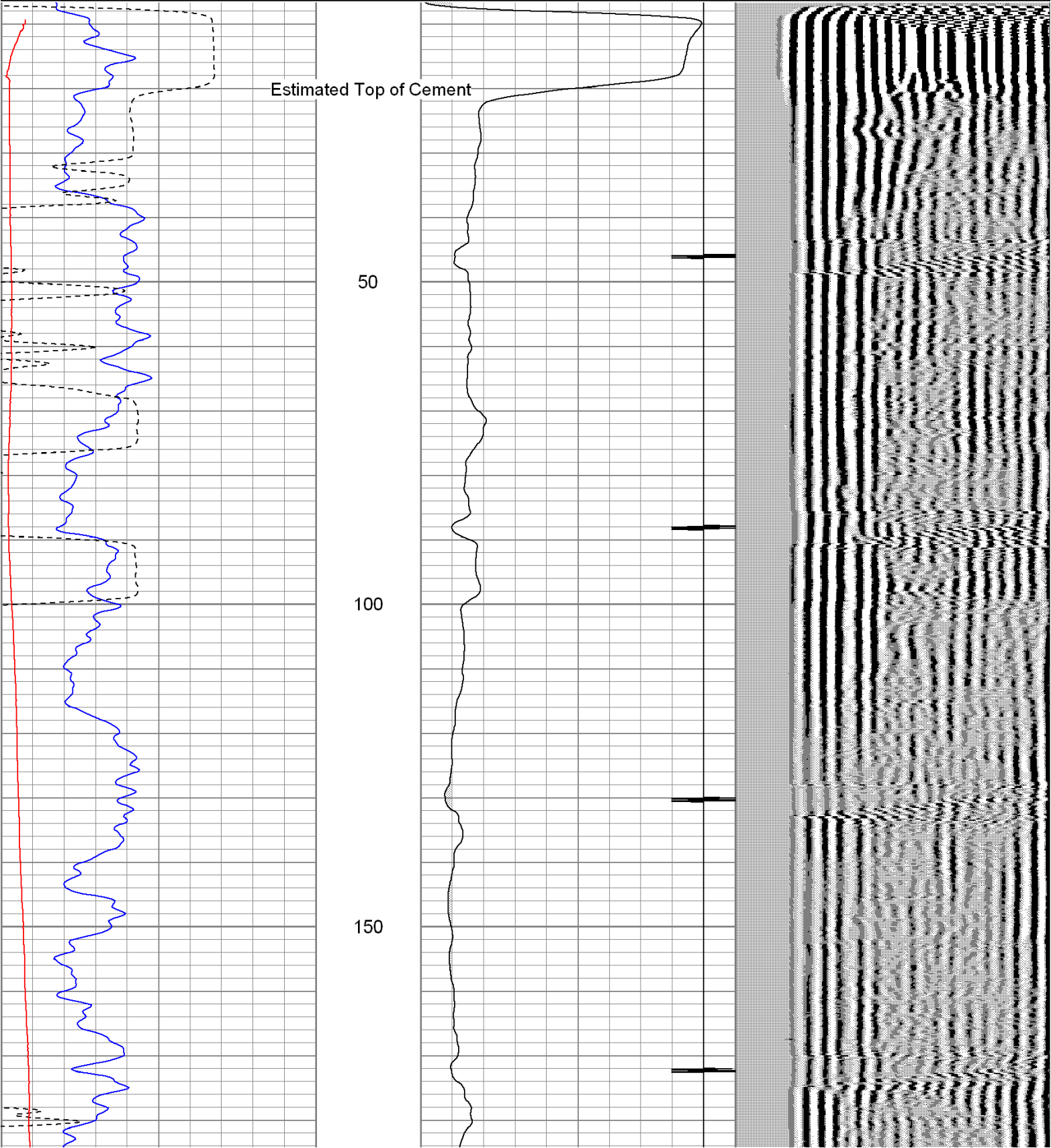
Comments

Log ran with 1000 PSI

Database File: gustr50311.db
Dataset Pathname: pass2
Presentation Format: cblrtd
Dataset Creation: Tue May 03 11:07:23 2011 by Log Open-Cased 100827
Charted by: Depth in Feet scaled 1:240

0	GR (GAPI)	150
400	TT3 (usec)	200
<hr/>		
0	DEVI (°)	10

0	AMP3 (mV)	100	200	Variable Density	1200
18	CCL	-2			





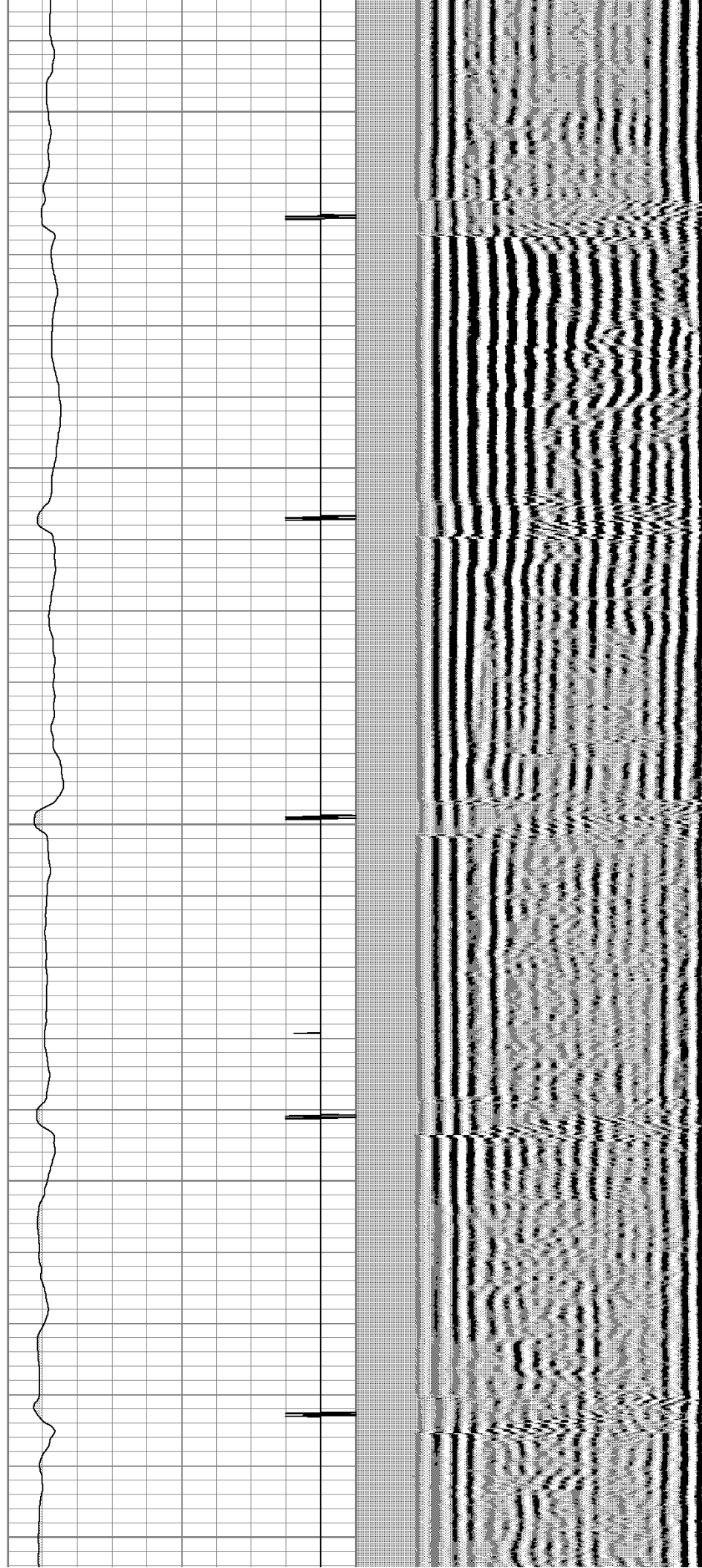
200

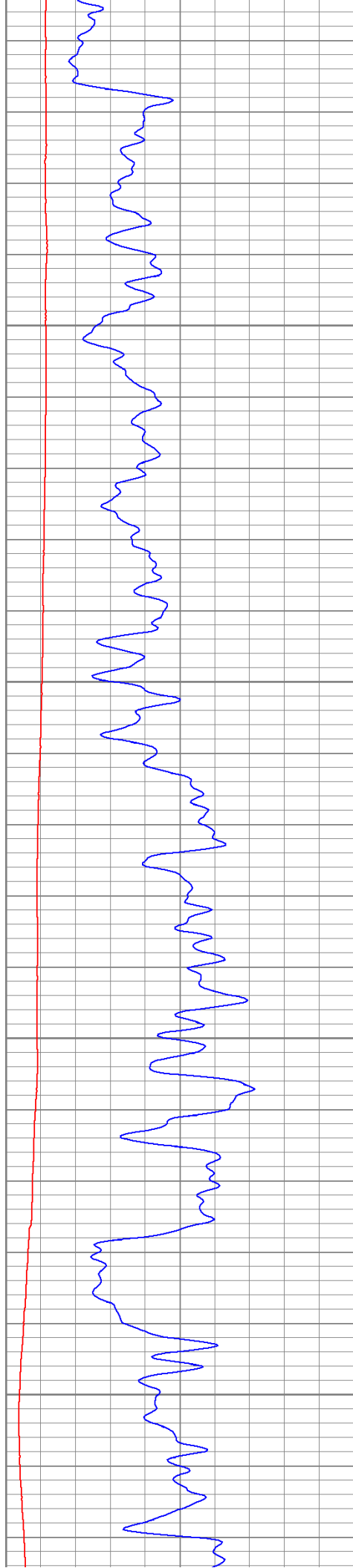
250

300

350

400



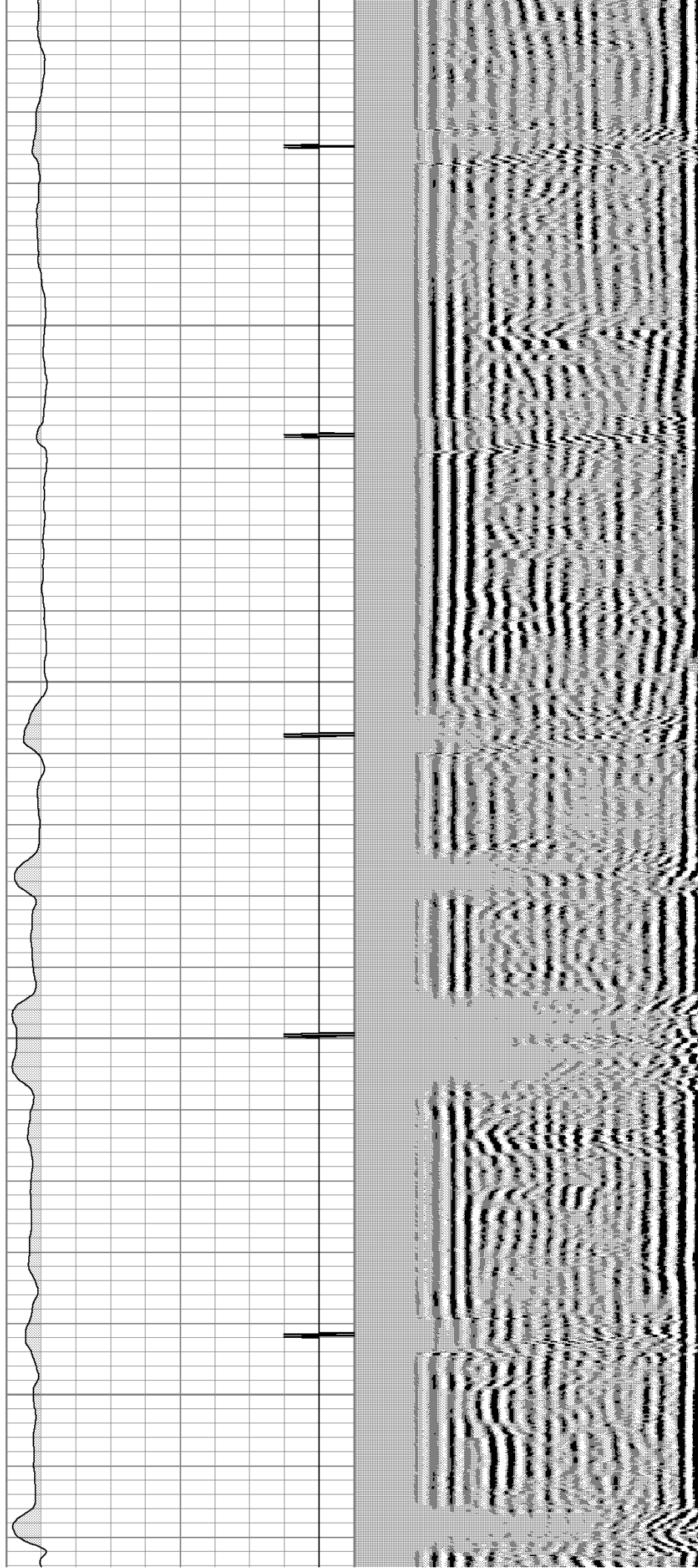


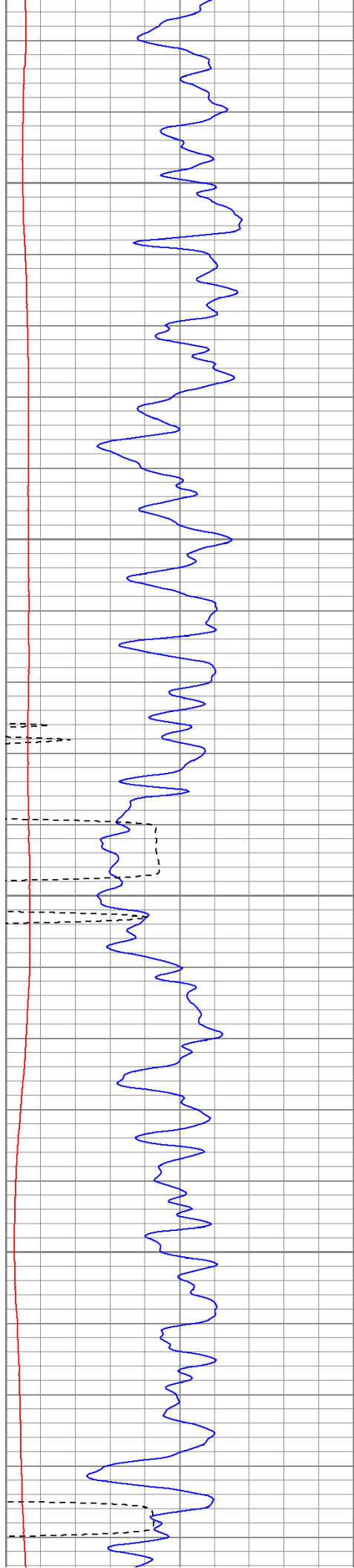
450

500

550

600



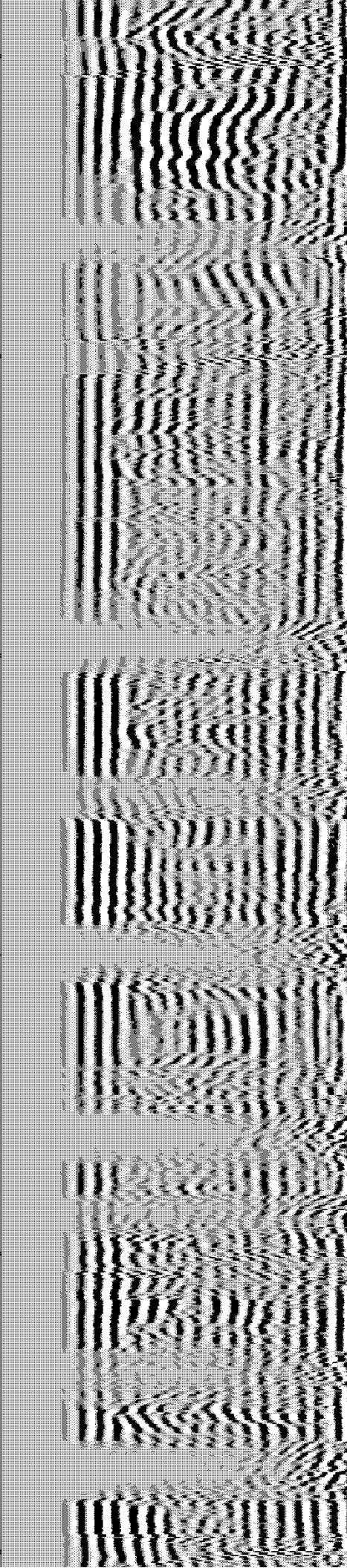
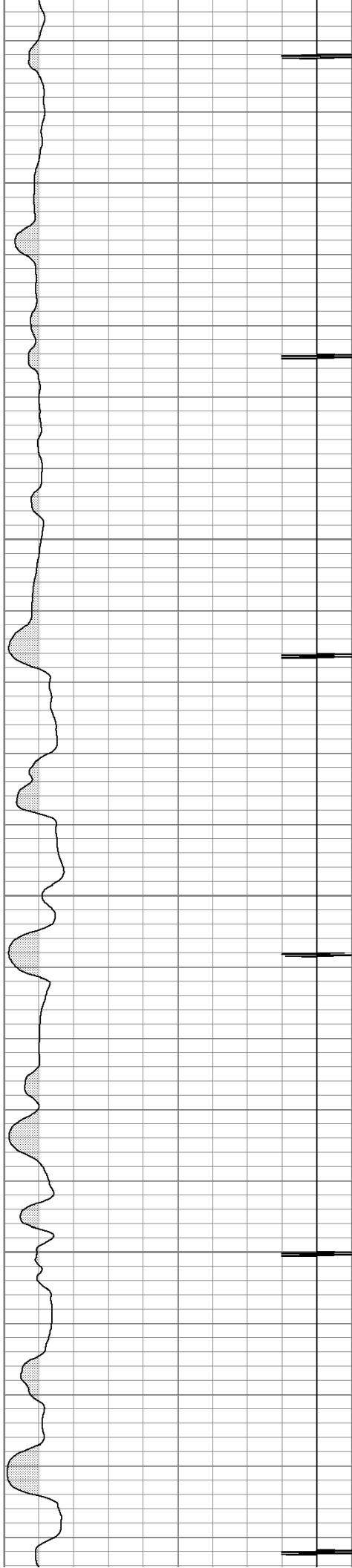


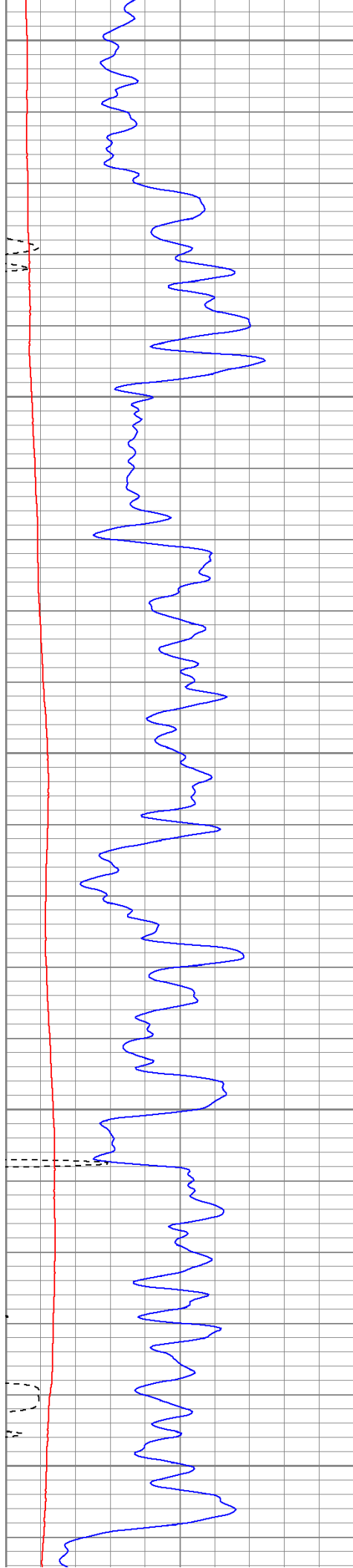
650

700

750

800





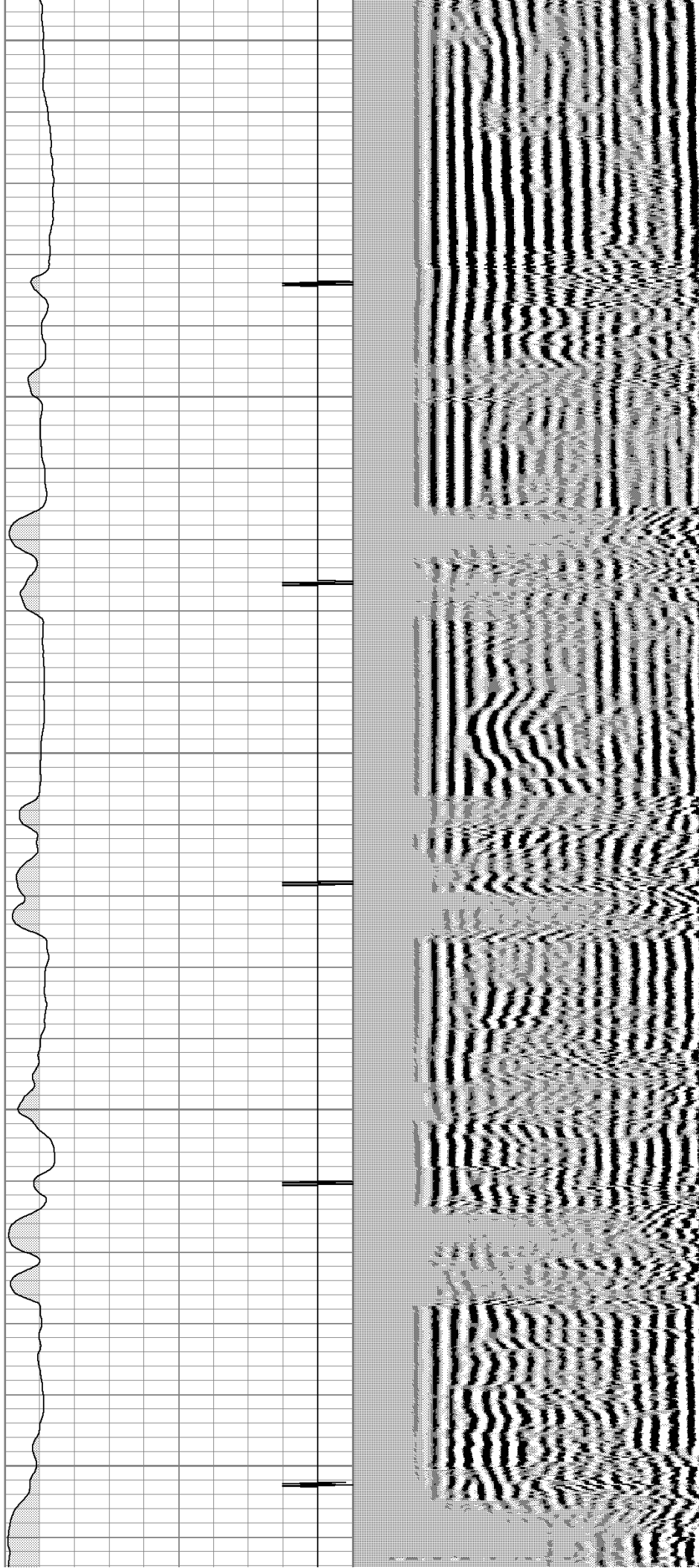
850

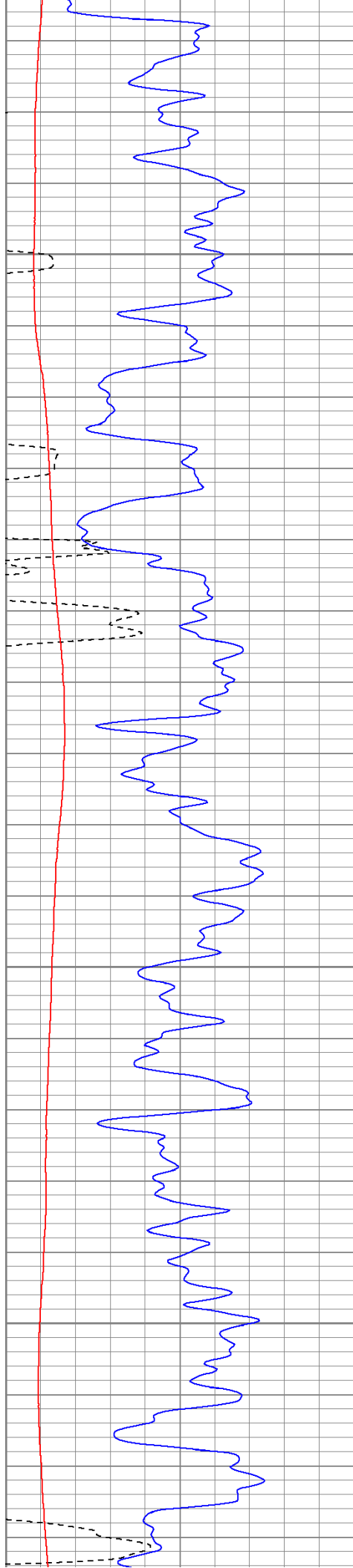
900

950

1000

1050





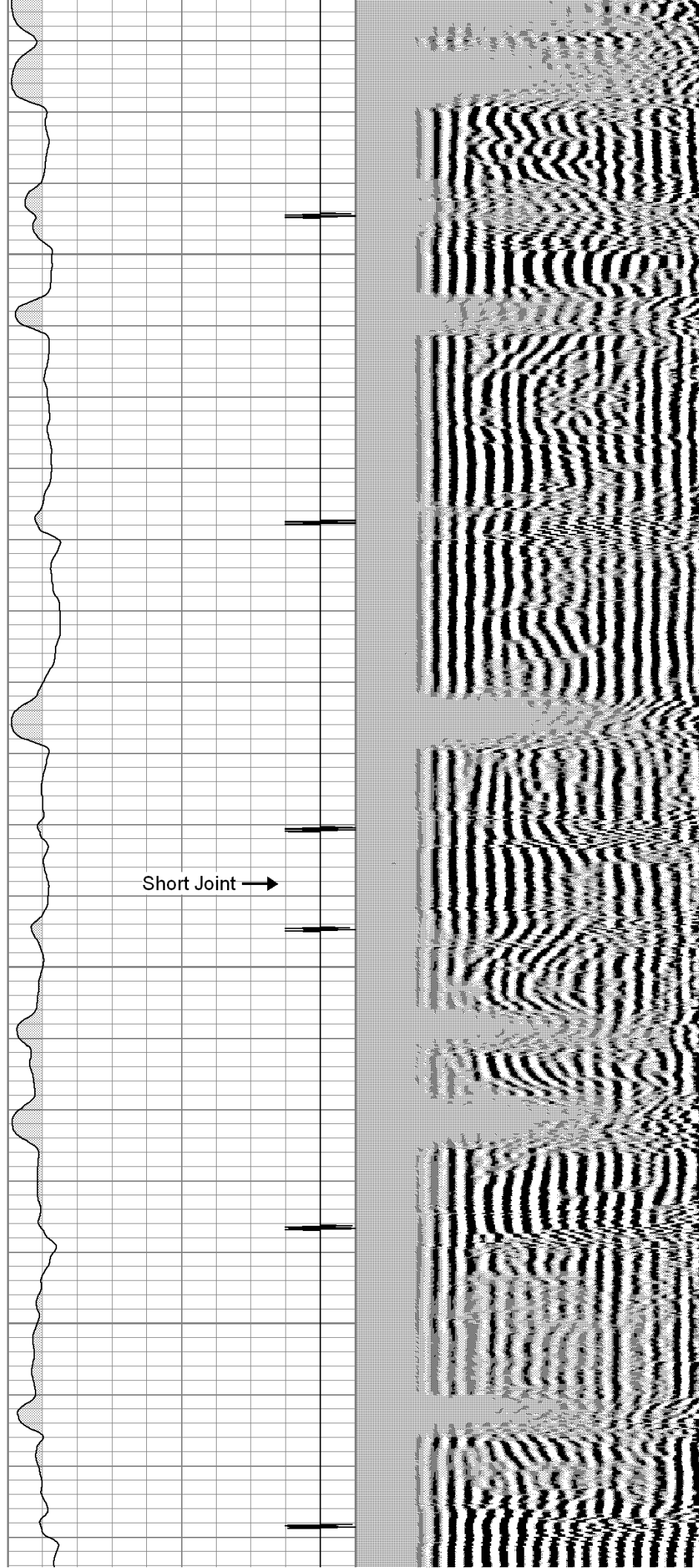
1100

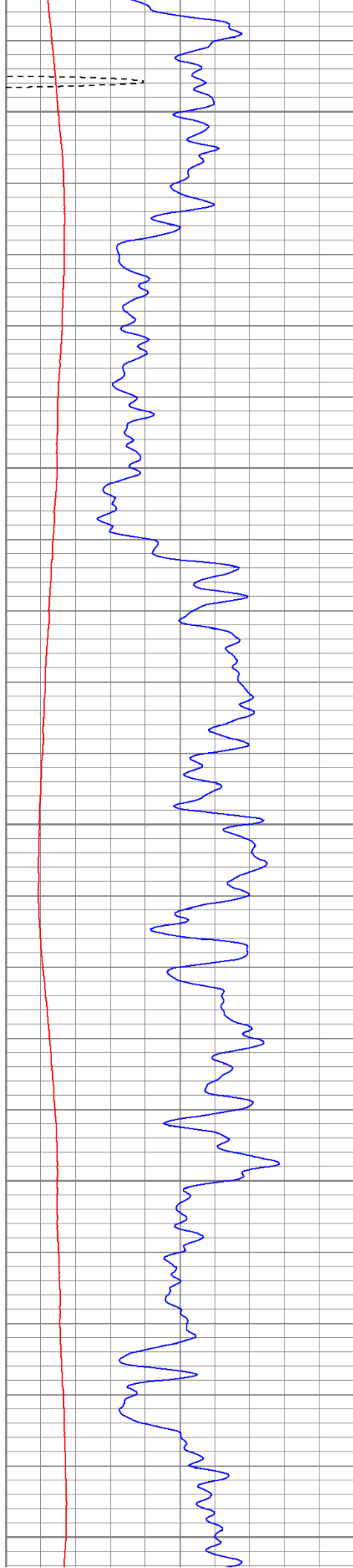
1150

1200

1250

Short Joint →





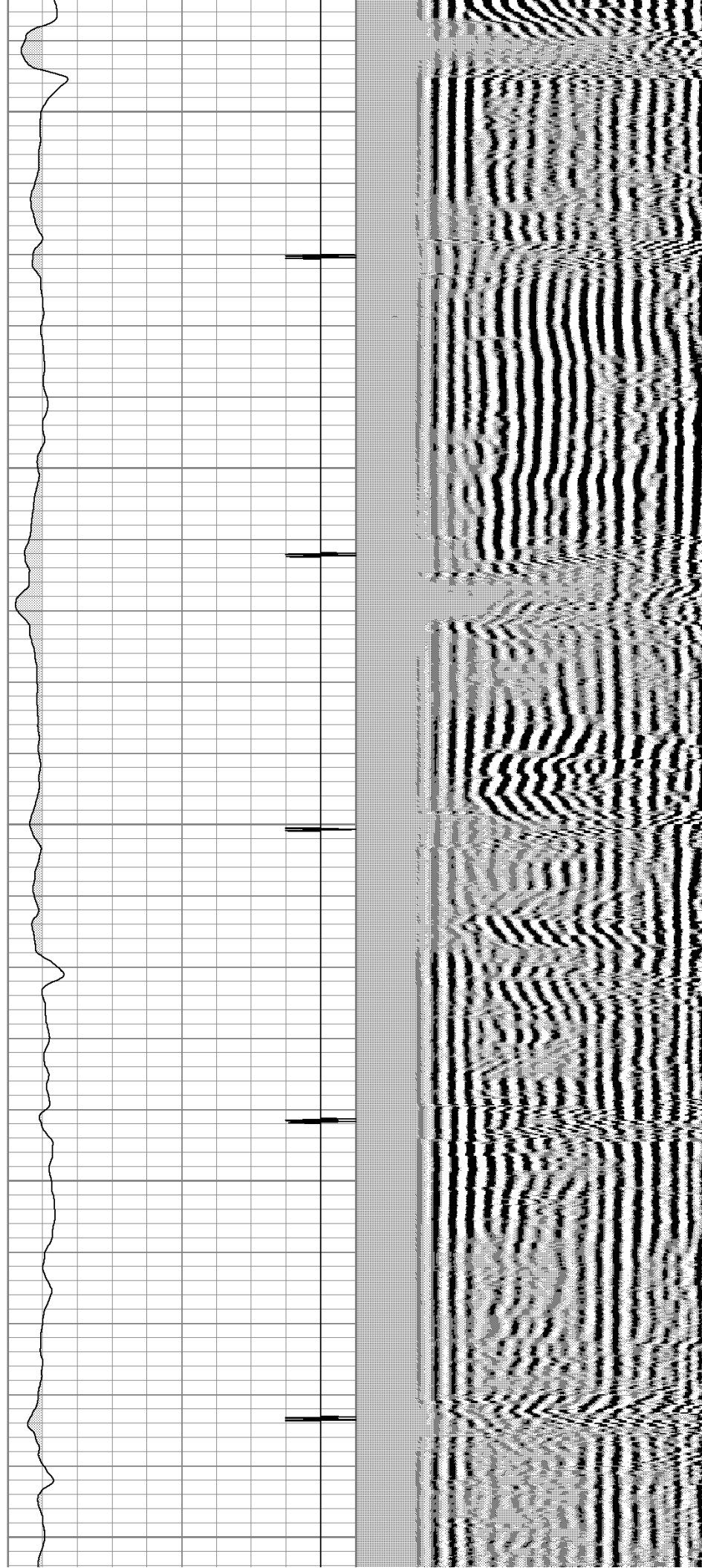
1300

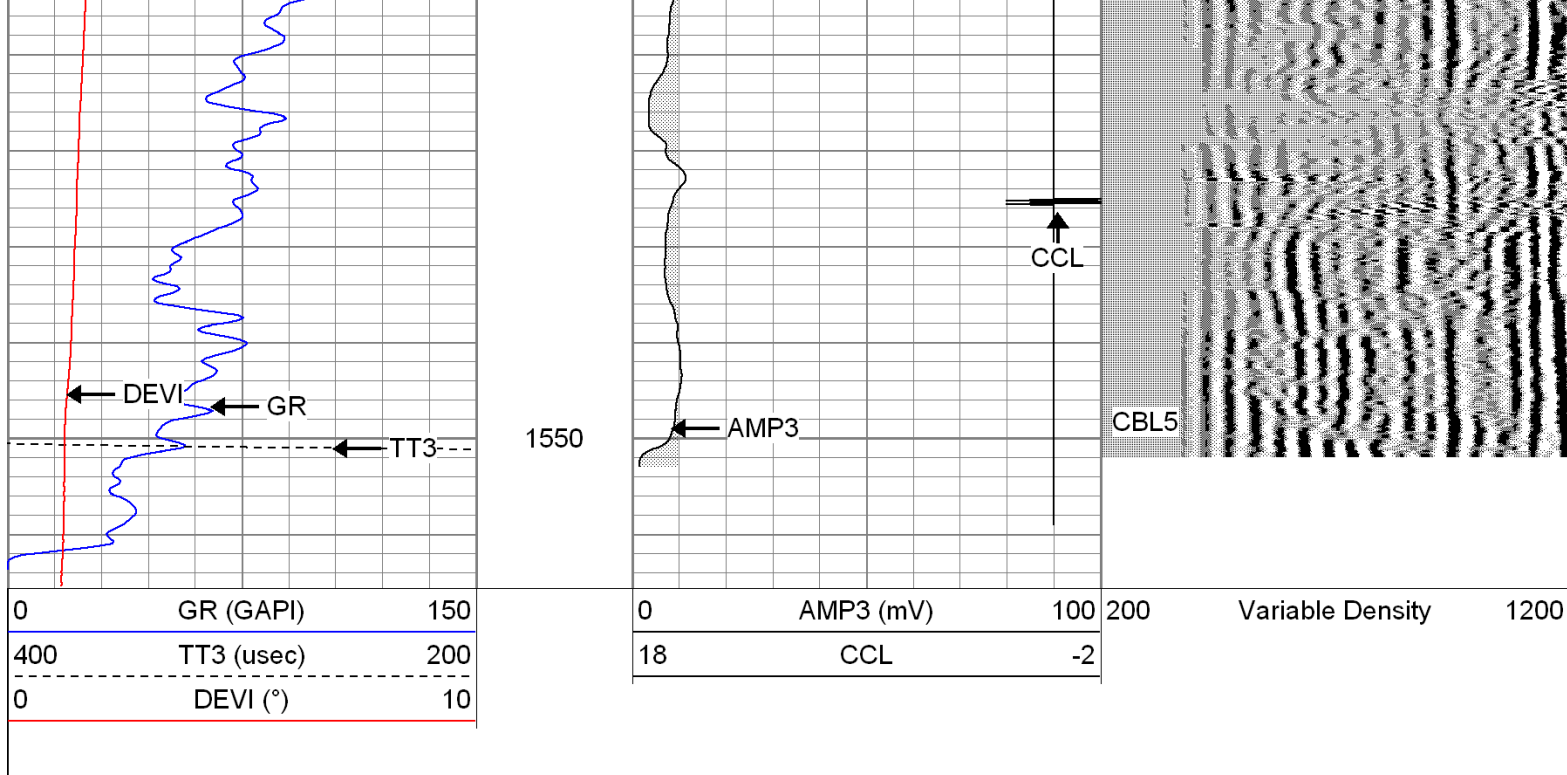
1350

1400

1450

1500

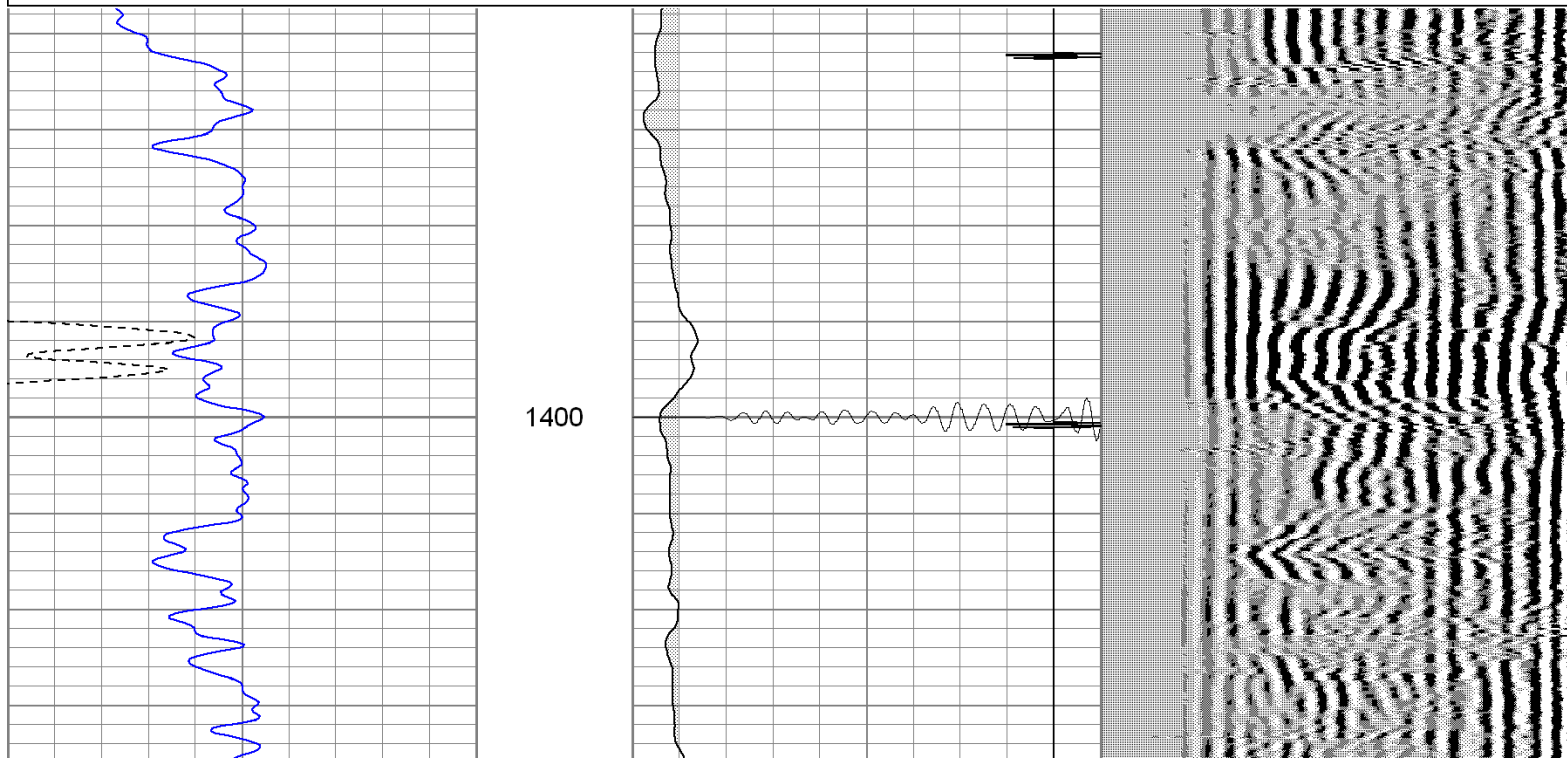


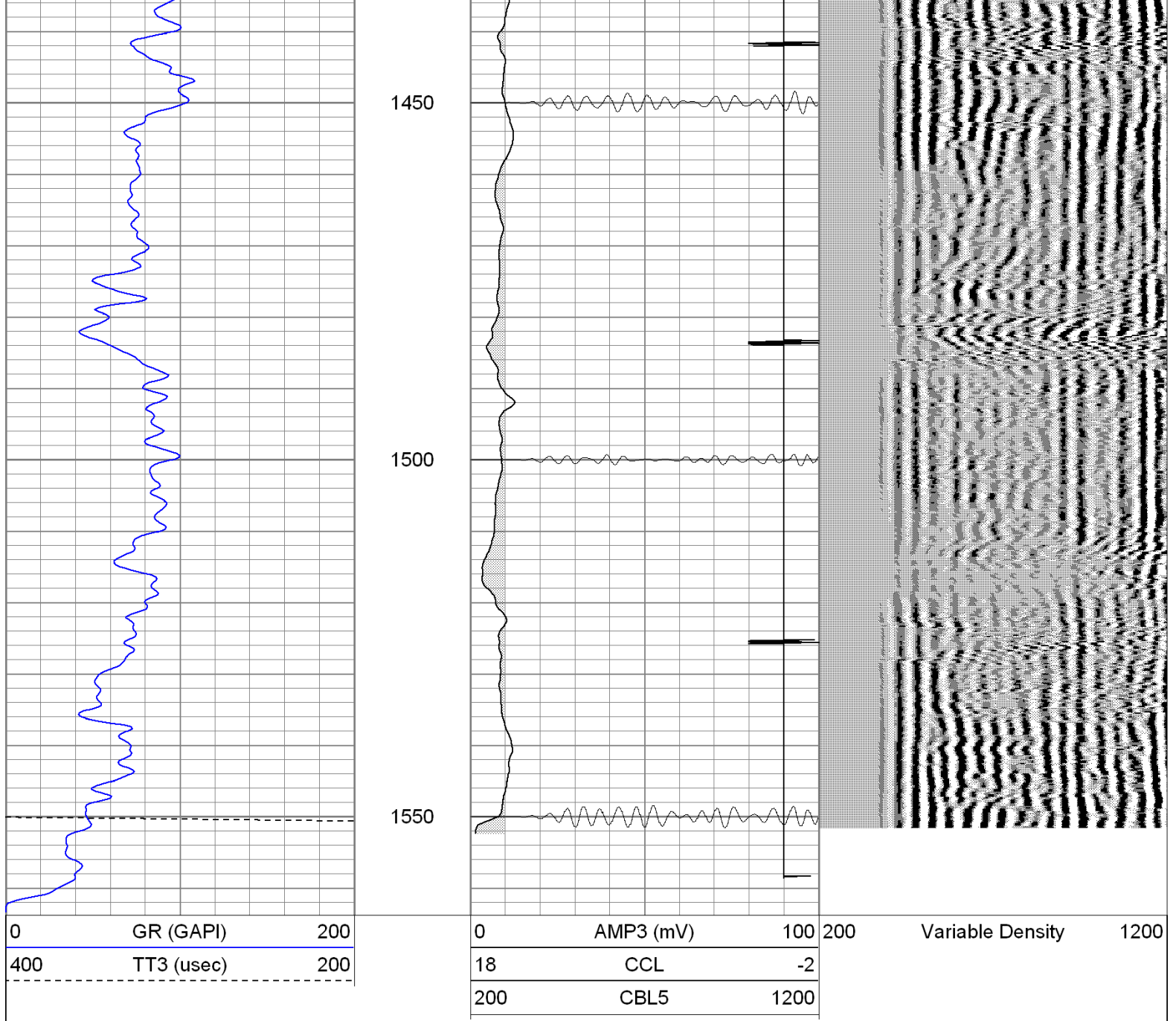


Repeat Section

Database File: gustr50311.db
 Dataset Pathname: pass1
 Presentation Format: cblrt
 Dataset Creation: Tue May 03 10:59:39 2011 by Log Open-Cased 100827
 Charted by: Depth in Feet scaled 1:240

0	GR (GAPI)	200	0	AMP3 (mV)	100	200	Variable Density	1200
400	TT3 (usec)	200	18	CCL	-2			
			200	CBL5	1200			





Calibration Report		
Database File:	gustr50311.db	
Dataset Pathname:	pass1	
Dataset Creation:	Tue May 03 10:59:39 2011 by Log Open-Cased 100827	
Gamma Ray Calibration Report		
Serial Number:	081014	
Tool Model:	275D_INC	
Performed:	Tue May 03 09:12:36 2011	
Calibrator Value:	200.0	GAPI
Background Reading:	50.0	cps
Calibrator Reading:	250.0	cps
Sensitivity:	0.6000	GAPI/cps
Inclinometer Calibration Report		
Performed:	Mon May 02 13:41:58 2011	

	Low Read.	High Read.	Low Ref.	High Ref.	
X Accelerometer	-3589.40	3580.00	-1.00	1.00	gee
Y Accelerometer	-3673.00	3520.20	-1.00	1.00	gee
Z Accelerometer					

Cement Bond Log Calibration Report

Serial Number:	020406			
Tool Model:	P1			
Performed:	Tue May 03 09:15:04 2011			
Depth:	23.7983	ft		
Casing Diameter:	5.5	in		
	3' Spacing		5' Spacing	
Signal Zero:	1		0	mV
Calibrated Amplitude:	85		85	mV
Reading at Signal Zero:	-0.0125977		-0.0121338	V
Reading in Free Pipe:	1.66		1.67864	V
Gain:	50.2213		50.2729	
Offset:	1.63267		0.610001	

Sensor	Offset (ft)	Schematic	Description	Len (ft)	OD (in)	Wt (lb)
			None	0.75	1.50	5.00
WVF3	14.69					
WVF5	13.69		CBL-P1 (020406) Probe1	8.00	2.75	100.00
			X	3.00	1.69	25.00
CCL	6.50					
ACCX	4.83		GR-275D_INC (081014)	4.50	2.75	50.00
ACCY	4.83		2-3/4" GR-CCL with Inclination			
ACCZ	4.83					
GR	3.83		X	3.00	1.69	25.00

Dataset:	gustr50311.db: field/well/run1/pass1
Total Length:	19.25 ft
Total Weight:	205.00 lb
O.D.	2.75 in