

Company Pioneer Natural Resources
Well Argon 46-31
Field Purgatoire River
County Las Animas
State CO

Company Pioneer Natural Resources
Well Argon 46-31
Field Purgatoire River
County Las Animas State CO

Location: API #: 05 071 09823 00

NE/SE

SEC 31 TWP 33S RGE 65W

INCL

Other Services

Permanent Datum Ground level Elevation 6538'
Log Measured From Kelly Bushing 5' Above G.L.
Drilling Measured From Kelly Bushing

Elevation
K.B. 6543'
D.F. -----
G.L. 6538'

Date 5-3-11

Run Number One
Depth Driller 925'
Depth Logger 890'
Bottom Logged Interval 886'
Top Log Interval Surface
Open Hole Size 7 7/8"
Type Fluid Water
Density / Viscosity
Max. Recorded Temp. 644'
Estimated Cement Top 644'
Time Well Ready 7:30 a.m.
Time Logger on Bottom 7:45 a.m.
Equipment Number T045
Location Hays, Ks.
Recorded By L. Smith
Witnessed By Mr. David Martinez

Borehole Record
Run Number Bit From To Size Weight From To

Casing Record
Surface String 8 5/8" Wgt/Ft Top Bottom
Prot. String
Production String 5.5" 00 899'

Liner

<<< Fold Here >>>

All interpretations are opinions based on inferences from electrical or other measurements and we cannot and do not guarantee the accuracy or correctness of any interpretation, and we shall not, except in the case of gross or willful negligence on our part, be liable or responsible for any loss, costs, damages, or expenses incurred or sustained by anyone resulting from any interpretation made by any of our officers, agents or employees. These interpretations are also subject to our general terms and conditions set out in our current Price Schedule.

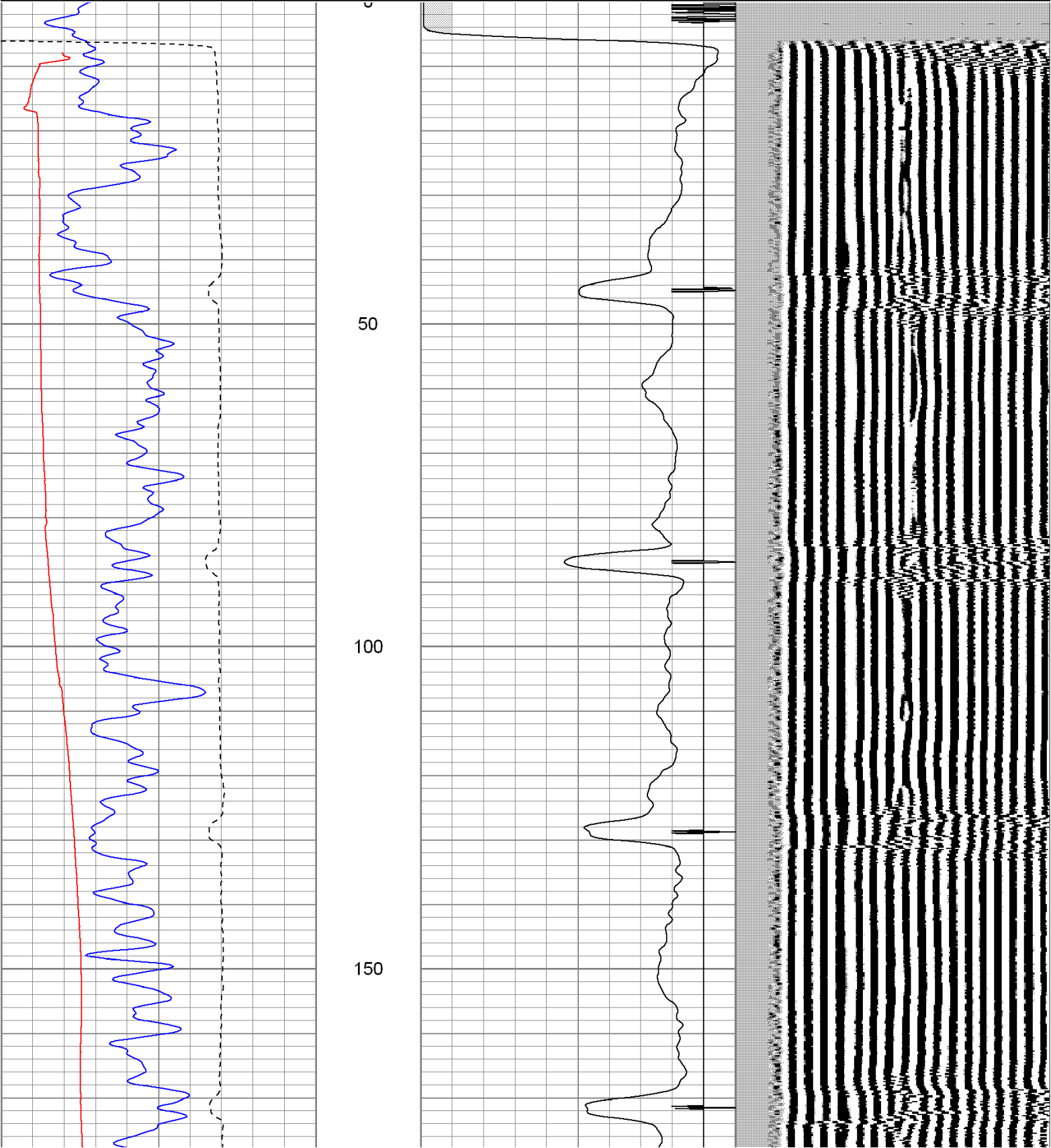
Comments

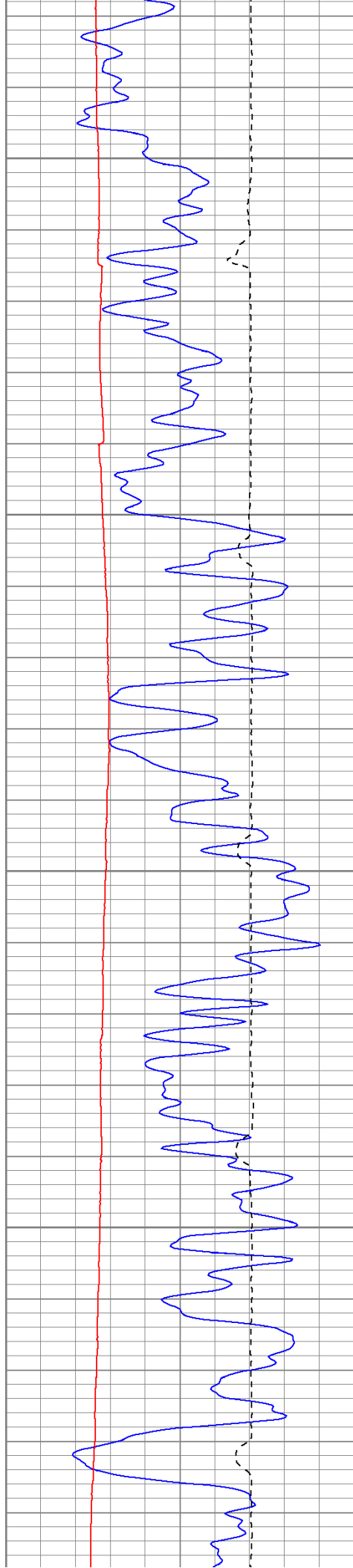
Log ran with 1000 PSI

Database File: argon5311cbl.db
Dataset Pathname: pass3.1
Presentation Format: cblrtd
Dataset Creation: Tue May 03 09:15:53 2011 by Calc Open-Cased 100827
Charted by: Depth in Feet scaled 1:240

0	GR (GAPI)	150
400	TT3 (usec)	200
0	DEVI (°)	10

0	AMP3 (mV)	100	200	Variable Density	1200
18	CCL	-2			



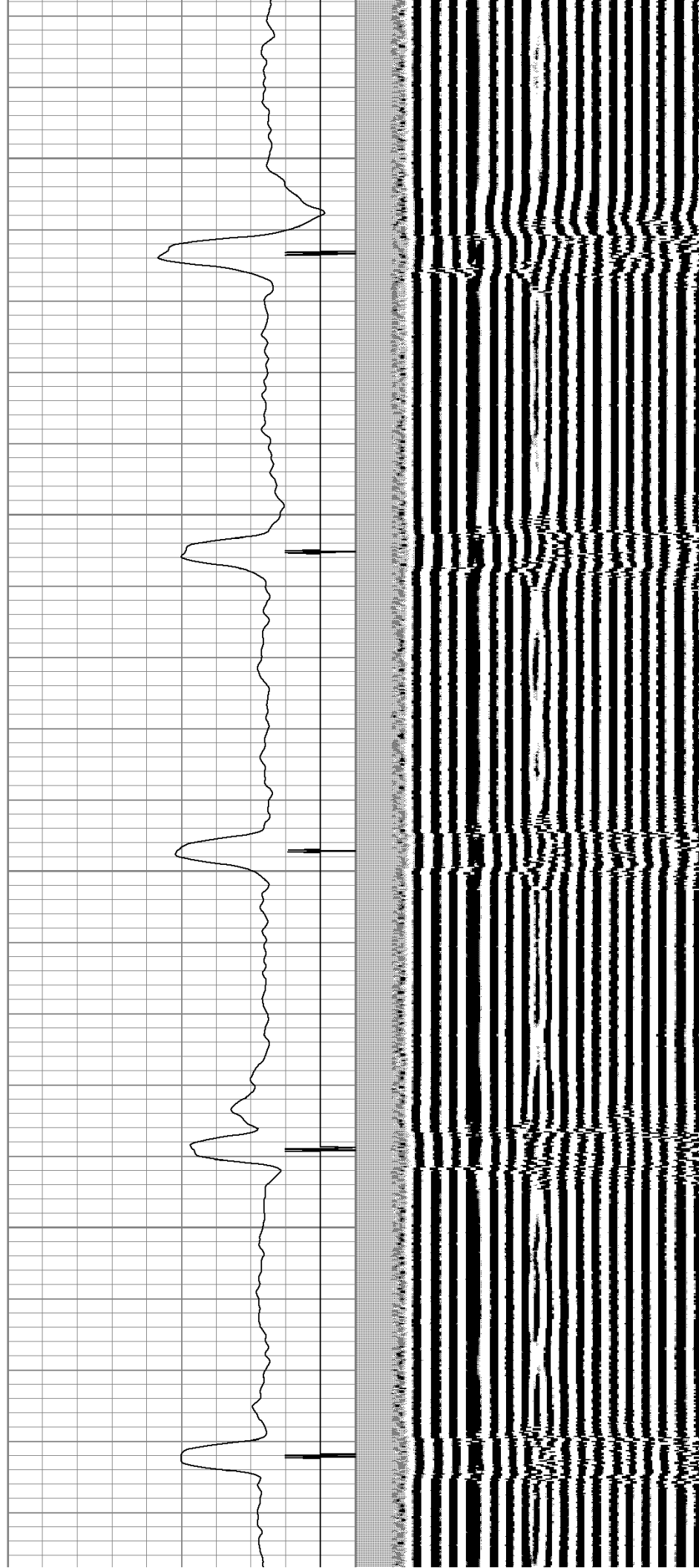


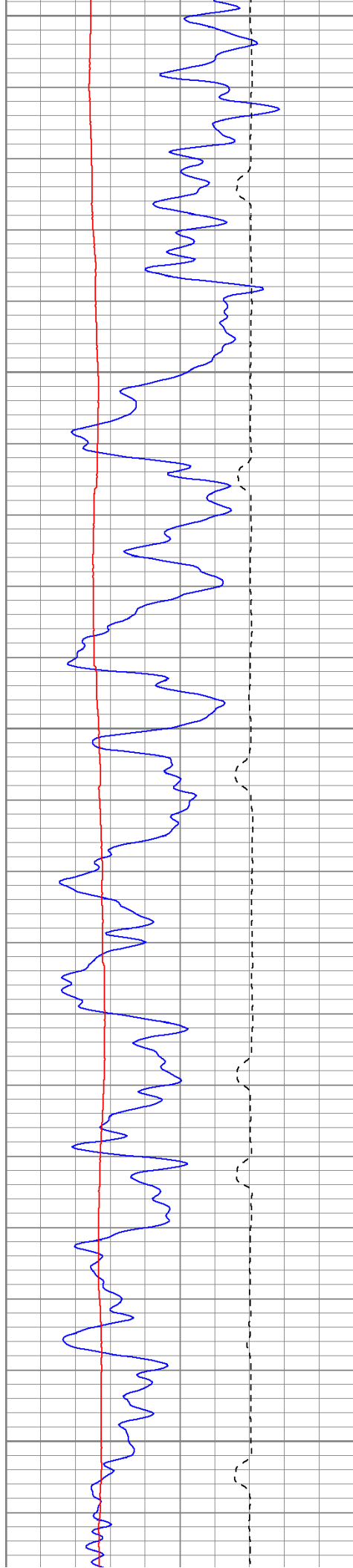
200

250

300

350





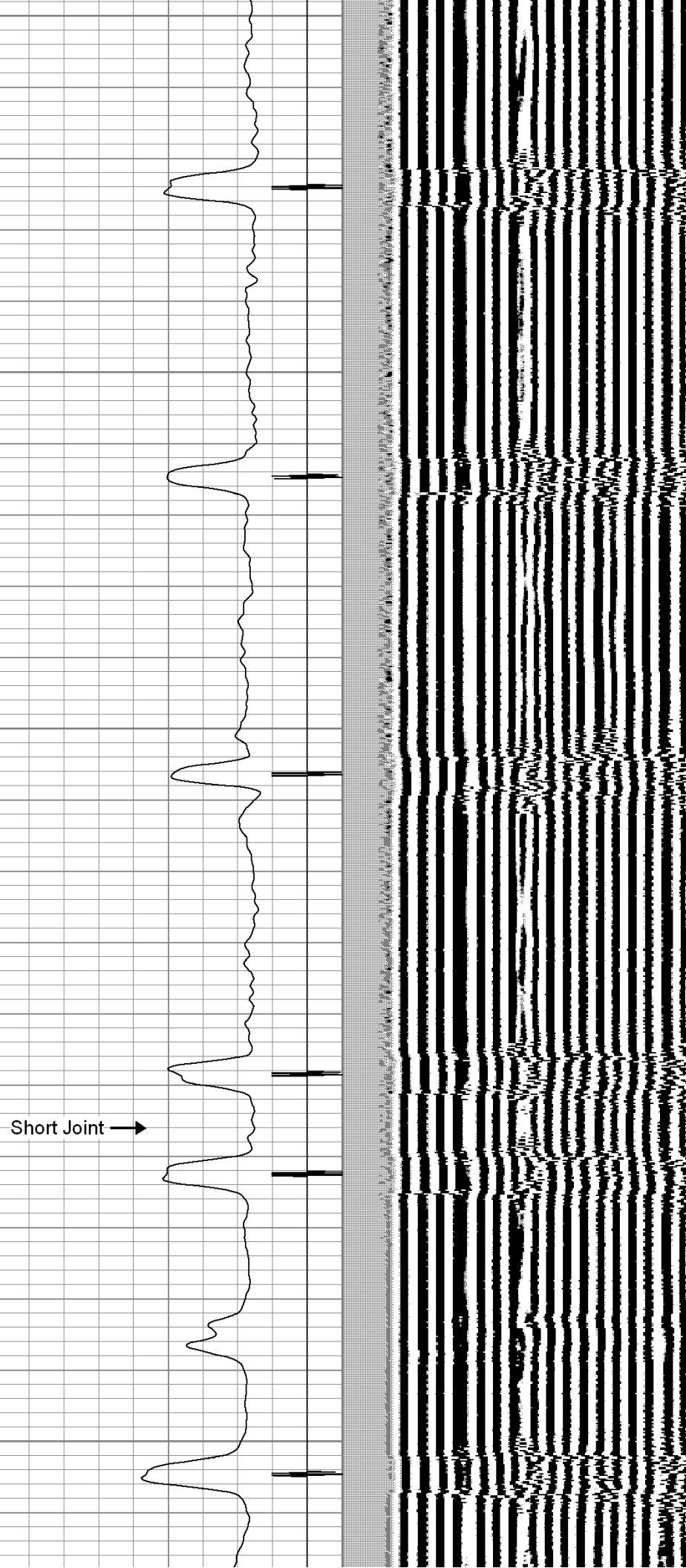
400

450

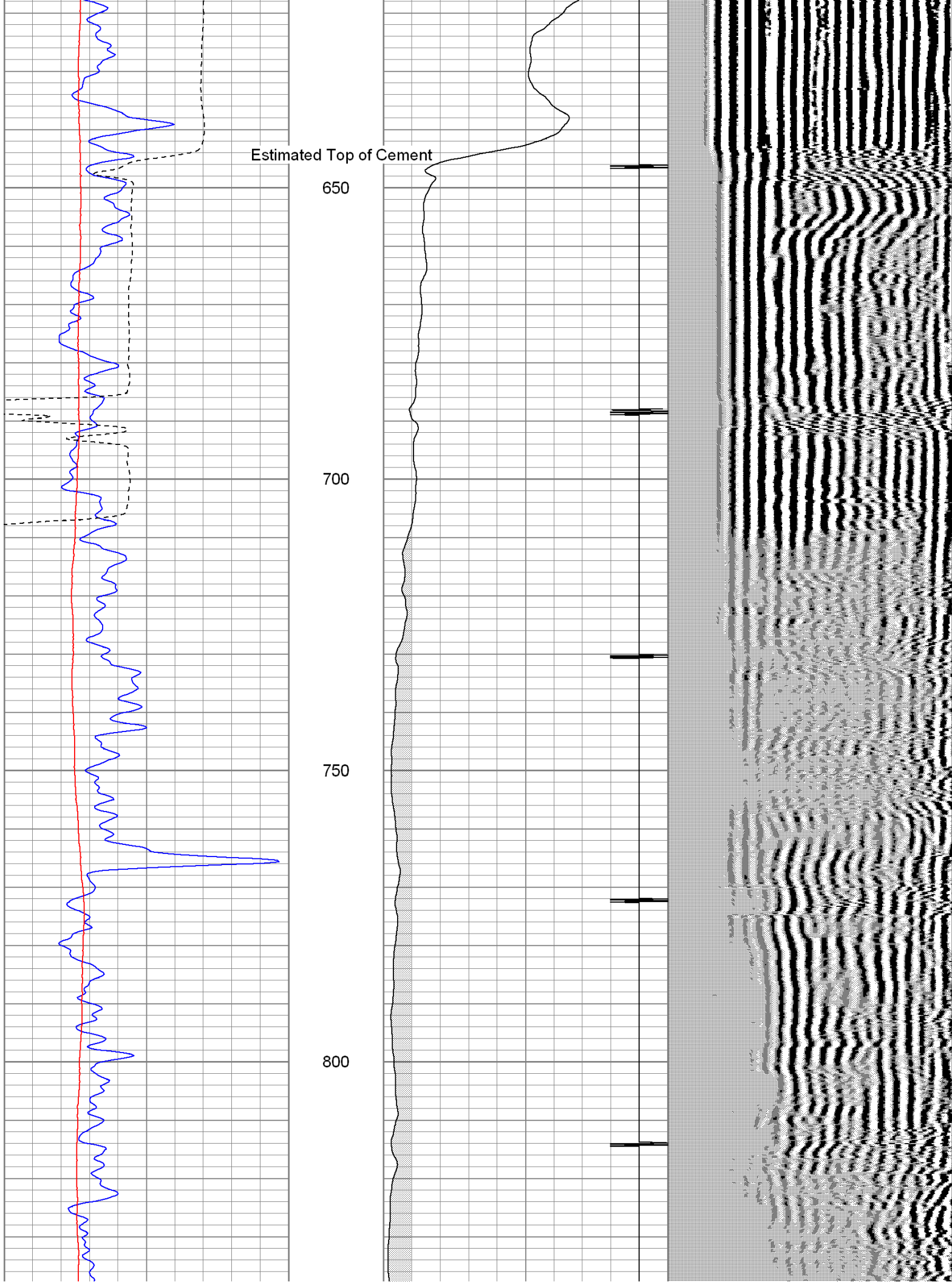
500

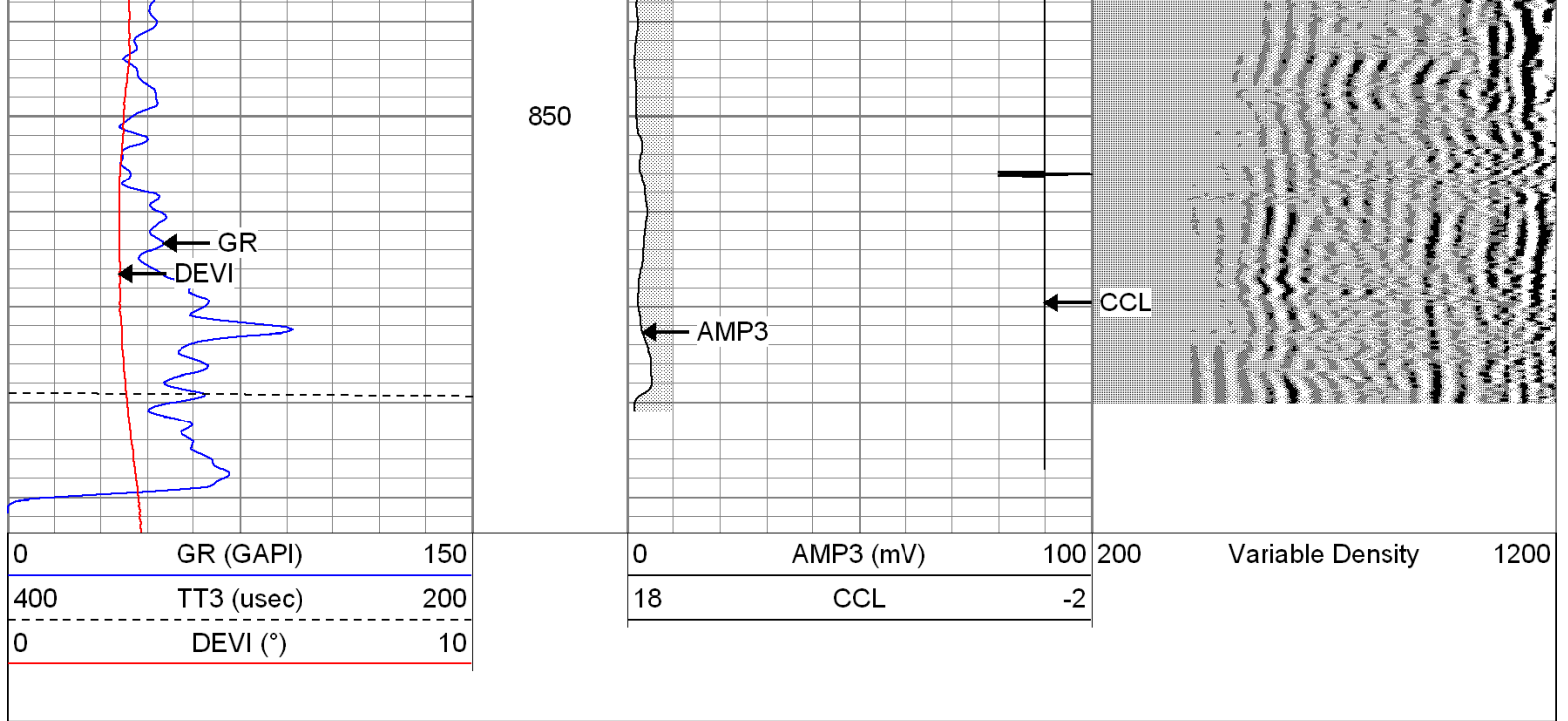
550

600



Short Joint →



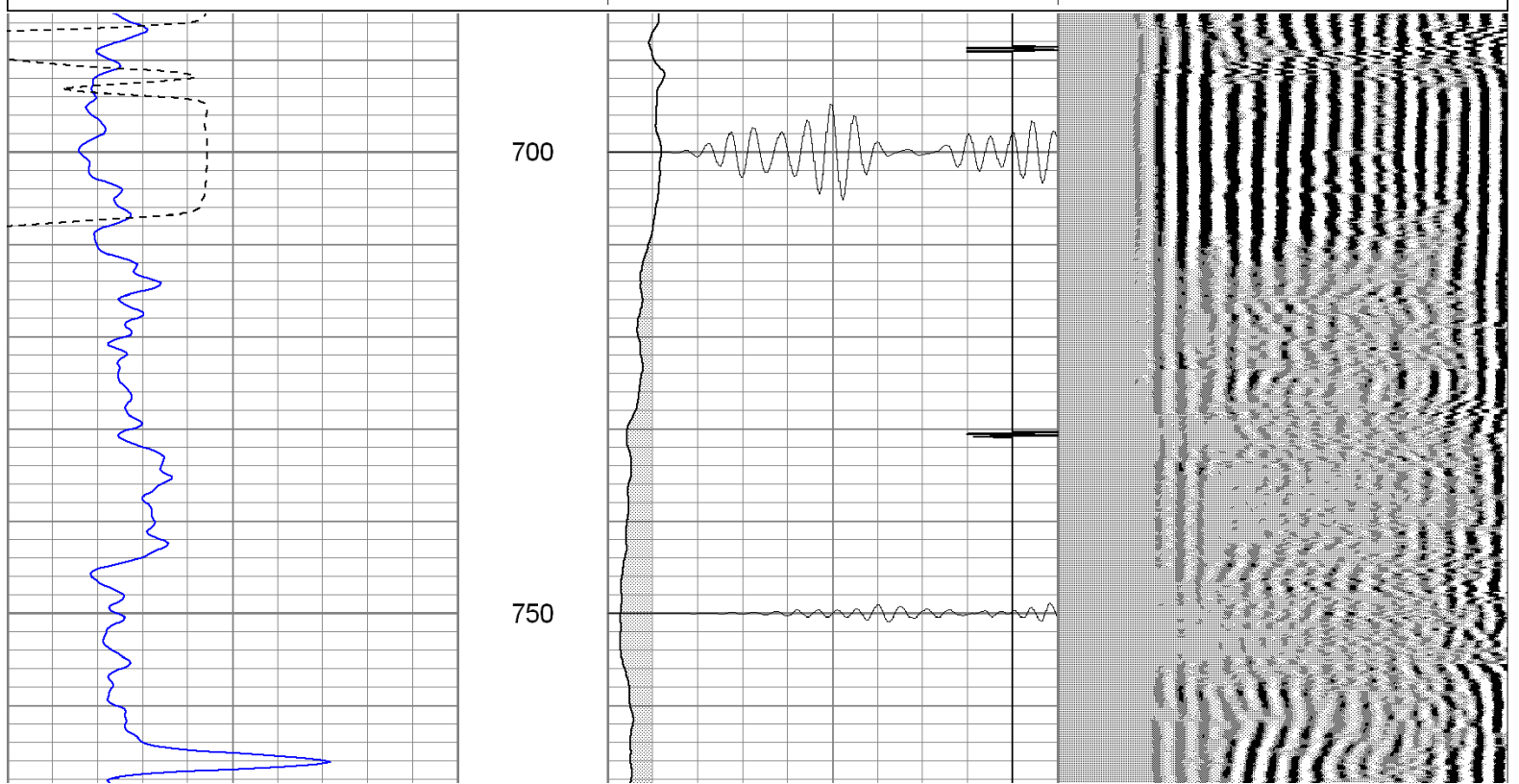


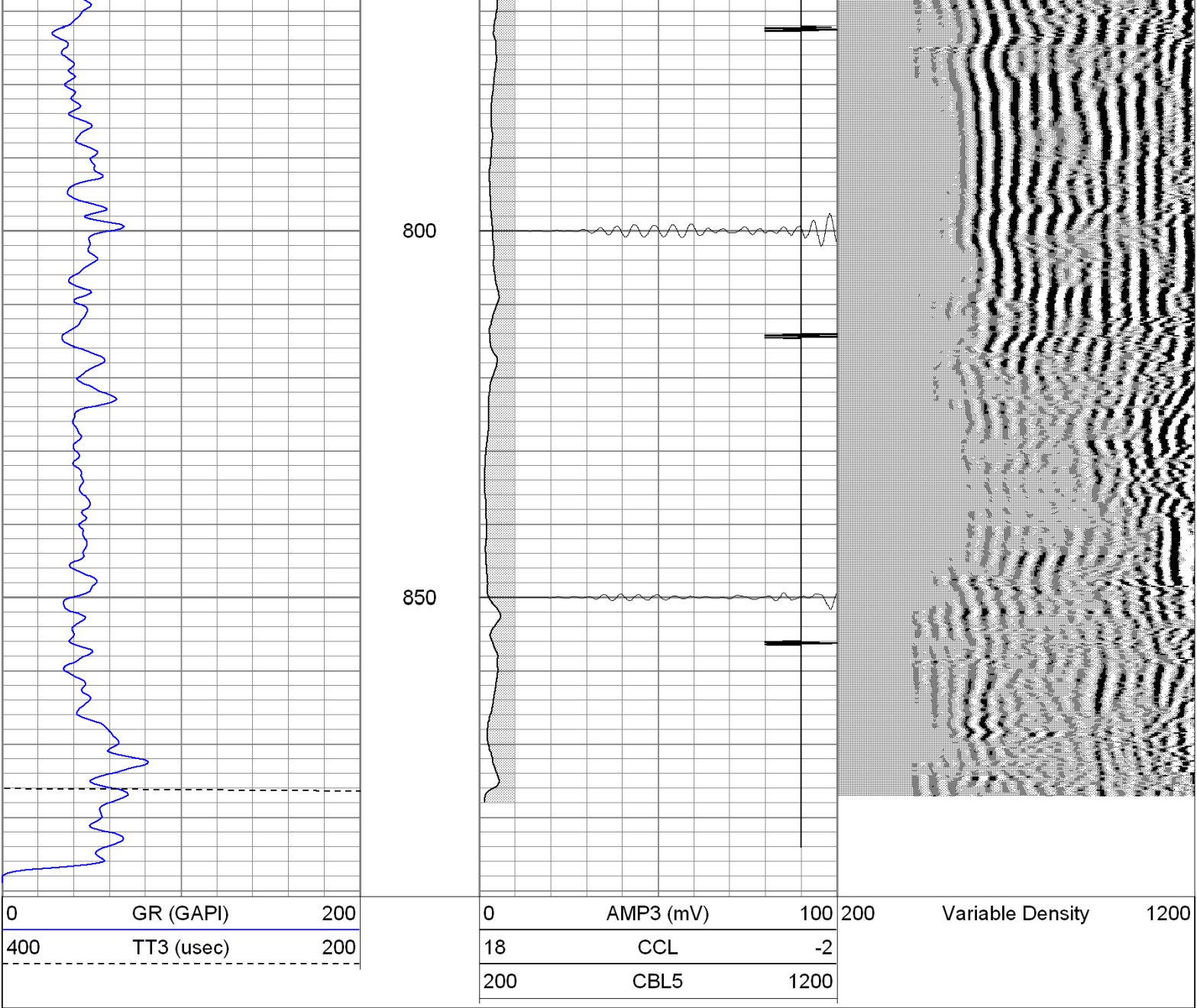
The Perforators
LLC

Repeat Pass

Database File: argon5311cbl.db
 Dataset Pathname: pass1.1
 Presentation Format: cblrt
 Dataset Creation: Tue May 03 09:09:23 2011 by Calc Open-Cased 100827
 Charted by: Depth in Feet scaled 1:240

0	GR (GAPI)	200	0	AMP3 (mV)	100	200	Variable Density	1200
400	TT3 (usec)	200	18	CCL	-2			
			200	CBL5	1200			





Calibration Report				
Database File:	argon5311cbl.db			
Dataset Pathname:	pass1			
Dataset Creation:	Tue May 03 08:38:40 2011 by Log Open-Cased 100827			
Gamma Ray Calibration Report				
Serial Number:	081014			
Tool Model:	275D_INC			
Performed:	Mon May 02 13:41:56 2011			
Calibrator Value:	200.0	GAPI		
Background Reading:	50.0	cps		
Calibrator Reading:	250.0	cps		
Sensitivity:	0.9000	GAPI/cps		
Inclinometer Calibration Report				
Performed:	Mon May 02 13:41:58 2011			
	Low Read.	High Read.	Low Ref.	High Ref.

X Accelerometer	-3589.40	3580.00	-1.00	1.00	gee
Y Accelerometer	-3673.00	3520.20	-1.00	1.00	gee
Z Accelerometer					

Cement Bond Log Calibration Report

Serial Number:	020406				
Tool Model:	P1				
Performed:	Tue May 03 08:35:42 2011				
Depth:	23.7983	ft			
Casing Diameter:	5.5	in			
	3' Spacing		5' Spacing		
Signal Zero:	1		0	mV	
Calibrated Amplitude:	85		85	mV	
Reading at Signal Zero:	-0.0125977		-0.0121338	V	
Reading in Free Pipe:	1.6		1.67864	V	
Gain:	52.0899		50.2729		
Offset:	1.65621		0.610001		

Sensor	Offset (ft)	Schematic	Description	Len (ft)	OD (in)	Wt (lb)
			None	0.75	1.50	5.00
WVF3	14.69					
WVF5	13.69		CBL-P1 (020406) Probe1	8.00	2.75	100.00
			X	3.00	1.69	25.00
CCL	6.50					
ACCX	4.83		GR-275D_INC (081014) 2-3/4" GR-CCL with Inclination	4.50	2.75	50.00
ACCY	4.83					
ACCZ	4.83					
GR	3.83		X	3.00	1.69	25.00

Dataset:	argon5311cbl.db: field/well/run1/pass1
Total Length:	19.25 ft
Total Weight:	205.00 lb
O.D.	2.75 in