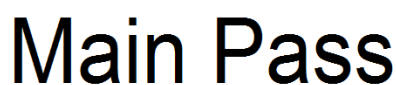




<<< Fold Here >>>
All interpretations are opinions based on inferences from electrical or other measurements and we cannot and do not guarantee the accuracy or correctness of any interpretation, and we shall not, except in the case of gross or willful negligence on our part, be liable or responsible for any loss, costs, damages, or expenses incurred or sustained by anyone resulting from any interpretation made by any of our officers, agents or employees. These interpretations are also subject to our general terms and conditions set out in our current Price Schedule.
Comments
Directions: Turn Right across from Big 4 Country Store, first right to location.

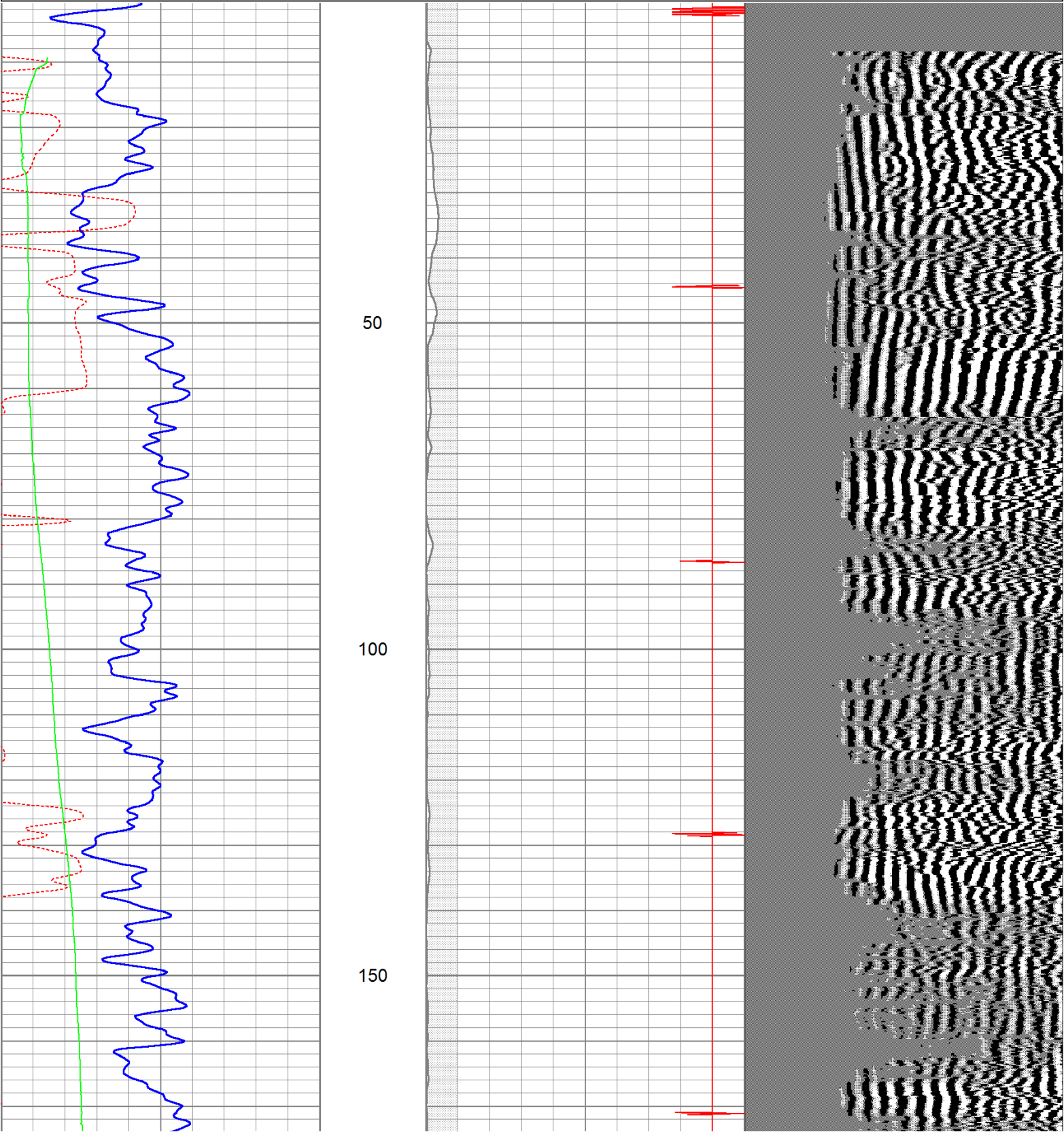


Database File: argon50911b.db  
Dataset Pathname: pass2.1  
Presentation Format: cbl  
Dataset Creation: Mon May 09 09:20:07 2011 by Calc Std Casedhole 10071  
Charted by: Depth in Feet scaled 1:240

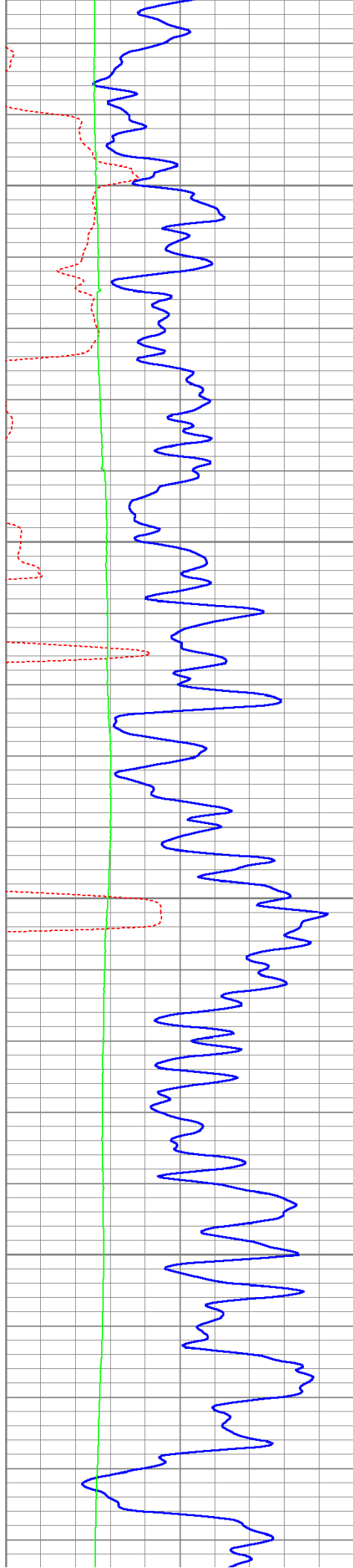
0	GR (GAPI)	200
200	GR (GAPI)	400
420	TT3FT (usec)	220
0	Devi (°)	10

18	CCL	-2
0	AMP3 (mV)	100

200 VDL 1200





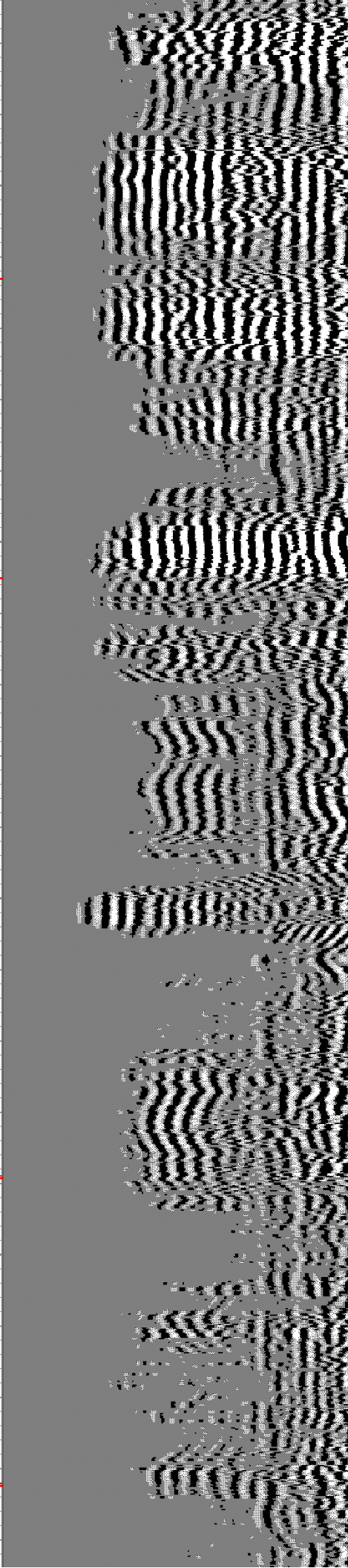
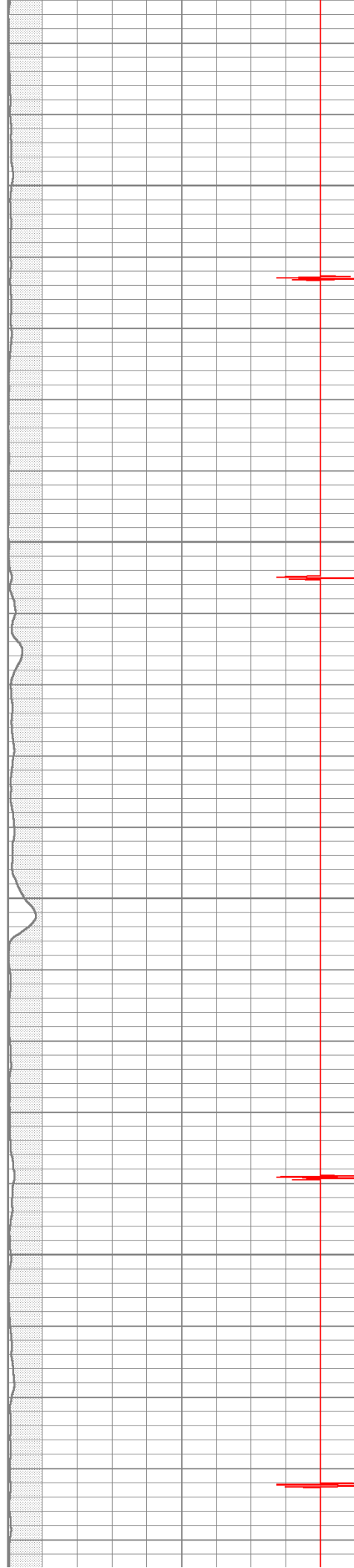


200

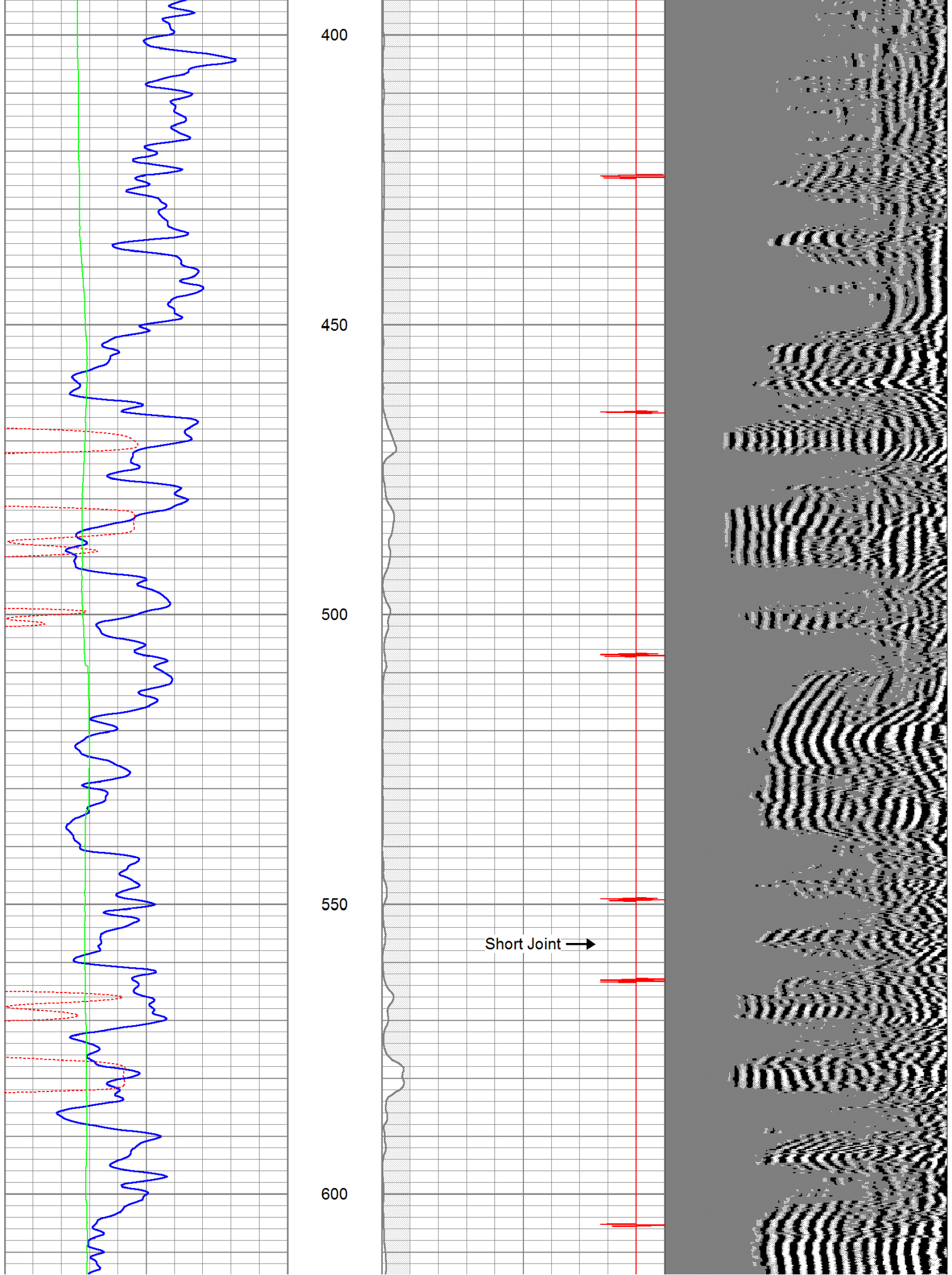
250

300

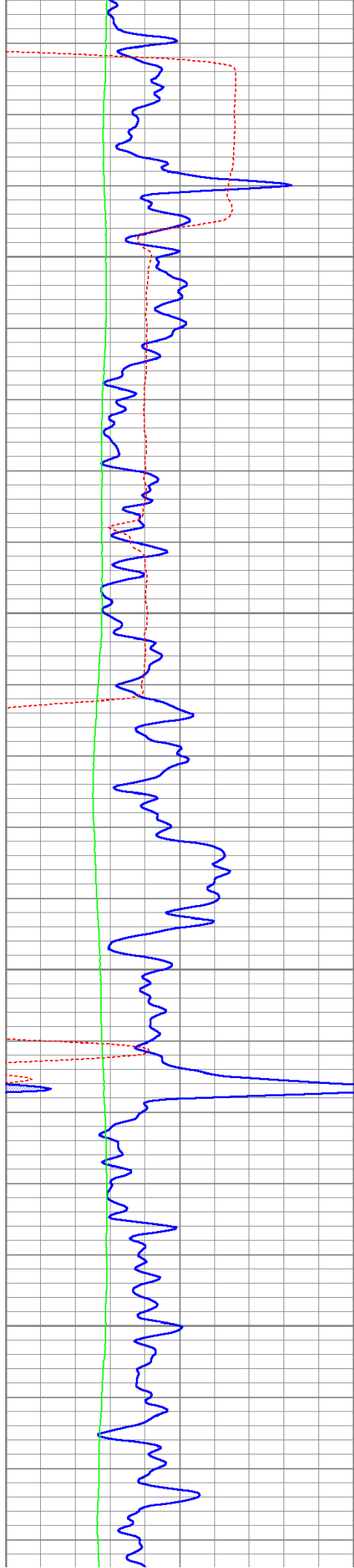
350









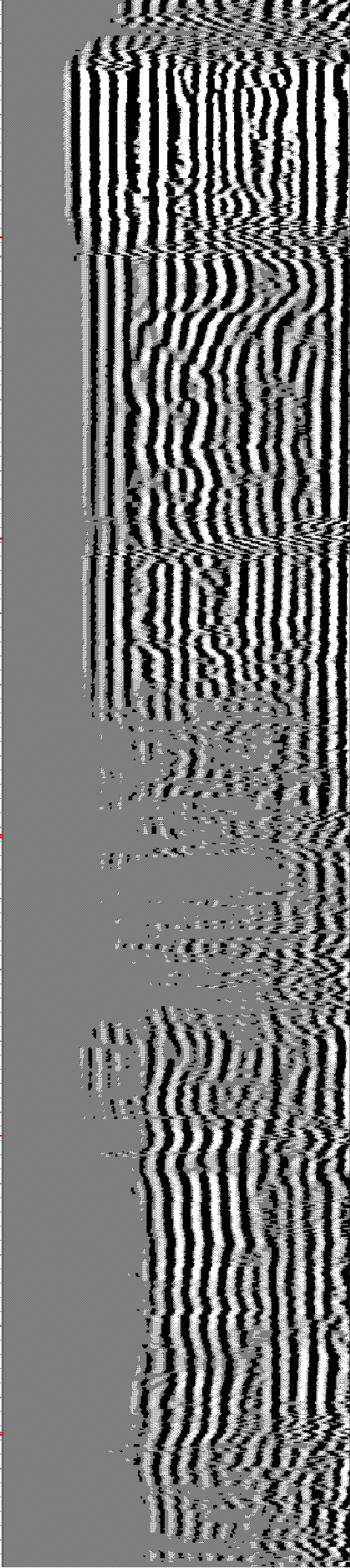
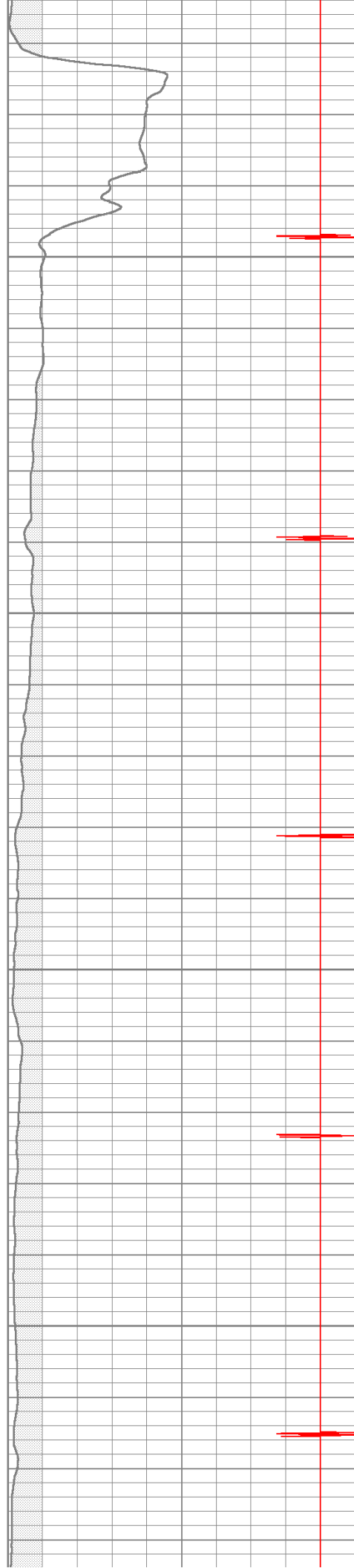


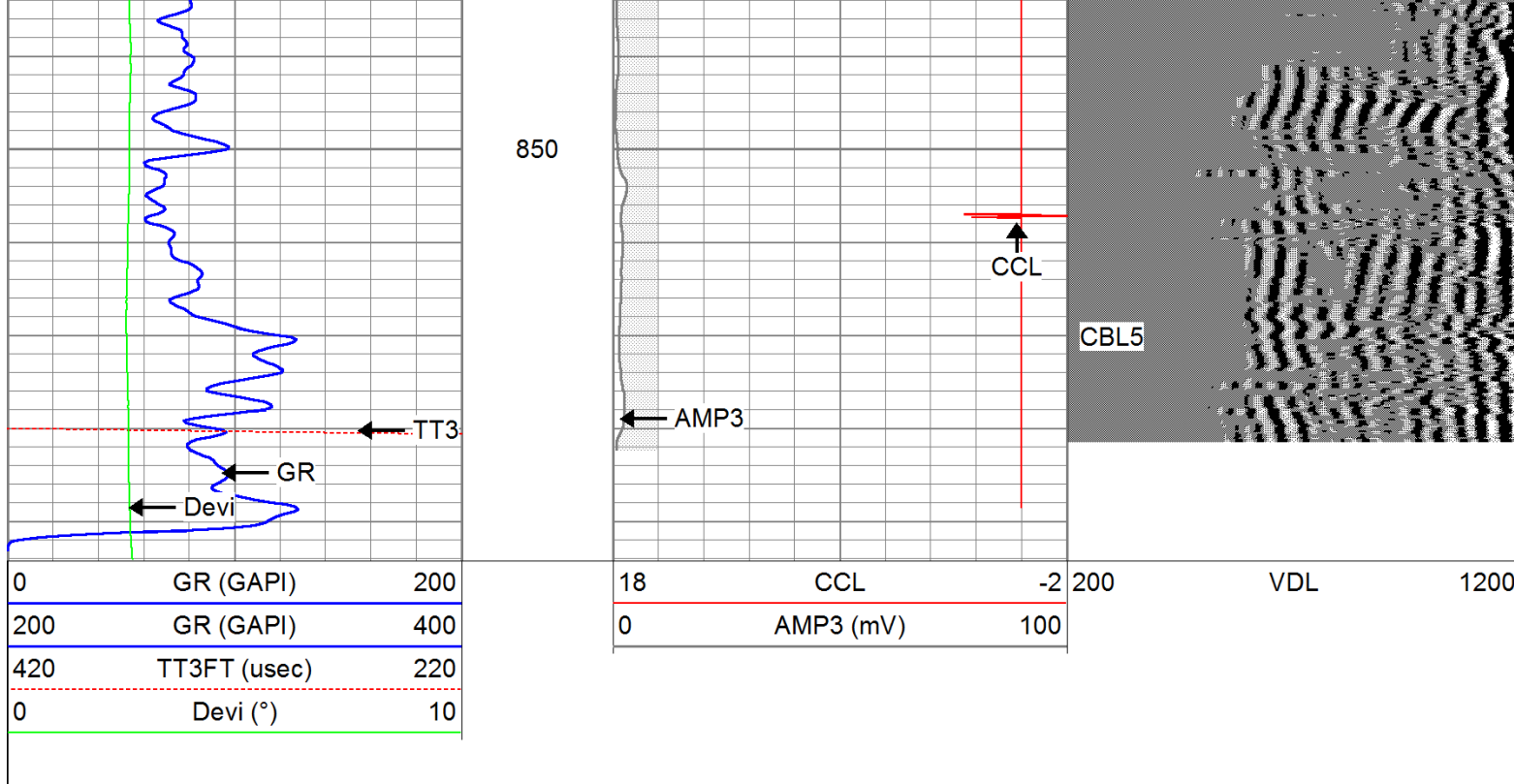
650

700

750

800

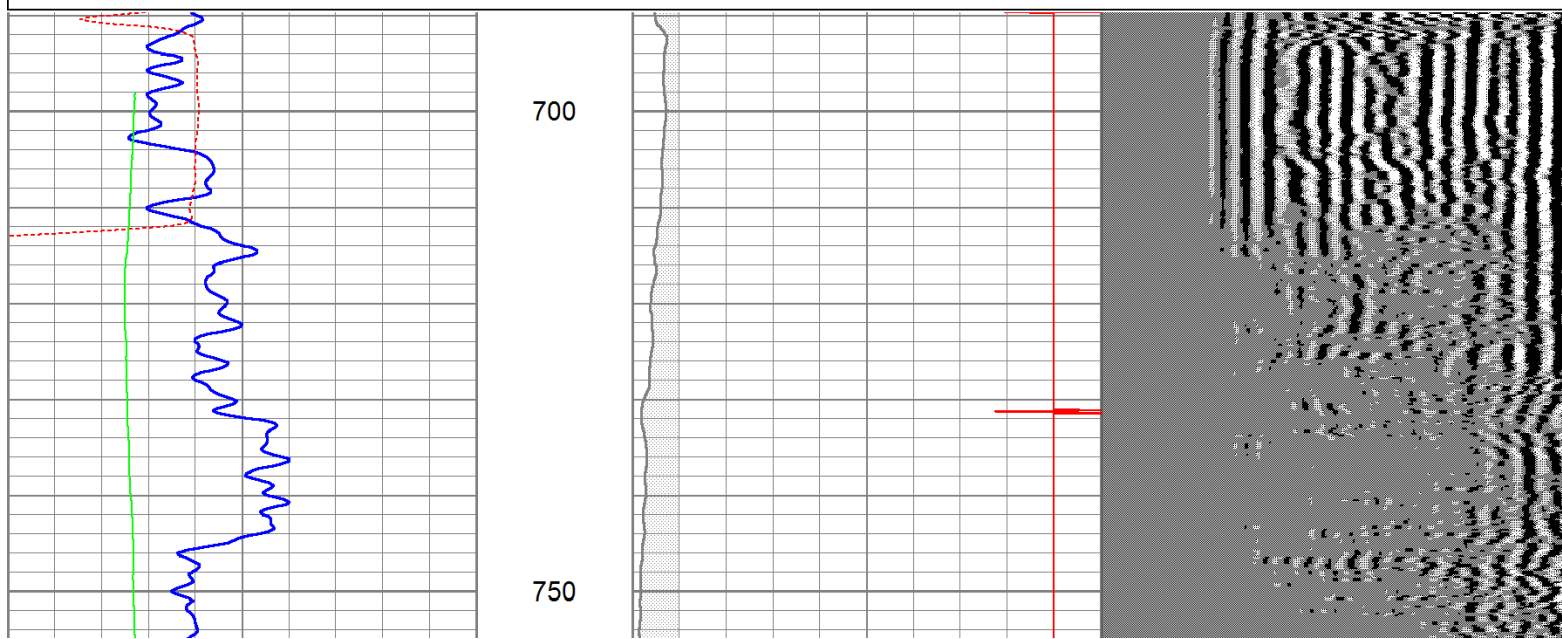




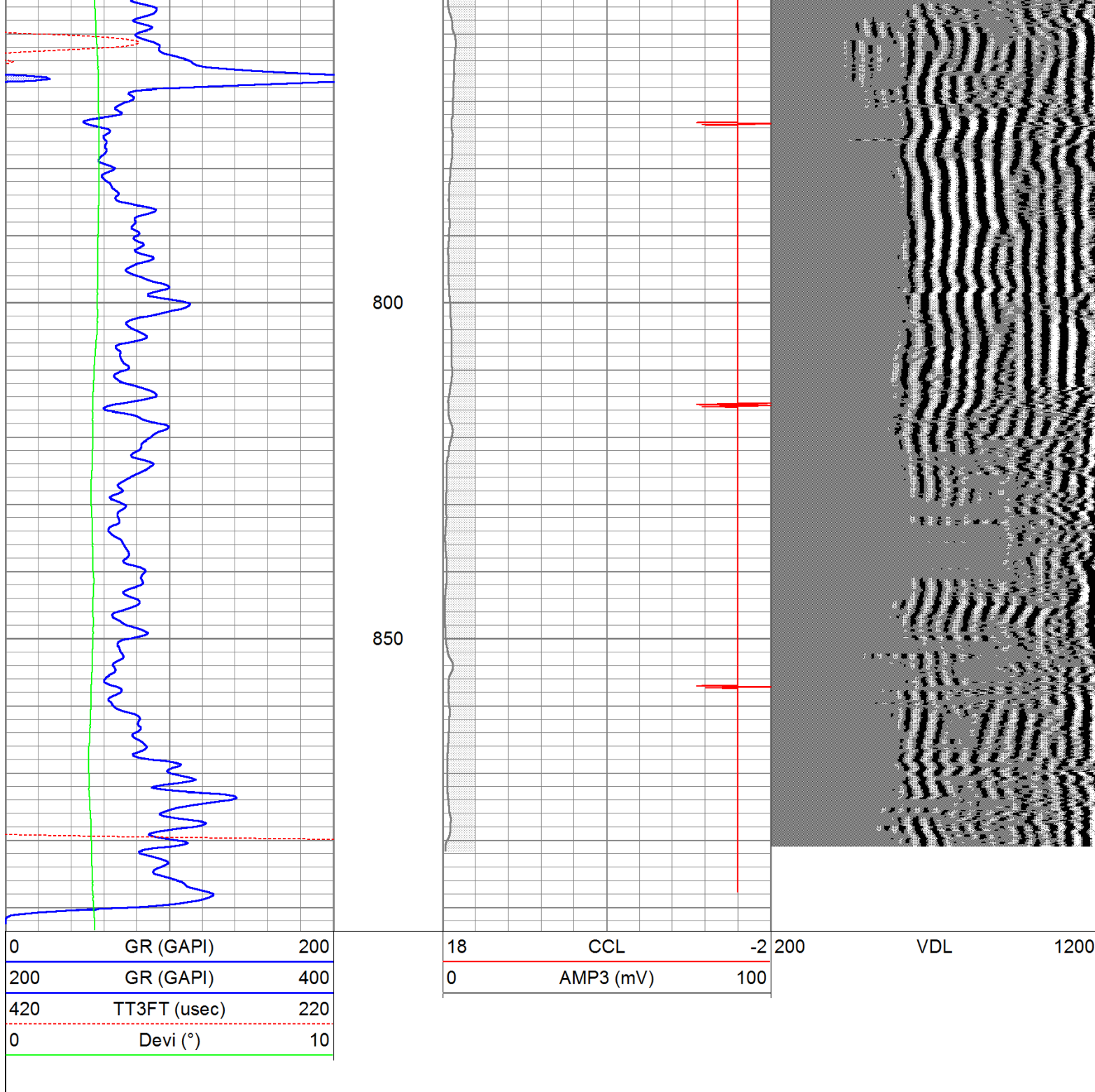
# Repeat Section

Database File: argon50911b.db  
 Dataset Pathname: pass1.1  
 Presentation Format: cbl  
 Dataset Creation: Mon May 09 09:21:45 2011 by Calc Std Casedhole 10071  
 Charted by: Depth in Feet scaled 1:240

0	GR (GAPI)	200	18	CCL	-2	200	VDL	1200
200	GR (GAPI)	400	0	AMP3 (mV)	100			
420	TT3FT (usec)	220						
0	Devi (°)	10						







### Calibration Report

Database File: argon50911b.db  
Dataset Pathname: pass1  
Dataset Creation: Mon May 09 08:52:32 2011 by Log Std Casedhole 10071

### Gamma Ray Calibration Report

Serial Number: 081014  
Tool Model: 275D\_INC  
Performed: Sat May 07 15:42:04 2011

Calibrator Value: 200.0 GAPI

Background Reading: 50.0 cps  
Calibrator Reading: 250.0 cps

Sensitivity: 1.0000 GAPI/cps

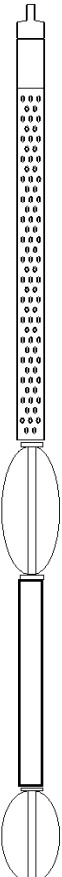
### Inclinometer Calibration Report

Performed: Tue Apr 07 11:45:01 2009

	Low Read.	High Read.	Low Ref.	High Ref.	
X Accelerometer	-3589.40	3580.00	-1.00	1.00	gee
Y Accelerometer	-3673.00	3520.20	-1.00	1.00	gee
Z Accelerometer					

### Cement Bond Log Calibration Report

Serial Number:	081024				
Tool Model:	PROBEDIGITALCBL				
Performed:	Sat Feb 12 09:42:04 2011				
Depth:	321.315	ft			
Casing Diameter:	5.5	in			
	3' Spacing		5' Spacing		
Signal Zero:	0		0		mV
Calibrated Amplitude:	71.921		71.921		mV
Reading at Signal Zero:	-0.0146484		-0.0134766		V
Reading in Free Pipe:	1.66746		1.60659		V
Gain:	42.7566		44.3938		
Offset:	0.626317		0.598276		

Sensor	Offset (ft)	Schematic	Description	Len (ft)	OD (in)	Wt (lb)
			CHD-None (0)	0.75	1.50	5.00
WVF3	13.86		CBLPROBE-PROBEDIGITALCBL (081024)	8.75	2.75	106.50
WVF5	12.86		PROBE DIGITAL CBL			
			CENT-X (1)	3.00	1.69	25.00
CCL	5.61		GR-275D_INC (081014)	4.50	2.75	50.00
ACCX	3.94		2-3/4" GR-CCL with Inclination			
ACCY	3.94					
ACCZ	3.94					
GR	2.94		CENT-A (ARTEX325S)	2.11	3.25	20.00
			CENTRALICER WITHOUT GAMMA RAY FOR ARTEX3.25S TOOL			



Dataset:	argon50911b.db: field/well/run1/pass1
Total Length:	19.11 ft
Total Weight:	206.50 lb
O.D.	3.25 in