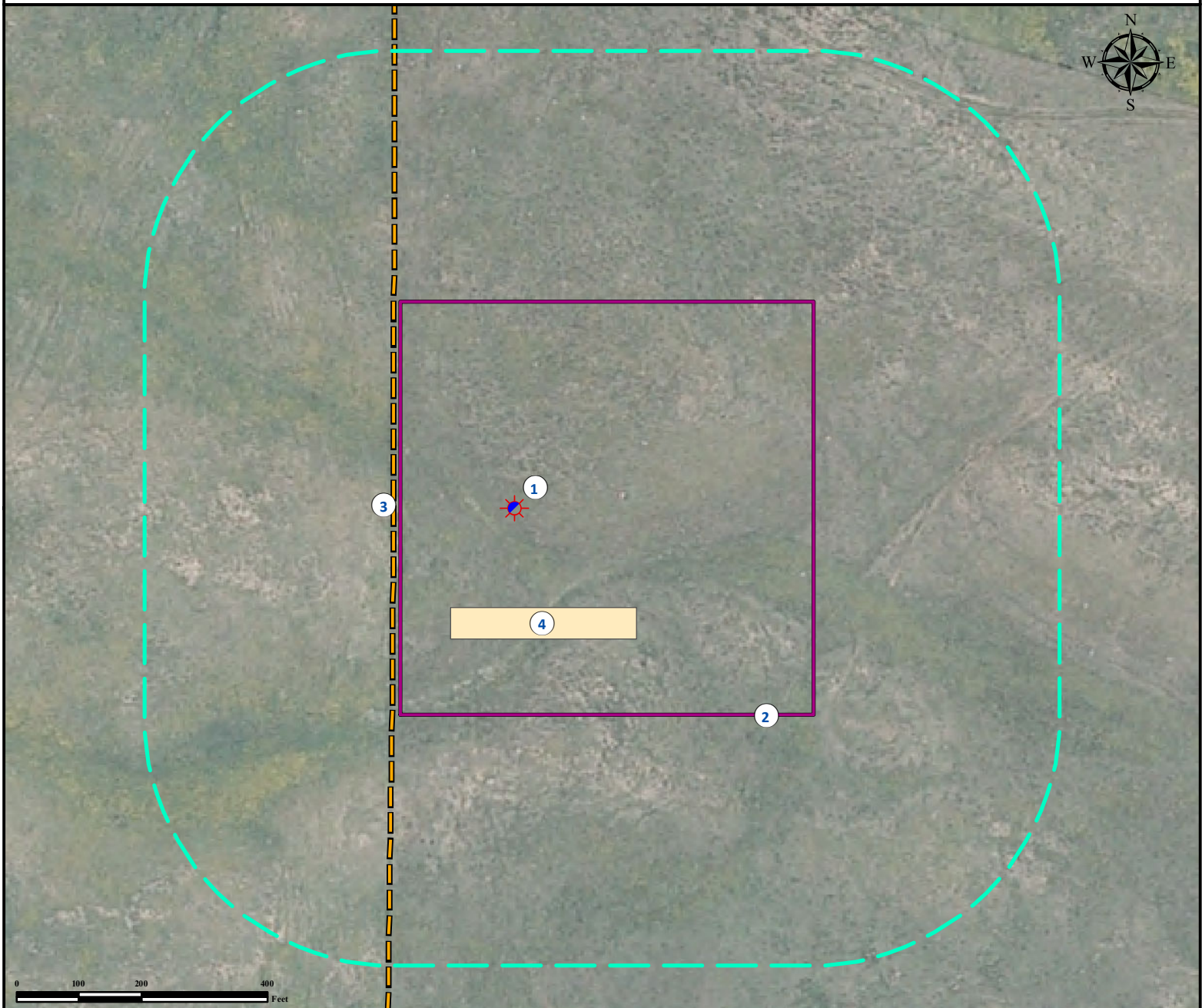


# Location Drawing

## TRUE 12-65-21-12H

NW¼ SW¼ SECTION 21, TOWNSHIP 12 NORTH, RANGE 65 WEST OF THE 6TH PRINCIPAL MERIDIAN



- |                                     |  |
|-------------------------------------|--|
| 1. Proposed Well TRUE 12-65-21-12H. | 4. Proposed Facility is to be ±150' S. |
| 2. Operational Disturbance Area.    |  |
| 3. Fence is ±192' W.                |  |

### Legend

- |               |                  |                   |
|---------------|------------------|-------------------|
| Proposed Well | Disturbance Area | Proposed Facility |
| Fence         | 400' Radius      |                   |

### Reference Location

\*\* All Measurements are Made from  
Reference Well TRUE 12-65-21-12H\*\*  
Lat: 40.991789° Long:-104.675321° (NAD83)  
Elevation: 5902 Feet

Surface Use: Rangeland



*Use our resources to find yours!*  
[www.petro-fs.com](http://www.petro-fs.com)  
(303) 928-7128

Field Date: 10/22/2010  
Drafting Date: 05/17/2011  
Drafter: ABD  
Checked By: BHF

Data Sources:  
- Aerial courtesy of NAIP (2009)

Prepared for: **Anadarko**  
Petroleum Corporation  
**ANADARKO E&P CO., L.P.**