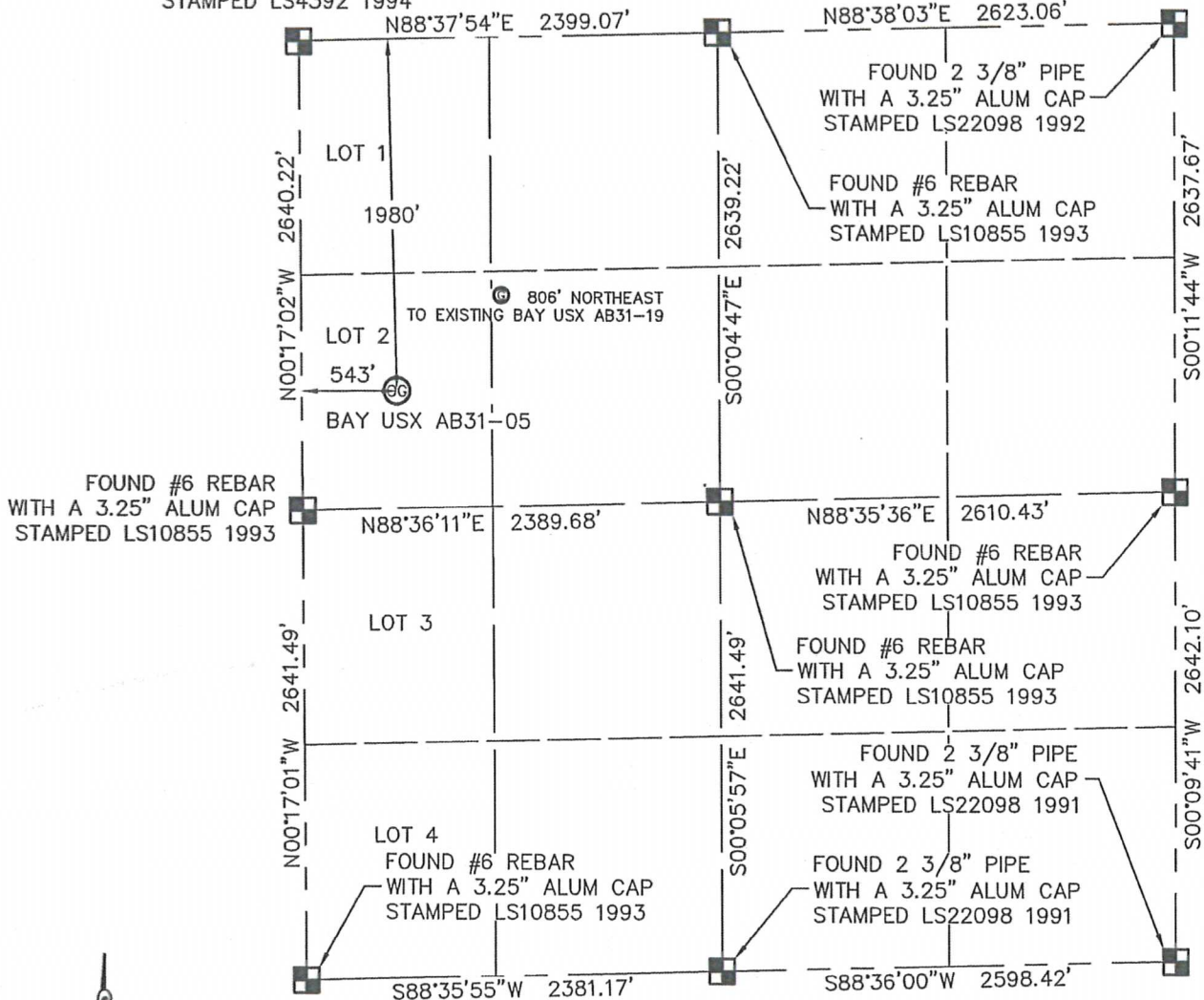


WELL LOCATION CERTIFICATE

BAY USX AB31-05

THIS MAP DOES NOT REPRESENT A BOUNDARY SURVEY

SECTION: 31
TOWNSHIP: 7N
RANGE: 64WFOUND #6 REBAR
WITH A 3.25" ALUM CAP
STAMPED LS4392 1994

In accordance with a request from MATT CAMPBELL with NOBLE ENERGY INC. King Surveyors Inc. has determined the surface location of the BAY USX AB31-05 to be 1980' from the NORTH line and 543' from the WEST line, as measured at right angles, from the section lines of Section 31, Township 7 North, Range 64 West of the Sixth Principal Meridian, County of Weld, State of Colorado.

I hereby state that this Well Location Certificate was prepared by me, or under my direct supervision, that the fieldwork was completed on 6-03-2011, for and on behalf of NOBLE ENERGY INC. That this is not a Land Survey Plat or an Improvement Survey Plat, and that it is not to be relied upon for establishment of fence, building, or other future improvement lines.

NOTE:

- 1) Bearings shown are Grid Bearings of the Colorado State Plane Coordinate System, North Zone, North American Datum 1983/2007. The lineal dimensions as contained herein are based upon the "U.S. Survey Foot."
- 2) Ground elevations are based on an observed GPS elevation (NAVD 1988 DATUM).
- 3) NEAREST EXISTING WELL: BAY USX AB31-19, 806' NORTHEAST
- 4) IMPROVEMENTS: See LOCATION DRAWING exhibit for all visible improvements within 400' of disturbed area.
- 5) SURFACE USE: CROP FIELD
- 6) FIELD OPERATOR: BEN ADSIT

SURFACE LOCATION

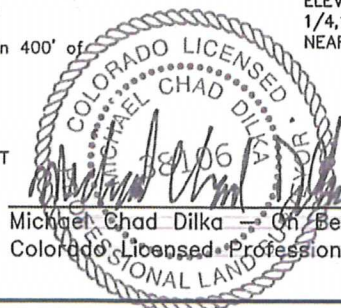
LATITUDE: 40.53118°N
LONGITUDE: 104.59952°W
PDOP: 3.5
ELEV: 4817'
1/4, 1/4: SW1/4 NW1/4
NEAREST PROPERTY LINE: 485' SOUTHWEST

NOTE

According to Colorado law, you must commence any legal action based upon any defect in this W.L.C. within three years after you discover such defect. In no event, may any action based upon any defect in this survey be commenced more than ten years after the date of the certificate shown hereon. (13-80-105 C.R.S.)

LEGEND

- = FOUND ALIQUOT MONUMENT AS DESCRIBED
- = CALCULATED POSITION
- = SET ALIQUOT MONUMENT AS DESCRIBED

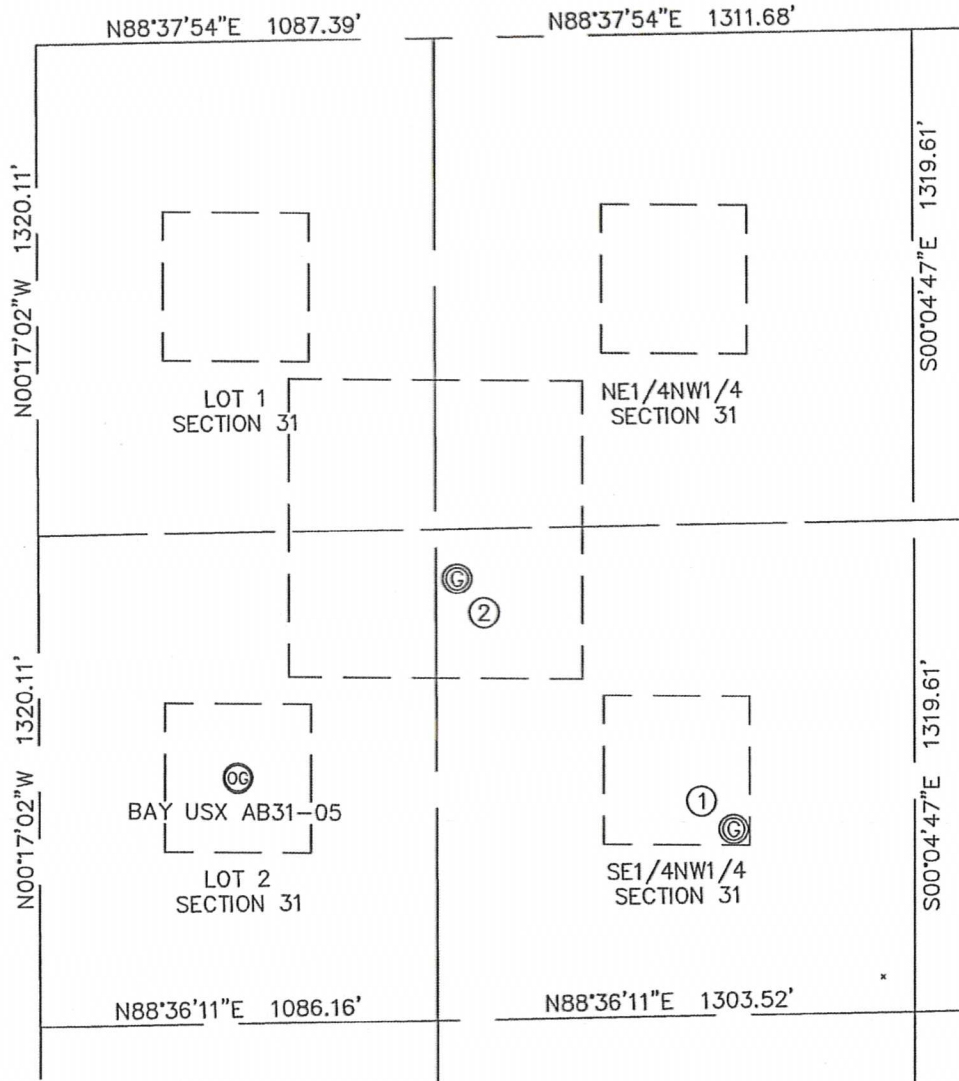


Michael Chad Dilka - On Behalf Of King Surveyors, Inc.
Colorado Licensed Professional Land Surveyor #38106

PROJECT#: 2011028

SITE SKETCH
BAY USX AB31-05

SECTION: 31
TOWNSHIP: 7N
RANGE: 64W



①

BAY USX AB31-6
SE1/4 NW1/4
2140' FNL
1897' FWL
LAT-40.53079°N
LONG-104.59465°W
PDOP: 1.3
ELEV: 4811'

②

BAY USX AB31-19
SE1/4 NW1/4
1454' FNL
1144' FWL
LAT-40.53265°N
LONG-104.59735°W
PDOP: 1.8
ELEV: 4820'

