

1989 Private Alum. Cap  
0.4' Above Ground  
LS #7242  
Lat: 40.334103°  
Long: 104.320942°

T4N, R62W, 6th P.M.

EOG RESOURCES, INC.

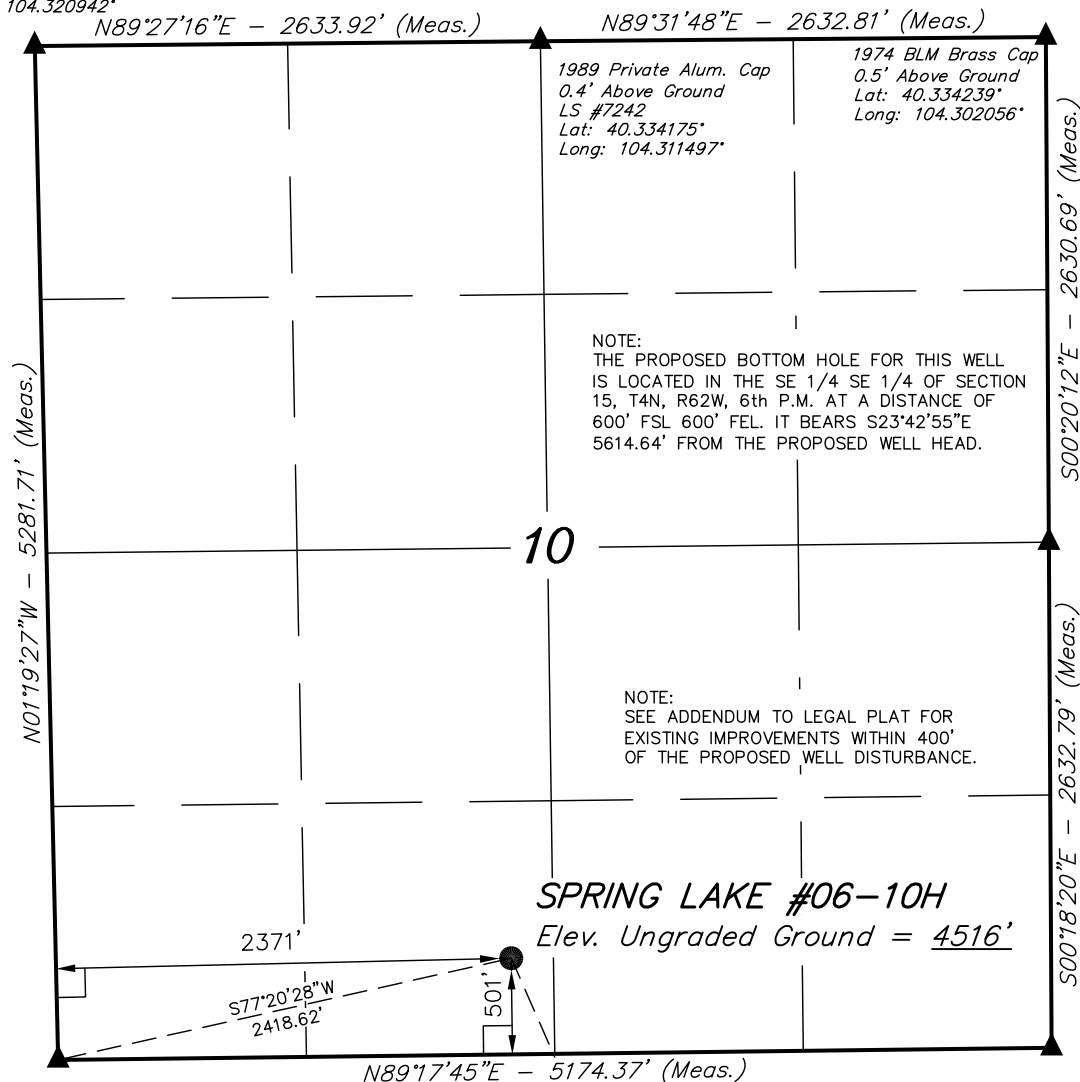
Well location, SPRING LAKE #06-10H (SURFACE LOCATION), located as shown in the SE 1/4 SW 1/4 of Section 10, T4N, R62W, 6th P.M. Weld County, Colorado.

### BASIS OF ELEVATION

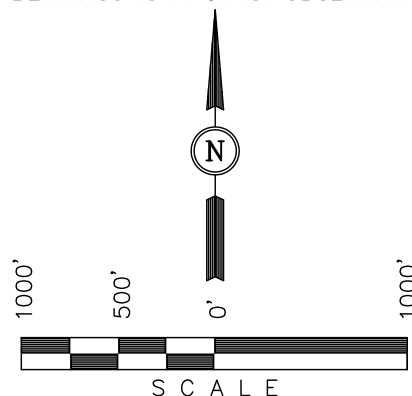
SPOT ELEVATION LOCATED AT THE NORTHEAST CORNER OF SECTION 24, T5N, R62W, 6th P.M. TAKEN FROM THE POINT OF ROCKS, QUADRANGLE, COLORADO, WELD COUNTY, 7.5 MINUTE QUAD (TOPOGRAPHIC MAP) PUBLISHED BY THE UNITED STATES DEPARTMENT OF THE INTERIOR, GEOLOGICAL SURVEY. SAID ELEVATION IS MARKED AS BEING 4530 FEET.

### BASIS OF BEARINGS

BASIS OF BEARINGS IS A G.P.S. OBSERVATION.



1974 BLM Brass Cap  
0.5' Above Ground  
Lat: 40.327019°  
Long: 104.301997°



### CERTIFICATE

THIS IS TO CERTIFY THAT THE ABOVE PLAT WAS PREPARED FROM FIELD NOTES OF ACTUAL SURVEYS MADE BY ME OR UNDER MY SUPERVISION AND THAT THE SAME ARE TRUE AND CORRECT TO THE BEST OF MY KNOWLEDGE AND BELIEF.

1974 BLM Brass Cap  
0.2' Above Ground  
Lat: 40.319794°  
Long: 104.301942°

REGISTERED LAND SURVEYOR  
REGISTRATION NO. 17492  
STATE OF COLORADO

REVISED: 06-15-11

**UINTAH ENGINEERING & LAND SURVEYING**  
85 SOUTH 200 EAST - VERNAL, UTAH 84078  
(435) 789-1017

PDOP = 2.8

#### NAD 83 (SURFACE LOCATION)

LATITUDE = 40°19'15.86" (40.321072)  
LONGITUDE = 104°18'43.32" (104.312033)

#### NAD 27 (SURFACE LOCATION)

LATITUDE = 40°19'15.93" (40.321092)  
LONGITUDE = 104°18'41.49" (104.311525)

#### STATE PLANE NAD 83

N: 1362026.29 E: 3331236.31

#### STATE PLANE NAD 27

N: 362028.62 E: 2331386.50

SCALE  
1" = 1000'

DATE SURVEYED:  
05-06-11

DATE DRAWN:  
05-19-11

PARTY  
L.S. A.G. S.R.L.

REFERENCES  
G.L.O. PLAT

WEATHER  
WARM

FILE  
EOG RESOURCES, INC.

### LEGEND:

└─┘ = 90° SYMBOL

● = PROPOSED WELL HEAD.

▲ = SECTION CORNERS LOCATED.

T4N, R62W, 6th P.M.

EOG RESOURCES, INC.

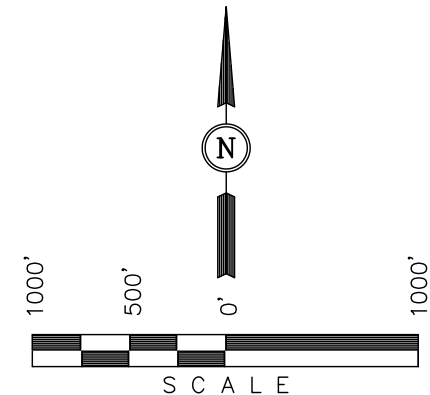
Well location, SPRING LAKE #06-10H (TARGET BOTTOM HOLE), located as shown in the SE 1/4 SW 1/4 of Section 10, T4N, R62W, 6th P.M. Weld County, Colorado.

### BASIS OF ELEVATION

SPOT ELEVATION LOCATED AT THE NORTHEAST CORNER OF SECTION 24, T5N, R62W, 6th P.M. TAKEN FROM THE POINT OF ROCKS, QUADRANGLE, COLORADO, WELD COUNTY, 7.5 MINUTE QUAD (TOPOGRAPHIC MAP) PUBLISHED BY THE UNITED STATES DEPARTMENT OF THE INTERIOR, GEOLOGICAL SURVEY. SAID ELEVATION IS MARKED AS BEING 4530 FEET.

### BASIS OF BEARINGS

BASIS OF BEARINGS IS A G.P.S. OBSERVATION.



### CERTIFICATE

THIS IS TO CERTIFY THAT THE ABOVE PLAT WAS PREPARED FROM FIELD NOTES OF ACTUAL SURVEYS MADE BY ME OR UNDER MY SUPERVISION AND THAT THE SAME ARE TRUE AND CORRECT TO THE BEST OF MY KNOWLEDGE AND BELIEF.

*[Signature]*  
17492  
REGISTERED LAND SURVEYOR  
REGISTRATION NO. 17492  
STATE OF COLORADO  
06-15-11

REVISED: 06-15-11

**UINTAH ENGINEERING & LAND SURVEYING**  
85 SOUTH 200 EAST - VERNAL, UTAH 84078  
(435) 789-1017

PDOP = 2.8

**NAD 83 (TARGET BOTTOM HOLE)**  
LATITUDE = 40°18'25.08" (40.306967)  
LONGITUDE = 104°18'14.14" (104.303928)  
**NAD 27 (TARGET BOTTOM HOLE)**  
LATITUDE = 40°18'25.15" (40.306986)  
LONGITUDE = 104°18'12.31" (104.303419)  
**STATE PLANE NAD 83**  
N: 1356918.62 E: 3333565.52  
**STATE PLANE NAD 27**  
N: 356921.09 E: 2333715.77

SCALE 1" = 1000'	DATE SURVEYED: 05-06-11	DATE DRAWN: 05-19-11
PARTY L.S. A.G. S.R.L.	REFERENCES G.L.O. PLAT	
WEATHER WARM	FILE EOG RESOURCES, INC.	

### LEGEND:

- └─┘ = 90° SYMBOL
- = PROPOSED WELL HEAD.
- ▲ = SECTION CORNERS LOCATED.

