

Well Name: **Badding 39-26**

Surface Location: Badding 20-26 Pad Sec.26-T2N-R66W
 North American Datum 1983 US State Plane 1983 Colorado Northern Zone

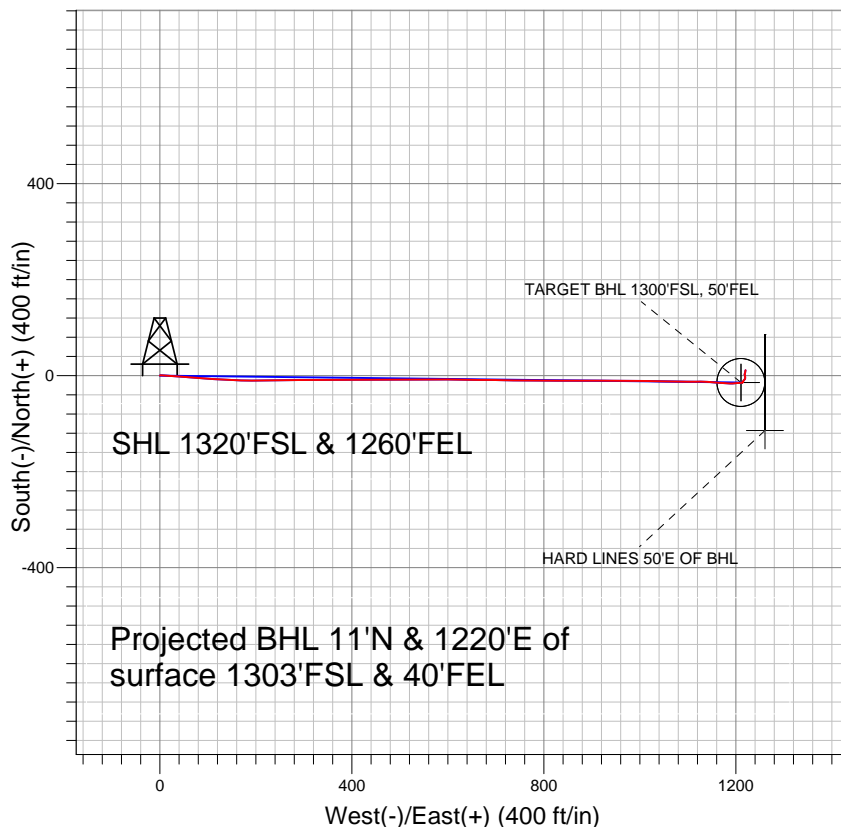
Ground Elevation: 5087.0

+N/-S	+E/-W	Northing	Easting	Latitude	Longitude
0.0	0.0	1282247.93	3212756.00	40.105658	-104.739386

Original Well Elev WELL @ 5101.0ft (Original Well Elev)

Slot

Anadarko, Weld County CO



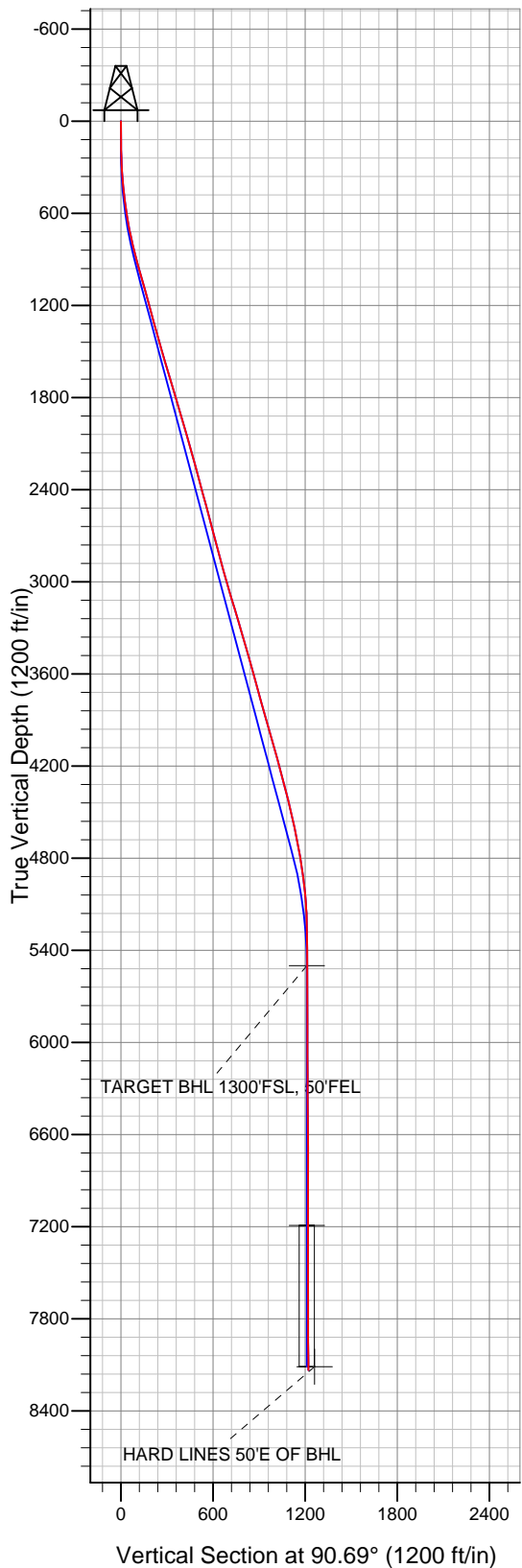
LEGEND

- + Badding 39-26, Wellbore #1, Plan #1 (3-18-11) V0
- + Wellbore #1
- Survey #1

Final Survey Plot

Projected Final Survey -
 8290'MD & 8134'TVD @ 1220'VS
 0.7 deg Inc 6.0 deg AZ

Project: SEC.26-T2N-R66W
 Site: Badding 20-26 Pad Sec.26-T2N-R66W
 Well: Badding 39-26
 Plan: Wellbore #1





Anadarko, Weld County CO

SEC.26-T2N-R66W

Badding 20-26 Pad Sec.26-T2N-R66W

Badding 39-26

Wellbore #1

Survey: Survey #1

Standard Survey Report

18 April, 2011



Company:	Anadarko, Weld County CO	Local Co-ordinate Reference:	Well Badding 39-26
Project:	SEC.26-T2N-R66W	TVD Reference:	WELL @ 5101.0ft (Original Well Elev)
Site:	Badding 20-26 Pad Sec.26-T2N-R66W	MD Reference:	WELL @ 5101.0ft (Original Well Elev)
Well:	Badding 39-26	North Reference:	True
Wellbore:	Wellbore #1	Survey Calculation Method:	Minimum Curvature
Design:	Wellbore #1	Database:	Landmark

Survey

Measured Depth (ft)	Inclination (°)	Azimuth (°)	Vertical Depth (ft)	+N/-S (ft)	+E/-W (ft)	Vertical Section (ft)	Dogleg Rate (°/100ft)	Build Rate (°/100ft)	Turn Rate (°/100ft)
1,160.0	15.40	91.90	1,141.8	-10.2	168.2	168.3	0.86	-0.68	-1.92
1,249.0	14.90	90.20	1,227.7	-10.6	191.5	191.6	0.75	-0.56	-1.91
1,338.0	15.20	88.20	1,313.7	-10.3	214.6	214.7	0.67	0.34	-2.25
1,426.0	16.00	88.70	1,398.4	-9.7	238.2	238.3	0.92	0.91	0.57
1,515.0	15.90	89.60	1,484.0	-9.3	262.7	262.8	0.30	-0.11	1.01
1,604.0	16.00	89.70	1,569.6	-9.2	287.1	287.2	0.12	0.11	0.11
1,692.0	16.60	90.80	1,654.0	-9.3	311.8	311.9	0.77	0.68	1.25
1,781.0	17.10	90.50	1,739.2	-9.6	337.6	337.7	0.57	0.56	-0.34
1,870.0	16.80	89.90	1,824.4	-9.7	363.6	363.7	0.39	-0.34	-0.67
1,958.0	16.60	88.40	1,908.6	-9.3	388.8	388.9	0.54	-0.23	-1.70
2,047.0	16.30	89.10	1,994.0	-8.7	414.0	414.1	0.40	-0.34	0.79
2,136.0	15.80	89.60	2,079.5	-8.4	438.6	438.7	0.58	-0.56	0.56
2,224.0	15.00	89.40	2,164.4	-8.2	462.0	462.1	0.91	-0.91	-0.23
2,313.0	15.30	90.80	2,250.3	-8.3	485.3	485.3	0.53	0.34	1.57
2,401.0	15.20	89.90	2,335.2	-8.4	508.4	508.5	0.29	-0.11	-1.02
2,490.0	15.00	90.80	2,421.1	-8.6	531.6	531.7	0.35	-0.22	1.01
2,579.0	15.30	89.60	2,507.0	-8.7	554.9	554.9	0.49	0.34	-1.35
2,667.0	15.00	89.10	2,592.0	-8.4	577.9	577.9	0.37	-0.34	-0.57
2,754.0	14.50	90.10	2,676.1	-8.2	600.0	600.1	0.64	-0.57	1.15
2,838.0	14.50	91.50	2,757.4	-8.5	621.0	621.1	0.42	0.00	1.67
2,923.0	15.50	91.40	2,839.5	-9.1	643.0	643.1	1.18	1.18	-0.12
3,008.0	15.80	90.20	2,921.4	-9.4	666.0	666.0	0.52	0.35	-1.41
3,096.0	16.00	89.40	3,006.0	-9.3	690.1	690.1	0.34	0.23	-0.91
3,185.0	16.70	92.40	3,091.4	-9.7	715.1	715.2	1.23	0.79	3.37
3,274.0	16.70	90.90	3,176.6	-10.5	740.7	740.7	0.48	0.00	-1.69
3,362.0	16.30	90.20	3,261.0	-10.7	765.7	765.7	0.51	-0.45	-0.80
3,451.0	16.00	89.70	3,346.5	-10.7	790.4	790.5	0.37	-0.34	-0.56
3,540.0	16.40	89.60	3,432.0	-10.5	815.2	815.3	0.45	0.45	-0.11
3,628.0	16.30	91.30	3,516.4	-10.7	840.0	840.1	0.56	-0.11	1.93
3,717.0	15.40	88.00	3,602.0	-10.6	864.3	864.4	1.43	-1.01	-3.71
3,805.0	15.10	89.70	3,686.9	-10.1	887.5	887.5	0.61	-0.34	1.93
3,894.0	15.40	90.30	3,772.8	-10.1	910.9	910.9	0.38	0.34	0.67
3,983.0	15.70	91.40	3,858.5	-10.5	934.7	934.8	0.47	0.34	1.24
4,071.0	15.80	92.40	3,943.2	-11.3	958.6	958.7	0.33	0.11	1.14
4,160.0	15.80	90.10	4,028.9	-11.8	982.8	982.9	0.70	0.00	-2.58
4,249.0	15.30	90.00	4,114.6	-11.8	1,006.7	1,006.7	0.56	-0.56	-0.11
4,337.0	15.30	90.70	4,199.5	-12.0	1,029.9	1,030.0	0.21	0.00	0.80
4,426.0	15.00	90.90	4,285.4	-12.3	1,053.1	1,053.2	0.34	-0.34	0.22
4,515.0	14.60	90.60	4,371.5	-12.6	1,075.9	1,076.0	0.46	-0.45	-0.34
4,603.0	13.80	90.80	4,456.8	-12.9	1,097.5	1,097.5	0.91	-0.91	0.23
4,692.0	12.60	90.10	4,543.4	-13.0	1,117.8	1,117.9	1.36	-1.35	-0.79
4,780.0	11.80	90.90	4,629.4	-13.2	1,136.4	1,136.5	0.93	-0.91	0.91
4,869.0	10.30	94.40	4,716.8	-13.9	1,153.4	1,153.5	1.85	-1.69	3.93
4,958.0	9.60	96.00	4,804.4	-15.3	1,168.7	1,168.8	0.85	-0.79	1.80
5,046.0	8.00	92.00	4,891.4	-16.3	1,182.1	1,182.3	1.95	-1.82	-4.55
5,135.0	6.20	87.70	4,979.7	-16.3	1,193.1	1,193.3	2.11	-2.02	-4.83
5,224.0	5.00	86.10	5,068.3	-15.9	1,201.8	1,201.9	1.36	-1.35	-1.80
5,312.0	2.80	88.40	5,156.1	-15.5	1,207.8	1,207.9	2.51	-2.50	2.61
5,401.0	1.10	74.80	5,245.0	-15.3	1,210.8	1,210.9	1.97	-1.91	-15.28
5,490.0	1.00	74.00	5,334.0	-14.8	1,212.4	1,212.4	0.11	-0.11	-0.90
5,578.0	0.00	278.90	5,422.0	-14.6	1,213.1	1,213.2	1.14	-1.14	0.00
5,656.0	0.06	60.70	5,500.0	-14.6	1,213.1	1,213.2	0.08	0.08	0.00
TARGET BHL 1300'FSL, 50'FEL									
5,711.0	0.10	60.70	5,555.0	-14.5	1,213.2	1,213.3	0.08	0.08	0.00

Company:	Anadarko, Weld County CO	Local Co-ordinate Reference:	Well Badding 39-26
Project:	SEC.26-T2N-R66W	TVD Reference:	WELL @ 5101.0ft (Original Well Elev)
Site:	Badding 20-26 Pad Sec.26-T2N-R66W	MD Reference:	WELL @ 5101.0ft (Original Well Elev)
Well:	Badding 39-26	North Reference:	True
Wellbore:	Wellbore #1	Survey Calculation Method:	Minimum Curvature
Design:	Wellbore #1	Database:	Landmark

Survey

Measured Depth (ft)	Inclination (°)	Azimuth (°)	Vertical Depth (ft)	+N/-S (ft)	+E/-W (ft)	Vertical Section (ft)	Dogleg Rate (°/100ft)	Build Rate (°/100ft)	Turn Rate (°/100ft)
5,844.0	0.40	34.70	5,688.0	-14.1	1,213.6	1,213.6	0.24	0.23	-19.55
5,977.0	0.50	36.50	5,821.0	-13.3	1,214.2	1,214.2	0.08	0.08	1.35
6,110.0	0.80	214.00	5,954.0	-13.6	1,214.0	1,214.1	0.98	0.23	133.46
6,243.0	0.70	30.70	6,087.0	-13.6	1,213.9	1,214.0	1.13	-0.08	132.86
6,376.0	0.60	39.40	6,220.0	-12.4	1,214.7	1,214.8	0.11	-0.08	6.54
6,509.0	0.80	29.80	6,353.0	-11.1	1,215.7	1,215.7	0.17	0.15	-7.22
6,642.0	0.60	40.10	6,486.0	-9.7	1,216.6	1,216.6	0.18	-0.15	7.74
6,775.0	0.70	49.40	6,619.0	-8.7	1,217.6	1,217.6	0.11	0.08	6.99
6,908.0	0.80	25.00	6,751.9	-7.3	1,218.6	1,218.6	0.25	0.08	-18.35
7,041.0	0.60	6.00	6,884.9	-5.8	1,219.1	1,219.1	0.23	-0.15	-14.29
7,174.0	0.60	351.50	7,017.9	-4.4	1,219.1	1,219.0	0.11	0.00	-10.90
7,307.0	0.70	356.50	7,150.9	-2.9	1,218.9	1,218.9	0.09	0.08	3.76
7,348.0	0.73	352.23	7,191.9	-2.4	1,218.9	1,218.8	0.15	0.07	-10.43
TARGET CIRCLE 1300'FSL & 50'FEL									
7,440.0	0.80	343.80	7,283.9	-1.2	1,218.6	1,218.5	0.15	0.08	-9.15
7,573.0	0.90	344.00	7,416.9	0.7	1,218.1	1,218.0	0.08	0.08	0.15
7,706.0	0.70	19.50	7,549.9	2.5	1,218.0	1,217.9	0.39	-0.15	26.69
7,839.0	0.80	14.30	7,682.9	4.2	1,218.5	1,218.4	0.09	0.08	-3.91
7,972.0	1.20	13.90	7,815.8	6.4	1,219.1	1,218.9	0.30	0.30	-0.30
8,104.0	0.80	10.70	7,947.8	8.7	1,219.6	1,219.4	0.31	-0.30	-2.42
8,237.0	0.70	6.00	8,080.8	10.4	1,219.9	1,219.7	0.09	-0.08	-3.53
8,266.7	0.70	6.00	8,110.5	10.7	1,219.9	1,219.7	0.00	0.00	0.00
HARD LINES 50'E OF BHL									
8,290.0	0.70	6.00	8,133.8	11.0	1,219.9	1,219.7	0.00	0.00	0.00

Checked By: _____ Approved By: _____ Date: _____