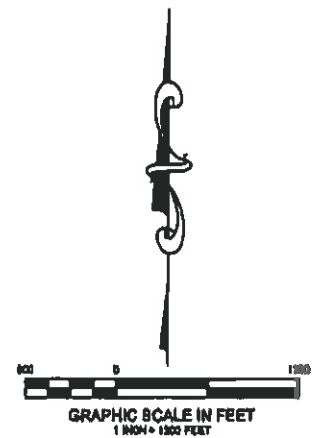
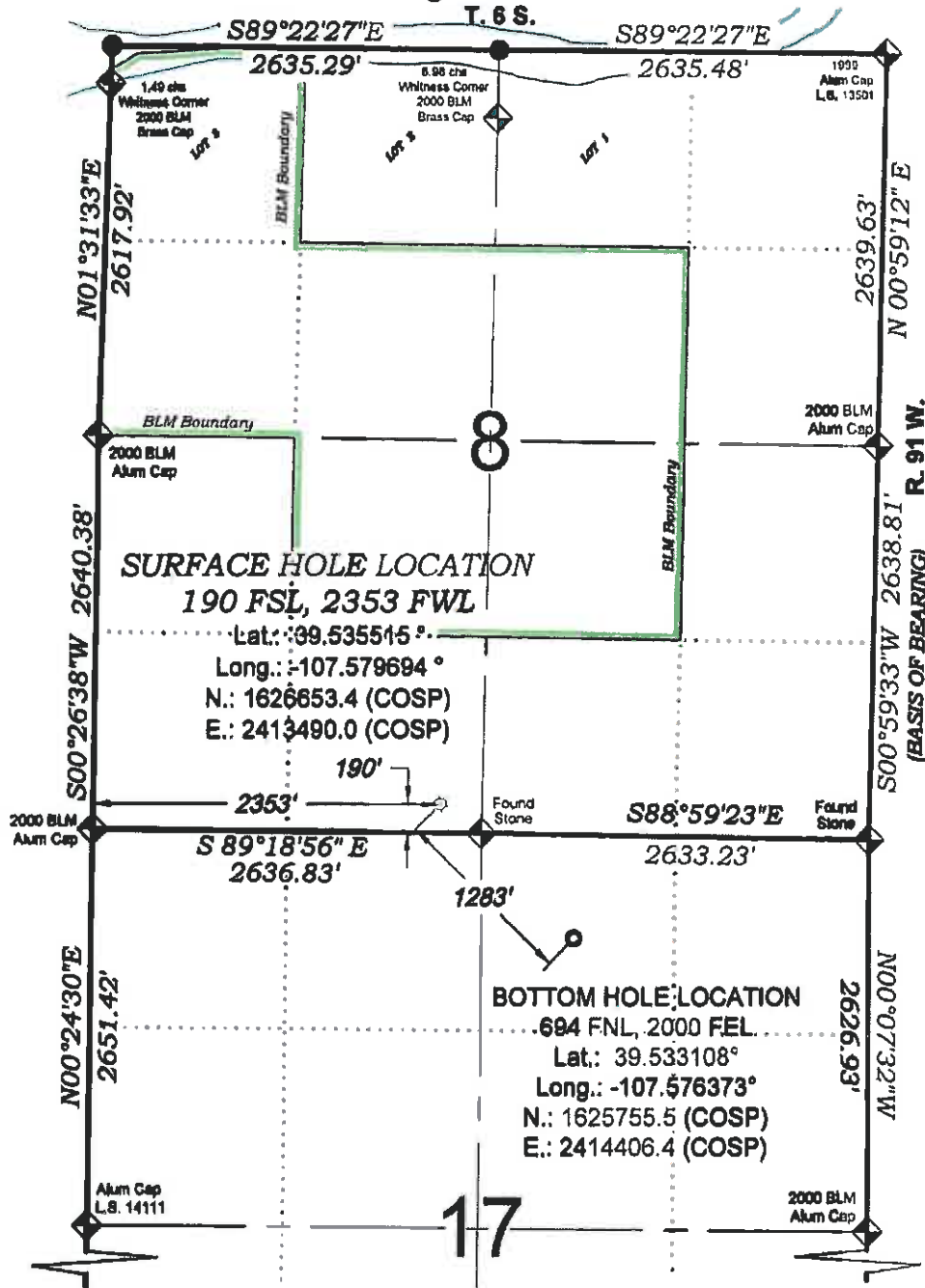


# Jolley KP 431-17



THERE ARE NO VISIBLE IMPROVEMENTS WITHIN 400' OF THIS LOCATION

PROPOSED PAD ELEV.: 6528.0  
EXISTING GROUND ELEV.: 6528.0

## - LEGEND -

FIELD LOCATED SECTION MONUMENTS AS DESCRIBED

FIELD SURVEYED WELL LOCATION

CALCULATED BOTTOM HOLE LOCATION

CALCULATED SECTION CORNER LOCATION

## SURVEYORS STATEMENT

I, MICHAEL J. LANGHORNE, A REGISTERED LAND SURVEYOR IN THE STATE OF COLORADO DO HEREBY CERTIFY THAT THE SURVEY SHOWN HEREON WAS PREPARED UNDER MY DIRECT SUPERVISION AND HAS BEEN STAKED ON THE GROUND AS SHOWN ON THE PLAT AND CHECKING THAT THIS MAP IS A TRUE REPRESENTATION THEREOF.

MICHAEL J. LANGHORNE, COLORADO REGISTRATION NO. 36572  
FOR AND ON BEHALF OF  
BOOKCLIFF SURVEY SERVICES, INC.

## NOTES

- 1) ELEVATIONS BASED ON N.A.V.D. 1988 PUBLISHED COORDINATES.
- 2) LATITUDES AND LONGITUDES ARE BASE ON NAD 83, PUBLISHED COORDINATES
- 3) STATE PLANE COORDINATES ARE BASED ON COLORADO CENTRAL ZONE, U.S. SURVEY FEET.
- 4) ELEVATION MASK SET TO 15"
- 5) GPS OPERATOR J. KIRKPATRICK, OBSERVED A PDOP OF 2.52 FOR SURVEY POINT NUMBER 79728.
- 6) SURFACE AND BOTTOM HOLE LOCATIONS ARE MEASURED 90° FROM SECTION LINES.

## REFERENCES

- 1) DEPENDENT RESURVEY T. 6 S., R. 91 W., 6th P.M. (GLO PLAT)
- 2) U.S.G.S. QUAD: NEW CASTLE, CO

WELL LOCATION PLAT Prepared for:  
**Williams Williams Production, RMT**

SE1/4 SW1/4, SECTION 8  
T. 6 S., R. 91 W. of the 6th P.M.  
GARFIELD COUNTY, COLORADO

SURVEY DATE: 12/14/09  
MAP DATE: 6/3/11  
SCALE: 1" = 1200'  
PLAT: 1 of 1  
PROJECT: Williams Valley

**BOOKCLIFF**  
Survey Services, Inc.

101 East Third Street  
P.O. Box 11100  
P.O. Box 11100  
P.O. Box 11100

