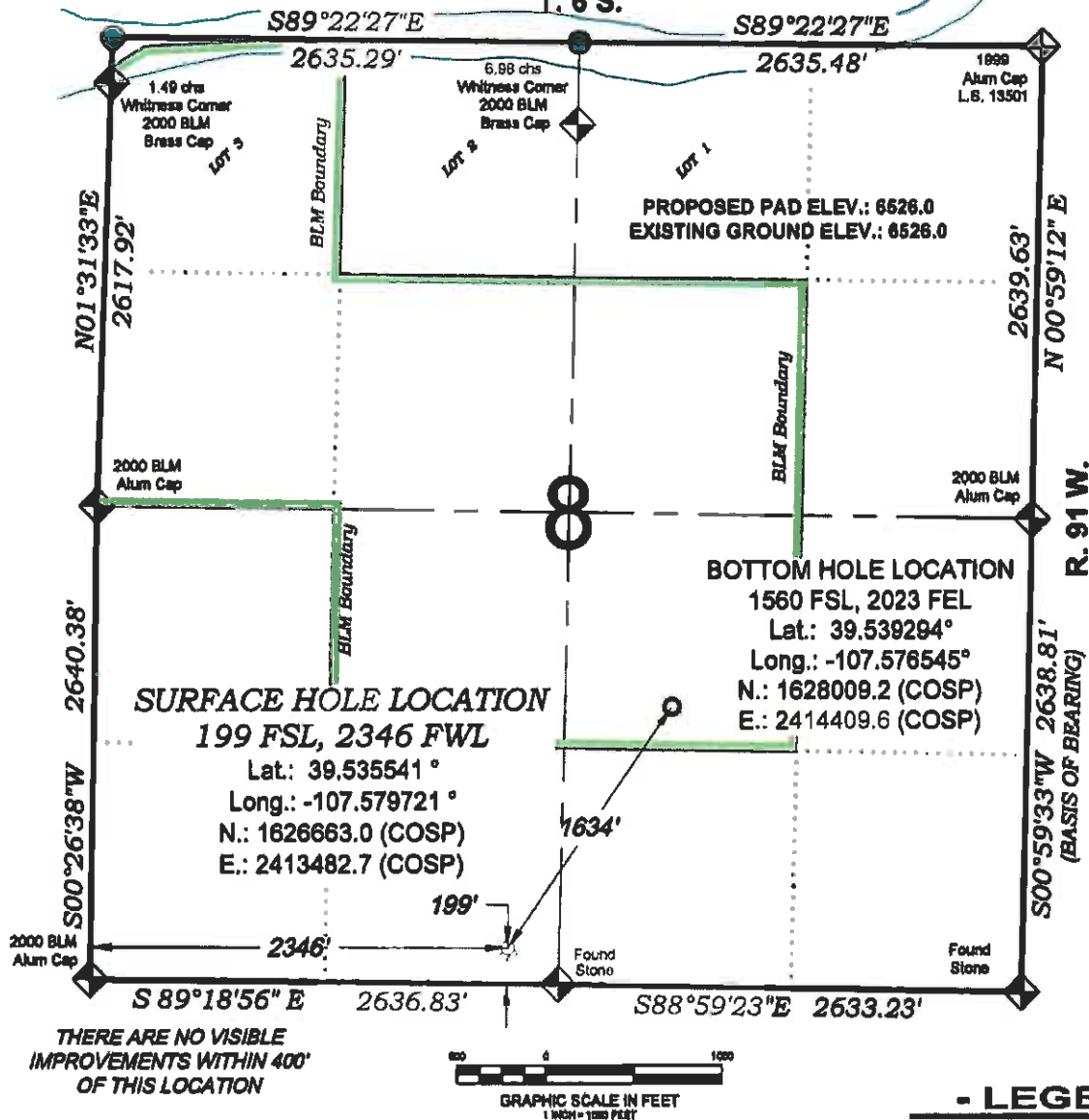


Jolley KP 533-8

T. 6 S.



SURVEYORS STATEMENT

I, MICHAEL J. LANGHORNE, A REGISTERED LAND SURVEYOR IN THE STATE OF COLORADO DO HEREBY CERTIFY THAT THE SURVEY SHOWN HEREON WAS PREPARED UNDER MY DIRECT SUPERVISION AND HAS BEEN STAKED ON THE GROUND AS SHOWN ON THE PLAT AND CHECKING THAT THIS MAP IS A TRUE REPRESENTATION THEREOF.

MICHAEL J. LANGHORNE, COLORADO REGISTRATION NO. 36572
FOR AND ON BEHALF OF
BOOKCLIFF SURVEY SERVICES, INC.

REFERENCES

- 1) DEPENDENT RESURVEY T. 6 S., R. 91 W., 6th P.M. (GLO PLAT)
- 2) U.S.G.S. QUAD: NEW CASTLE, CO

NOTES

- 1) ELEVATIONS BASED ON N.A.V.D. 1988 PUBLISHED COORDINATES.
- 2) LATITUDES AND LONGITUDES ARE BASED ON NAD 83, PUBLISHED COORDINATES
- 3) STATE PLANE COORDINATES ARE BASED ON COLORADO CENTRAL ZONE, U.S. SURVEY FEET.
- 4) ELEVATION MASK SET TO 15"
- 5) GPS OPERATOR J. KIRKPATRICK, OBSERVED A PDOP OF 2.52 FOR SURVEY POINT NUMBER 79728.
- 6) SURFACE AND BOTTOM HOLE LOCATIONS ARE MEASURED 90° FROM SECTION LINES.

FIELD LOCATED SECTION MONUMENTS AS DESCRIBED

FIELD SURVEYED WELL LOCATION

CALCULATED BOTTOM HOLE LOCATION

CALCULATED SECTION CORNER LOCATION

WELL LOCATION PLAT Prepared for:
Williams. Williams Production, RMT

SE1/4 SW1/4, SECTION 8
T. 6 S., R. 91 W. of the 6th P.M.
GARFIELD COUNTY, COLORADO

SURVEY DATE: 12/14/09
MAP DATE: 6/3/11
SCALE: 1" = 1000'
PLAT: 1 of 1
PROJECT: Williams Valley

BOOKCLIFF
Survey Services, Inc.

2010 BookCliff Survey
Maple, Colorado 81401
PH: (970) 423-2520
FAX: (970) 423-2773