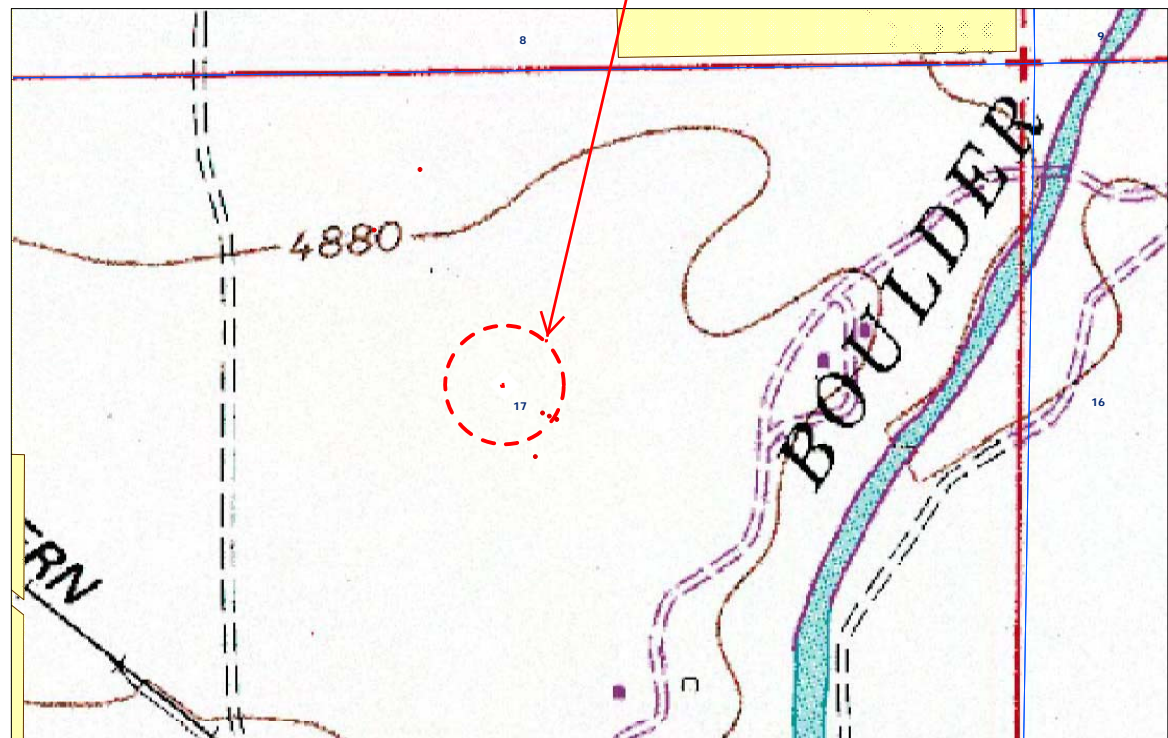
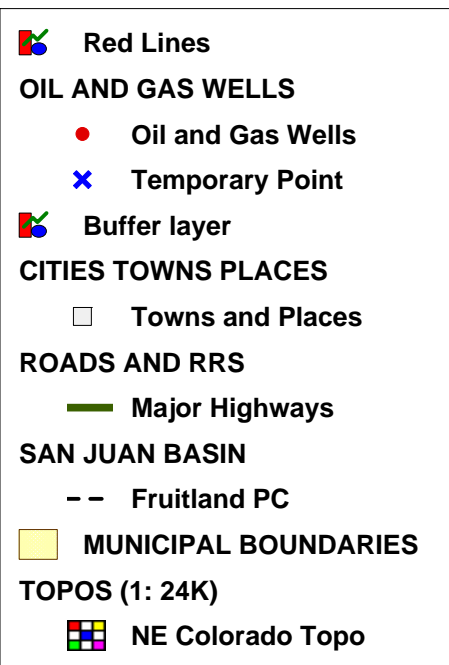


FILE NWNE17 MULTI WELL PAD REFERENCE AREA MAP

Reference Area was chosen approximately 200' Northeastly from proposed padsite location.
Field observation on 7/12/11-Meadow Knapweed was seen in and around reference area.



Reference Area
chosen at
Lat 40.14335
Long -105.02324

SCALE 1 : 7,760

