

XTO ENERGY INC EBUSINESS

Golden Eagle 30-02

Pense Drilling #19

Post Job Summary

Cement Surface Casing

Prepared for:
Date Prepared:
Version: 1

Ron Coffee
7/12/2011

Service Supervisor: Larry Lavalley

Submitted by: Wes Aaron

HALLIBURTON

HALLIBURTON

Service Supervisor Reports

Job Log

Date/Time	Chart #	Activity Code	Pump Rate	Cum Vol	Pump		Pressure (psig)	Comments
06/14/2011 03:54		Start Job						
06/14/2011 03:55		Test Lines					1500.0	TESTED LINES WITH RIG WATER
06/14/2011 03:56		Pump Spacer 1	3	70			82.0	RIG WATER WITH NO ADDITIVES
06/14/2011 04:16		Other						SHUTDOWN AND WAITED FO FALLBACK
06/14/2011 04:19		Pump Lead Cement	3	84			55.0	260 SKS TRINIDAD SURFACE BLEND MIXED @ 13.5 PPG 37 BBLS CMT BACK TO PIT
06/14/2011 04:52		Other						WAITED FOR FALLBACK
06/14/2011 05:04		Pump Displacement	3	35			187.0	RIG WATER WITH NO ADDITIVES

The Road to Excellence Starts with Safety

Sold To #: 353810	Ship To #: 2859537	Quote #:	Sales Order #: 8244071
Customer: XTO ENERGY INC EBUSINESS		Customer Rep: Coffee, Ron	
Well Name: Golden Eagle		Well #: 30-02	API/UWI #:
Field:	City (SAP): TRINIDAD	County/Parish: Las Animas	State: Colorado
Contractor: Pense Drilling		Rig/Platform Name/Num: #19	
Job Purpose: Cement Surface Casing			
Well Type: Development Well		Job Type: Cement Surface Casing	
Sales Person: FLING, MATTHEW		Srvc Supervisor: LAVALLEY, LARRY	MBU ID Emp #: 419296

Job Personnel

HES Emp Name	Exp Hrs	Emp #	HES Emp Name	Exp Hrs	Emp #	HES Emp Name	Exp Hrs	Emp #
CONGDON, RICHARD S.		320306	FLYNN, SHAD Michael		476484	LAVALLEY, LARRY P		419296
OZBUN, RYAN Jacob		475709						

Equipment

HES Unit #	Distance-1 way	HES Unit #	Distance-1 way	HES Unit #	Distance-1 way	HES Unit #	Distance-1 way
10025030	40 mile	10824253C	40 mile	10948695	40 mile	11338223	40 mile
11518549	40 mile						

Job Hours

Date	On Location Hours	Operating Hours	Date	On Location Hours	Operating Hours	Date	On Location Hours	Operating Hours
TOTAL	Total is the sum of each column separately							

Job

Formation Name					Job Times			
Formation Depth (MD)	Top		Bottom		Called Out	Date	Time	Time Zone
Form Type	BHST				On Location	14 - Jun - 2011	02:30	MST
Job depth MD	650. ft				Job Started	14 - Jun - 2011	03:55	MST
Water Depth	Wk Ht Above Floor				Job Completed	14 - Jun - 2011	05:05	MST
Perforation Depth (MD)	From		To		Departed Loc	14 - Jun - 2011	05:30	MST

Well Data

Description	New / Used	Max pressure psig	Size in	ID in	Weight lbm/ft	Thread	Grade	Top MD ft	Bottom MD ft	Top TVD ft	Bottom TVD ft
11" Openhole				11.				47.	640.		
8 5/8" Surface Casing	Unknown		8.625	8.097	24.			.	636.		

Tools and Accessories

Type	Size	Qty	Make	Depth	Type	Size	Qty	Make	Depth	Type	Size	Qty	Make
Guide Shoe					Packer					Top Plug			
Float Shoe					Bridge Plug					Bottom Plug			
Float Collar					Retainer					SSR plug set			
Insert Float										Plug Container			
Stage Tool										Centralizers			

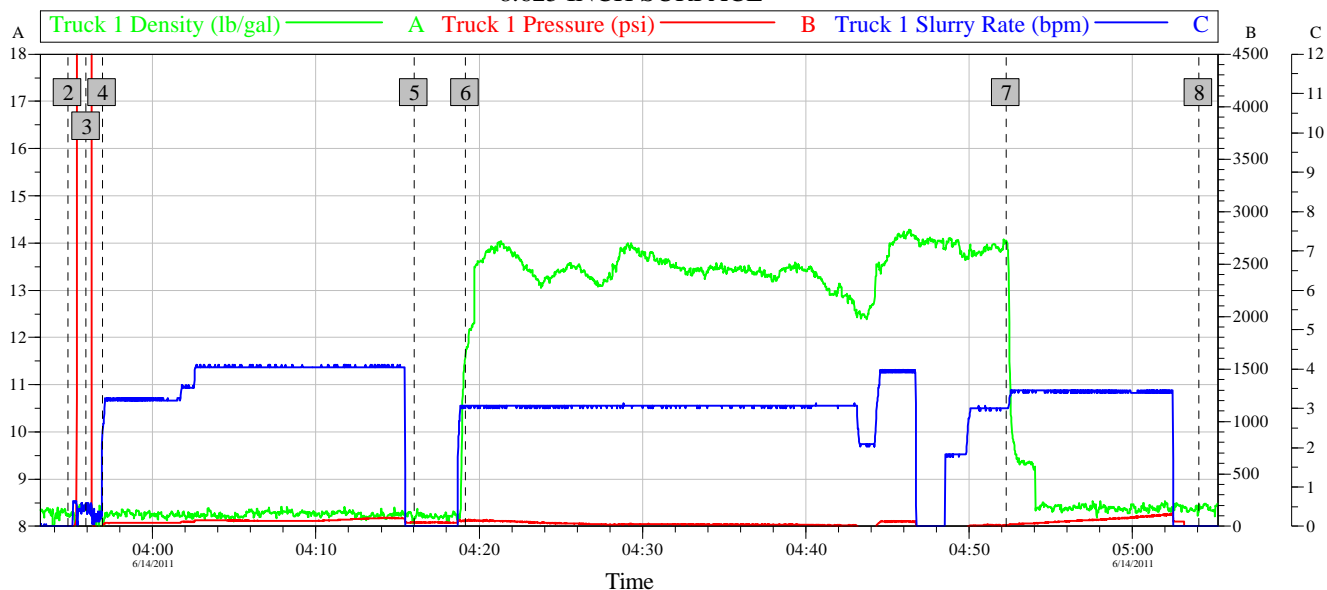
Miscellaneous Materials

Gelling Agt	Conc	Surfactant	Conc	Acid Type	Qty	Conc	%
Treatment Fld	Conc	Inhibitor	Conc	Sand Type	Size	Qty	

Fluid Data

Stage/Plug #: 1									
Fluid #	Stage Type	Fluid Name	Qty	Qty uom	Mixing Density lbm/gal	Yield ft ³ /sk	Mix Fluid Gal/sk	Rate bbl/min	Total Mix Fluid Gal/sk
1	FRESH WATER		70.00	bbl	8.33	.0	42.0	3.0	
2	Trinidad Surface Blend	TRINIDAD SURFACE BLEND - SBM (137081)	260.0	sacks	13.5	1.81	8.81	4.0	8.81
	0.125 lbm	POLY-E-FLAKE (101216940)							
	2 %	CAL-SEAL 60, 50 LB BAG (101217146)							
	2 %	ECONOLITE (100001580)							
	5 lbm	GILSONITE, 50 LB BAG (100001618)							
	0.2 %	VERSASET, 55 LB SK (101376573)							
	6 %	SALT, 100 LB BAG (100003652)							
	8.81 Gal	FRESH WATER							
3	DISPLACEMENT		35.00	bbl	8.33	.0	42.0	3.0	
Calculated Values		Pressures		Volumes					
Displacement		Shut In: Instant		Lost Returns		Cement Slurry		Pad	
Top Of Cement		5 Min		Cement Returns		Actual Displacement		Treatment	
Frac Gradient		15 Min		Spacers		Load and Breakdown		Total Job	
Rates									
Circulating		Mixing		Displacement		Avg. Job			
Cement Left In Pipe	Amount	0 ft	Reason	Shoe Joint					
Frac Ring # 1 @	ID	Frac ring # 2 @	ID	Frac Ring # 3 @	ID	Frac Ring # 4 @	ID		
The Information Stated Herein Is Correct				Customer Representative Signature					

GOLDEN EAGLE 30-02 8.625 INCH SURFACE



Global Event Log

Intersection		TID	TIP	TISR	Intersection		TID	TIP	TISR
1 Starting Job	03:42:47	2.320	-80.87	0.000	2 Start Job	03:54:48	8.240	-0.343	0.000
3 Test Lines	03:55:56	8.351	4883	0.457	4 Pump Spacer 1	03:56:56	6.375	6.068	2.413
5 Shutdown	04:16:00	8.139	37.20	0.000	6 Pump Lead Cement	04:19:09	11.58	55.69	3.035
7 Pump Displacement	04:52:16	14.03	10.33	3.000	8 End Job	05:04:03	8.301	-32.03	0.000
9 Ending Job	05:13:25	0.324	-50.42	5.609					

Customer:	Job Date: 14-Jun-2011	Sales Order #: 8244071
Well Description:	UWI:	

HALLIBURTON
OptiCem v6.4.2
14-Jun-11 05:15