

Company		XTO Energy		Company		XTO Energy	
Well		Golden Eagle 30-02		Well		Golden Eagle 30-02	
Field		Purgatoire River		Field		Purgatoire River	
County		Las Animas		County		Las Animas	
State		Co.		State		Co.	
Location:				API # : 05 071 09854			
SEC 30 TWP 33S RGE 67W				423' FNL & 1895' FEL			
Permanent Datum		GL		Elevation		7277'	
Log Measured From		KB 4' AGL		Elevation		K.B. 7281'	
Drilling Measured From		KB		Elevation		D.F. 7279'	
				Elevation		G.L. 7277'	
Date		6-23-11					
Run Number		One					
Depth Driller		1923'					
Depth Logger		1858'					
Bottom Logged Interval		1856'					
Top Log Interval		Surface					
Open Hole Size		7 7/8"					
Type Fluid		Water					
Density / Viscosity		////					
Max. Recorded Temp.		////					
Estimated Cement Top		Surface					
Time Well Ready		4:00 p.m.					
Time Logger on Bottom		4:30 p.m.					
Equipment Number		601					
Location		Trinidad, Co.					
Recorded By		L. Smith					
Witnessed By		Mr. Eddie Haught					
Borehole Record				Tubing Record			
Run Number	Bit	From	To	Size	Weight	From	To
Casing Record	Size			Wgt/Ft		Top	Bottom
Surface String	8 5/8"					00	633'
Prot. String							
Production String							
Liner							

<<< Fold Here >>>

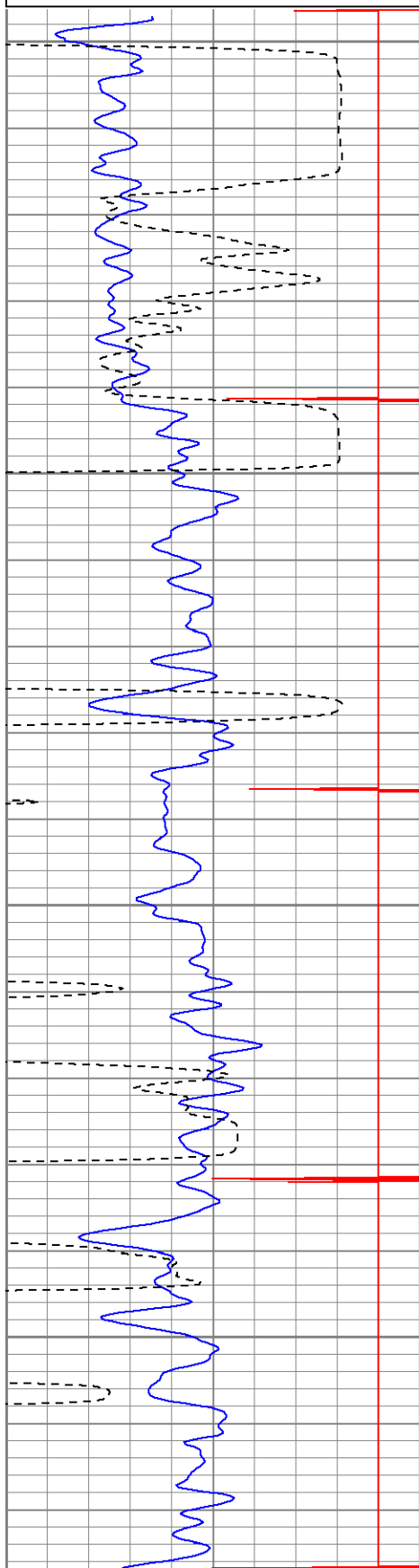
All interpretations are opinions based on inferences from electrical or other measurements and we cannot and do not guarantee the accuracy or correctness of any interpretation, and we shall not, except in the case of gross or willful negligence on our part, be liable or responsible for any loss, costs, damages, or expenses incurred or sustained by anyone resulting from any interpretation made by any of our officers, agents or employees. These interpretations are also subject to our general terms and conditions set out in our current Price Schedule.

Comments

Database File: ge30-02cbl.db  
Dataset Pathname: pass5.1  
Presentation Format: cblrt  
Dataset Creation: Thu Jun 23 17:44:01 2011 by Calc Open-Cased 090629  
Charted by: Depth in Feet scaled 1:240

0	GR (GAPI)	150
450	TT3 (usec)	250
9	CCL	-1

0	Amplitude (mV)	100	200	VDL	1200
---	----------------	-----	-----	-----	------

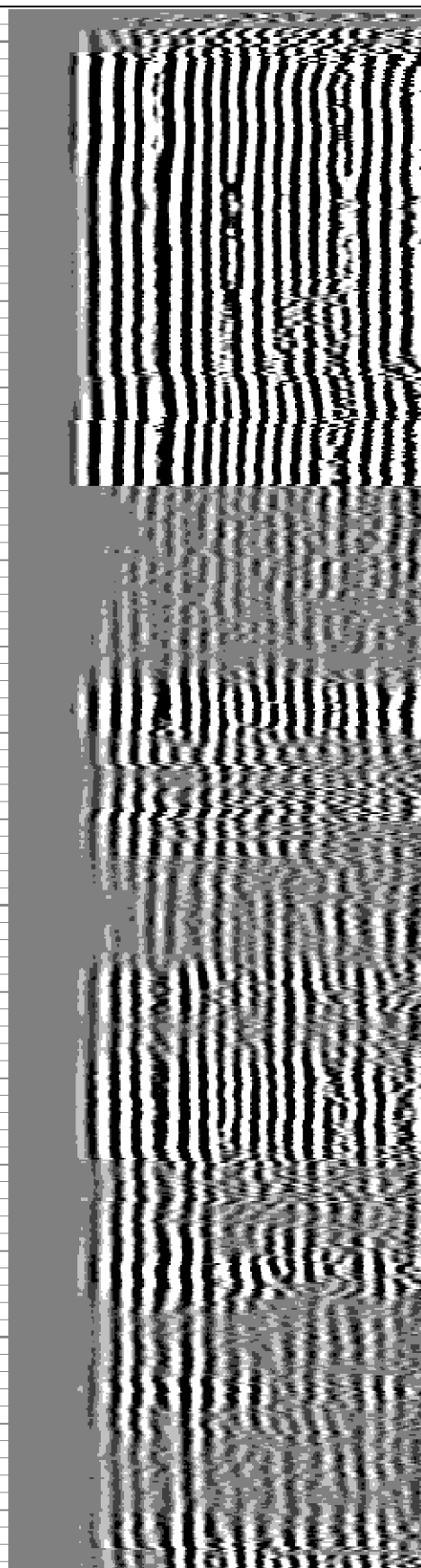
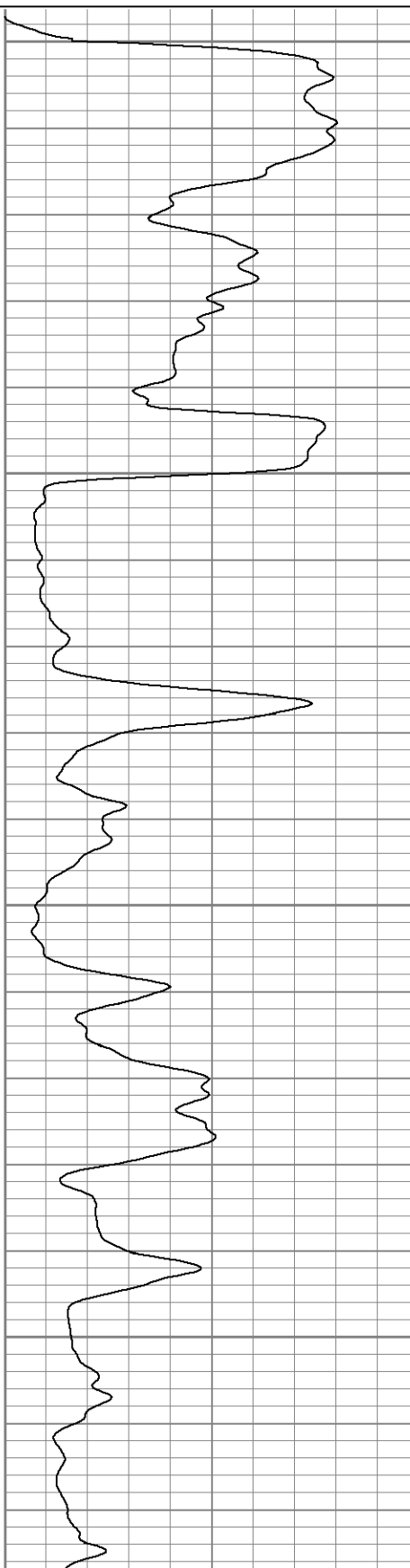


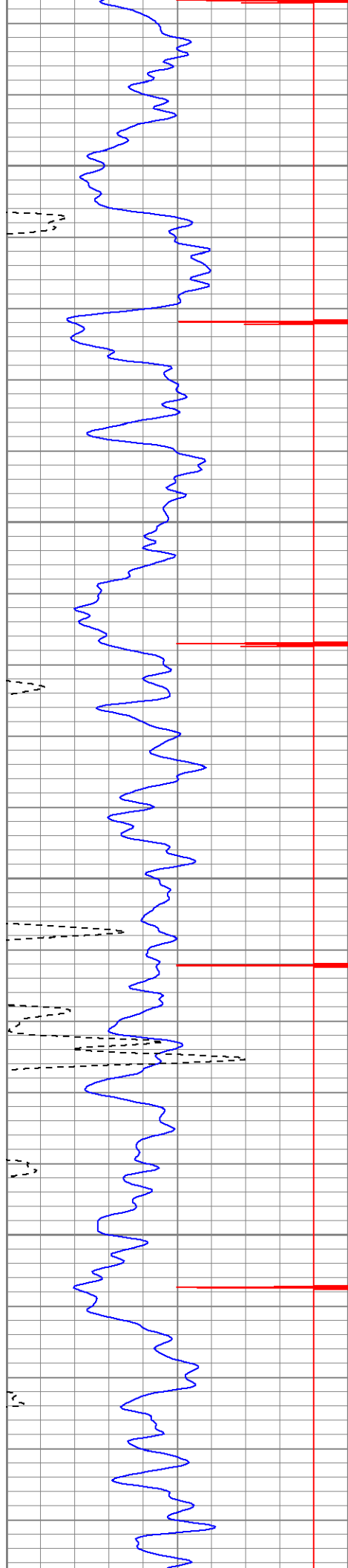
0

50

100

150



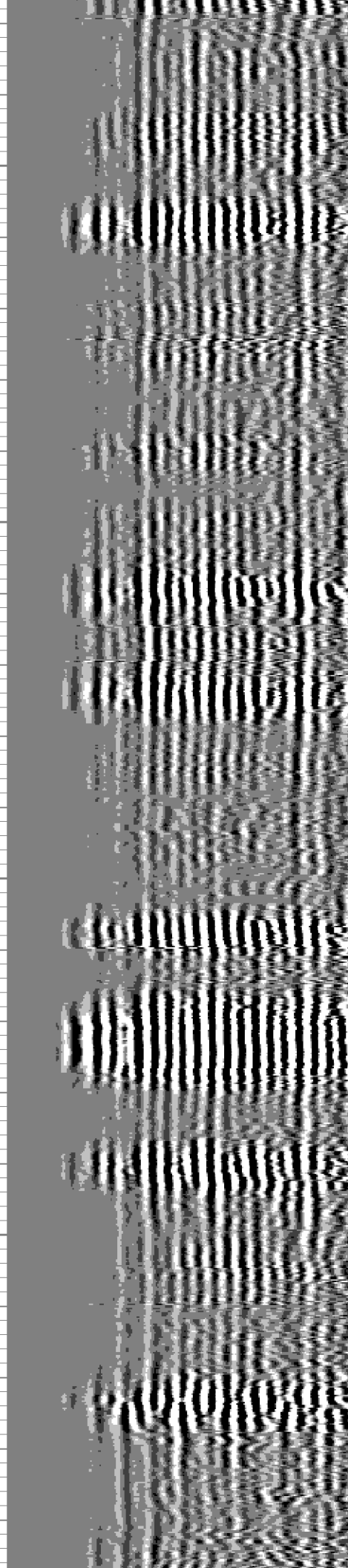
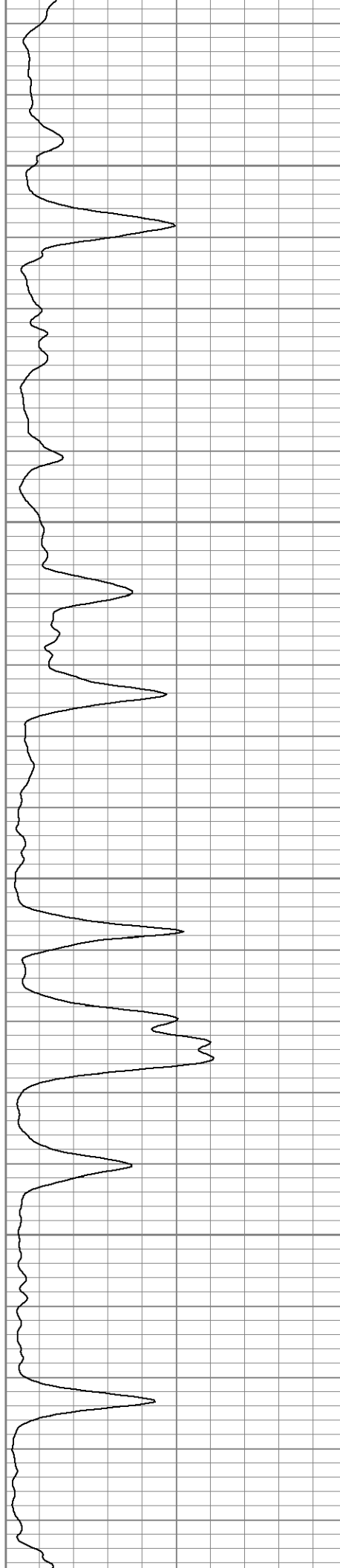


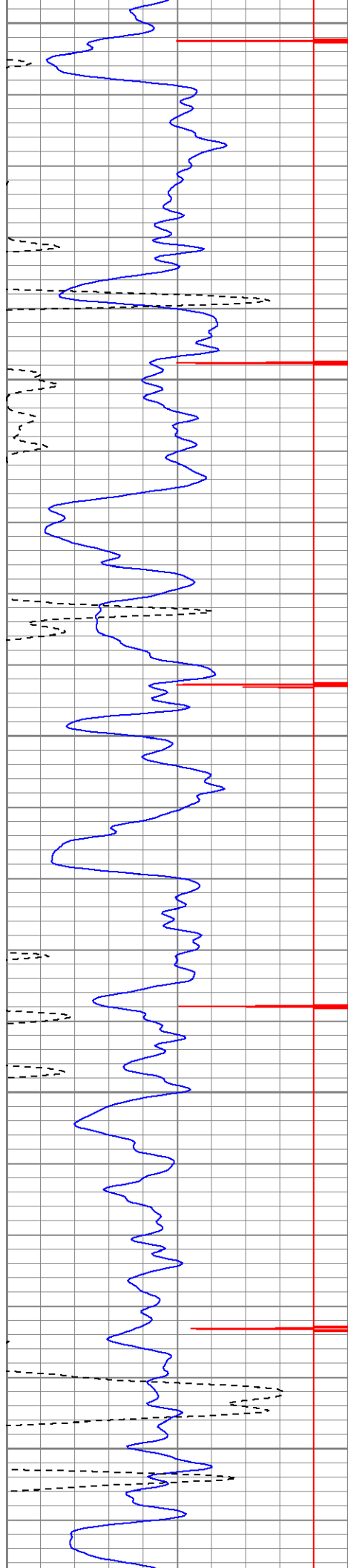
200

250

300

350





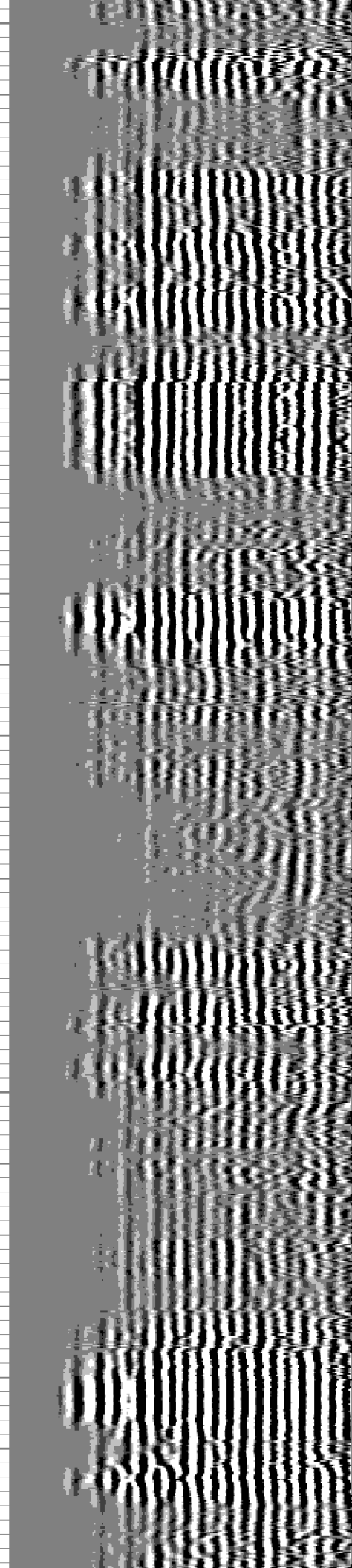
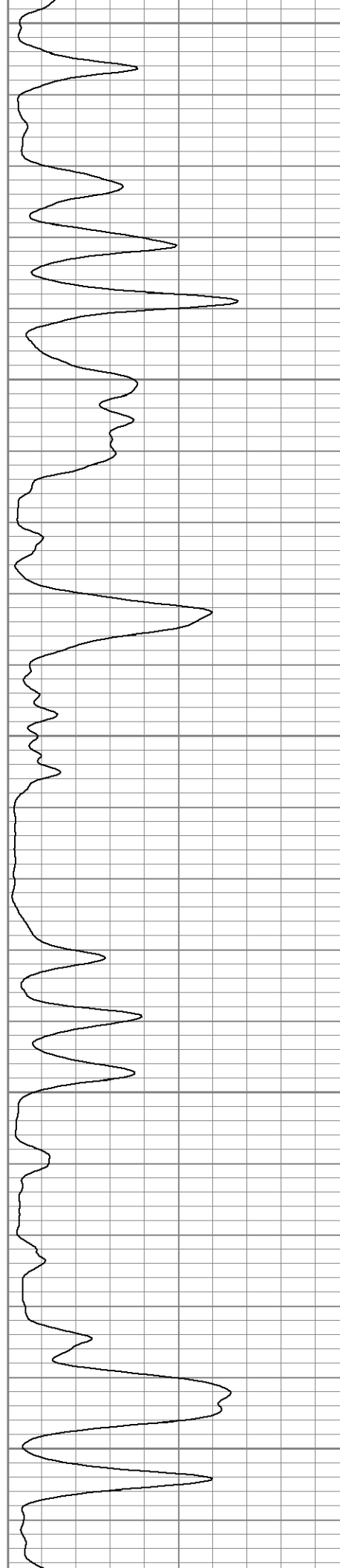
400

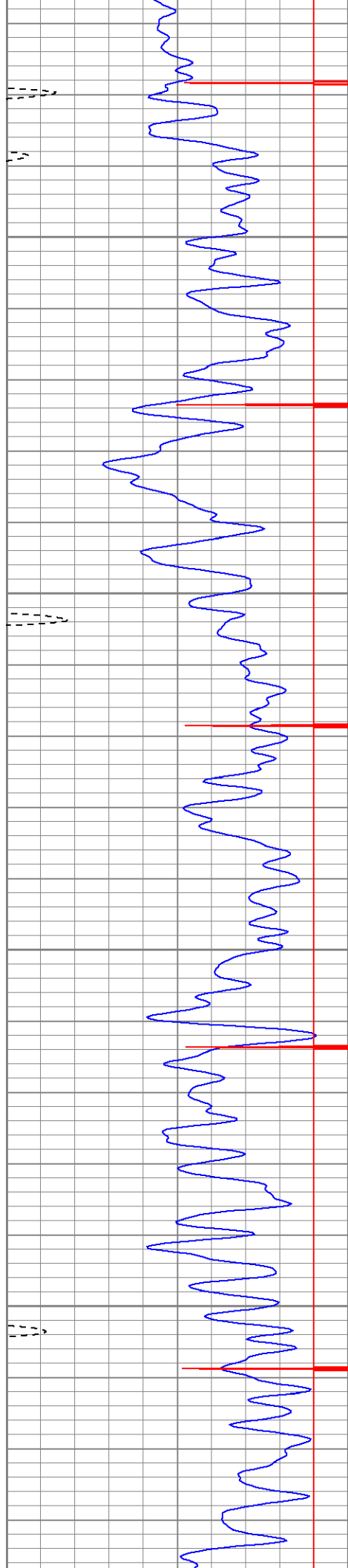
450

500

550

600



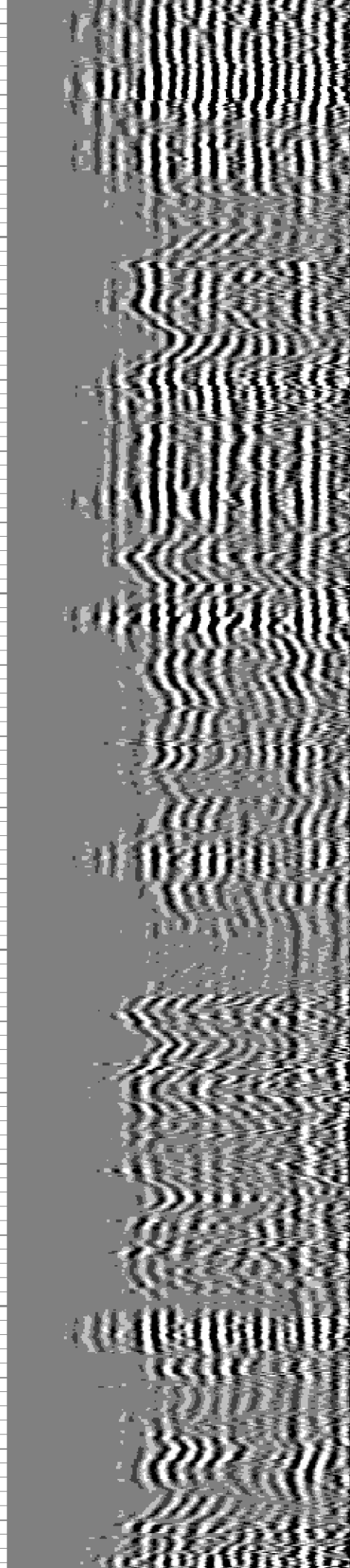
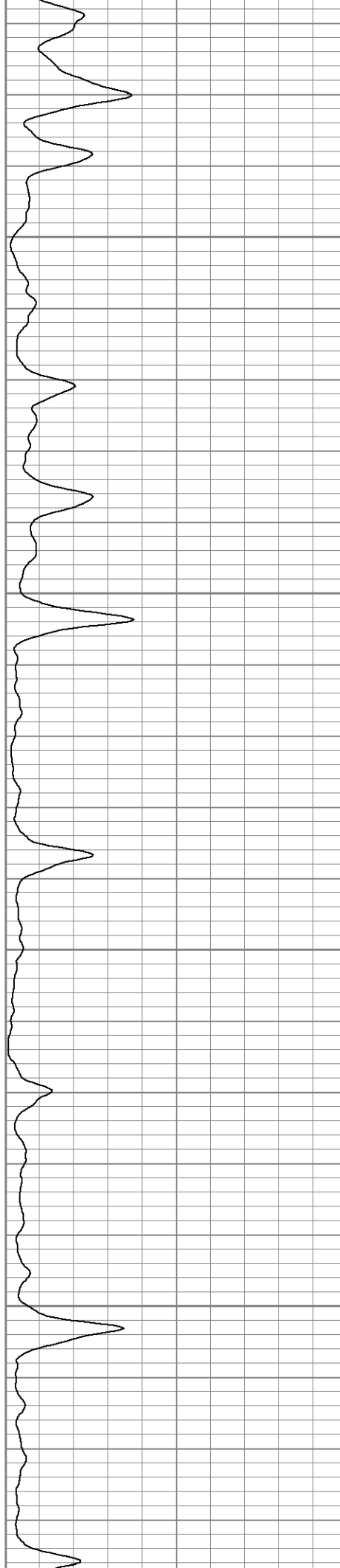


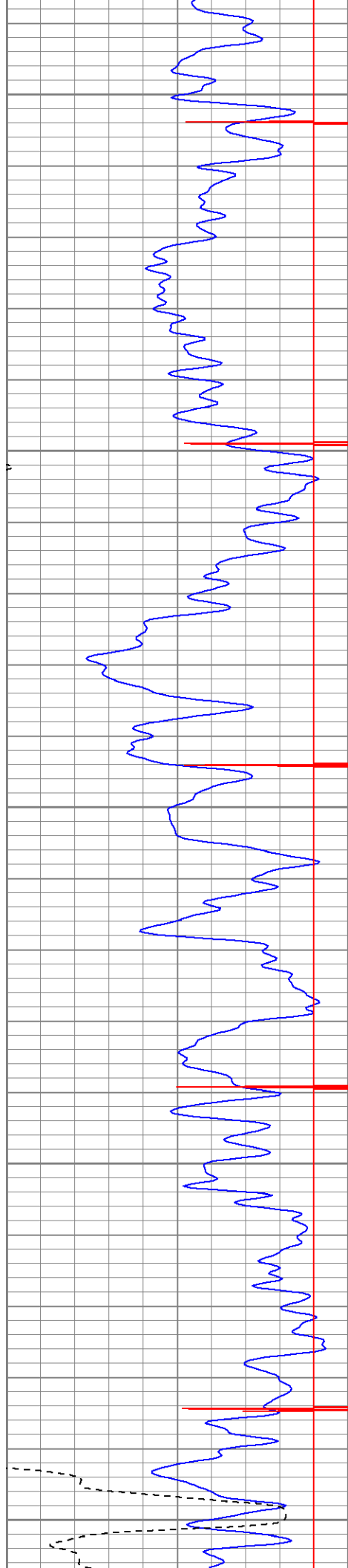
650

700

750

800





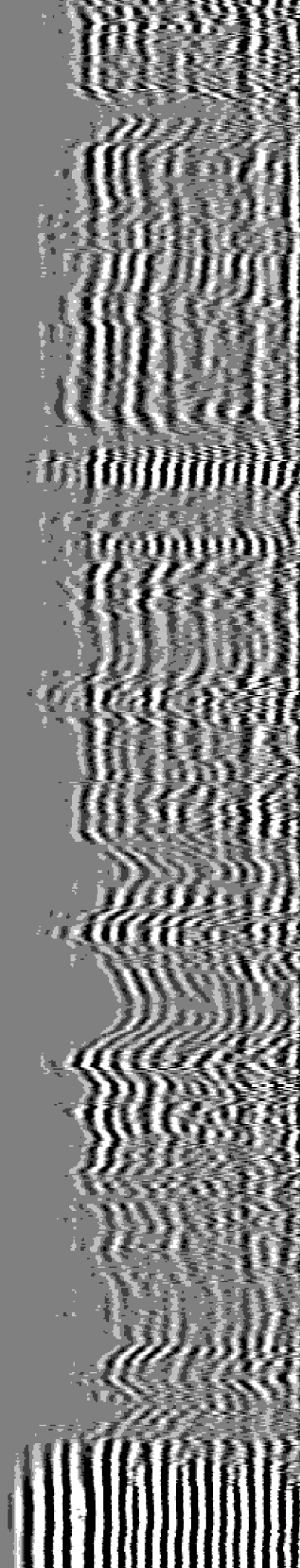
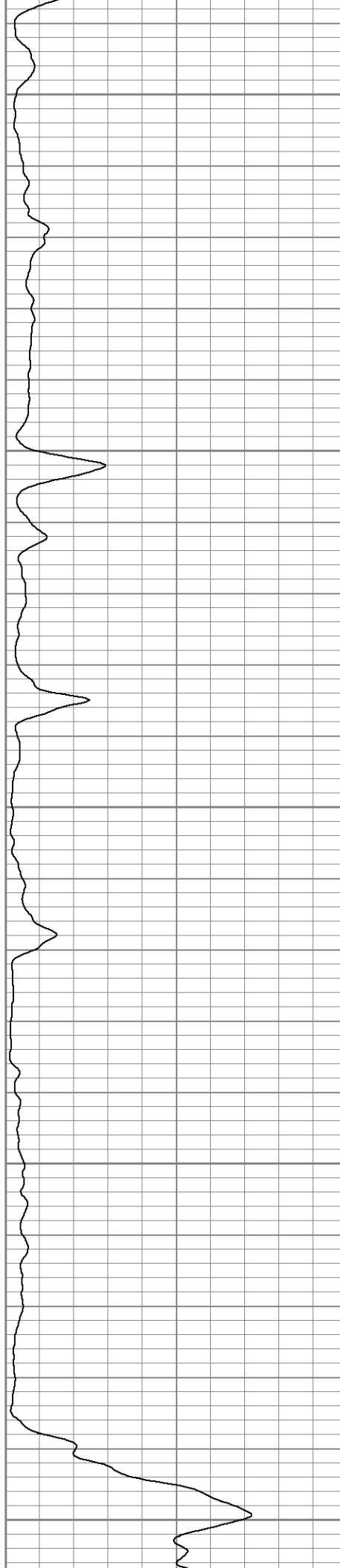
850

900

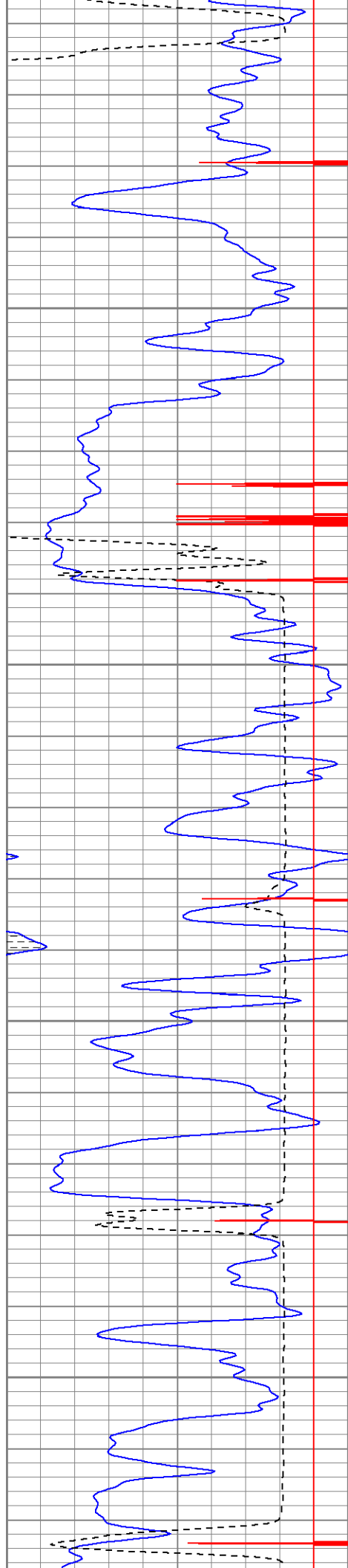
950

1000

1050





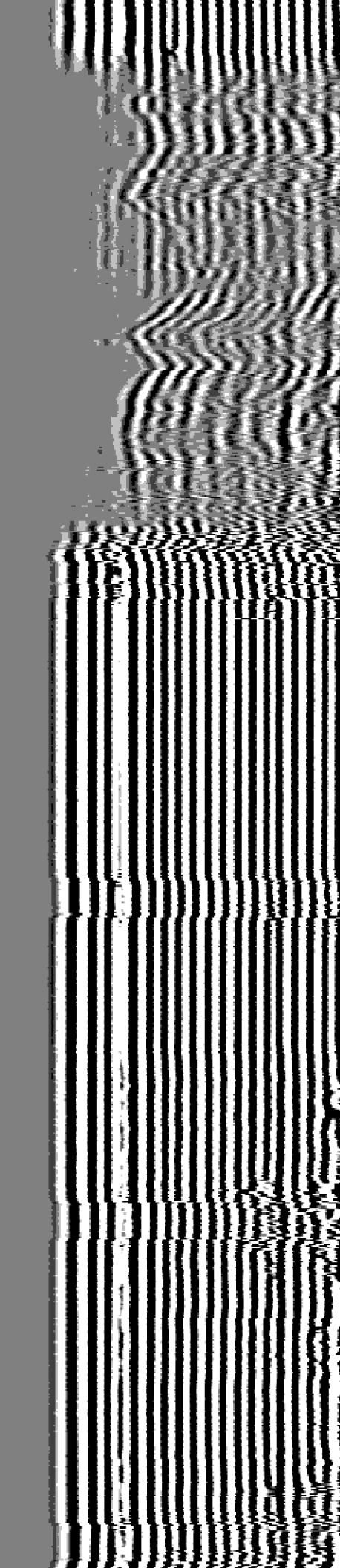
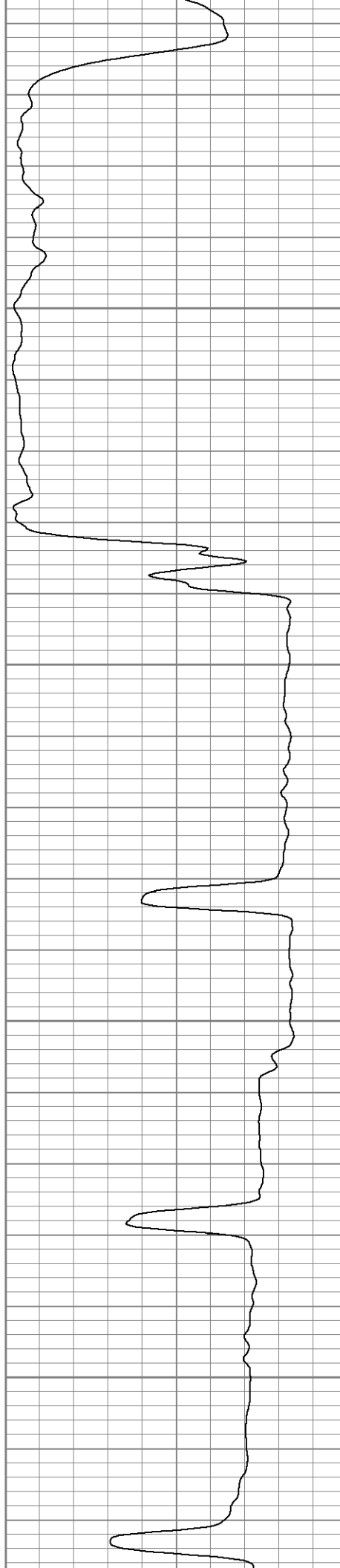


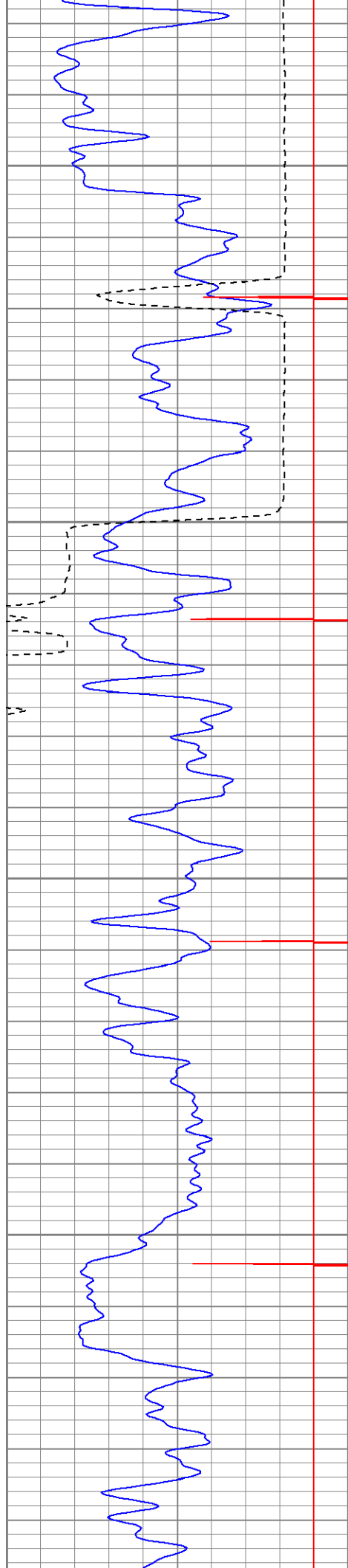
1100

1150

1200

1250



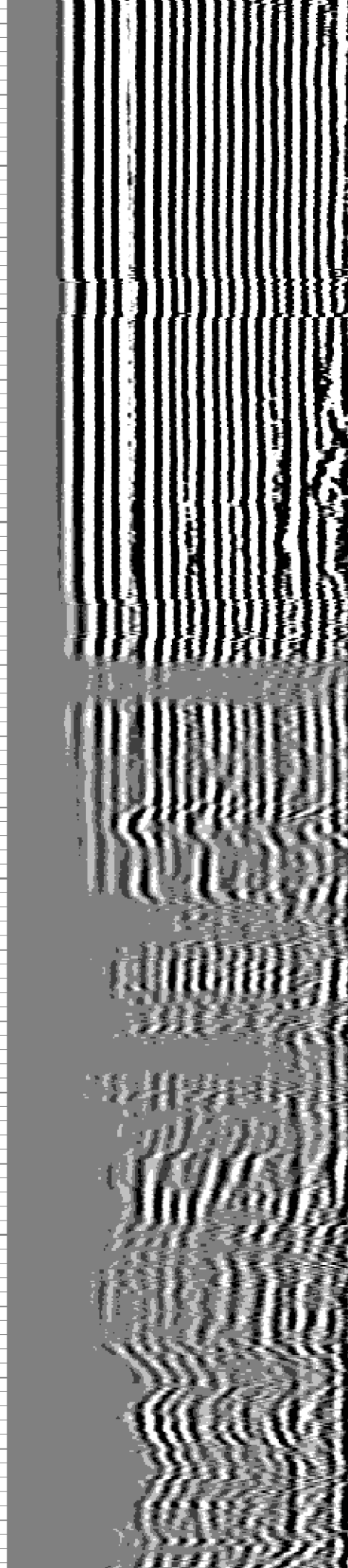
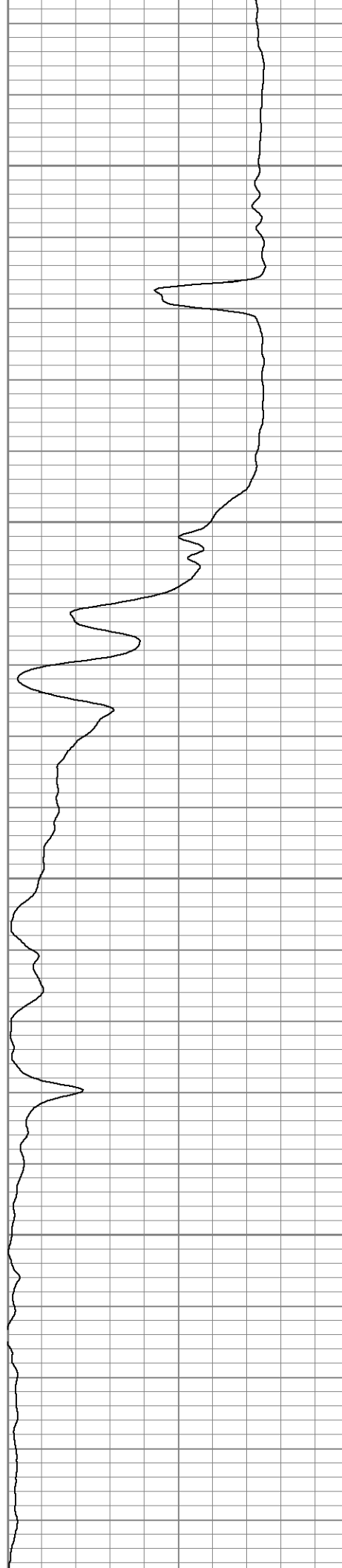


1300

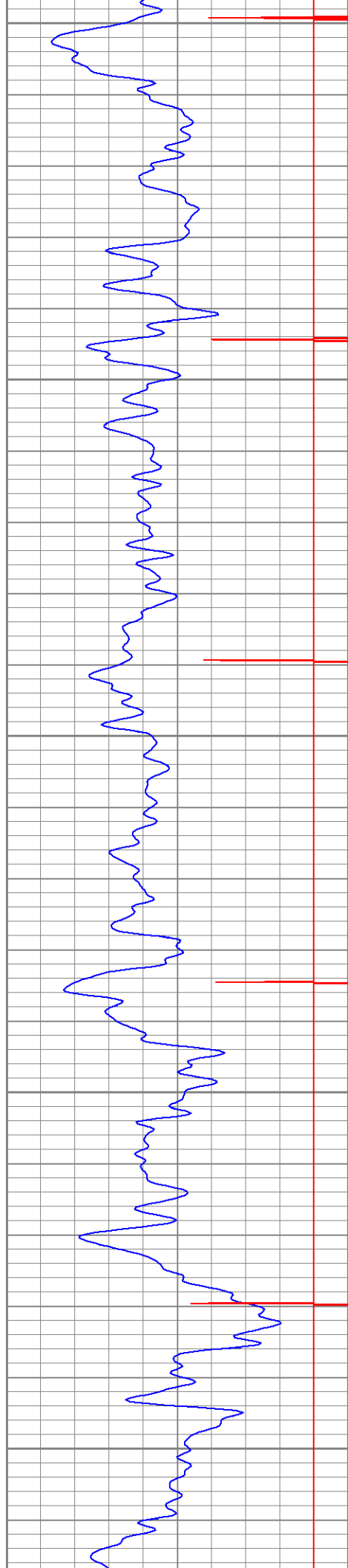
1350

1400

1450







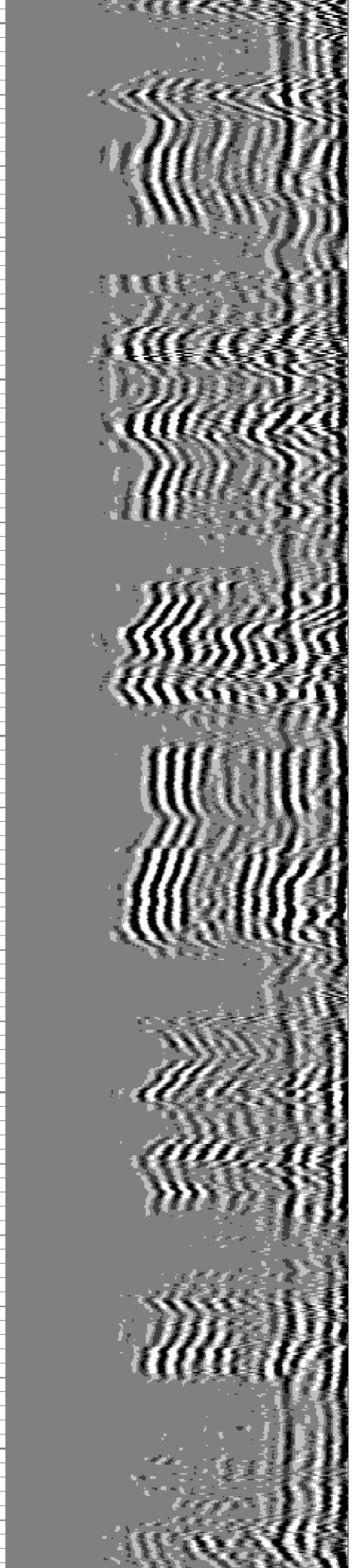
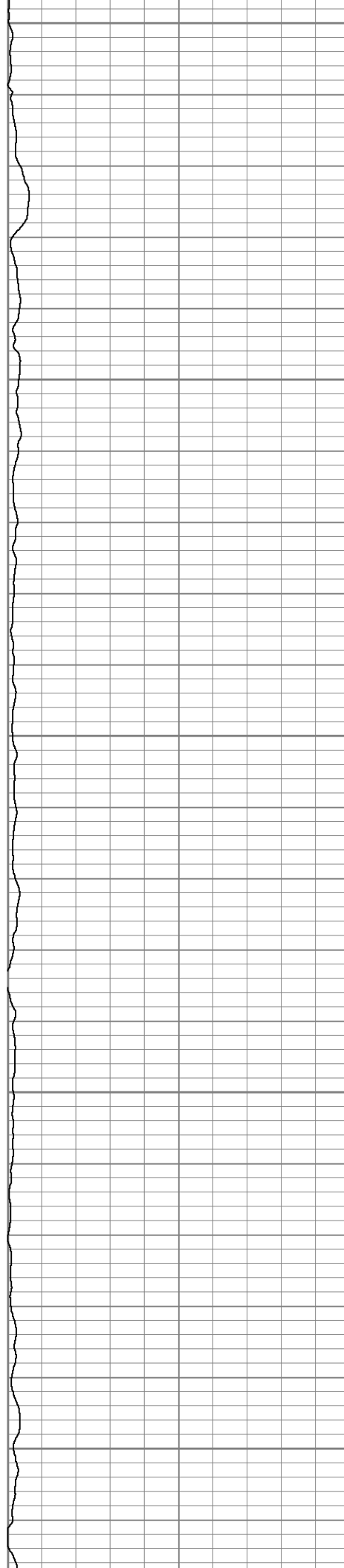
1500

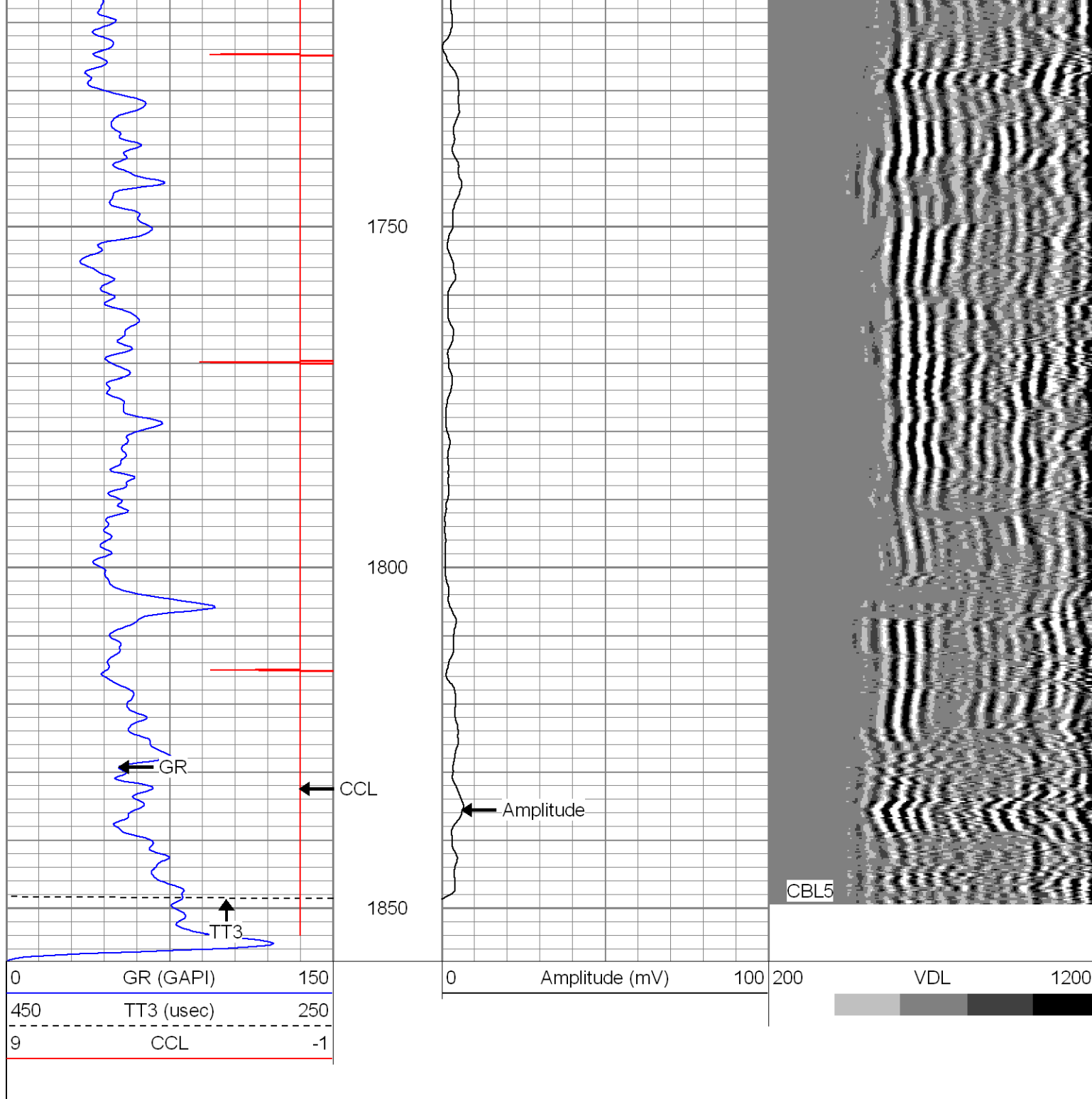
1550

1600

1650

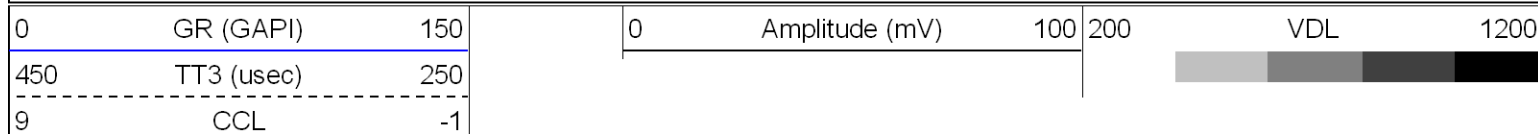
1700

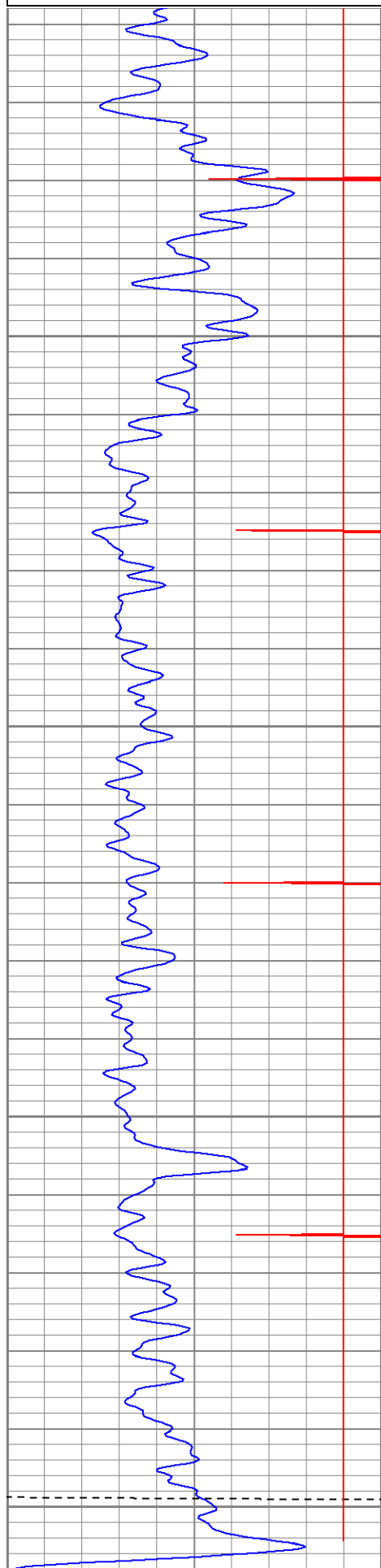




# Repeat Pass

Database File: ge30-02cbl.db  
 Dataset Pathname: pass4.1  
 Presentation Format: cblrt  
 Dataset Creation: Thu Jun 23 17:31:16 2011 by Calc Open-Cased 090629  
 Charted by: Depth in Feet scaled 1:240





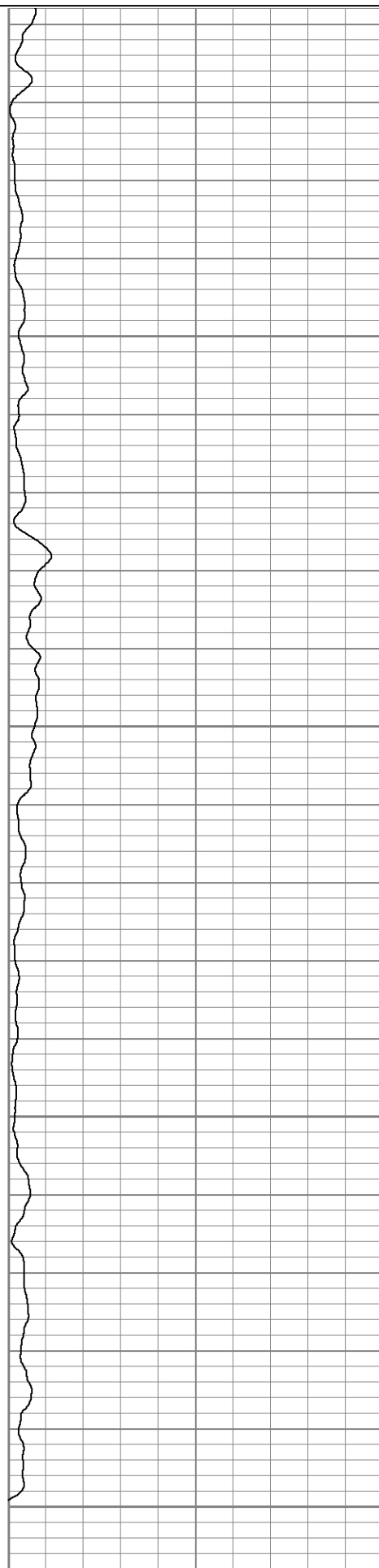
0 GR (GAPI) 150  
450 TT3 (usec) 250  
9 CCI 1

1700

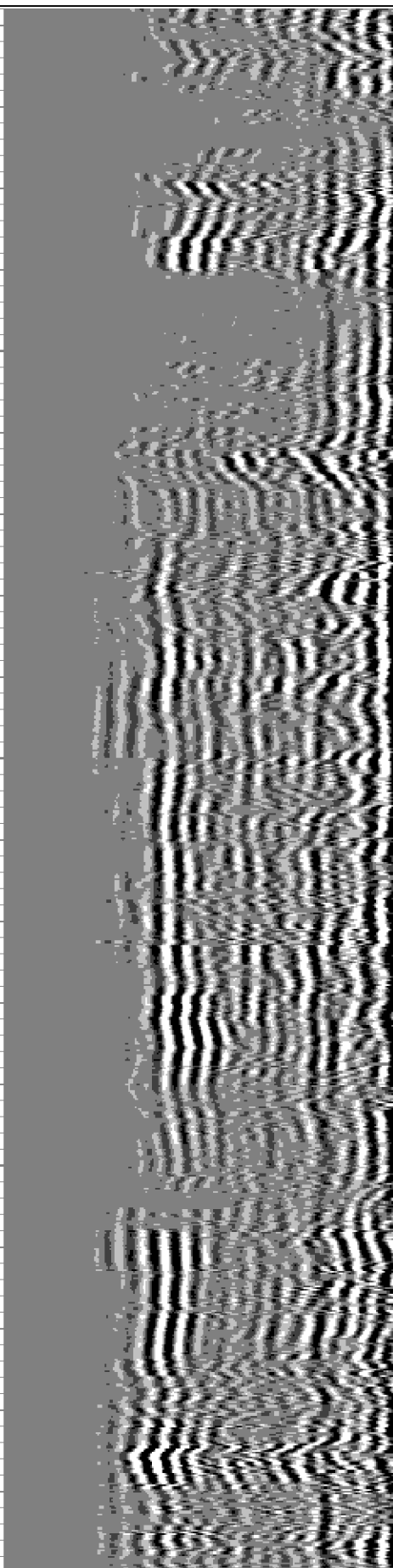
1750

1800

1850



0 Amplitude (mV) 100



200 VDL 1200



### Calibration Report

Database File: ge30-02cbl.db  
 Dataset Pathname: pass4.1  
 Dataset Creation: Thu Jun 23 17:31:16 2011 by Calc Open-Cased 090629

### Gamma Ray Calibration Report

Serial Number: 080902  
 Tool Model: 275D\_INC  
 Performed: Thu Jun 23 16:56:13 2011

Calibrator Value: 1.0 GAPI

Background Reading: 0.0 cps  
 Calibrator Reading: 1.0 cps

Sensitivity: 0.8000 GAPI/cps

### Inclinometer Calibration Report

Performed: Sun Jun 13 13:33:21 1993

	Low Read.	High Read.	Low Ref.	High Ref.	
X Accelerometer	0.00	1.00	0.00	1.00	gee
Y Accelerometer	0.00	1.00	0.00	1.00	gee
Z Accelerometer					

### Cement Bond Log Calibration Report


Serial Number: 030407  
 Tool Model: Probe275Digital  
 Performed: Thu Jun 23 16:53:28 2011

Depth: -0.0666667 ft  
 Casing Diameter: 5.5 in

3' Spacing      5' Spacing

Signal Zero: 1      1      mV  
 Calibrated Amplitude: 71.921      71.921      mV  
 Reading at Signal Zero: 0.02      0.02      V  
 Reading in Free Pipe: 0.63      2.34233      V

Gain: 116.264      30.5387  
 Offset: -1.32528      0.389225

Sensor	Offset (ft)	Schematic	Description	Len (ft)	OD (in)	Wt (lb)
			star	0.67	1.69	1.00

