



CEMENT BOND LOG

Mesa Wireline

Company	ENCANA OIL & GAS (USA) INC.		
Well	KENYON 8-8-19		
Field	WATTENBERG		
County	WELD		
State	CO		
Company ENCANA OIL & GAS (USA) INC.		Other Services	
Well KENYON 8-8-19		NONE	
Field WATTENBERG			
County WELD		State CO	
Location:		API #: 05123327520000	
SEC. 19 TWP. 2N RGE. 68W		Elevation	
Permanent Datum GROUND LEVEL		K.B. 5000'	
Log Measured From KELLY BUSHING = 12'		D.F. 5004'	
Drilling Measured From KELLY BUSHING		G.L. 4993'	

Date	8 MAR 2011						
Run Number	ONE						
Depth Driller	8393'						
Depth Logger	8334'						
Bottom Logged Interval	8334'						
Top Log Interval	3500'						
Open Hole Size	7.875"						
Type Fluid	WATER						
Density / Viscosity	~8.3#						
Max. Recorded Temp.	N/A						
Estimated Cement Top	3764'						
Time Well Ready	N/A						
Time Logger on Bottom	1030						
Equipment Number	061/ CB 01						
Location	AULT						
Recorded By	M. BERNATCHEZ						
Witnessed By	W. HARRISON						
Borehole Record					Tubing Record		
Run Number	Bit	From	To	Size	Weight	From	To
ONE	12.25"	SURFACE	800'				
TWO	7.875"	800'	8378'				
Casing Record	Size	Weight	Top	Bottom			
Surface String	4.5"	11.6#	SURFACE	8378'			
Prot. String							
Production String							
Liner							

<<< Fold Here >>>

All interpretations are opinions based on inferences from electrical or other measurements and we cannot and do not guarantee the accuracy or correctness of any interpretation, and we shall not, except in the case of gross or willful negligence on our part, be liable or responsible for any loss, costs, damages, or expenses incurred or sustained by anyone resulting from any interpretation made by any of our officers, agents or employees. These interpretations are also subject to our general terms and conditions set out in our current Price Schedule.

Comments

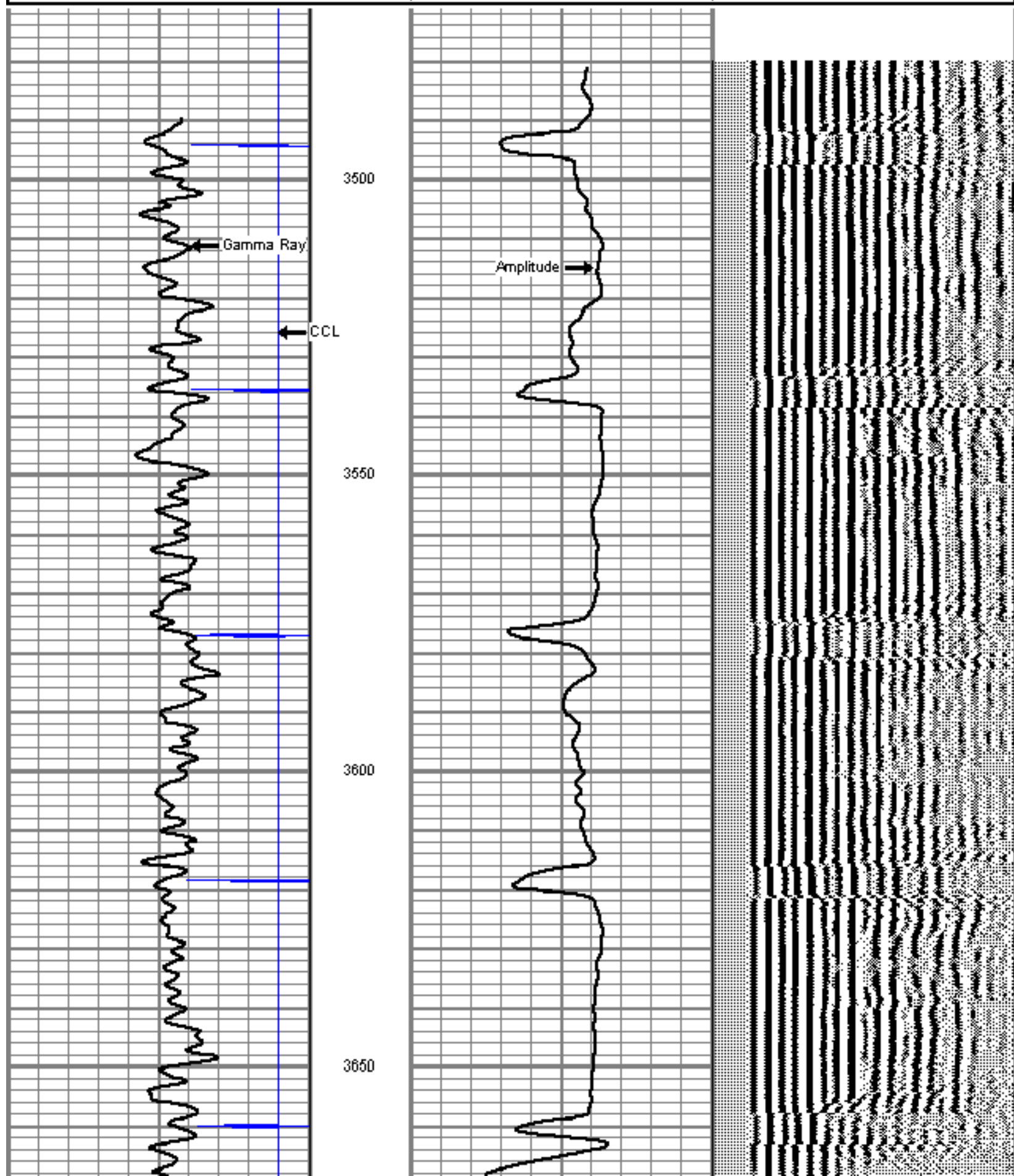
CORRELATED TO PSI LOG DATED FEBRUARY 6, 2011
SHORT JOINT: 7378'- 7400'

WE APPRECIATE YOUR BUSINESS, MESA WIRELINE LLC, GRAND JUNCTION CO. (970) 257-0

9	Collar Locator	-1
0	Gamma Ray (GAPI)	150

0	Amplified Amplitude (mV)	10
0	Amplitude (mV)	100
200	Travel Time (usec)	280

200	Variable Density	1200
-----	------------------	------



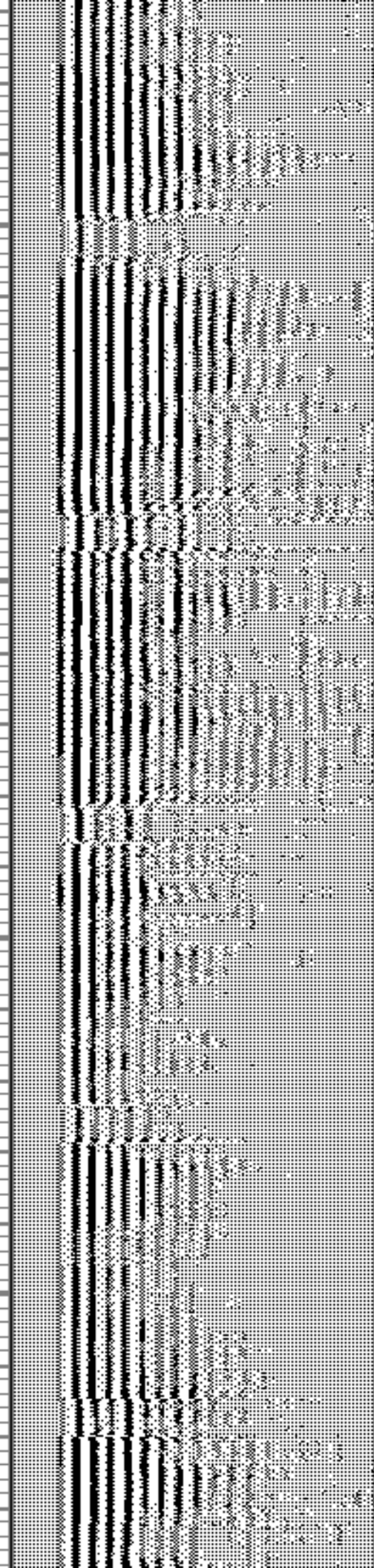
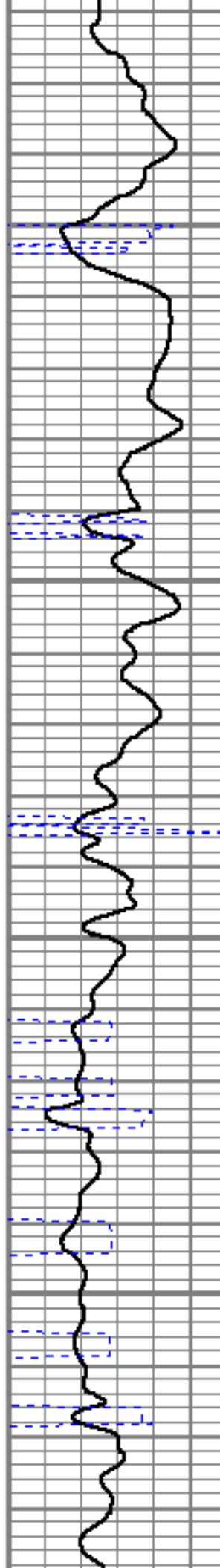


3700

3750

3800

3850





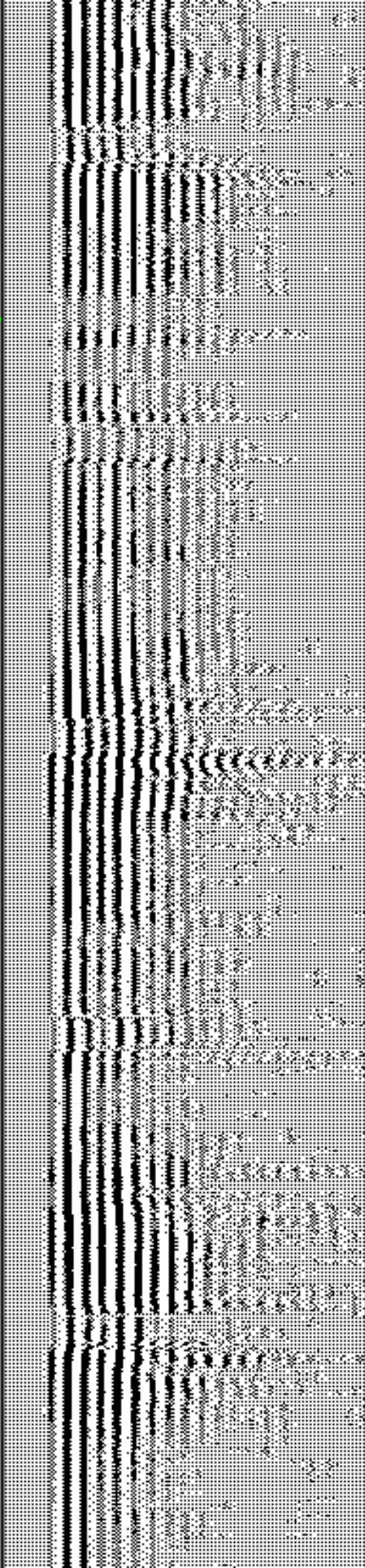
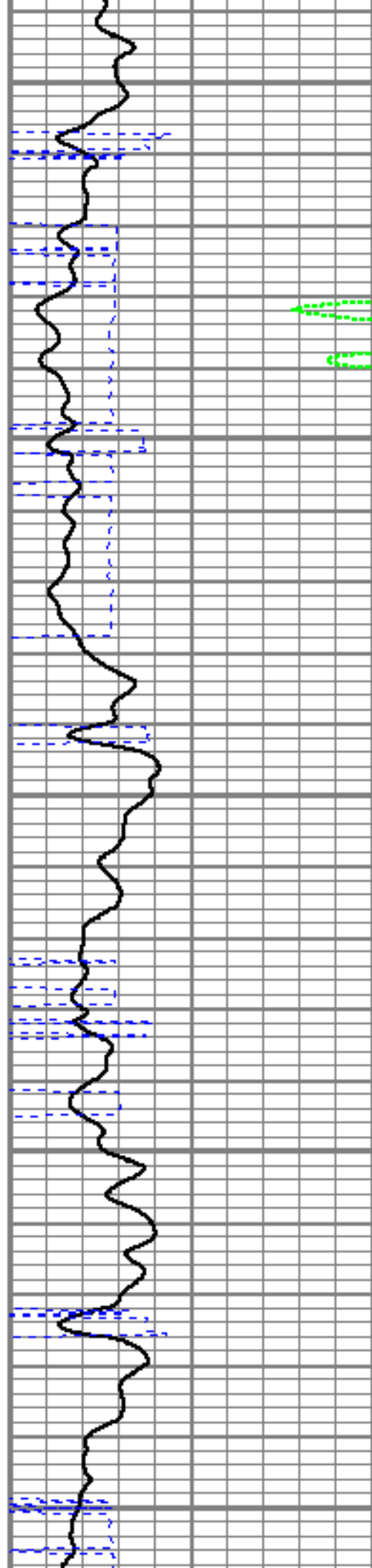
3900

3950

4000

4050

4100



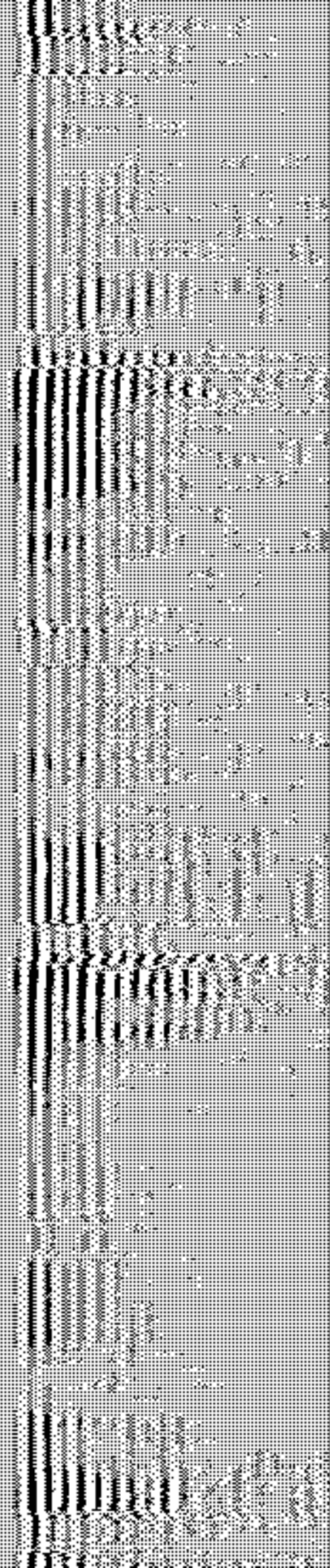
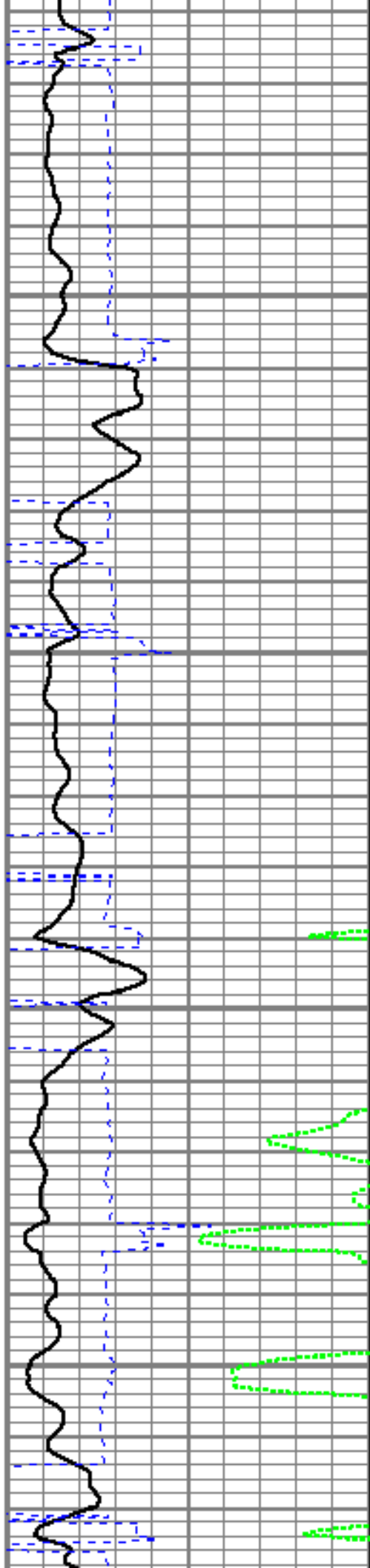


4150

4200

4250

4300



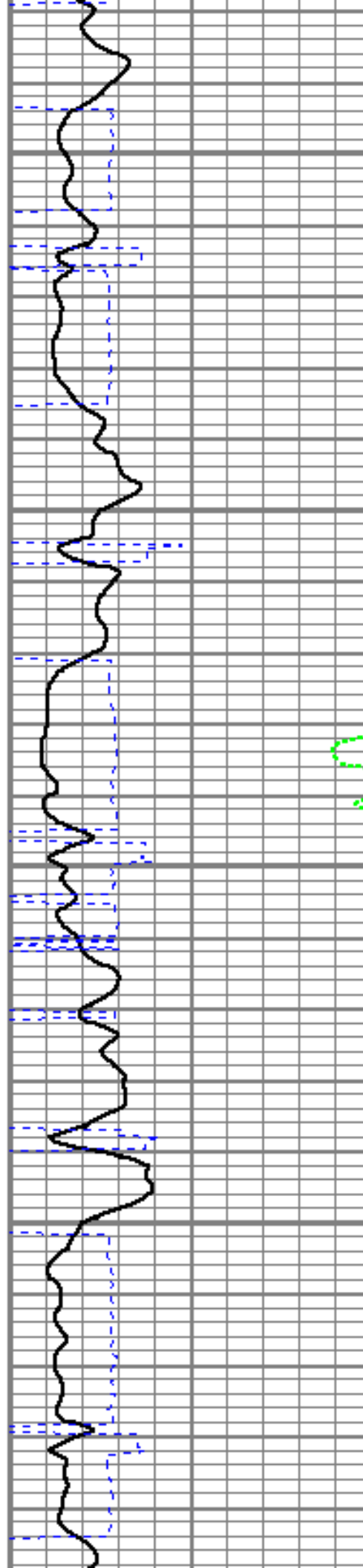


4350

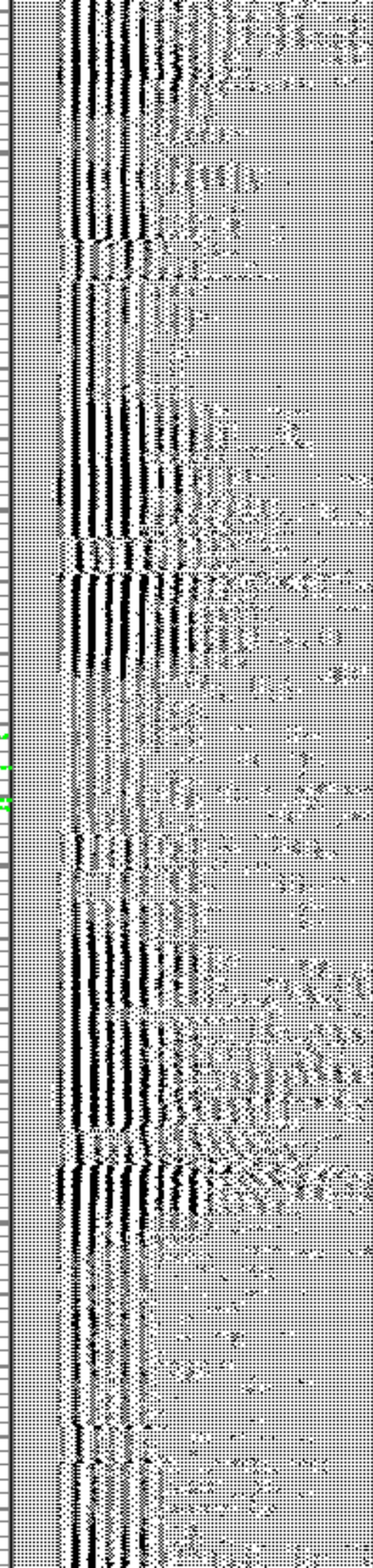
4400

4450

4500



0.0





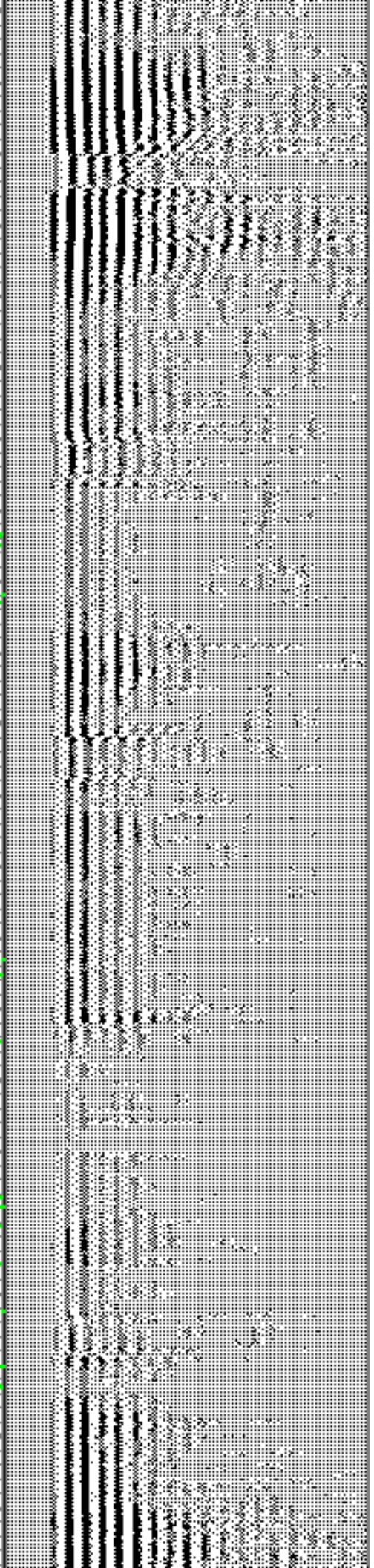
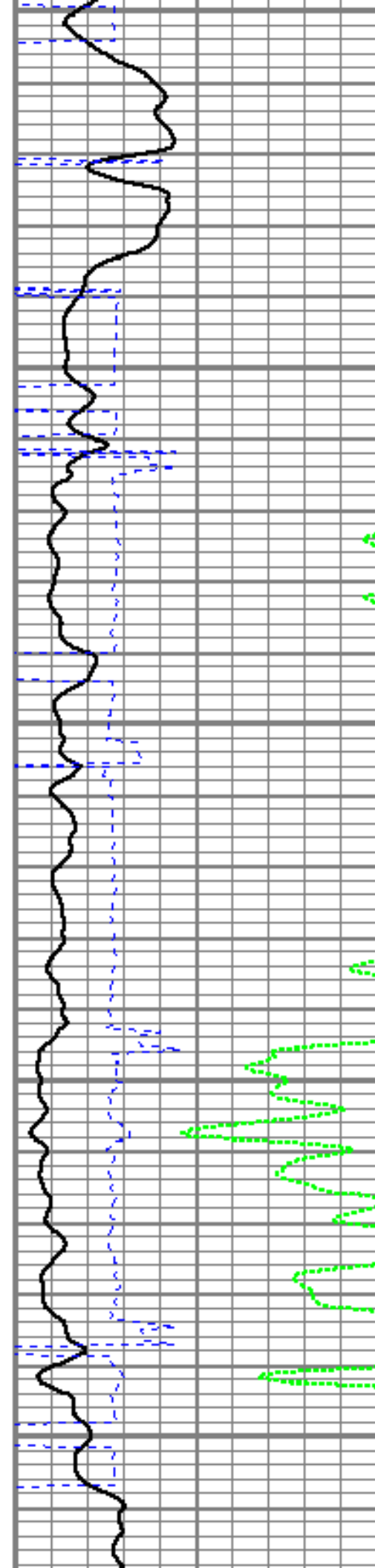
4550

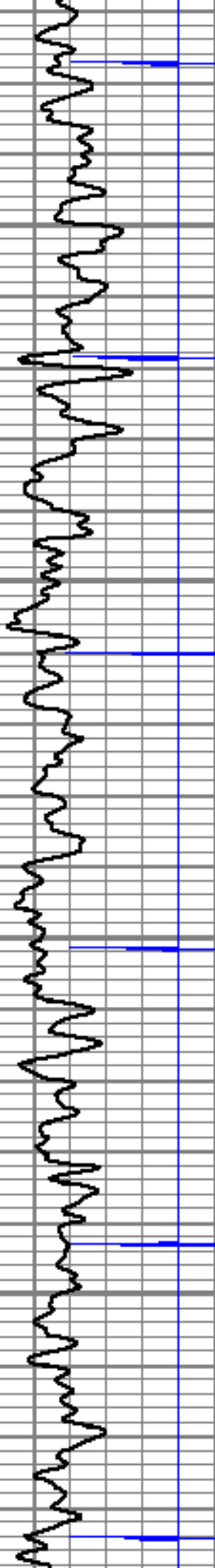
4600

4650

4700

4750



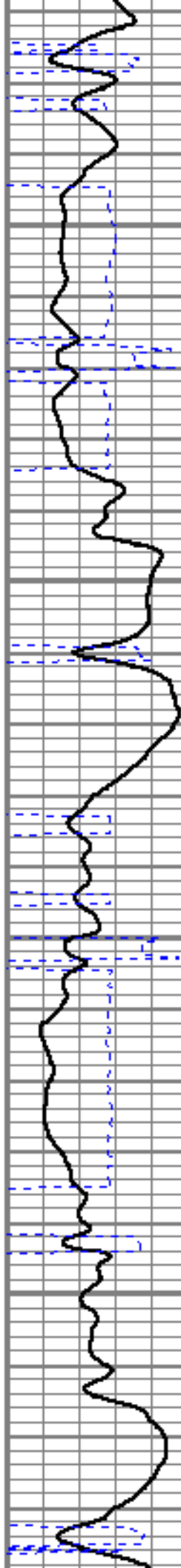


4800

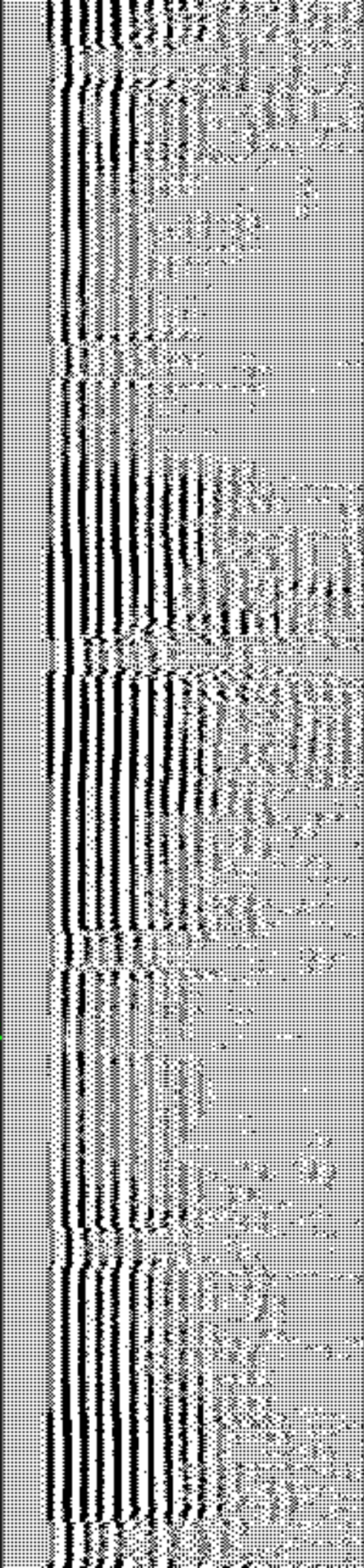
4850

4900

4950



4900





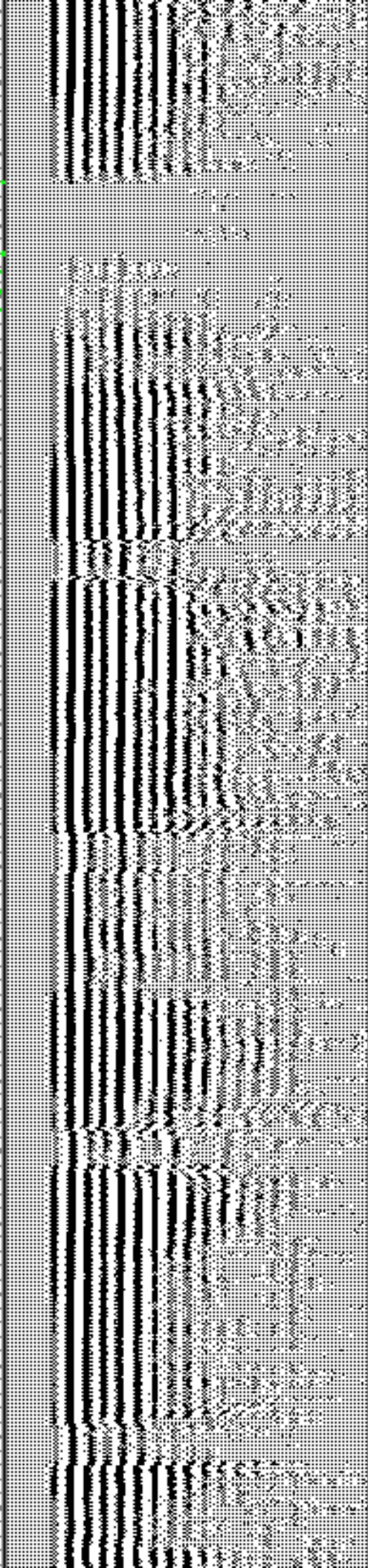
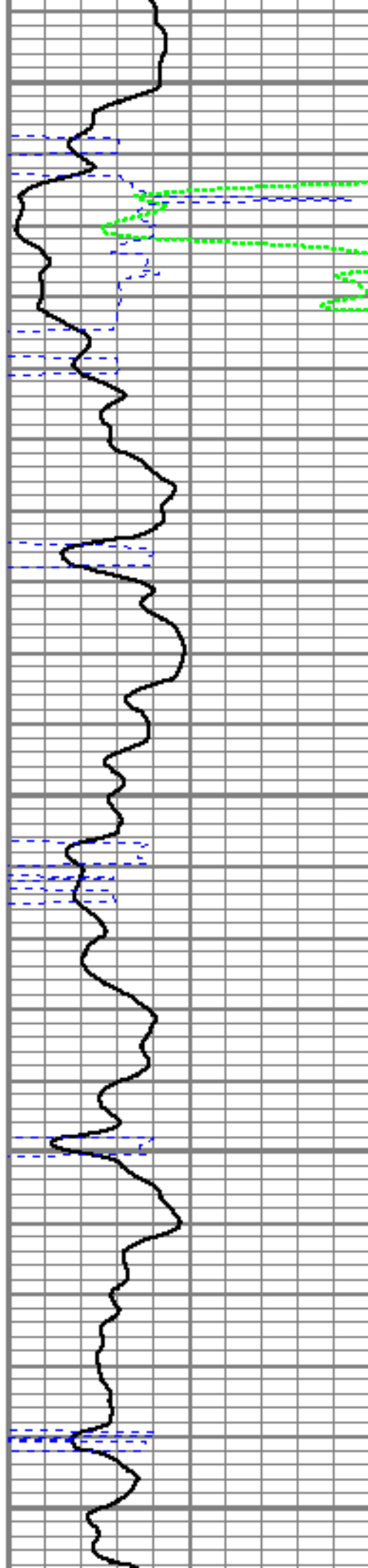
5000

5050

5100

5150

5200



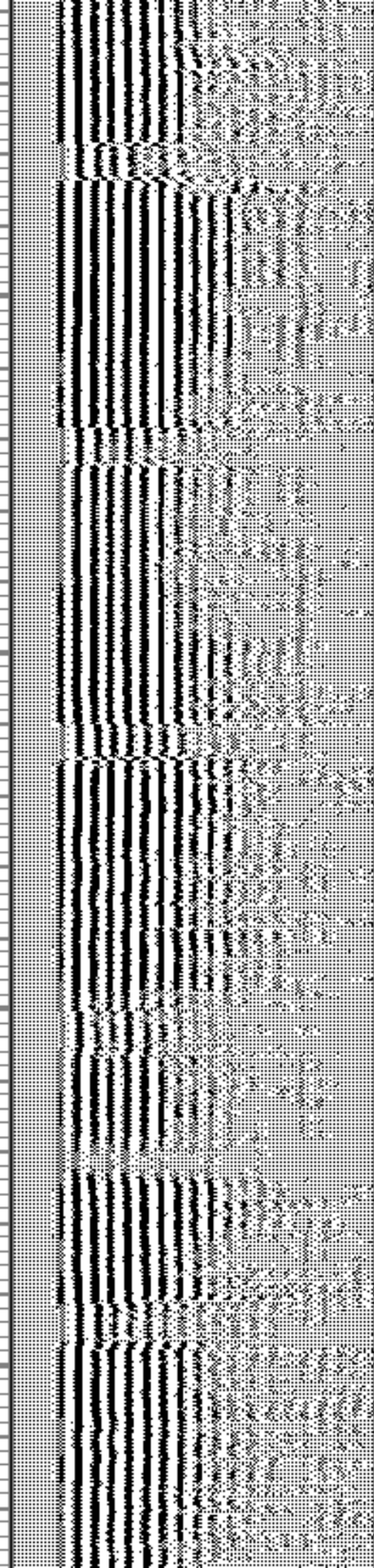
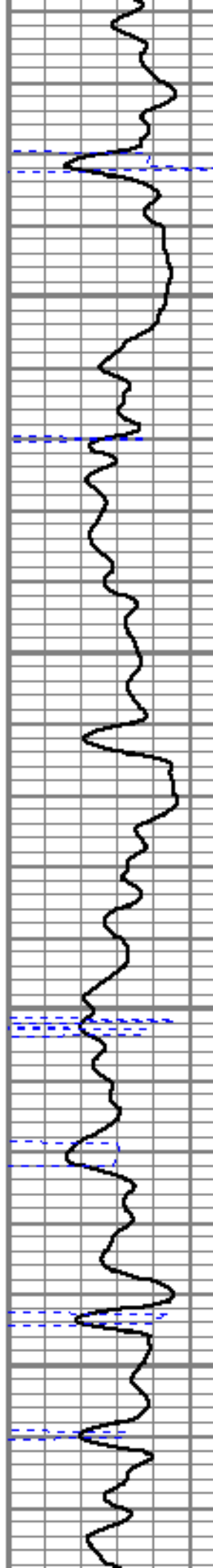


5250

5300

5350

5400



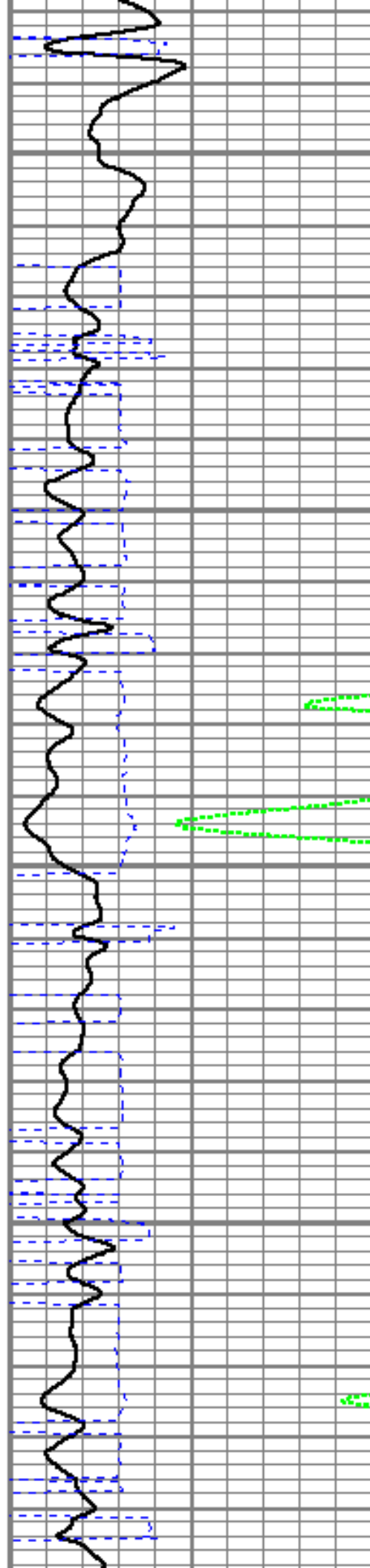


5450

5500

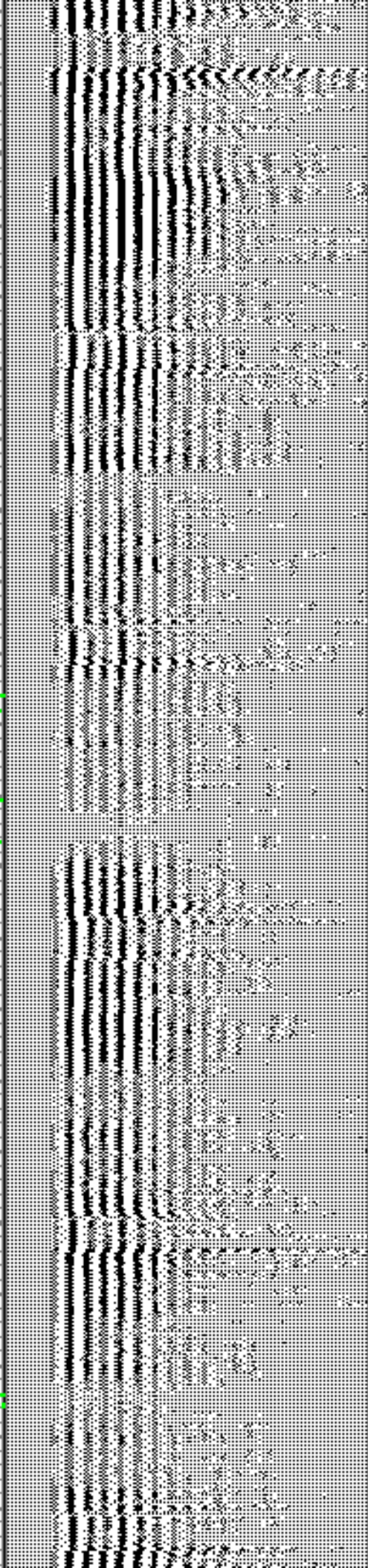
5550

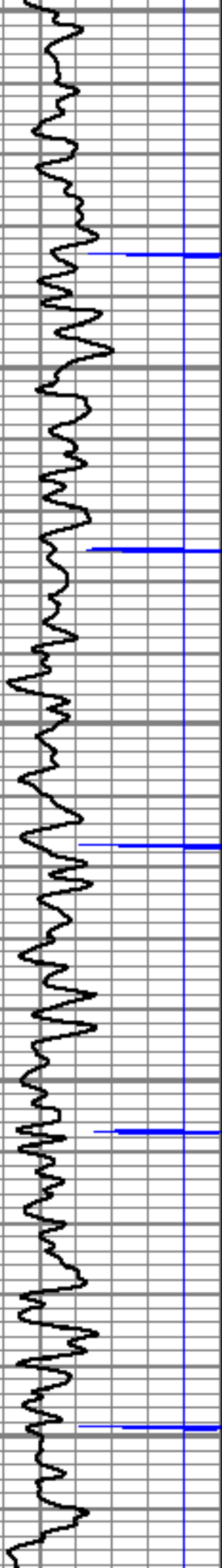
5600



5550

5600





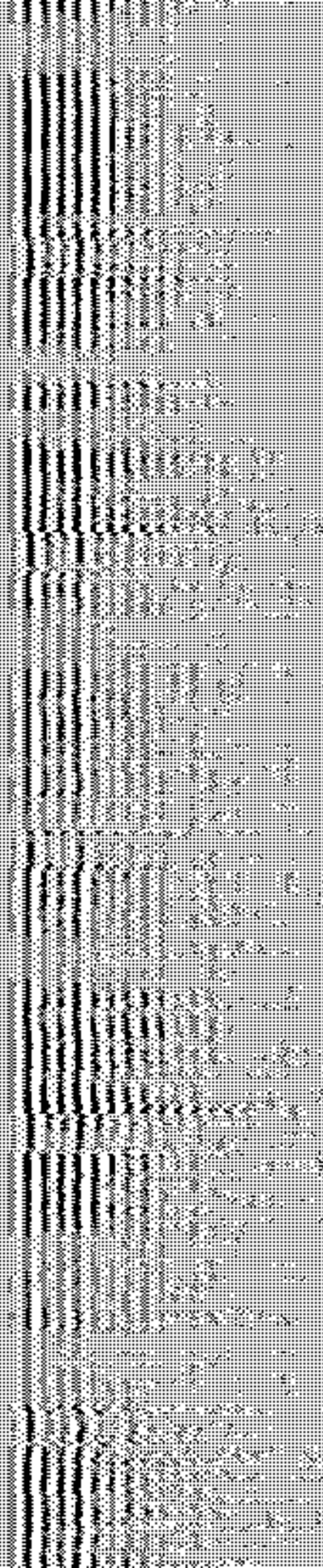
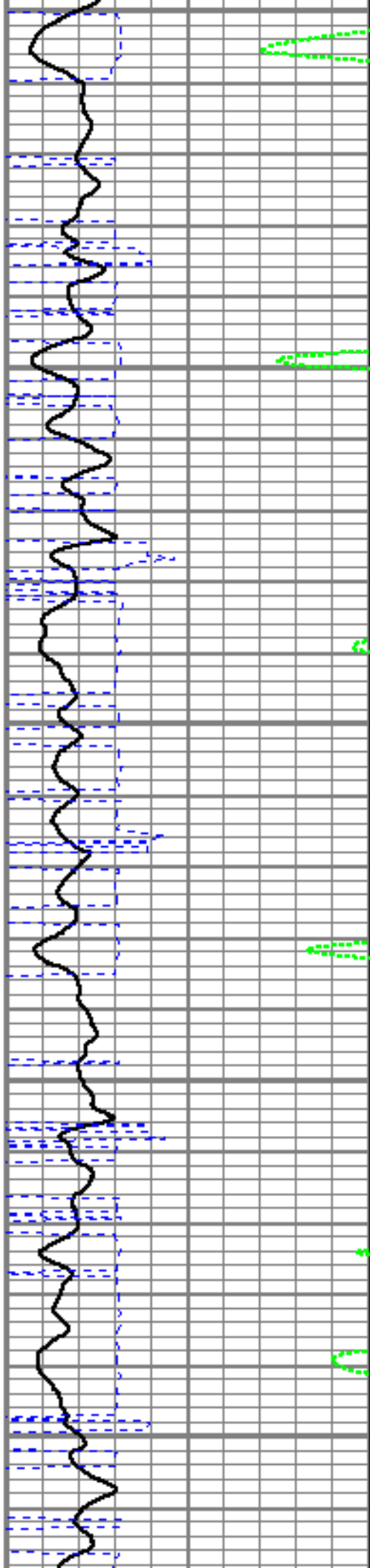
5650

5700

5750

5800

5850



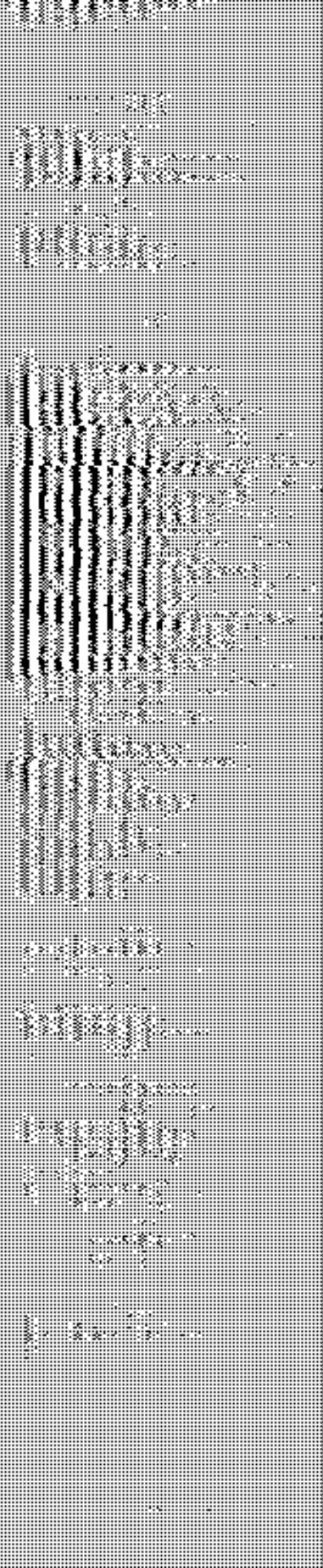
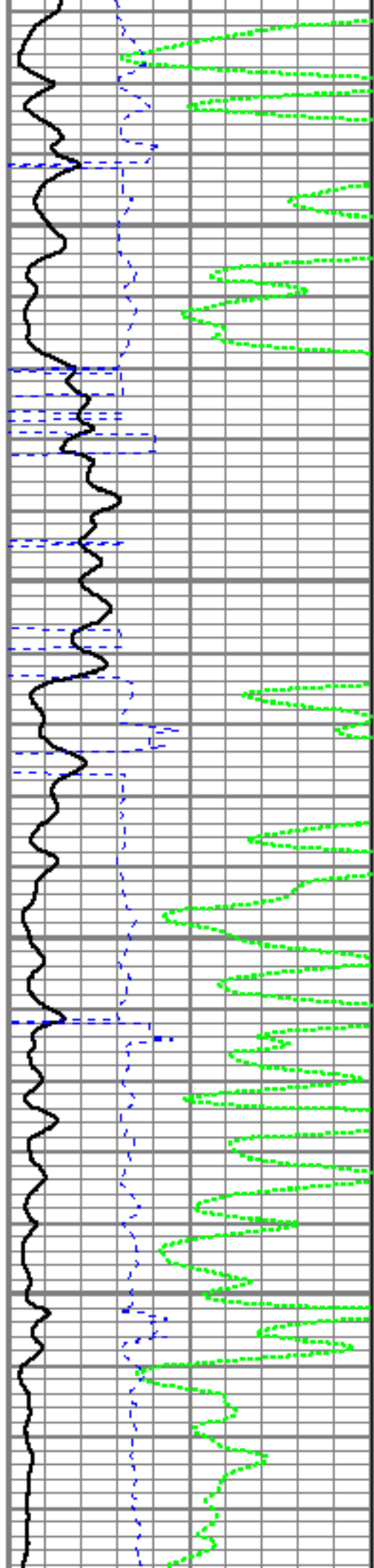


5900

5950

6000

6050





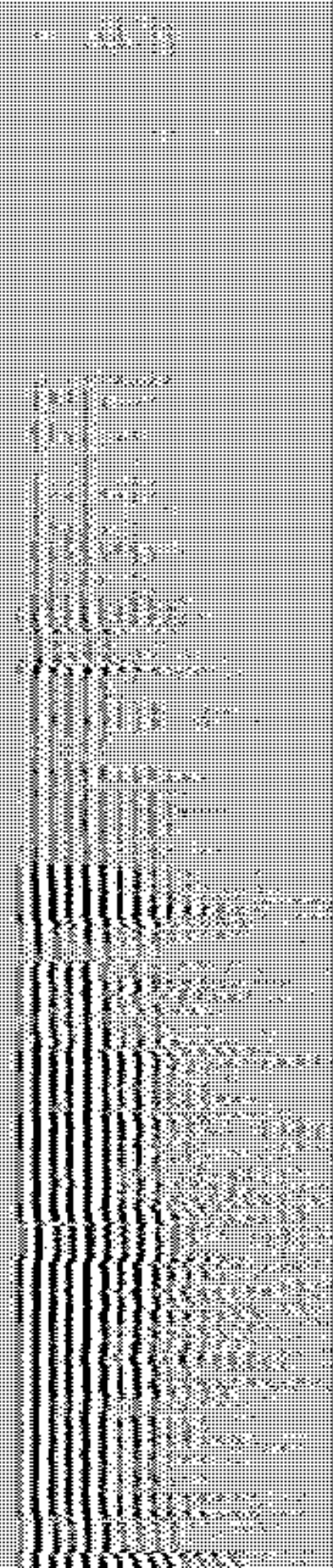
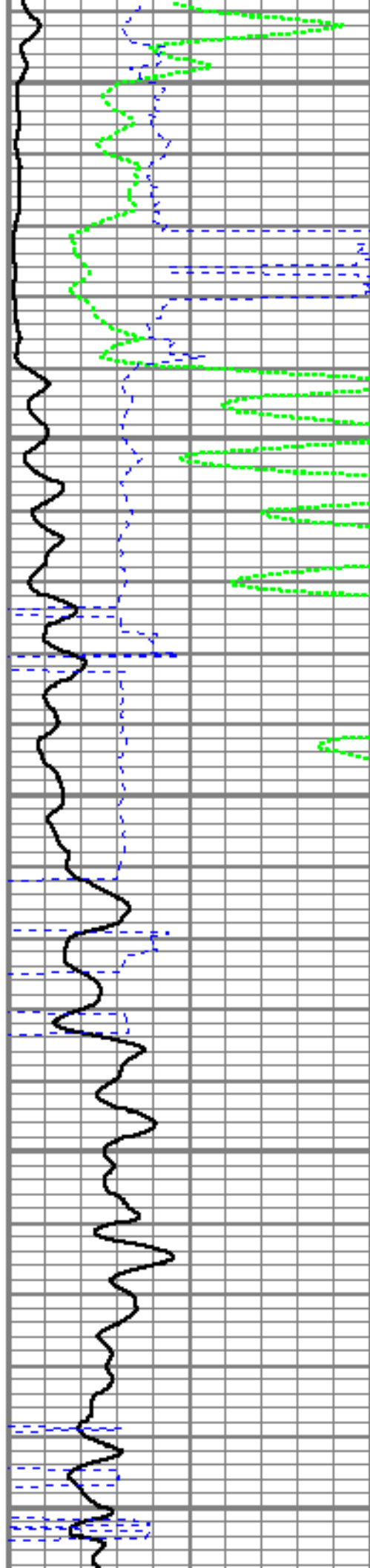
6100

6150

6200

6250

6300



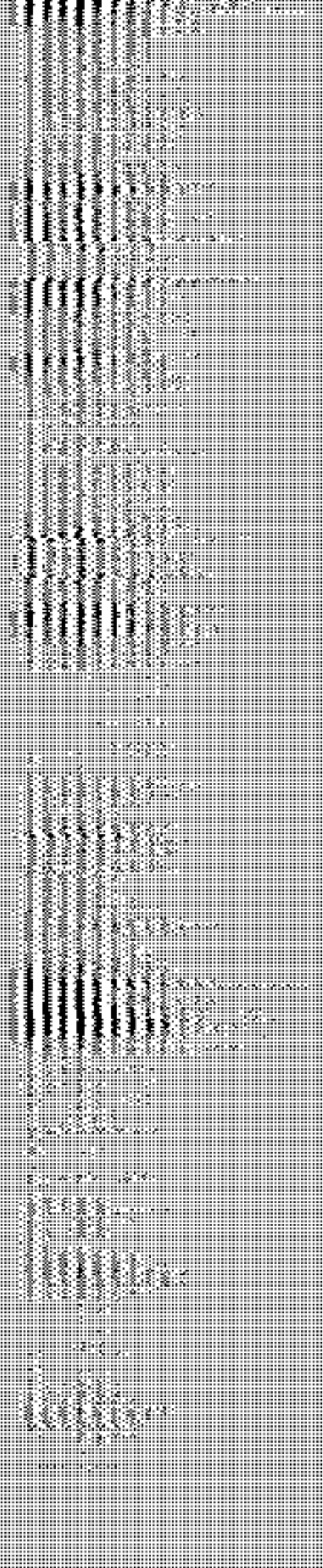
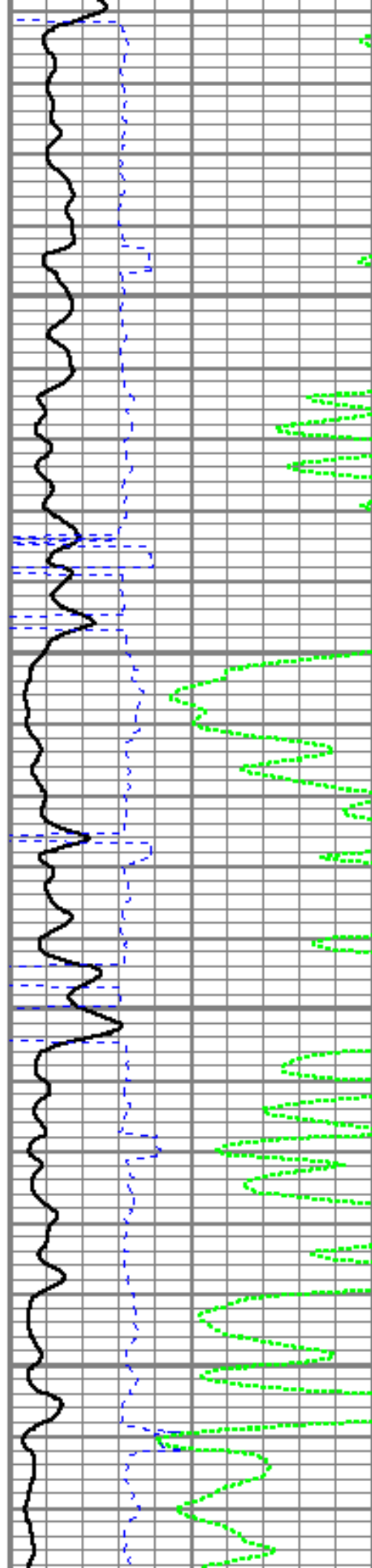


6350

6400

6450

6500



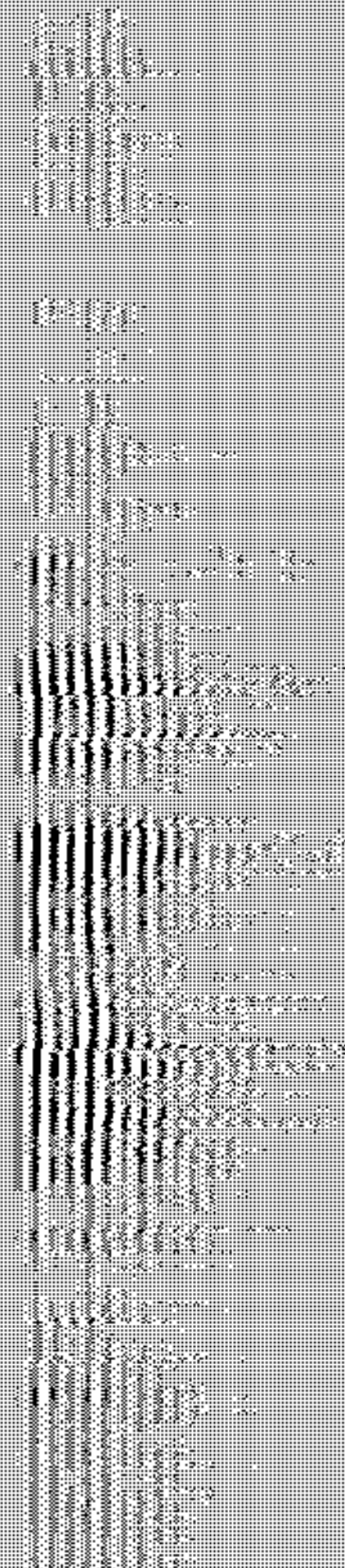
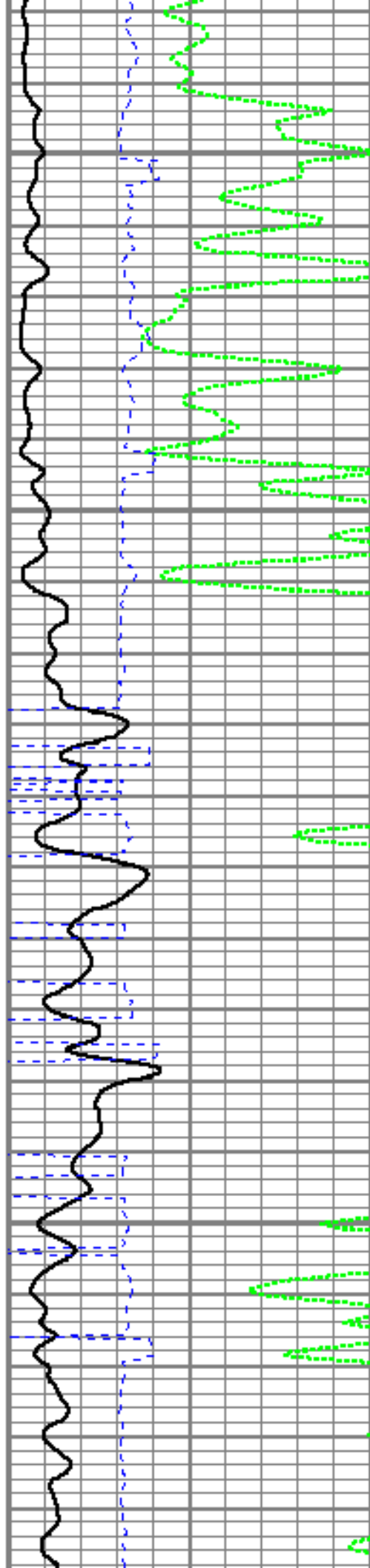


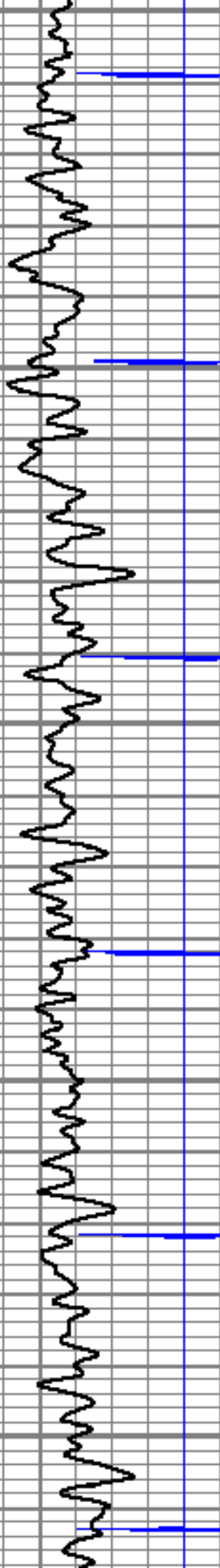
6550

6600

6650

6700





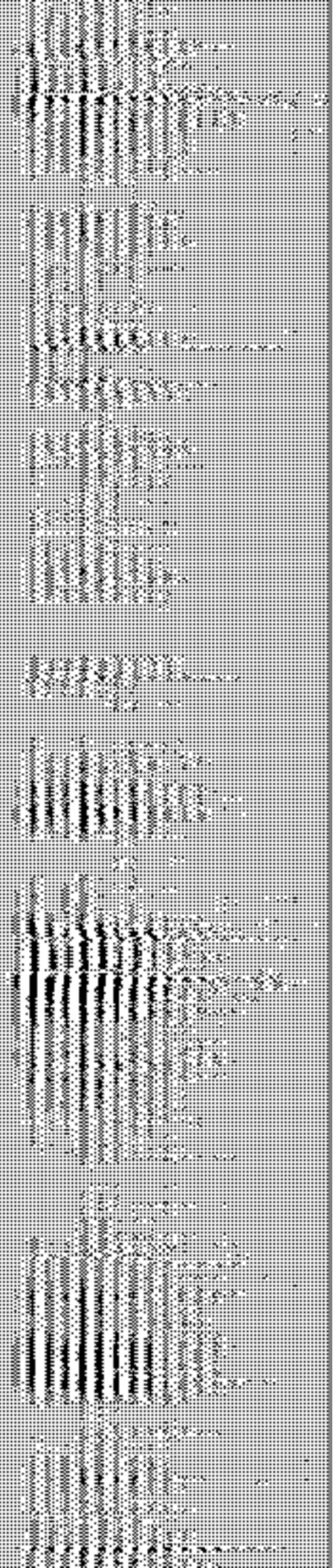
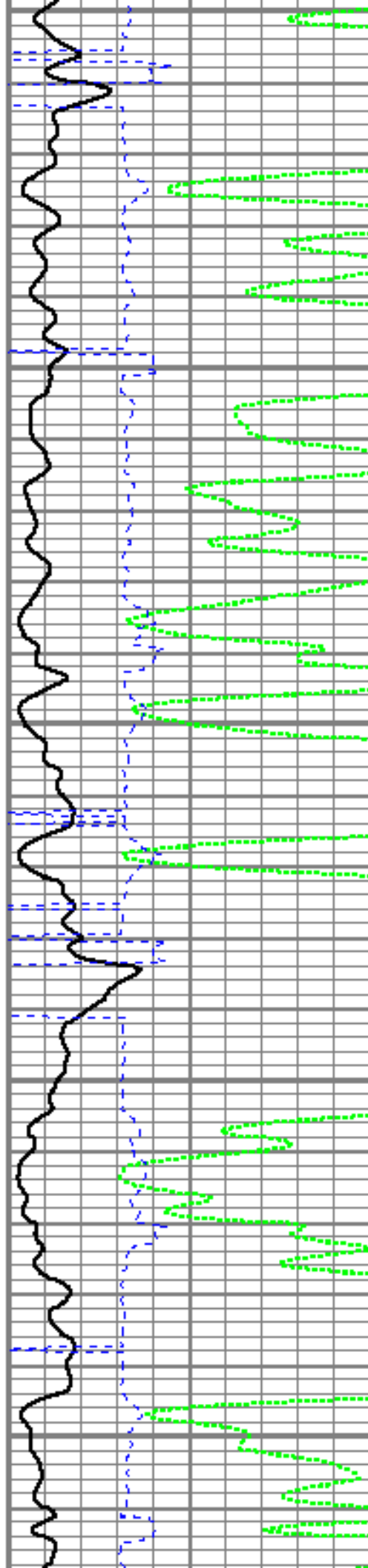
6750

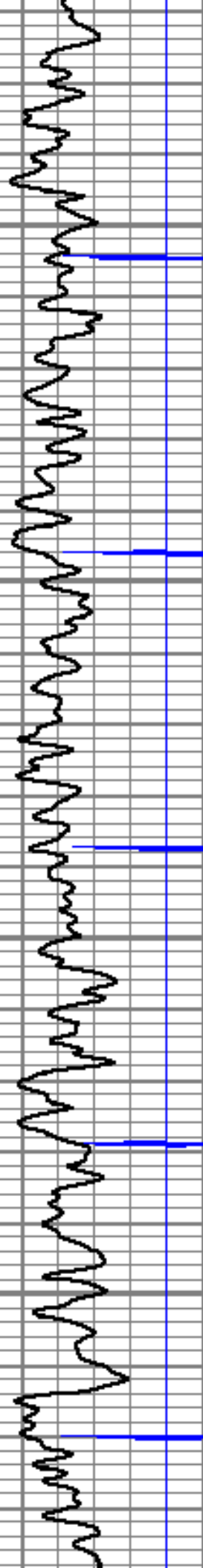
6800

6850

6900

6950



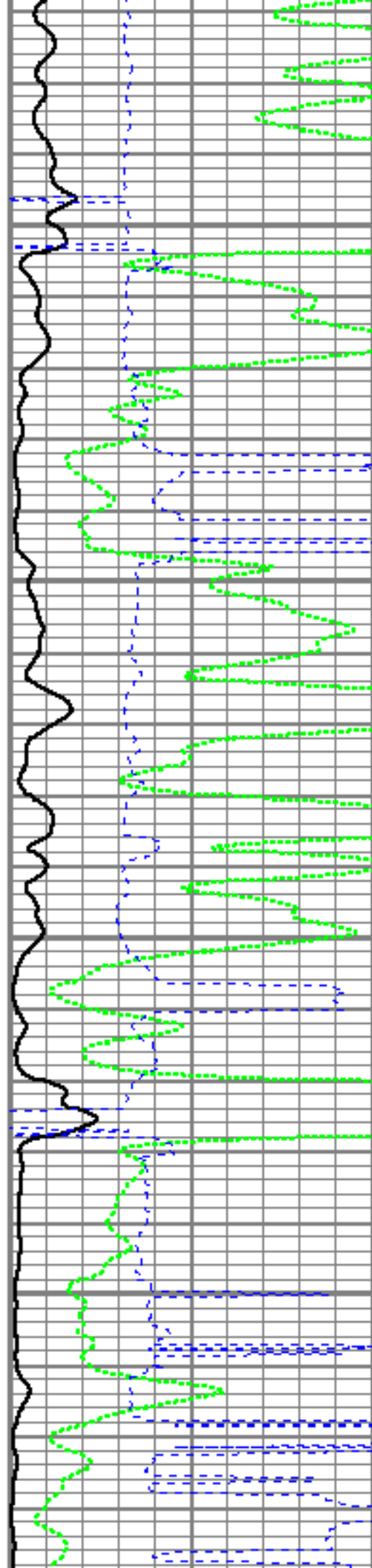


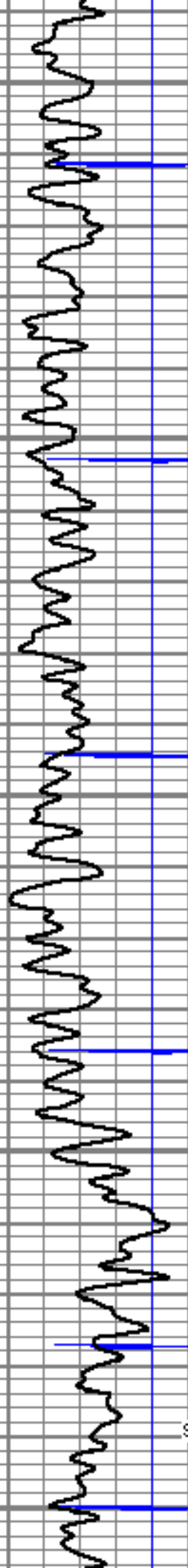
7000

7050

7100

7150





7200

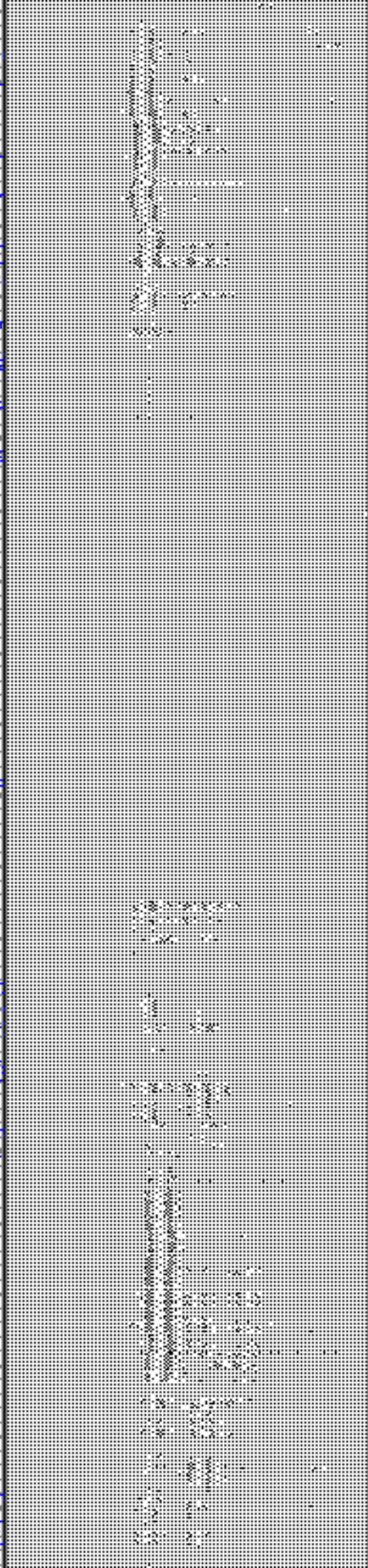
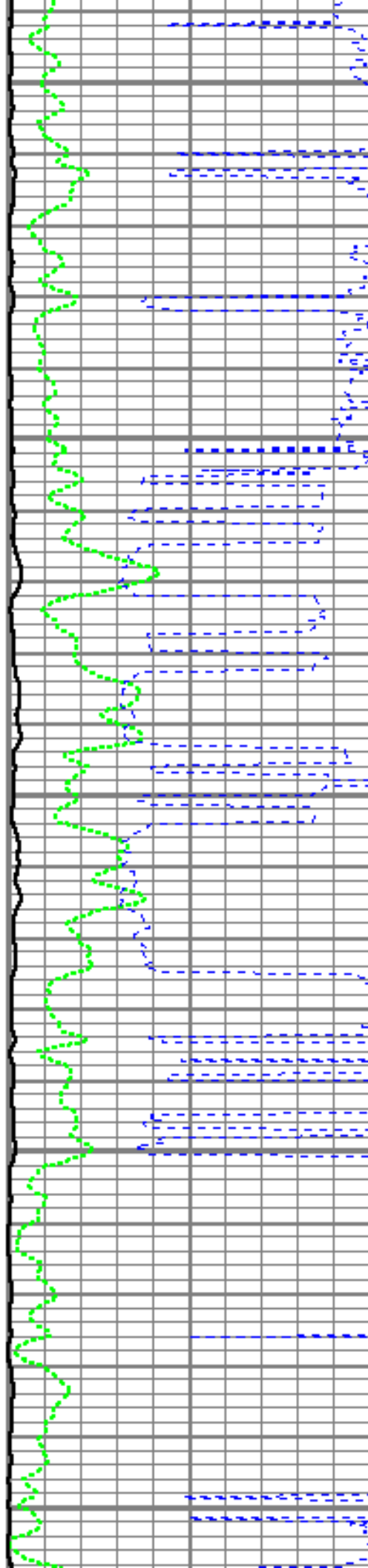
7250

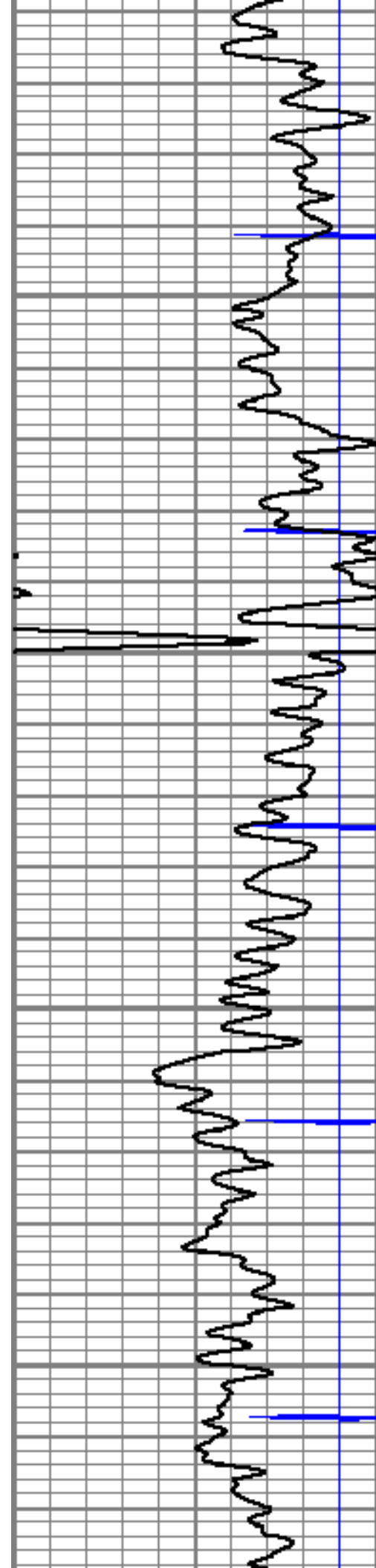
7300

7350

SHORT JOINT

7400



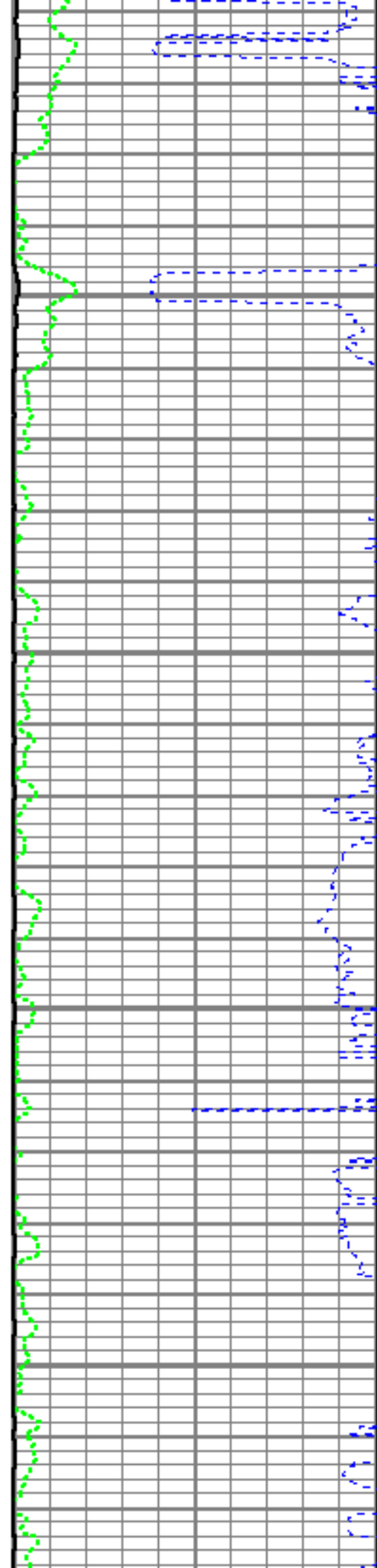


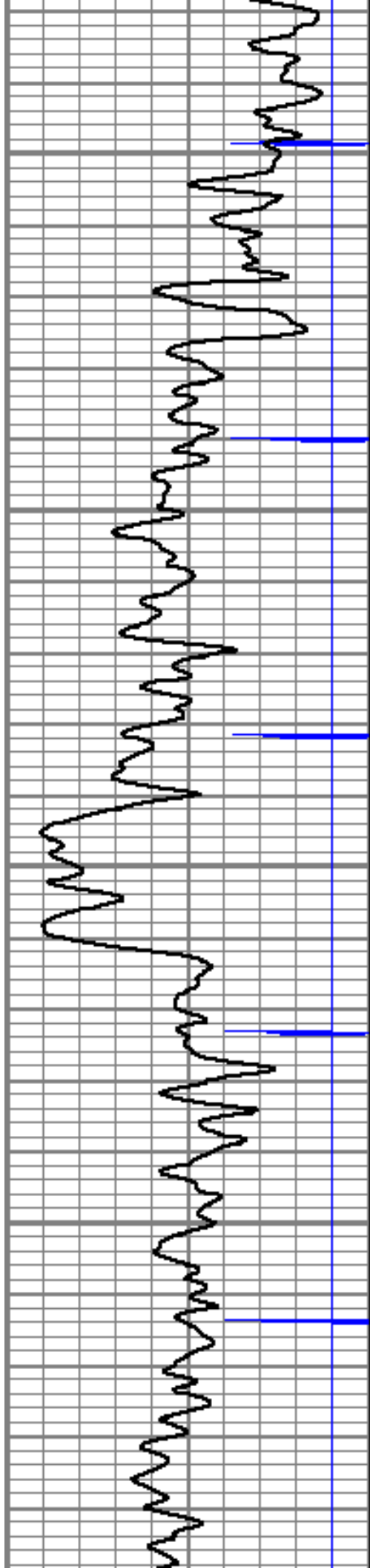
7450

7500

7550

7600



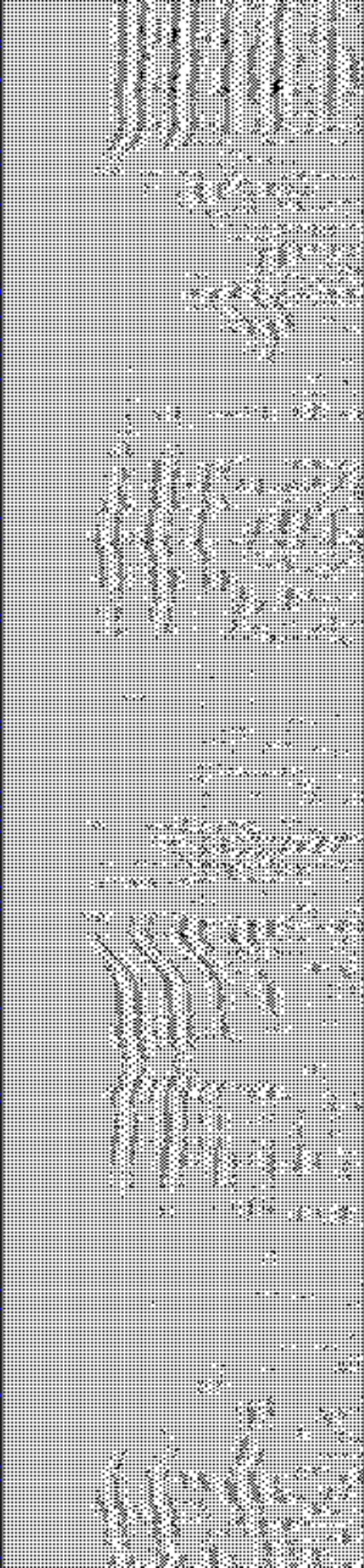
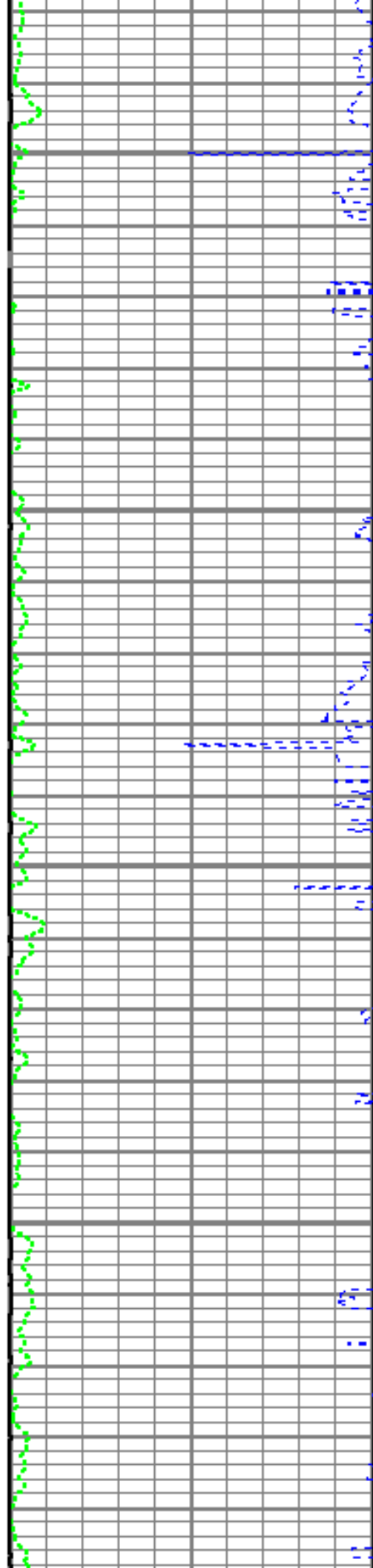


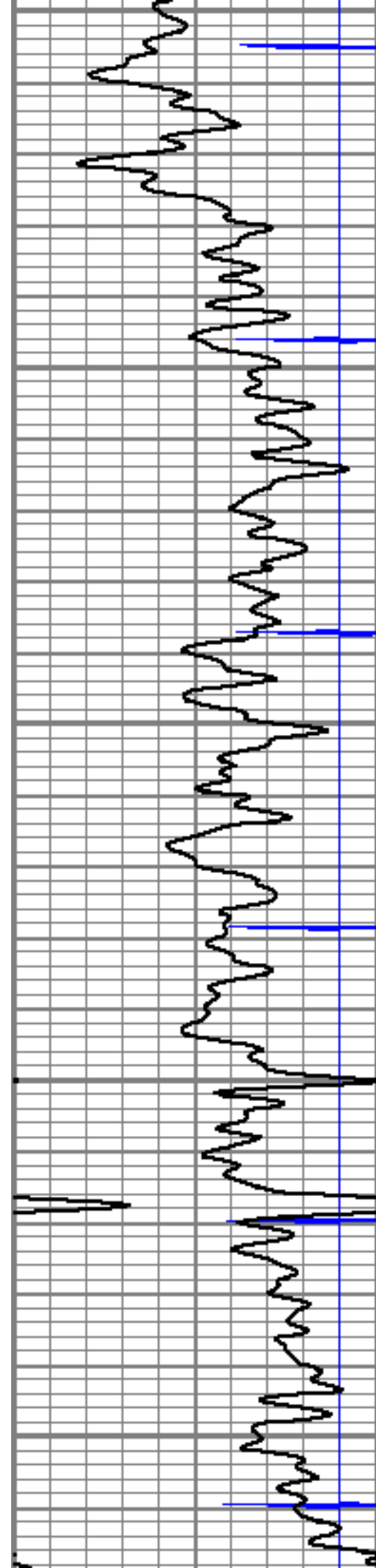
7650

7700

7750

7800





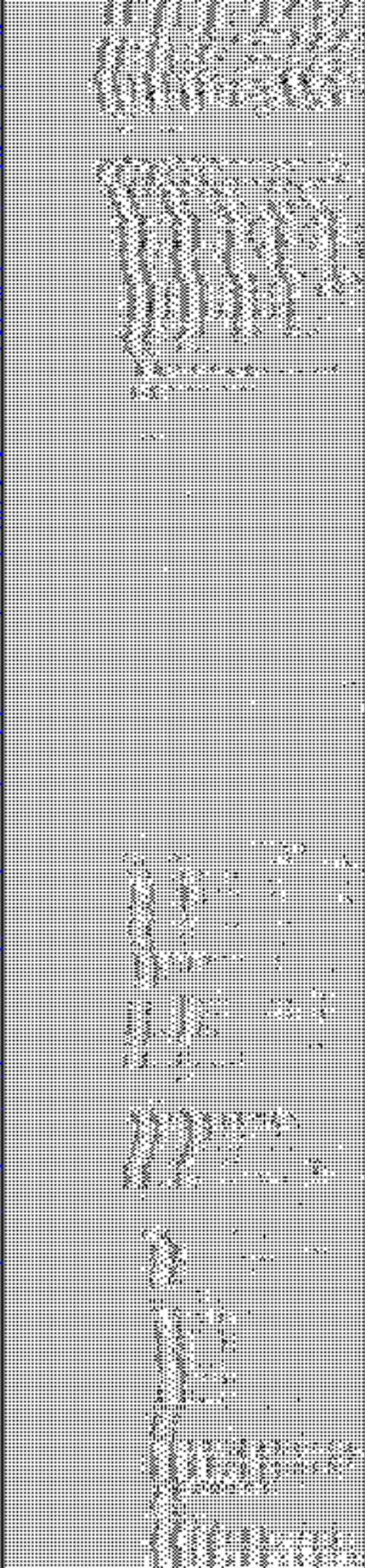
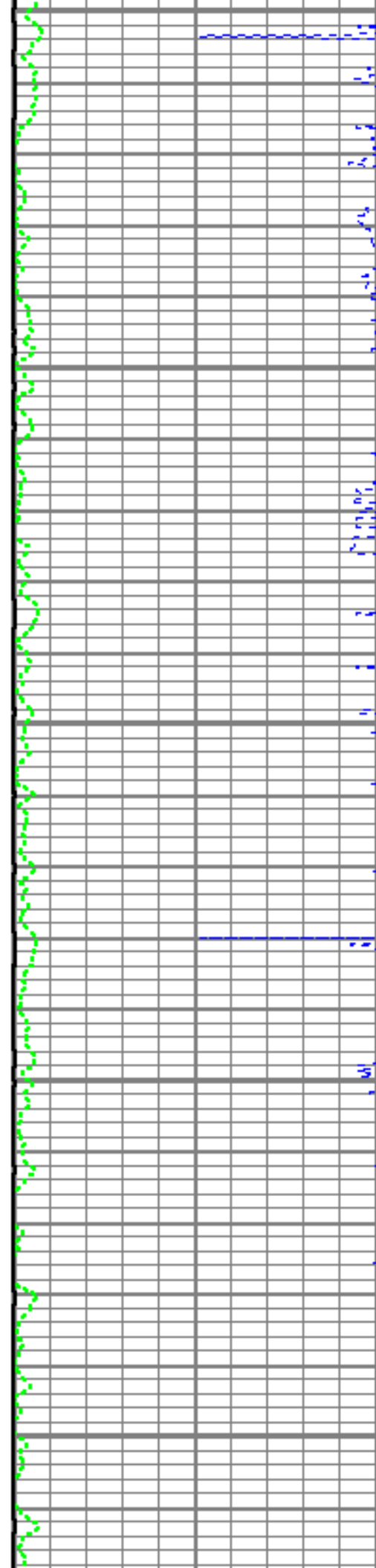
7850

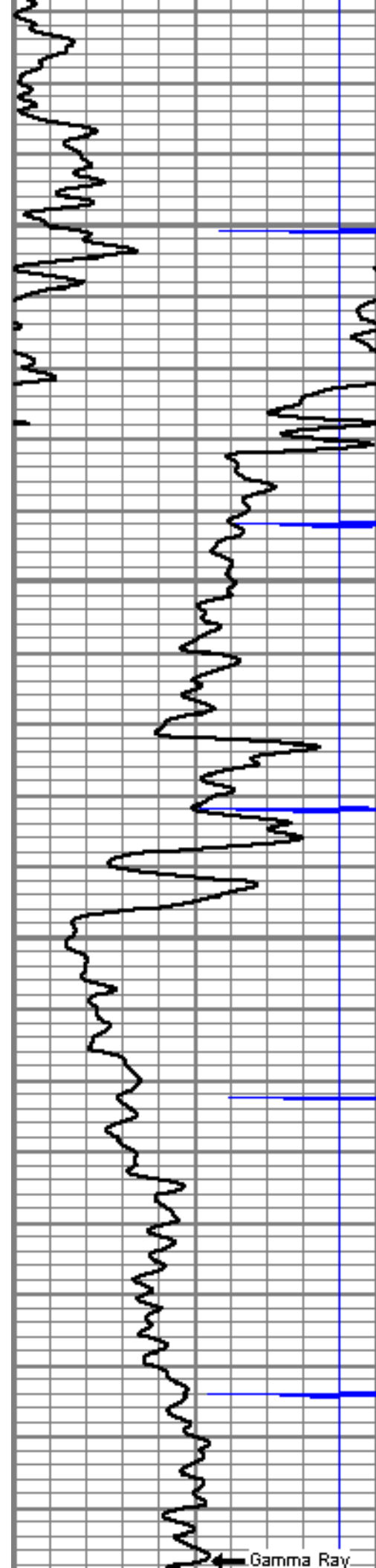
7900

7950

8000

8050





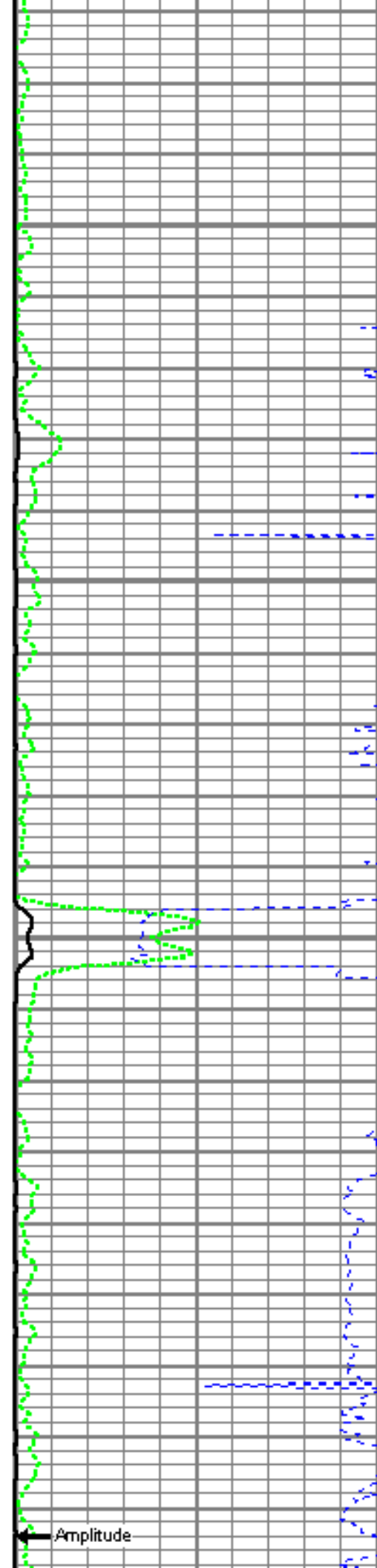
8100

8150

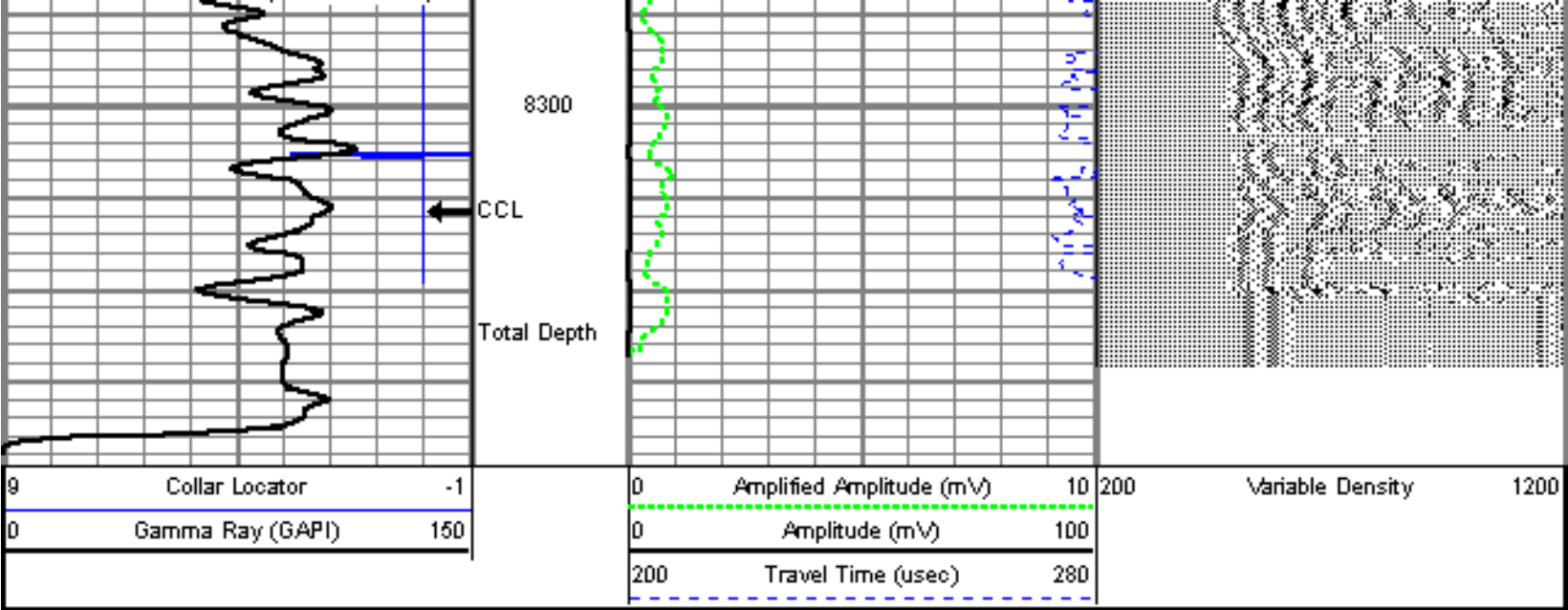
8200

8250


Gamma Ray




Amplitude



Sensor	Offset (ft)	Schematic	Description	Len (ft)	OD (in)	Wt (lb)
CCL	18.54		titan	1.00	1.69	2.00
			SOND_X_CCL-SOND_X_3_13_CCL (000001) CSS Gamma Ray/CCL (CCL Section)	1.92	3.13	11.02
			SONDEX	2.71	2.75	32.00
WVFS3FT	10.78		SOND_X_RBT-007 (000001) Radial Bond Tool - Analog 3 1/8	9.47	3.13	140.00
WVFS1	10.78					
WVFS2	10.78					
WVFS3	10.78					
WVFS4	10.78					
WVFS5	10.78					
WVFS6	10.78					
WVFS7	10.78					
WVFS8	10.78					
WVFS5FT	9.78					

GR	2.03		SONDEX	2.71	2.75	32.00
			SNDX_GR-SNDX_3_13_GR (000002) Sondex Production Gamma Ray	2.94	3.13	22.05
Dataset: kenyon_8_8_19.db: field/well/run1/pass6 Total Length: 20.75 ft Total Weight: 239.07 lb O.D. 3.13 in						

	Company	ENCANA OIL & GAS (USA) INC.
	Well	KENYON 8-8-19
	Field	WATTENBERG
	County	WELD
	State	CO