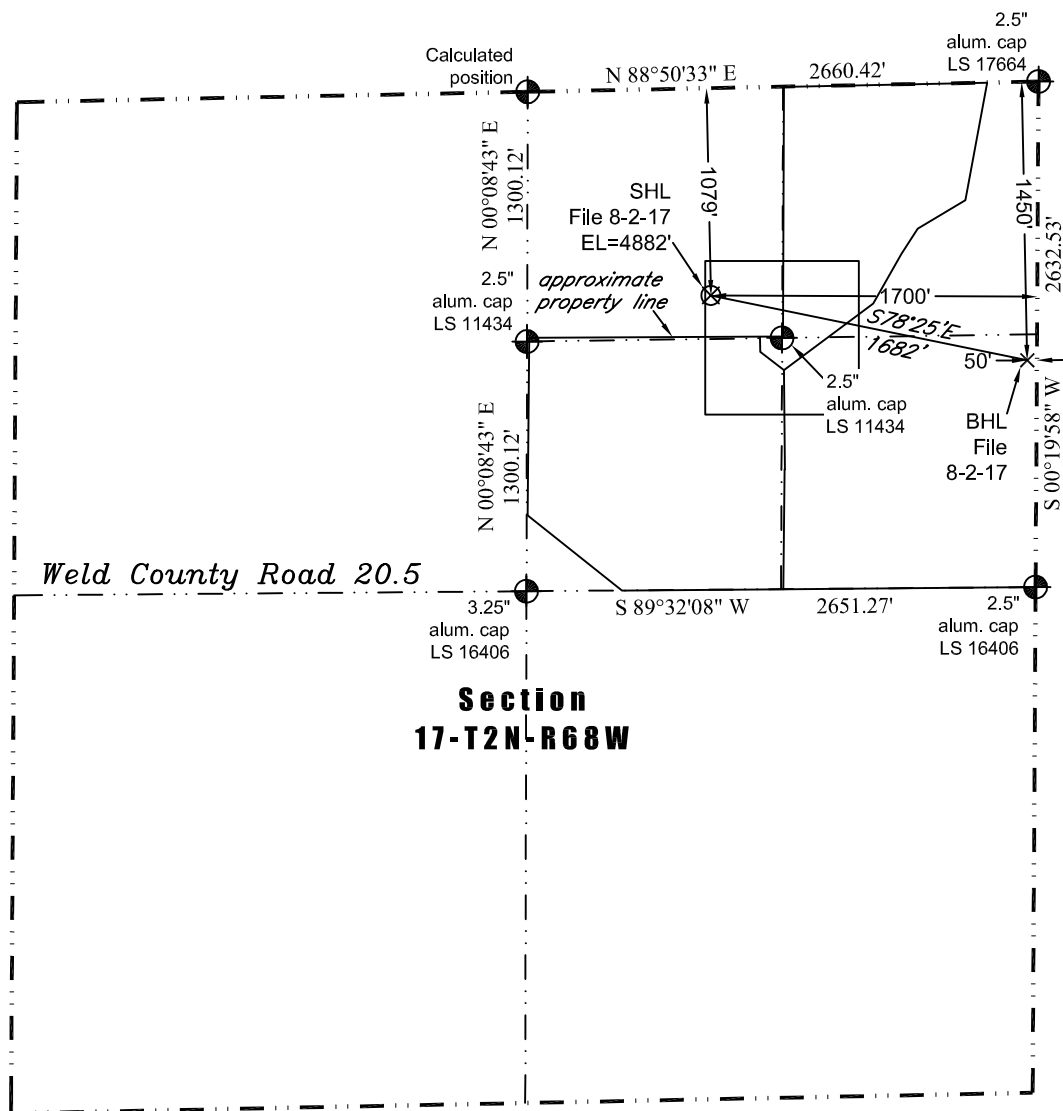


**PLS Group, LLC**

109 Coronado Ct. - Building No. 7  
Fort Collins, Colorado 80525  
P. 970-282-3446 Fx. 970-377-6767

**WELL LOCATION CERTIFICATE**

Scale 1" = 1000'  
1000  
approximate scale

**LEGEND**

● - survey monument  
(c) - calculated position

In accordance with a request from Dave Bale of EnCana Oil & Gas (USA) Inc., PLS Group, LLC has determined the location of the **File 8-2-17** well site to be SHL: 1079' FNL and 1700' FEL, (BHL 1450' FNL and 50' FEL) as measured at ninety (90) degrees from the section lines of Section 17, Township 2 North, Range 68 West, 6th Principal Meridian, County of Weld, CO.

**Proposed Surface Hole Data:**

Latitude: N 40.14291° (BHL 40.14196°)  
Longitude: W 105.02369° (BHL 105.01780°)  
PDOP: 2.1

**Nearest:**

Building 393' southeast	Above Ground Utility 1,004' west
Public Road 1,524' south	Railroad 9,861' northwest
Property Line 216' south	Well Window: SHL is 29' inside
Existing Well: Longmont #8-10K 2,785' northeast	

**Notes:**

- 1) Bearings and distances based on NAD 83 Colorado North State Plane Coordinates using RTK GPS observations taken 5/9/11 by operator Craig bBurke.
- 2) Conversion factor to ground (1.00027187).
- 3) Elevations based on NAVD 88 GPS heights and Geoid 2003 corrections.
- 4) See improvement map for visible improvements within 400' of pad site.
- 5) The surface use is agricultural field.

**NOTICE:** According to Colorado law you MUST commence any legal action based upon any defect in this W.L.C. within three years after you first discover such defect. In no event may any action based upon any defect in this W.L.C. be commenced more than ten years from this said date of the certification shown hereon.

I hereby certify that this Well Location Certificate was prepared by me or under my direct supervision on 5/18/2011 for and on behalf of EnCana Oil & Gas (USA) Inc. That it is not a Land Survey Plat or an Improvement Survey Plat and that it is not to be relied upon for establishment of fences, buildings, or other future improvement lines.

38219  
5-18-2011  
PROFESSIONAL LAND SURVEYOR  
John Robert McGehee LS#38219  
Well: File 8-2-17 WLC