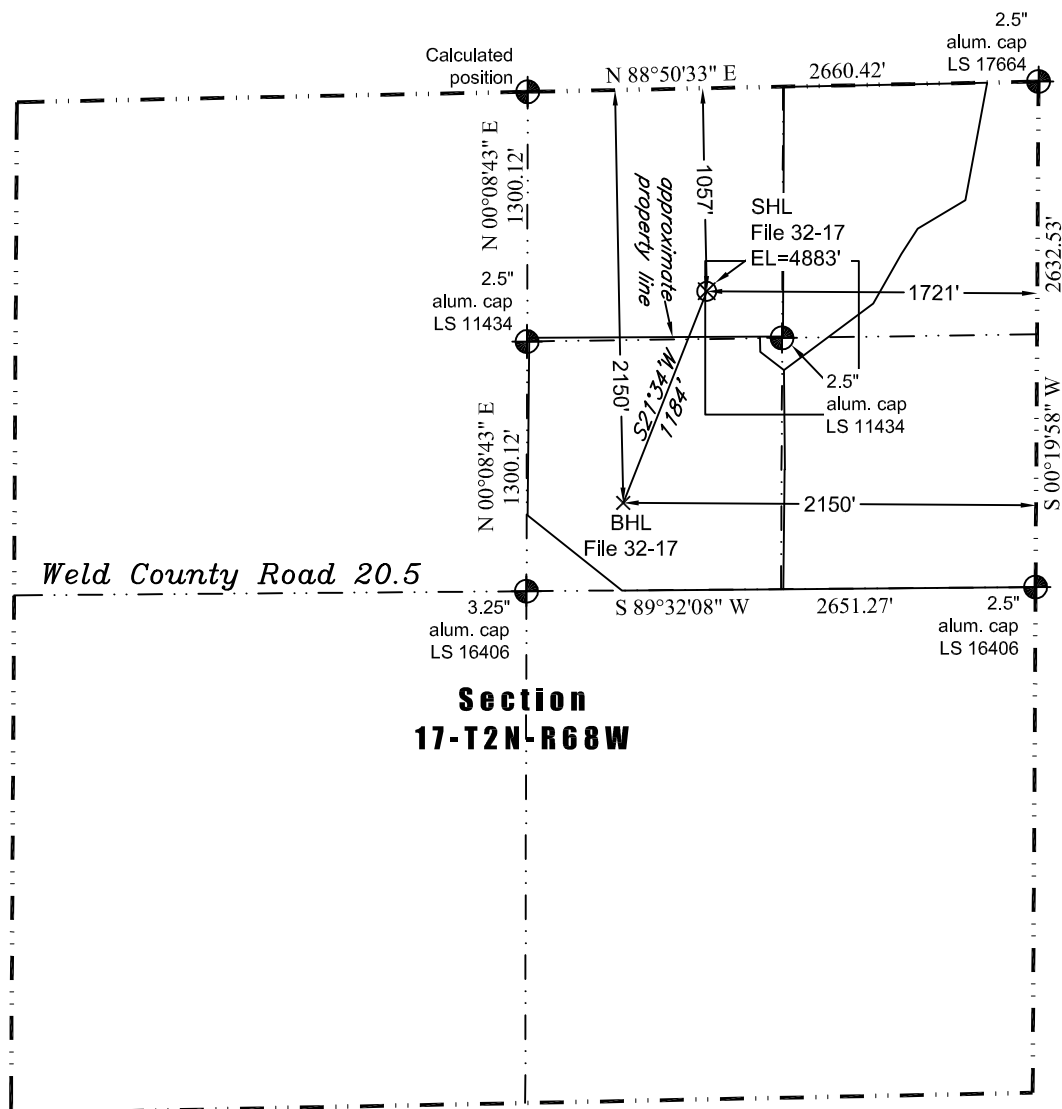


PLS Group, LLC

109 Coronado Ct. - Building No. 7
Fort Collins, Colorado 80525
P. 970-282-3446 Fx. 970-377-6767

WELL LOCATION CERTIFICATE

Section
17-T2N-R68W

LEGEND
 - survey monument
 (c) - calculated position

In accordance with a request from Dave Bale of EnCana Oil & Gas (USA) Inc., PLS Group, LLC has determined the location of the **File 32-17** well site to be SHL: 1057' FNL and 1721' FEL, (BHL 2150' FNL and 2150' FEL) as measured at ninety (90) degrees from the section lines of Section 17, Township 2 North, Range 68 West, 6th Principal Meridian, County of Weld, CO.

Proposed Surface Hole Data:

Latitude: N 40.14297° (BHL 40.13995°)
Longitude: W 105.02376° (BHL 105.02534°)
PDOP: 2.7

Nearest:

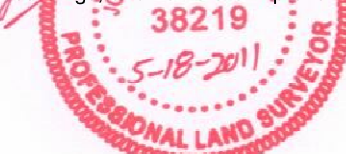
Building 423' southeast	Above Ground Utility 983' west
Public Road 1,545' south	Railroad 9,833' northwest
Property Line 237' south	Well Window: SHL is 8' inside
Existing Well: Longmont #8-10K 2,765' northeast	

Notes:

- 1) Bearings and distances based on NAD 83 Colorado North State Plane Coordinates using RTK GPS observations taken 5/9/11 by operator Craig bBurke.
- 2) Conversion factor to ground (1.00027187).
- 3) Elevations based on NAVD 88 GPS heights and Geoid 2003 corrections.
- 4) See improvement map for visible improvements within 400' of pad site.
- 5) The surface use is agricultural field.

NOTICE: According to Colorado law you MUST commence any legal action based upon any defect in this W.L.C. within three years after you first discover such defect. In no event may any action based upon any defect in this W.L.C. be commenced more than ten years from this said date of the certification shown hereon.

I hereby certify that this Well Location Certificate was prepared by me or under my direct supervision on 5/18/2011 for and on behalf of EnCana Oil & Gas (USA) Inc. That it is not a Land Survey Plat or an Improvement Survey Plat and that it is not to be relied upon for establishment of fences, buildings, or other future improvement lines.



John Robert McGehee LS#38219
Well: File 32-17 WLC