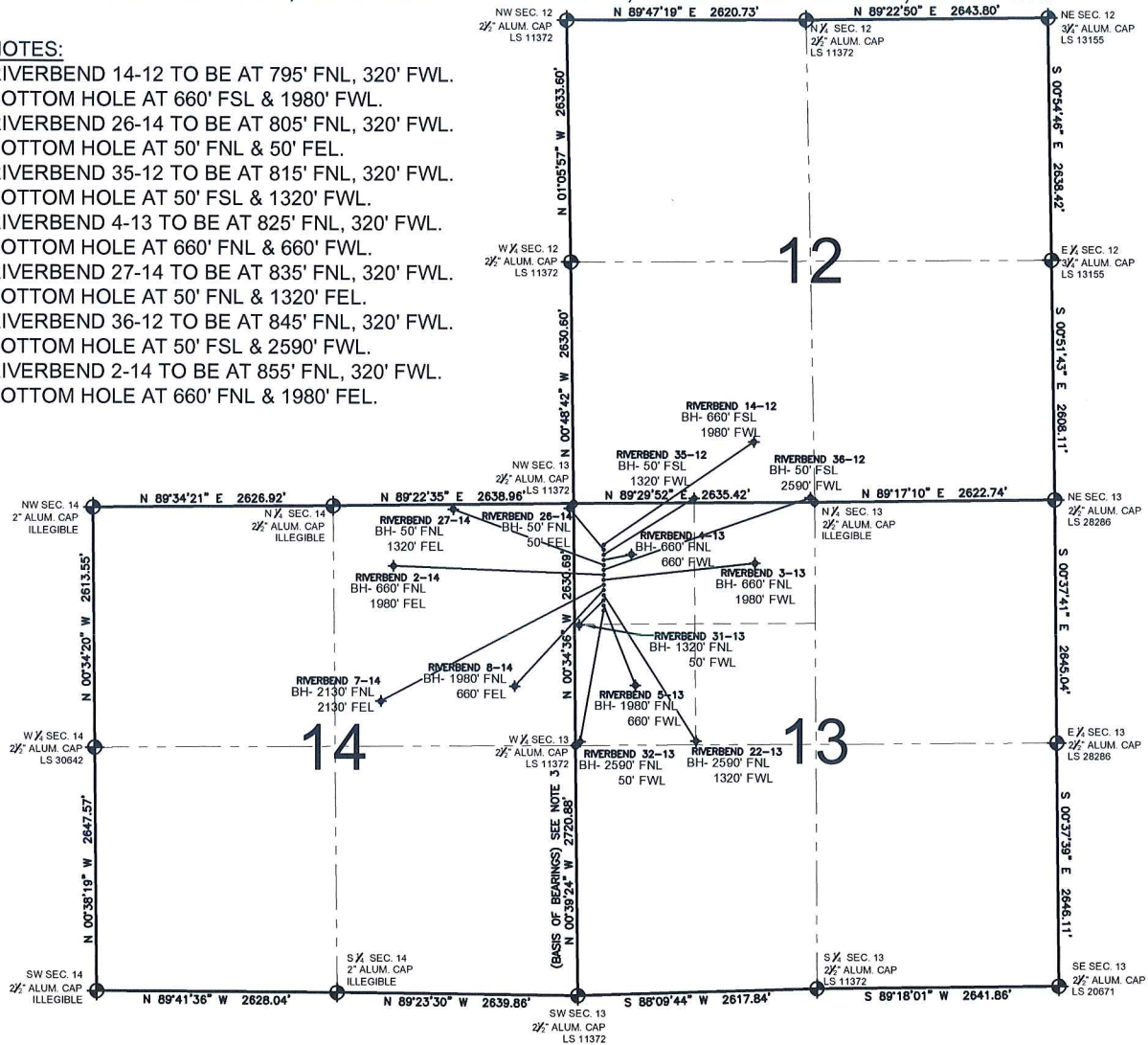


PAD DRAWING - RIVERBEND 14 PAD

SECTION 13, TOWNSHIP 1 NORTH, RANGE 67 WEST, 6TH P.M.

NOTES:

RIVERBEND 14-12 TO BE AT 795' FNL, 320' FWL.
 BOTTOM HOLE AT 660' FSL & 1980' FWL.
 RIVERBEND 26-14 TO BE AT 805' FNL, 320' FWL.
 BOTTOM HOLE AT 50' FNL & 50' FEL.
 RIVERBEND 35-12 TO BE AT 815' FNL, 320' FWL.
 BOTTOM HOLE AT 50' FSL & 1320' FWL.
 RIVERBEND 4-13 TO BE AT 825' FNL, 320' FWL.
 BOTTOM HOLE AT 660' FNL & 660' FWL.
 RIVERBEND 27-14 TO BE AT 835' FNL, 320' FWL.
 BOTTOM HOLE AT 50' FNL & 1320' FEL.
 RIVERBEND 36-12 TO BE AT 845' FNL, 320' FWL.
 BOTTOM HOLE AT 50' FSL & 2590' FWL.
 RIVERBEND 2-14 TO BE AT 855' FNL, 320' FWL.
 BOTTOM HOLE AT 660' FNL & 1980' FEL.



LEGEND

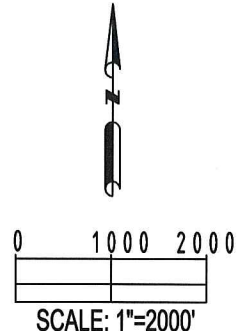
- ⊕ = EXISTING MONUMENT
- = PROPOSED WELL
- ⬮ = BOTTOM HOLE
- ◆ = EXISTING WELL
- BH= BOTTOM HOLE

NOTES:

- THIS SURVEY WAS DONE BY GPS METHODS AND CONFORMS TO THE MINIMUM STANDARDS SET BY THE C.O.G.C.C., RULE NO. 215
- ELEVATIONS SHOWN AT THE WELL HEAD, AS WELL AS HORIZONTAL CONTROL, ARE BASED ON GPS-RTK VALUES DERIVED FROM DOING 2-HOUR STATIC GPS SESSIONS AND REDUCTIONS USING O.P.U.S. SOLUTIONS.
 VERTICAL = NAVD88; HORIZONTAL = NAD83/92
- THE BEARINGS SHOWN HEREON ARE BASED ON GPS OBSERVATIONS BETWEEN THE MONUMENTS SHOWN HEREON AS FOUND ON THE FIELD DATE BELOW.
- DISTANCES SHOWN ARE AT GRID LEVEL, AS MEASURED IN THE FIELD, WITH TIES TO WELLS MEASURED AT A PERPENDICULAR TO SECTION LINES.

NOTES:

RIVERBEND 3-13 TO BE AT 865' FNL, 320' FWL.
 BOTTOM HOLE AT 660' FNL & 1980' FWL.
 RIVERBEND 7-14 TO BE AT 875' FNL, 320' FWL.
 BOTTOM HOLE AT 2130' FNL & 2130' FEL.
 RIVERBEND 8-14 TO BE AT 885' FNL, 320' FWL.
 BOTTOM HOLE AT 1980' FNL & 660' FEL.
 RIVERBEND 22-13 TO BE AT 895' FNL, 320' FWL.
 BOTTOM HOLE AT 2590' FNL & 1320' FWL.
 RIVERBEND 31-13 TO BE AT 905' FNL, 320' FWL.
 BOTTOM HOLE AT 1320' FNL & 50' FWL.
 RIVERBEND 5-13 TO BE AT 915' FNL, 320' FWL.
 BOTTOM HOLE AT 1980' FNL & 660' FWL.
 RIVERBEND 32-13 TO BE AT 925' FNL, 320' FWL.
 BOTTOM HOLE AT 2590' FNL & 50' FWL.



REVISIONS

INITIAL	DATE

PREPARED BY:

PFS

Petroleum Field Services, LLC
 1801 W. 13th Ave.
 Denver, CO 80204



KERR-MCGEE OIL & GAS ONSHORE LP

FIELD DATE:
04-27-10

DRAWING DATE:
04-30-10

BY:
SMF

PAD NAME:
RIVERBEND 14 PAD

SURFACE LOCATION:

WELD COUNTY, COLORADO
 NW 1/4 NW 1/4, SEC. 13, T1N, R67W