

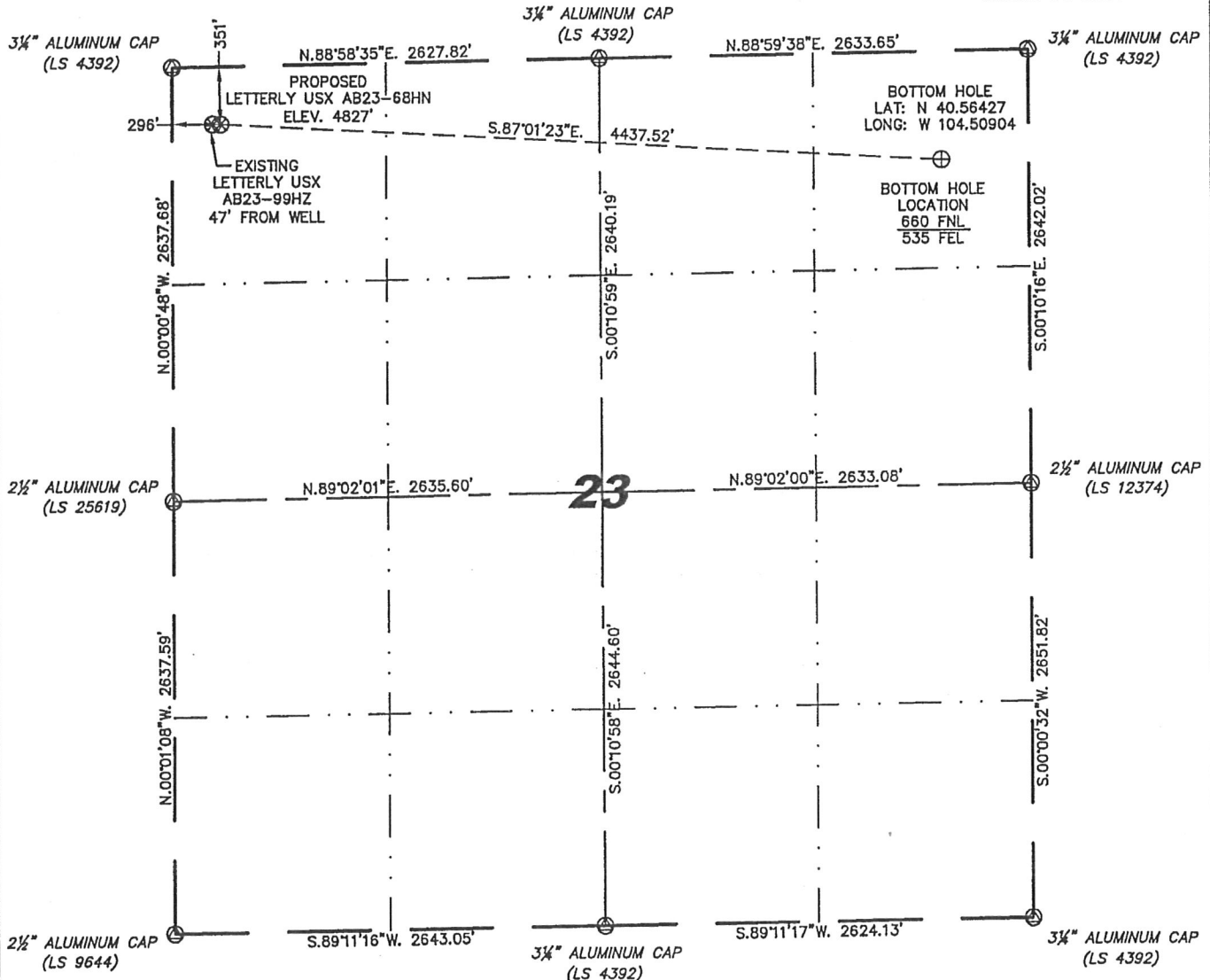
Stell Surveying Services, LLC

1102 West 19th Street P.O. BOX 2073

Cheyenne, Wyoming 82001

WELL LOCATION CERTIFICATE  
THIS MAP DOES NOT REPRESENT A BOUNDARY SURVEY

SECTION 23  
TOWNSHIP 7 NORTH  
RANGE 64 WEST



0 1000

Scale: 1" = 1000'

IN ACCORDANCE WITH A REQUEST FROM ERIK VAN DECAR - NOBLE ENERGY INC, STELL SURVEYING SERVICES, LLC HAS DETERMINED THE LOCATION OF THE LETTERLY USX AB23-68HN WELL TO BE 351' FNL, 296' FWL, AS MEASURED AT NINETY (90) DEGREES FROM THE SECTION LINES, SECTION 23, TOWNSHIP 7 NORTH, RANGE 64 WEST, 6TH PRINCIPLE MERIDIAN, WELD COUNTY, COLORADO.

I HEREBY CERTIFY THAT THIS WELL LOCATION CERTIFICATE WAS PREPARED BY ME, OR UNDER MY DIRECT SUPERVISION, THAT THE FIELD WORK WAS COMPLETED ON 04/18/2011, FOR AND ON BEHALF OF NOBLE ENERGY INC, THAT IT IS NOT A LAND SURVEY PLAT OR AN IMPROVEMENT SURVEY PLAT, AND THAT IT IS NOT TO BE RELIED UPON FOR ESTABLISHMENT OF FENCE, BUILDING, OR OTHER FUTURE IMPROVEMENT LINES.

NOTES:

- 1) BASIS OF BEARINGS FOR THIS MAP ARE BASED UPON GPS OBSERVATIONS MADE ON 08/01/2007 BETWEEN MONUMENTS LOCATED AT THE SOUTHEAST SECTION CORNER AND THE NORTHEAST SECTION CORNER OF SAID SECTION AND WITH ALL BEARINGS SHOWN HEREON RELATIVE THERETO.
- 2) COORDINATES SHOWN ARE COLORADO STATE PLANE (NORTH ZONE) NAD 83
- 3) ELEVATIONS ARE BASED UPON NGS OPUS SOLUTION NAVD 88 DATUM.
- 4) THE NEAREST EXISTING WELL IS: LETTERLY USX AB23-99HZ, 47' WEST.
- 5) SEE LOCATION DRAWING FOR ALL IMPROVEMENTS WITHIN VISIBLE IMPROVEMENT LIMIT.
- 6) THE LOCATION FALLS IN PASTURE LAND.

LATITUDE & LONGITUDE (NAD 83 SURFACE HOLE):

LATITUDE: N 40.56504'  
LONGITUDE: W 104.52498'  
PDOP: 1.7  
QUARTER-QUARTER: NW/4NW/4  
NEAREST PROPERTY LINE: 296' WEST

LEGEND

- (A) FOUND SURVEY MONUMENT PER MONUMENT RECORD - EXCEPTIONS NOTED.
- (C) CALCULATED DIMENSION

NOTICE: According to Colorado law you MUST commence any legal action based upon any defect in this W.L.C. within three years after you first discover such defect. In no event may any action based upon any defect in this W.L.C. be commenced more than ten years from the sold date of the certification shown hereon.



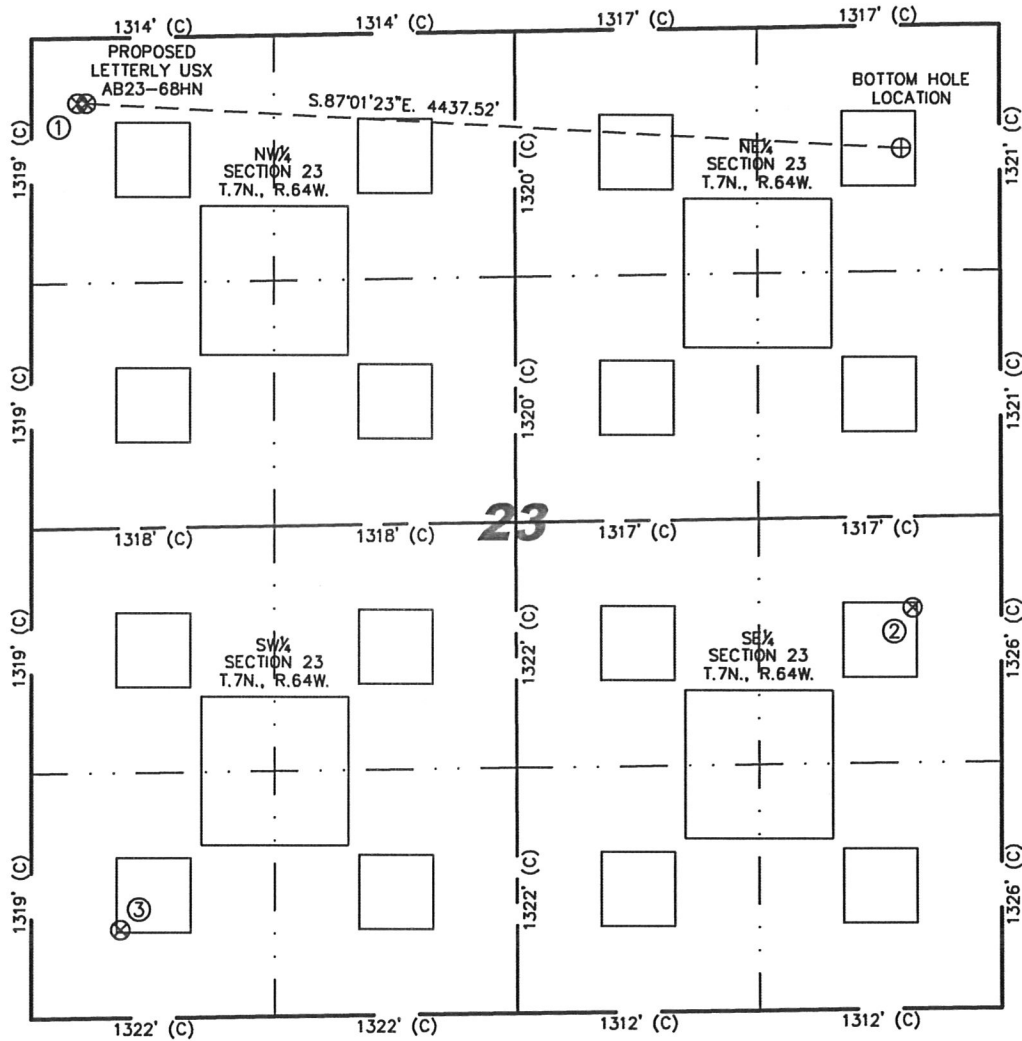
Completed 04/21/2011

David C. Holmes  
Professional Land Surveyor Registration No. 32828  
State of Colorado

JOB #: 11086

# SITE SKETCH – LETTERLY USX AB23–68HN

SECTIONS 23  
TOWNSHIP 7 NORTH  
RANGE 64 WEST



①	②	③
LETTERLY USX AB23–99HZ NW/NW SEC. 23 350' FNL 249' FWL EL 4826' N 40.56504 W 104.52515 PDOP 2.1	LETTERLY USX AB23–09P NE/SE SEC. 23 2159' FSL 480' FEL EL 4789' N 40.55748 W 104.50892 PDOP 1.9	LETTERLY USX AB23–13 SW/SW SEC. 23 476' FSL 482' FWL EL 4845' N 40.55283 W 104.52448 PDOP 2.0

## NOTES:

- THIS SKETCH DOES NOT REPRESENT A BOUNDARY SURVEY.
- THE DATUM FOR THE LATITUDES AND LONGITUDES ON THIS SKETCH IS NAD83.



0 1000

Scale: 1" = 1000'