

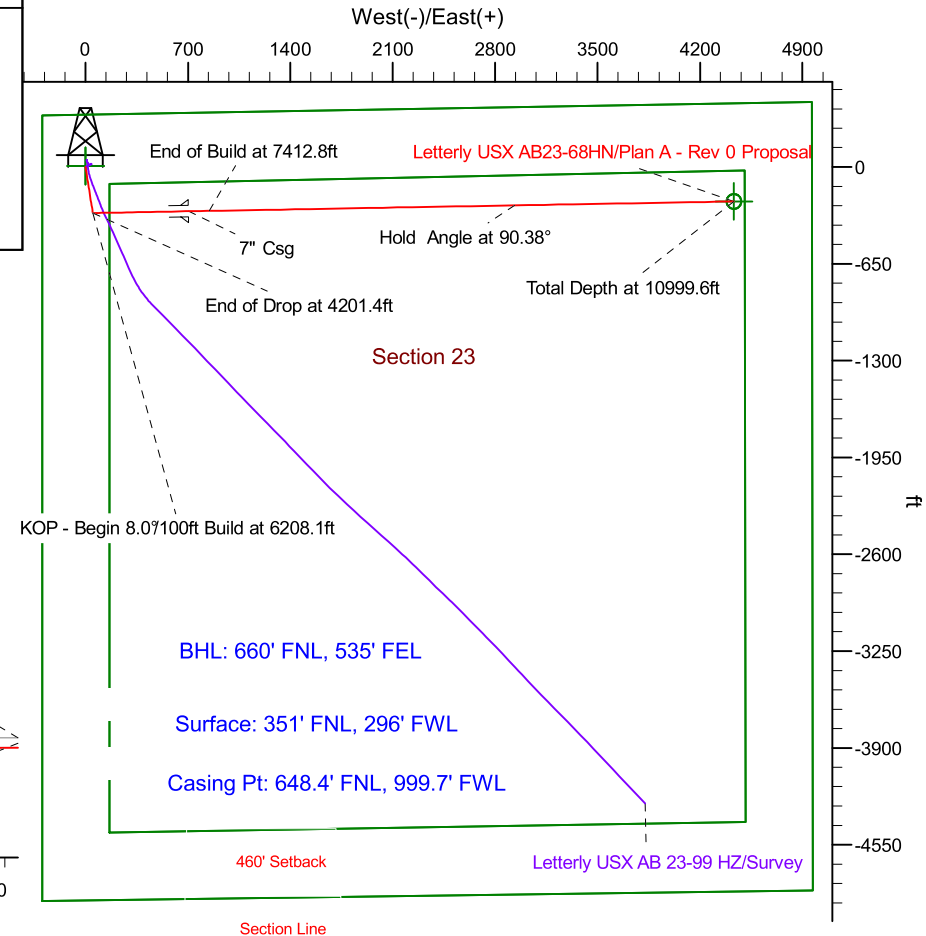
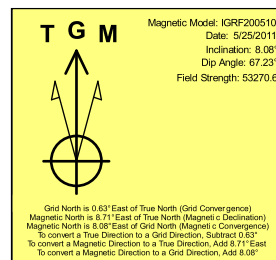
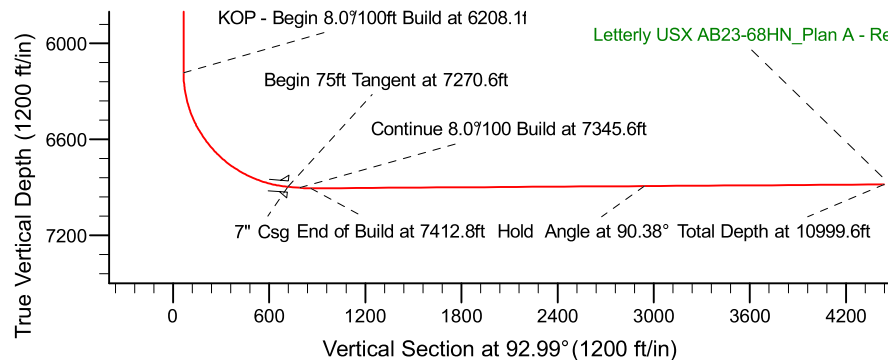
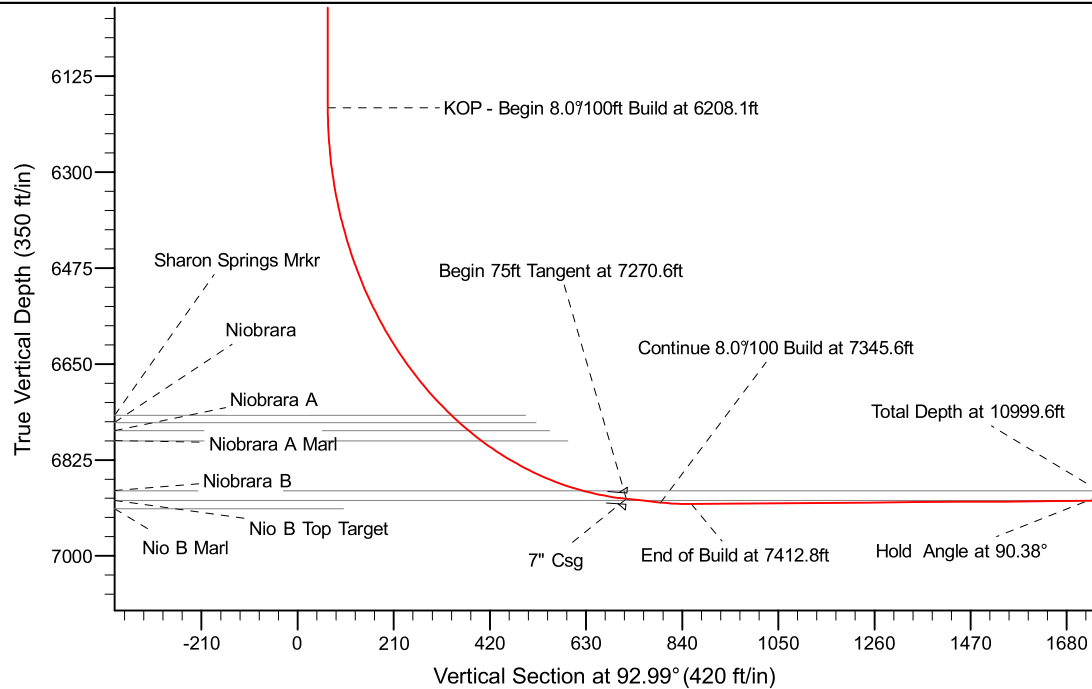
Project: Weld County Colorado (NAD 83)
Site: Sec.23, T7N, R64W
Well: Letterly USX AB23-68HN
Wellbore: Plan A - Rev 0 (PERMITTING PLAN ONLY)
Design: Plan A - Rev 0 Proposal

Noble Energy

HALLIBURTON
Sperry Drilling

SECTION DETAILS

Sec	MD	Inc	Azi	TVD	+N/-S	+E/-W	Dleg	TFace	VSect	Target
1	0.0	0.00	0.00	0.0	0.0	0.0	0.00	0.00	0.0	
2	2000.0	0.00	0.00	2000.0	0.0	0.0	0.00	0.00	0.0	
3	2400.1	10.00	170.81	2398.0	-34.4	5.6	2.50	170.81	7.3	
4	3801.3	10.00	170.81	3778.0	-274.6	44.4	0.00	0.00	58.7	
5	4201.4	0.00	0.00	4176.0	-309.0	50.0	2.50	180.00	66.0	
6	6208.1	0.00	0.00	6182.7	-309.0	50.0	0.00	0.00	66.0	
7	7270.6	85.00	88.98	6896.2	-297.4	703.7	8.00	88.98	718.2	
8	7345.6	85.00	88.98	6902.8	-296.0	778.4	0.00	0.00	792.8	
9	7412.8	90.38	88.98	6905.5	-294.8	845.5	8.00	0.00	859.8	
10	10999.6	90.38	88.99	6881.6	-231.4	4431.6	0.00	73.77	4437.7	Letterly USX AB23-68HN_Plan A - Rev 0_BHL Tgt-



WELL DETAILS: Letterly USX AB23-68HN(NAD83 Geodetic System)

Ground Level: 4827.0
Northing 442014.03 Easting 996968.23 Latitude 40° 33' 54.144 N Longitude 104° 31' 29.928 W

Plan: Plan A - Rev 0 Proposal (Letterly USX AB23-68HN/Plan A - Rev 0 (PERMITTING PLAN ONLY))

Created By: Erasmo Mendoza Date: 13:36, June 01 2011