
OXY GRAND JUNCTION EBUSINESS

**CC 697-09-23A
GRAND VALLEY
Garfield County , Colorado**

**Cement Surface Casing
11-Apr-2011**

Post Job Summary

The Road to Excellence Starts with Safety

Sold To #: 344034	Ship To #: 2825577	Quote #:	Sales Order #: 7843294
Customer: OXY GRAND JUNCTION EBUSINESS	Customer Rep: VILLEGAS, ALEX		
Well Name: CC	Well #: 697-09-23A	API/UWI #:	
Field: GRAND VALLEY	City (SAP): PARACHUTE	County/Parish: Garfield	State: Colorado
Lat: N 39.535 deg. OR N 39 deg. 32 min. 6.382 secs.	Long: W 108.222 deg. OR W -109 deg. 46 min. 40.019 secs.		
Contractor: OXY	Rig/Platform Name/Num: H&P 330		
Job Purpose: Cement Surface Casing			
Well Type: Development Well	Job Type: Cement Surface Casing		
Sales Person: DUNNING, DUSTIN	Srvc Supervisor: MUHLESTEIN, RYAN	MBU ID Emp #:	453609

Job Personnel

HES Emp Name	Exp Hrs	Emp #	HES Emp Name	Exp Hrs	Emp #	HES Emp Name	Exp Hrs	Emp #
BANKS, BRENT A	10	371353	BROWN, TRAVIS A	10	396848	HAYES, DIRK A	5	336768
JENKINS, DEMON Lashaun	10	457892	MUHLESTEIN, RYAN Herrick	10	453609	ROSE, BENJAMIN Keith	5	487022

Equipment

HES Unit #	Distance-1 way	HES Unit #	Distance-1 way	HES Unit #	Distance-1 way	HES Unit #	Distance-1 way
10551730C	mile	10713294	mile	10724643	mile	10856464	mile
10867304	mile	10938657	mile	10938665	mile	10951244	mile
10973571	mile	10988978	mile	10998054	mile		

Job Hours

Date	On Location Hours	Operating Hours	Date	On Location Hours	Operating Hours	Date	On Location Hours	Operating Hours
4/12/2011	9	6	4/12/2011	1	1			
TOTAL			Total is the sum of each column separately					

Job

Formation Name	Formation Depth (MD)	Top	Bottom	Form Type	Job depth MD	Job Depth TVD	Water Depth	Perforation Depth (MD)	From	To
				BHST	2735. ft	2735. ft	4. ft			

Job Times

Called Out	Date	Time	Time Zone
11 - Apr - 2011	07:30	MST	
On Location	11 - Apr - 2011	15:00	MST
Job Started	11 - Apr - 2011	20:55	MST
Job Completed	11 - Apr - 2011	23:00	MST
Departed Loc	11 - Apr - 2011	01:00	MST

Well Data

Description	New / Used	Max pressure psig	Size in	ID in	Weight lbm/ft	Thread	Grade	Top MD ft	Bottom MD ft	Top TVD ft	Bottom TVD ft
OPEN HOLE SECTION				14.75				.	2735.	.	2735.
SURFACE CASING	Unknown		9.625	8.921	36.		J-55	.	2712.	.	2712.

Tools and Accessories

Type	Size	Qty	Make	Depth	Type	Size	Qty	Make	Depth	Type	Size	Qty	Make
Guide Shoe					Packer					Top Plug	9.625	1	HES
Float Shoe					Bridge Plug					Bottom Plug			
Float Collar					Retainer					SSR plug set			
Insert Float										Plug Container	9.625	1	HES
Stage Tool										Centralizers			

Miscellaneous Materials

Gelling Agt	Conc	Surfactant	Conc	Acid Type	Qty	Conc	%
Treatment Fld	Conc	Inhibitor	Conc	Sand Type	Size	Qty	

Fluid Data									
Stage/Plug #: 1									
Fluid #	Stage Type	Fluid Name	Qty	Qty uom	Mixing Density lbm/gal	Yield ft ³ /sk	Mix Fluid Gal/sk	Rate bbl/min	Total Mix Fluid Gal/sk
1	Water Spacer		20.00	bbl	8.33	.0	.0	6.0	
2	Gel Water		20.00	bbl	8.4	.0	.0	6.0	
3	Water Spacer		20.00	bbl	8.33	.0	.0	6.0	
4	Lead Cement	VERSACEM (TM) SYSTEM (452010)	1050.0	sacks	12.3	2.33	12.62	8.0	12.62
		12.62 Gal	FRESH WATER						
5	Tail Cement	VERSACEM (TM) SYSTEM (452010)	169.0	sacks	12.8	2.07	10.67	8.0	10.67
		10.67 Gal	FRESH WATER						
6	Displacement		206.00	bbl	8.4	.0	.0	7.5	
7	Topout Cement	HALCEM (TM) SYSTEM (452986)		sacks	12.5	1.97	10.96		10.96
		10.96 Gal	FRESH WATER						
Calculated Values		Pressures		Volumes					
Displacement	205.6	Shut In: Instant		Lost Returns	60	Cement Slurry	447.3	Pad	
Top Of Cement	SURFACE	5 Min		Cement Returns	60	Actual Displacement	205.6	Treatment	
Frac Gradient		15 Min		Spacers	60	Load and Breakdown		Total Job	712.3
Rates									
Circulating	13.3	Mixing	8	Displacement	7.5	Avg. Job	8		
Cement Left In Pipe	Amount	52 ft	Reason	Shoe Joint					
Frac Ring # 1 @	ID	Frac ring # 2 @	ID	Frac Ring # 3 @	ID	Frac Ring # 4 @	ID		
The Information Stated Herein Is Correct				Customer Representative Signature					

The Road to Excellence Starts with Safety

Sold To #: 344034		Ship To #: 2825577		Quote #:		Sales Order #: 7843294	
Customer: OXY GRAND JUNCTION EBUSINESS				Customer Rep: VILLEGAS, ALEX			
Well Name: CC			Well #: 697-09-23A			API/UWI #:	
Field: GRAND VALLEY		City (SAP): PARACHUTE		County/Parish: Garfield		State: Colorado	
Legal Description:							
Lat: N 39.535 deg. OR N 39 deg. 32 min. 6.382 secs.				Long: W 108.222 deg. OR W -109 deg. 46 min. 40.019 secs.			
Contractor: OXY			Rig/Platform Name/Num: H&P 330				
Job Purpose: Cement Surface Casing						Ticket Amount:	
Well Type: Development Well			Job Type: Cement Surface Casing				
Sales Person: DUNNING, DUSTIN			Srvc Supervisor: MUHLESTEIN, RYAN			MBU ID Emp #: 453609	

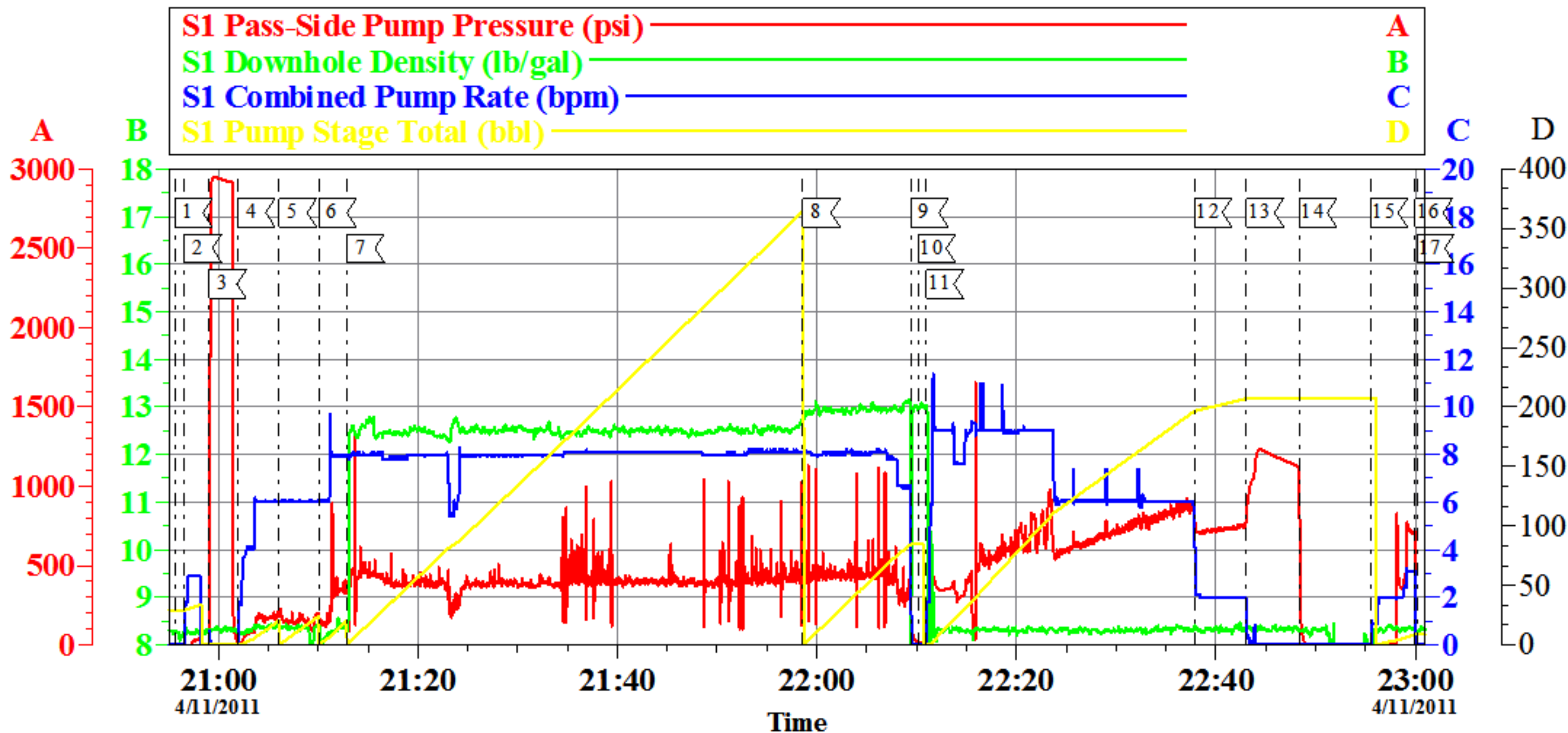
Activity Description	Date/Time	Cht #	Rate bbl/min	Volume bbl		Pressure psig		Comments
				Stage	Total	Tubing	Casing	
Call Out	04/12/2011 07:30							
Pre-Convoy Safety Meeting	04/12/2011 10:00							ALL HES EE'S
Arrive At Loc	04/12/2011 15:00							RIG STILL RUNNING
Pre-Rig Up Safety Meeting	04/12/2011 16:00							ALL HES EE'S
Rig-Up Equipment	04/12/2011 17:00							1 HT 400 PUMP, 2 BULK STORAGE BINS, F-450 PICK-UP, 1 PLUG CONTAINER
Pre-Job Safety Meeting	04/12/2011 20:30							ALL HES EE'S, RIG CREW AND CO REP
Start Job	04/12/2011 20:55							TD-2735' TP-2712' SJ-52' FC 2660' OH 14.75" CASING 9 5/8" 36# J-55. MUD REPORT 9.5 PPG, PV 14 YP 17. RIG CIRC 30 MIN PRIOR TO CMT JOB, 13.3 BPM, 371 PSI
Pump Water	04/12/2011 20:56		2	2			45.0	FRESH H2O TO FILL LINES
Test Lines	04/12/2011 20:59							HELD 3000 PSI FOR 2 MIN, NO LEAKS
Pump Spacer 1	04/12/2011 21:01		6	20			230.0	FRESH H2O
Pump Spacer 2	04/12/2011 21:06		6	20			220.0	LGC GEL SPACER 5 GAL PER 20 BBLS
Pump Spacer 1	04/12/2011 21:10		6	20			400.0	FRESH H2O

Activity Description	Date/Time	Cht #	Rate bbl/min	Volume bbl		Pressure psig		Comments
				Stage	Total	Tubing	Casing	
Pump Lead Cement	04/12/2011 21:12		8	385.9			675.0	930 SKS 12.3 PPG 2.33 FT3/SK 12.62 GAL/SK, 7 BOXES TUFF FIBER, PER CO REP 120 SKS NOT PUMPED AND REMAIN ON LOC FOR NEXT JOB
Pump Tail Cement	04/12/2011 21:58		8	62.3			650.0	169 SKS 12.8 PPG 2.07 FT3/SK 10.67 GAL/SK
Shutdown	04/12/2011 22:09							
Drop Top Plug	04/12/2011 22:10							VERIFY PLUG LAUNCHED
Pump Displacement	04/12/2011 22:11		7.5	205.6			975.0	FRESH H2O DISPLACEMENT, CMT RETURNS AT 145 BBLS AWAY, 60 BBLS CMT TO SURFACE
Slow Rate	04/12/2011 22:37		2	195			725.0	
Bump Plug	04/12/2011 22:43		2	205.6			1090.0	PLUG BUMPED AT 790 PSI
Check Floats	04/12/2011 22:48							FLOATS HELD, 1 BBL BACK TO PUMP TRUCK
Pump Water	04/12/2011 22:55							PUMP SUGAR WATER THRU PARASITE LINE, CIRCULATED AT 840 PSI, FLOW NOTED AT SURFACE 5 BBLS AWAY
Shutdown	04/12/2011 22:59							NO RETURNS ON SPACERS, GOOD RETURNS THROUGHOUT CMT AND DISPLACEMENT
End Job	04/12/2011 23:00							CREW ON LOC AT 1500 BP AT 2300, NO ADD HRS OR DERRICK CHARGE, 20 LBS SUGAR USED
Pre-Rig Down Safety Meeting	04/12/2011 23:15							ALL HES EE'S
Rig-Down Equipment	04/12/2011 23:30							
Pre-Convoy Safety Meeting	04/13/2011 00:30							ALL HES EE'S

Activity Description	Date/Time	Cht #	Rate bbl/ min	Volume bbl		Pressure psig		Comments
				Stage	Total	Tubing	Casing	
Crew Leave Location	04/13/2011 01:00							THANKS FOR USING HALLIBURTON CEMENT, RYAN MUHLESTEIN AND CREW

OXY

CC 697-09-23A 9 5/8" SURFACE CASING



Local Event Log

1	START JOB	20:55:38	2	FILL LINES	20:56:35	3	TEST LINES	20:59:03
4	PUMP H2O SPACER	21:01:56	5	PUMP GEL SPACER	21:06:05	6	PUMP H2O SPACER	21:10:04
7	PUMP LEAD CMT	21:12:53	8	PUMP TAIL CMT	21:58:35	9	SHUT DOWN	22:09:27
10	DROP PLUG	22:10:11	11	PUMP DISPLACEMENT	22:10:57	12	SLOW RATE	22:37:51
13	BUMP PLUG	22:43:03	14	CHECK FLOATS	22:48:23	15	PUMP H2O ON PARASITE	22:55:29
16	SHUT DOWN	22:59:59	17	END JOB	23:00:09			

Customer: OXY
Well Description: CC 697-09-23A
Customer Rep: ALEX VILLEGAS

Job Date: 11-Apr-2011
Job type: SURFACE
Service Supervisor: RYAN MUHLESTEIN

Sales Order #: 7843294
ADC Used: YES
Operator/ Pump: BRENT BANKS/ ELITE 2

OptiCem v6.4.6
12-Apr-11 00:34