
OXY GRAND JUNCTION EBUSINESS

**CC 697-09-35B
GRAND VALLEY
Garfield County , Colorado**

Cement Surface Casing
22-Apr-2011

Post Job Report

The Road to Excellence Starts with Safety

Sold To #: 344034	Ship To #: 2825565	Quote #:	Sales Order #: 8110162
Customer: OXY GRAND JUNCTION EBUSINESS	Customer Rep: Benevides, Victor		
Well Name: CC	Well #: 697-09-35B	API/UWI #: 05-045-18140	
Field: GRAND VALLEY	City (SAP): PARACHUTE	County/Parish: Garfield	State: Colorado
Lat: N 39.535 deg. OR N 39 deg. 32 min. 6.4 secs.	Long: W 108.222 deg. OR W -109 deg. 46 min. 39.709 secs.		
Contractor: H&P Drilling	Rig/Platform Name/Num: H&P 330		
Job Purpose: Cement Surface Casing			
Well Type: Development Well	Job Type: Cement Surface Casing		
Sales Person: DUNNING, DUSTIN	Srvc Supervisor: HUGENTOBLE, LOGAN	MBU ID Emp #: 447333	

Job Personnel

HES Emp Name	Exp Hrs	Emp #	HES Emp Name	Exp Hrs	Emp #	HES Emp Name	Exp Hrs	Emp #
COSTELDIA, BROCK James	25	476115	DANIEL, EVERETT Dean	25	337325	HUGENTOBLE, LOGAN Mark	25	447333
ROMKEE, DALE Alan	25	488215	SINGLETON, AUSTIN W	25	487406			

Equipment

HES Unit #	Distance-1 way	HES Unit #	Distance-1 way	HES Unit #	Distance-1 way	HES Unit #	Distance-1 way
10616651C	120 mile	10713212	120 mile	10829463	120 mile	10897849	120 mile
10938665	120 mile	10938678	120 mile	10988964	120 mile	10988978	120 mile
10995025	120 mile						

Job Hours

Date	On Location Hours	Operating Hours	Date	On Location Hours	Operating Hours	Date	On Location Hours	Operating Hours
4/21/11	12	3	4/22/11	13	3			

TOTAL Total is the sum of each column separately

Job				Job Times			
Formation Name				Date	Time	Time Zone	
Formation Depth (MD)	Top	Bottom		Called Out	21 - Apr - 2011	01:00	MST
Form Type	BHST			On Location	21 - Apr - 2011	12:00	MST
Job depth MD	2726. ft			Job Started	21 - Apr - 2011	21:12	MST
Water Depth	Wk Ht Above Floor			Job Completed	22 - Apr - 2011	01:25	MST
Perforation Depth (MD)	From	To		Departed Loc	22 - Apr - 2011	13:00	MST

Well Data

Description	New / Used	Max pressure psig	Size in	ID in	Weight lbm/ft	Thread	Grade	Top MD ft	Bottom MD ft	Top TVD ft	Bottom TVD ft
14 3/4" Open Hole				14.75				.	2726.		
9 5/8" Surface Casing	New		9.625	8.921	36.			.	2726.		

Sales/Rental/3rd Party (HES)

Description	Qty	Qty uom	Depth	Supplier
PLUG,CMTG,TOP,9 5/8,HWE,8.16 MIN/9.06 MA	1	EA		
R/A DENSOMETER W/CHART RECORDER,/JOB,ZI	1	JOB		
PORT. DATA ACQUIS. W/OPTICEM RT W/HES	1	EA		
ADC (AUTO DENSITY CTRL) SYS, /JOB,ZI	1	JOB		

Tools and Accessories

Type	Size	Qty	Make	Depth	Type	Size	Qty	Make	Depth	Type	Size	Qty	Make
Guide Shoe					Packer					Top Plug	9.625	1	HES
Float Shoe					Bridge Plug					Bottom Plug			
Float Collar					Retainer					SSR plug set			
Insert Float										Plug Container	9.625	1	HES
Stage Tool										Centralizers			

Miscellaneous Materials													
Gelling Agt		Conc		Surfactant		Conc		Acid Type		Qty		Conc	%
Treatment Fld		Conc		Inhibitor		Conc		Sand Type		Size		Qty	
Fluid Data													
Stage/Plug #: 1													
Fluid #	Stage Type	Fluid Name			Qty	Qty uom	Mixing Density lbm/gal	Yield ft3/sk	Mix Fluid Gal/sk	Rate bbl/min	Total Mix Fluid Gal/sk		
1	Water Spacer				20.00	bbl	8.33	.0	.0	5			
2	Gel Spacer				20.00	bbl	.	.0	.0	5			
3	Water Spacer				20.00	bbl	.	.0	.0	5			
4	Lead Cement	VERSACEM (TM) SYSTEM (452010)			1050.0	sacks	12.3	2.33	12.62	6.5	12.62		
		12.62 Gal			FRESH WATER								
5	Tail Cement	VERSACEM (TM) SYSTEM (452010)			170.0	sacks	12.8	2.07	10.67	6.5	10.67		
		10.67 Gal			FRESH WATER								
6	Displacement				205.00	bbl	.	.0	.0	6.5			
7	Topout Cement	HALCEM (TM) SYSTEM (452986)			57	sacks	12.5	1.97	10.96	2	10.96		
		10.96 Gal			FRESH WATER								
Calculated Values				Pressures				Volumes					
Displacement	205	Shut In: Instant		Lost Returns		YES	Cement Slurry		497	Pad			
Top Of Cement	SURFACE	5 Min		Cement Returns		0	Actual Displacement		205	Treatment			
Frac Gradient		15 Min		Spacers		60	Load and Breakdown			Total Job			
Rates													
Circulating		Mixing		6.5		Displacement		6.5		Avg. Job		6	
Cement Left In Pipe	Amount	53 ft		Reason		Shoe Joint							
Frac Ring # 1 @	ID	Frac ring # 2 @		ID	Frac Ring # 3 @		ID	Frac Ring # 4 @		ID			
The Information Stated Herein Is Correct						Customer Representative Signature							

The Road to Excellence Starts with Safety

Sold To #: 344034		Ship To #: 2825565		Quote #:		Sales Order #: 8110162	
Customer: OXY GRAND JUNCTION EBUSINESS				Customer Rep: Benevides, Victor			
Well Name: CC			Well #: 697-09-35B			API/UWI #: 05-045-18140	
Field: GRAND VALLEY		City (SAP): PARACHUTE		County/Parish: Garfield		State: Colorado	
Legal Description:							
Lat: N 39.535 deg. OR N 39 deg. 32 min. 6.4 secs.				Long: W 108.222 deg. OR W -109 deg. 46 min. 39.709 secs.			
Contractor: H&P Drilling			Rig/Platform Name/Num: H&P 330				
Job Purpose: Cement Surface Casing						Ticket Amount:	
Well Type: Development Well			Job Type: Cement Surface Casing				
Sales Person: DUNNING, DUSTIN			Srv Supervisor: HUGENTOBLE, LOGAN			MBU ID Emp #: 447333	

Activity Description	Date/Time	Cht #	Rate bbl/min	Volume bbl		Pressure psig		Comments
				Stage	Total	Tubing	Casing	
Call Out	04/21/2011 01:00							
Pre-Convoy Safety Meeting	04/21/2011 03:00							ALL HES EMPLOYEES
Arrive At Loc	04/21/2011 12:00							RIG STILL RUNNING CASING, COULD NOT SPOT EQUIPMENT, LOCATION EXTREMELY MUDDY HAD TO WAIT FOR RIVER ROCK AND BLADE TO CLEAN
Assessment Of Location Safety Meeting	04/21/2011 12:00							ALL HES EMPLOYEES
Rig-Up Equipment	04/21/2011 18:00							1 HT 400 PUMP TRUCK, 1 660 BULK TRUCK, 1 9.625 QUICK LATCH PLUG CONTAINER, 1 F450 P/U, 2 FIELD BINS,
Pre-Job Safety Meeting	04/21/2011 21:00							ALL HES EMPLOYEES, RIG CREW, CO REP.
Start Job	04/21/2011 21:12							TD 2726', TP 2710', FC 2657', HOLE 14.75", MUD WT 9.4 PPG, 800 BBLS OF H2O ON LOCATION, WATER SAMPLE SUBMITTED.
Pump Water	04/21/2011 21:12		2	2			78.0	FILL LINES
Pressure Test	04/21/2011 21:13							NO LEAKS,4000PSI
Pump Spacer 1	04/21/2011 21:18		5	20			155.0	FRESH WATER

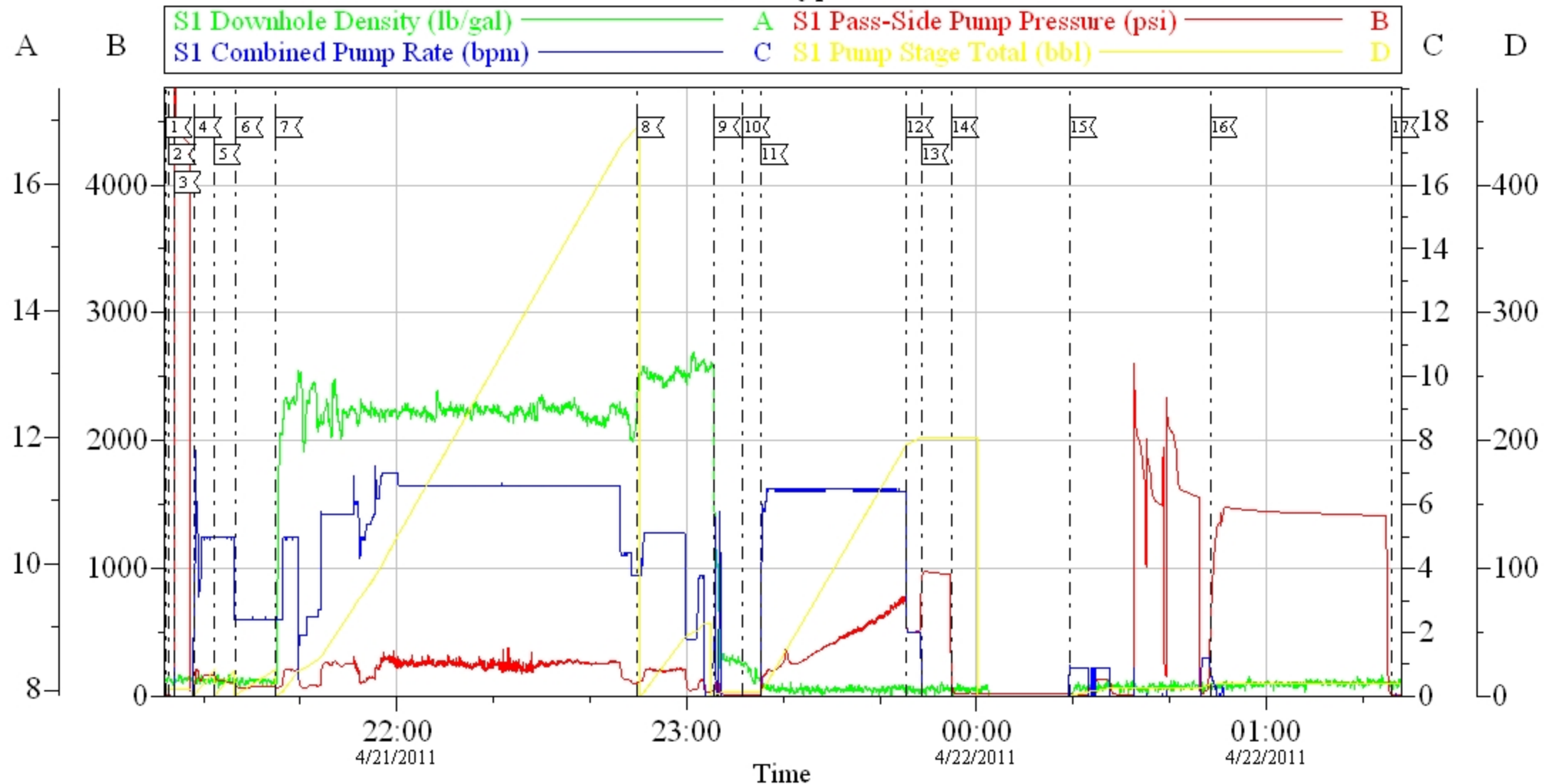
Activity Description	Date/Time	Cht #	Rate bbl/min	Volume bbl		Pressure psig		Comments
				Stage	Total	Tubing	Casing	
Pump Spacer	04/21/2011 21:22		5	20			167.0	PUMP GEL WATER SPACER
Pump Water	04/21/2011 21:26		5	20			178.0	PUMP WATER
Pump Lead Cement	04/21/2011 21:34		6.5	435			238.0	1050 SKS VARICEM CCMT TO BE MIXED AT 12.3 PPG, 2.33 YIELD, 12.62 GAL/SK, CMT TO BE WEIGHED VIA PRESSURE BALANCED MUD SCALES. WET AND DRY SAMPLES SUBMITTED.
Pump Tail Cement	04/21/2011 22:49		6.5	62			116.0	170 SKS VARICEM CCMT TO BE MIXED AT 12.8 PPG, 2.07 YIELD, 10.67 GAL/SK, CMT TO BE WEIGHED VIA PRESSURE BALANCED MUD SCALES. WET AND DRY SAMPLES SUBMITTED.
Shutdown	04/21/2011 23:05							FOR NO MORE THEN 5 MINUTES,
Drop Plug	04/21/2011 23:11							PLUG LAUNCH
Pump Displacement	04/21/2011 23:15		6.5	205			724.0	FRESH WATER, NO RETURNS MOSTOF THE JOB RECIEVED NO CEMENT TO SURFACE
Slow Rate	04/21/2011 23:45		2				499.0	10 BBLS PRIOR TO CALCULATED DISPLACEMENT
Bump Plug	04/21/2011 23:48		2				980.0	PLUG LANDED HOLD FOR TEN MINUTES
Check Floats	04/21/2011 23:54							FLOATS HOLDING, NO ANNULAR FLOW
Pump Spacer	04/22/2011 00:19							PUMPED 10BBLS SUGAR WATER THROUGH PARASITE STRING
End Job	04/22/2011 01:25							THANK YOU FOR USING HES FROM LOGAN HUGENTOBLE AND CREW.

Cementing Job Log

Activity Description	Date/Time	Cht #	Rate bbl/ min	Volume bbl		Pressure psig		Comments
				Stage	Total	Tubing	Casing	
Pump Cement	04/22/2011 06:36		2	20			65	PUMPED 20 BBLS TOP OUT CEMENT, GOT 6 BBLS TO SURFACE, USED 57 SKS FROM TOP OUT TRUCK ALREADY HERE, TAGGED CEMENT 17FT DOWN AFTER 2 HOURS WAIT
Post-Job Safety Meeting (Pre Rig-Down)	04/22/2011 10:00							ALL HES EMPLOYEES
Rig-Down Equipment	04/22/2011 10:15							SAFELY
Pre-Convoy Safety Meeting	04/22/2011 13:00							ALL HES EMPLOYEES
Crew Leave Location	04/22/2011 13:05							SITE WAS AS CLEAN AS WHEN WE ARRIVED

Customer

Job Type



Local Event Log

1 START JOB	4/21/2011 21:12:02	2 PRIMELINES	4/21/2011 21:12:44	3 PRESSURE TEST	4/21/2011 21:13:55
4 PUMP H2O SPACER	4/21/2011 21:18:06	5 PUMP GEL SPACER	4/21/2011 21:22:04	6 PUMP H2O SPACER	4/21/2011 21:26:43
7 PUMP LEAD CEMENT	4/21/2011 21:34:52	8 PUMP TAIL CEMENT	4/21/2011 22:49:44	9 SHUTDOWN	4/21/2011 23:05:35
10 DROP PLUG	4/21/2011 23:11:39	11 PUMP DISPLACEMENT	4/21/2011 23:15:24	12 SLOW RATE	4/21/2011 23:45:28
13 BUMP PLUG	4/21/2011 23:48:45	14 CHECK FLOATS	4/21/2011 23:54:49	15 PUMP THROUGH PARASITE	4/22/2011 00:19:18
16 PRESSURE TEST CASING	4/22/2011 00:48:25	17 END JOB	4/22/2011 01:25:58		

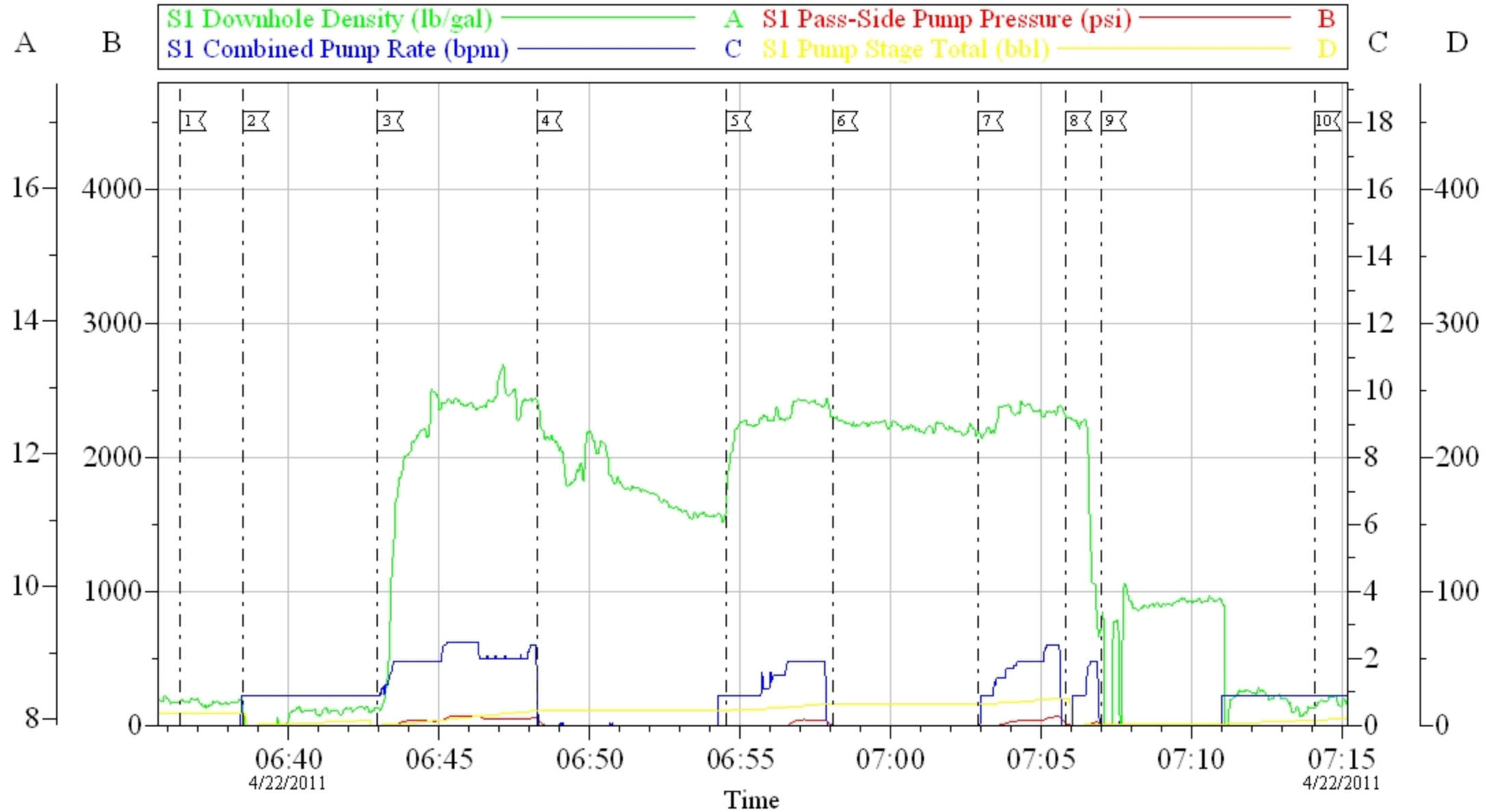
Customer: OXY
Well Description: CC697-09-35B
Company Rep: MARCO SILVIA

Job Date: 21-Apr-2011
Job Type: SURFACE
Cement Supervisor: LOGAN HUGENTOBLE

Sales Order #: 8110162
ADC Used: YES
Elite #4/ Operator: BROCK CASTELDIA

OptiCem v6.4.10
22-Apr-11 05:06

OXY TOP OUT #1



Local Event Log					
1	START JOB	06:36:24	2	PUMP H2O	06:38:30
3	PUMP TOP-OUT CEMENT	06:42:57	4	SHUTDOWN	06:48:14
5	PUMP TOP-OUT CEMENT	06:54:31	6	SHUTDOWN	06:58:04
7	PUMP TOP-OUT CEMENT	07:02:54	8	SHUTDOWN	07:05:49
9	PUMP H2O	07:06:59	10	END JOB	07:14:06

Customer: OXY	Job Date: 22-Apr-2011	Sales Order #: 8110162
Well Description: CC697-09-35B	Job Type: TOP-OUT	ADC Used: YES
Company Rep: MARCO SILVIA	Cement Supervisor: LOGAN HUGENTOBLER	Elite # 4/ Operator: DEAN DANEILS