

LOCATION DRAWING

VEGETATION:
DRY LAND PASTURE

SURFACE USE:
GRAZING

REFERENCE POINT

LATITUDE: 40.63928

LONGITUDE: -104.18805

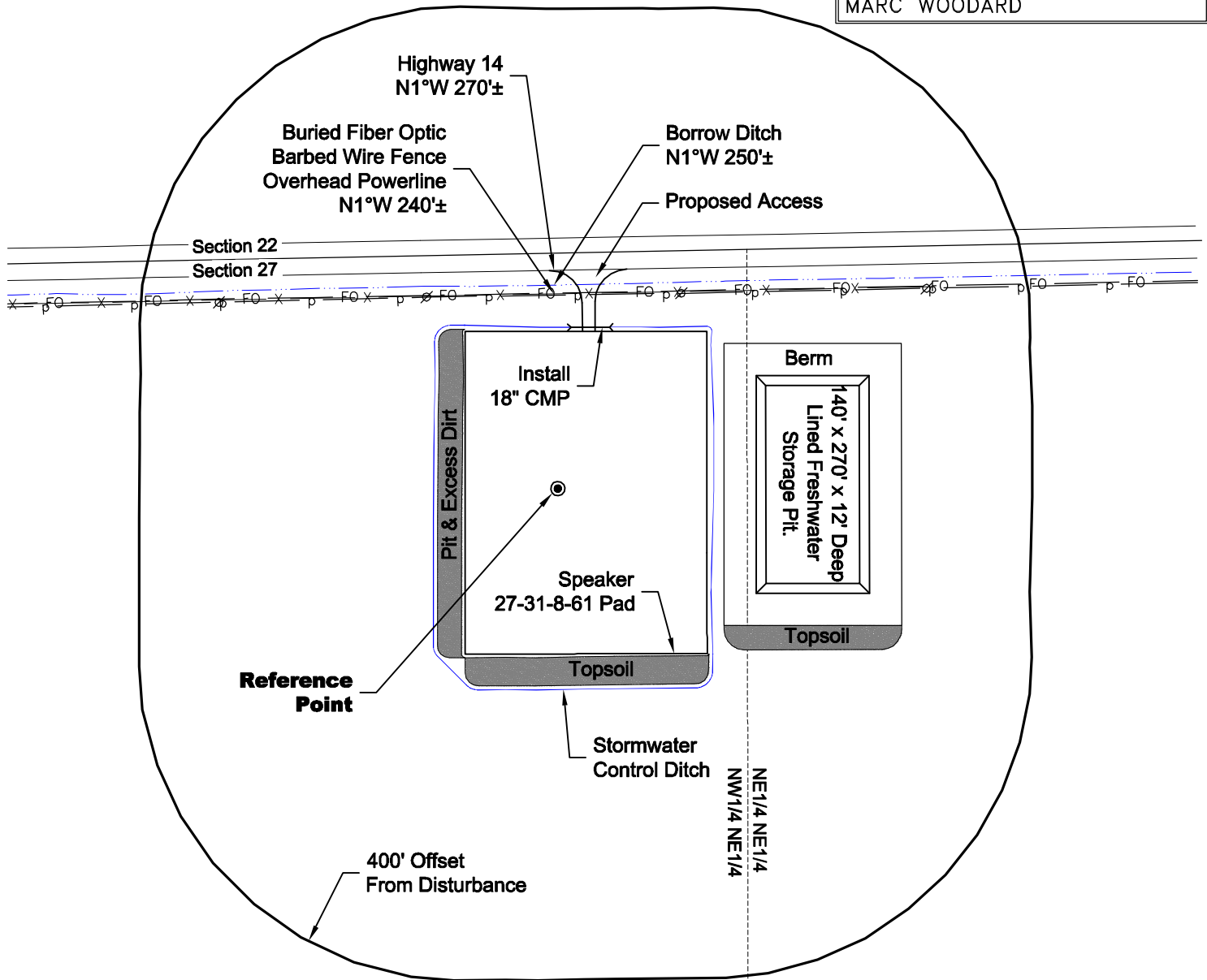
FOOTAGE: 292 FNL 1560 FEL

GROUND ELEVATION: 4991.8

PDOP: 2.3 DATE: 6/9/2011

INSTRUMENT OPERATOR:

MARC WOODARD



NOTE:

ALL PRODUCTION FACILITIES WILL BE ON PAD.

DISTURBANCE ACREAGE:
3.8± DRILLING OPERATIONS
2.0± FRESHWATER STORAGE PIT
1.0± INTERIM RECLAIM

6/10/11



North

0 200 400
Graphic Scale in Feet
1 Inch = 200 feet



LAND SURVEYING AND MAPPING
LAFAYETTE - WINTER PARK
Ph 303 666 0379 Fx 303 665 6320

CARRIZO OIL & GAS, INC
SPEAKER 27-31-8-61 PAD

NW1/4 NE1/4 SEC. 27 T8N R61W
6th PM WELD COUNTY COLORADO