



SUPERIOR
Hays,
Kansas

SONIC
LOG

Company MULL DRILLING COMPANY, INC.

Well WF-MICHEL #1-30

Field

County KIOWA

State

COLORADO

Location:

API # : 05-061-06848

1004 FSL & 2100' FEL

Other Services
CDL/CNL/PE
DIL/MEL

SEC 30 TWP 18S RGE 45W

Elevation

Permanent Datum GROUND LEVEL Elevation 3922

Log Measured From KELLY BUSHING 11' A.G.L.
Drilling Measured From KELLY BUSHING

K.B. 3933
D.F.
G.L. 3922

Date

11-9-10

Run Number

TW0

Depth Driller

4870

Depth Logger

4872

Bottom Logged Interval

4866

Top Log Interval

330

Casing Driller

327

Casing Logger

347

Bit Size

7.875

Type Fluid in Hole

CHEMICAL MUD

Density / Viscosity

9.2 / 51

pH / Fluid Loss

9.5 / 8.8

Source of Sample

FLOWLINE

Rim @ Meas. Temp

.90 @ 76F

Rmf @ Meas. Temp

0.68 @ 76F

Rmc @ Meas. Temp

1.08 @ 76F

Source of Rmf / Rmc

MEASURED

Rim @ BHT

.550 @ 124F

Time Circulation Stopped

3 HOURS

Time Logger on Bottom

2:20 P.M.

Maximum Recorded Temperature

124F

Equipment Number

860

Location

HAYS, KS.

Recorded By

RUPP

Witnessed By

PHIL ASKEY

<<< Fold Here >>>

All interpretations are opinions based on inferences from electrical or other measurements and we cannot and do not guarantee the accuracy or correctness of any interpretation, and we shall not, except in the case of gross or willful negligence on our part, be liable or responsible for any loss, costs, damages, or expenses incurred or sustained by anyone resulting from any interpretation made by any of our officers, agents or employees. These interpretations are also subject to our general terms and conditions set out in our current Price Schedule.

Comments

SUPERIOR WELL SERVICES
785-628-6395
THANK YOU FOR YOUR BUSINESS
DIRECTIONS: BRANDON, CO., 4E TO CR #54, 1/10N, E INTO.



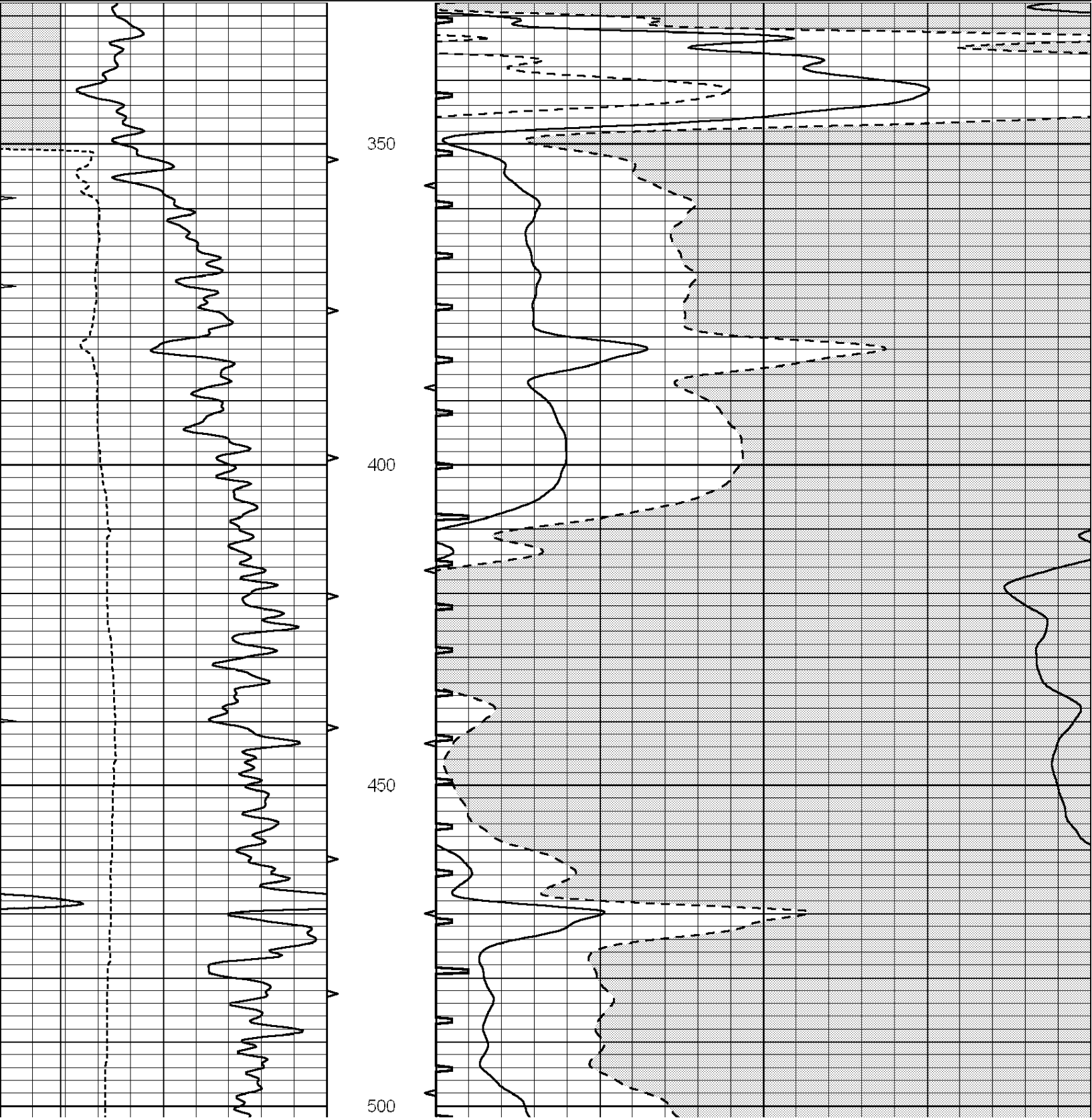
SUPERIOR

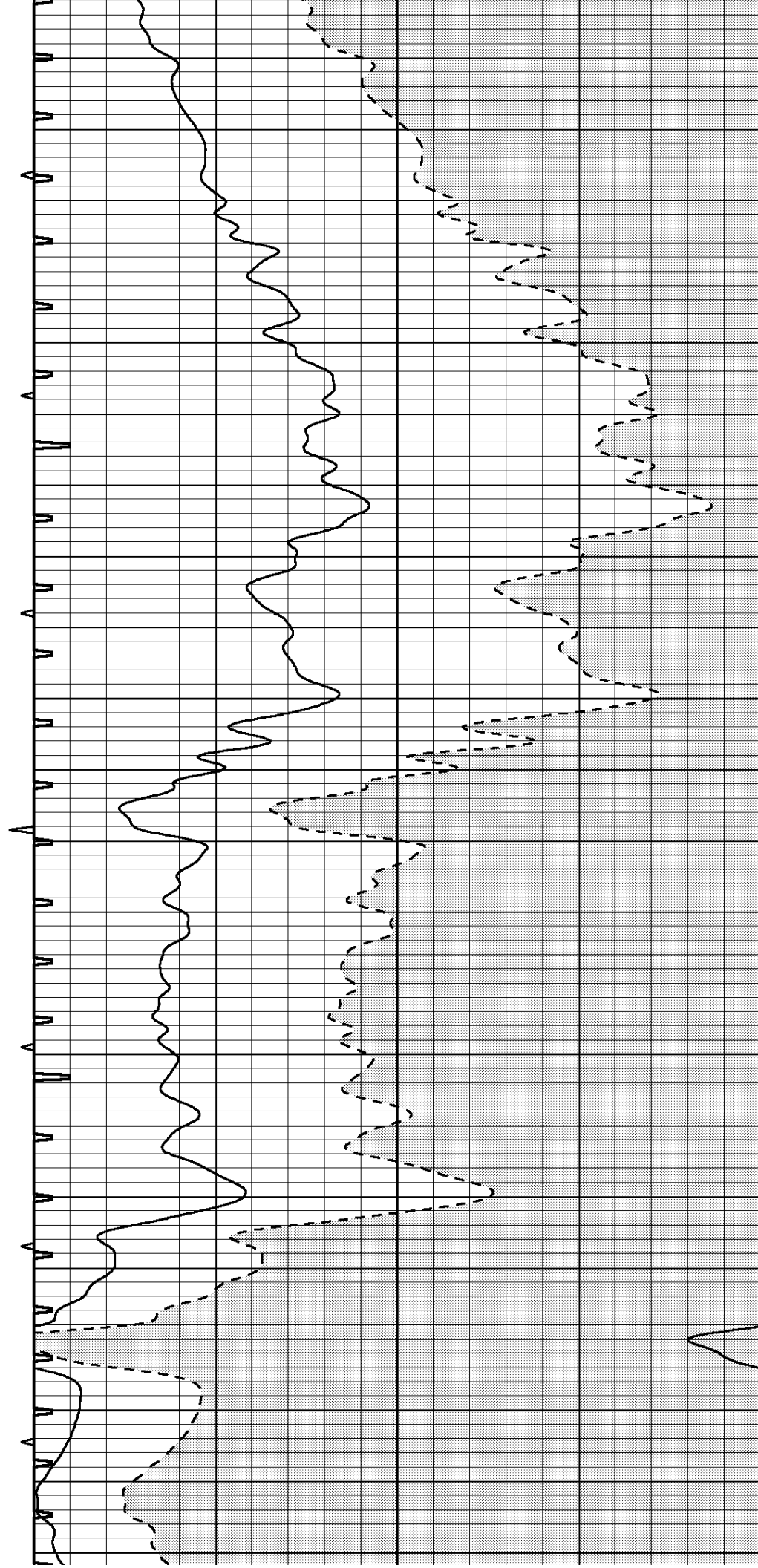
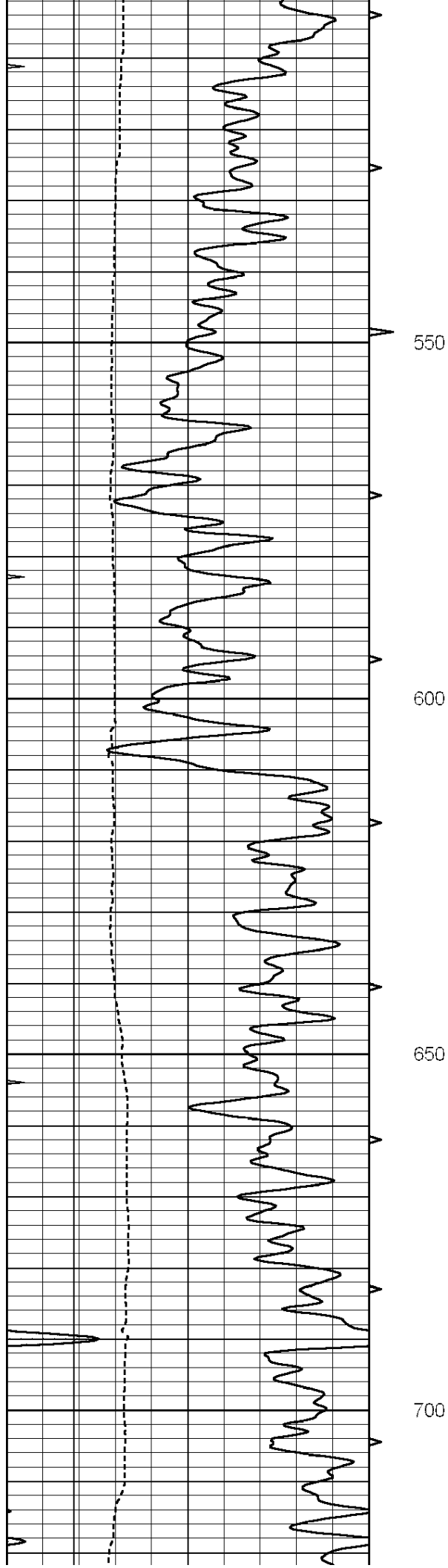
Hays,
Kansas

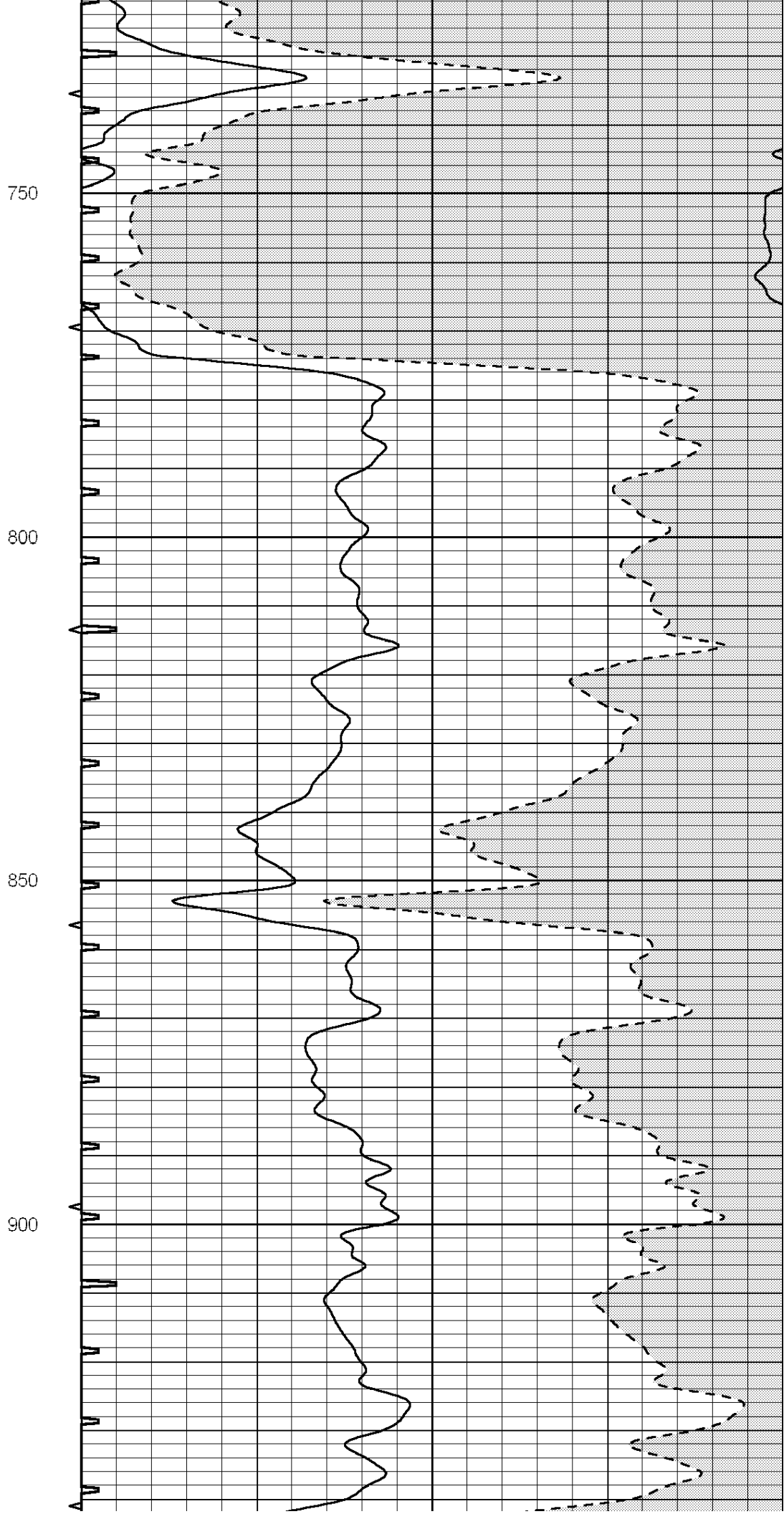
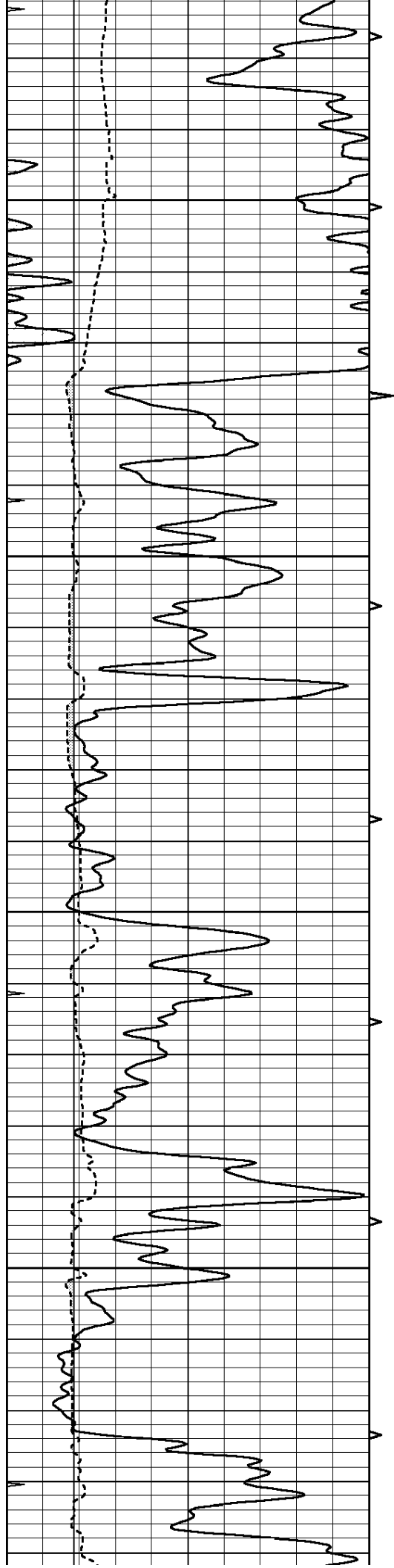
MAIN SECTION

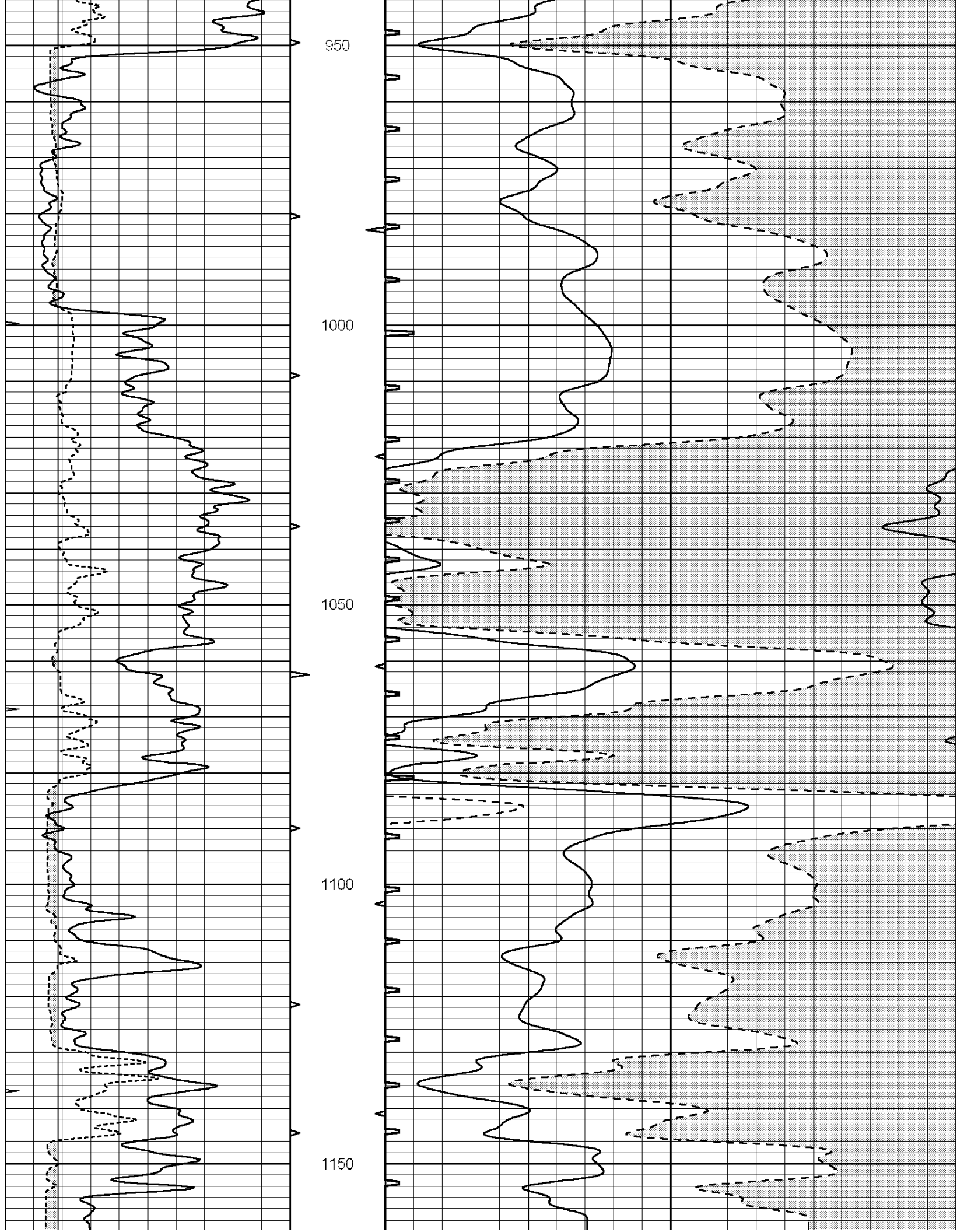
Database File: 005915pdr.db
Dataset Pathname: pass6.A
Presentation Format: slt
Dataset Creation: Tue Nov 09 19:45:37 2010
Charted by: Depth in Feet scaled 1:240

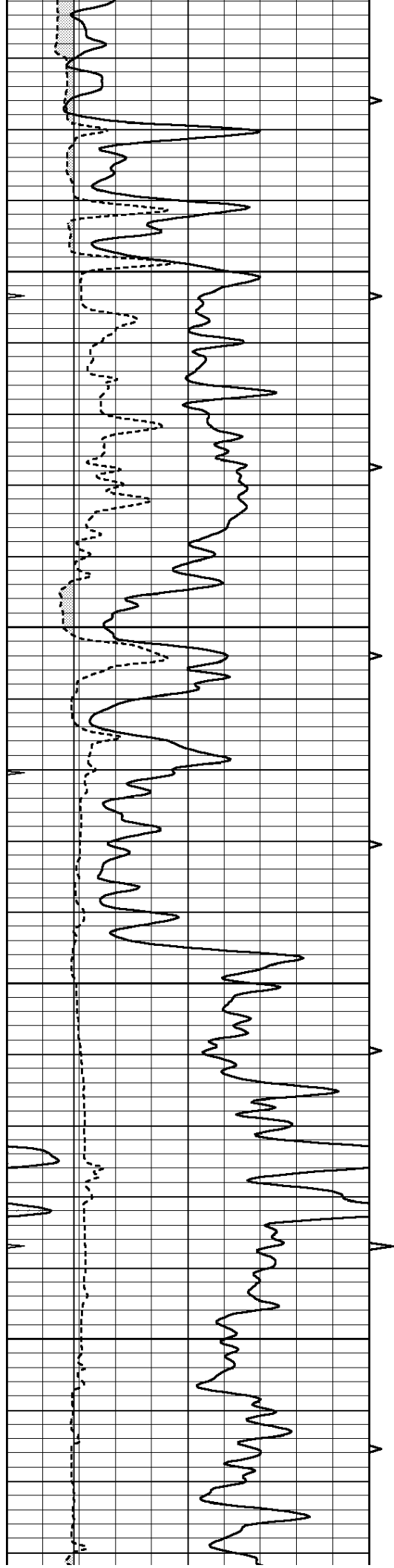
0	GAMMA RAY (GAPI)	150	ABHV	140	DELTA TIME (usec/ft)	40
6	CALIPER (in)	16	10 (ft3) 0	30	SONIC POROSITY (pu)	-10
0	MINMK	20	TBHV	0	ITT (msec)	20
			0 (ft3) 10			









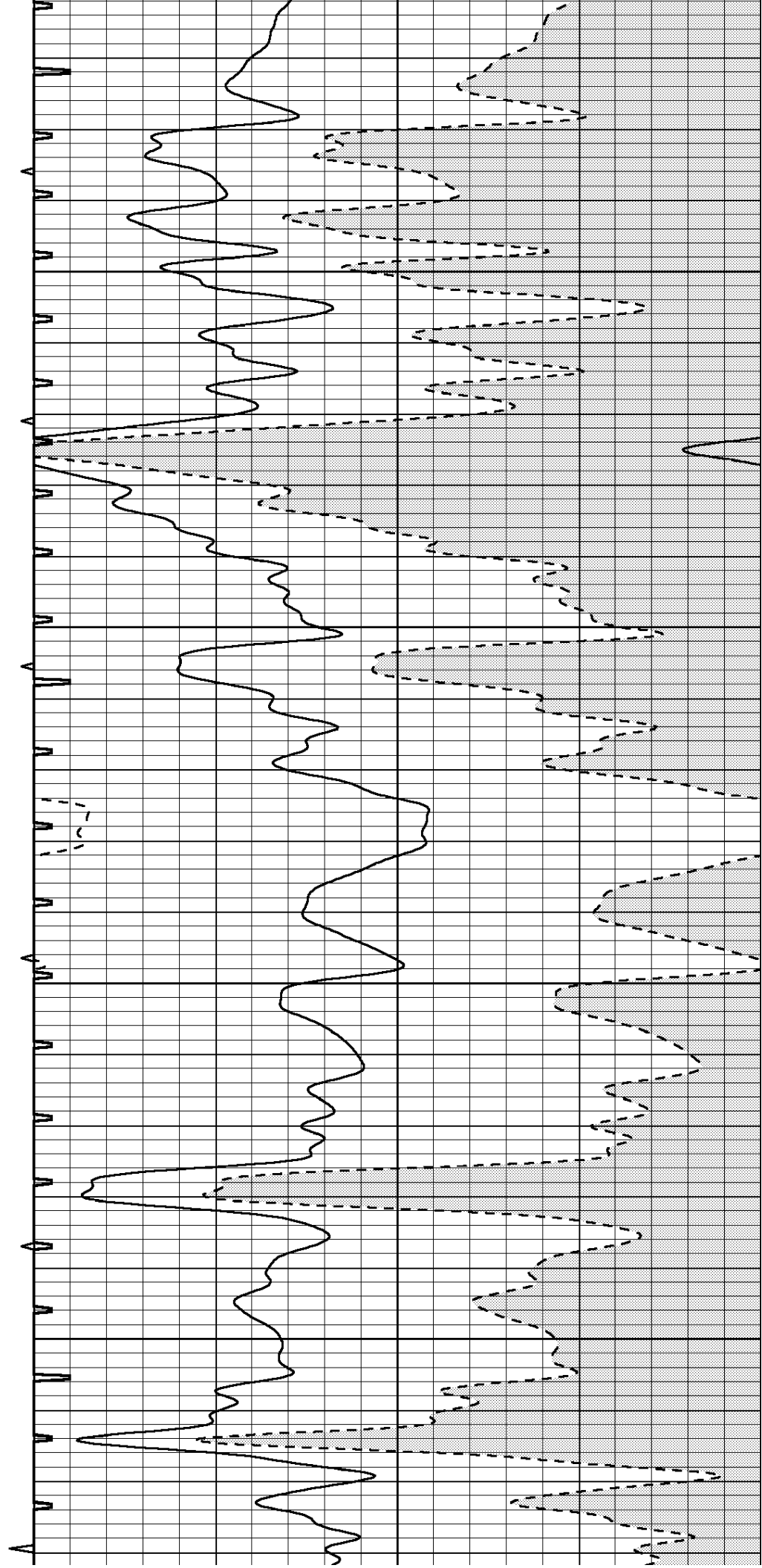


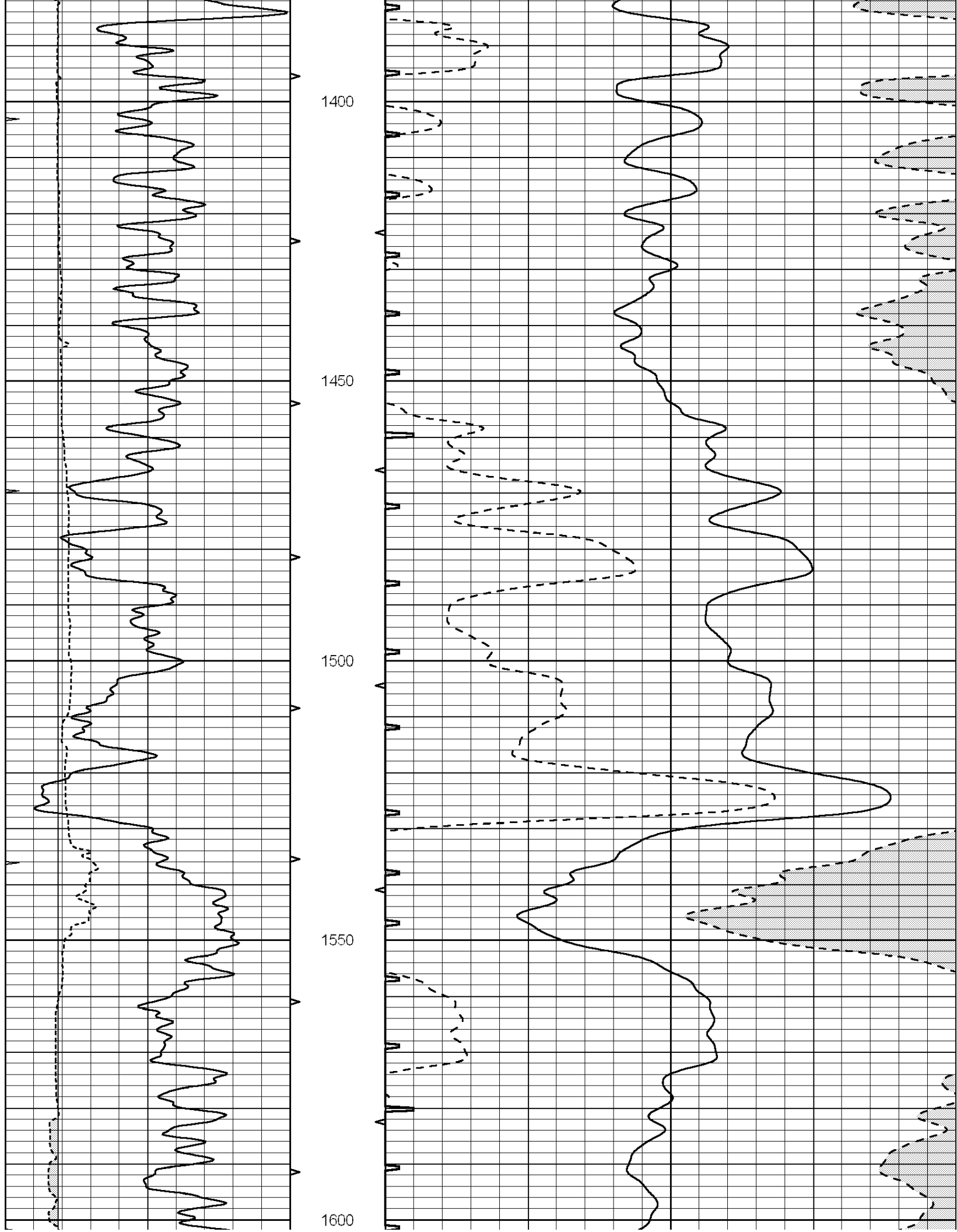
1200

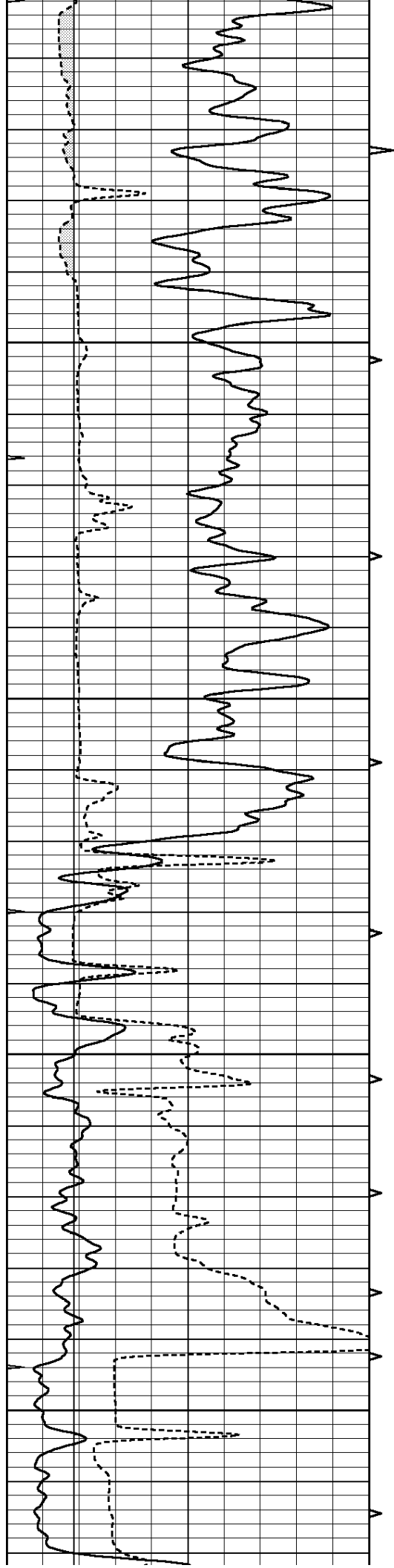
1250

1300

1350





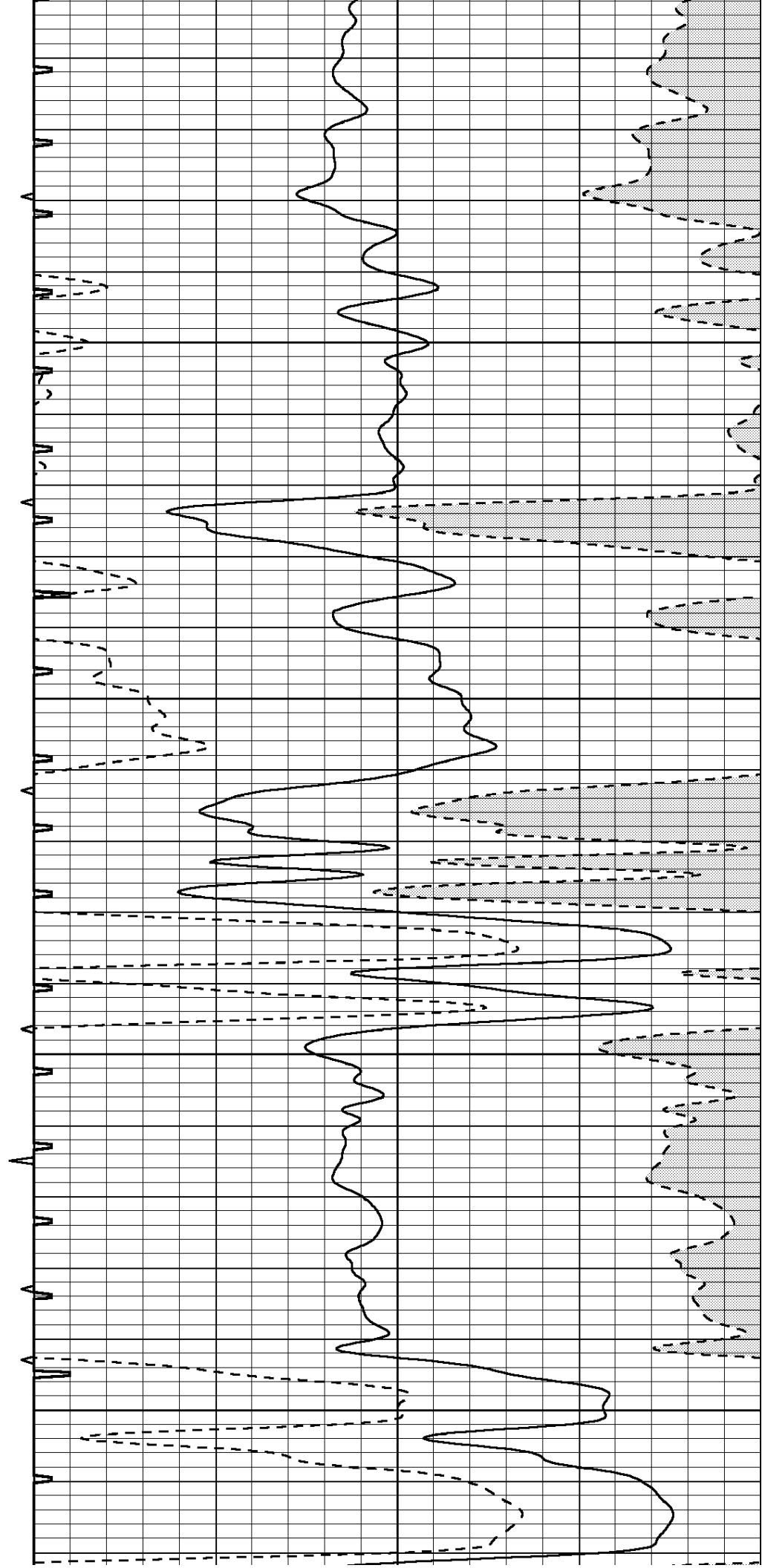


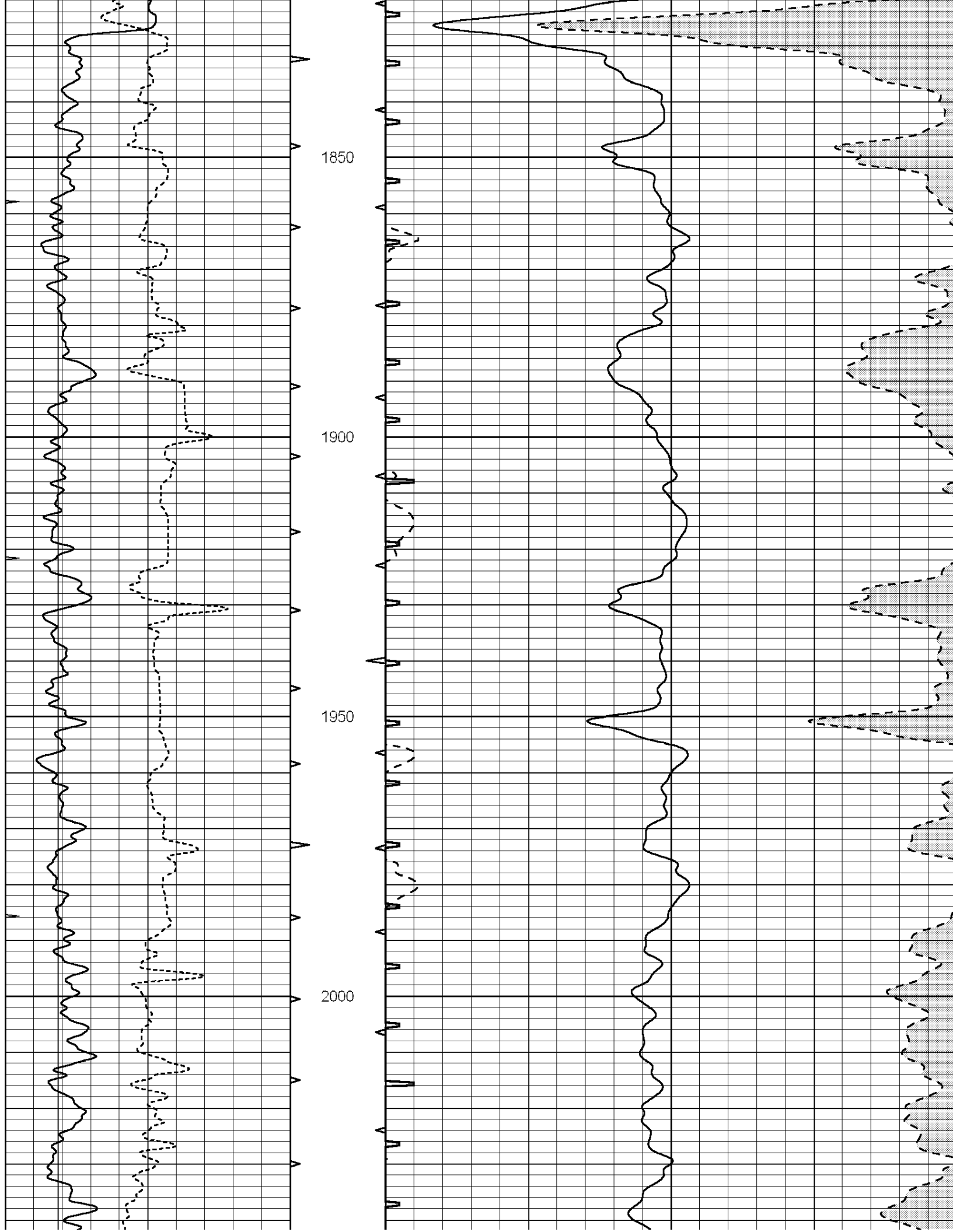
1650

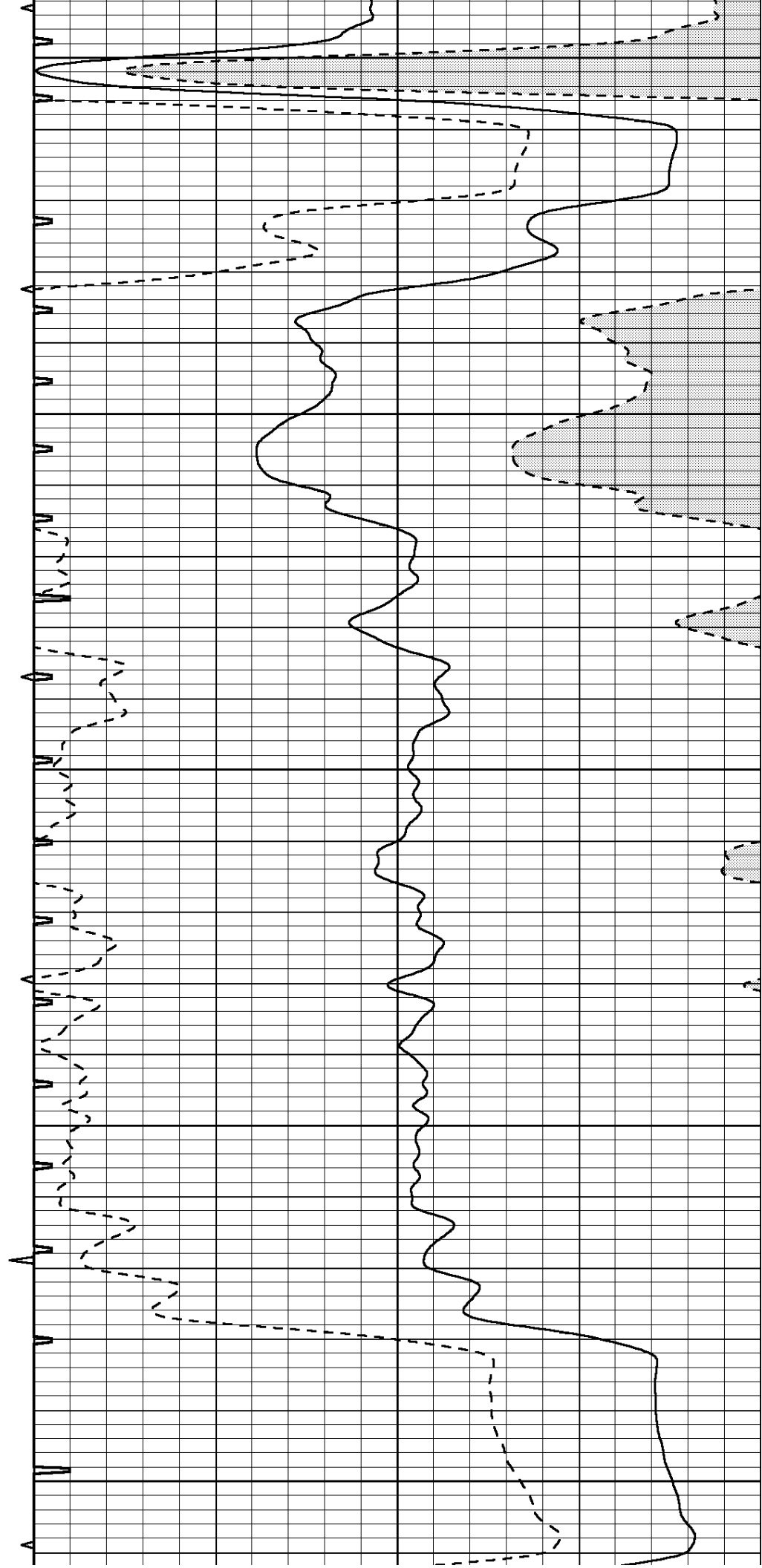
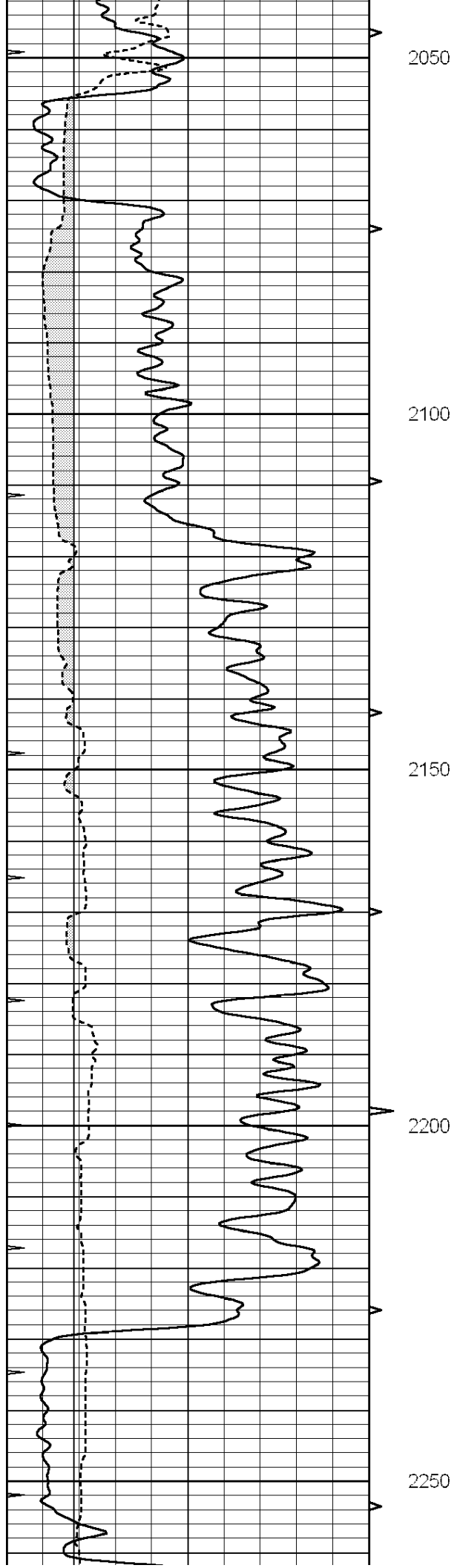
1700

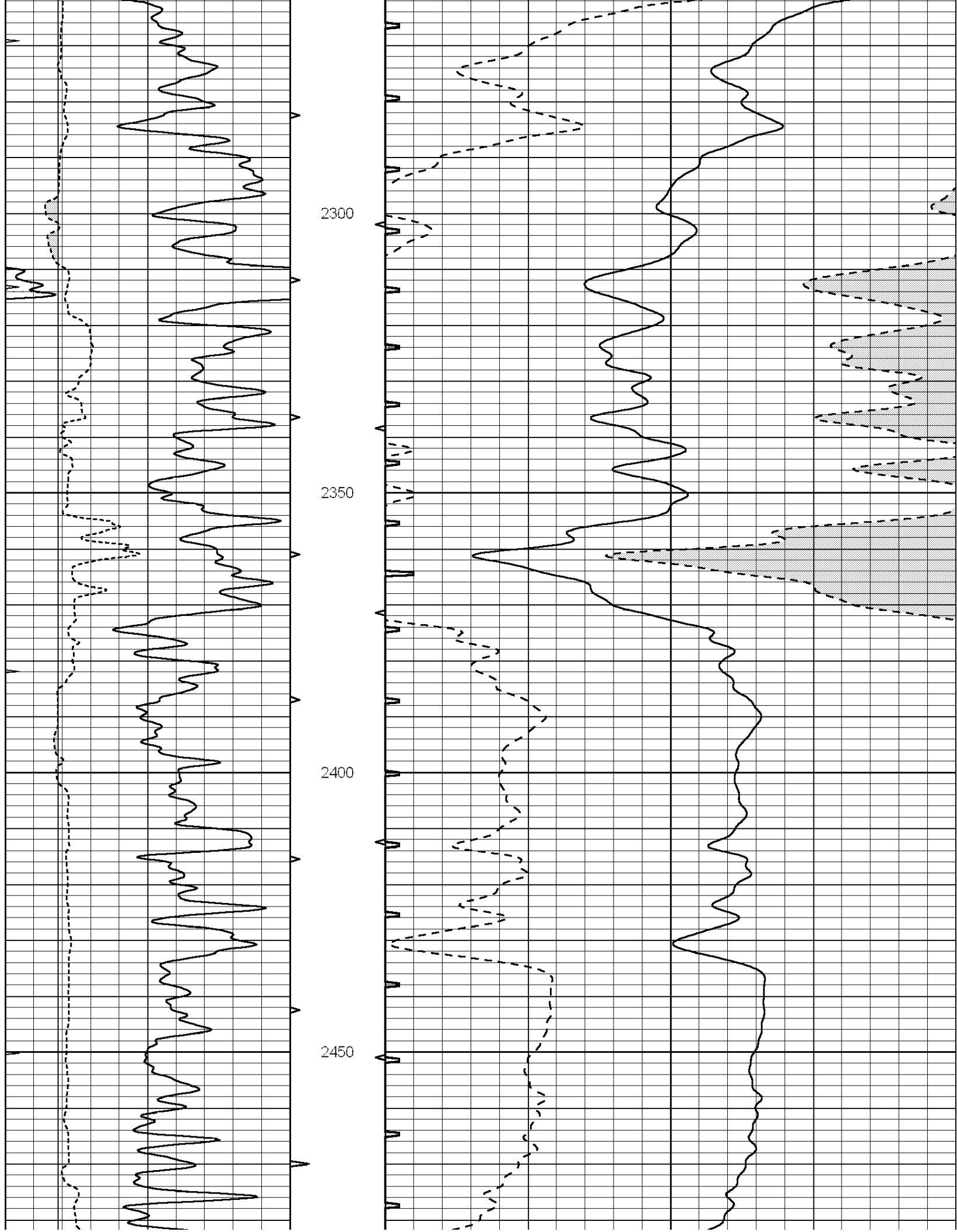
1750

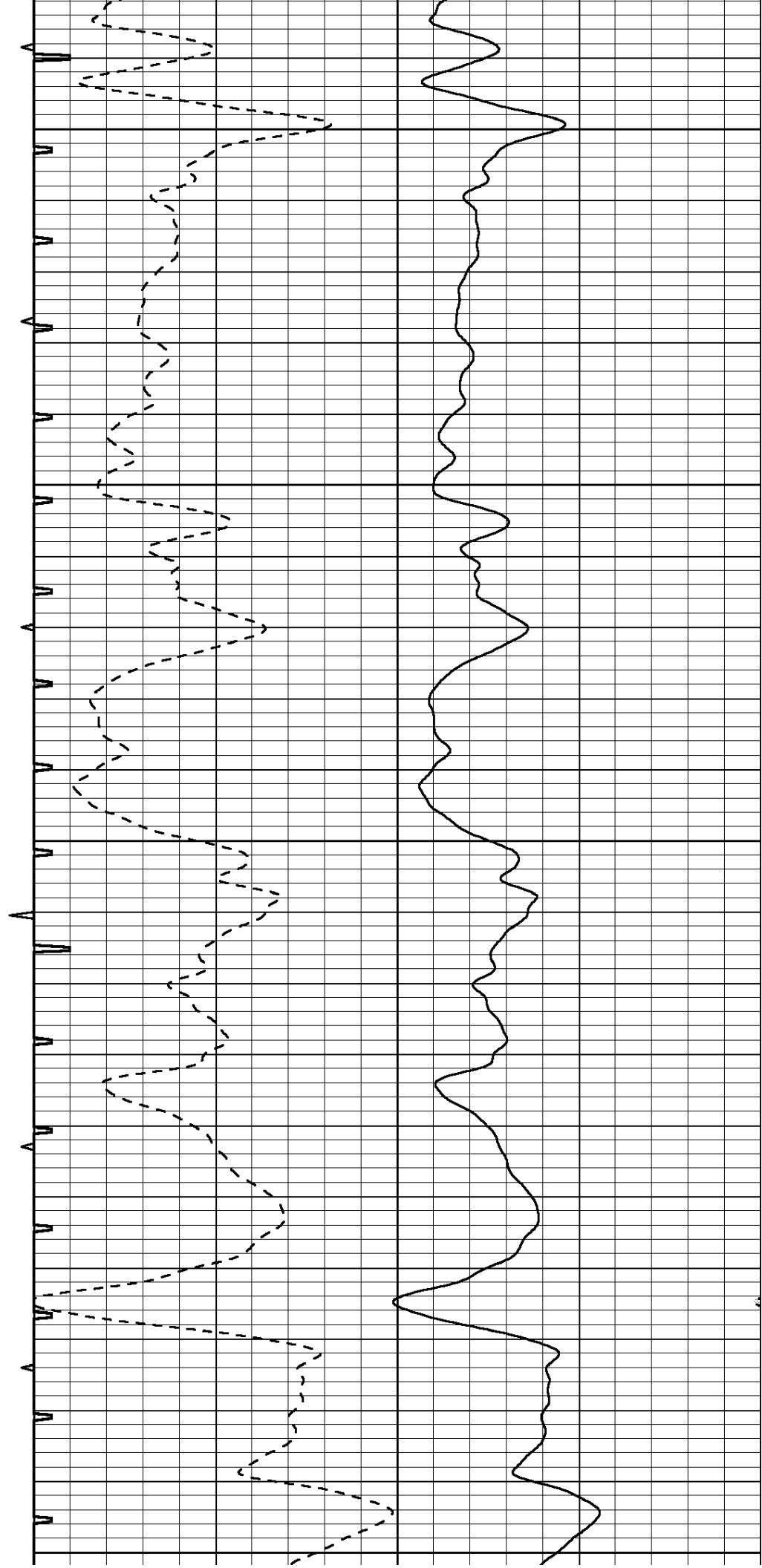
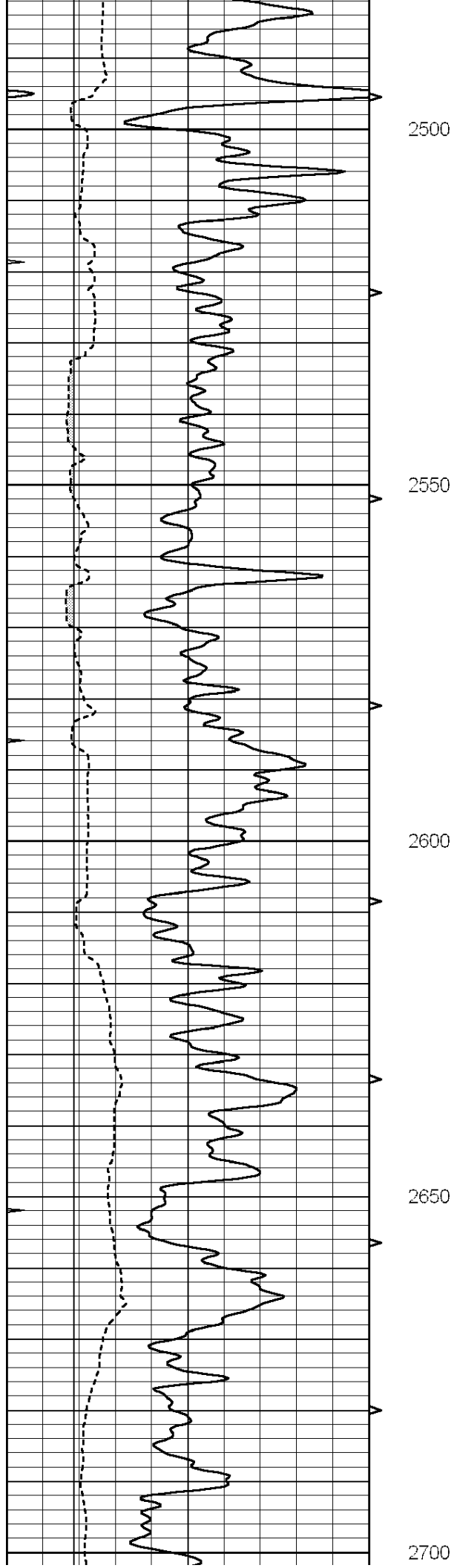
1800

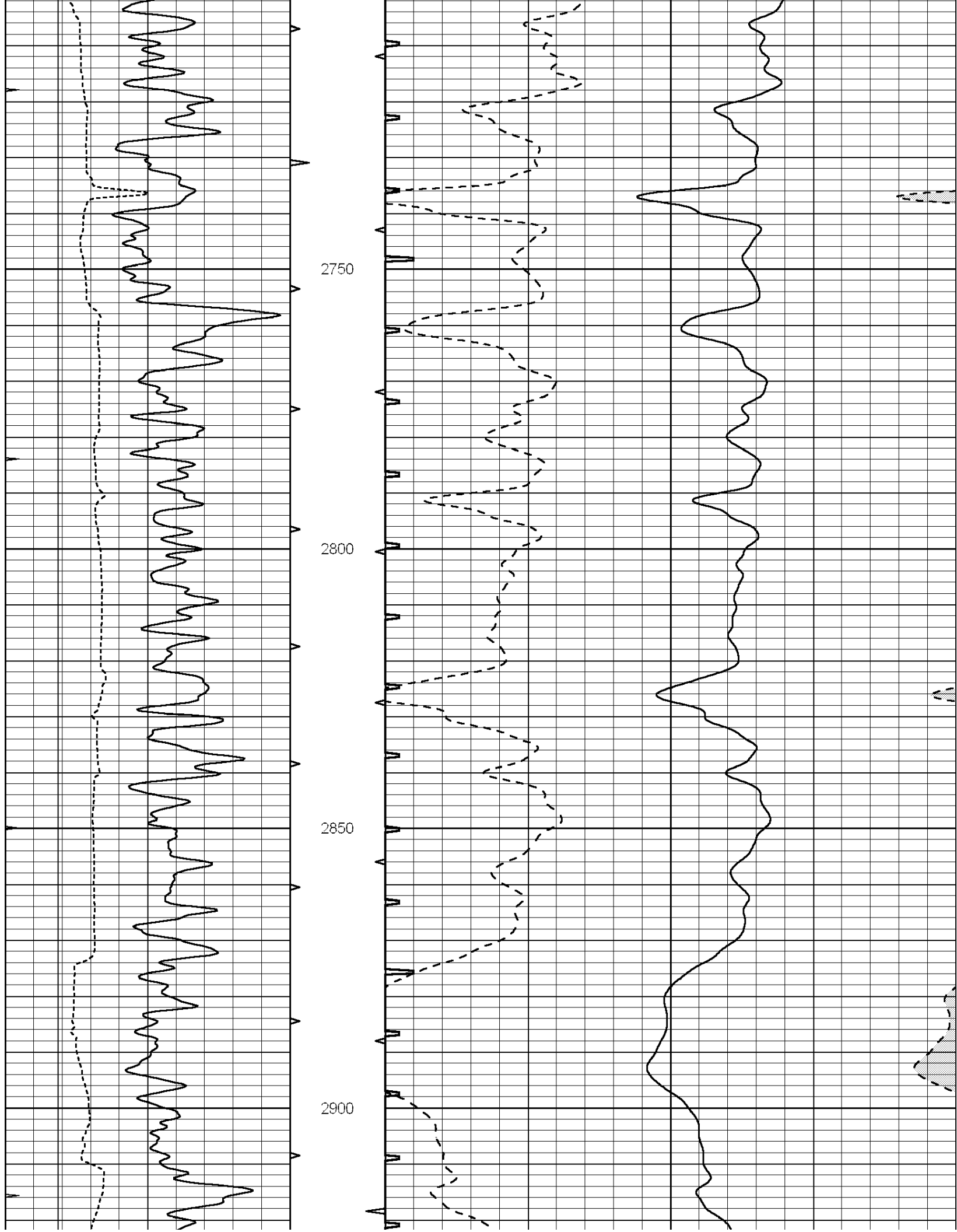


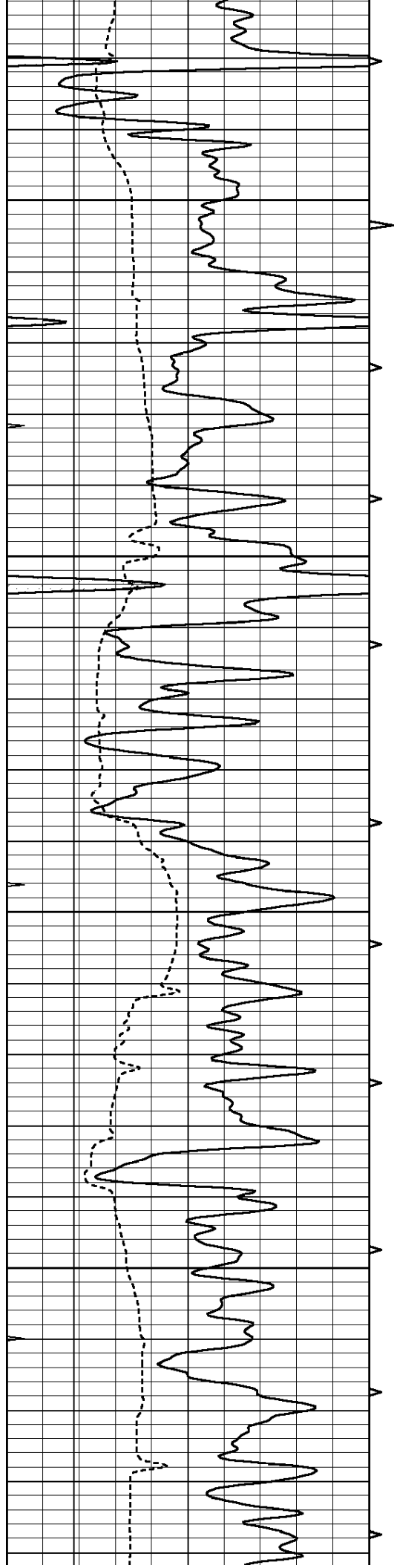










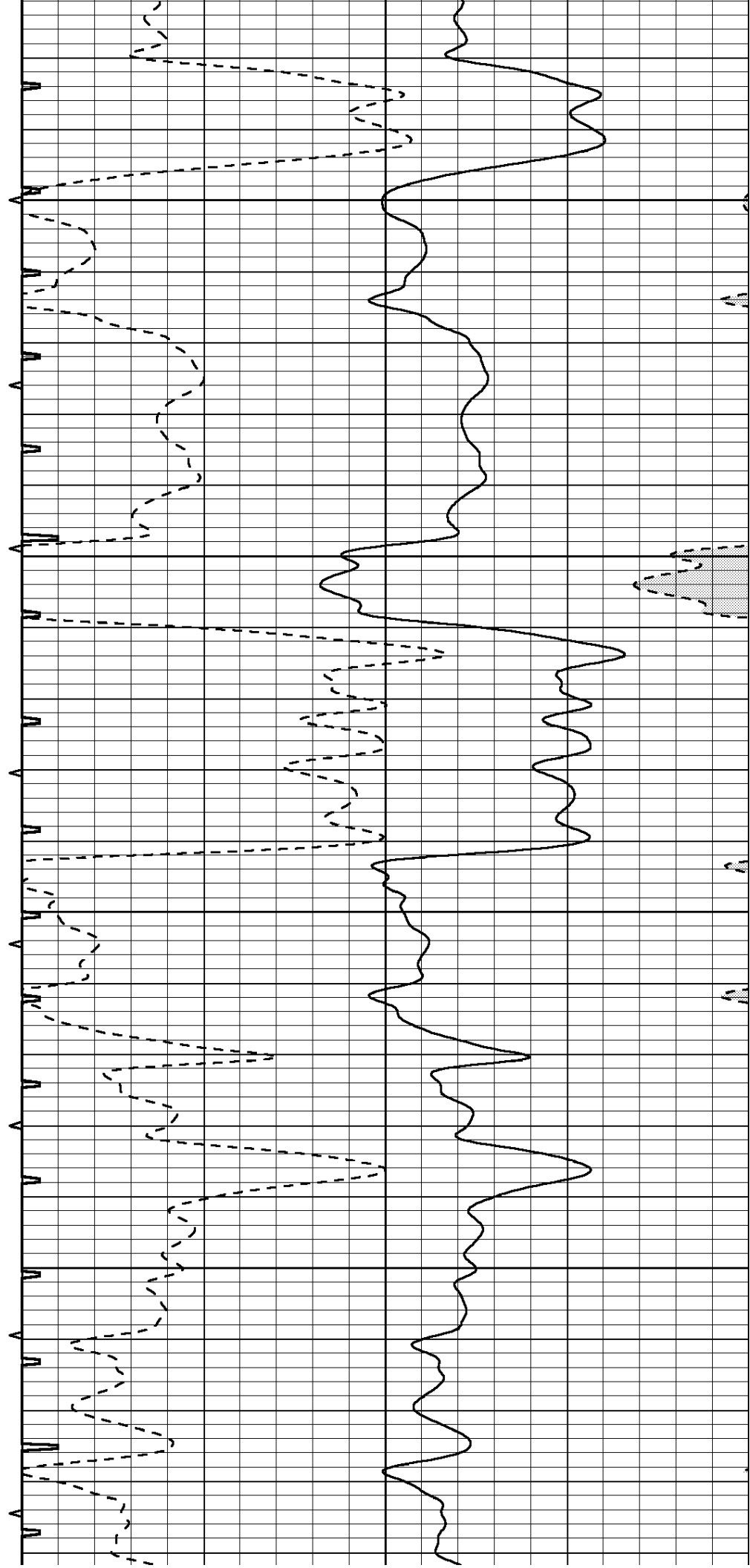


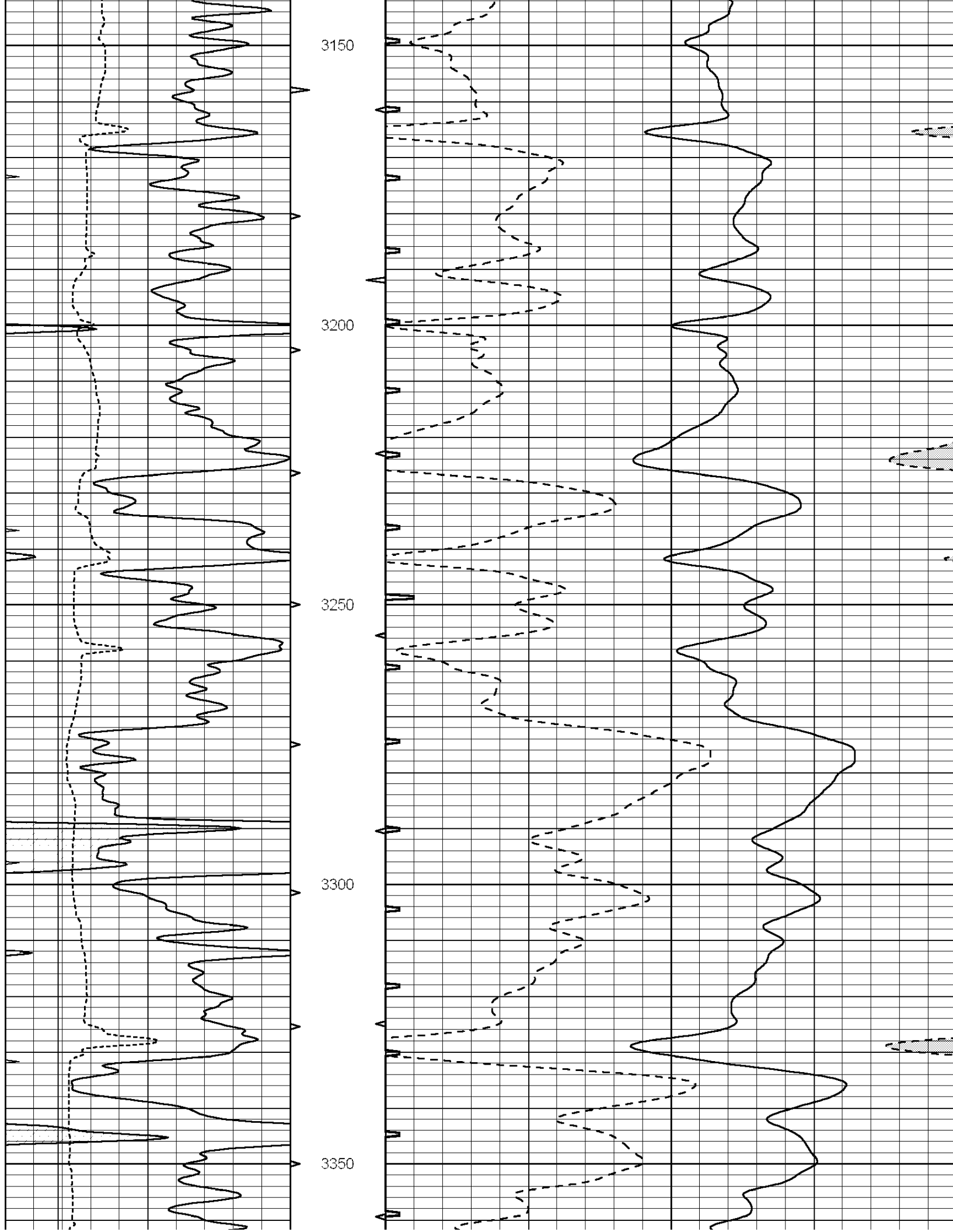
2950

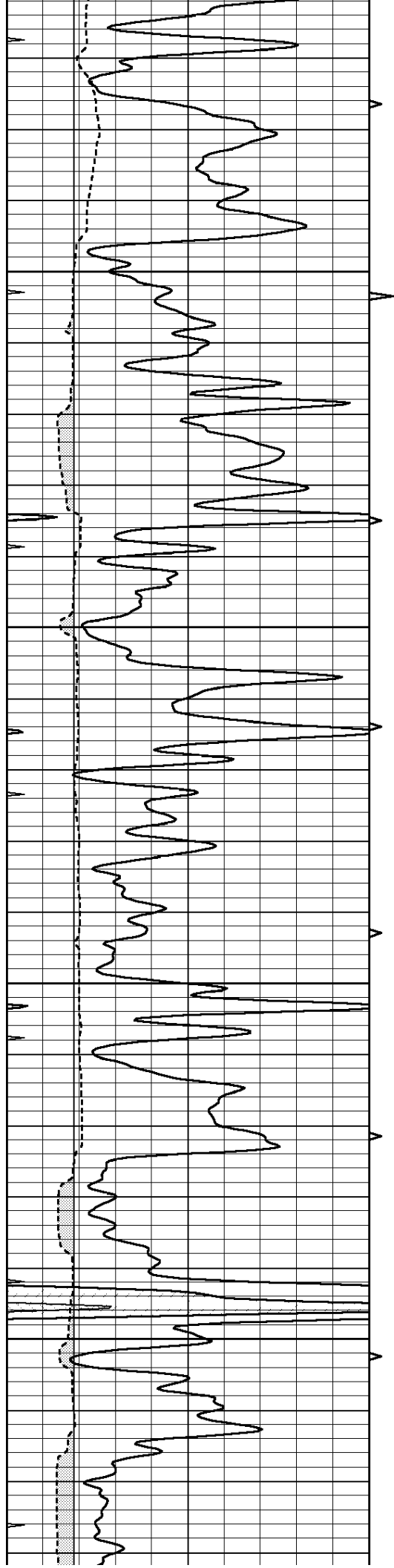
3000

3050

3100





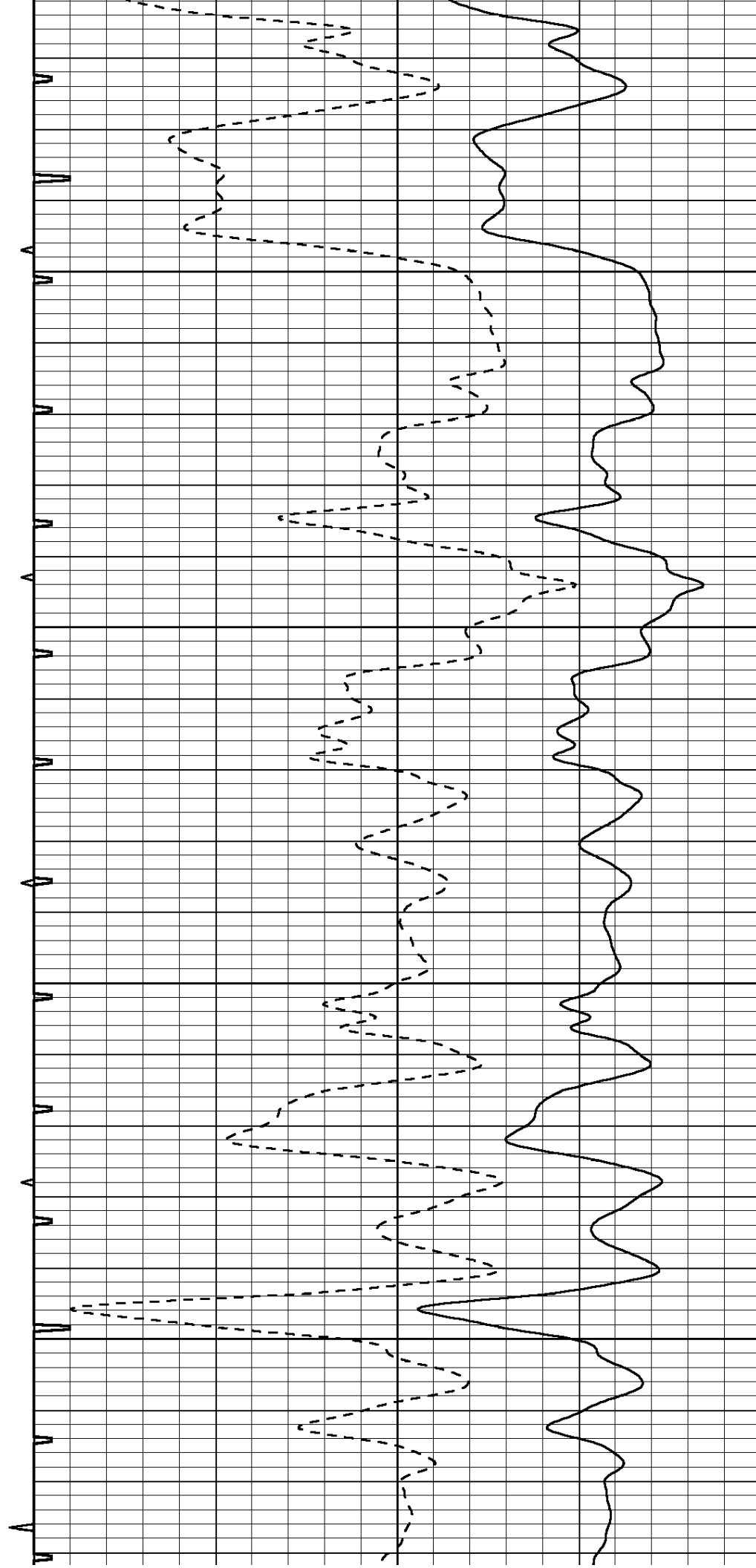


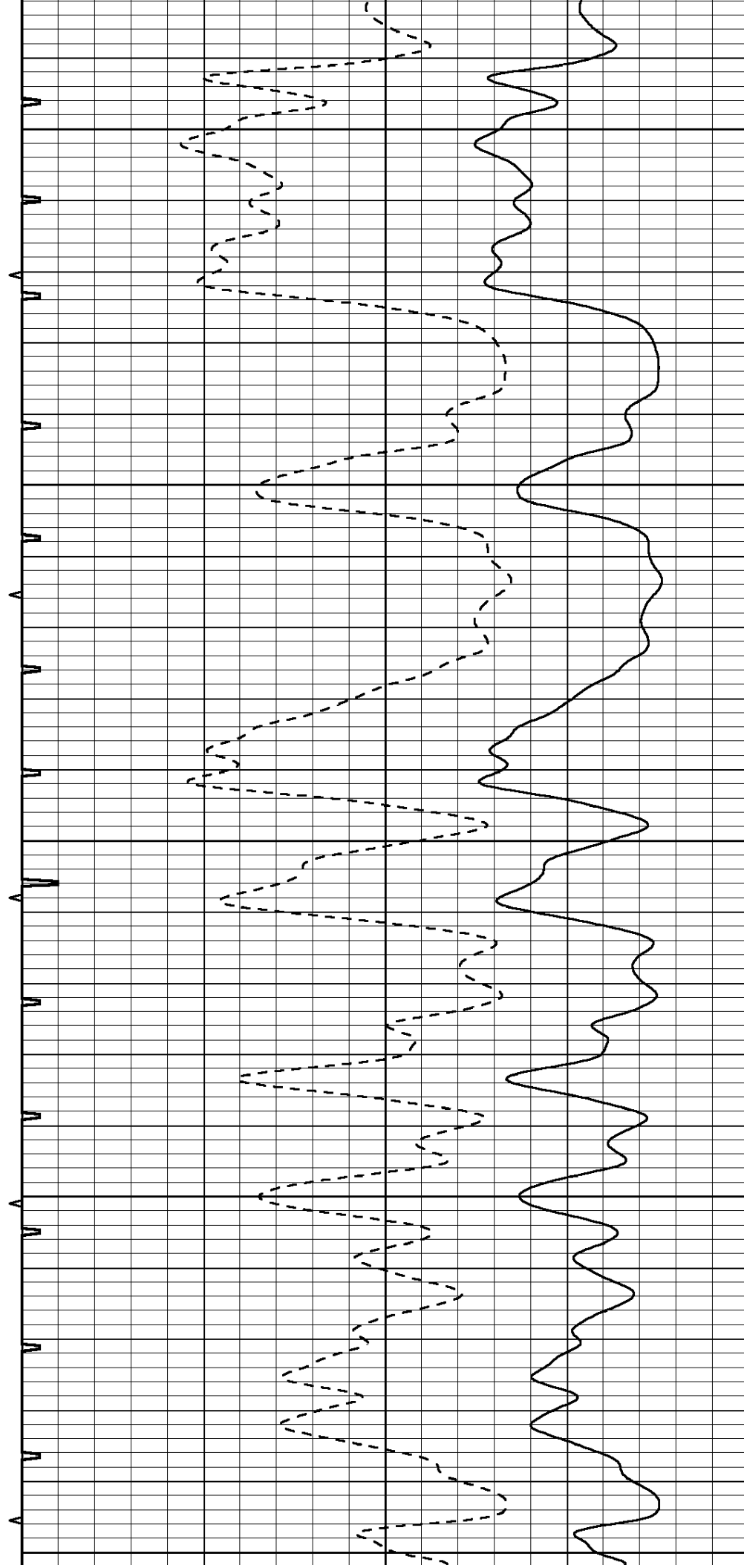
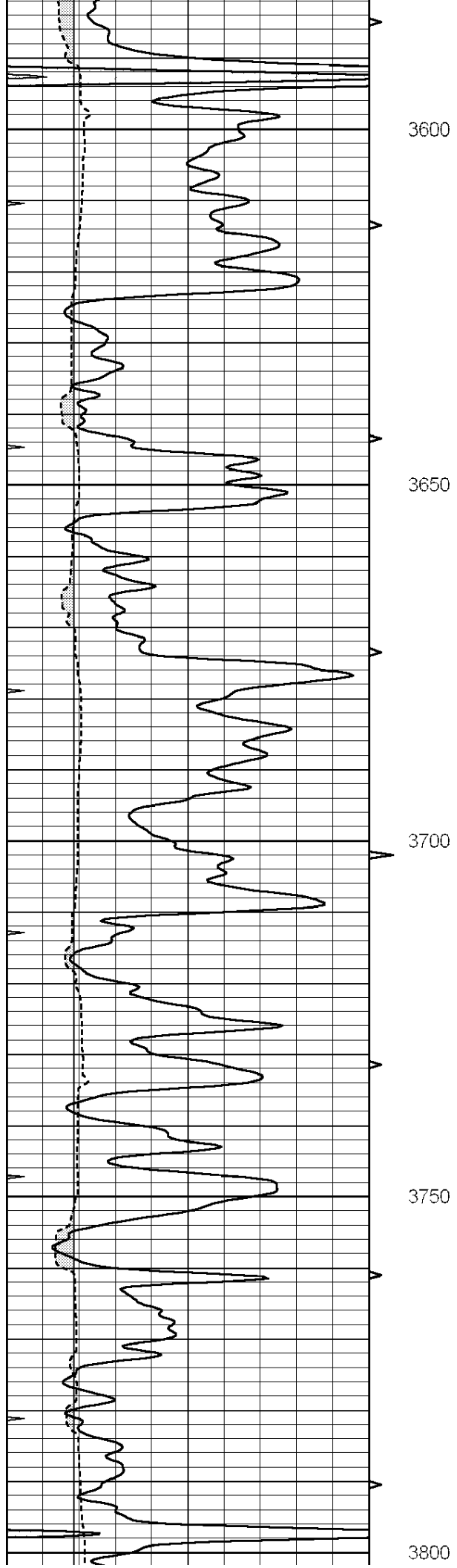
3400

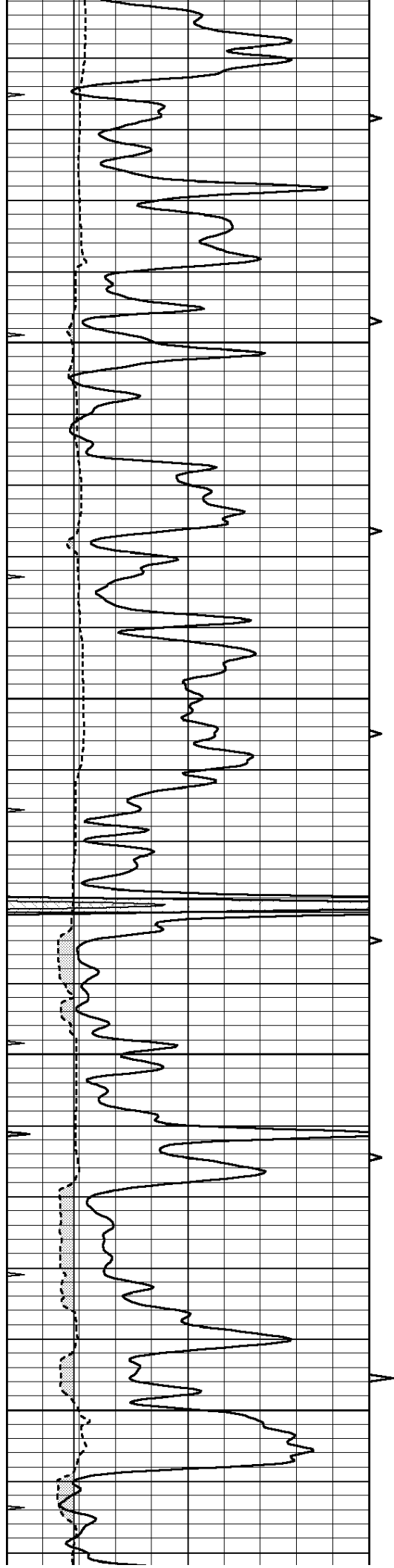
3450

3500

3550





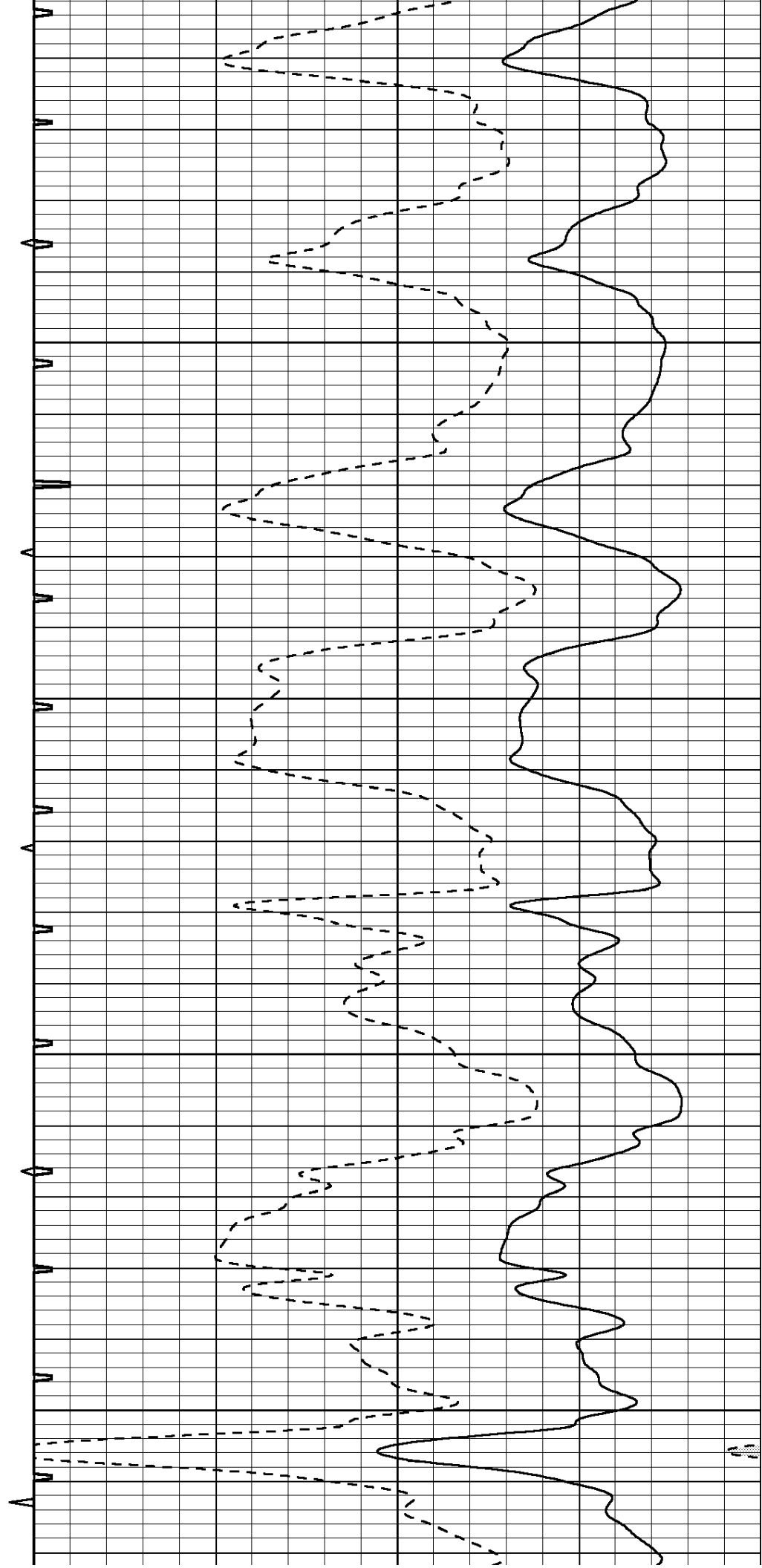


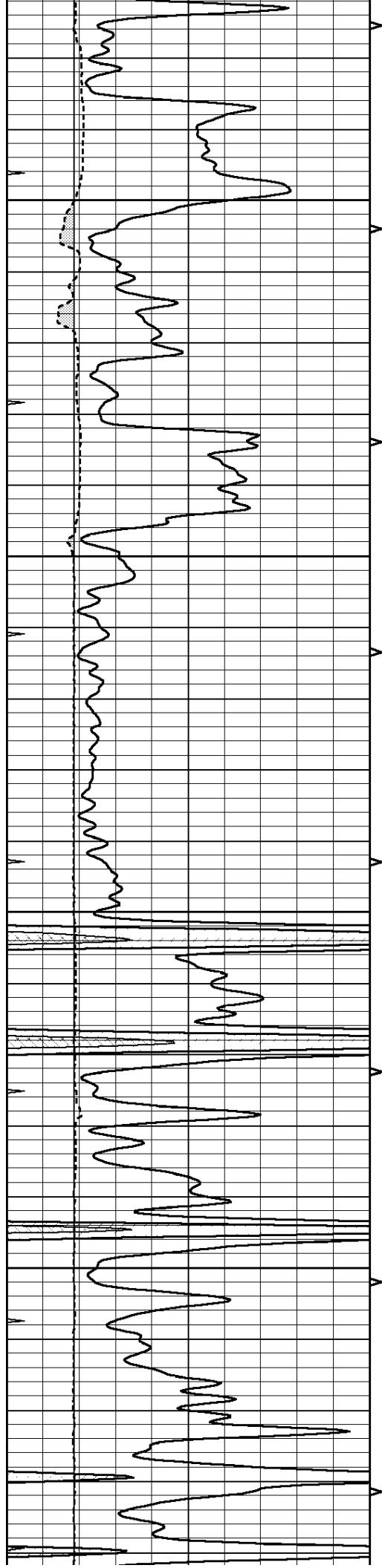
3850

3900

3950

4000



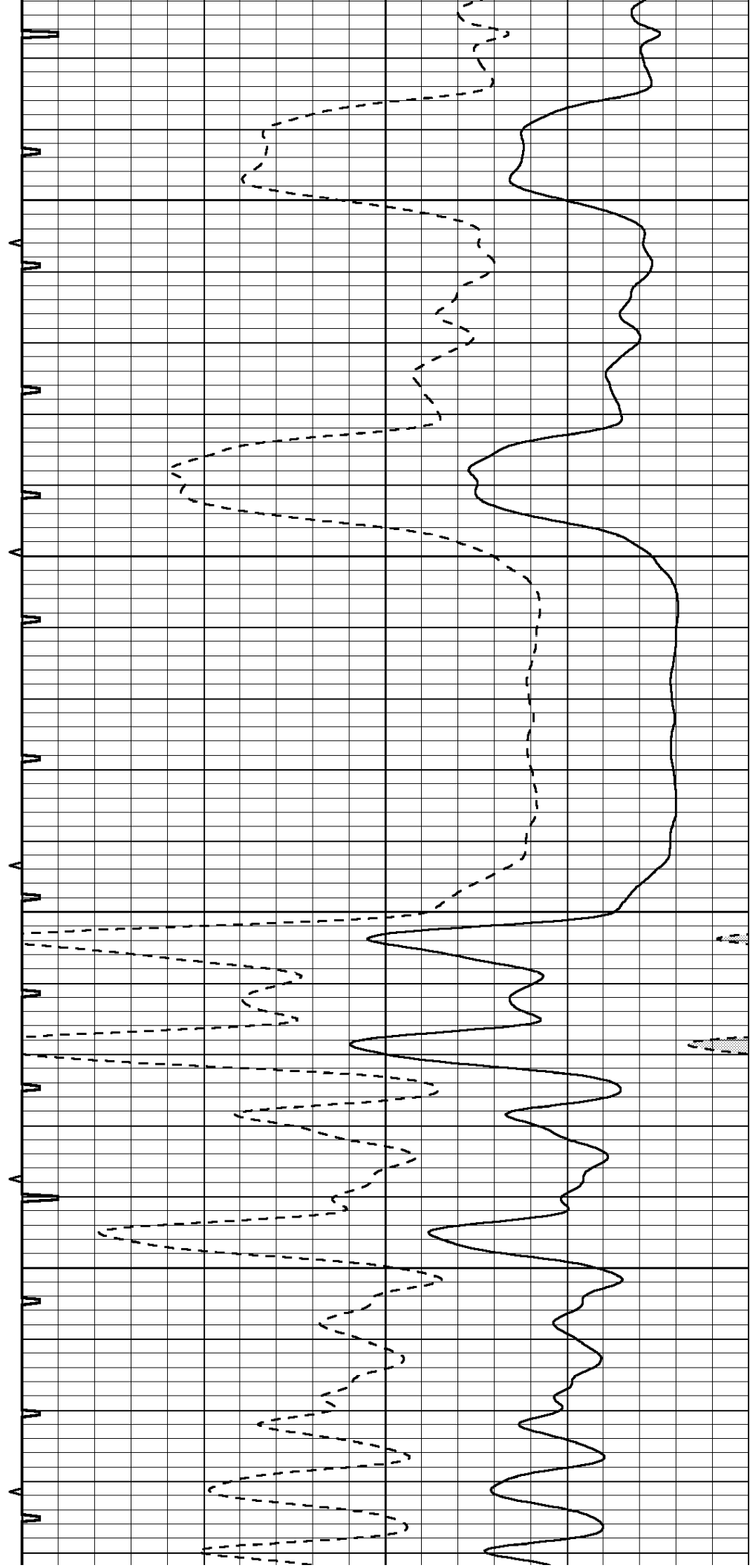


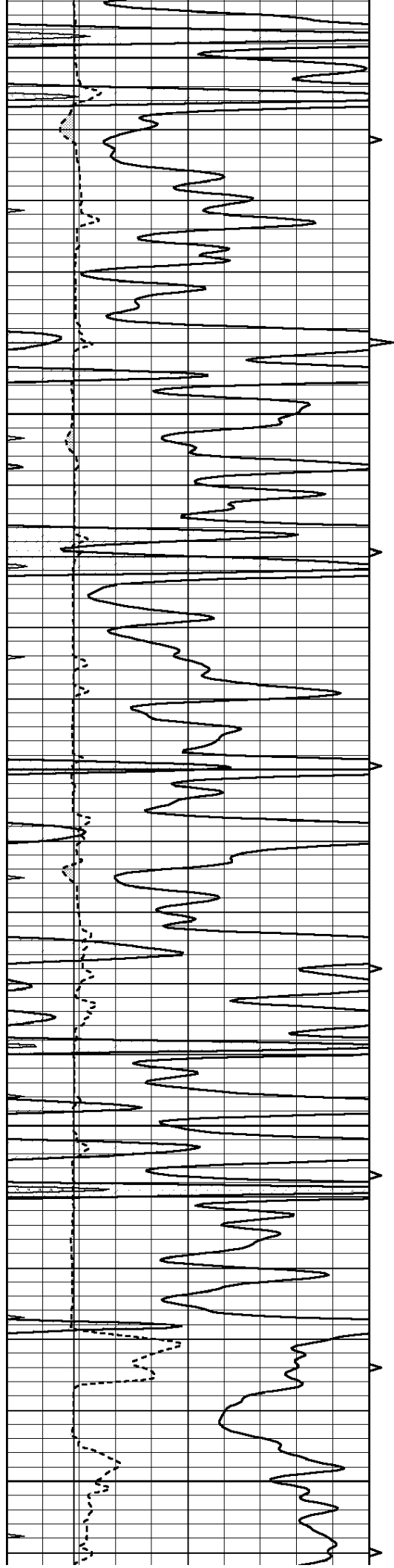
4050

4100

4150

4200





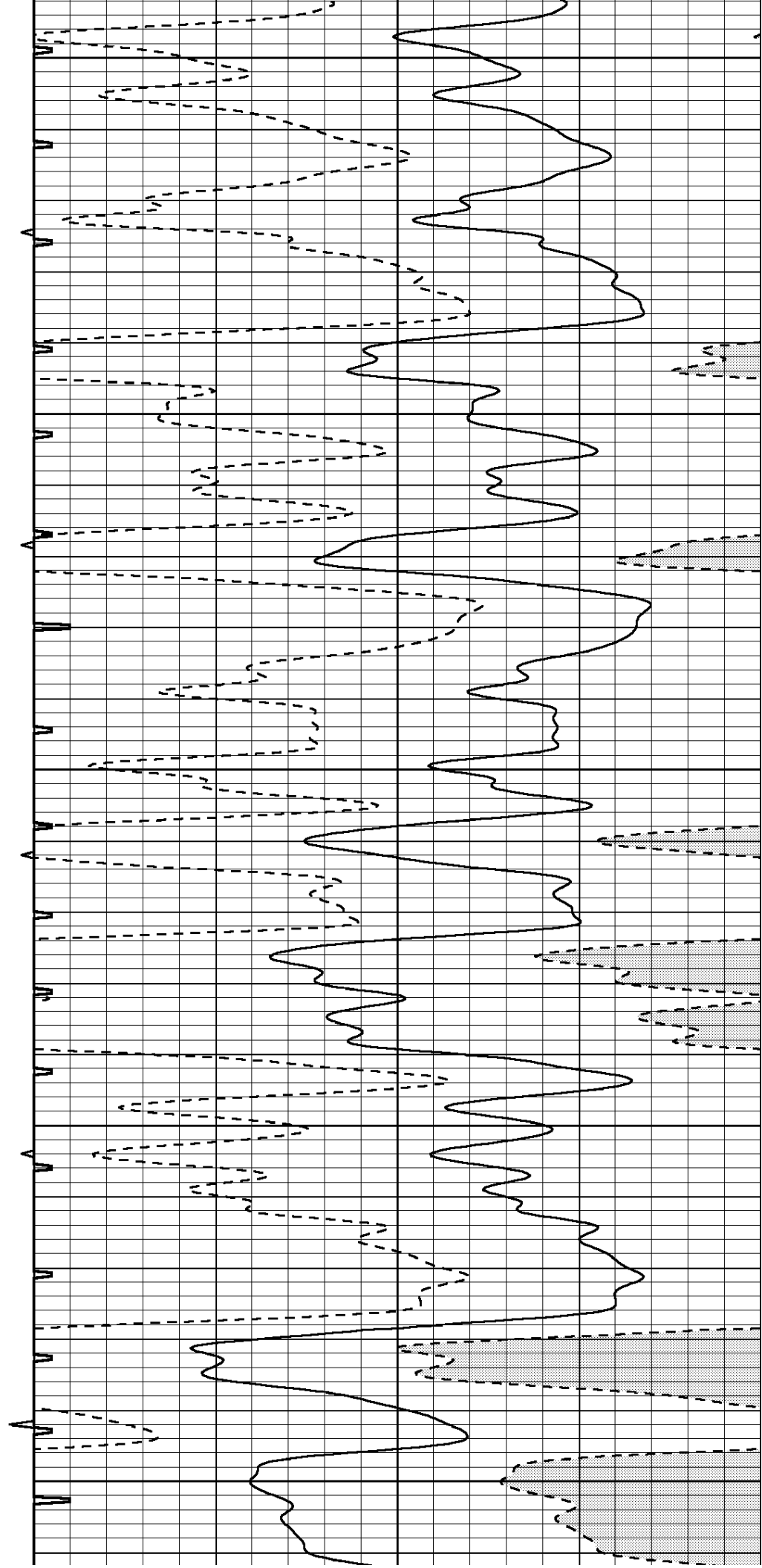
4250

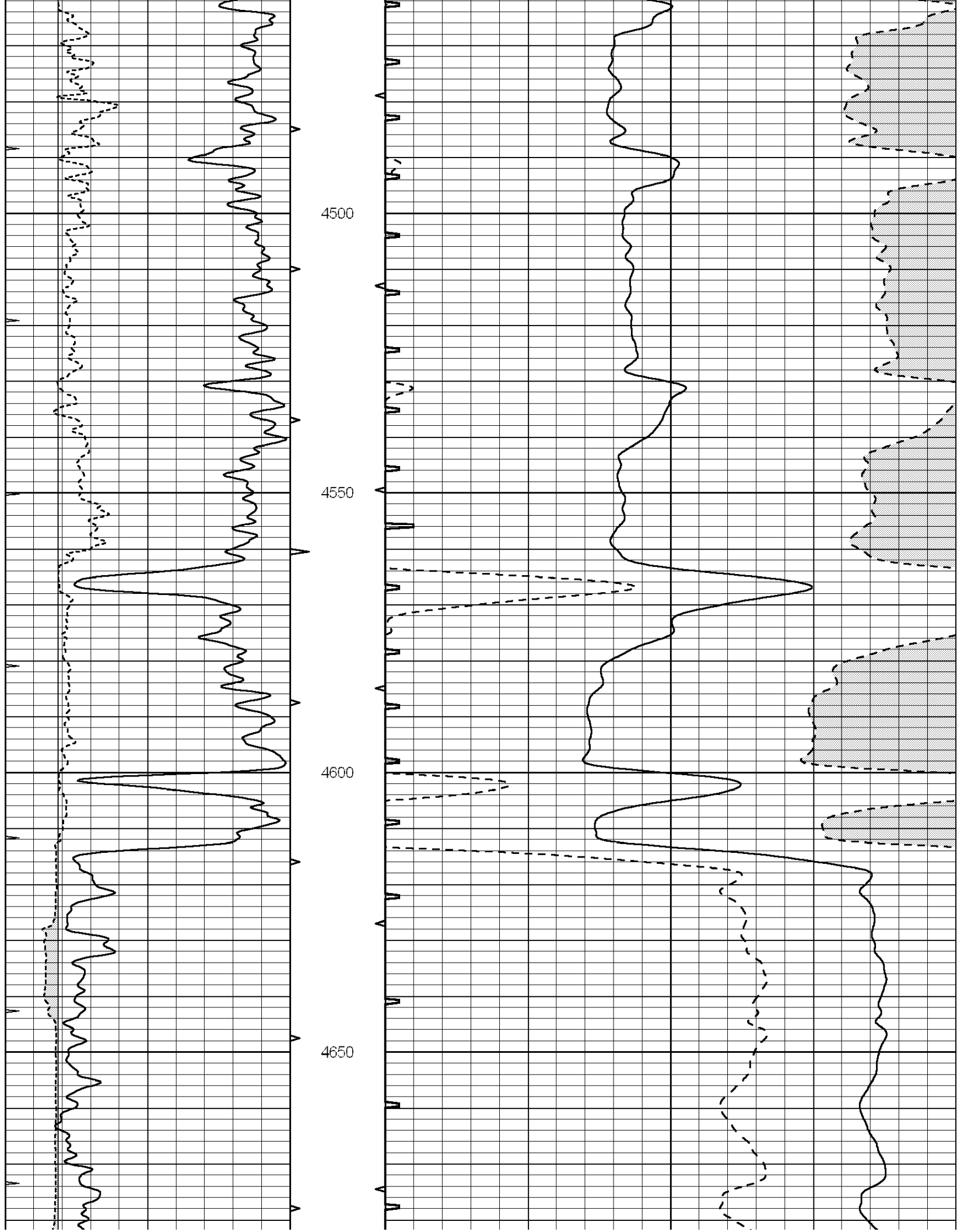
4300

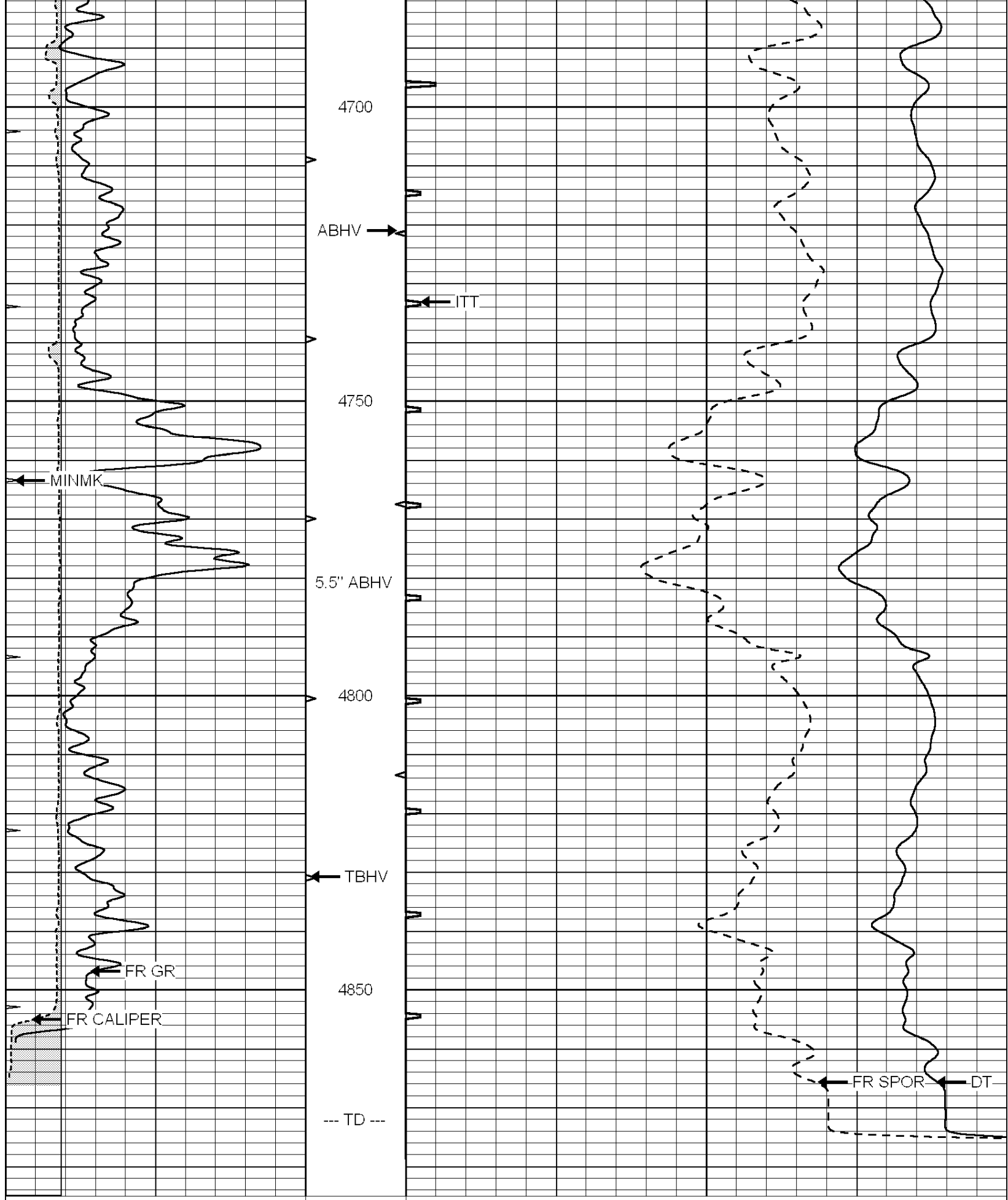
4350

4400

4450







0	GAMMA RAY (GAPI)	150	ABHV	140	DELTA TIME (usec/ft)	40
6	CALIPER (in)	16	10 (ft3)	0 30	SONIC POROSITY (pu)	-10
0	MINMK	20	TBHV	0	ITT (msec)	20
0			0 (ft3)	10		

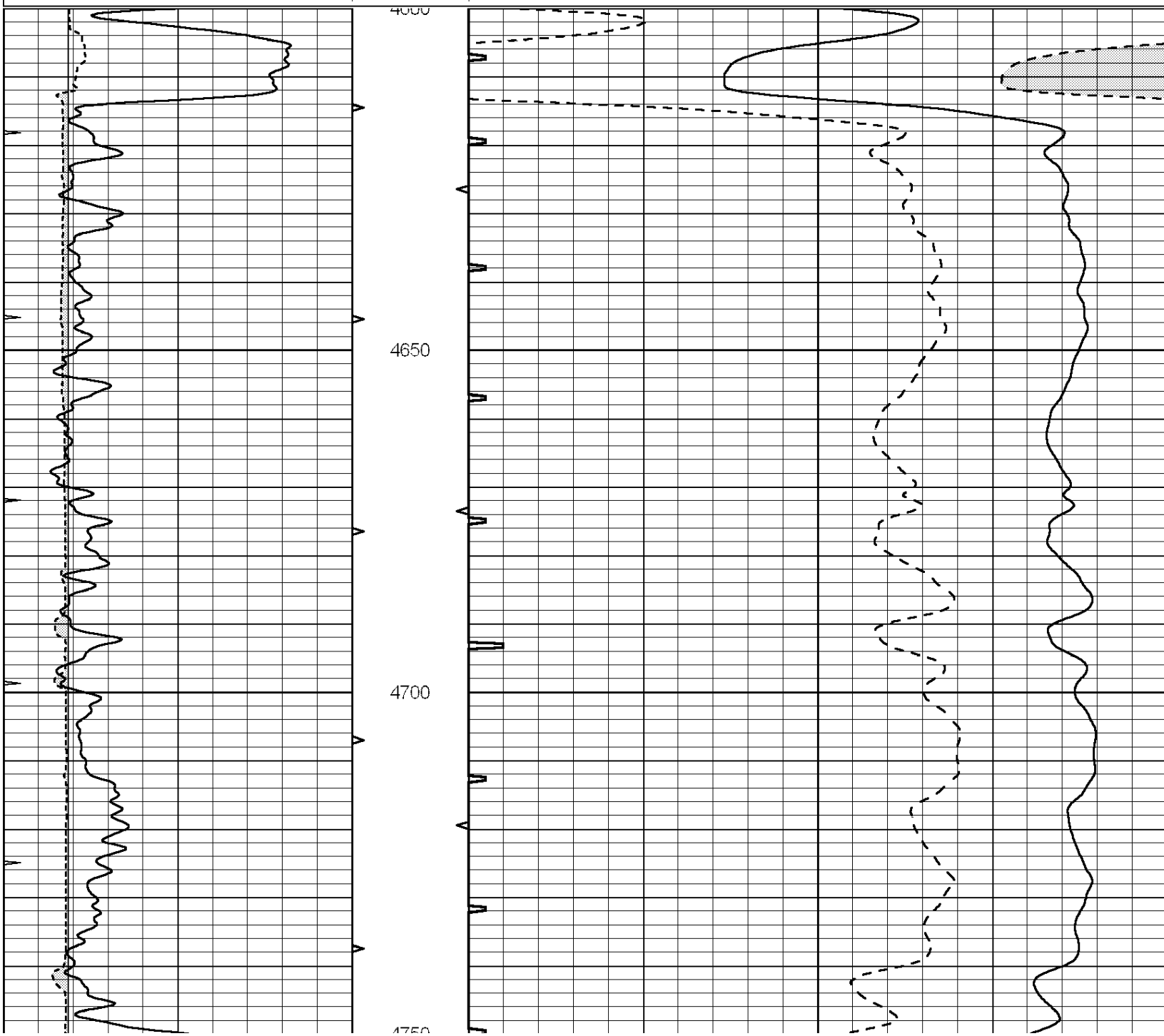


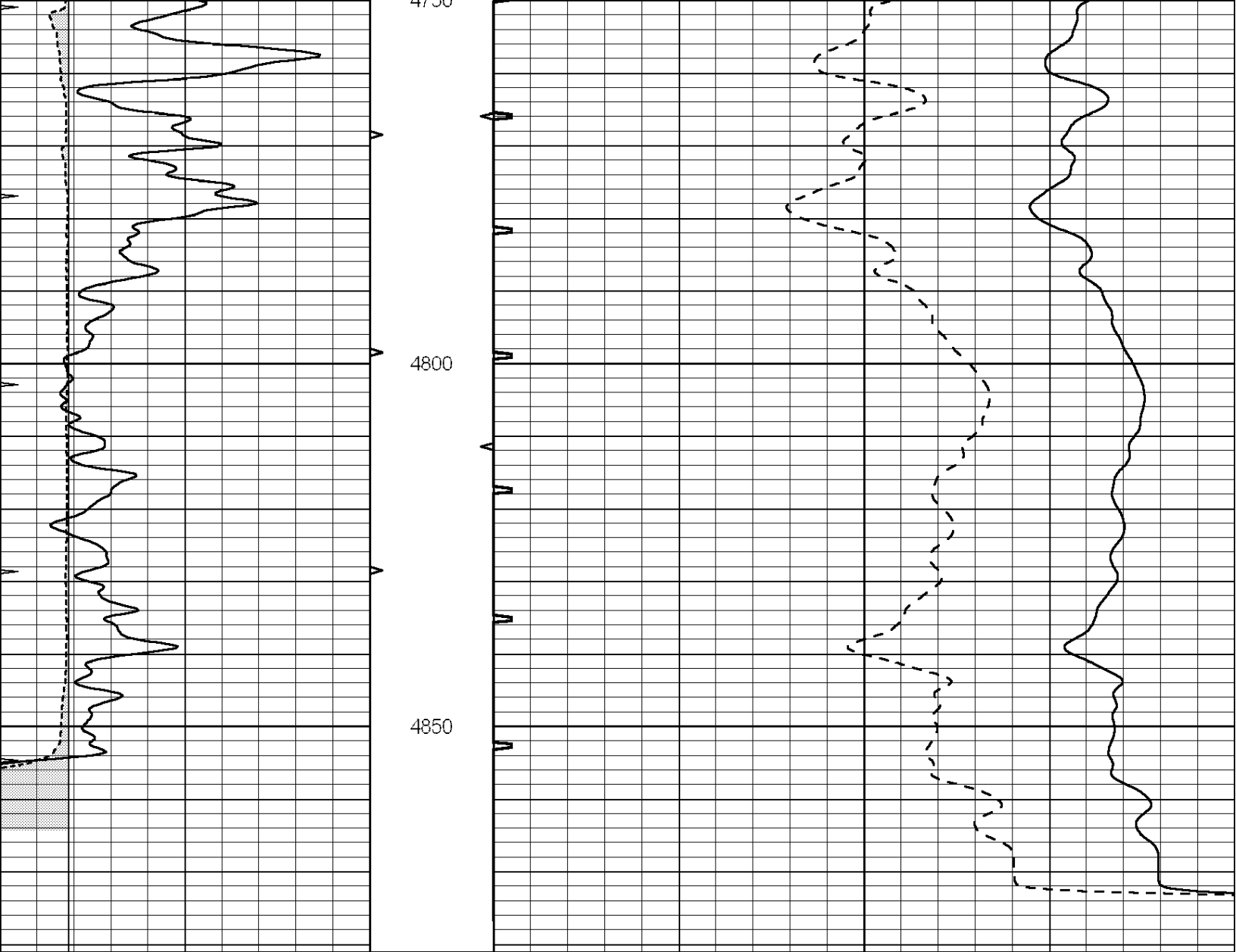
SUPERIOR
Hays,
Kansas

REPEAT SECTION

Database File: 005915pdm.db
Dataset Pathname: pass5.B
Presentation Format: slt
Dataset Creation: Tue Nov 09 18:34:07 2010 by Calc Open-Cased 090629
Charted by: Depth in Feet scaled 1:240

0	GAMMA RAY (GAPI)	150	ABHV	140	DELTA TIME (usec/ft)	40	
6	CALIPER (in)	16	10 (ft3)	0	30	SONIC POROSITY (pu)	-10
0	MINMK	20	TBHV	0	ITT (msec)	20	
			0 (ft3)	10			





0	GAMMA RAY (GAPI)	150	ABHV	140	DELTA TIME (u sec/ft)	40
6	CALIPER (in)	16	10 (ft3) 0	30	SONIC POROSITY (pu)	-10
0	MINMK	20	TBHV	0	ITT (msec)	20
			0 (ft3) 10			