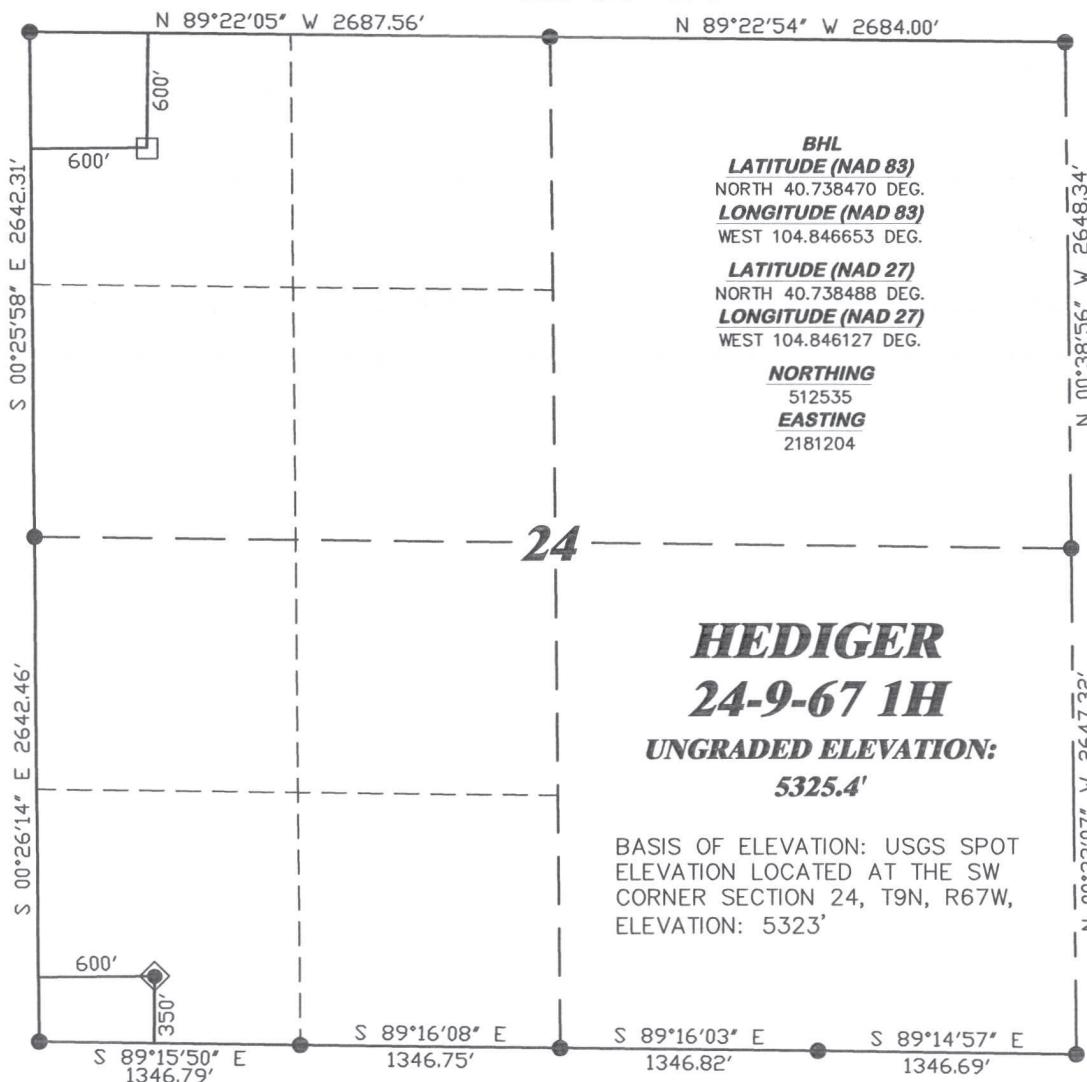


**R. 67 W.**



SCALE 1" = 1000'

**T. 9 N.**

**BHL**  
**LATITUDE (NAD 83)**  
NORTH 40.738470 DEG.  
**LONGITUDE (NAD 83)**  
WEST 104.846653 DEG.

**LATITUDE (NAD 27)**  
NORTH 40.738488 DEG.  
**LONGITUDE (NAD 27)**  
WEST 104.846127 DEG.

**NORTHING**  
512535  
**EASTING**  
2181204

**LATITUDE (NAD 83)**  
NORTH 40.726569 DEG.  
**LONGITUDE (NAD 83)**  
WEST 104.846650 DEG.

**LATITUDE (NAD 27)**  
NORTH 40.726587 DEG.  
**LONGITUDE (NAD 27)**  
WEST 104.846124 DEG.

**NORTHING**  
508199.31  
**EASTING**  
2181237.04

**24**  
**HEDIGER**  
**24-9-67 1H**  
**UNGRADED ELEVATION:**  
**5325.4'**

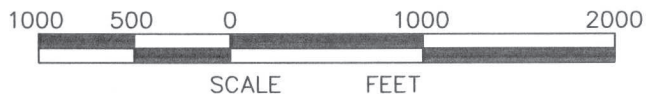
BASIS OF ELEVATION: USGS SPOT  
ELEVATION LOCATED AT THE SW  
CORNER SECTION 24, T9N, R67W,  
ELEVATION: 5323'

**BASIS OF BEARING/DATUM**  
SPCS CO NORTH NAD 27  
BASED ON NGS TRIANGULATION  
STATION "DOVER"

**NOTES**

PRAIRIE LANDS  
EXISTING FENCE & COUNTY ROAD  
WITHIN 400' RADIUS OF WELL SITE.

GPS OPERATOR PAUL ORME  
OBSERVED A PDOF OF 2.4.  
ALL GPS OBSERVATIONS ARE IN  
COMPLIANCE WITH COGCC RULE No.215.

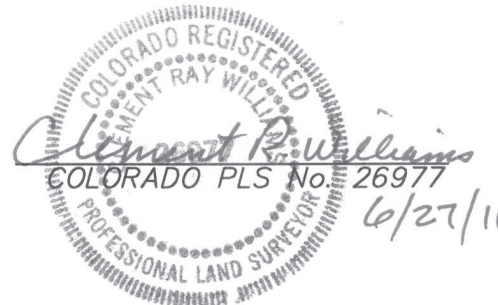


**SURVEYOR'S STATEMENT**

I, CLEMENT R. WILLIAMS, OF ROCK SPRINGS, WYOMING, HEREBY STATE: THIS MAP WAS MADE FROM NOTES TAKEN DURING AN ACTUAL FIELD SURVEY DONE UNDER MY DIRECT SUPERVISION ON JUNE 20, 2011 AND THAT THIS PLAT CORRECTLY SHOWS THE LOCATION OF HEDIGER 24-9-67 1H AS STAKED ON THE GROUND.

**LEGEND**

- ◆ WELL LOCATION
- BOTTOM HOLE LOC. (APPROX)
- FOUND MONUMENT
- ▲ PREVIOUSLY FOUND MONUMENT



**RIFFIN & ASSOCIATES, INC.**  
1414 ELK ST., ROCK SPRINGS, WY 82901

(307) 362-5028

**DRAWN: 6/24/11 - MMM**

**REVISED: NA**

**SCALE: 1" = 1000'**

**DRG JOB No. 18650**

**EXHIBIT 1**

**PLAT OF DRILLING LOCATION  
FOR  
CHESAPEAKE ENERGY, LLC.**

**350' F/SL & 600' F/WL, SWSW, SECTION 24,  
T. 9 N., R. 67 W., 6th P.M.  
WELD COUNTY, COLORADO**