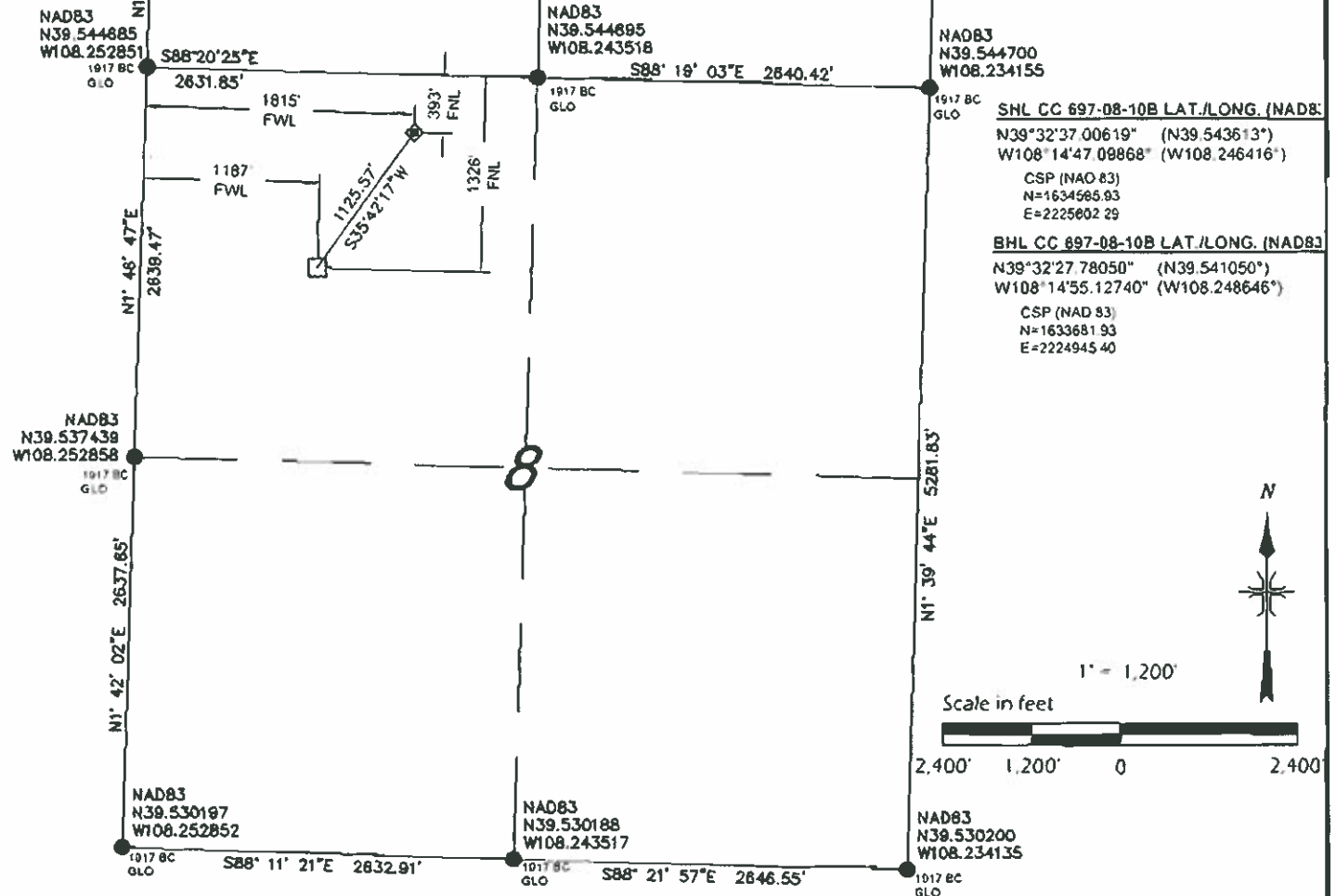


CASCADE CREEK

CC 697-08-10B

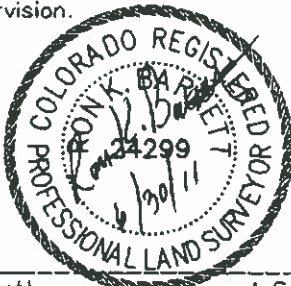
WELL PAD 697-08A

GRADED ELEVATION: 8400.40'



SURVEYORS CERTIFICATE:

This is to certify that this exhibit was prepared and location as shown was staked on the ground from actual surveys made by me or under my direct supervision.



Ron K. Barrett L.S. 24299
On behalf of Del-Mont Consultants Inc.

LEGEND

- FOUND MONUMENT
- CALCULATED CORNER
- ◆ WELL LOCATION
- ⊙ TARGET LOCATION
- BOTTOM HOLE LOCATION
- SHL - SURFACE HOLE LOCATION
- THL - TARGET HOLE LOCATION
- BHL - BOTTOM HOLE LOCATION

NOTES:

- 1) GPS OPERATOR A LEWIS OBSERVED A PDOP OF 1.2
- 2) ALL GPS OBSERVATIONS ARE IN COMPLIANCE WITH COGCC RULE 215.
- 3) ALL DISTANCES ARE GRID DISTANCE IN U.S. SURVEY FEET, NAD83, COLORADO CENTRAL ZONE.
- 4) THIS PLAT COMPLIES WITH COGCC RULE 303c.
- 5) NO VISIBLE IMPROVEMENTS WITHIN 400' OF WELL HEAD.
- 6) VEGETATION: SCRUB OAK, ASPEN, NATIVE SHRUBS & GRASSES.
- 7) TARGET HOLE AND BOTTOM HOLE NAD83 COORDINATES SHOWN ON THIS PLAN ARE CONVERTED FROM A DRILLING REPORT TRANSMITTED JUNE 8, 2011.

BASIS OF BEARING/DATUM

A GPS OBSERVATION FROM NGS PID AJ3463 (McCARY)

BASIS OF ELEVATION

A GPS OBSERVATION FROM NGS PID AJ3463 (McCARY). ELEVATION IS 5174.69'

DIMENSIONAL TIES

ALL DIMENSIONAL TIES TO SECTION LINES ARE MEASURED AT A 90° ANGLE TO THE SECTION LINE.

DEL-MONT CONSULTANTS IS PROVIDING GRADING DESIGN FOR THIS PROJECT THAT PROVIDES DIMENSIONS AND VOLUME INFORMATION FOR CONSTRUCTION.



DEL-MONT CONSULTANTS, INC.
ENGINEERING • SURVEYING • PLANNING
176 Colorado Ave. • Fort Collins, CO 80501 • (970) 248-2851 • (970) 248-2852 • www.delmont.com • ron@delmont.com



SECTION 8, T6S, R97W, 6TH PM
WELL LOCATION PLAT
CC 697-08-10B
WELL PAD 697-08A
GARFIELD COUNTY, COLORADO
OXY USA WTP LP

DESIGNED BY: **MGW/SNS** SCALE: **AS NOTED**
CHECKED BY: **R. BARRETT** FILE NAME: **10080V-087-08A-PLAT**

DATE REVISED: _____
CMC JOB NO: **10080**
DATE ISSUED: **2011-06-01**
DATE SURVEYED: **2008-08-19**
PLAT: **1 of 9**