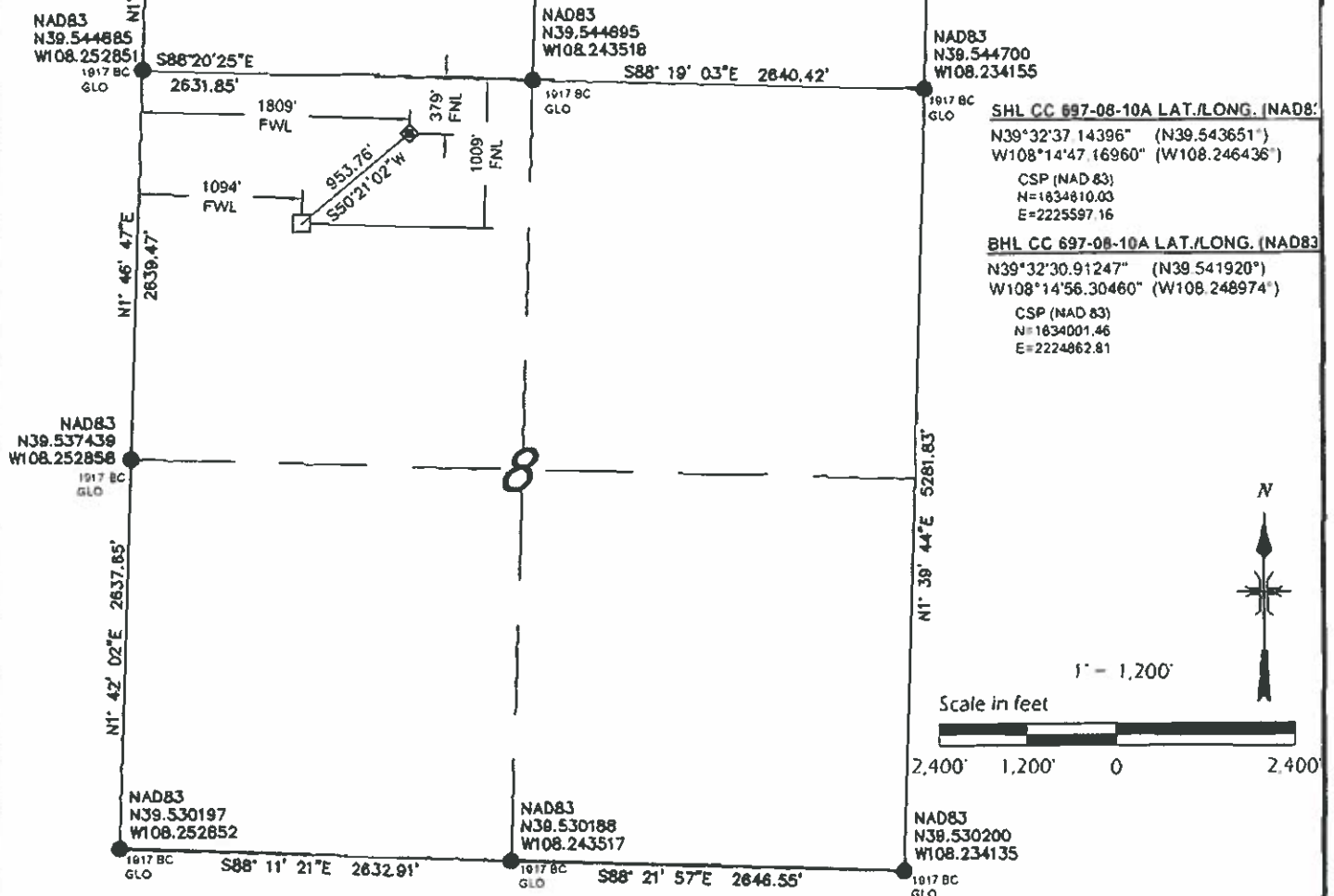


# CASCADE CREEK

CC 697-08-10A

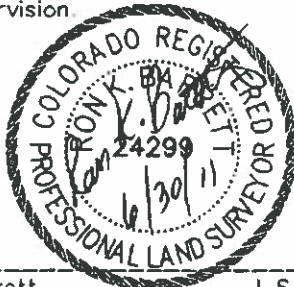
WELL PAD 697-08A

GRADED ELEVATION: 8400.40'



## SURVEYORS CERTIFICATE:

This is to certify that this exhibit was prepared and location as shown was staked on the ground from actual surveys made by me or under my direct supervision.



Ron K. Barrett L.S. 24299  
On behalf of Del-Mont Consultants Inc.

## LEGEND

- FOUND MONUMENT
- CALCULATED CORNER
- ◆ WELL LOCATION
- ⊙ TARGET LOCATION
- BOTTOM HOLE LOCATION
- SHL - SURFACE HOLE LOCATION
- THL - TARGET HOLE LOCATION
- BHL - BOTTOM HOLE LOCATION

## BASIS OF BEARING/DATUM

A GPS OBSERVATION FROM NGS PID AJ3463 (McCARY)

## BASIS OF ELEVATION

A GPS OBSERVATION FROM NGS PID AJ3463 (McCARY). ELEVATION IS 5174.69'

## DIMENSIONAL TIES

ALL DIMENSIONAL TIES TO SECTION LINES ARE MEASURED AT A 90° ANGLE TO THE SECTION LINE

## NOTES:

- 1) GPS OPERATOR A. LEWIS OBSERVED A PDOP OF 1.2
- 2) ALL GPS OBSERVATIONS ARE IN COMPLIANCE WITH COGCC RULE 215
- 3) ALL DISTANCES ARE GRID DISTANCE IN U.S. SURVEY FEET, NAD83, COLORADO CENTRAL ZONE
- 4) THIS PLAT COMPLIES WITH COGCC RULE 303c
- 5) NO VISIBLE IMPROVEMENTS WITHIN 400' OF WELL HEAD
- 6) VEGETATION: SCRUB OAK, ASPEN, NATIVE SHRUBS & GRASSES
- 7) TARGET HOLE AND BOTTOM HOLE NAD83 COORDINATES SHOWN ON THIS PLAN ARE CONVERTED FROM A DRILLING REPORT TRANSMITTED JUNE 8, 2011

DATE REVISED

DEL-MONT CONSULTANTS IS PROVIDING GRADING DESIGN FOR THIS PROJECT THAT PROVIDES DIMENSIONS AND VOLUME INFORMATION FOR CONSTRUCTION.



**DEL-MONT CONSULTANTS, INC.**  
ENGINEERING • SURVEYING • PLANNING  
126 Colorado Ave., V. Montrose, CO 81401 • (970) 240-2200 • (970) 240-2542 fax  
www.del-mont.com • info@del-mont.com



SECTION 8, T6S, R97W, 6TH PM  
WELL LOCATION PLAT  
CC 697-08-10A  
WELL PAD 697-08A  
GARFIELD COUNTY, COLORADO  
OXY USA WTP LP

DESIGNED BY: MGW/SNS  
SCALE: AS NOTED  
CHECKED BY: R. BARRETT  
FILE NAME: 10062V-007-08A-PLA1

DMC JOB NO. 10080  
DATE ISSUED 2011-06-01  
DATE SURVEYED 2008-08-19  
PLAT: 1 of 9