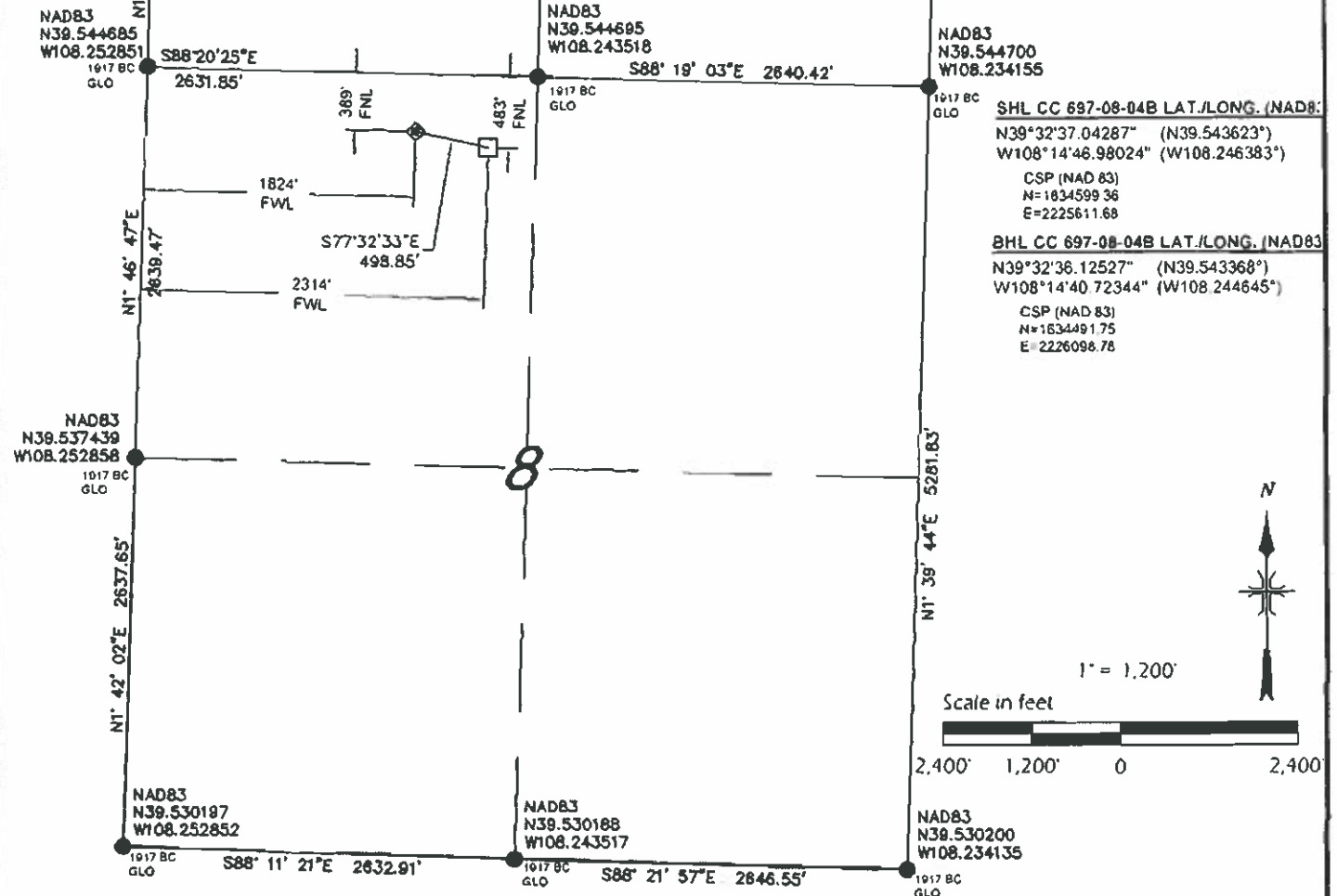


# CASCADE CREEK

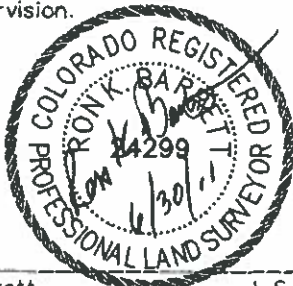
CC 697-08-04B

WELL PAD 697-08A  
GRADED ELEVATION: 8400.40'



## SURVEYORS CERTIFICATE:

This is to certify that this exhibit was prepared and location as shown was staked on the ground from actual surveys made by me or under my direct supervision.



Ron K. Barrett L.S. 24299  
On behalf of Del-Mont Consultants Inc.

DEL-MONT CONSULTANTS IS PROVIDING GRADING DESIGN FOR THIS PROJECT THAT PROVIDES DIMENSIONS AND VOLUME INFORMATION FOR CONSTRUCTION.

**DMC** DEL-MONT CONSULTANTS, INC.  
ENGINEERING • SURVEYING • PLANNING  
176 Colorado Ave. • Montrose, CO 81401 • (970) 248-2851 • (970) 248-2842 fax  
www.delmont.com • V. barrett@delmont.com

DESIGNED BY: MGW/SNS  
SCALE: AS NOTED  
CHECKED BY: R. BARRETT  
FILE NAME: 10080V-067-08A-PLAT



SECTION 8, T6S, R97W, 6TH PM  
WELL LOCATION PLAT  
CC 697-08-04B  
WELL PAD 697-08A  
GARFIELD COUNTY, COLORADO  
OXY USA WTP LP

DATE REVISED:  
DMC JOB NO: 10080  
DATE ISSUED: 2011-06-01  
DATE SURVEYED: 2008-08-19  
PLAT: 1 of 9