

CASCADE CREEK SURFACE WELL CC 697-05-73

WELL PAD 697-08A
GRADED ELEVATION: 8400.40'

NAD83
N39.544700
W108.234155

SHL CC 697-05-73 LAT./LONG. (NAD83)

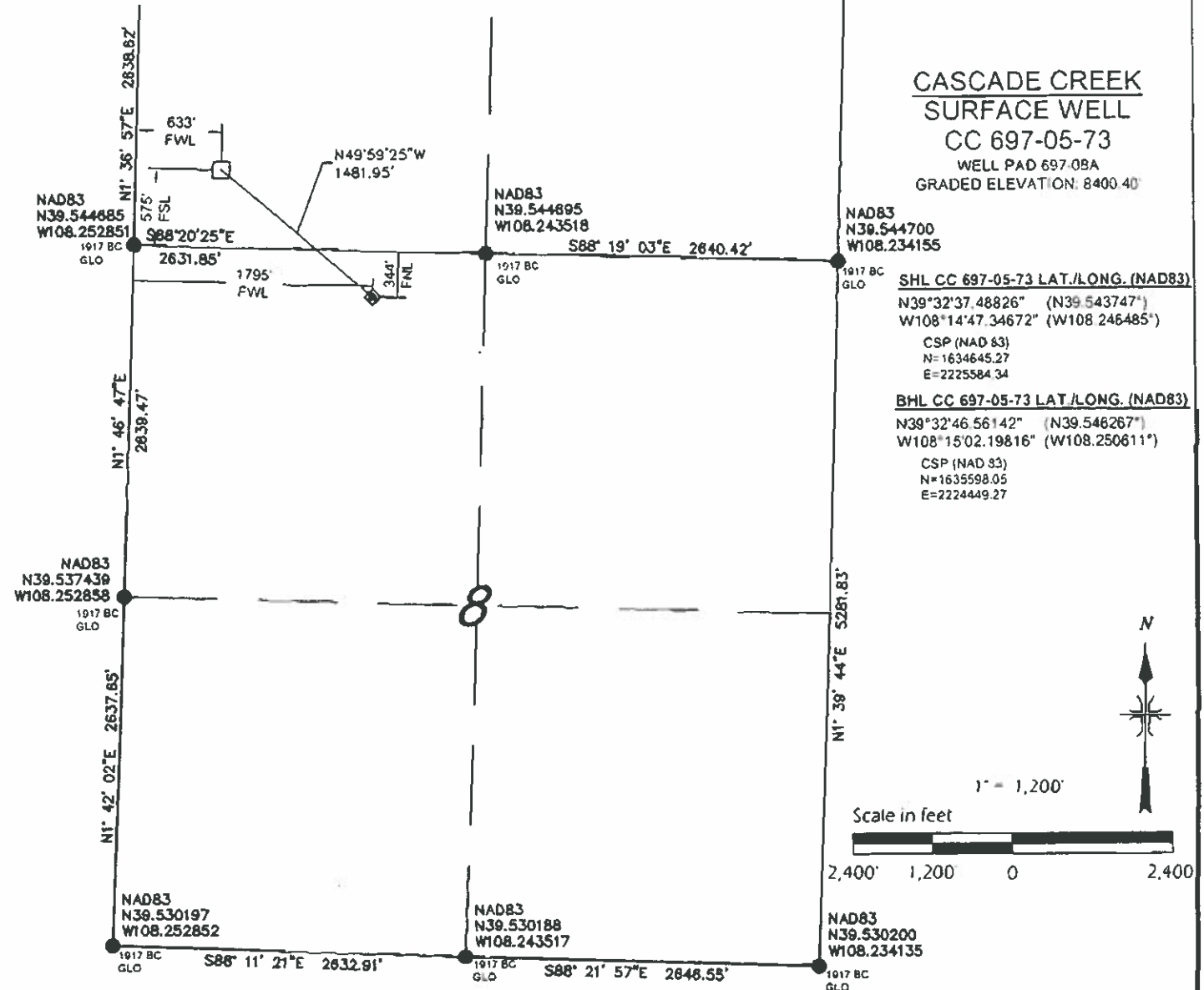
N39°32'37.48826" (N39.543747")
W108°14'47.34672" (W108.246485")

CSP (NAD 83)
N=1634645.27
E=2225584.34

BHL CC 697-05-73 LAT./LONG. (NAD83)

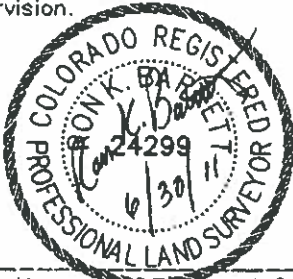
N39°32'46.56142" (N39.546267")
W108°15'02.19816" (W108.250611")

CSP (NAD 83)
N=1635598.05
E=2224449.27



SURVEYORS CERTIFICATE:

This is to certify that this exhibit was prepared and location as shown was staked on the ground from actual surveys made by me or under my direct supervision.



Ron K. Barrett L.S. 24299
On behalf of Del-Mont Consultants Inc.

LEGEND

- FOUND MONUMENT
- CALCULATED CORNER
- ◆ WELL LOCATION
- ⊙ TARGET LOCATION
- BOTTOM HOLE LOCATION
- SHL - SURFACE HOLE LOCATION
- THL - TARGET HOLE LOCATION
- BHL - BOTTOM HOLE LOCATION

NOTES:

- 1) GPS OPERATOR A LEWIS OBSERVED A PDOP OF 1.2
- 2) ALL GPS OBSERVATIONS ARE IN COMPLIANCE WITH COGCC RULE 215.
- 3) ALL DISTANCES ARE GRID DISTANCE IN U.S. SURVEY FEET, NAD83, COLORADO CENTRAL ZONE
- 4) THIS PLAT COMPLIES WITH COGCC RULE 303c
- 5) NO VISIBLE IMPROVEMENTS WITHIN 400' OF WELL HEAD
- 6) VEGETATION: SCRUB OAK, ASPEN, NATIVE SHRUBS & GRASSES
- 7) TARGET HOLE AND BOTTOM HOLE NAD83 COORDINATES SHOWN ON THIS PLAN ARE CONVERTED FROM A DRILLING REPORT TRANSMITTED JUNE 8, 2011

BASIS OF BEARING/DATUM

A GPS OBSERVATION FROM NGS PID AJ3463 (McCARY)

BASIS OF ELEVATION

A GPS OBSERVATION FROM NGS PID AJ3463 (McCARY) ELEVATION IS 5174.69'

DIMENSIONAL TIES

ALL DIMENSIONAL TIES TO SECTION LINES ARE MEASURED AT A 90° ANGLE TO THE SECTION LINE

DEL-MONT CONSULTANTS IS PROVIDING GRADING DESIGN FOR THIS PROJECT THAT PROVIDES DIMENSIONS AND VOLUME INFORMATION FOR CONSTRUCTION.



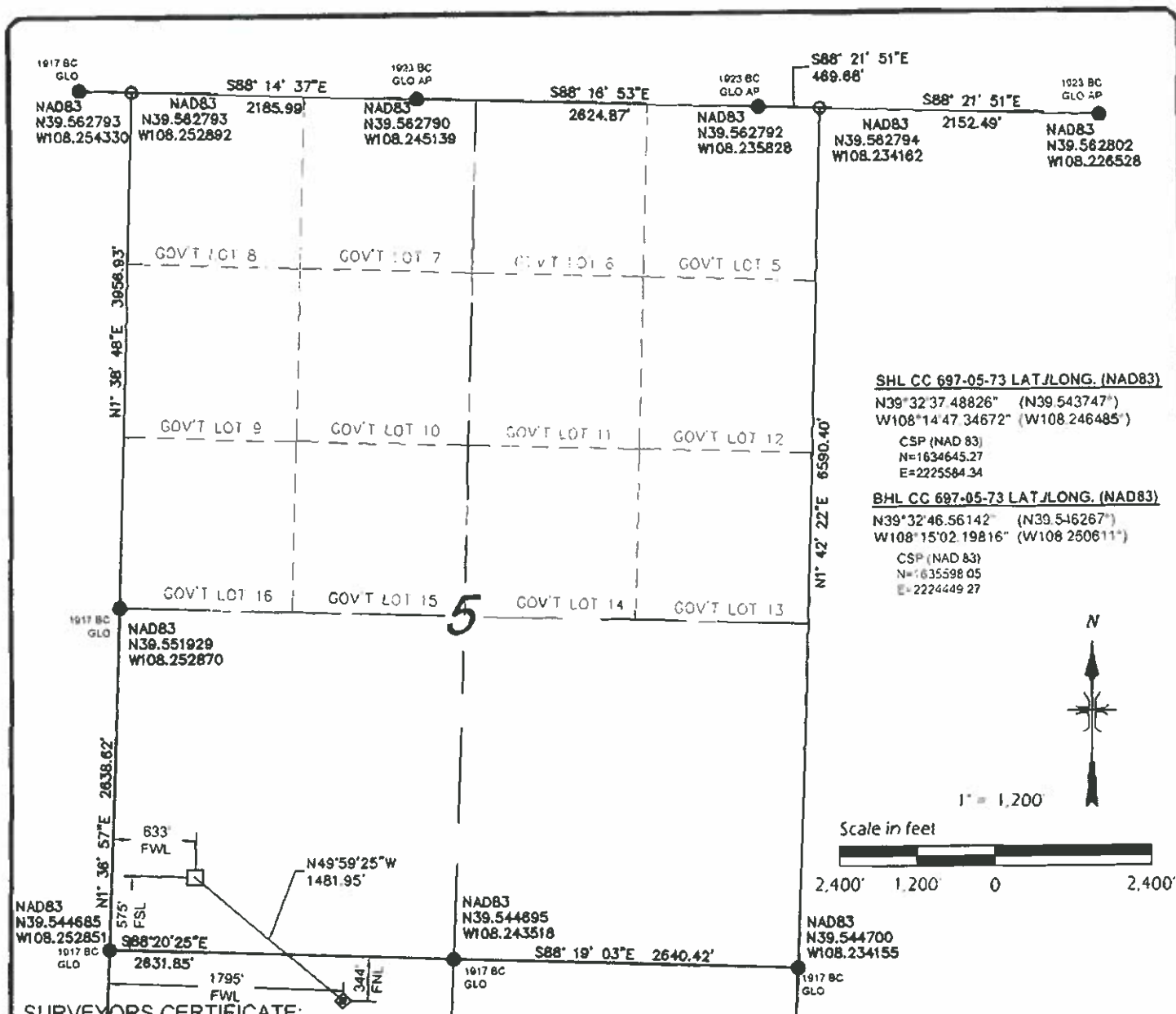
DEL-MONT CONSULTANTS, INC.
ENGINEERING • SURVEYING • PLANNING
136 Commerce Ave. • Fort Collins, CO 81401 • (970) 240-2291 • (970) 240-2542
www.del-mont.com • service@del-mont.com



**SECTIONS 5 & 8, T6S, R97W, 6TH PM
WELL LOCATION PLAT
SURFACE WELL CC 697-05-73
WELL PAD 697-08A
GARFIELD COUNTY, COLORADO
OXY USA WTP LP**

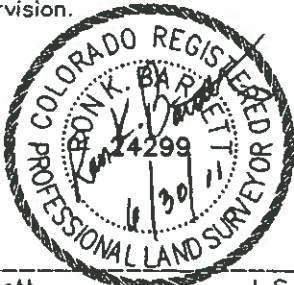
DAC JOB NO	10080
DATE ISSUED	2011-06-01
DATE SURVEYED	2008-08-19
PLAT	1 of 9

DESIGNED BY	MGW/SNS	SCALE	AS NOTED
CHECKED BY	R.BARRETT	FILE NAME	10080V-007-08A-PLAT



SURVEYORS CERTIFICATE:

This is to certify that this exhibit was prepared and location as shown was staked on the ground from actual surveys made by me or under my direct supervision.



Ron K. Barrett L.S. 24299
 On behalf of Del-Mont Consultants Inc.

LEGEND

- FOUND MONUMENT
- CALCULATED CORNER
- ◆ WELL LOCATION
- ⊙ TARGET LOCATION
- BOTTOM HOLE LOCATION
- SHL - SURFACE HOLE LOCATION
- THL - TARGET HOLE LOCATION
- BHL - BOTTOM HOLE LOCATION

NOTES:

- 1) GPS OPERATOR A. LEWIS OBSERVED A POOP OF 1.2.
- 2) ALL GPS OBSERVATIONS ARE IN COMPLIANCE WITH COGCC RULE 215.
- 3) ALL DISTANCES ARE GRID DISTANCE IN U.S. SURVEY FEET, NAD83, COLORADO CENTRAL ZONE.
- 4) THIS PLAT COMPLIES WITH COGCC RULE 303c.
- 5) NO VISIBLE IMPROVEMENTS WITHIN 400' OF WELL HEAD.
- 6) VEGETATION SCRUB OAK, ASPEN, NATIVE SHRUBS & GRASSES.
- 7) TARGET HOLE AND BOTTOM HOLE NAD83 COORDINATES SHOWN ON THIS PLAN ARE CONVERTED FROM A DRILLING REPORT TRANSMITTED JUNE 8, 2011.

BASIS OF BEARING/DATUM

A GPS OBSERVATION FROM NGS PID AJ3463 (McCARY)

BASIS OF ELEVATION

A GPS OBSERVATION FROM NGS PID AJ3463 (McCARY). ELEVATION IS 5174.69'

DIMENSIONAL TIES

ALL DIMENSIONAL TIES TO SECTION LINES ARE MEASURED AT A 90° ANGLE TO THE SECTION LINE

DEL-MONT CONSULTANTS IS PROVIDING GRADING DESIGN FOR THIS PROJECT THAT PROVIDES DIMENSIONS AND VOLUME INFORMATION FOR CONSTRUCTION.

DMC		DEL-MONT CONSULTANTS, INC. ENGINEERING • SURVEYING • PLANNING 138 Colorado Ave., V. Mountain, CO 81651 • (970) 248-2311 • (970) 248-2347 fax www.del-mont.com • rbarrett@del-mont.com	
DESIGNED BY	SCALE	CHECKED BY	FILE NAME
MGW/SNS	AS NOTED	R.BARRETT	100807-007-08A-PLAT



SECTIONS 5 & 8, T6S, R97W, 6TH PM
WELL LOCATION PLAT
BOTTOM HOLE CC 697-05-73
WELL PAD 697-08A
GARFIELD COUNTY, COLORADO
OXY USA WTP LP

DMC JOB NO	10080
DATE ISSUED	2011-06-01
DATE SURVEYED	2008-08-19
PLAT	1 of 9