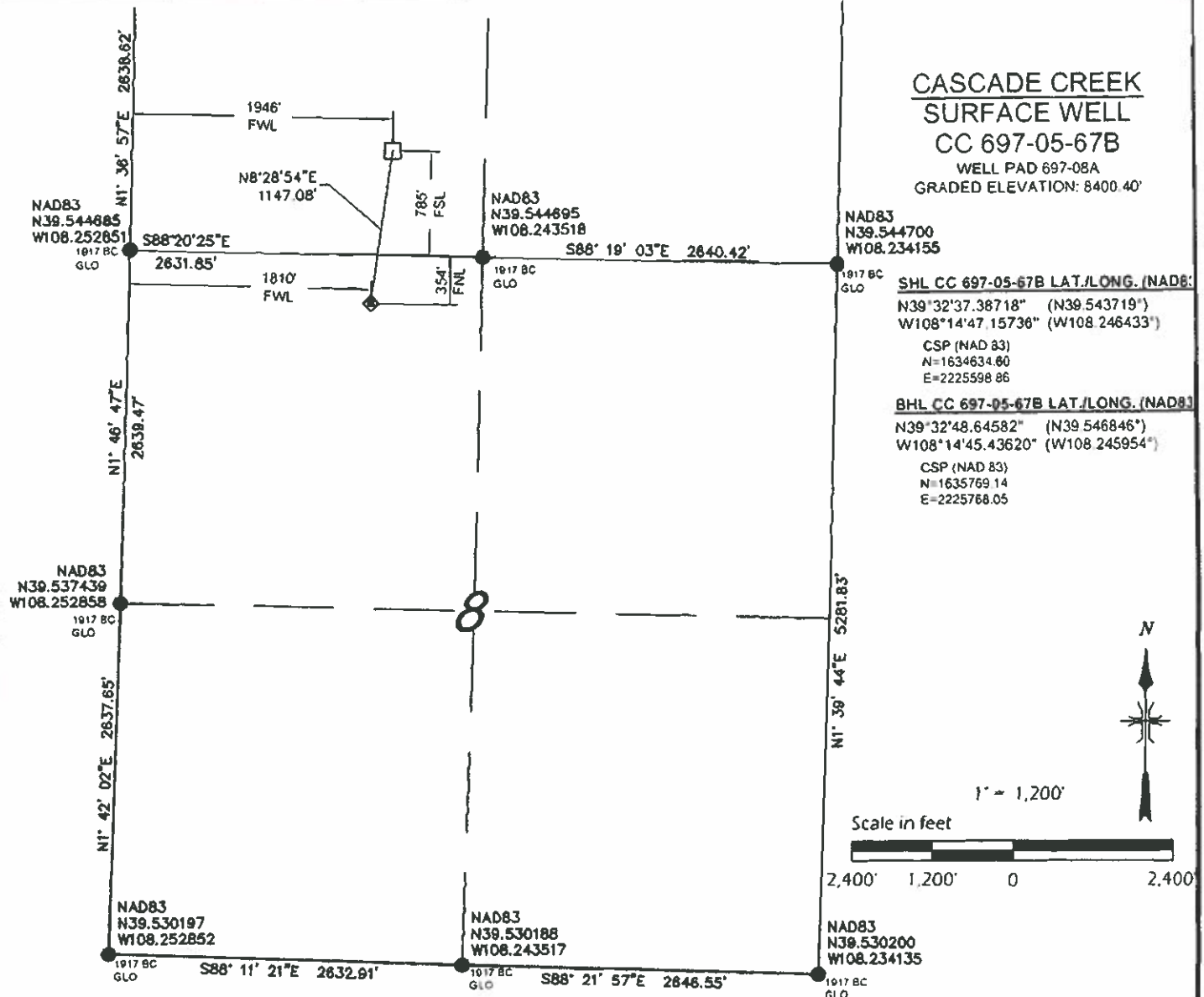
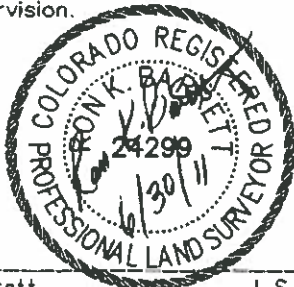


**CASCADE CREEK
SURFACE WELL
CC 697-05-67B**
WELL PAD 697-08A
GRADED ELEVATION: 8400.40'



SURVEYORS CERTIFICATE:

This is to certify that this exhibit was prepared and location as shown was staked on the ground from actual surveys made by me or under my direct supervision.



Ron K. Barrett L.S. 24299
On behalf of Del-Mont Consultants Inc.

LEGEND

- FOUND MONUMENT
- CALCULATED CORNER
- ◆ WELL LOCATION
- TARGET LOCATION
- BOTTOM HOLE LOCATION
- SHL - SURFACE HOLE LOCATION
- THL - TARGET HOLE LOCATION
- BHL - BOTTOM HOLE LOCATION

NOTES:

- 1) GPS OPERATOR A LEWIS OBSERVED A PDOP OF 1.2
- 2) ALL GPS OBSERVATIONS ARE IN COMPLIANCE WITH COGCC RULE 215.
- 3) ALL DISTANCES ARE GRID DISTANCE IN U.S. SURVEY FEET. NAD83, COLORADO CENTRAL ZONE.
- 4) THIS PLAT COMPLIES WITH COGCC RULE 303c
- 5) NO VISIBLE IMPROVEMENTS WITHIN 400' OF WELL HEAD.
- 6) VEGETATION: SCRUB OAK, ASPEN, NATIVE SHRUBS & GRASSES.
- 7) TARGET HOLE AND BOTTOM HOLE NAD83 COORDINATES SHOWN ON THIS PLAN ARE CONVERTED FROM A DRILLING REPORT TRANSMITTED JUNE 8, 2011.

BASIS OF BEARING/DATUM

A GPS OBSERVATION FROM NGS PID AJ3463 (McCARY)

BASIS OF ELEVATION

A GPS OBSERVATION FROM NGS PID AJ3463 (McCARY). ELEVATION IS 5174.69'

DIMENSIONAL TIES

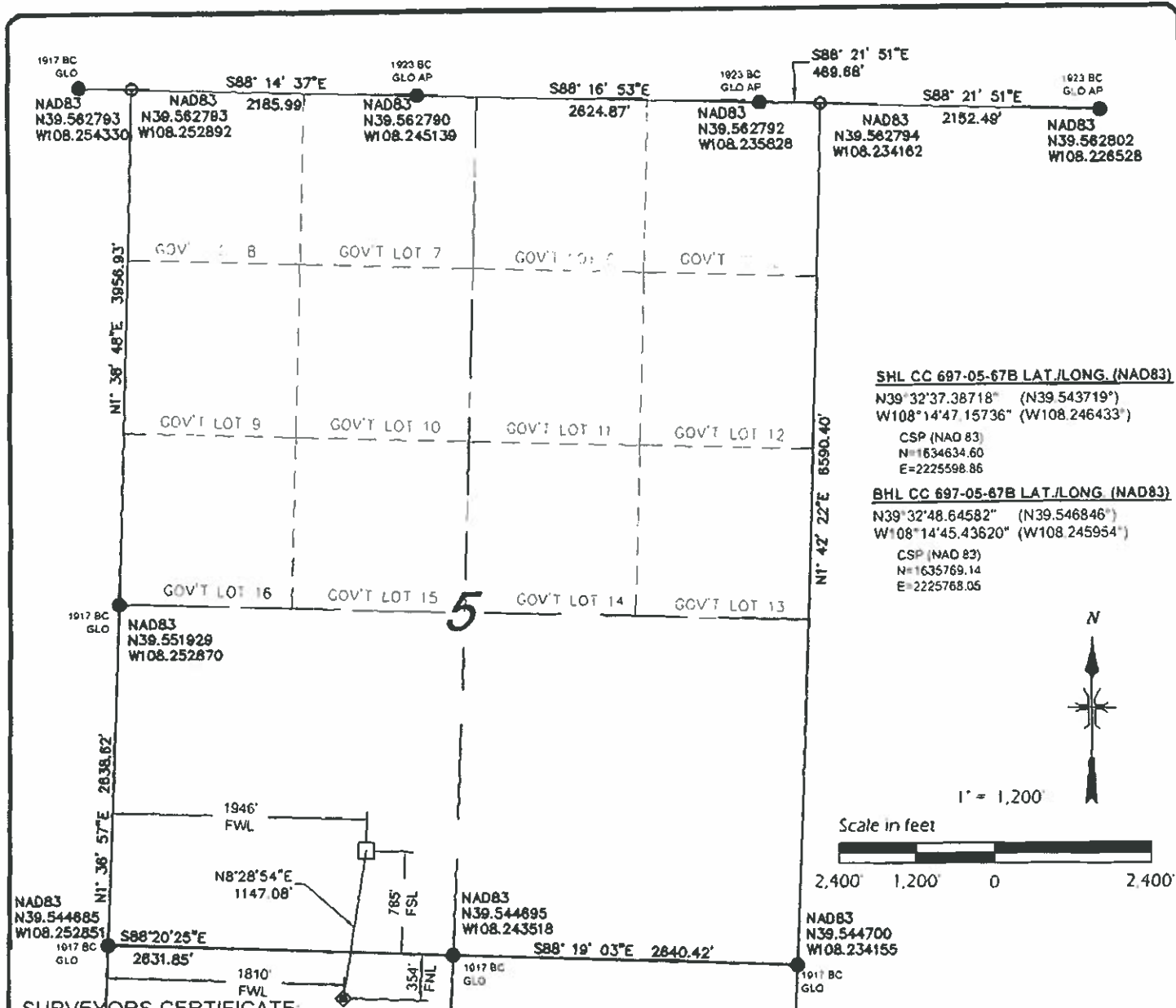
ALL DIMENSIONAL TIES TO SECTION LINES ARE MEASURED AT A 90° ANGLE TO THE SECTION LINE.

DEL-MONT CONSULTANTS IS PROVIDING GRADING DESIGN FOR THIS PROJECT THAT PROVIDES DIMENSIONS AND VOLUME INFORMATION FOR CONSTRUCTION.

DMC		DEL-MONT CONSULTANTS, INC. ENGINEERING • SURVEYING • PLANNING 138 Commerce Ave., P. O. Box 100, CO 81401 • (970) 346-2321 • (970) 248-2322 fax www.del-mont.com • info@del-mont.com	
DESIGNED BY:	SCALE:	AS NOTED	
MGW/SNS			
CHECKED BY:	FILE NAME:		
R.BARRETT	10080V-067-08A-PLAT		

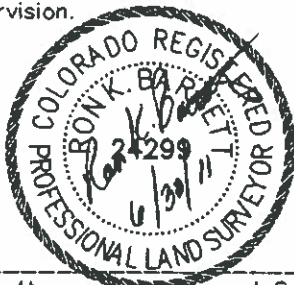
SECTIONS 5 & 8, T6S, R97W, 6TH PM	
WELL LOCATION PLAT	
SURFACE WELL CC 697-05-67B	
WELL PAD 697-08A	
GARFIELD COUNTY, COLORADO	
OXY USA WTP LP	

DWG NO.	10080
DATE ISSUED	2011-06-01
DATE SURVEYED	2008-08-19
PLAT:	1 of 9



SURVEYORS CERTIFICATE:

This is to certify that this exhibit was prepared and location as shown was staked on the ground from actual surveys made by me or under my direct supervision.



Ron K. Barrett L.S. 24299
 On behalf of Del-Mont Consultants Inc.

LEGEND

- FOUND MONUMENT
- CALCULATED CORNER
- ◆ WELL LOCATION
- ⊙ TARGET LOCATION
- BOTTOM HOLE LOCATION
- SHL - SURFACE HOLE LOCATION
- THL - TARGET HOLE LOCATION
- BHL - BOTTOM HOLE LOCATION

NOTES:

- 1) GPS OPERATOR A. LEWIS OBSERVED A POOP OF 1.2
- 2) ALL GPS OBSERVATIONS ARE IN COMPLIANCE WITH COGCC RULE 215.
- 3) ALL DISTANCES ARE GRID DISTANCE IN U.S. SURVEY FEET, NAD83, COLORADO CENTRAL ZONE.
- 4) THIS PLAT COMPLIES WITH COGCC RULE 303c.
- 5) NO VISIBLE IMPROVEMENTS WITHIN 400' OF WELL HEAD.
- 6) VEGETATION: SCRUB OAK, ASPEN, NATIVE SHRUBS & GRASSES.
- 7) TARGET HOLE AND BOTTOM HOLE NAD83 COORDINATES SHOWN ON THIS PLAN ARE CONVERTED FROM A DRILLING REPORT TRANSMITTED JUNE 8, 2011.

BASIS OF BEARING/DATUM

A GPS OBSERVATION FROM NGS PID AJ3463 (McCARY)

BASIS OF ELEVATION

A GPS OBSERVATION FROM NGS PID AJ3463 (McCARY). ELEVATION IS 5174.89'

DIMENSIONAL TIES

ALL DIMENSIONAL TIES TO SECTION LINES ARE MEASURED AT A 90° ANGLE TO THE SECTION LINE

DEL-MONT CONSULTANTS IS PROVIDING GRADING DESIGN FOR THIS PROJECT THAT PROVIDES DIMENSIONS AND VOLUME INFORMATION FOR CONSTRUCTION.

DMC DEL-MONT CONSULTANTS, INC.
 ENGINEERING • SURVEYING • PLANNING
 135 Colorado Ave., V. Mountain, CO 81401 • (970) 366-2551 • (970) 366-2552 • fax
 www.del-mont.com • survey@del-mont.com

DESIGNED BY: MGW/SNS
 SCALE: AS NOTED
 CHECKED BY: R. BARRETT
 FILE NAME: 10080V-007-08A PLAT



SECTIONS 5 & 8, T6S, R97W, 6TH PM
WELL LOCATION PLAT
BOTTOM HOLE CC 697-05-67B
WELL PAD 697-08A
GARFIELD COUNTY, COLORADO
OXY USA WTP LP

DATE REVISED:
 DATE JOB NO: 10080
 DATE ISSUED: 2011-06-01
 DATE SURVEYED: 2008-08-19
 PLAT: 1 of 9