

CASCADE CREEK SURFACE WELL CC 697-05-57B

WELL PAD 697-08A
GRADED ELEVATION: 8400.40'

NAD83
N39.544700
W108.234155

SHL CC 697-05-57B LAT./LONG. (NAD83)
N39°32'37.62604" (N39.543785")
W108°14'47.41764" (W108.246505")

CSP (NAD 83)
N=1634659.37
E=2225579.21

BHL CC 697-05-57B LAT./LONG. (NAD83)
N39°32'55.95371" (N39.548876")
W108°15'05.73372" (W108.251593")

CSP (NAD 83)
N=1636556.31
E=2224201.22

N1° 39' 44"E 5281.83'

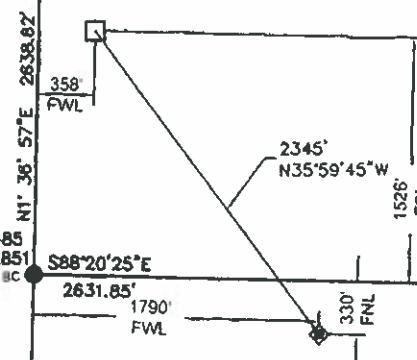
NAD83
N39.530200
W108.234135

NAD83
N39.544695
W108.243518

S88° 19' 03"E 2640.42'

NAD83
N39.530188
W108.243517

S88° 21' 57"E 2646.55'



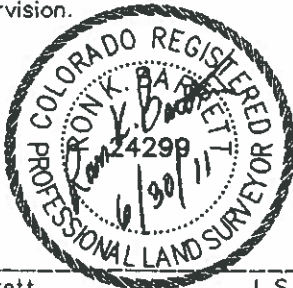
1" = 1,200'

Scale in feet

2,400' 1,200' 0 2,400'

SURVEYORS CERTIFICATE:

This is to certify that this exhibit was prepared and location as shown was staked on the ground from actual surveys made by me or under my direct supervision.



Ron K. Barrett L.S. 24299
On behalf of Del-Mont Consultants Inc.

LEGEND

- FOUND MONUMENT
- CALCULATED CORNER
- ◆ WELL LOCATION
- ⊙ TARGET LOCATION
- BOTTOM HOLE LOCATION
- SHL - SURFACE HOLE LOCATION
- THL - TARGET HOLE LOCATION
- BHL - BOTTOM HOLE LOCATION

NOTES:

- 1) GPS OPERATOR A LEWIS OBSERVED A PDOP OF 1.2.
- 2) ALL GPS OBSERVATIONS ARE IN COMPLIANCE WITH COGCC RULE 215.
- 3) ALL DISTANCES ARE GRID DISTANCE IN U.S. SURVEY FEET, NAD83, COLORADO CENTRAL ZONE.
- 4) THIS PLAT COMPLIES WITH COGCC RULE 303c.
- 5) NO VISIBLE IMPROVEMENTS WITHIN 400' OF WELL HEAD
- 6) VEGETATION: SCRUB OAK, ASPEN, NATIVE SHRUBS & GRASSES
- 7) TARGET HOLE AND BOTTOM HOLE NAD83 COORDINATES SHOWN ON THIS PLAN ARE CONVERTED FROM A DRILLING REPORT TRANSMITTED JUNE 8, 2011.

BASIS OF BEARING/DATUM

A GPS OBSERVATION FROM NGS PID AJ3463 (McCARY)

BASIS OF ELEVATION

A GPS OBSERVATION FROM NGS PID AJ3463 (McCARY). ELEVATION IS 5174.69'.

DIMENSIONAL TIES

ALL DIMENSIONAL TIES TO SECTION LINES ARE MEASURED AT A 90° ANGLE TO THE SECTION LINE.

DEL-MONT CONSULTANTS IS PROVIDING GRADING DESIGN FOR THIS PROJECT THAT PROVIDES DIMENSIONS AND VOLUME INFORMATION FOR CONSTRUCTION.

DMC DEL-MONT CONSULTANTS, INC.
ENGINEERING • SURVEYING • PLANNING
139 Commerce Ave. • Fort Collins, CO 80501 • (970) 226-2281 • (970) 226-2242 fax
www.del-mont.com • info@del-mont.com

DESIGNED BY: MGW/SNS SCALE: AS NOTED
CHECKED BY: R.BARRETT FILE NAME: 10080V-051-C&A-PLA1



SECTIONS 5 & 8, T6S, R97W, 6TH PM
WELL LOCATION PLAT
SURFACE WELL CC 697-05-57B
WELL PAD 697-08A
GARFIELD COUNTY, COLORADO
OXY USA WTP LP

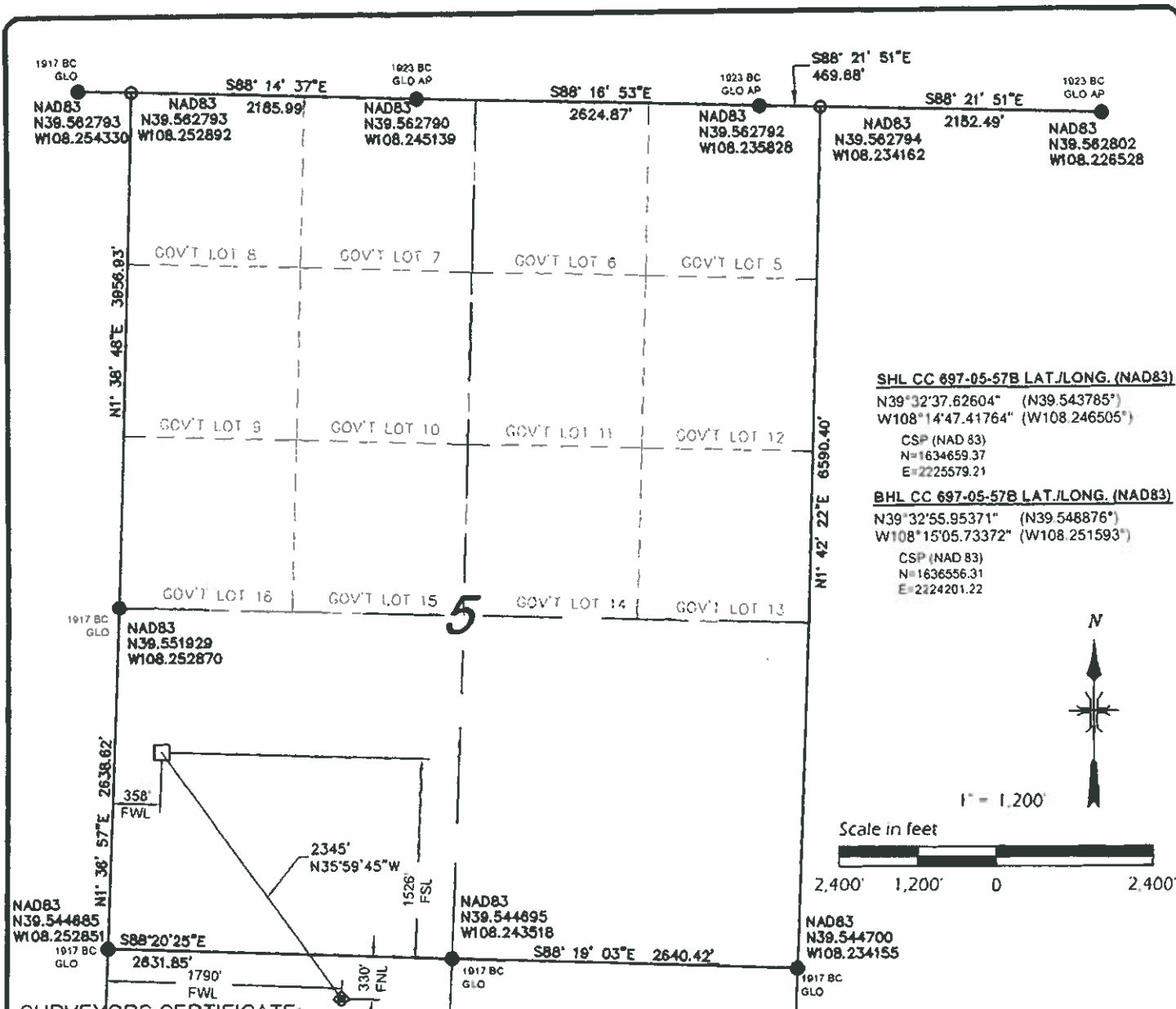
DATE REVISED

DVC JOB NO: 10080

DATE ISSUED: 2011-06-01

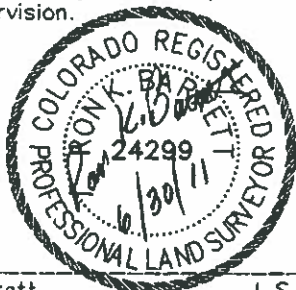
DATE SURVEYED: 2008-08-19

PLAT: 1 of 9



SURVEYORS CERTIFICATE:

This is to certify that this exhibit was prepared and location as shown was staked on the ground from actual surveys made by me or under my direct supervision.



Ron K. Barrett L.S. 24299
 On behalf of Del-Mont Consultants Inc.

LEGEND

- FOUND MONUMENT
- CALCULATED CORNER
- ◆ WELL LOCATION
- ⊙ TARGET LOCATION
- BOTTOM HOLE LOCATION
- SHL - SURFACE HOLE LOCATION
- THL - TARGET HOLE LOCATION
- BHL - BOTTOM HOLE LOCATION

NOTES:

- 1) GPS OPERATOR A. LEWIS OBSERVED A PDOP OF 1.2
- 2) ALL GPS OBSERVATIONS ARE IN COMPLIANCE WITH COGCC RULE 215.
- 3) ALL DISTANCES ARE GRID DISTANCE IN U.S. SURVEY FEET, NAD83, COLORADO CENTRAL ZONE.
- 4) THIS PLAT COMPLIES WITH COGCC RULE 303c.
- 5) NO VISIBLE IMPROVEMENTS WITHIN 400' OF WELL HEAD.
- 6) VEGETATION: SCRUB OAK, ASPEN, NATIVE SHRUBS & GRASSES.
- 7) TARGET HOLE AND BOTTOM HOLE NAD83 COORDINATES SHOWN ON THIS PLAN ARE CONVERTED FROM A DRILLING REPORT TRANSMITTED JUNE 8, 2011.

BASIS OF BEARING/DATUM

A GPS OBSERVATION FROM NGS PID AJ3463 (McCARY)

BASIS OF ELEVATION

A GPS OBSERVATION FROM NGS PID AJ3463 (McCARY). ELEVATION IS 5174.69'.

DIMENSIONAL TIES

ALL DIMENSIONAL TIES TO SECTION LINES ARE MEASURED AT A 90° ANGLE TO THE SECTION LINE

DEL-MONT CONSULTANTS IS PROVIDING GRADING DESIGN FOR THIS PROJECT THAT PROVIDES DIMENSIONS AND VOLUME INFORMATION FOR CONSTRUCTION.



DEL-MONT CONSULTANTS, INC.
 ENGINEERING • SURVEYING • PLANNING
 138 Colorado Ave., Suite 100, Denver, CO 80202 • (303) 540-3500 • www.delmont.com • info@delmont.com



SECTIONS 5 & 8, T6S, R97W, 6TH PM
WELL LOCATION PLAT
BOTTOM HOLE CC 697-05-57B
WELL PAD 697-08A
GARFIELD COUNTY, COLORADO
OXY USA WTP LP

DESIGNED BY	SCALE	AS NOTED
MGW/SNS		
CHECKED BY	FILE NAME	10080V-081-08A-PLAT
R. BARRETT		

DWG. JOB NO.	10080
DATE ISSUED	2011-06-01
DATE SURVEYED	2008-08-19
PLAT	1 of 9