

# CASCADE CREEK SURFACE WELL

CC 697-05-51

WELL PAD 697-08A  
GRADED ELEVATION: 8400.40'

NAD83  
N39.544700  
W108.234155

## SHL CC 697-05-51 LAT./LONG. (NAD83)

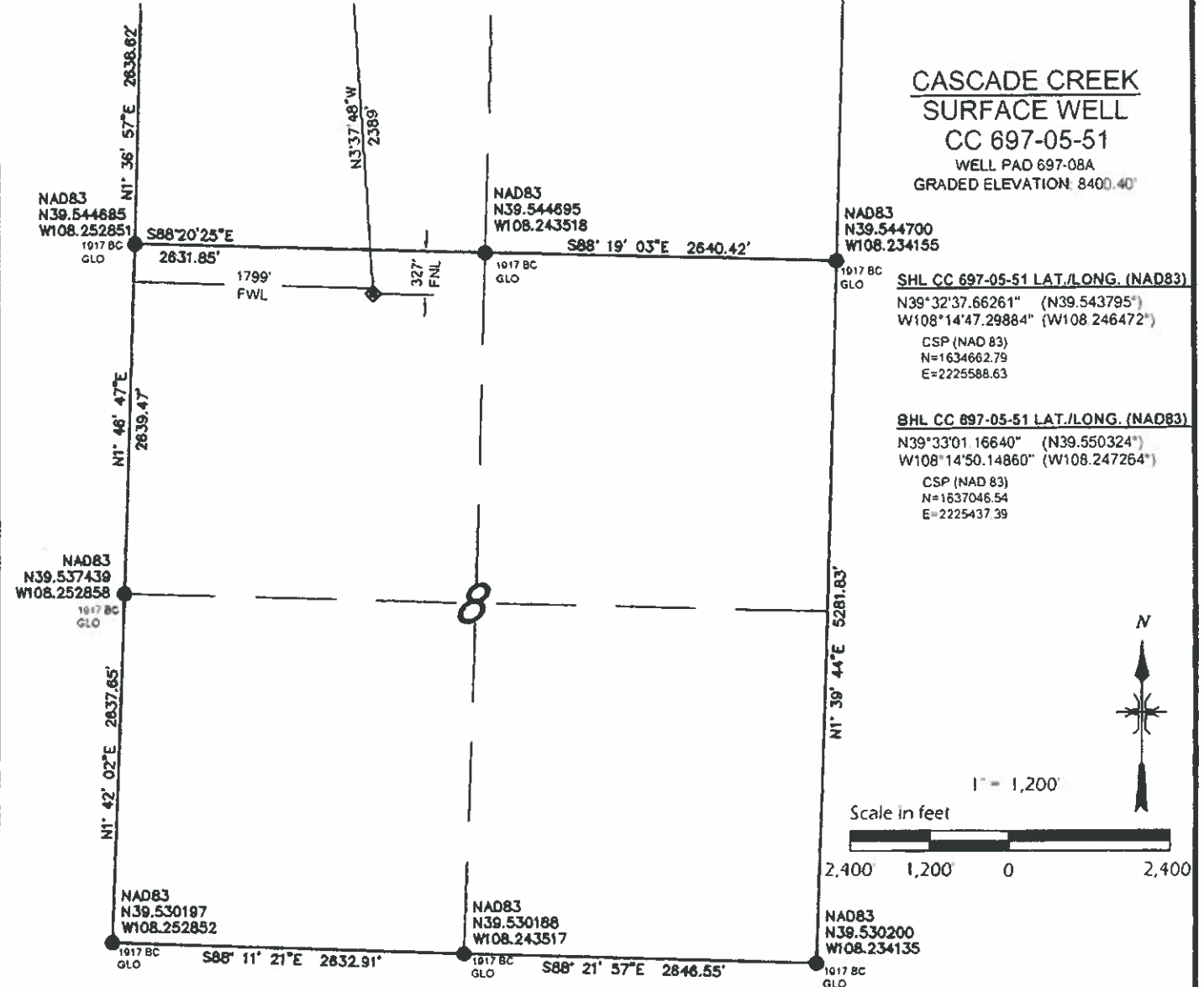
N39°32'37.66261" (N39.543795")  
W108°14'47.29884" (W108.246472")

CSP (NAD 83)  
N=1634662.79  
E=2225588.63

## BHL CC 697-05-51 LAT./LONG. (NAD83)

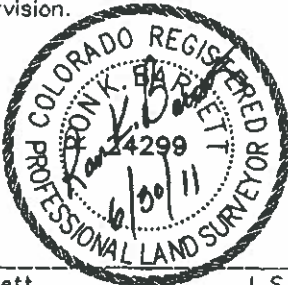
N39°33'01.16640" (N39.550324")  
W108°14'50.14860" (W108.247264")

CSP (NAD 83)  
N=1637046.54  
E=2225437.39



## SURVEYORS CERTIFICATE:

This is to certify that this exhibit was prepared and location as shown was staked on the ground from actual surveys made by me or under my direct supervision.



Ron K. Barrett L.S. 24299  
On behalf of Del-Mont Consultants Inc.

## LEGEND

- FOUND MONUMENT
- CALCULATED CORNER
- ⊕ WELL LOCATION
- ⊙ TARGET LOCATION
- BOTTOM HOLE LOCATION
- SHL - SURFACE HOLE LOCATION
- THL - TARGET HOLE LOCATION
- BHL - BOTTOM HOLE LOCATION

## NOTES:

- 1) GPS OPERATOR A LEWIS OBSERVED A PPOF OF 1.2.
- 2) ALL GPS OBSERVATIONS ARE IN COMPLIANCE WITH COGCC RULE 215.
- 3) ALL DISTANCES ARE GRID DISTANCE IN U.S. SURVEY FEET, NAD83, COLORADO CENTRAL ZONE.
- 4) THIS PLAT COMPLIES WITH COGCC RULE 303c.
- 5) NO VISIBLE IMPROVEMENTS WITHIN 400' OF WELL HEAD.
- 6) VEGETATION: SCRUB OAK, ASPEN, NATIVE SHRUBS & GRASSES.
- 7) TARGET HOLE AND BOTTOM HOLE NAD83 COORDINATES SHOWN ON THIS PLAN ARE CONVERTED FROM A DRILLING REPORT TRANSMITTED JUNE 8, 2011.

## BASIS OF BEARING/DATUM

A GPS OBSERVATION FROM NGS PID AJ3463 (McCARY)

## BASIS OF ELEVATION

A GPS OBSERVATION FROM NGS PID AJ3463 (McCARY). ELEVATION IS 5174.69'

## DIMENSIONAL TIES

ALL DIMENSIONAL TIES TO SECTION LINES ARE MEASURED AT A 90° ANGLE TO THE SECTION LINE

DEL-MONT CONSULTANTS IS PROVIDING GRADING DESIGN FOR THIS PROJECT THAT PROVIDES DIMENSIONS AND VOLUME INFORMATION FOR CONSTRUCTION.



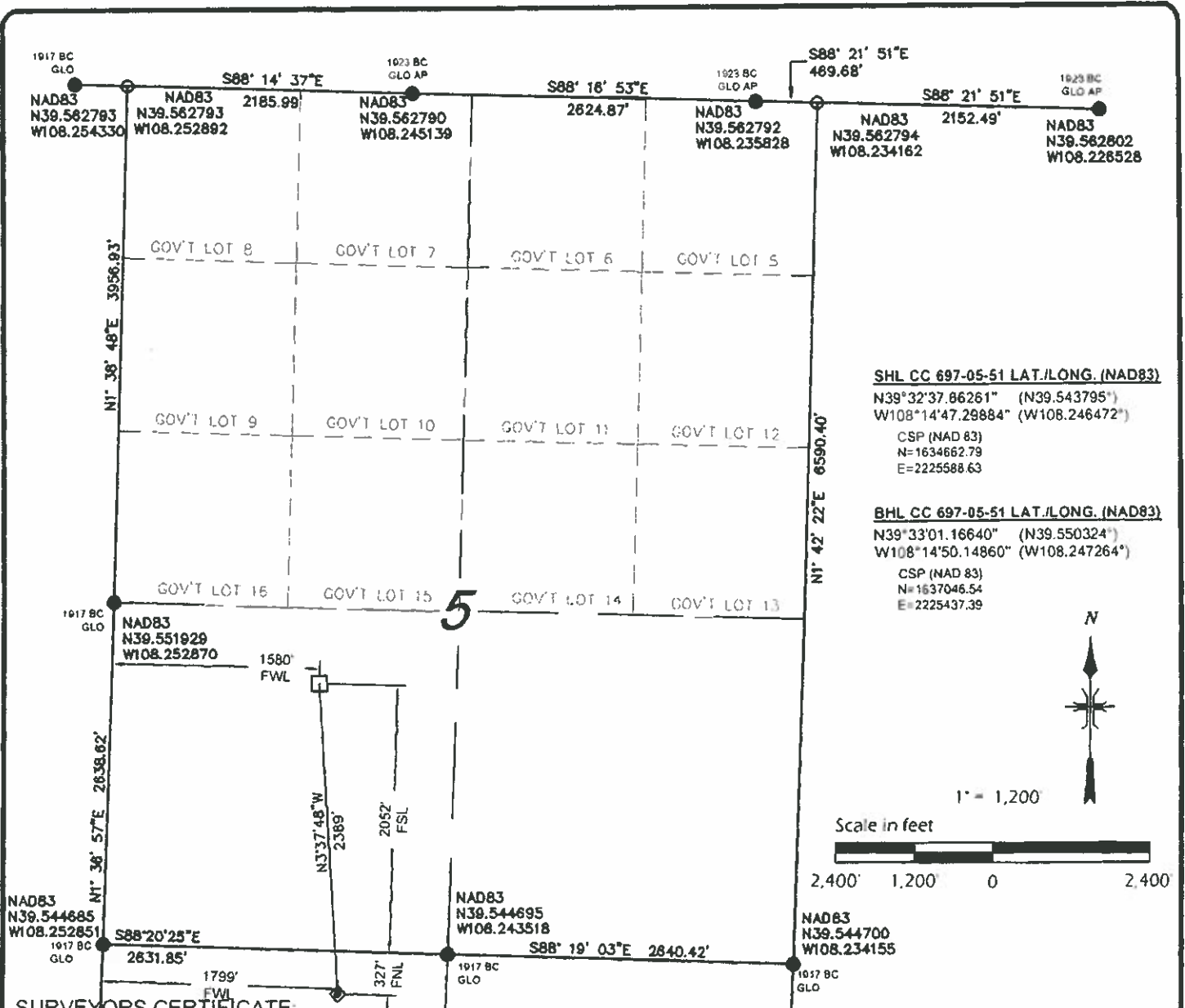
DEL-MONT CONSULTANTS, INC.  
ENGINEERING • SURVEYING • PLANNING  
130 Colorado Ave. • Fort Collins, CO 81401 • (970) 348-2081 • (970) 348-2542  
www.delmont.com • info@delmont.com



SECTIONS 5 & 8, T6S, R97W, 6TH PM  
WELL LOCATION PLAT  
SURFACE WELL CC 697-05-51  
WELL PAD 697-08A  
GARFIELD COUNTY, COLORADO  
OXY USA WTP LP

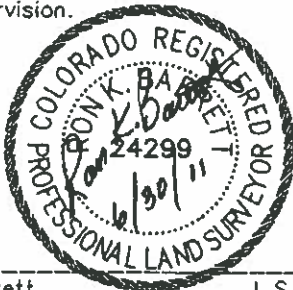
DESIGNED BY	SCALE
MGW/SNS	AS NOTED
CHECKED BY	FILE NAME
R.BARRETT	10060V-067-08A-PLAT

DATE REVISED	
DMC JOB NO	10080
DATE ISSUED	2011-06-01
DATE SURVEYED	2008-08-19
PLAT	1 of 9



### SURVEYORS CERTIFICATE:

This is to certify that this exhibit was prepared and location as shown was staked on the ground from actual surveys made by me or under my direct supervision.



Ron K. Barrett L.S. 24299  
 On behalf of Del-Mont Consultants Inc.

### LEGEND

- FOUND MONUMENT
- CALCULATED CORNER
- ◆ WELL LOCATION
- ⊙ TARGET LOCATION
- BOTTOM HOLE LOCATION
- SHL - SURFACE HOLE LOCATION
- THL - TARGET HOLE LOCATION
- BHL - BOTTOM HOLE LOCATION

### NOTES:

- 1) GPS OPERATOR A. LEWIS OBSERVED A POOP OF 1.2
- 2) ALL GPS OBSERVATIONS ARE IN COMPLIANCE WITH COGCC RULE 215.
- 3) ALL DISTANCES ARE GRID DISTANCE IN U.S. SURVEY FEET, NAD83, COLORADO CENTRAL ZONE.
- 4) THIS PLAT COMPLIES WITH COGCC RULE 303c.
- 5) NO VISIBLE IMPROVEMENTS WITHIN 400' OF WELL HEAD.
- 6) VEGETATION: SCRUB OAK, ASPEN, NATIVE SHRUBS & GRASSES.
- 7) TARGET HOLE AND BOTTOM HOLE NAD83 COORDINATES SHOWN ON THIS PLAN ARE CONVERTED FROM A DRILLING REPORT TRANSMITTED JUNE 8, 2011.

### BASIS OF BEARING/DATUM

A GPS OBSERVATION FROM NGS PID AJ3463 (McCARY)

### BASIS OF ELEVATION

A GPS OBSERVATION FROM NGS PID AJ3463 (McCARY). ELEVATION IS 5174.69'

### DIMENSIONAL TIES

ALL DIMENSIONAL TIES TO SECTION LINES ARE MEASURED AT A 90° ANGLE TO THE SECTION LINE

DEL-MONT CONSULTANTS IS PROVIDING GRADING DESIGN FOR THIS PROJECT THAT PROVIDES DIMENSIONS AND VOLUME INFORMATION FOR CONSTRUCTION.



**DEL-MONT CONSULTANTS, INC.**  
 ENGINEERING • SURVEYING • PLANNING  
 138 Colorado Ave., V. Montague, CO 81051 • (970) 348-2221 • (970) 348-2543 fax  
 www.del-mont.com • v.serviced@del-mont.com



**SECTIONS 5 & 8, T6S, R97W. 6TH PM**  
**WELL LOCATION PLAT**  
**BOTTOM HOLE CC 697-05-51**  
**WELL PAD 697-08A**  
**GARFIELD COUNTY, COLORADO**  
**OXY USA WTP LP**

DESIGNED BY	SCALE
MGW/SNS	AS NOTED
CHECKED BY	FILE NAME
R.BARRETT	10080V-007-08A-PLAT

DATE REVISED	
DWG. JOB NO.	10080
DATE ISSUED	2011-06-01
DATE SURVEYED	2008-08-19
PLAT	1 of 9