

---

# **XTO ENERGY INC EBUSINESS**

---

**Apache Canyon 01-04**

**Las Animas County , Colorado**

## **Squeeze Hole in Casing**

**20-Jun-2011**

### **Job Site Documents**

## The Road to Excellence Starts with Safety

Sold To #: 353810	Ship To #: 2857663	Quote #:	Sales Order #: 8263350
Customer: XTO ENERGY INC EBUSINESS	Customer Rep:		
Well Name: Apache Canyon	Well #: 01-04	API/UWI #:	
Field:	City (SAP): TRINIDAD	County/Parish: Las Animas	State: Colorado
Contractor: ENSIGN	Rig/Platform Name/Num:		
Job Purpose: Squeeze Hole in Casing			
Well Type: Development Well	Job Type: Squeeze Hole in Casing		
Sales Person: THEIS, MATTHEW	Srvc Supervisor: KELEHER, JASON	MBU ID Emp #:	437348

## Job Personnel

HES Emp Name	Exp Hrs	Emp #	HES Emp Name	Exp Hrs	Emp #	HES Emp Name	Exp Hrs	Emp #
DIRKS, RICHARD E	2.5	485940	FANTASIA, JOSEPH Brandon	2.5	485445	KELEHER, JASON E	2.5	437348

## Equipment

HES Unit #	Distance-1 way	HES Unit #	Distance-1 way	HES Unit #	Distance-1 way	HES Unit #	Distance-1 way
11341988C	261 mile	11518548	261 mile	11645065	261 mile	5707C	261 mile

## Job Hours

Date	On Location Hours	Operating Hours	Date	On Location Hours	Operating Hours	Date	On Location Hours	Operating Hours
6-20-11	2.5	1						

TOTAL

Total is the sum of each column separately

## Job

## Job Times

Formation Name	Formation Depth (MD)	Top	Bottom	Form Type	Job depth MD	Job Depth TVD	Water Depth	Perforation Depth (MD)	From	To	Called Out	Date	Time	Time Zone
				BHST	1199. ft	1199. ft						20 - Jun - 2011	06:00	MST
											On Location	20 - Jun - 2011	07:00	MST
											Job Started	20 - Jun - 2011	09:02	MST
											Job Completed	20 - Jun - 2011	09:51	MST
											Departed Loc	20 - Jun - 2011	10:30	MST

## Well Data

Description	New / Used	Max pressure psig	Size in	ID in	Weight lbm/ft	Thread	Grade	Top MD ft	Bottom MD ft	Top TVD ft	Bottom TVD ft
11" Openhole				11.				814.	1254.		
8 5/8" Surface Casing	Unknown		8.625	8.097	24.				814.		

## Tools and Accessories

Type	Size	Qty	Make	Depth	Type	Size	Qty	Make	Depth	Type	Size	Qty	Make
Guide Shoe					Packer					Top Plug			
Float Shoe					Bridge Plug					Bottom Plug			
Float Collar					Retainer					SSR plug set			
Insert Float										Plug Container			
Stage Tool										Centralizers			

## Miscellaneous Materials

Gelling Agt	Conc	Surfactant	Conc	Acid Type	Qty	Conc	%
Treatment Fld	Conc	Inhibitor	Conc	Sand Type	Size	Qty	

## Fluid Data

Stage/Plug #: 1	Fluid #	Stage Type	Fluid Name	Qty	Qty uom	Mixing Density lbm/gal	Yield ft3/sk	Mix Fluid Gal/sk	Rate bbl/min	Total Mix Fluid Gal/sk
-----------------	---------	------------	------------	-----	---------	------------------------	--------------	------------------	--------------	------------------------

Stage/Plug #: 1	Fluid #	Stage Type	Fluid Name	Qty	Qty uom	Mixing Density lbm/gal	Yield ft3/sk	Mix Fluid Gal/sk	Rate bbl/min	Total Mix Fluid Gal/sk
-----------------	---------	------------	------------	-----	---------	------------------------	--------------	------------------	--------------	------------------------



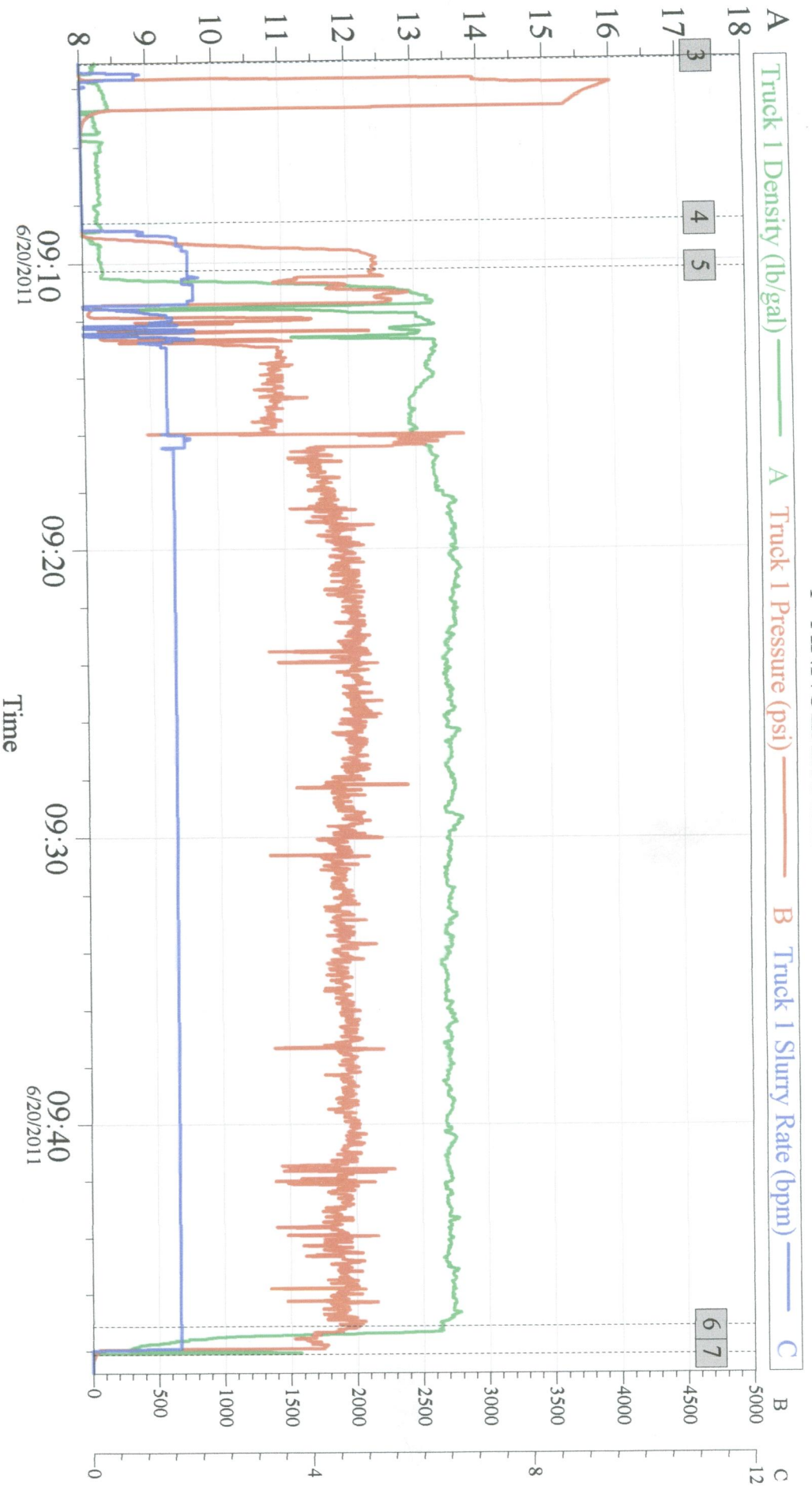
Stage/Plug #: 1									
1	FRESH WATER		2.00	bbl	8.33	.0	.0	.0	
2	Trinidad Surface Blend	TRINIDAD SURFACE BLEND - SBM (137081)	150.0	sacks	13.5	1.81	8.9	4.0	7.76
	0.125 lbm	POLY-E-FLAKE (101216940)							
	2 %	CAL-SEAL 60, 50 LB BAG (101217146)							
	2 %	ECONOLITE (100001580)							
	5 lbm	GILSONITE, 50 LB BAG (100001618)							
	0.2 %	VERSASET, 55 LB SK (101376573)							
	6 %	SALT, 100 LB BAG (100003652)							
	7.76 Gal	FRESH WATER							
3	DISPLACEMENT		1.00	bbl	8.33	.0	.0	.0	
Calculated Values		Pressures		Volumes					
Displacement		Shut In: Instant		Lost Returns		Cement Slurry		Pad	
Top Of Cement		5 Min		Cement Returns		Actual Displacement		Treatment	
Frac Gradient		15 Min		Spacers		Load and Breakdown		Total Job	
Rates									
Circulating		Mixing		Displacement		Avg. Job			
Cement Left In Pipe	Amount	0 ft	Reason	Shoe Joint					
Frac Ring # 1 @	ID	Frac ring # 2 @	ID	Frac Ring # 3 @	ID	Frac Ring # 4 @	ID		
The Information Stated Herein Is Correct				Customer Representative Signature					

*The Road to Excellence Starts with Safety*

Sold To #: 353810	Ship To #: 2857663	Quote #:	Sales Order #: 8263350
Customer: XTO ENERGY INC EBUSINESS		Customer Rep:	
Well Name: Apache Canyon	Well #: 01-04	API/UWI #:	
Field:	City (SAP): TRINIDAD	County/Parish: Las Animas	State: Colorado
Legal Description:			
Lat:		Long:	
Contractor: ENSIGN		Rig/Platform Name/Num: .	
Job Purpose: Squeeze Hole in Casing			Ticket Amount:
Well Type: Development Well		Job Type: Squeeze Hole in Casing	
Sales Person: THEIS, MATTHEW		Srvc Supervisor: KELEHER, JASON	MBU ID Emp #: 437348

Activity Description	Date/Time	Cht #	Rate bbl/ min	Volume bbl		Pressure psig		Comments
				Stage	Total	Tubing	Casing	
Arrive at Location from Service Center	06/20/2011 08:00							
Assessment Of Location Safety Meeting	06/20/2011 08:10							
Test Lines	06/20/2011 09:02							PRESSURE TEST TO 40000
Pump Spacer 1	06/20/2011 09:08		1.5	2			2222.0	RIG WATER
Pump Cement	06/20/2011 09:10		1.5	48			1959.0	150 SKS SURFACE BLEND MIXED AT 13.5 PPG WITH RIG WATER
Pump Displacement	06/20/2011 09:47		1.5	1			1803.0	RIG WATER
Shutdown	06/20/2011 09:48							NO RETURN THROUGHOUT JOB
End Job	06/20/2011 09:50							

# XTO - APACHE CANYON 01-04 1" ANNULAR FILL



## Global Event Log

1	Starting Job	08:40:02	2	Start Job	09:02:58	3	Test Lines	09:03:10
4	Pump Spacer 1	09:08:37	5	Pump Cement	09:10:15	6	Pump Displacement	09:47:09
7	Shutdown	09:48:07	8	End Job	09:51:47	9	Ending Job	09:51:53

Customer: XTO  
Well Description: ANNULAR FILL

Job Date: 20-Jun-2011  
UWI:

Sales Order #: 8263350