

Company  
Well Apache Canyon 1-04  
Field Purgatoire River  
County Las animas  
State Co.

Company XTO Energy  
Well Apache Canyon 1-04  
Field Purgatoire River  
County Las animas State Co.

Location: API #: 05 071 09865

SEC 1 TWP 34S RGE 68W

Permanent Datum Ground level Elevation 8519'  
Log Measured From Ground level  
Drilling Measured From Ground level

Other Services  
Elevation  
K.B. -----  
D.F. -----  
G.L. 8519'

Date				b-24-11			
Run Number				One			
Depth Driller				2555'			
Depth Logger				2492'			
Bottom Logged Interval				2490'			
Top Log Interval				Surface			
Open Hole Size				7 7/8"			
Type Fluid				Water			
Density / Viscosity				///			
Max. Recorded Temp.				///			
Estimated Cement Top				Surface			
Time Well Ready				ROA			
Time Logger on Bottom				12:00 p.m.			
Equipment Number				T045			
Location				Trinidad, Co.			
Recorded By				L. Smith			
Witnessed By				Mr. Brandon Bernal			
Borehole Record				Tubing Record			
Run Number	Bit	From	To	Size	Weight	From	To
Casing Record		Size		Wgt/Ft		Top	Bottom
Surface String		8 5/8"				00	814'
Prot. String							
Production String		5.5"				00	2555'
Liner							

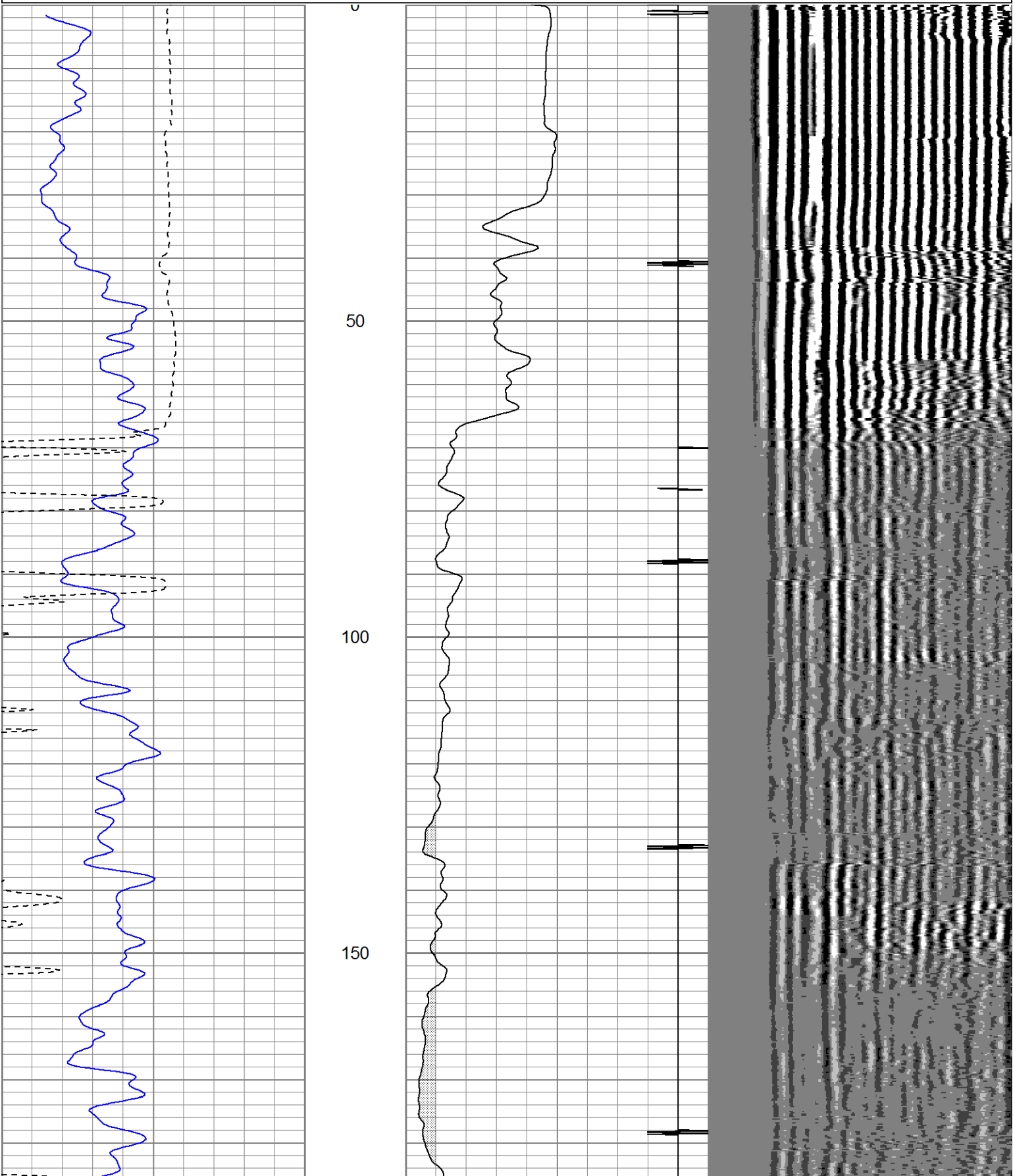
<<< Fold Here >>>

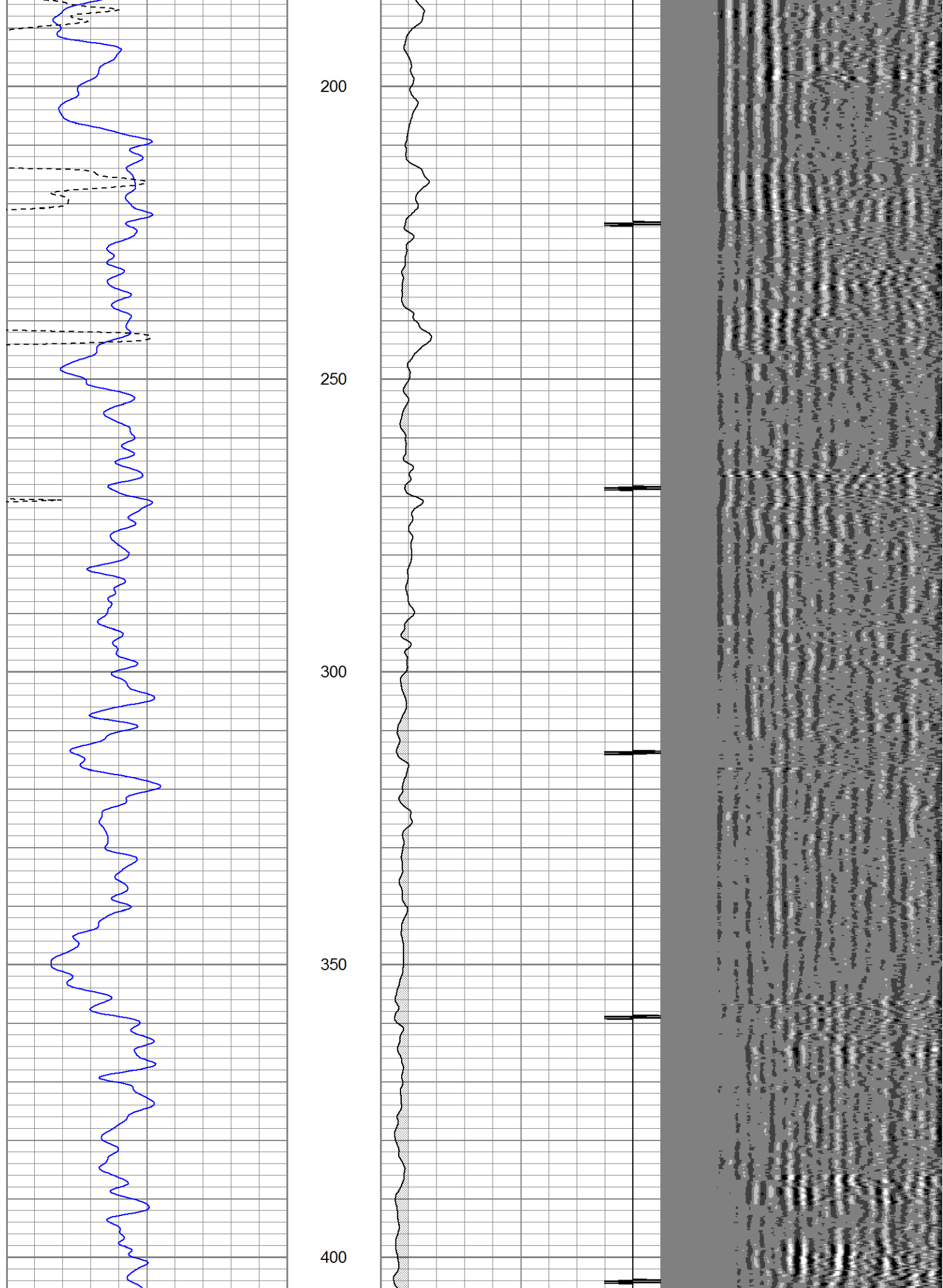
All interpretations are opinions based on inferences from electrical or other measurements and we cannot and do not guarantee the accuracy or correctness of any interpretation, and we shall not, except in the case of gross or willful negligence on our part, be liable or responsible for any loss, costs, damages, or expenses incurred or sustained by anyone resulting from any interpretation made by any of our officers, agents or employees. These interpretations are also subject to our general terms and conditions set out in our current Price Schedule.

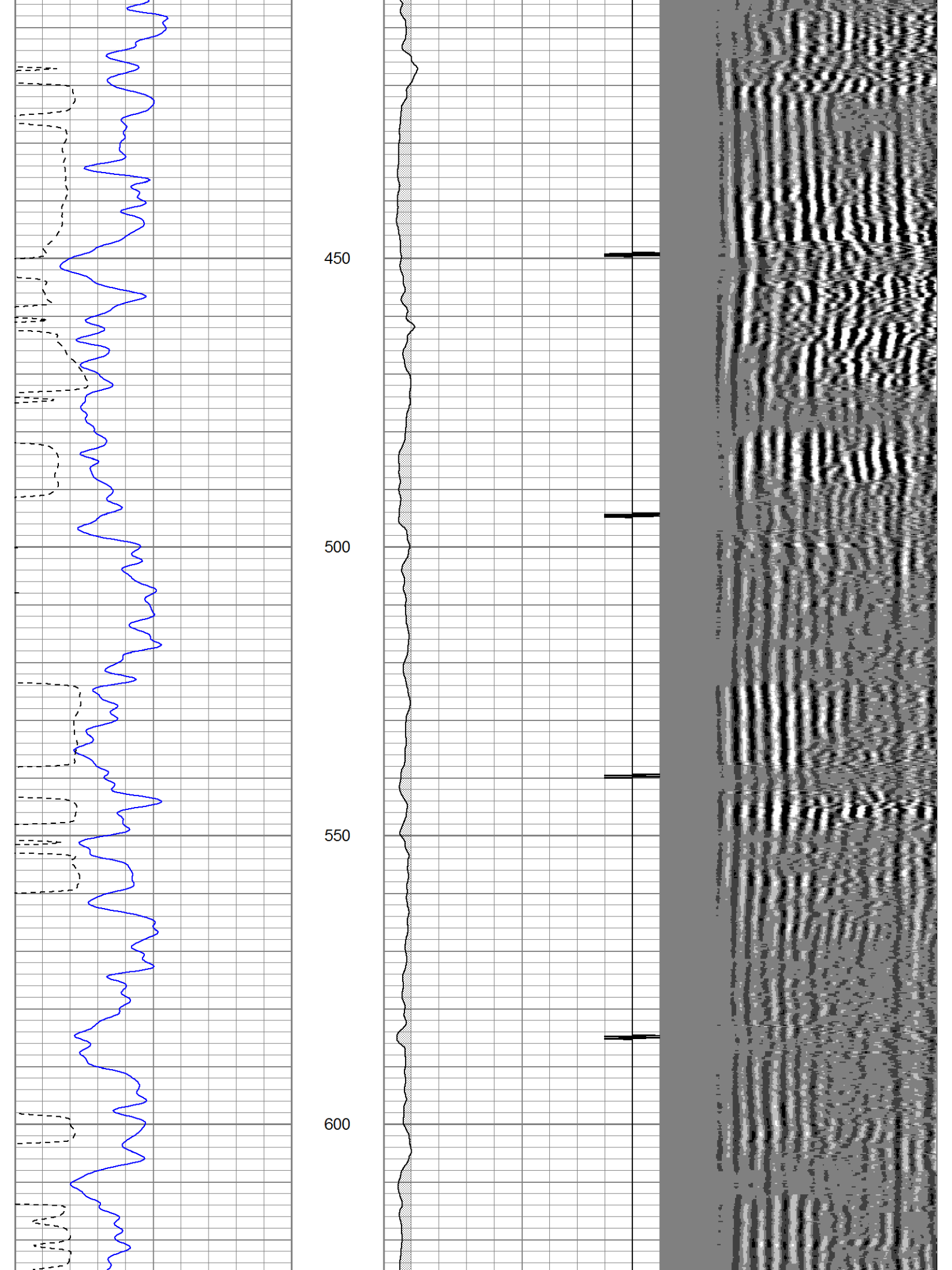
## Comments

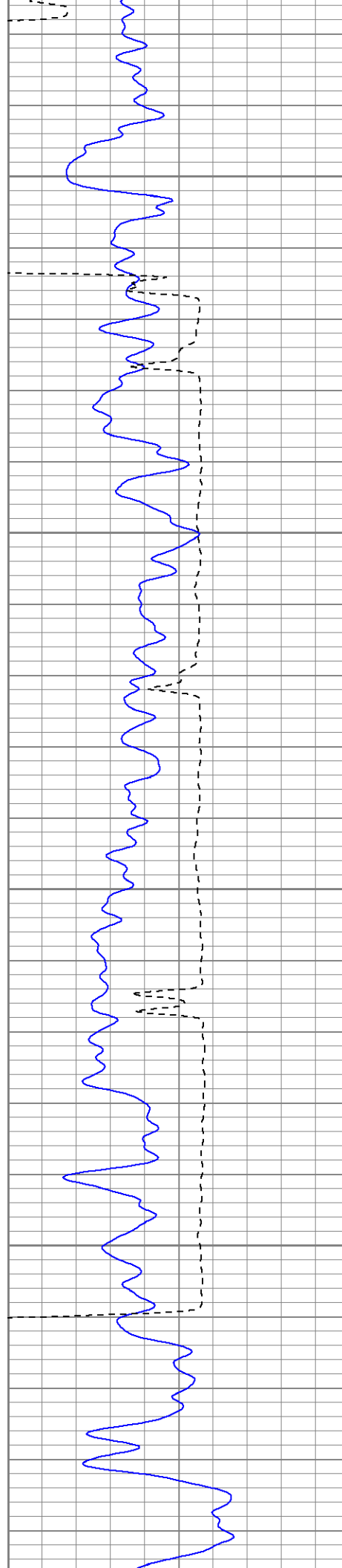
Database File: ac1-04cbl.db  
Dataset Pathname: pass4.1  
Presentation Format: cblrt  
Dataset Creation: Fri Jun 24 14:07:52 2011 by Calc Open-Cased 100827  
Charted by: Depth in Feet scaled 1:240

0	GR (GAPI)	200	0	AMP3 (mV)	100	200	Variable Density	1200
400	TT3 (usec)	200	18	CCL	-2			







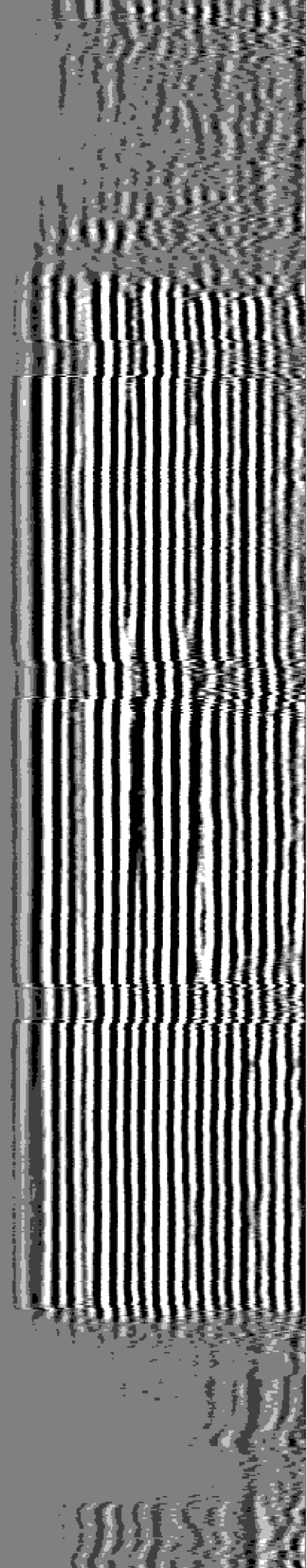
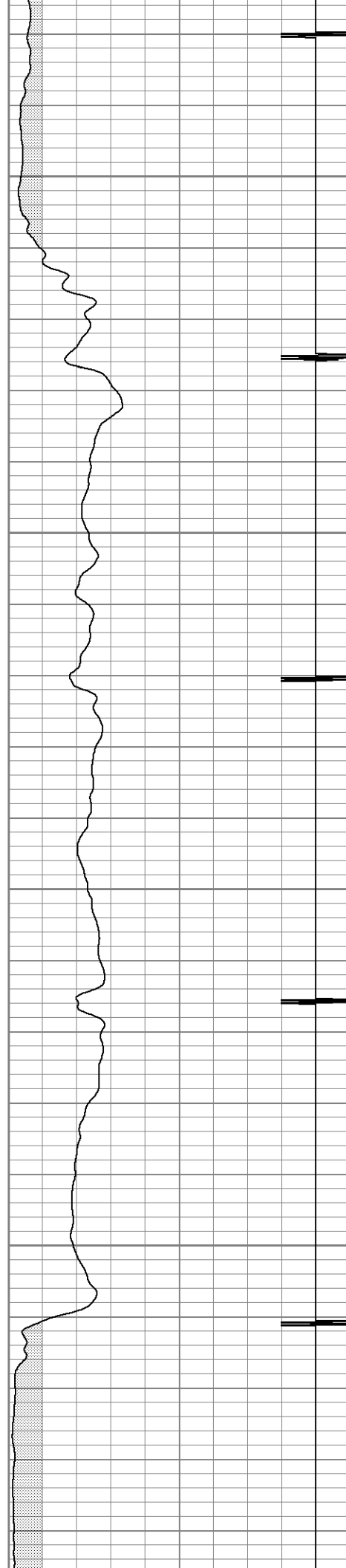


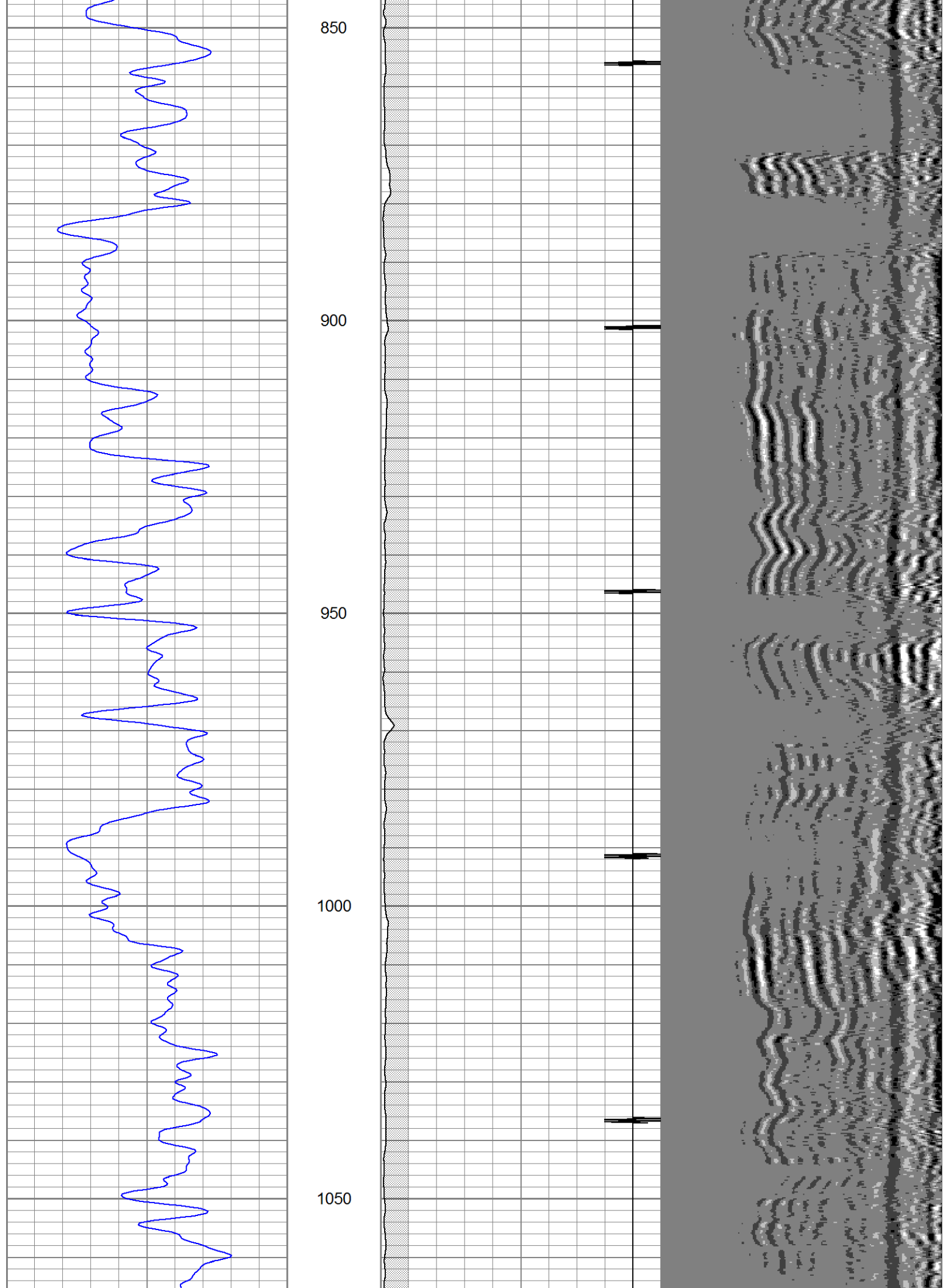
650

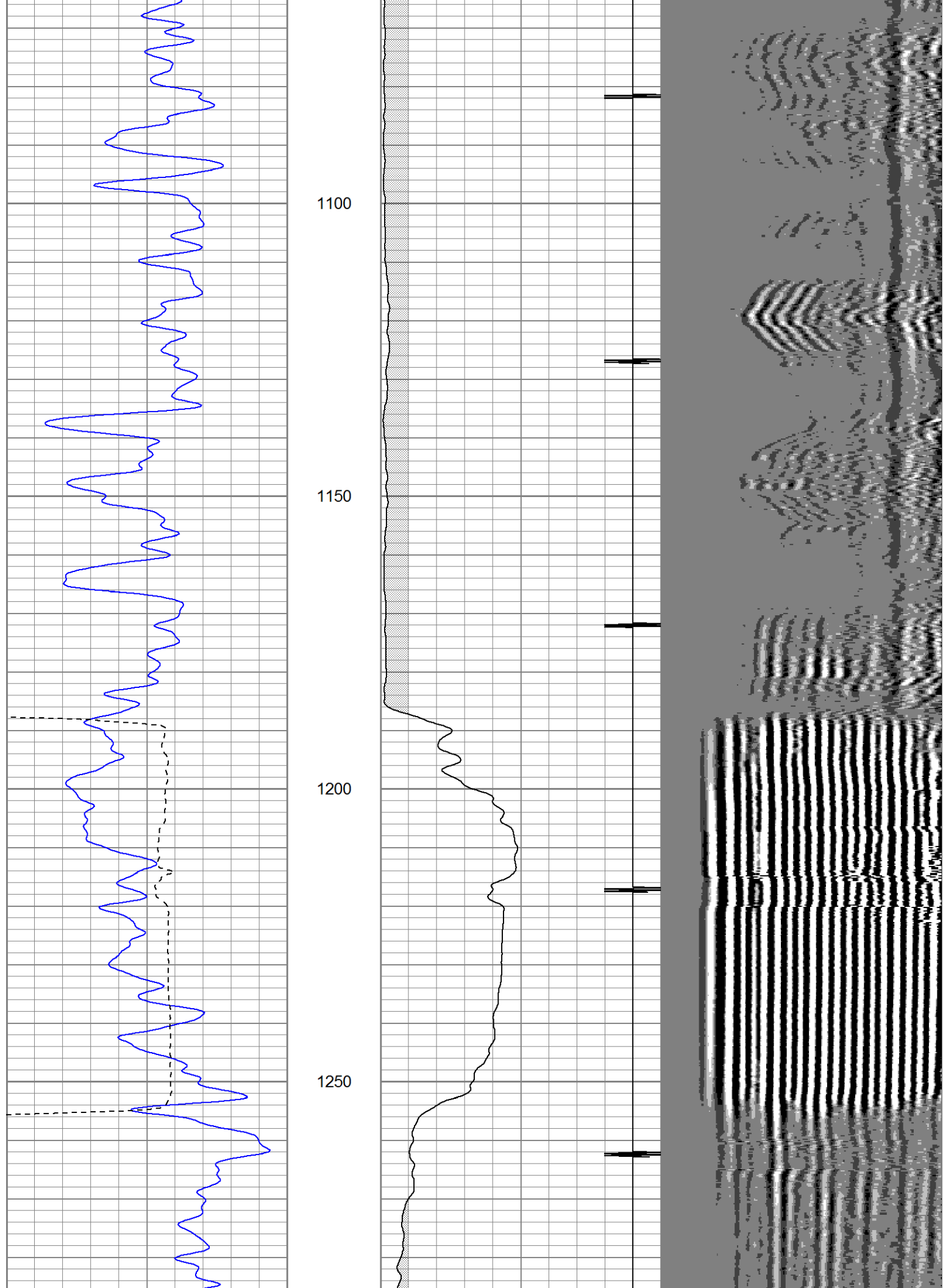
700

750

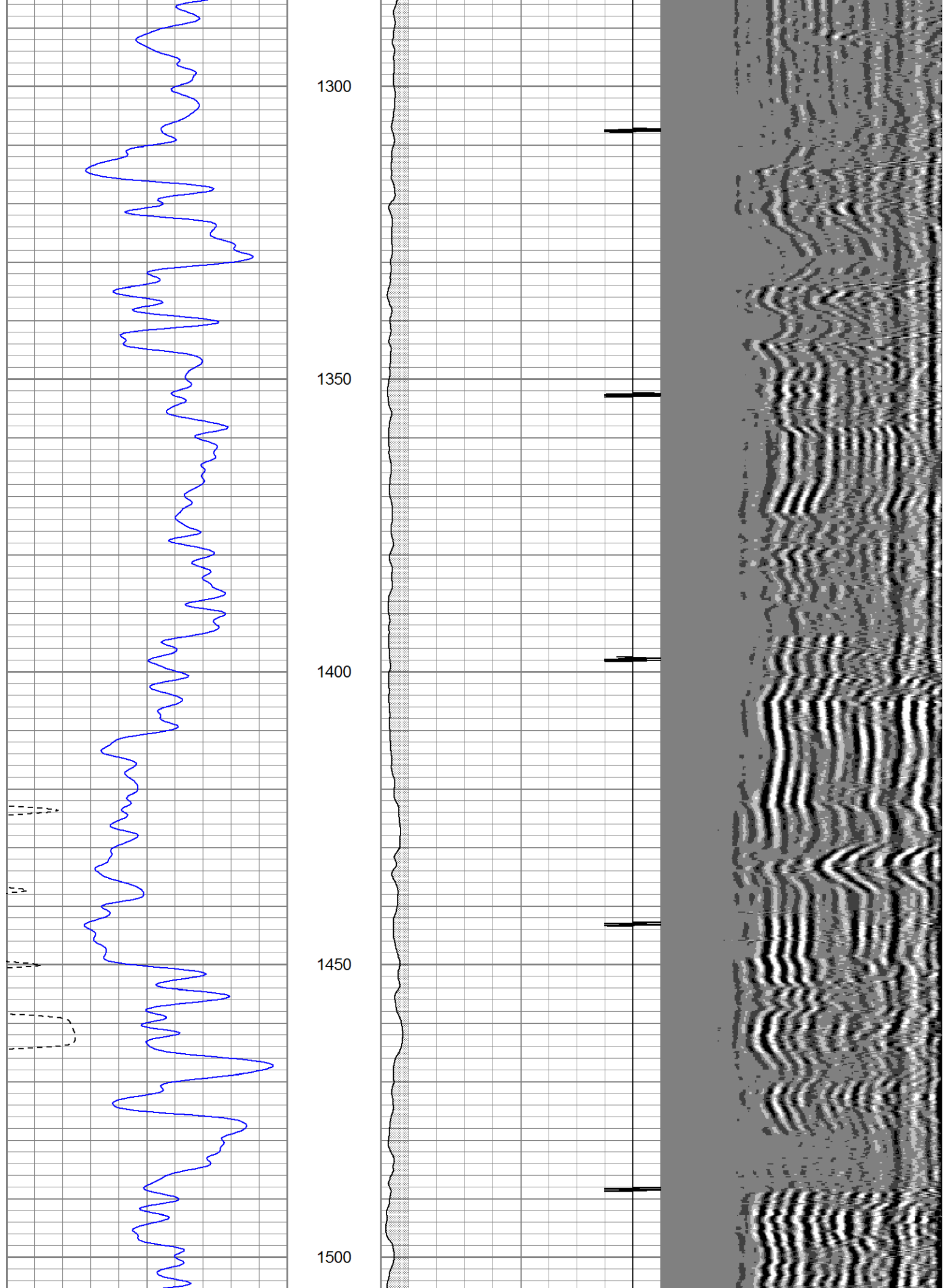
800



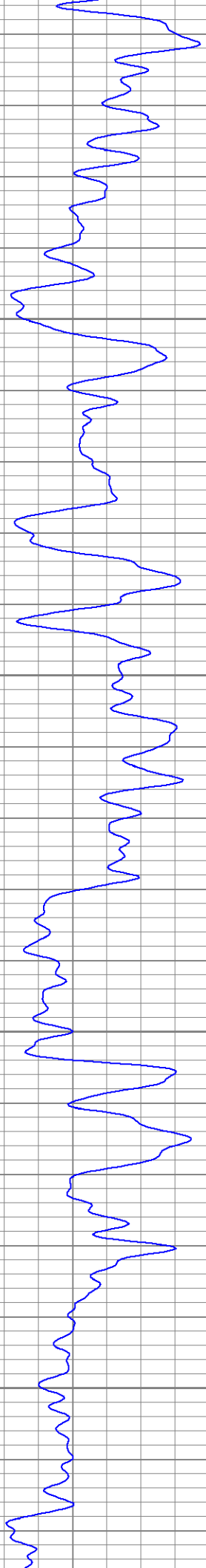










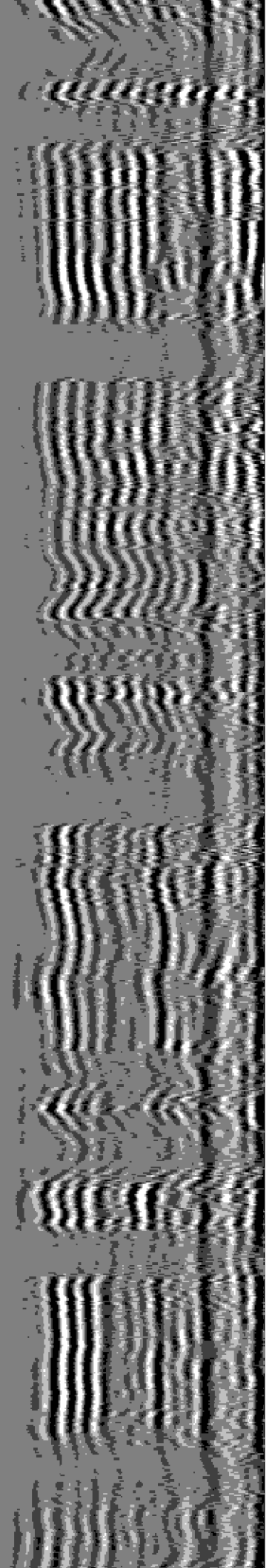
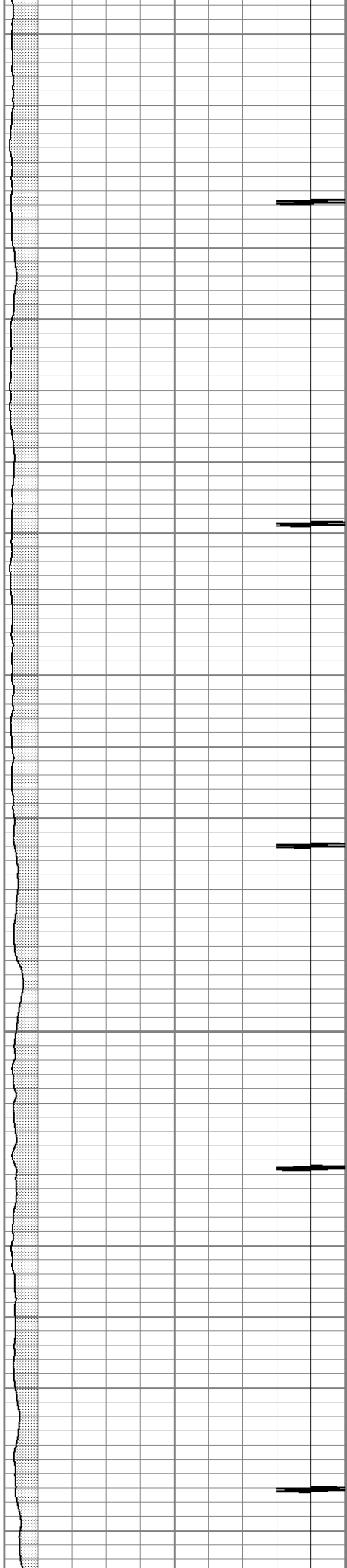


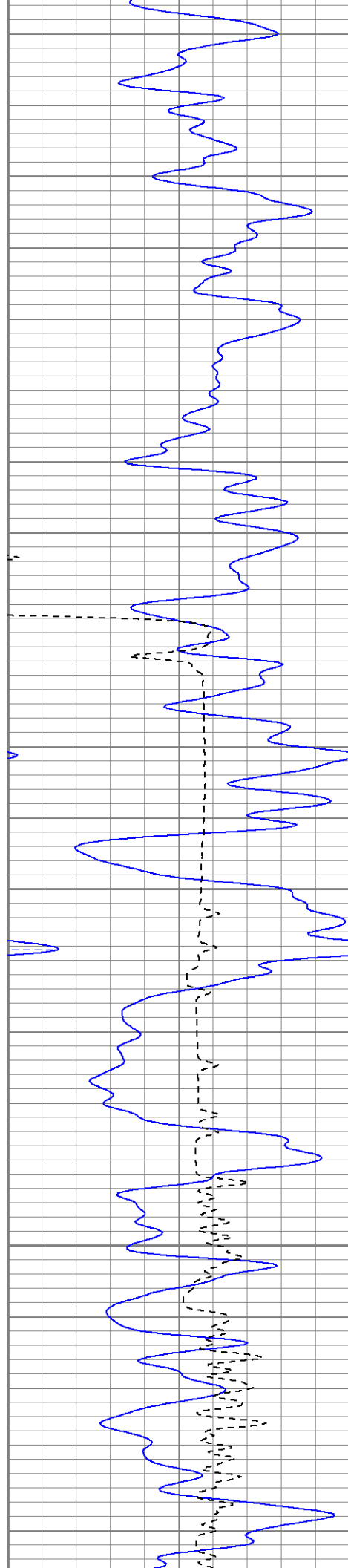
1550

1600

1650

1700



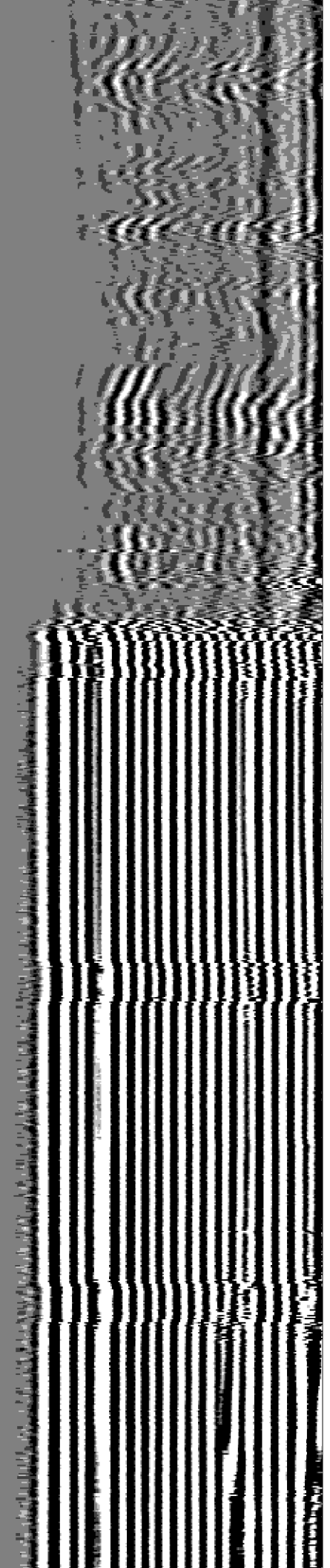
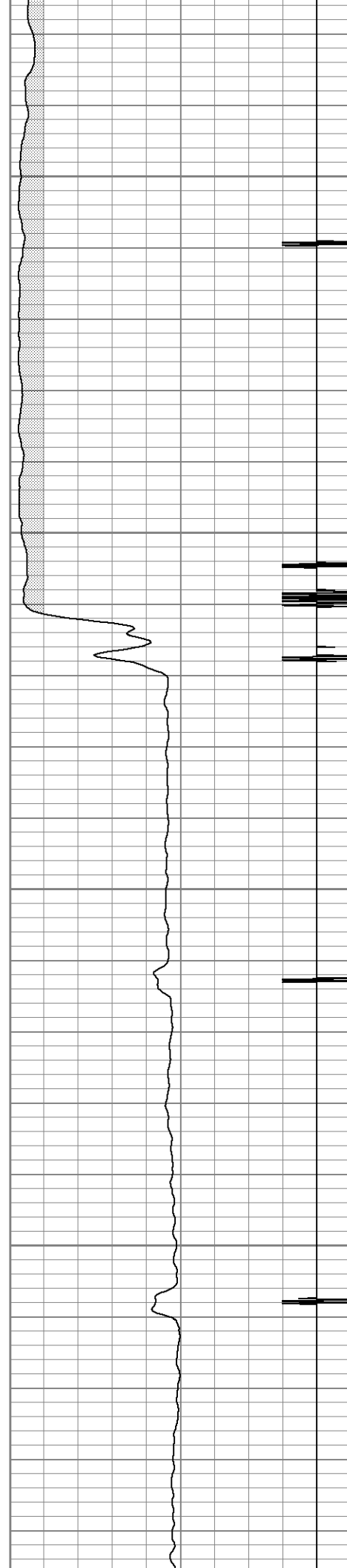


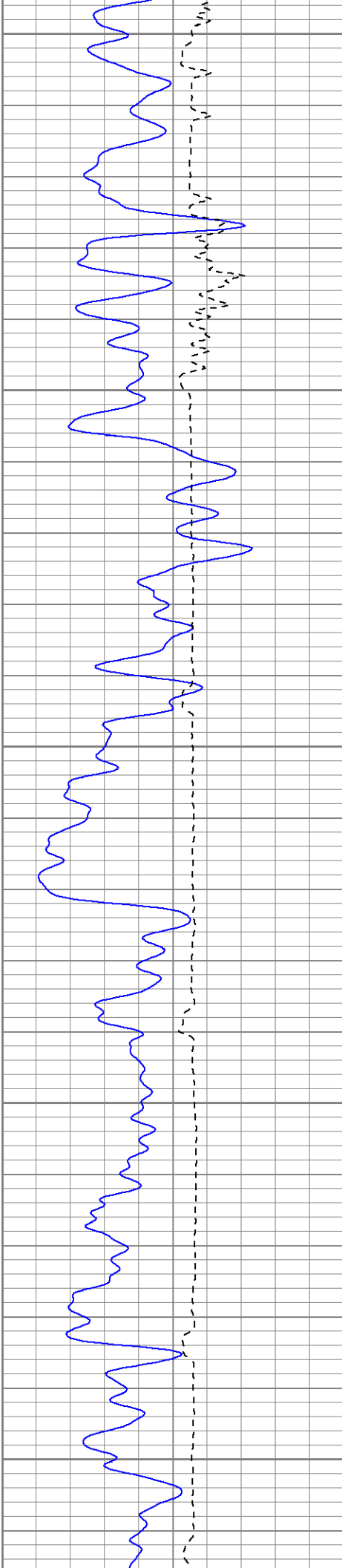
1750

1800

1850

1900





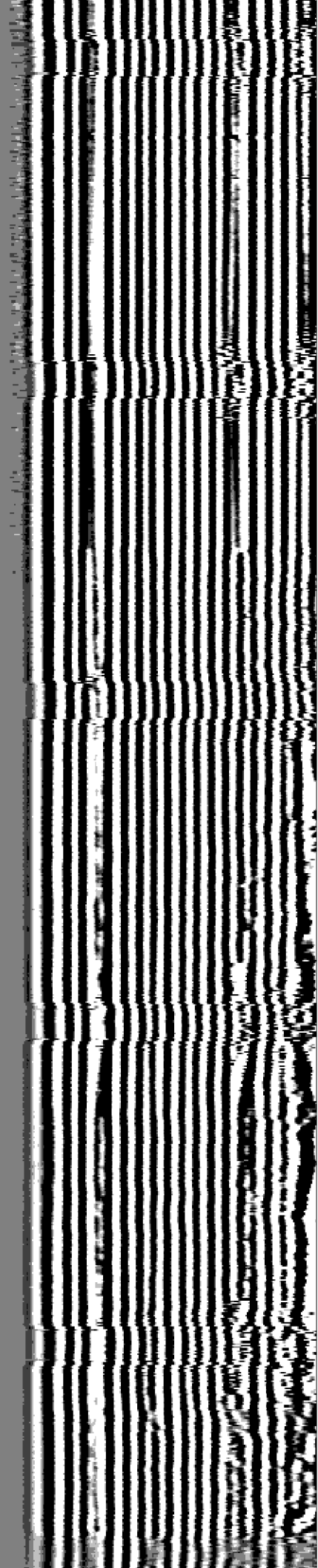
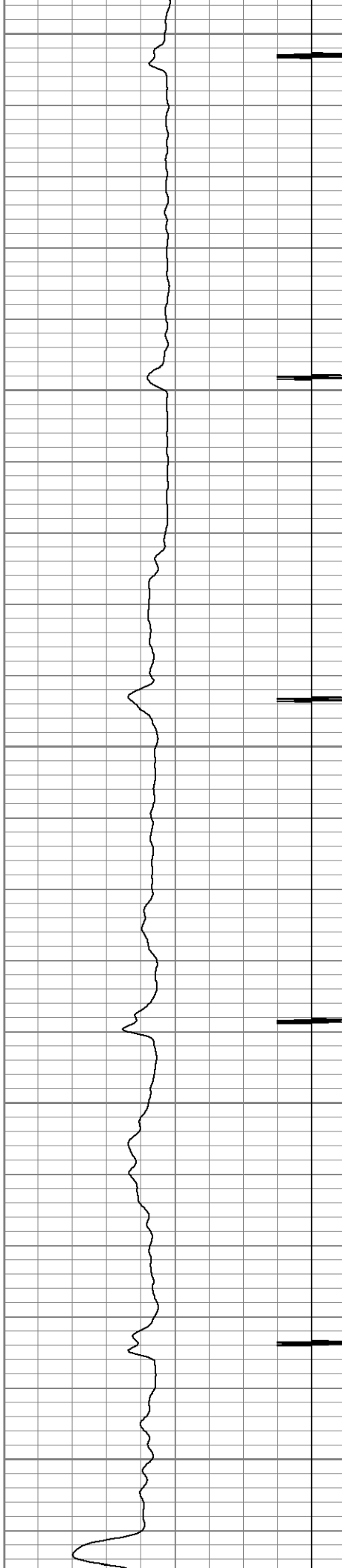
1950

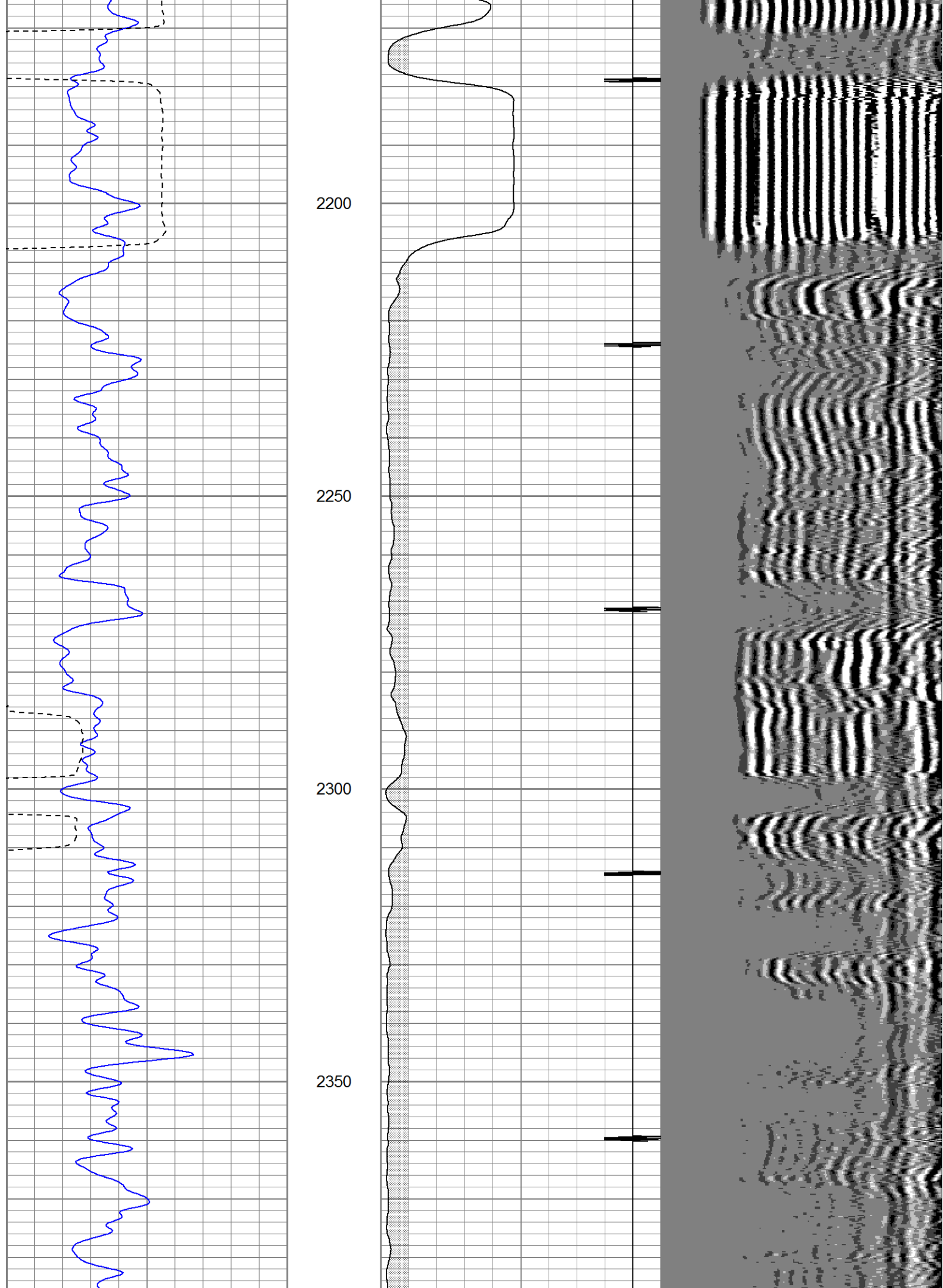
2000

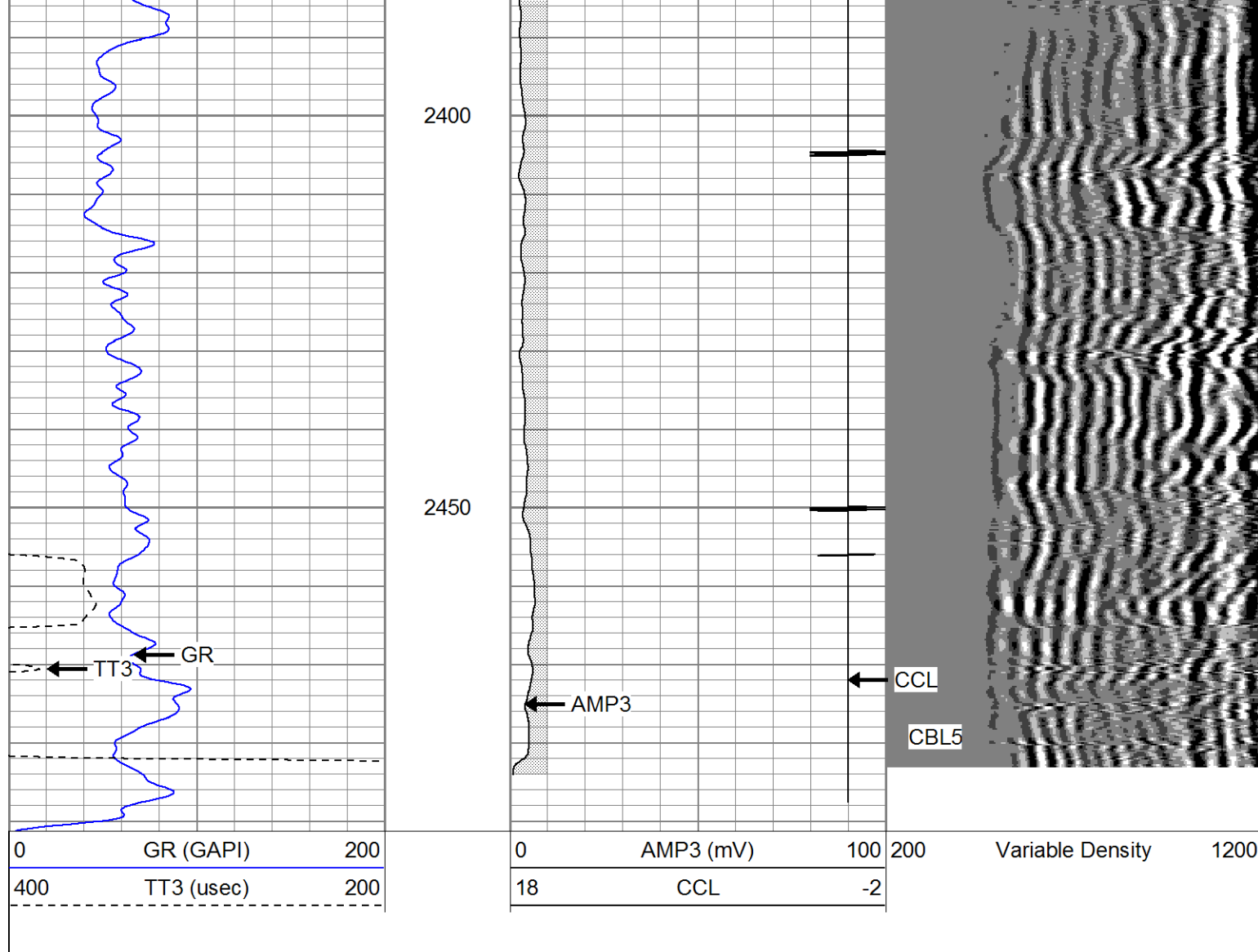
2050

2100

2150

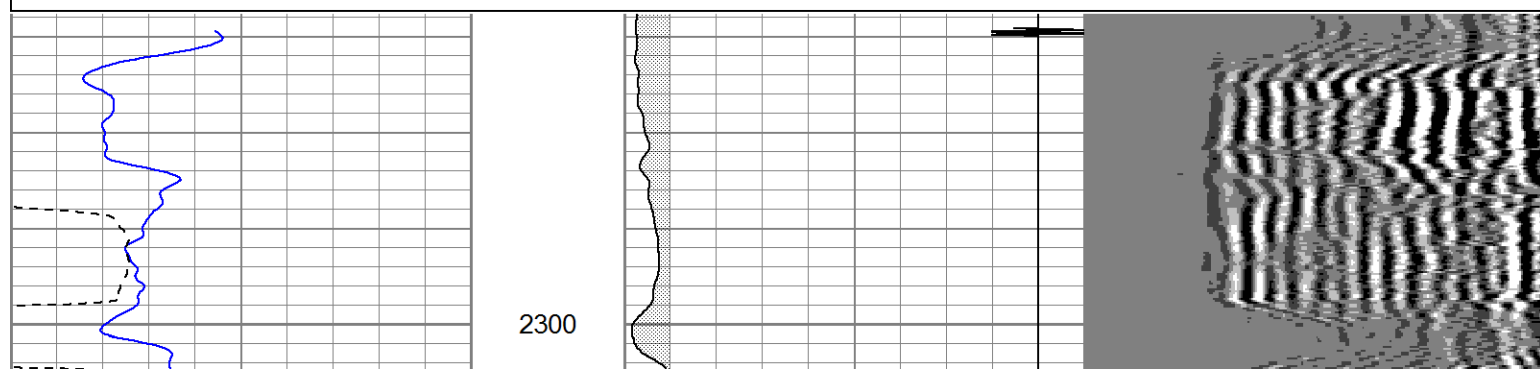
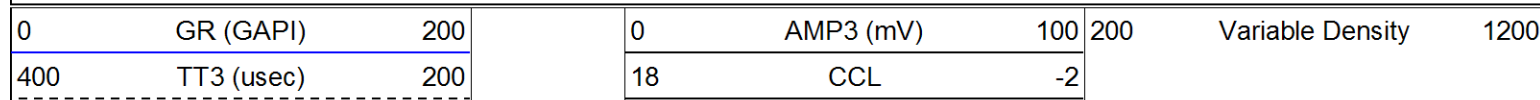


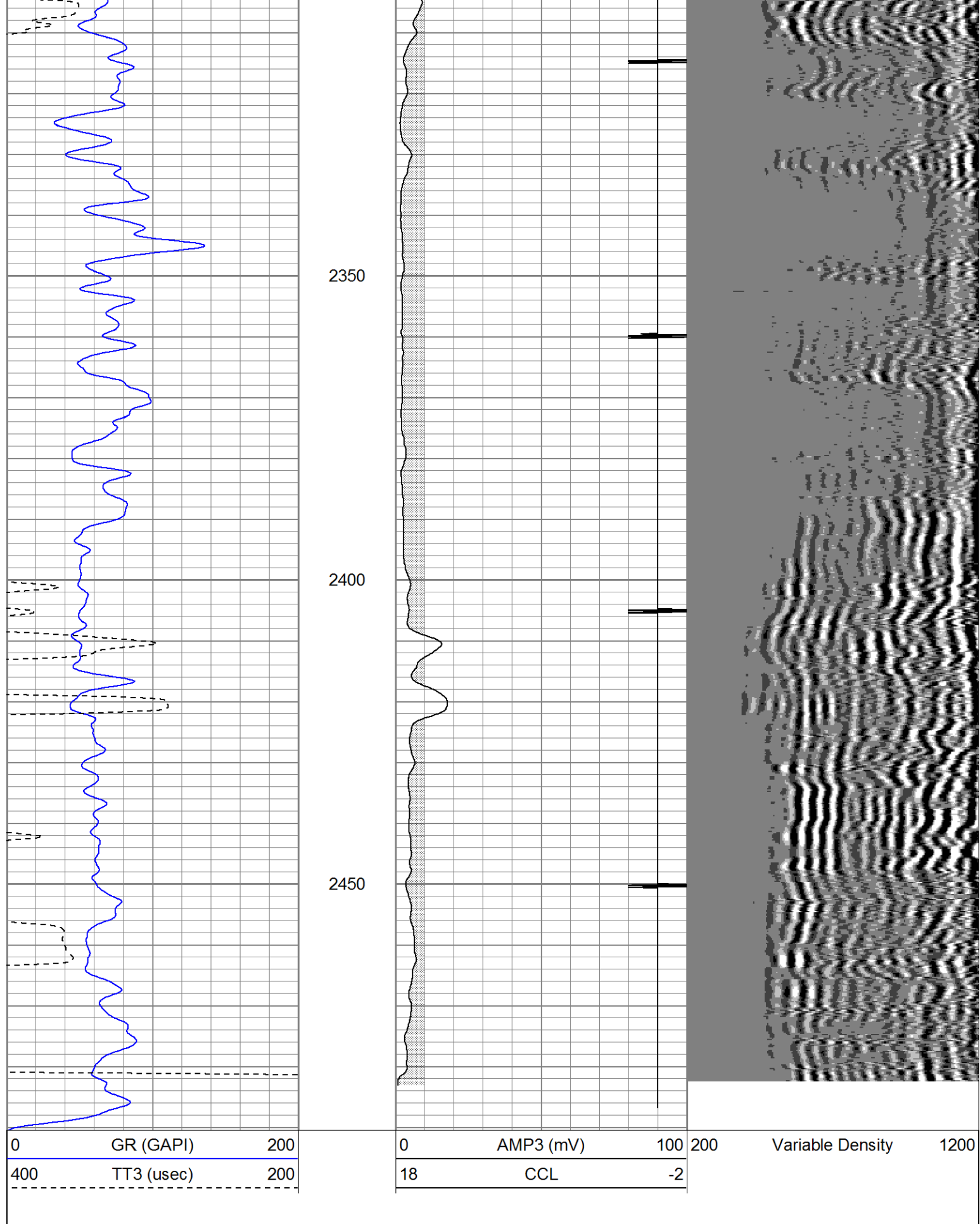




# Repeat Pass

Database File: ac1-04cbl.db  
 Dataset Pathname: pass3.1  
 Presentation Format: cblrt  
 Dataset Creation: Fri Jun 24 13:34:53 2011 by Calc Open-Cased 100827  
 Charted by: Depth in Feet scaled 1:240





### Calibration Report

Database File: ac1-04cbl.db  
Dataset Pathname: pass3.1  
Dataset Creation: Fri Jun 24 13:34:53 2011 by Gale Open Cased 100827



## Gamma Ray Calibration Report

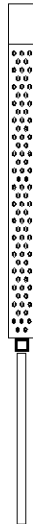
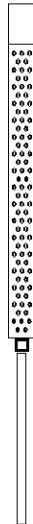
Serial Number:	275D_with_INC	
Tool Model:	275D_INC	
Performed:	Thu Sep 02 13:30:35 2010	
Calibrator Value:	200.0	GAPI
Background Reading:	50.0	cps
Calibrator Reading:	250.0	cps
Sensitivity:	1.0000	GAPI/cps

## Inclinometer Calibration Report

Performed:	Thu Sep 02 13:30:15 2010				
	Low Read.	High Read.	Low Ref.	High Ref.	
X Accelerometer	-3589.40	3580.00	-1.00	1.00	gee
Y Accelerometer	-3671.40	3520.20	-1.00	1.00	gee
Z Accelerometer					

## Cement Bond Log Calibration Report

Serial Number:	080201		
Tool Model:	DigitalCBL		
Performed:	Fri Jun 24 13:03:40 2011		
Depth:	659.925	ft	
Casing Diameter:	5.5	in	
	3' Spacing	5' Spacing	
Signal Zero:	1	0	mV
Calibrated Amplitude:	50	71.921	mV
Reading at Signal Zero:	0.00256348	0.00249023	V
Reading in Free Pipe:	1.4	0.678931	V
Gain:	35.0642	106.323	
Offset:	0.910114	-0.264769	

Sensor	Offset (ft)	Schematic	Description	Len (ft)	OD (in)	Wt (lb)
WVF3	9.08		Probedig-DigitalCBL (080201) 2 3/4 Bond Tool	8.77	2.75	92.00
WVF5	8.08					
CCL	3.50		rub	0.33	1.75	0.80
ACCX	1.83					
ACCY	1.83					
ACCZ	1.83		GR-275D_INC (275D_with_INC) 2-3/4" GR-CCL with Inclination	4.50	2.75	
GR	0.83					

Dataset:	ac1-04cbl.db: field/well/run1/pass3.1
Total Length:	13.60 ft
Total Weight:	92.80 lb
O.D.	2.75 in