



CEMENT BOND LOG

Company		ENCANA OIL & GAS INC. (USA)	
Well		WANDELL 6-0-7	
Field		WATTENBURG	
County		WELD	
State		COLORADO	
Location:		API # : 05123324670000	
SEC: 7 TWP: 2N RGE: 67W		SHL: 935' FNL & 1135' FEL NE NE	
Permanent Datum		GROUND LEVEL	
Log Measured From		KELLY BUSHING	
Drilling Measured From		KELLY BUSHING	
Elevation		4892'	
Other Services		NONE	
Date		APRIL-2-2011	
Run Number		ONE	
Depth Driller		8023'	
Depth Logger		7928'	
Bottom Logged Interval		7928'	
Top Log Interval		2700'	
Open Hole Size		7.875"	
Type Fluid		WATER	
Density / Viscosity		~8.3#	
Max. Recorded Temp.		N/A	
Estimated Cement Top		2920'	
Time Well Ready		N/A	
Time Logger on Bottom		N/A	
Equipment Number		W061/PR008	
Location		AULT	
Recorded By		C.PACE	
Witnessed By		T.FLYNN	
Borehole Record		Tubing Record	
Run Number		Bit	
ONE		7.875"	
TWO		UNK	
Casing Record		Size	
Surface String		8.625"	
Prot. String		4.5"	
Production String		11.60#	
Liner		8023'	

<<< Fold Here >>>

All interpretations are opinions based on inferences from electrical or other measurements and we cannot and do not guarantee the accuracy or correctness of any interpretation, and we shall not, except in the case of gross or willful negligence on our part, be liable or responsible for any loss, costs, damages, or expenses incurred or sustained by anyone resulting from any interpretation made by any of our officers, agents or employees. These interpretations are also subject to our general terms and conditions set out in our current Price Schedule.

Comments

SHORT JOINT @ 7054' - 7077'
(LOG NOT CORRELATED TO ANY OTHER LOGS)

WE APPRECIATE YOUR BUSINESS, MESA WIRELINE LLC, AULT, CO. (970) 834-2495



MAIN PASS

5"=100'

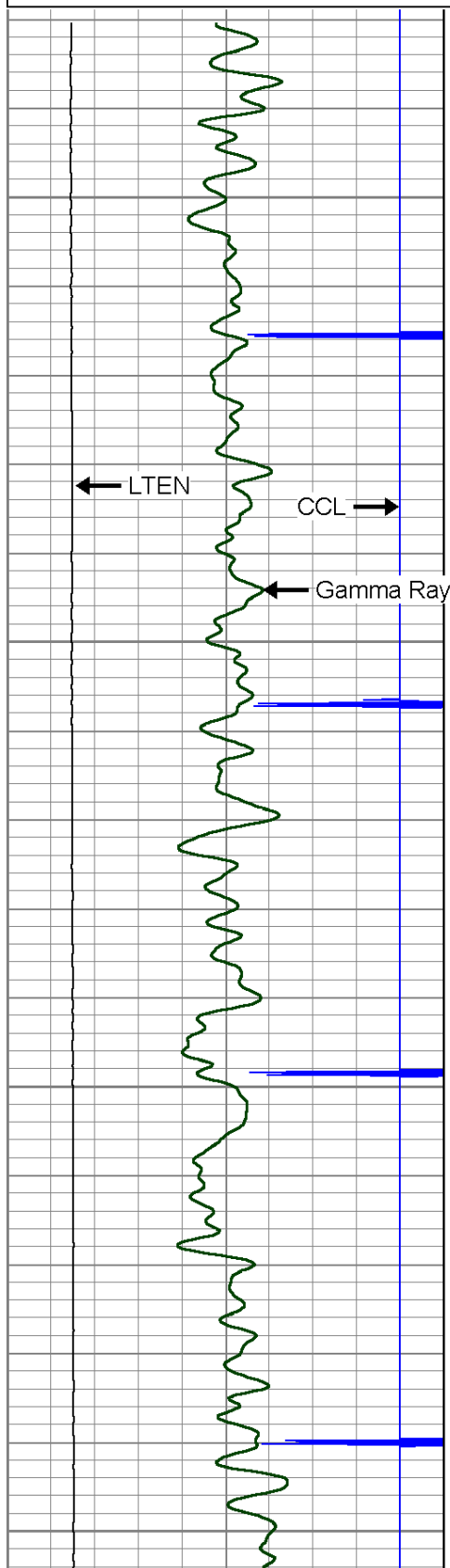
Mesa Wireline

Database File: wandell 6-0-7.db
Dataset Pathname: pass3
Presentation Format: cbl01
Dataset Creation: Sat Apr 02 08:03:30 2011 by Log SCH 110223
Charted by: Depth in Feet scaled 1:240

9	Collar Locator	-1
0	Gamma Ray (GAPI)	150
0	LTEN (lb)	4000

0	Amplified Amplitude (mV)	10
0	Amplitude (mV)	100
0	Travel Time (usec)	270

200 Variable Density 1200

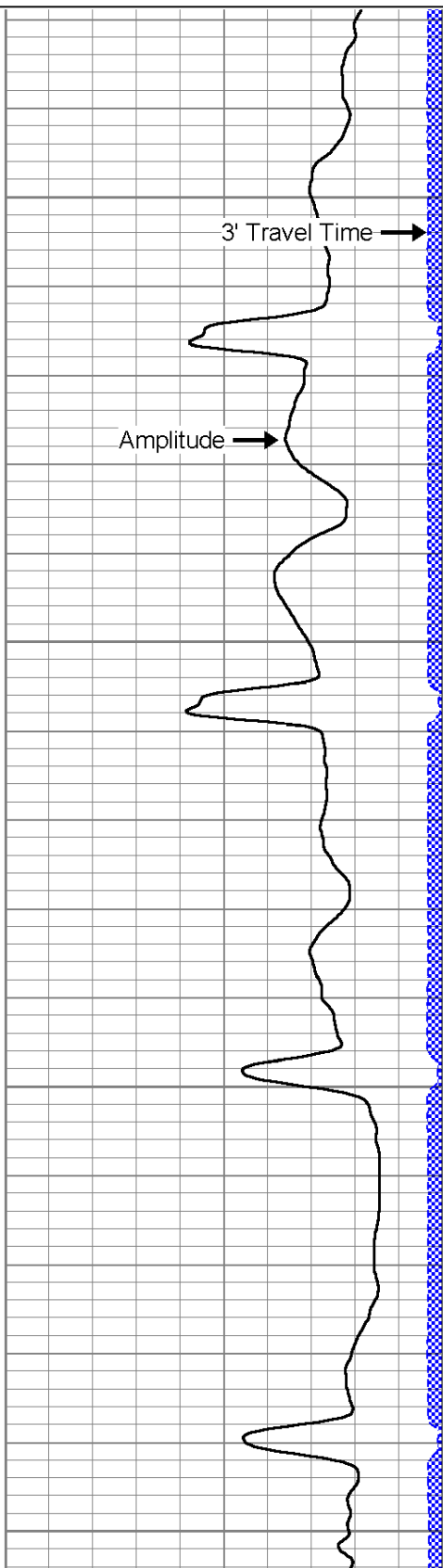


2700

2750

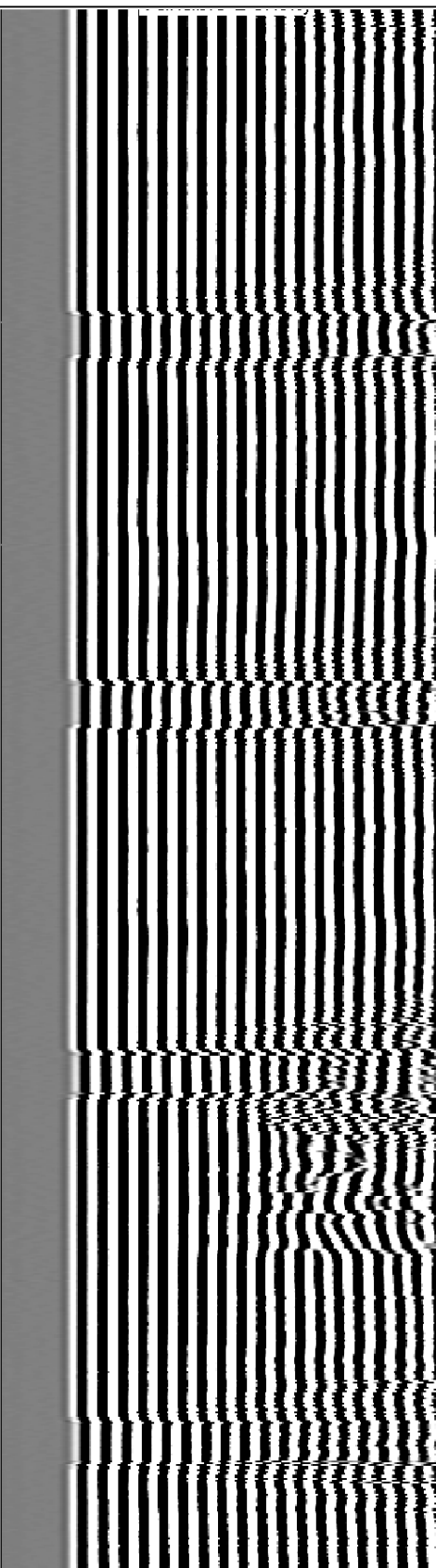
2800

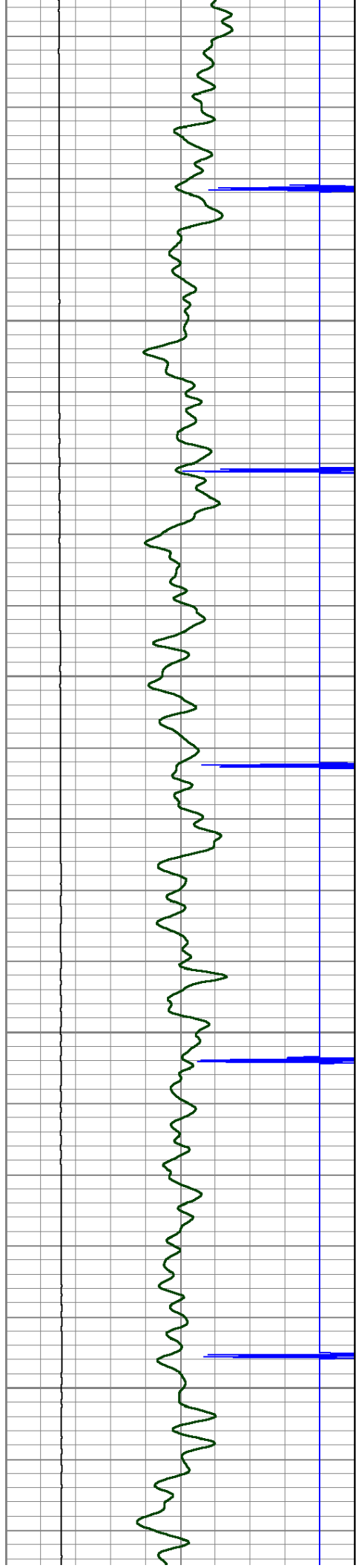
2850



3' Travel Time

Amplitude



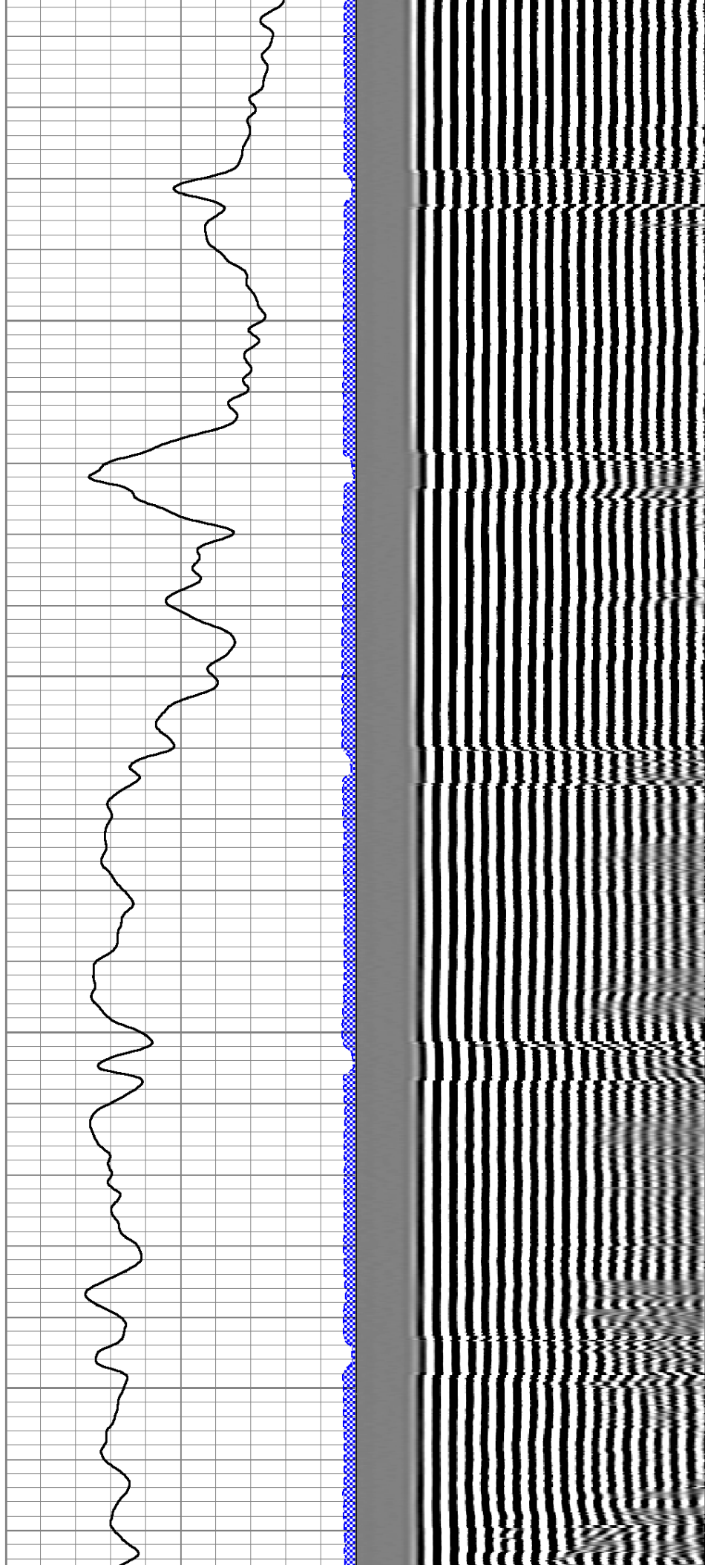


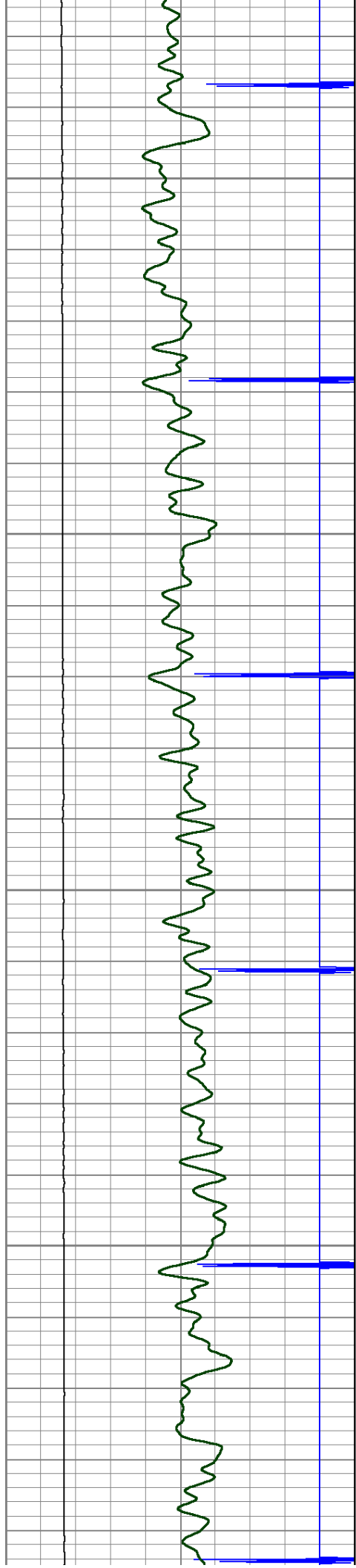
2900

2950

3000

3050



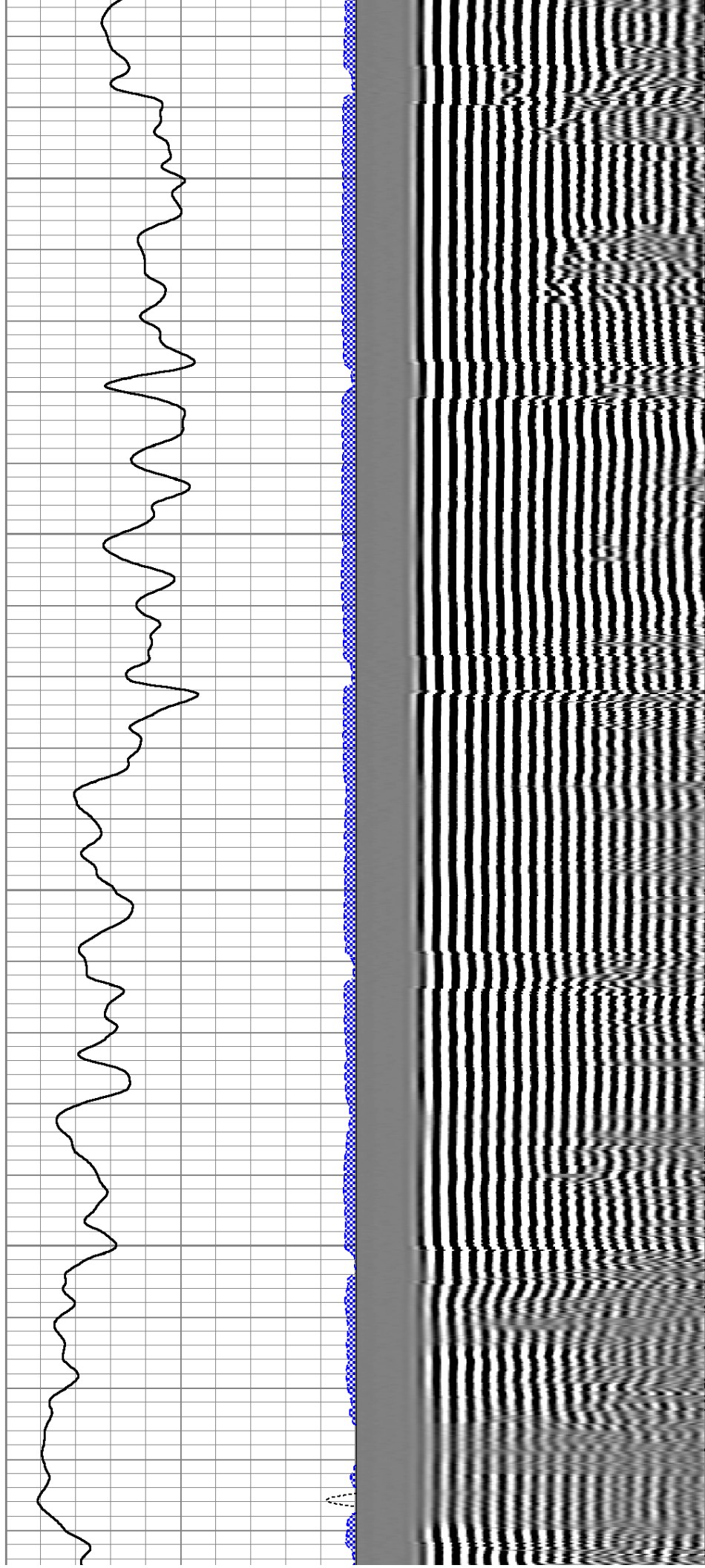


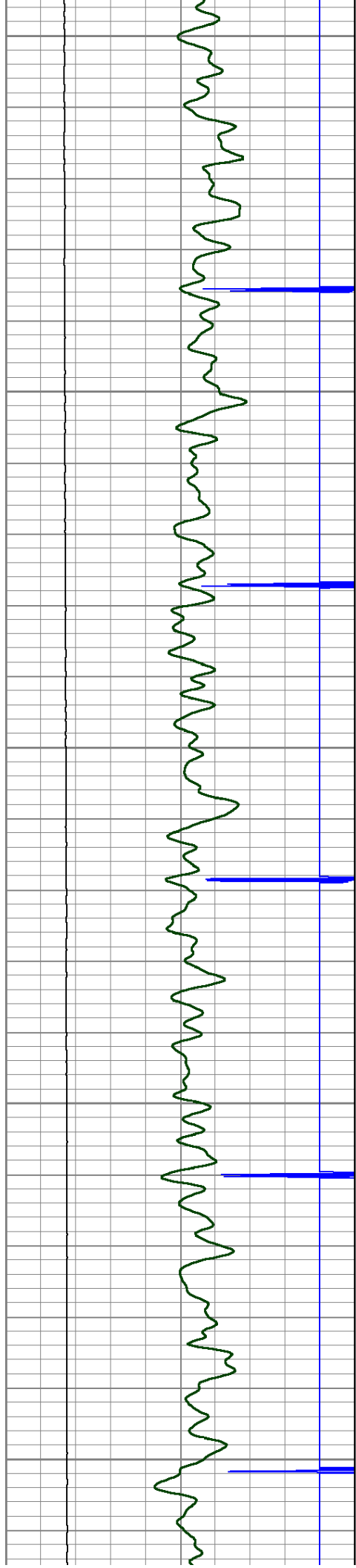
3100

3150

3200

3250





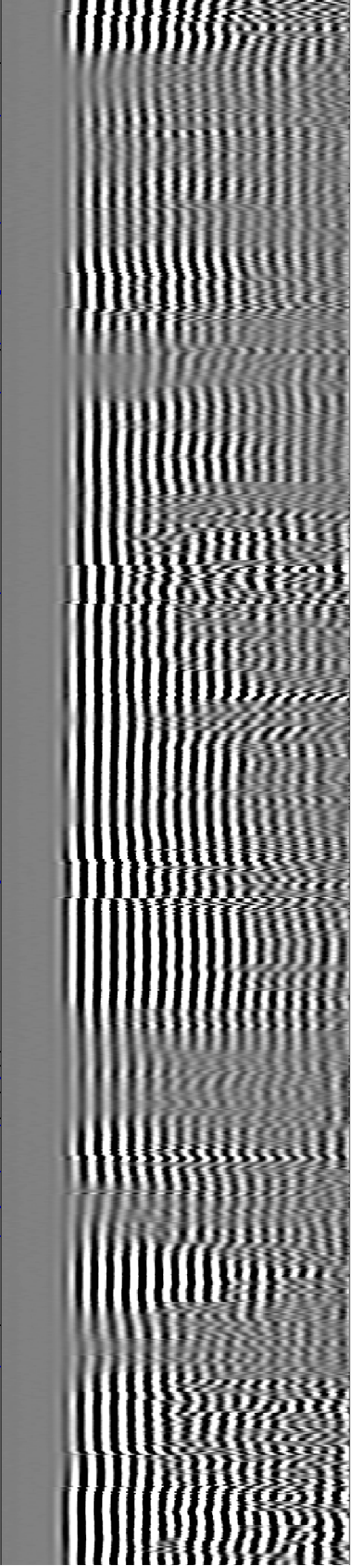
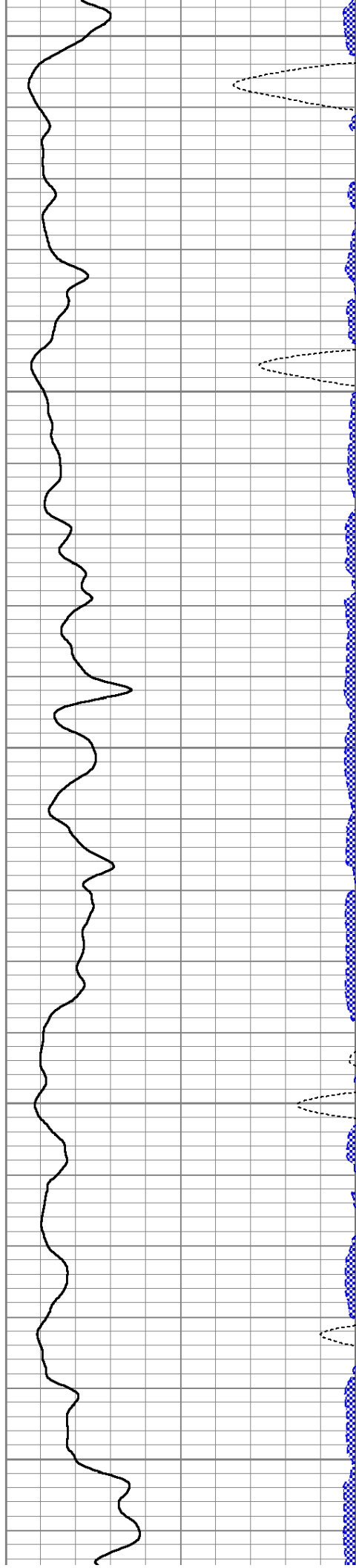
3300

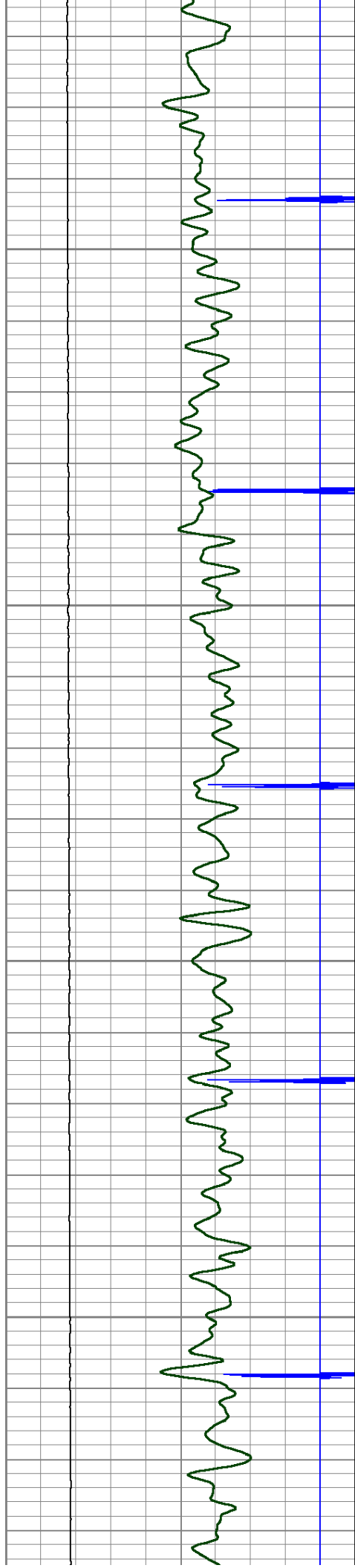
3350

3400

3450

3500



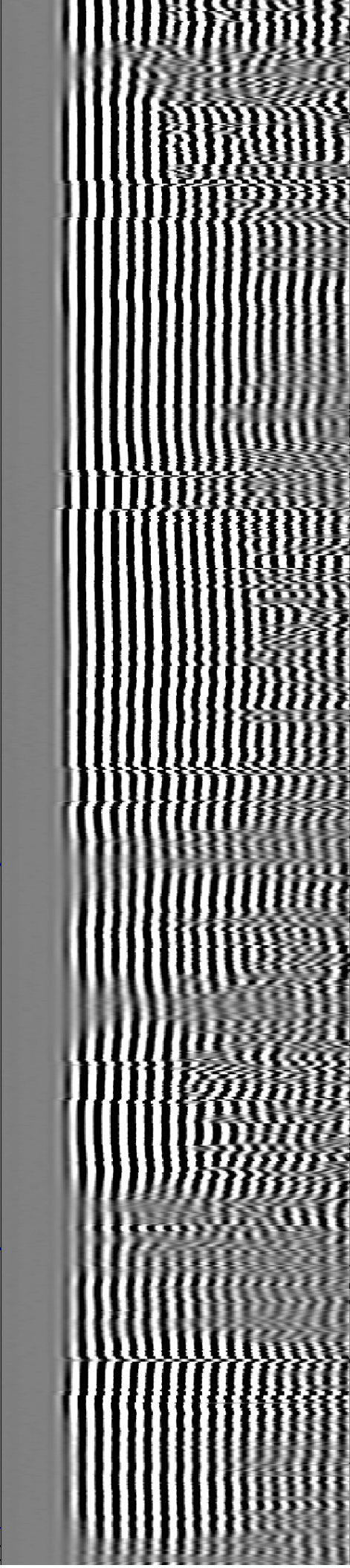
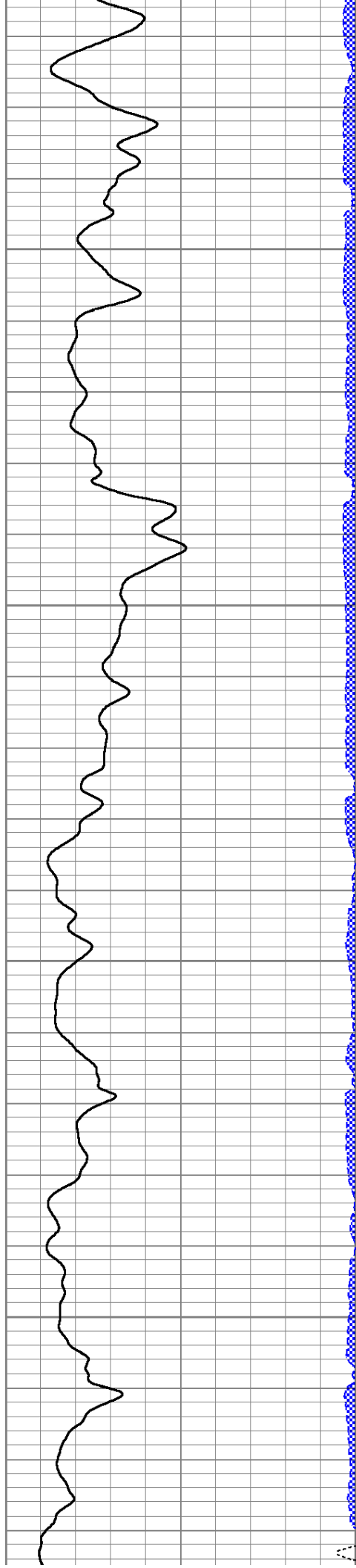


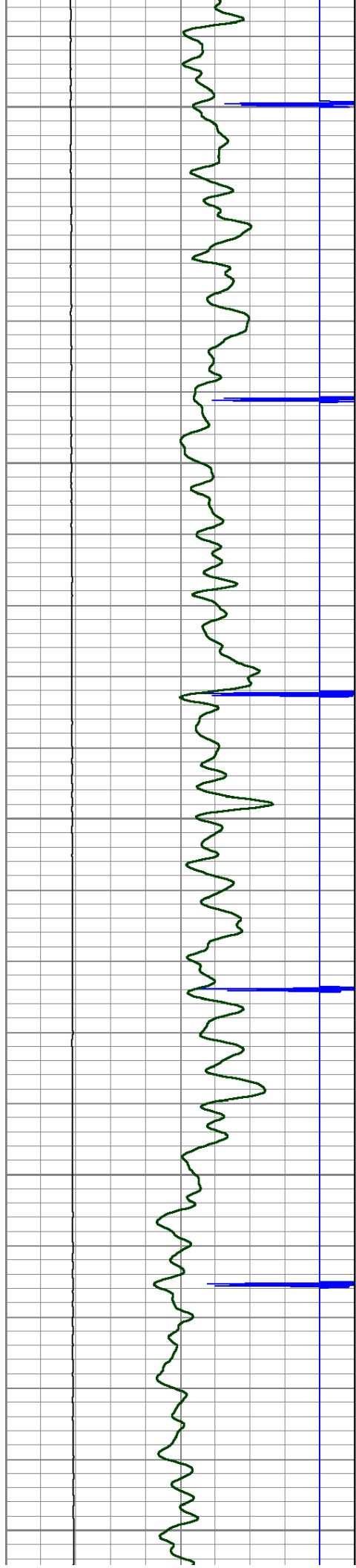
3550

3600

3650

3700





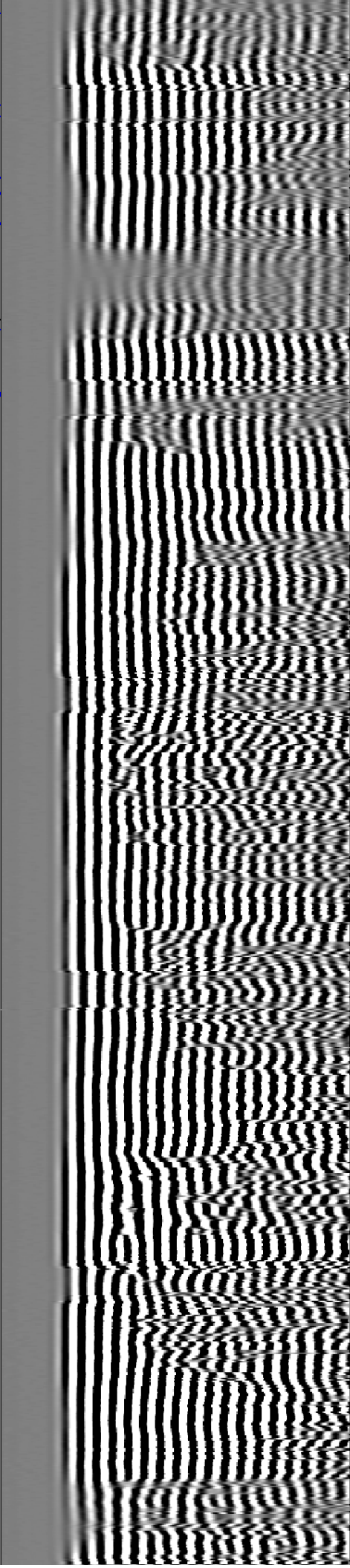
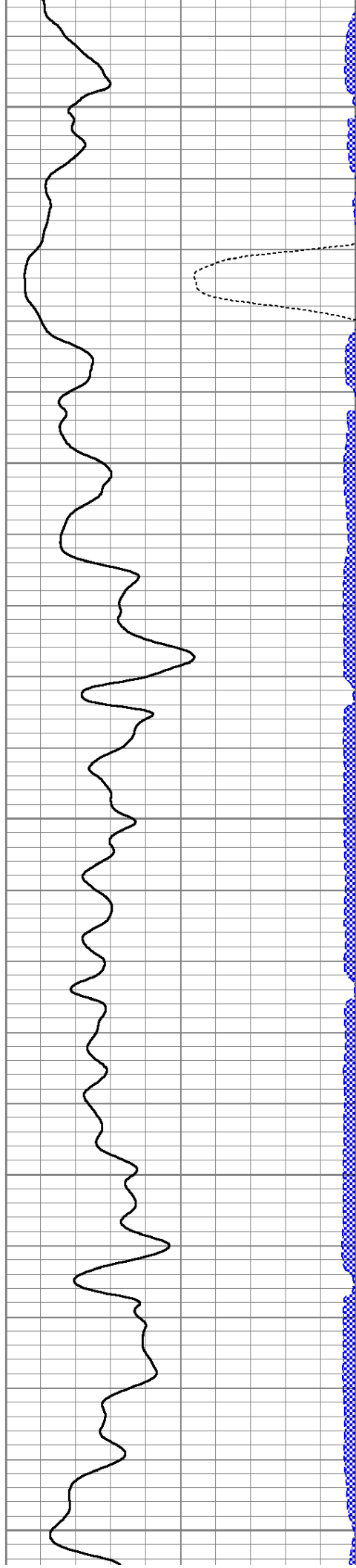
3750

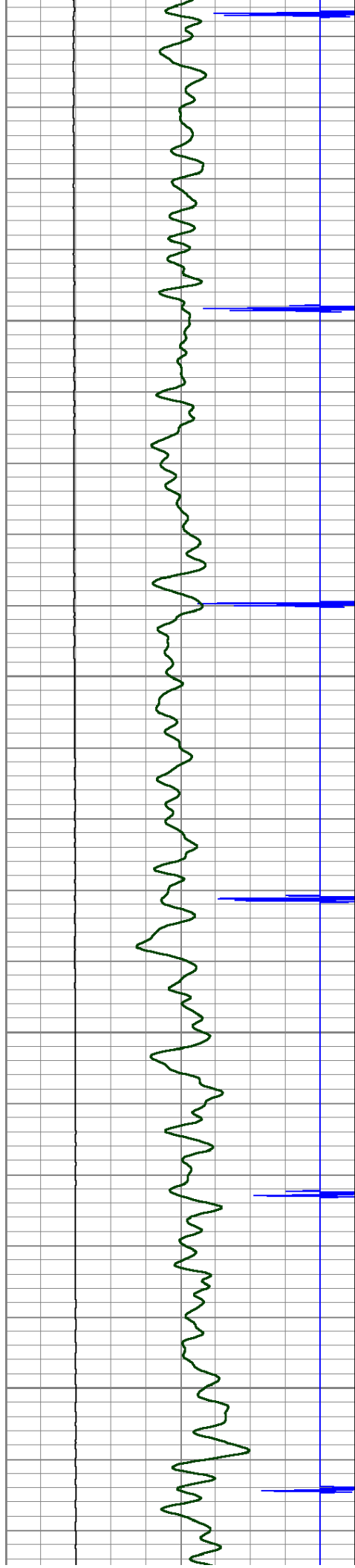
3800

3850

3900

3950



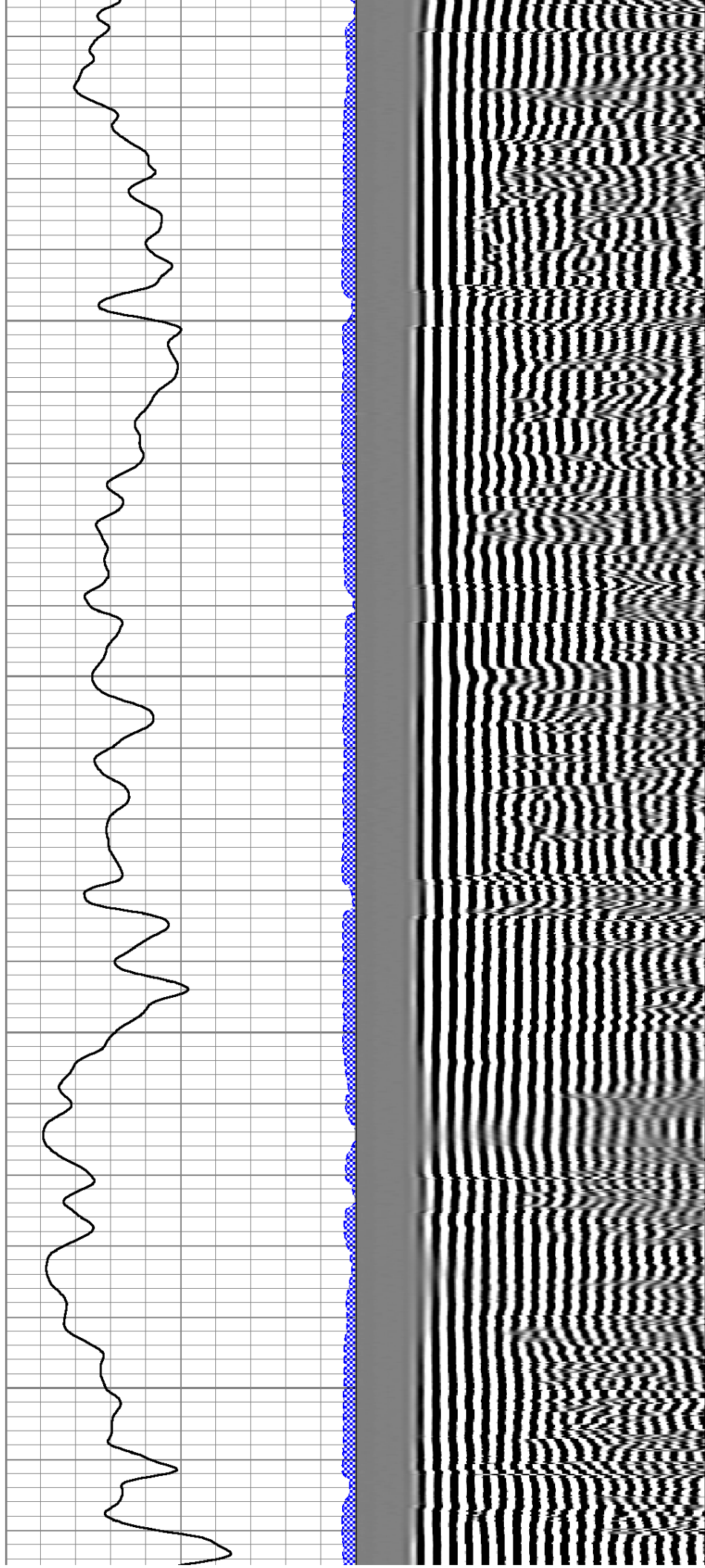


4000

4050

4100

4150



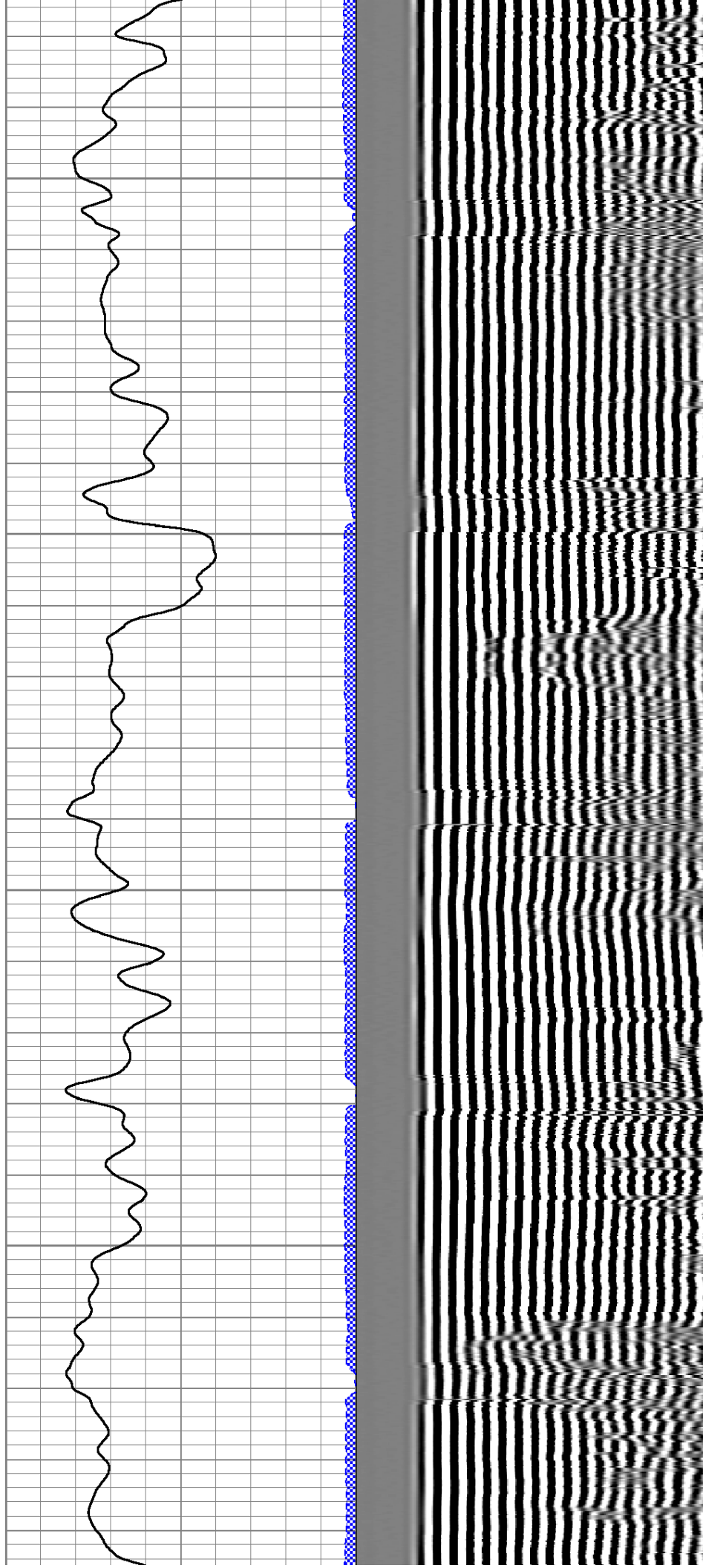


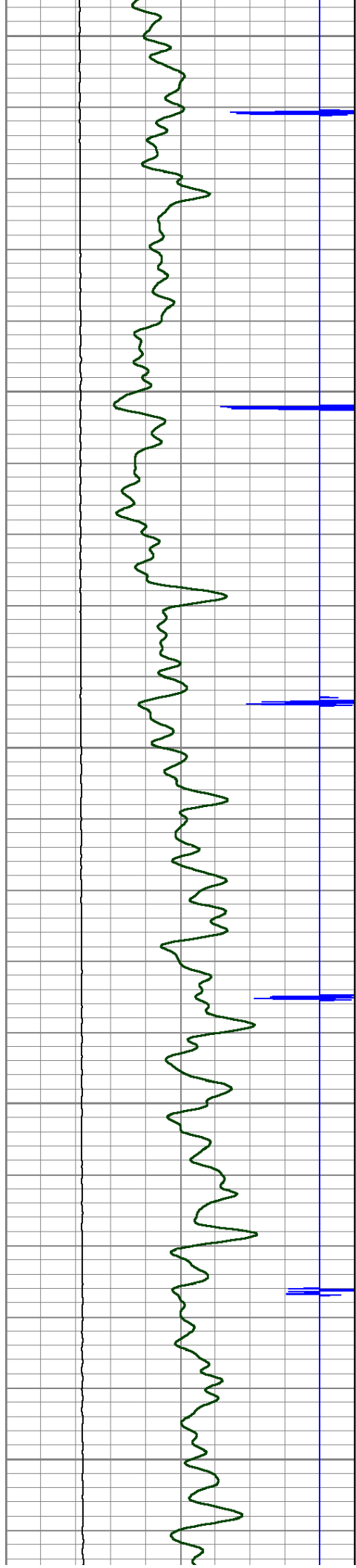
4200

4250

4300

4350





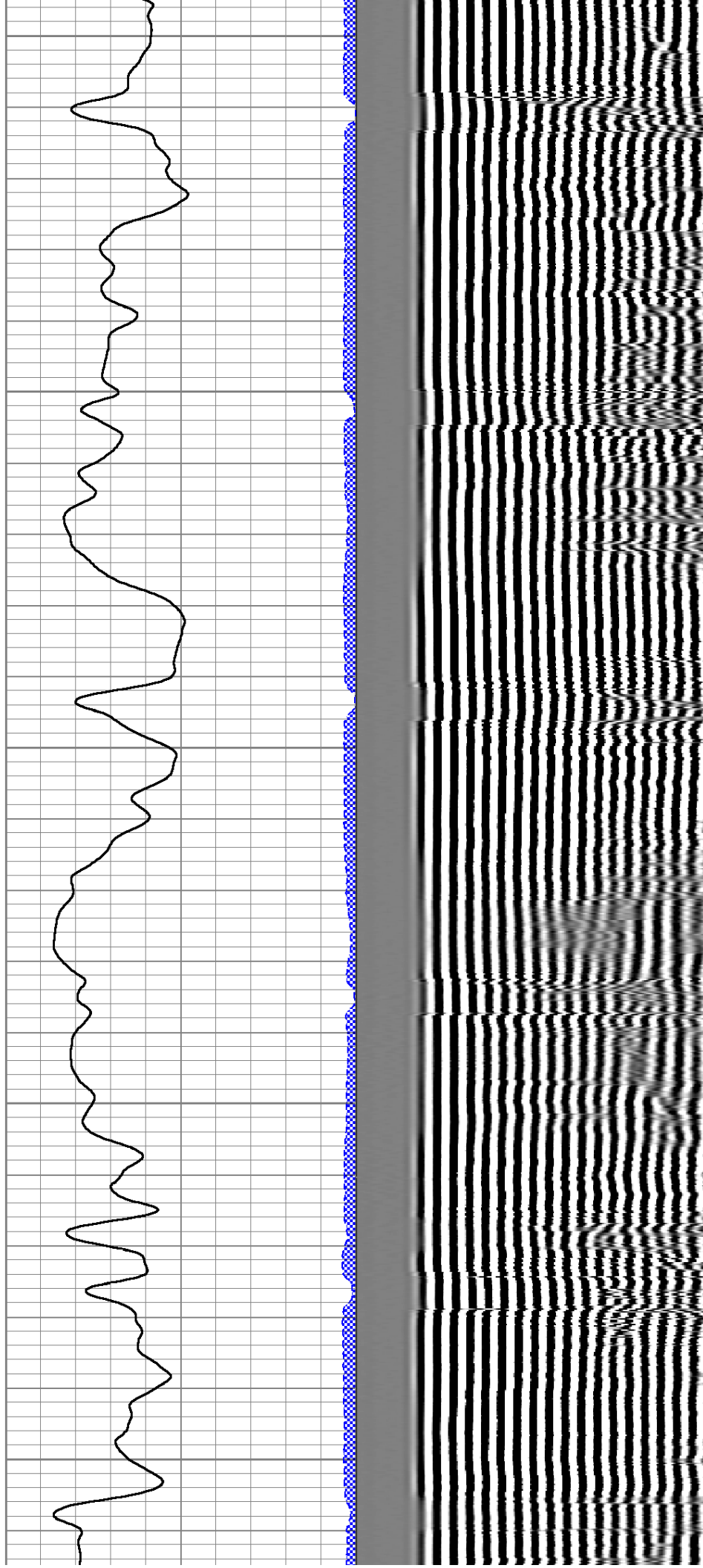
4400

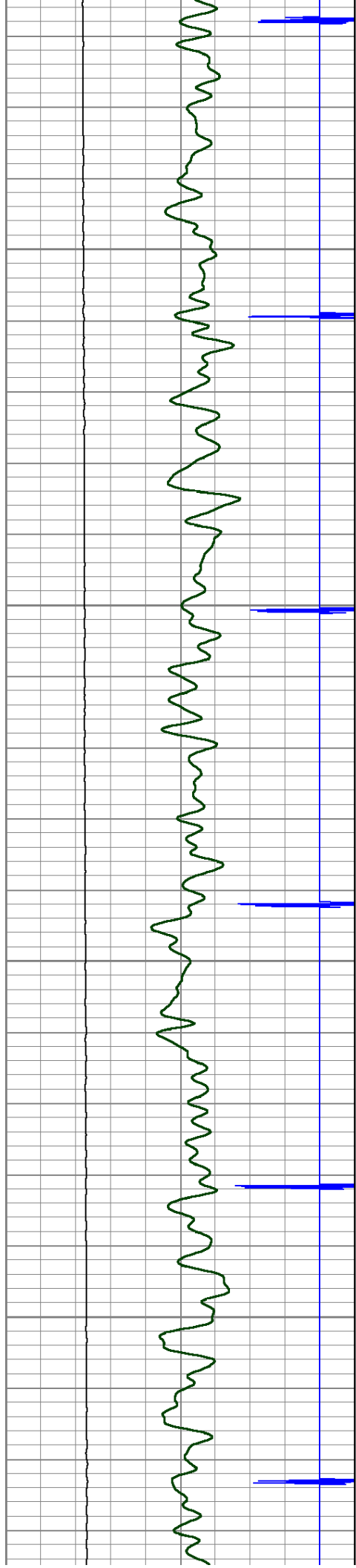
4450

4500

4550

4600



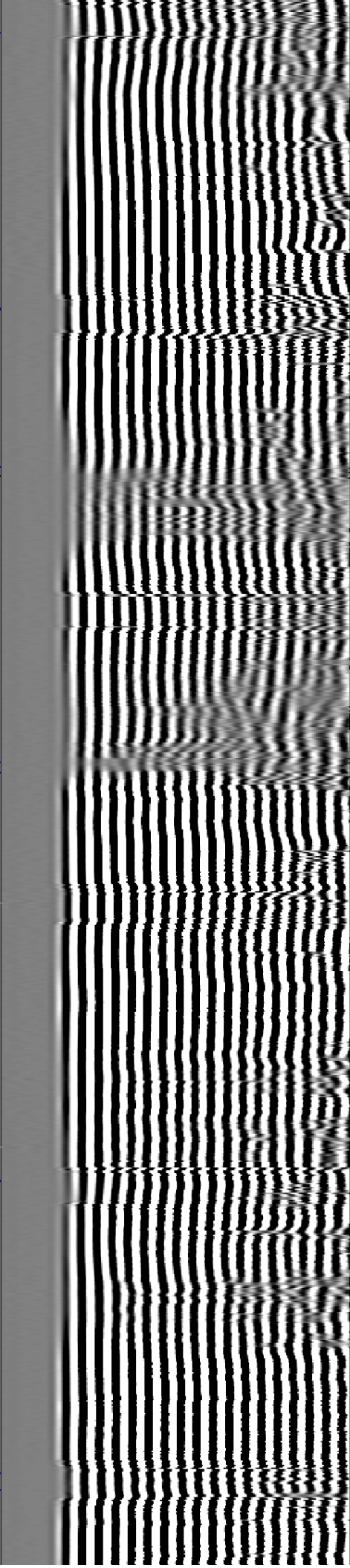
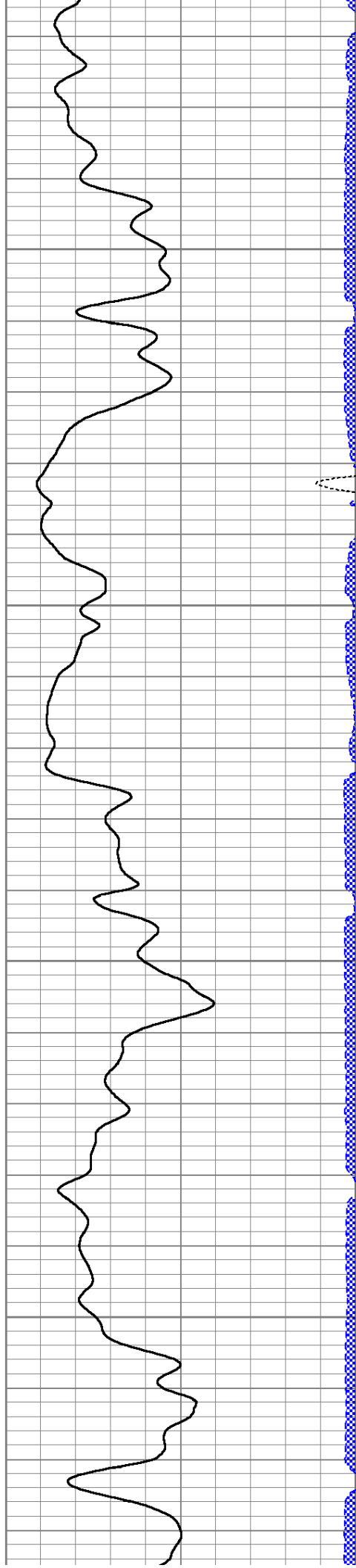


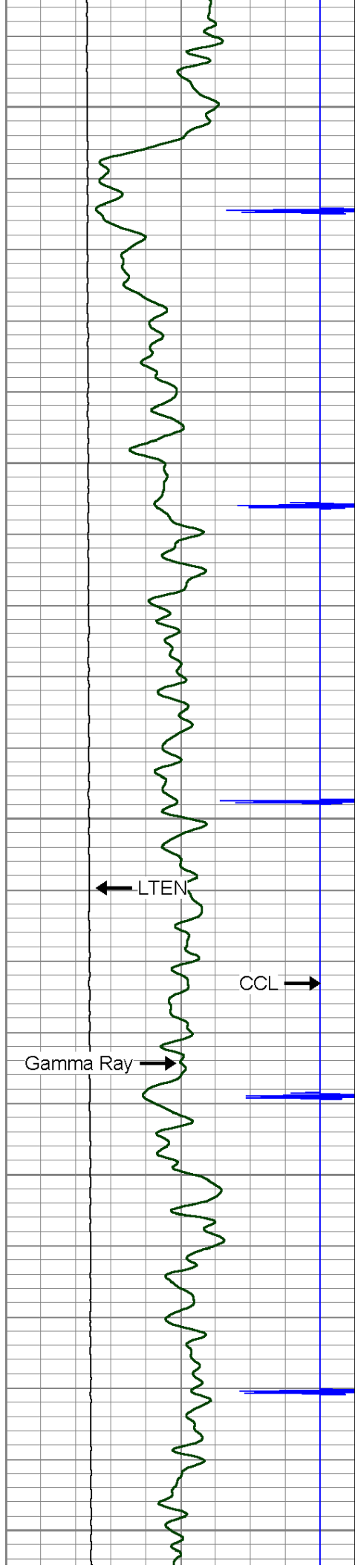
4650

4700

4750

4800





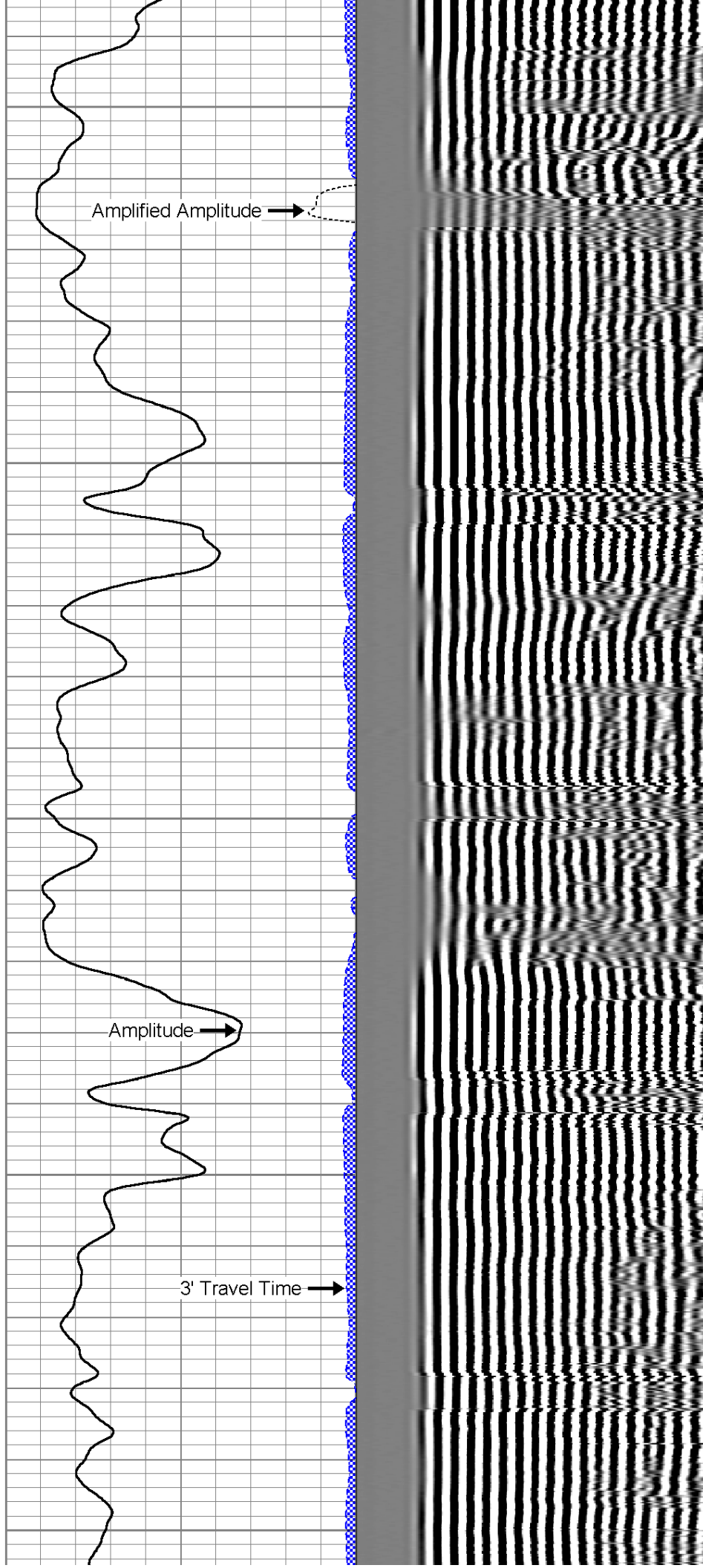
4850

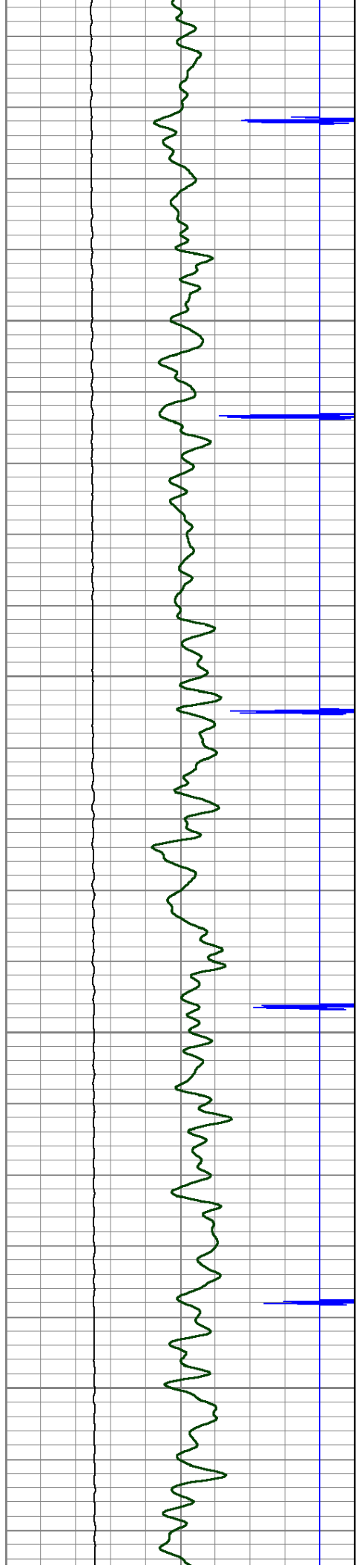
4900

4950

5000

5050



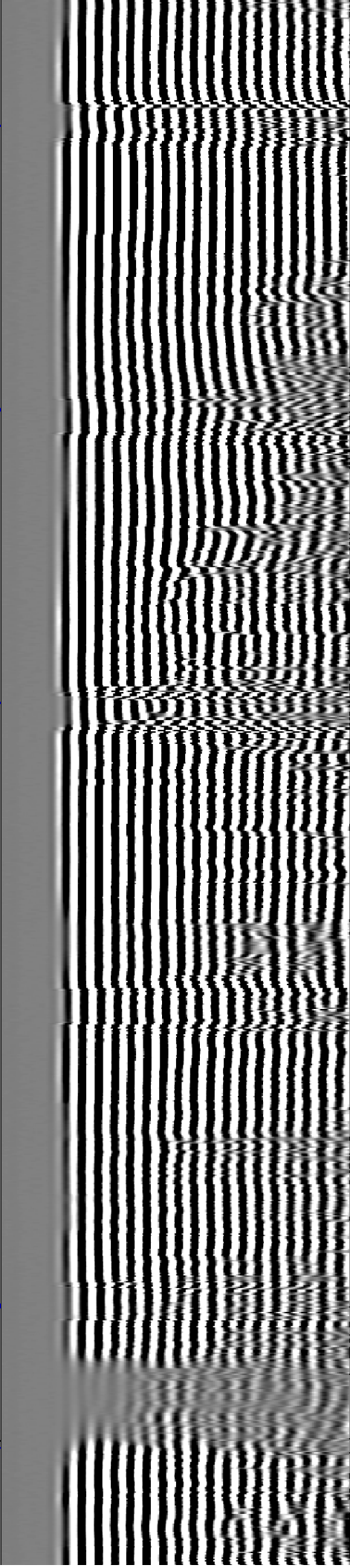
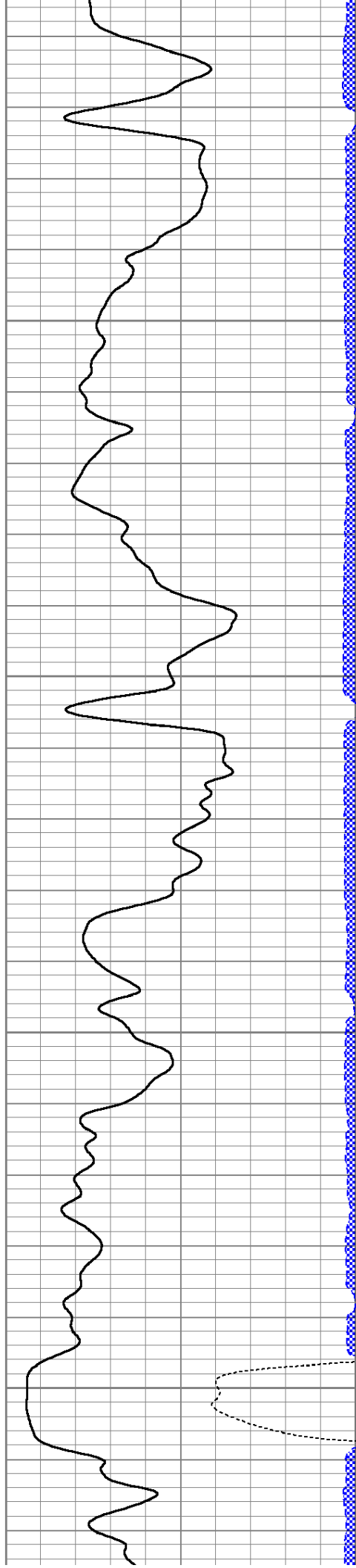


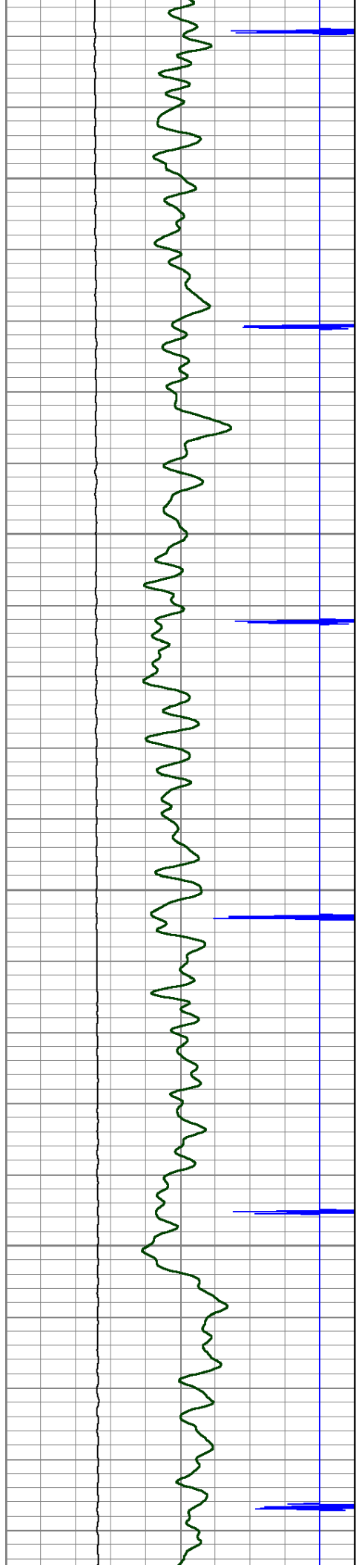
5100

5150

5200

5250



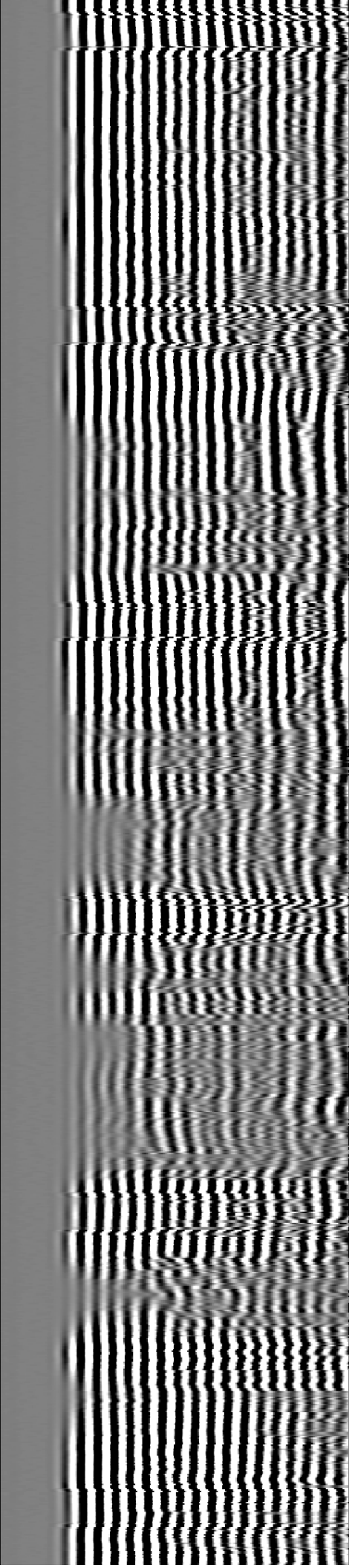
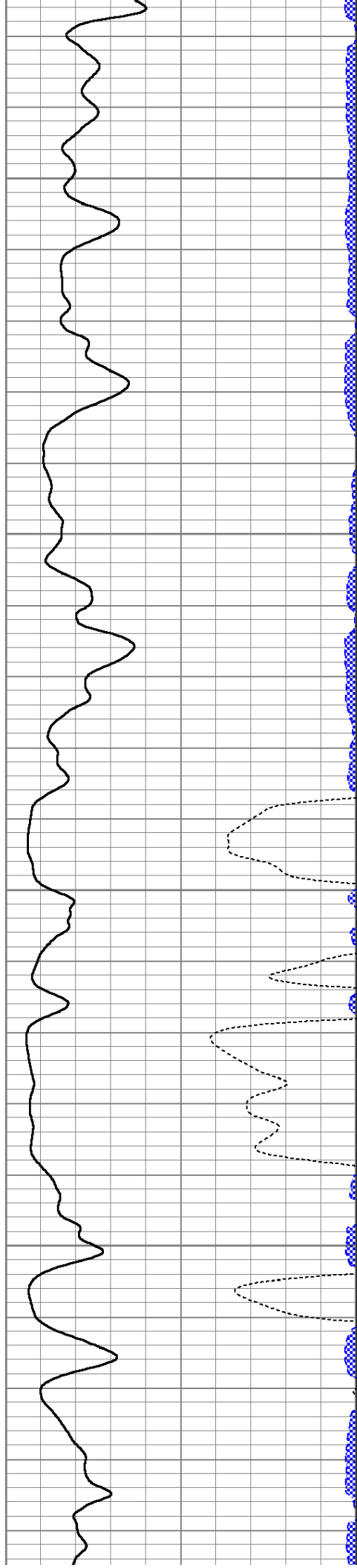


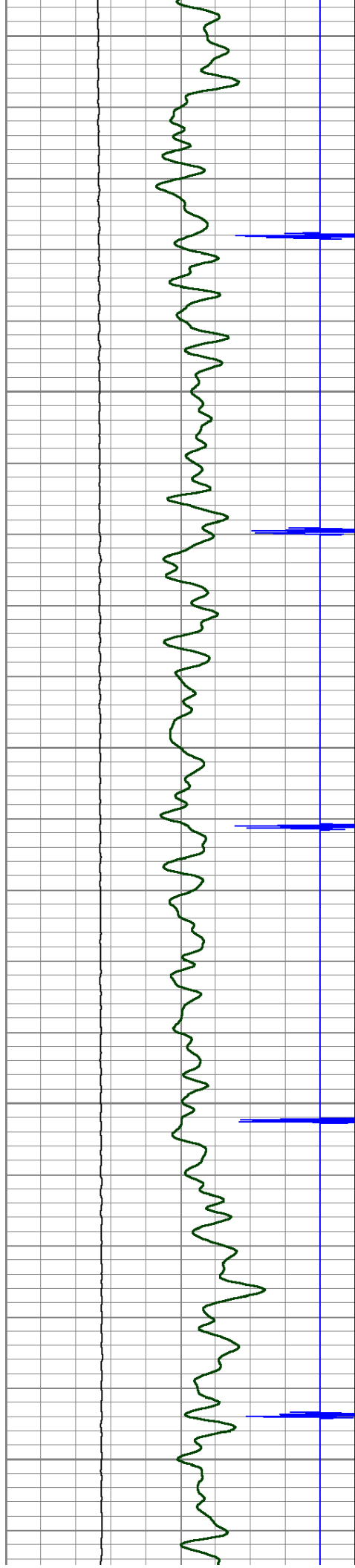
5300

5350

5400

5450





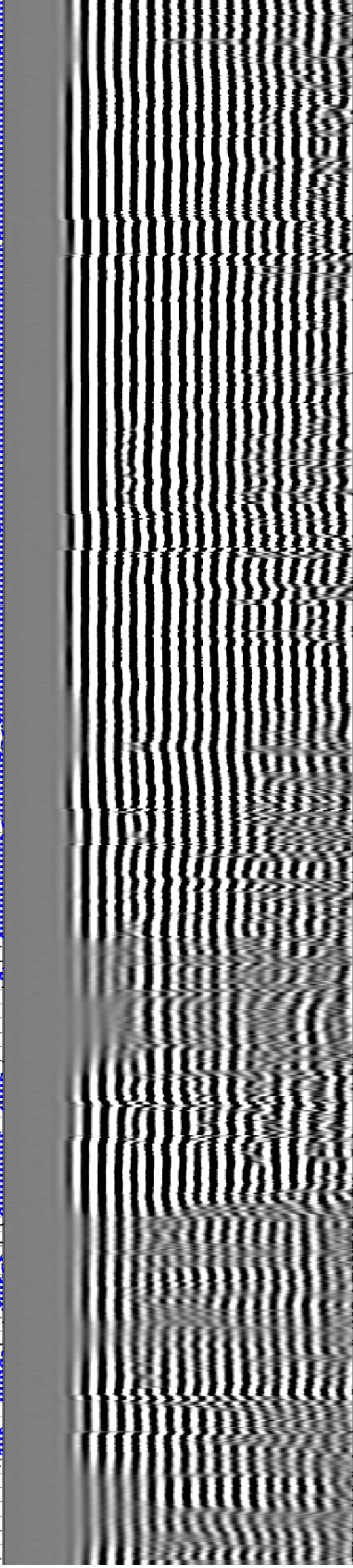
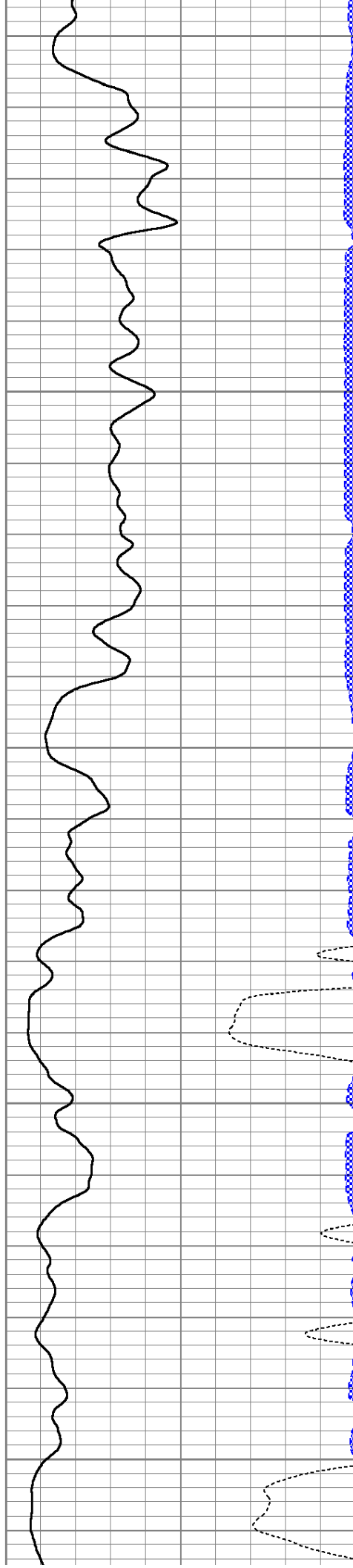
5500

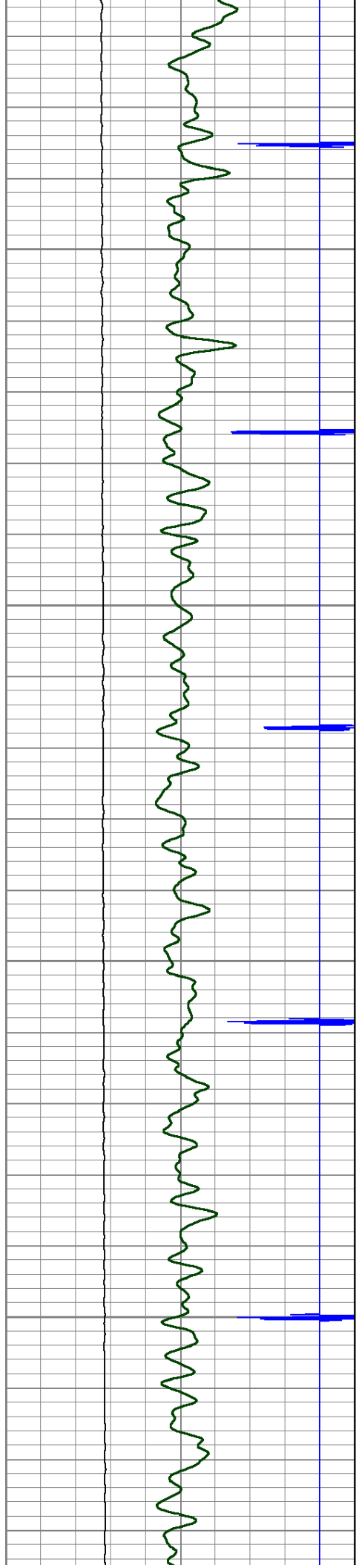
5550

5600

5650

5700



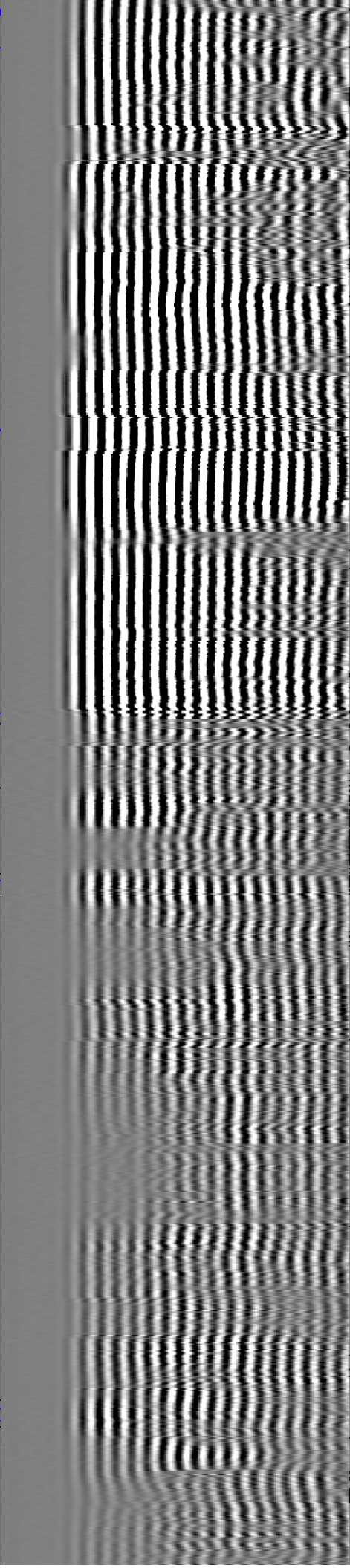
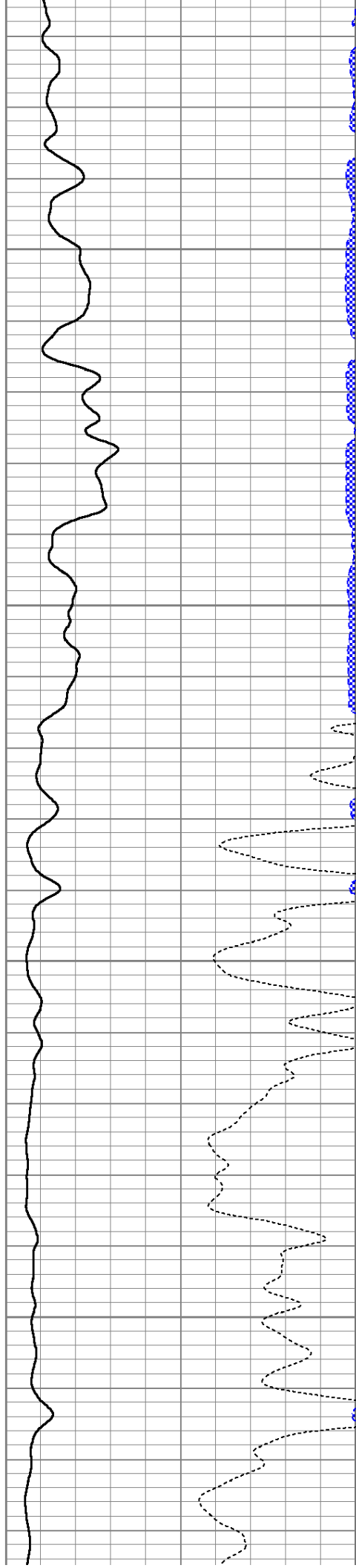


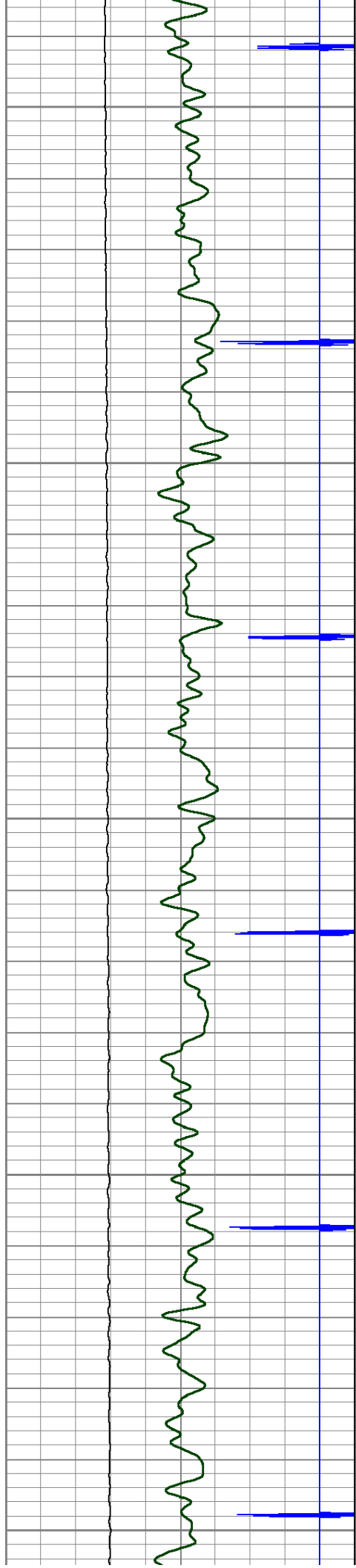
5750

5800

5850

5900





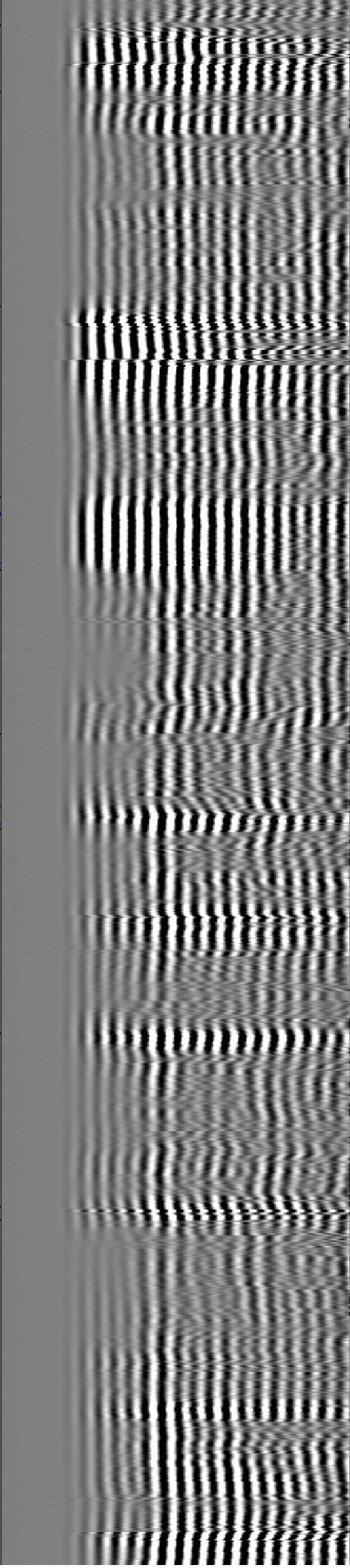
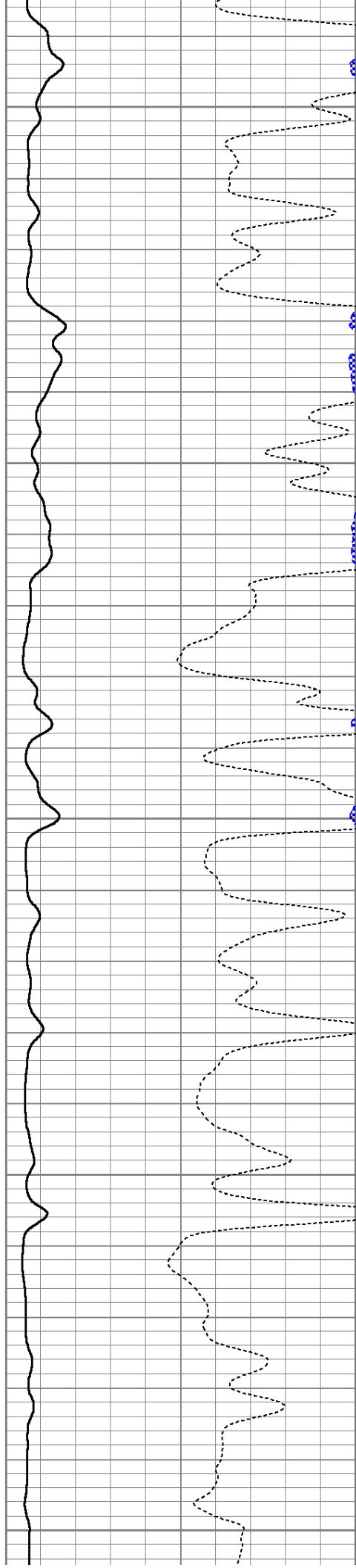
5950

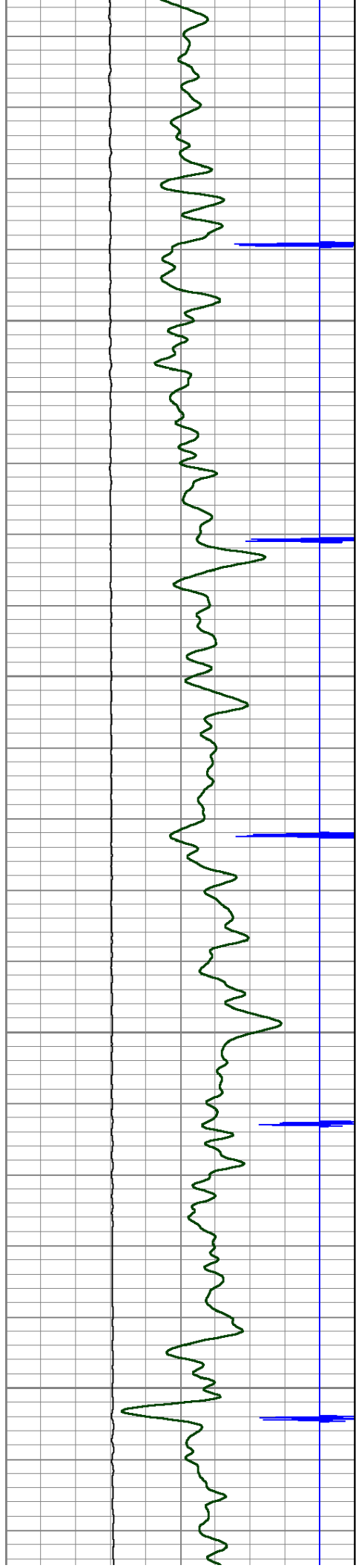
6000

6050

6100

6150



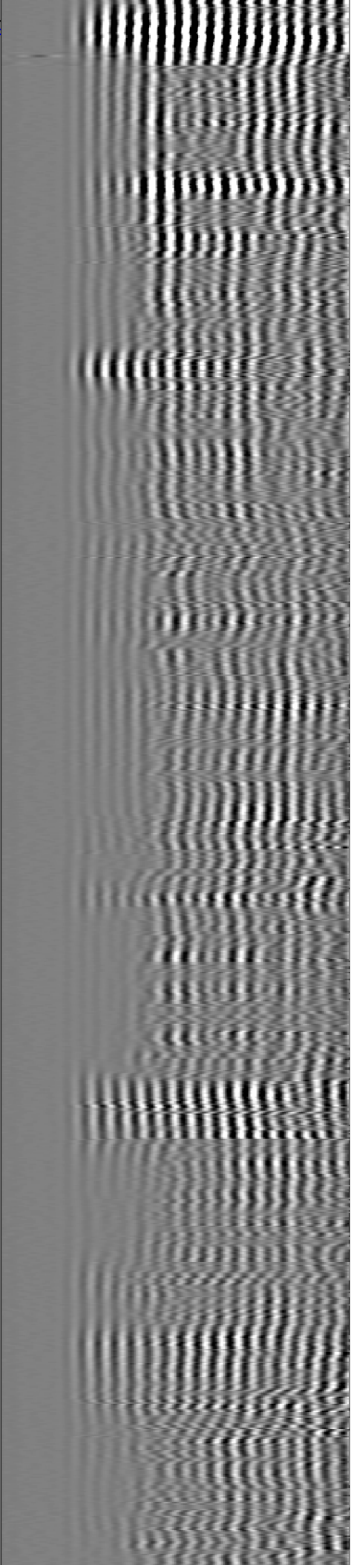
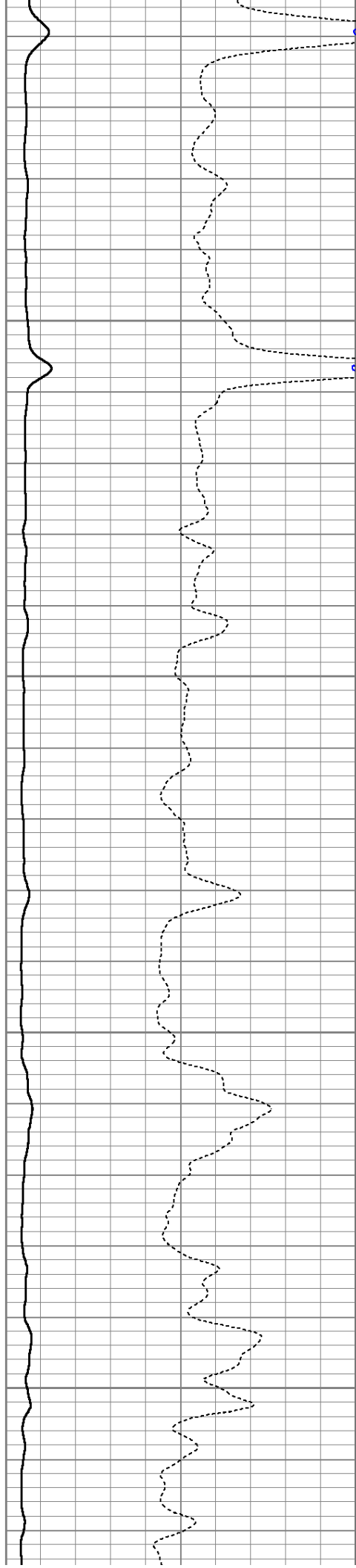


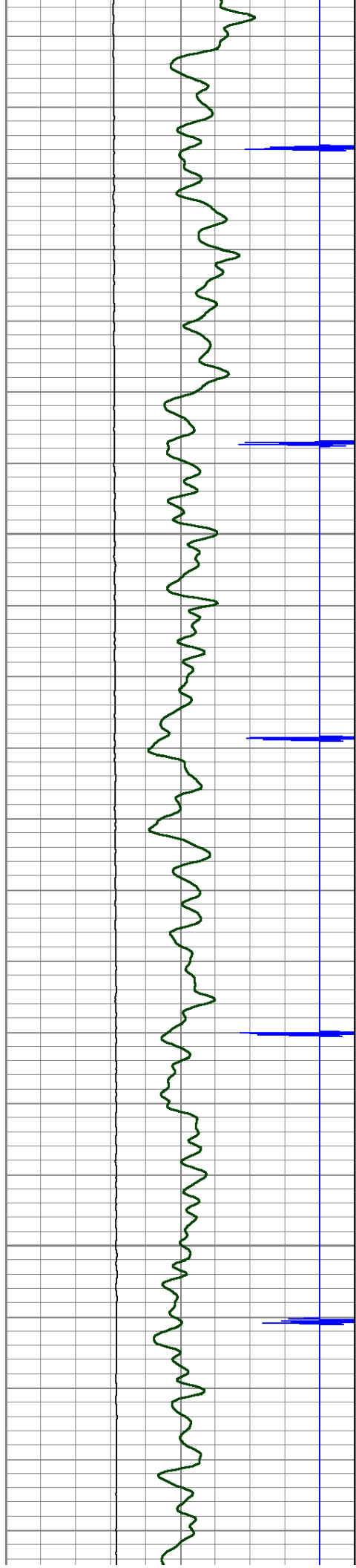
6200

6250

6300

6350



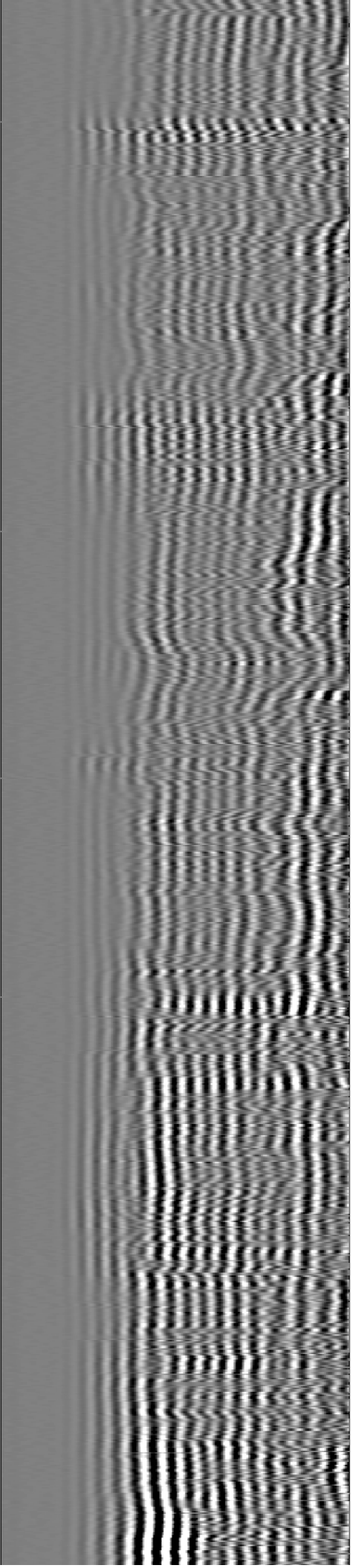
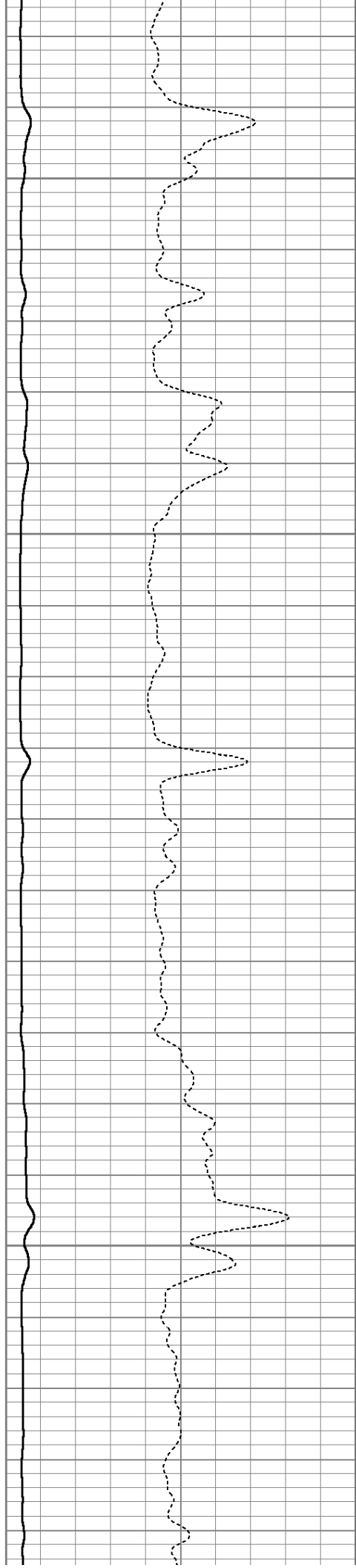


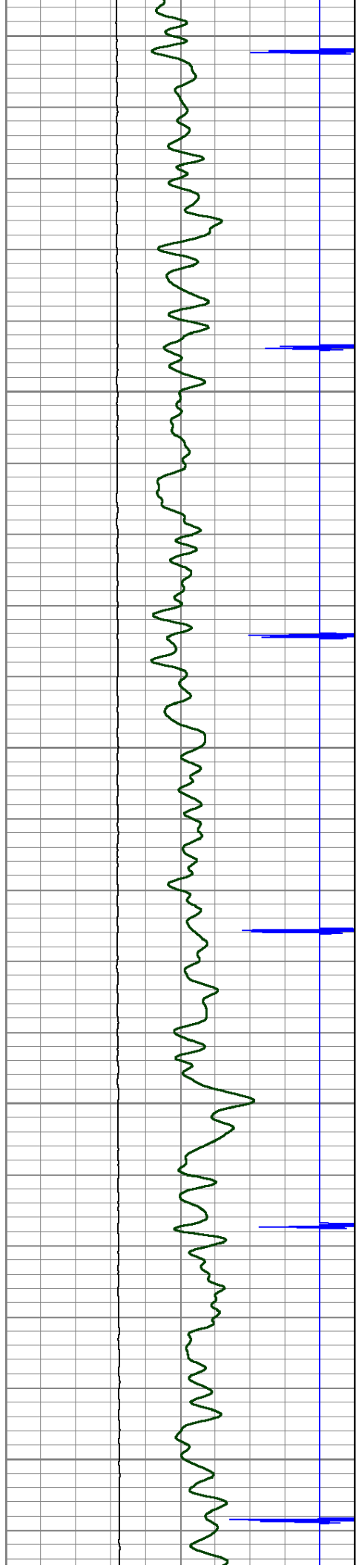
6400

6450

6500

6550





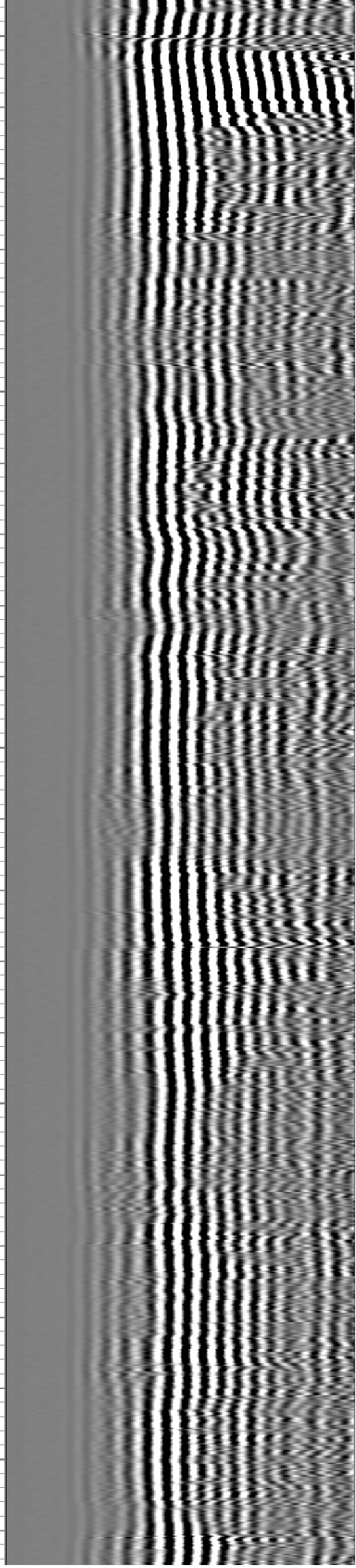
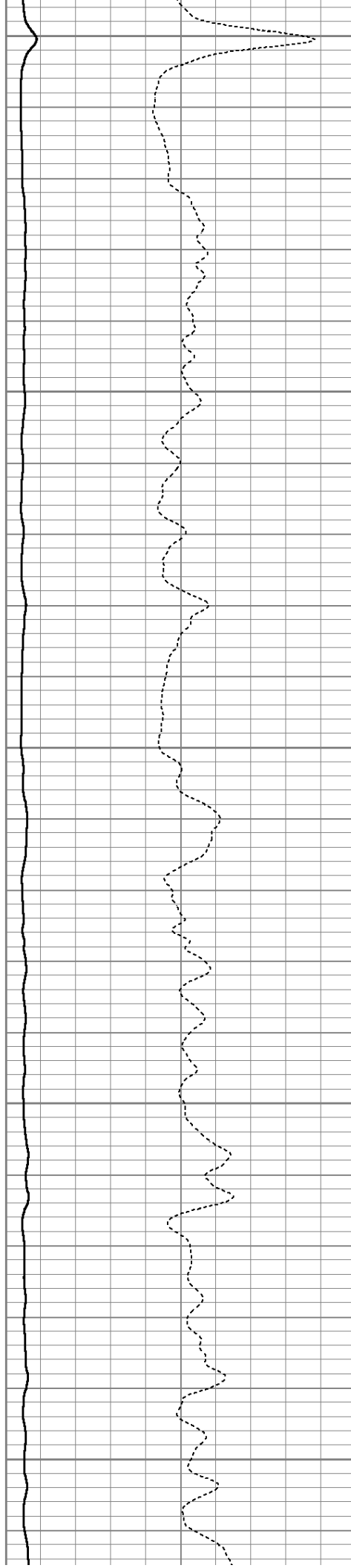
6600

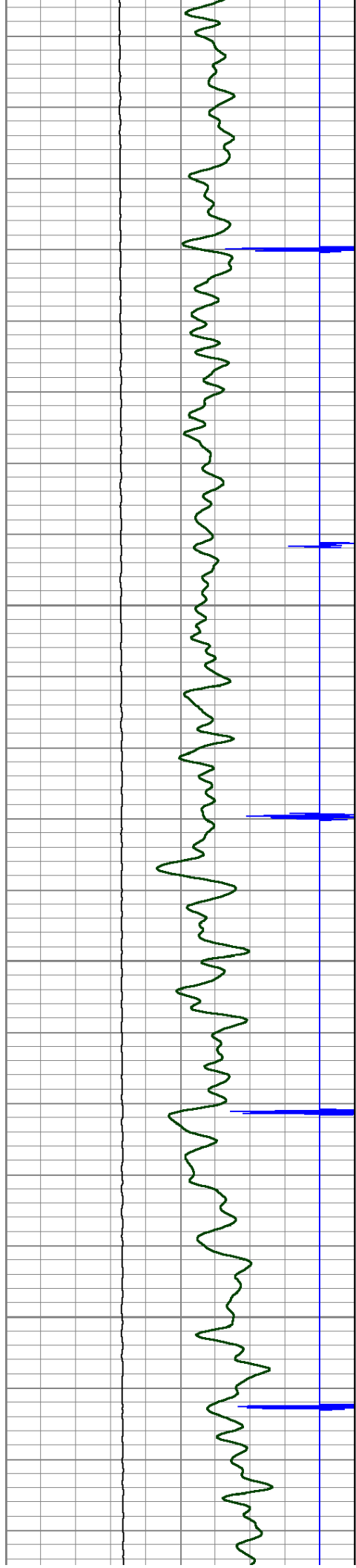
6650

6700

6750

6800



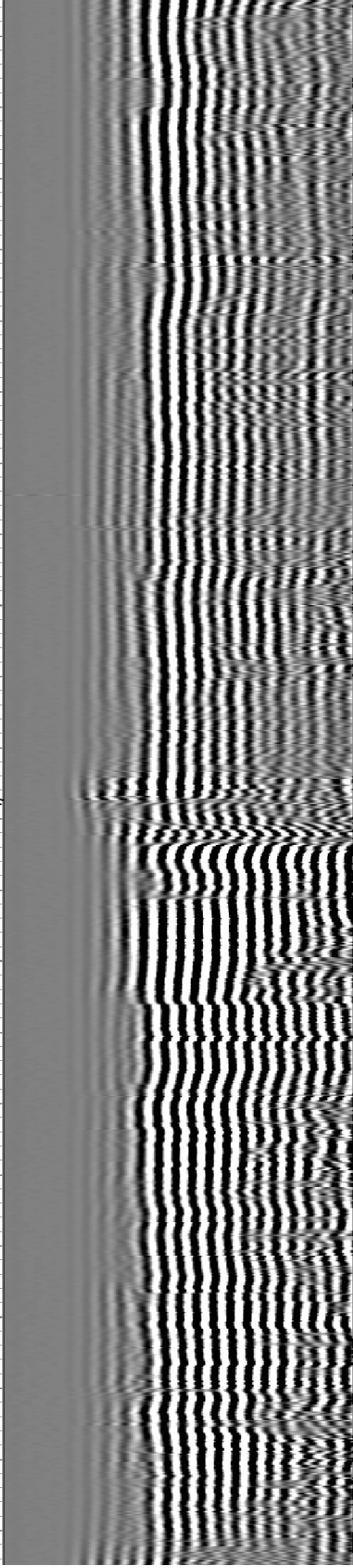
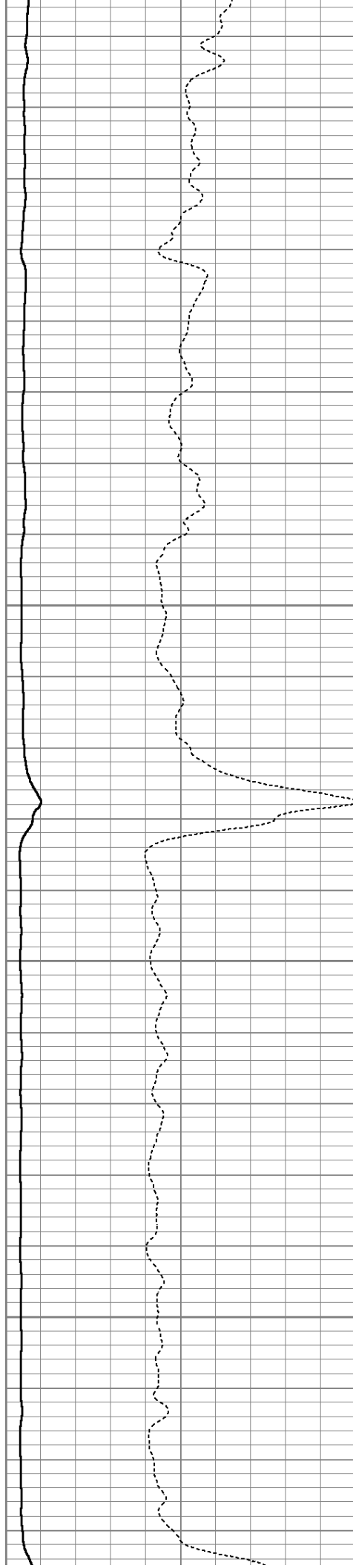


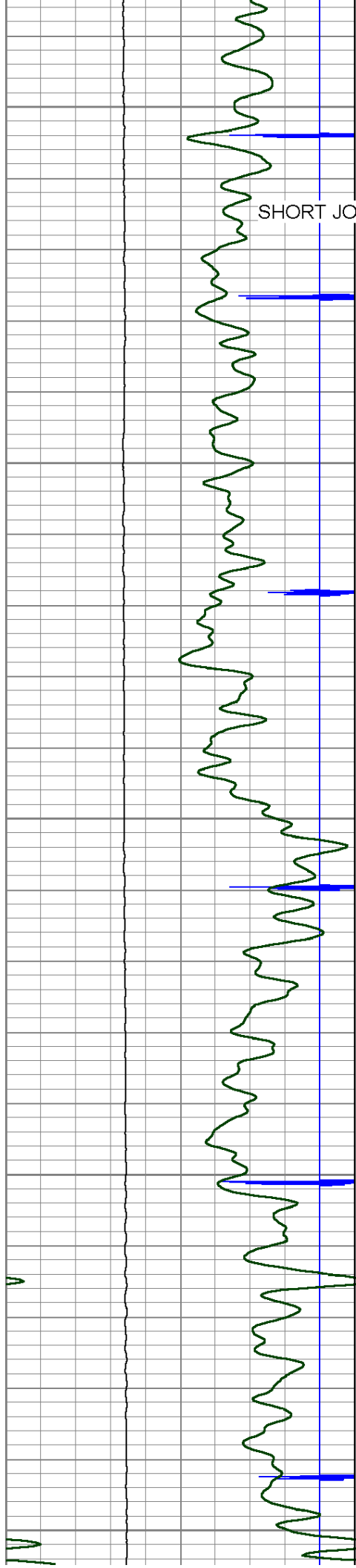
6850

6900

6950

7000





7050

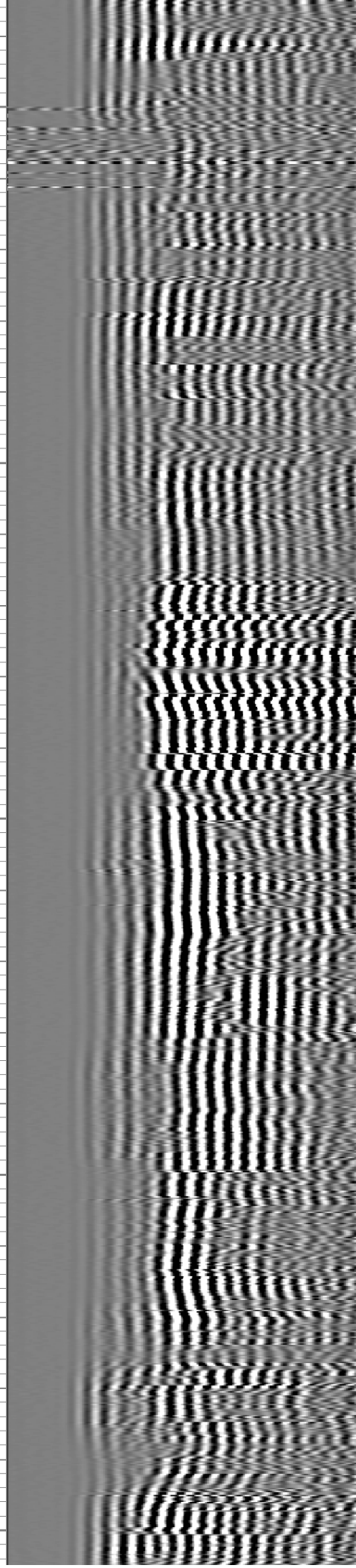
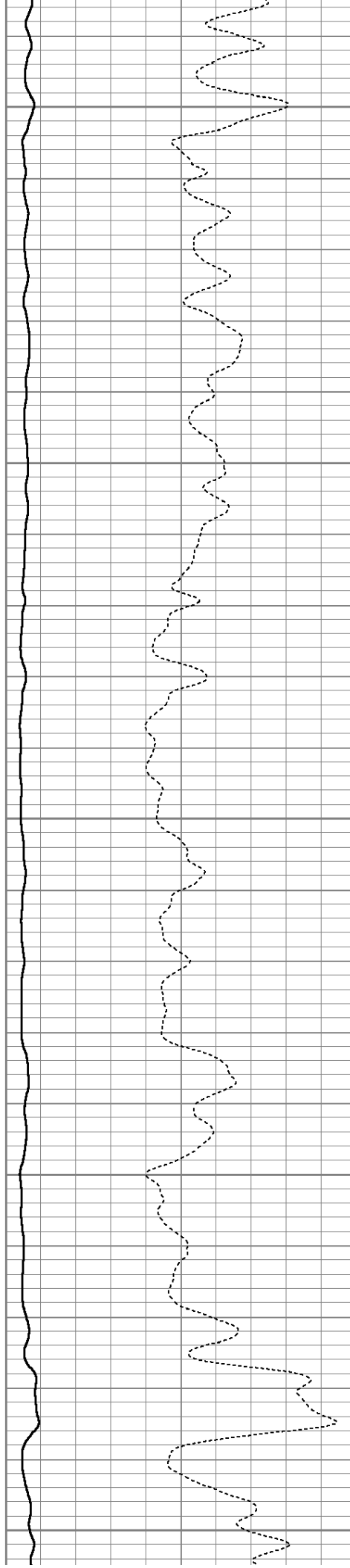
SHORT JOINT

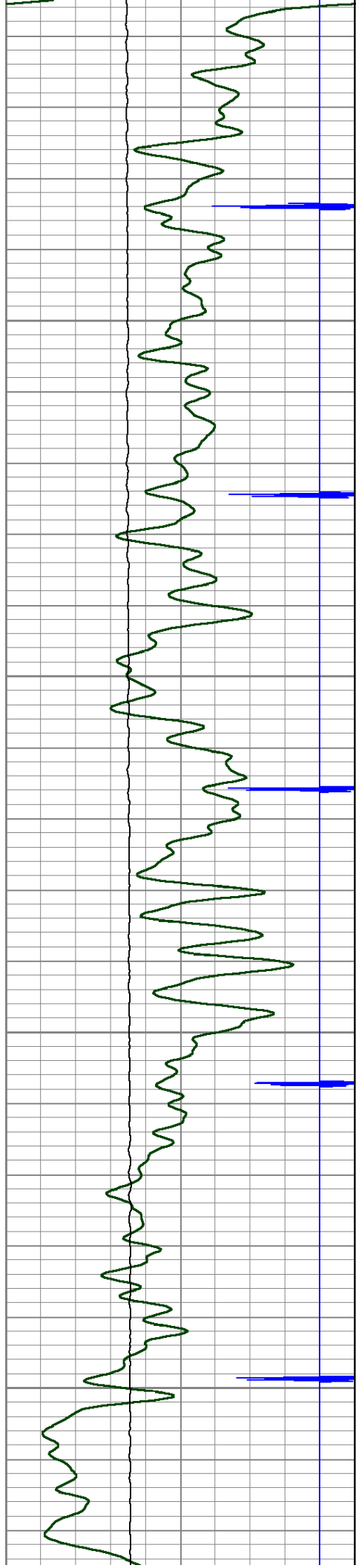
7100

7150

7200

7250



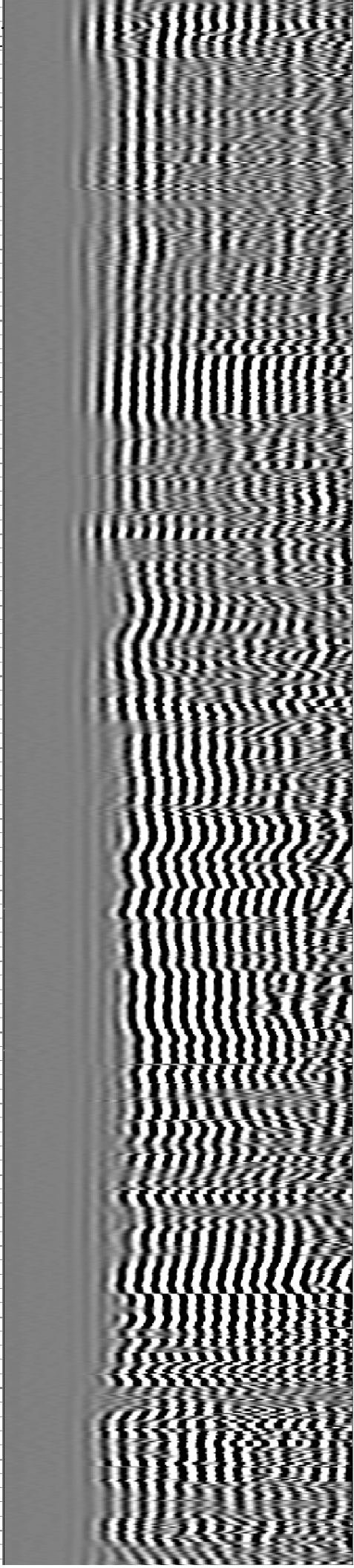
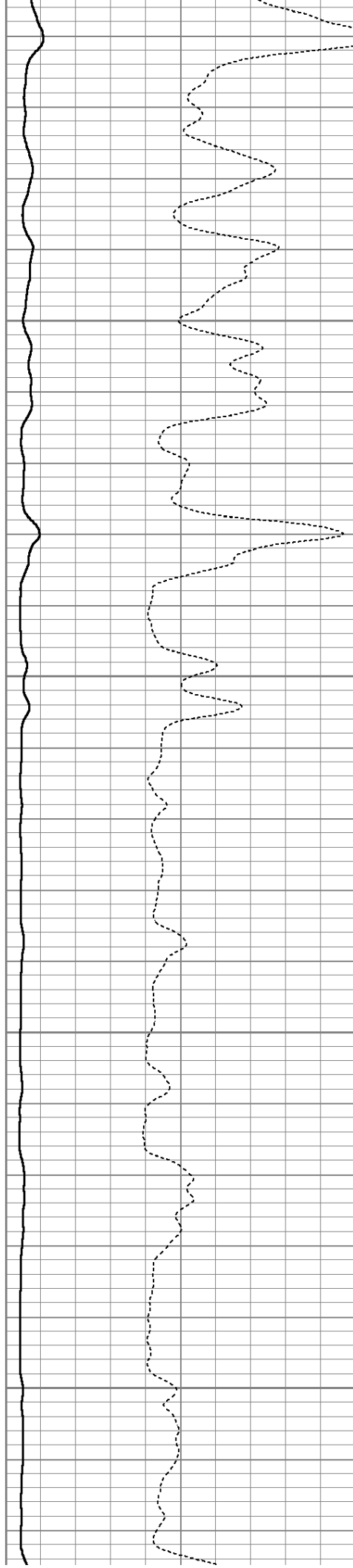


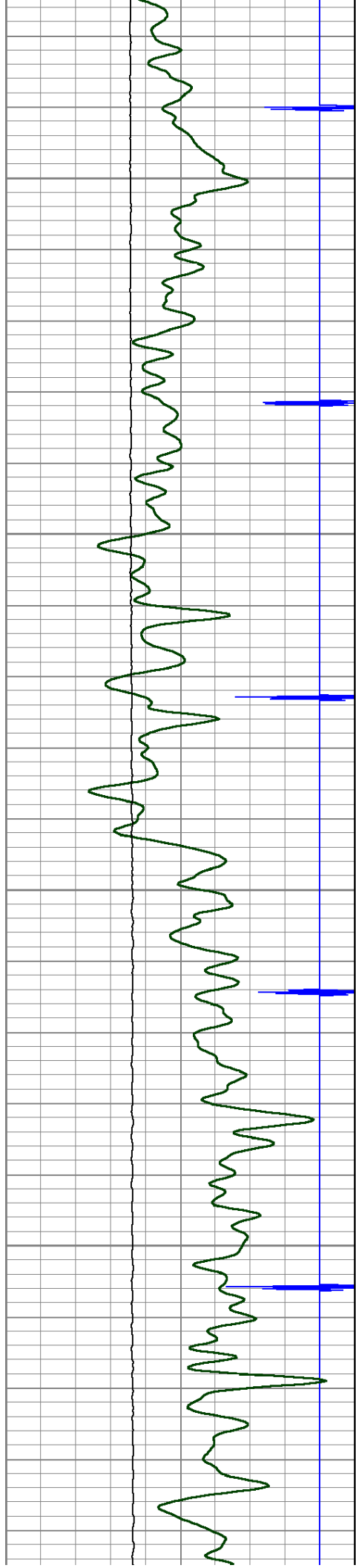
7300

7350

7400

7450



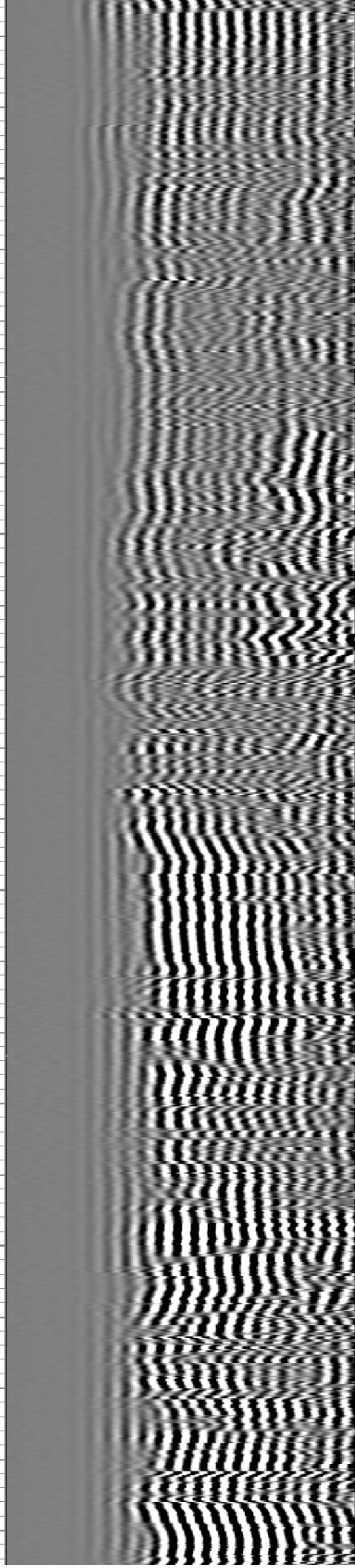
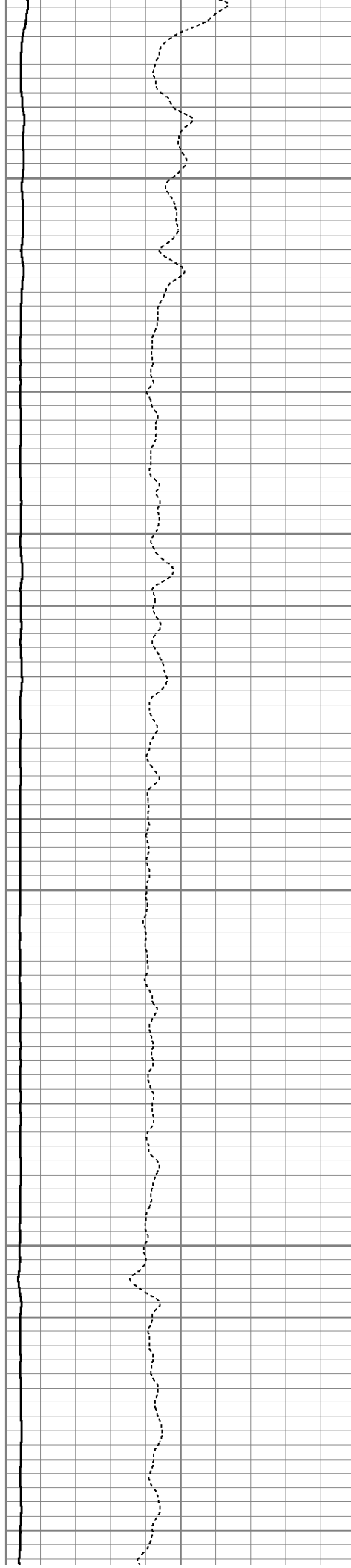


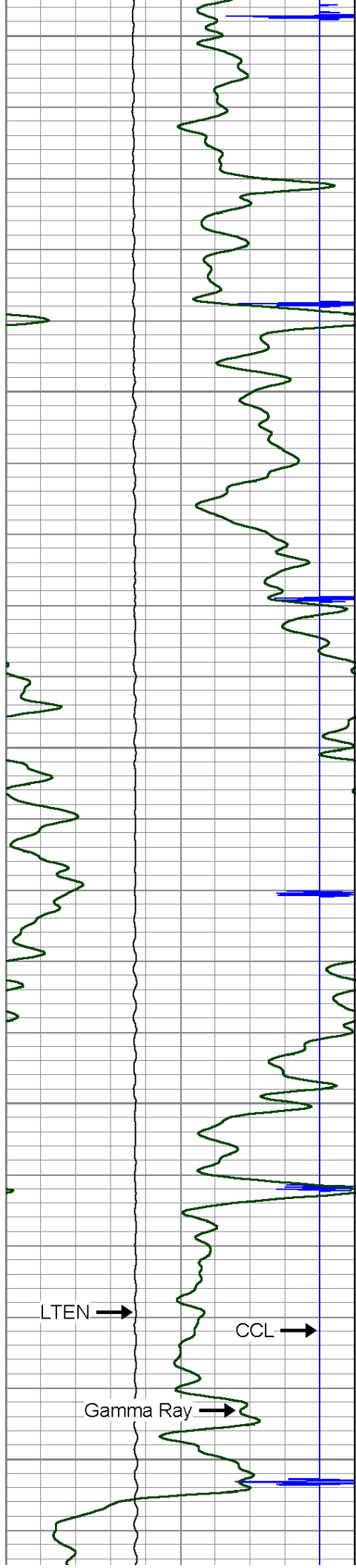
7500

7550

7600

7650





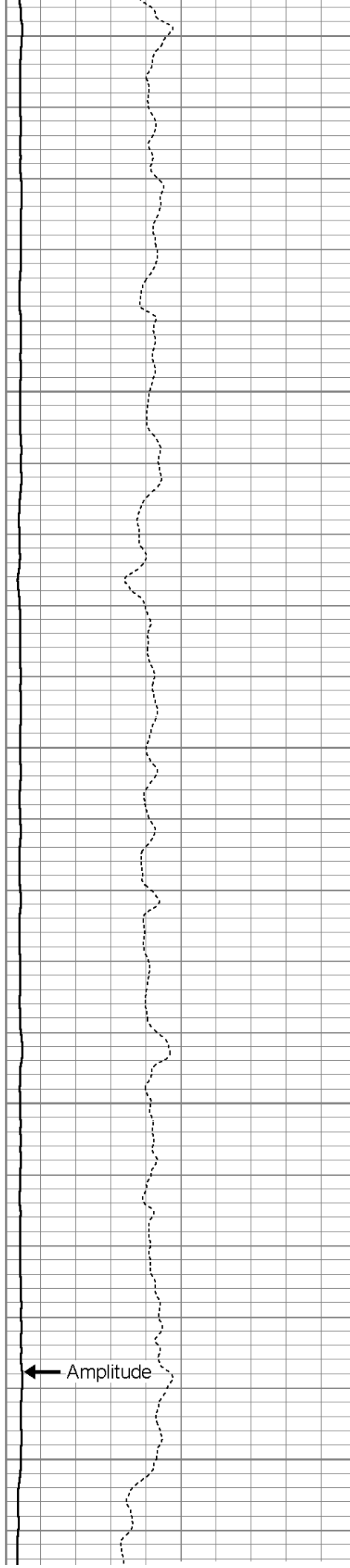
7700

7750

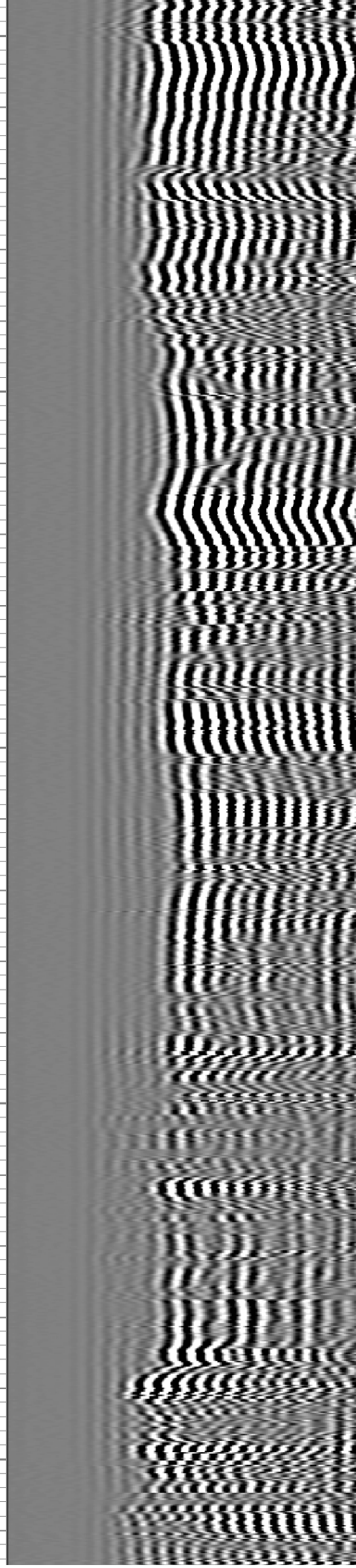
7800

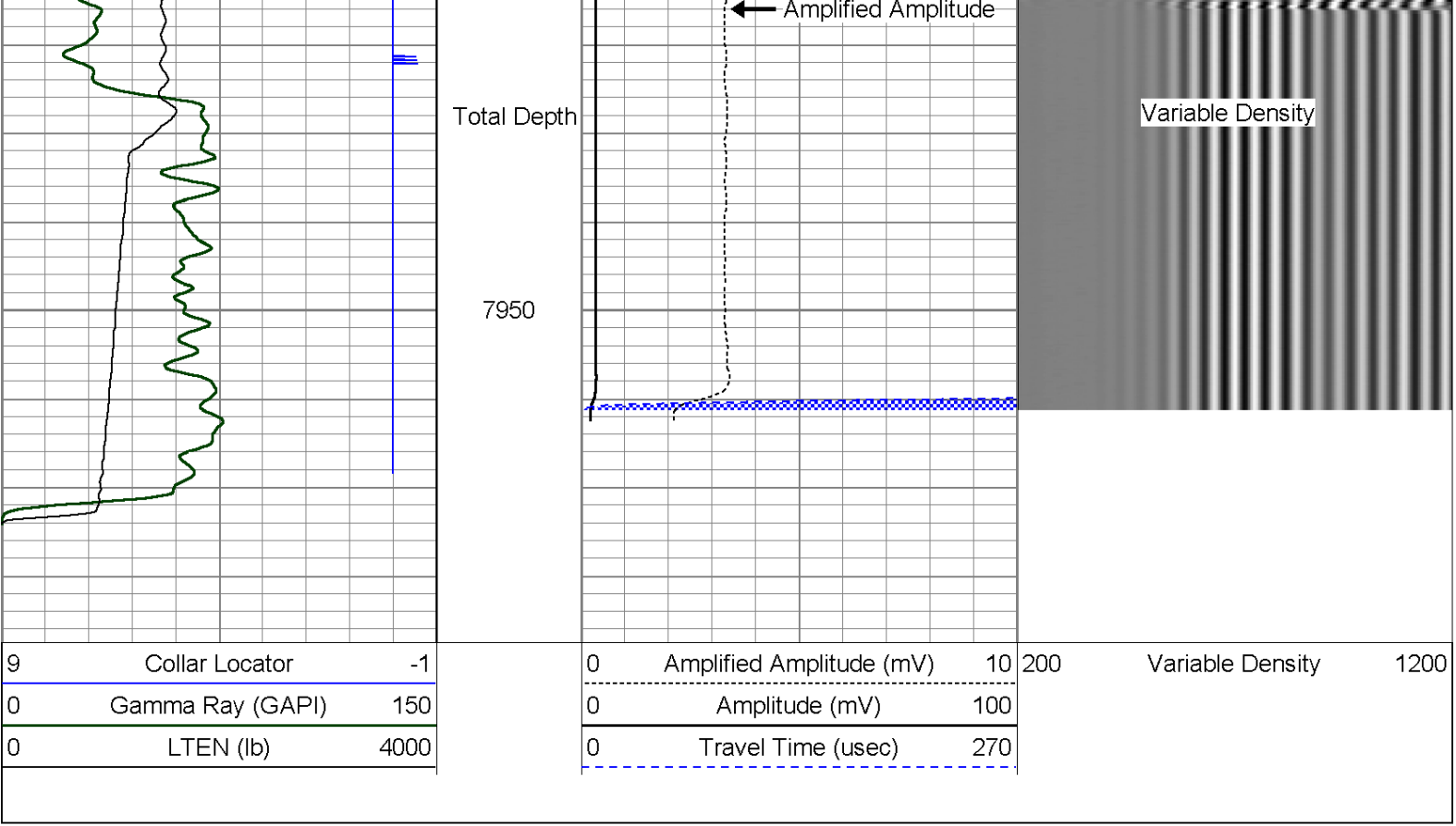
7850

7900



← Amplitude





Company ENCANA OIL & GAS INC. (USA)
Well WANDELL 6-0-7
Field WATTENBURG
County WELD
State COLORADO