

---

# **SAMSON RESOURCES CORP - EBUS**

---

**Southern Ute 33-8-28 #6A  
IGNACIO BLANCO  
La Plata County , Colorado**

**Squeeze Perfs**  
**25-May-2011**

**Job Site Documents**

## The Road to Excellence Starts with Safety

<b>Sold To #:</b> 345114		<b>Ship To #:</b> 2851589		<b>Quote #:</b>		<b>Sales Order #:</b> 8194974	
<b>Customer:</b> SAMSON RESOURCES CORP - EBUS				<b>Customer Rep:</b>			
<b>Well Name:</b> Southern Ute			<b>Well #:</b> 33-8-28 #6A			<b>API/UWI #:</b> 05067098430000	
<b>Field:</b> IGNACIO BLANCO		<b>City (SAP):</b> IGNACIO		<b>County/Parish:</b> La Plata		<b>State:</b> Colorado	
<b>Legal Description:</b> Section 28 Township 33N Range 8W							
<b>Contractor:</b> J&J			<b>Rig/Platform Name/Num:</b> J&J #3				
<b>Job Purpose:</b> Squeeze Perfs							
<b>Well Type:</b> Development Well				<b>Job Type:</b> Squeeze Perfs			
<b>Sales Person:</b> SNYDER, RANDALL				<b>Srvc Supervisor:</b> FEUERBORN, JOHN		<b>MBU ID Emp #:</b> 381677	
<b>Job Personnel</b>							
<b>HES Emp Name</b>	<b>Exp Hrs</b>	<b>Emp #</b>	<b>HES Emp Name</b>	<b>Exp Hrs</b>	<b>Emp #</b>	<b>HES Emp Name</b>	<b>Exp Hrs</b>
DOBBS, CHAD A		275043	FEUERBORN, JOHN William		381677	VANALSTYNE, TROY L	420256
<b>Equipment</b>							
<b>HES Unit #</b>	<b>Distance-1 way</b>	<b>HES Unit #</b>	<b>Distance-1 way</b>	<b>HES Unit #</b>	<b>Distance-1 way</b>	<b>HES Unit #</b>	<b>Distance-1 way</b>
10248065	50 mile	10951246	50 mile	11223557	50 mile		
<b>Job Hours</b>							
<b>Date</b>	<b>On Location Hours</b>	<b>Operating Hours</b>	<b>Date</b>	<b>On Location Hours</b>	<b>Operating Hours</b>	<b>Date</b>	<b>On Location Hours</b>
<b>TOTAL</b>		<i>Total is the sum of each column separately</i>					
<b>Job</b>				<b>Job Times</b>			
<b>Formation Name</b>				<b>Date</b>	<b>Time</b>	<b>Time Zone</b>	
<b>Formation Depth (MD)</b>	<b>Top</b>	<b>Bottom</b>		<b>Called Out</b>	23 - May - 2011	19:00	MST
<b>Form Type</b>	BHST			<b>On Location</b>	24 - May - 2011	10:00	MST
<b>Job depth MD</b>	1800. ft			<b>Job Started</b>	24 - May - 2011	11:27	MST
<b>Water Depth</b>				<b>Job Completed</b>	25 - May - 2011	09:47	MST
<b>Perforation Depth (MD)</b>	<b>From</b>	<b>To</b>		<b>Departed Loc</b>	0	11:00	MST
<b>Well Data</b>							
<b>Description</b>	<b>New / Used</b>	<b>Max pressure psig</b>	<b>Size in</b>	<b>ID in</b>	<b>Weight lbm/ft</b>	<b>Thread</b>	<b>Grade</b>
5-1/2" Production Casing	Unknown		5.5	4.892	17.		J-55
Tubing	Unknown		2.375	1.995	4.6		
<b>Sales/Rental/3<sup>rd</sup> Party (HES)</b>							
<b>Description</b>				<b>Qty</b>	<b>Qty uom</b>	<b>Depth</b>	<b>Supplier</b>
SUGAR - GRANULATED				70	LB		
<b>Tools and Accessories</b>							
<b>Type</b>	<b>Size</b>	<b>Qty</b>	<b>Make</b>	<b>Depth</b>	<b>Type</b>	<b>Size</b>	<b>Qty</b>
Guide Shoe					Packer		
Float Shoe					Bridge Plug		
Float Collar					Retainer		
Insert Float							
Stage Tool							
<b>Miscellaneous Materials</b>							
<b>Gelling Agt</b>		<b>Conc</b>		<b>Surfactant</b>		<b>Conc</b>	
<b>Treatment Fld</b>		<b>Conc</b>		<b>Inhibitor</b>		<b>Conc</b>	
						<b>Acid Type</b>	
						<b>Sand Type</b>	
						<b>Qty</b>	
						<b>Conc</b>	<b>%</b>
						<b>Size</b>	<b>Qty</b>

Fluid Data										
Stage/Plug #: 1										
Fluid #	Stage Type	Fluid Name	Qty	Qty uom	Mixing Density lbm/gal	Yield ft <sup>3</sup> /sk	Mix Fluid Gal/sk	Rate bbl/min	Total Mix Fluid Gal/sk	
1	Cement	CMT - PREMIUM - CLASS G, 94 LB SK (100003685)		sacks	15.8	1.15	4.99		4.99	
94 lbm		CMT - PREMIUM - CLASS G REG OR TYPE V, BULK (100003685)								
4.989 Gal		FRESH WATER								
Calculated Values		Pressures		Volumes						
Displacement		Shut In: Instant		Lost Returns		Cement Slurry		Pad		
Top Of Cement		5 Min		Cement Returns		Actual Displacement		Treatment		
Frac Gradient		15 Min		Spacers		Load and Breakdown		Total Job		
Rates										
Circulating		Mixing		Displacement		Avg. Job				
Cement Left In Pipe	Amount	42 ft	Reason	Shoe Joint						
Frac Ring # 1 @	ID		Frac ring # 2 @	ID		Frac Ring # 3 @	ID		Frac Ring # 4 @	ID
The Information Stated Herein Is Correct				Customer Representative Signature						

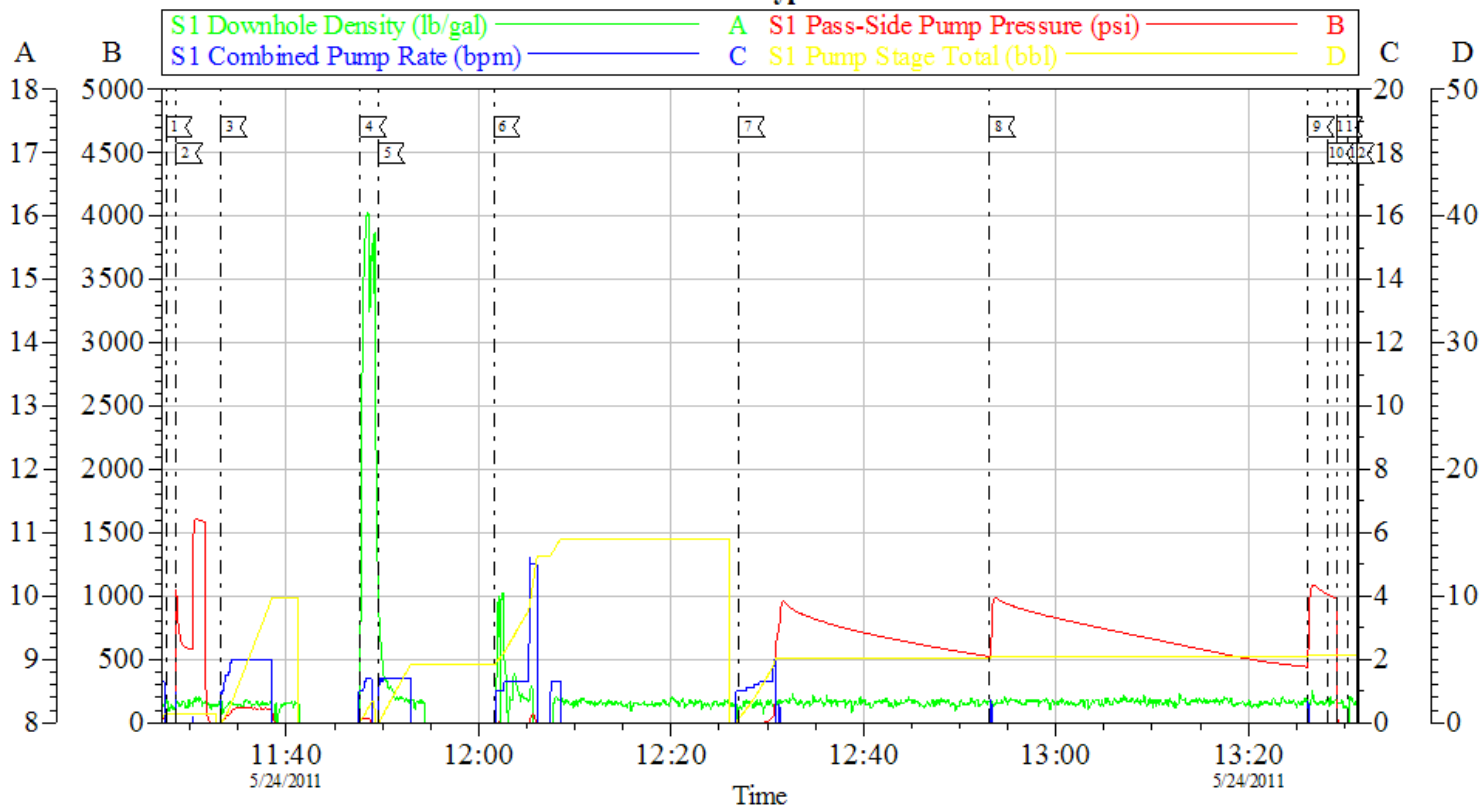
*The Road to Excellence Starts with Safety*

<b>Sold To #:</b> 345114	<b>Ship To #:</b> 2851589	<b>Quote #:</b>	<b>Sales Order #:</b> 8194974
<b>Customer:</b> SAMSON RESOURCES CORP - EBUS		<b>Customer Rep:</b>	
<b>Well Name:</b> Southern Ute	<b>Well #:</b> 33-8-28 #6A	<b>API/UWI #:</b> 05067098430000	
<b>Field:</b> IGNACIO BLANCO	<b>City (SAP):</b> IGNACIO	<b>County/Parish:</b> La Plata	<b>State:</b> Colorado
<b>Legal Description:</b> Section 28 Township 33N Range 8W			
<b>Lat:</b> N 0 deg. OR N 0 deg. 0 min. 0 secs.		<b>Long:</b> E 0 deg. OR E 0 deg. 0 min. 0 secs.	
<b>Contractor:</b> J&J		<b>Rig/Platform Name/Num:</b> J&J #3	
<b>Job Purpose:</b> Squeeze Perfs			<b>Ticket Amount:</b>
<b>Well Type:</b> Development Well		<b>Job Type:</b> Squeeze Perfs	
<b>Sales Person:</b> SNYDER, RANDALL		<b>Srv Supervisor:</b> FEUERBORN, JOHN	<b>MBU ID Emp #:</b> 381677

Activity Description	Date/Time	Cht #	Rate bbl/min	Volume bbl		Pressure psig		Comments
				Stage	Total	Tubing	Casing	
Call Out	05/24/2011 07:00							
Crew Leave Yard	05/24/2011 08:30							
Arrive At Loc	05/24/2011 09:45							
Assessment Of Location Safety Meeting	05/24/2011 10:00							
Rig-Up Equipment	05/24/2011 10:20							
Safety Huddle	05/24/2011 11:20							
Start Job	05/24/2011 11:25							
Pressure Test	05/24/2011 11:27						.0	LOW TEST AT 600 HIGH TEST AT 1600psi ON TRUCK AND LINES
Circulate Well	05/24/2011 11:33		2	10			115.0	7bbbls TO CIR TUBING
Shutdown	05/24/2011 11:39							SET A 112' BALANCED PLUG AT 1812' PERFS SET AT 1800' RIG HAD NO CIRCULATION THROUGH PERFS
Pump Tail Cement	05/24/2011 11:47		2	2.5			.0	15.8ppg 1.15y 5.0wr 13sks CEMENT
Pump Displacement	05/24/2011 11:49		2	6.5				PLUG BALANCED
Shutdown	05/24/2011 11:53							WASHED TRUCK WHILE RIG PULLED OUT OF HOLE
Stage Cement	05/24/2011 12:26		2	5			970.0	
Stage Cement	05/24/2011 12:53		0.1	0.1			985.0	

Activity Description	Date/Time	Cht #	Rate bbl/ min	Volume bbl		Pressure psig		Comments
				Stage	Total	Tubing	Casing	
Start Job	05/25/2011 08:47							
Pressure Test	05/25/2011 08:48							650psi LOW TEST 1550psi HIGH TEST ON TRUCK AND LINES
Pump Spacer 1	05/25/2011 08:52		2.5	20			100.0	MUD FLUSH
Pump Spacer 2	05/25/2011 09:02		2.5	5			110.0	H2O
Pump Tail Cement	05/25/2011 09:05		2.5	38			115.0	187sks PUMPED AT 15.8ppg 1.15y 5.0wr 19bbls TO SURFACE
Drop Plug	05/25/2011 09:21							
Pump Displacement	05/25/2011 09:31		2.5	12.7			200.0	H2O
Stage Cement	05/25/2011 09:41		0.1	0.5			950.0	TRY TO PUSH LITTLE SOUTH OF PERFS
End Job	05/25/2011 09:47							HAVE CEMENT FROM 620' TO SURFACE

### Customer Job Type



#### Local Event Log

1 START JOB	11:27:31	2 TEST LINES	11:28:36	3 CIR TUBING	11:33:13
4 PUMP CEMENT	11:47:43	5 PUMP DISPLACMENT	11:49:34	6 WASH PUMP	12:01:35
7 STAGE CEMENT	12:27:02	8 STAGE CEMENT	12:53:05	9 STAGE CEMENT	13:26:13
10 SHUT IN WELL 1000psi ON IT	13:28:13	11 RELEASE PRESSURE	13:29:09	12 RELEASED CREW FOR DAY	13:30:23

Customer: SAMSON	Job Date: 24-May-2011	Sales Order #: 8194974
Well Description: S UTE 33-8-28 #6A	Job Type: SQUEEZE	ADC Used: YES
Company Rep: D KUKENDALL	Cement Supervisor: JOHN FEUERBORN	Elite #: OLD TIGER CHAD DOBBS

OptiCem v6.4.0  
24-May-11 13:41