

### The Road to Excellence Starts with Safety

The Road to Excellence Starts with Safety			
Sold To #: 345114	Ship To #: 345114	Quote #:	Sales Order #: 8141379
Customer: SAMSON RESOURCES CORP - EBUS		Customer Rep:	
Well Name: Southern Ute		Well #: 33-8-28 #6A	API/UWI #: 05067098430000
Field: IGNACIO BLANCO	City (SAP): TULSA	County/Parish: La Plata	State: Colorado
Legal Description: Section 28 Township 33N Range 8W			
Contractor: AZTEC WELL SERVICE		Rig/Platform Name/Num: AWS 507	
Job Purpose: Cement Surface Casing			
Well Type: Development Well		Job Type: Cement Surface Casing	
Sales Person: SCOTT, KYLE		Srvc Supervisor: ARNOLD, EDWARD	MBU ID Emp #: 439784

### Job Personnel

HES Emp Name	Exp Hrs	Emp #	HES Emp Name	Exp Hrs	Emp #	HES Emp Name	Exp Hrs	Emp #
ARNOLD, EDWARD John	9.5	439784	AXT, STEPHEN Gary	9.5	434802	BEGAY, LYDELL James	9.5	479804
ROSS, CHARLES Raymond	9.5	453128	TYLER, LUTHER	9.5	375283			

### Equipment

HES Unit #	Distance-1 way	HES Unit #	Distance-1 way	HES Unit #	Distance-1 way	HES Unit #	Distance-1 way
10025039	45 mile	10248068	45 mile	10724579	45 mile	10871245	45 mile
11360881	45 mile						

### Job Hours

Date	On Location Hours	Operating Hours	Date	On Location Hours	Operating Hours	Date	On Location Hours	Operating Hours
4.30.2011	9.5	3						

TOTAL	Total is the sum of each column separately							
-------	--	--	--	--	--	--	--	--

### Job

Formation Name					Date	Time	Time Zone
Formation Depth (MD)	Top		Bottom		Called Out	30 - Apr - 2011	11:00 MST
Form Type	BHST				On Location	30 - Apr - 2011	13:30 MST
Job depth MD	583. ft		Job Depth TVD	583. ft	Job Started	30 - Apr - 2011	20:10 MST
Water Depth			Wk Ht Above Floor	3. ft	Job Completed	30 - Apr - 2011	21:34 MST
Perforation Depth (MD)	From		To		Departed Loc	30 - Apr - 2011	23:00 MST

### Well Data

Description	New / Used	Max pressure psig	Size in	ID in	Weight lbm/ft	Thread	Grade	Top MD ft	Bottom MD ft	Top TVD ft	Bottom TVD ft
12-1/4" Surface Open Hole				12.25				.	583.		
8-5/8" Surface Casing	Unknown		8.625	8.097	24.		J-55	.	573.9		

### Sales/Rental/3<sup>rd</sup> Party (HES)

Description	Qty	Qty uom	Depth	Supplier
PLUG,CMTG,TOP,8 5/8,HWE,7.20 MIN/8.09 MA	1	EA		
SUGAR, GRANULATED, IMPERIAL	100	LB		

### Tools and Accessories

Type	Size	Qty	Make	Depth	Type	Size	Qty	Make	Depth	Type	Size	Qty	Make
Guide Shoe					Packer					Top Plug	8.625	1	HES
Float Shoe					Bridge Plug					Bottom Plug			
Float Collar					Retainer					SSR plug set			
Insert Float										Plug Container	8.625	1	HES
Stage Tool										Centralizers			

### Miscellaneous Materials

Gelling Agt	Conc	Surfactant	Conc	Acid Type	Qty	Conc	%
Treatment Fld	Conc	Inhibitor	Conc	Sand Type	Size	Qty	

Fluid Data									
Stage/Plug #: 1									
Fluid #	Stage Type	Fluid Name	Qty	Qty uom	Mixing Density lbm/gal	Yield ft <sup>3</sup> /sk	Mix Fluid Gal/sk	Rate bbl/min	Total Mix Fluid Gal/sk
1	Water Spacer		0.00	bbl	8.33	.0	.0	4	
2	Surface Cement	CMT - PREMIUM - CLASS G, 94 LB SK (100003685)	405.0	sacks	15.8	1.17	5.0	3	5.0
	94 lbm	CMT - PREMIUM - CLASS G REG OR TYPE V, BULK (100003685)							
	2 %	CALCIUM CHLORIDE - HI TEST PELLET (100005053)							
	0.125 lbm	POLY-E-FLAKE (101216940)							
	4.998 Gal	FRESH WATER							
3	Displacement		0.00	bbl	8.33	.0	.0	3	
Calculated Values		Pressures		Volumes					
Displacement	33.3	Shut In: Instant		Lost Returns	0	Cement Slurry	89.3	Pad	
Top Of Cement	SURFACE	5 Min		Cement Returns	45	Actual Displacement	33.3	Treatment	
Frac Gradient		15 Min		Spacers	10	Load and Breakdown		Total Job	132.8
Rates									
Circulating	RIG	Mixing	3	Displacement	3	Avg. Job			3
Cement Left In Pipe	Amount	43.9 ft	Reason	Shoe Joint					
Frac Ring # 1 @	ID	Frac ring # 2 @	ID	Frac Ring # 3 @	ID	Frac Ring # 4 @	ID		
The Information Stated Herein Is Correct				Customer Representative Signature					

### The Road to Excellence Starts with Safety

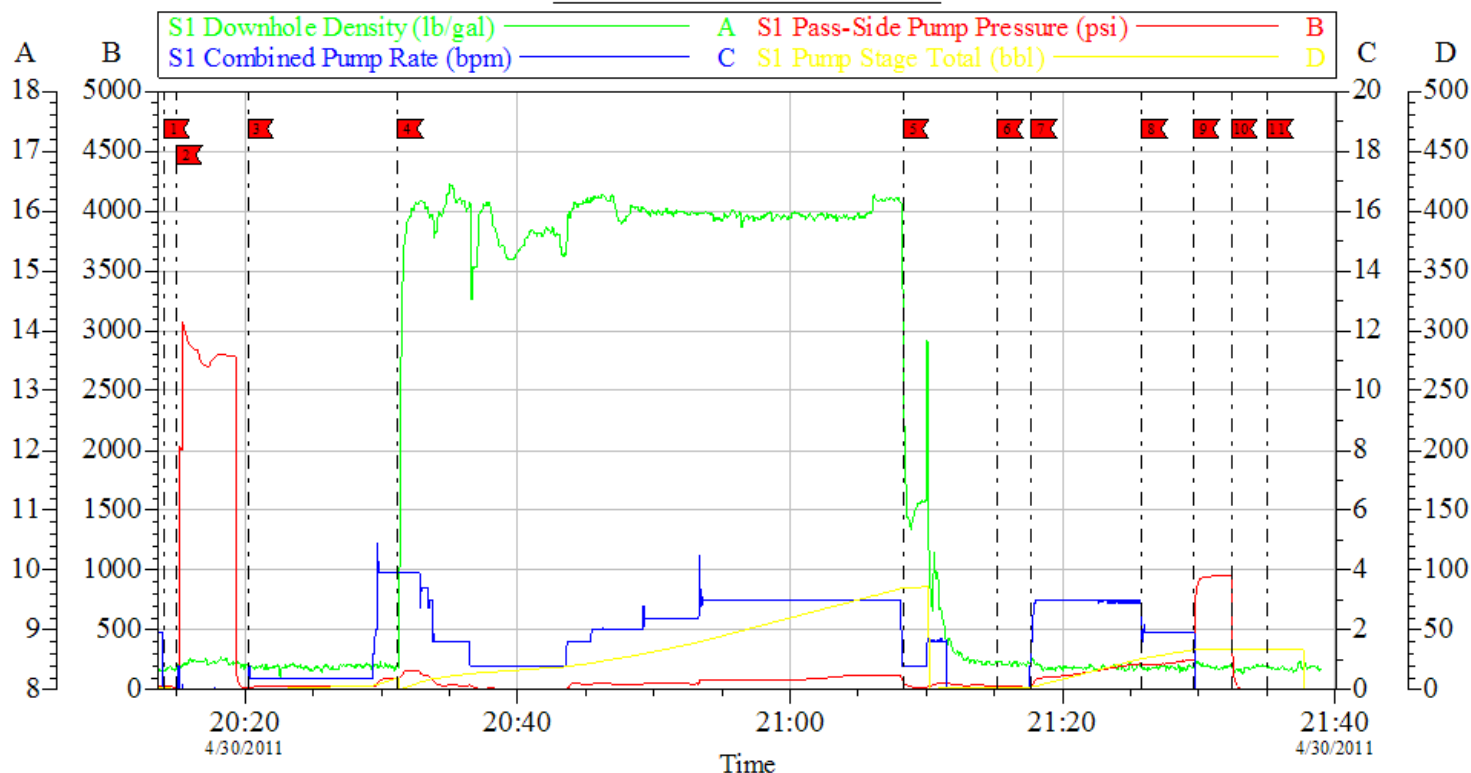
Sold To #: 345114	Ship To #: 345114	Quote #:	Sales Order #: 8141379
Customer: SAMSON RESOURCES CORP - EBUS		Customer Rep:	
Well Name: Southern Ute	Well #: 33-8-28 #6A	API/UWI #: 05067098430000	
Field: IGNACIO BLANCO	City (SAP): TULSA	County/Parish: La Plata	State: Colorado
Legal Description: Section 28 Township 33N Range 8W			
Lat: N 0 deg. OR N 0 deg. 0 min. 0 secs.		Long: E 0 deg. OR E 0 deg. 0 min. 0 secs.	
Contractor: AZTEC WELL SERVICE	Rig/Platform Name/Num: AWS 507		
Job Purpose: Cement Surface Casing			Ticket Amount:
Well Type: Development Well		Job Type: Cement Surface Casing	
Sales Person: SCOTT, KYLE	Srvs Supervisor: ARNOLD, EDWARD	MBU ID Emp #: 439784	

Activity Description	Date/Time	Cht #	Rate bbl/min	Volume bbl		Pressure psig		Comments
				Stage	Total	Tubing	Casing	
Call Out	04/30/2011 10:00							
Pre-Convoy Safety Meeting	04/30/2011 11:45							Including entire cement crew
Crew Leave Yard	04/30/2011 12:00							
Arrive At Loc	04/30/2011 13:30							Rig still drilling.
Assessment Of Location Safety Meeting	04/30/2011 18:30							
Pre-Rig Up Safety Meeting	04/30/2011 19:00							Including entire cement crew

Rig-Up Equipment	04/30/2011 19:10							1 Elite # 8; 1 660 bulk truck; 1 400 bulk truck; 1 hard line from pump to floor; 1 line to rig tank; 1 8 5/8 compact head.
Rig-Up Completed	04/30/2011 19:30							
Pre-Job Safety Meeting	04/30/2011 19:45							Including everyone on location
Start Job	04/30/2011 20:10							TD 583; TP 573.86; SJ 43.97; OH 12.25; CASING 8 5/8 24# K-55; MUD 9.5ppg; Float collar at 523'.
Other	04/30/2011 20:13		2	2			30.0	Fill lines with fresh water.
Pressure Test	04/30/2011 20:14						2791.0	PSI test good, no leaks.
Pump Spacer 1	04/30/2011 20:20		4	10			96.0	10 BBL fresh water.
Pump Cement	04/30/2011 20:31		3	89.39			101.0	405 SKs Surface cement, 15.8 ppg; 1.17 cf3; 5 gal/sk.
Activity Description	Date/Time	Cht #	Rate bbl/min	Volume bbl		Pressure psig		Comments
				Stage	Total	Tubing	Casing	
Shutdown	04/30/2011 21:08							
Drop Plug	04/30/2011 21:15							Plug left container.
Pump Displacement	04/30/2011 21:17		3	23.7			200.0	Fresh Water Displacement
Slow Rate	04/30/2011 21:25		2	10			204.0	Slow rate last ten BBLs
Bump Plug	04/30/2011 21:29				33.7		900.0	Bumped plug took 500 psi over.
Check Floats	04/30/2011 21:32							Floats held. .75 BBL back.
End Job	04/30/2011 21:34							
Pre-Rig Down Safety Meeting	04/30/2011 21:40							Including entire cement crew.
Rig-Down Equipment	04/30/2011 21:45							
Rig-Down Completed	04/30/2011 22:30							
Pre-Convoy Safety Meeting	04/30/2011 22:45							Including entire cement crew.
Depart Location for Service Center or Other Site	04/30/2011 23:00							

Other	04/30/2011 23:00							Thank You for using Halliburton. Ed Arnold and crew.
-------	---------------------	--	--	--	--	--	--	--

**SAMSON**  
**8 5/8 SURFACE**  
**SOUTHERN UTE 33-8-28 #6A**



Local Event Log			
START JOB	20:14:04	TEST LINES	20:14:58
PUMP CEMENT	20:31:12	SHUT DOWN	21:08:19
H2O DISPLACEMENT	21:17:42	SLOW RATE	21:25:49
CHECK FLOATS	21:32:25	END JOB	21:35:02
H2O SPACER	20:20:12	DROP PLUG	21:15:15
		BUMP PLUG	21:29:38

Customer:	Job Date:	30-Apr-2011	Sales Order #:	8141379
Well Description:	Job Type:		ADC Used:	
Company Rep:	Cement Supervisor:		Elite #:	

OptiCem v6.4.8  
30-Apr-11 21:57

