

BILL BARRETT CORP

GARFIELD COUNTY, COLORADO NAD 1983

Epperly NWSW-23-692

Epperly 13D-23-692

Wellbore #1

Plan: Design #1

Standard Planning Report

28 June, 2011

Bill Barrett Corp

Planning Report

Database:	Compass	Local Co-ordinate Reference:	Well Epperly 13D-23-692
Company:	BILL BARRETT CORP	TVD Reference:	WELL @ 5853.00ft (Original Well Elev)
Project:	GARFIELD COUNTY, COLORADO NAD 1983	MD Reference:	WELL @ 5853.00ft (Original Well Elev)
Site:	Epperly NWSW-23-692	North Reference:	True
Well:	Epperly 13D-23-692	Survey Calculation Method:	Minimum Curvature
Wellbore:	Wellbore #1		
Design:	Design #1		

Project	GARFIELD COUNTY, COLORADO NAD 1983		
Map System:	US State Plane 1983	System Datum:	Mean Sea Level
Geo Datum:	North American Datum 1983		
Map Zone:	Colorado Central Zone		

Site	Epperly NWSW-23-692		
Site Position:		Northing:	1,618,446.580 ft
From:	Lat/Long	Easting:	2,396,102.855 ft
Position Uncertainty:	0.00 ft	Slot Radius:	"
		Latitude:	39° 30' 42.772 N
		Longitude:	107° 38' 26.3004 W
		Grid Convergence:	-1.35 °

Well	Epperly 13D-23-692		
Well Position	+N/-S	-8.75 ft	Northing:
	+E/-W	0.00 ft	Easting:
Position Uncertainty		0.00 ft	Wellhead Elevation:
			Latitude:
			Longitude:
			Ground Level:

Wellbore	Wellbore #1				
Magnetics	Model Name	Sample Date	Declination (°)	Dip Angle (°)	Field Strength (nT)
	IGRF200510	12/31/2009	10.36	65.87	52,481

Design	Design #1			
Audit Notes:				
Version:	Phase:	PROTOTYPE	Tie On Depth:	0.00
Vertical Section:	Depth From (TVD) (ft)	+N/-S (ft)	+E/-W (ft)	Direction (°)
	0.00	0.00	0.00	290.18

Plan Sections										
Measured Depth (ft)	Inclination (°)	Azimuth (°)	Vertical Depth (ft)	+N/-S (ft)	+E/-W (ft)	Dogleg Rate (°/100ft)	Build Rate (°/100ft)	Turn Rate (°/100ft)	TFO (°)	Target
0.00	0.00	0.00	0.00	0.00	0.00	0.00	0.00	0.00	0.00	
770.00	0.00	0.00	770.00	0.00	0.00	0.00	0.00	0.00	0.00	
867.77	2.44	290.18	867.74	0.72	-1.96	2.50	2.50	0.00	290.18	
5,516.37	2.44	290.18	5,512.11	69.11	-188.03	0.00	0.00	0.00	0.00	
5,679.31	0.00	0.00	5,675.00	70.31	-191.29	1.50	-1.50	0.00	180.00	
7,679.31	0.00	0.00	7,675.00	70.31	-191.29	0.00	0.00	0.00	0.00	Epperly 13D-23-692

Bill Barrett Corp

Planning Report

Database:	Compass	Local Co-ordinate Reference:	Well Epperly 13D-23-692
Company:	BILL BARRETT CORP	TVD Reference:	WELL @ 5853.00ft (Original Well Elev)
Project:	GARFIELD COUNTY, COLORADO NAD 1983	MD Reference:	WELL @ 5853.00ft (Original Well Elev)
Site:	Epperly NWSW-23-692	North Reference:	True
Well:	Epperly 13D-23-692	Survey Calculation Method:	Minimum Curvature
Wellbore:	Wellbore #1		
Design:	Design #1		

Planned Survey										
Measured Depth (ft)	Inclination (°)	Azimuth (°)	Vertical Depth (ft)	+N/-S (ft)	+E/-W (ft)	Vertical Section (ft)	Dogleg Rate (°/100ft)	Build Rate (°/100ft)	Turn Rate (°/100ft)	
0.00	0.00	0.00	0.00	0.00	0.00	0.00	0.00	0.00	0.00	
100.00	0.00	0.00	100.00	0.00	0.00	0.00	0.00	0.00	0.00	
200.00	0.00	0.00	200.00	0.00	0.00	0.00	0.00	0.00	0.00	
300.00	0.00	0.00	300.00	0.00	0.00	0.00	0.00	0.00	0.00	
400.00	0.00	0.00	400.00	0.00	0.00	0.00	0.00	0.00	0.00	
500.00	0.00	0.00	500.00	0.00	0.00	0.00	0.00	0.00	0.00	
600.00	0.00	0.00	600.00	0.00	0.00	0.00	0.00	0.00	0.00	
700.00	0.00	0.00	700.00	0.00	0.00	0.00	0.00	0.00	0.00	
770.00	0.00	0.00	770.00	0.00	0.00	0.00	0.00	0.00	0.00	
800.00	0.75	290.18	800.00	0.07	-0.18	0.20	2.50	2.50	0.00	
867.77	2.44	290.18	867.74	0.72	-1.96	2.08	2.50	2.50	0.00	
900.00	2.44	290.18	899.94	1.19	-3.25	3.46	0.00	0.00	0.00	
1,000.00	2.44	290.18	999.85	2.66	-7.25	7.72	0.00	0.00	0.00	
1,100.00	2.44	290.18	1,099.76	4.14	-11.25	11.99	0.00	0.00	0.00	
1,200.00	2.44	290.18	1,199.67	5.61	-15.26	16.25	0.00	0.00	0.00	
1,300.00	2.44	290.18	1,299.58	7.08	-19.26	20.52	0.00	0.00	0.00	
1,400.00	2.44	290.18	1,399.49	8.55	-23.26	24.78	0.00	0.00	0.00	
1,500.00	2.44	290.18	1,499.40	10.02	-27.26	29.05	0.00	0.00	0.00	
1,600.00	2.44	290.18	1,599.30	11.49	-31.27	33.31	0.00	0.00	0.00	
1,700.00	2.44	290.18	1,699.21	12.96	-35.27	37.58	0.00	0.00	0.00	
1,800.00	2.44	290.18	1,799.12	14.43	-39.27	41.84	0.00	0.00	0.00	
1,900.00	2.44	290.18	1,899.03	15.91	-43.27	46.10	0.00	0.00	0.00	
2,000.00	2.44	290.18	1,998.94	17.38	-47.28	50.37	0.00	0.00	0.00	
2,100.00	2.44	290.18	2,098.85	18.85	-51.28	54.63	0.00	0.00	0.00	
2,200.00	2.44	290.18	2,198.76	20.32	-55.28	58.90	0.00	0.00	0.00	
2,300.00	2.44	290.18	2,298.67	21.79	-59.29	63.16	0.00	0.00	0.00	
2,400.00	2.44	290.18	2,398.58	23.26	-63.29	67.43	0.00	0.00	0.00	
2,500.00	2.44	290.18	2,498.49	24.73	-67.29	71.69	0.00	0.00	0.00	
2,600.00	2.44	290.18	2,598.39	26.20	-71.29	75.96	0.00	0.00	0.00	
2,700.00	2.44	290.18	2,698.30	27.68	-75.30	80.22	0.00	0.00	0.00	
2,800.00	2.44	290.18	2,798.21	29.15	-79.30	84.49	0.00	0.00	0.00	
2,900.00	2.44	290.18	2,898.12	30.62	-83.30	88.75	0.00	0.00	0.00	
3,000.00	2.44	290.18	2,998.03	32.09	-87.30	93.01	0.00	0.00	0.00	
3,100.00	2.44	290.18	3,097.94	33.56	-91.31	97.28	0.00	0.00	0.00	
3,200.00	2.44	290.18	3,197.85	35.03	-95.31	101.54	0.00	0.00	0.00	
3,300.00	2.44	290.18	3,297.76	36.50	-99.31	105.81	0.00	0.00	0.00	
3,400.00	2.44	290.18	3,397.67	37.97	-103.32	110.07	0.00	0.00	0.00	
3,500.00	2.44	290.18	3,497.58	39.44	-107.32	114.34	0.00	0.00	0.00	
3,600.00	2.44	290.18	3,597.48	40.92	-111.32	118.60	0.00	0.00	0.00	
3,700.00	2.44	290.18	3,697.39	42.39	-115.32	122.87	0.00	0.00	0.00	
3,800.00	2.44	290.18	3,797.30	43.86	-119.33	127.13	0.00	0.00	0.00	
3,900.00	2.44	290.18	3,897.21	45.33	-123.33	131.40	0.00	0.00	0.00	
4,000.00	2.44	290.18	3,997.12	46.80	-127.33	135.66	0.00	0.00	0.00	
4,100.00	2.44	290.18	4,097.03	48.27	-131.33	139.92	0.00	0.00	0.00	
4,200.00	2.44	290.18	4,196.94	49.74	-135.34	144.19	0.00	0.00	0.00	
4,300.00	2.44	290.18	4,296.85	51.21	-139.34	148.45	0.00	0.00	0.00	
4,400.00	2.44	290.18	4,396.76	52.69	-143.34	152.72	0.00	0.00	0.00	
4,500.00	2.44	290.18	4,496.67	54.16	-147.34	156.98	0.00	0.00	0.00	
4,600.00	2.44	290.18	4,596.58	55.63	-151.35	161.25	0.00	0.00	0.00	
4,700.00	2.44	290.18	4,696.48	57.10	-155.35	165.51	0.00	0.00	0.00	
4,800.00	2.44	290.18	4,796.39	58.57	-159.35	169.78	0.00	0.00	0.00	
4,900.00	2.44	290.18	4,896.30	60.04	-163.36	174.04	0.00	0.00	0.00	
5,000.00	2.44	290.18	4,996.21	61.51	-167.36	178.30	0.00	0.00	0.00	

Bill Barrett Corp

Planning Report

Database:	Compass	Local Co-ordinate Reference:	Well Epperly 13D-23-692
Company:	BILL BARRETT CORP	TVD Reference:	WELL @ 5853.00ft (Original Well Elev)
Project:	GARFIELD COUNTY, COLORADO NAD 1983	MD Reference:	WELL @ 5853.00ft (Original Well Elev)
Site:	Epperly NWSW-23-692	North Reference:	True
Well:	Epperly 13D-23-692	Survey Calculation Method:	Minimum Curvature
Wellbore:	Wellbore #1		
Design:	Design #1		

Planned Survey

Measured Depth (ft)	Inclination (°)	Azimuth (°)	Vertical Depth (ft)	+N/-S (ft)	+E/-W (ft)	Vertical Section (ft)	Dogleg Rate (°/100ft)	Build Rate (°/100ft)	Turn Rate (°/100ft)
5,100.00	2.44	290.18	5,096.12	62.98	-171.36	182.57	0.00	0.00	0.00
5,200.00	2.44	290.18	5,196.03	64.46	-175.36	186.83	0.00	0.00	0.00
5,300.00	2.44	290.18	5,295.94	65.93	-179.37	191.10	0.00	0.00	0.00
5,400.00	2.44	290.18	5,395.85	67.40	-183.37	195.36	0.00	0.00	0.00
5,500.00	2.44	290.18	5,495.76	68.87	-187.37	199.63	0.00	0.00	0.00
5,516.37	2.44	290.18	5,512.11	69.11	-188.03	200.33	0.00	0.00	0.00
5,600.00	1.19	290.18	5,595.70	70.02	-190.52	202.98	1.50	-1.50	0.00
5,679.31	0.00	0.00	5,675.00	70.31	-191.29	203.80	1.50	-1.50	0.00
5,700.00	0.00	0.00	5,695.69	70.31	-191.29	203.80	0.00	0.00	0.00
5,800.00	0.00	0.00	5,795.69	70.31	-191.29	203.80	0.00	0.00	0.00
5,900.00	0.00	0.00	5,895.69	70.31	-191.29	203.80	0.00	0.00	0.00
6,000.00	0.00	0.00	5,995.69	70.31	-191.29	203.80	0.00	0.00	0.00
6,100.00	0.00	0.00	6,095.69	70.31	-191.29	203.80	0.00	0.00	0.00
6,200.00	0.00	0.00	6,195.69	70.31	-191.29	203.80	0.00	0.00	0.00
6,300.00	0.00	0.00	6,295.69	70.31	-191.29	203.80	0.00	0.00	0.00
6,400.00	0.00	0.00	6,395.69	70.31	-191.29	203.80	0.00	0.00	0.00
6,500.00	0.00	0.00	6,495.69	70.31	-191.29	203.80	0.00	0.00	0.00
6,600.00	0.00	0.00	6,595.69	70.31	-191.29	203.80	0.00	0.00	0.00
6,700.00	0.00	0.00	6,695.69	70.31	-191.29	203.80	0.00	0.00	0.00
6,800.00	0.00	0.00	6,795.69	70.31	-191.29	203.80	0.00	0.00	0.00
6,900.00	0.00	0.00	6,895.69	70.31	-191.29	203.80	0.00	0.00	0.00
7,000.00	0.00	0.00	6,995.69	70.31	-191.29	203.80	0.00	0.00	0.00
7,100.00	0.00	0.00	7,095.69	70.31	-191.29	203.80	0.00	0.00	0.00
7,200.00	0.00	0.00	7,195.69	70.31	-191.29	203.80	0.00	0.00	0.00
7,300.00	0.00	0.00	7,295.69	70.31	-191.29	203.80	0.00	0.00	0.00
7,400.00	0.00	0.00	7,395.69	70.31	-191.29	203.80	0.00	0.00	0.00
7,500.00	0.00	0.00	7,495.69	70.31	-191.29	203.80	0.00	0.00	0.00
7,600.00	0.00	0.00	7,595.69	70.31	-191.29	203.80	0.00	0.00	0.00
7,679.31	0.00	0.00	7,675.00	70.31	-191.29	203.80	0.00	0.00	0.00

Casing Points

Measured Depth (ft)	Vertical Depth (ft)	Name	Casing Diameter (")	Hole Diameter (")
770.00	770.00	9 5/8"	9-5/8	12-1/4

Formations

Measured Depth (ft)	Vertical Depth (ft)	Name	Lithology	Dip (°)	Dip Direction (°)
3,687.59	3,685.00	Mesaverde		0.00	
4,588.41	4,585.00	Price Coal		0.00	
5,379.13	5,375.00	Top Gas		0.00	
7,379.31	7,375.00	Rollins		0.00	
7,679.31	7,675.00	TD		0.00	

WELL DETAILS: Epperly 13D-23-692

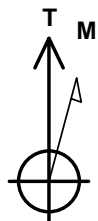
+N/-S	+E/-W	Northing	Easting	Ground Level:	Latitude	Longitude	Slot
0.00	0.00	1618437.832	2396102.649	0.00	39° 30' 42.685 N	107° 38' 26.3004 W	

SECTION DETAILS

Sec	MD	Inc	Azi	TVD	+N/-S	+E/-W	DLeg	TFace	VSec	Target
1	0.00	0.00	0.00	0.00	0.00	0.00	0.00	0.00	0.00	
2	770.00	0.00	0.00	770.00	0.00	0.00	0.00	0.00	0.00	
3	867.77	2.44	290.18	867.74	0.72	-1.96	2.50	290.18	2.08	
4	5516.37	2.44	290.18	5512.11	69.11	-188.03	0.00	0.00	200.33	
5	5679.31	0.00	0.00	5675.00	70.31	-191.29	1.50	180.00	203.80	
6	7679.31	0.00	0.00	7675.00	70.31	-191.29	0.00	0.00	203.80	Epperly 13D-23-692 (TD)

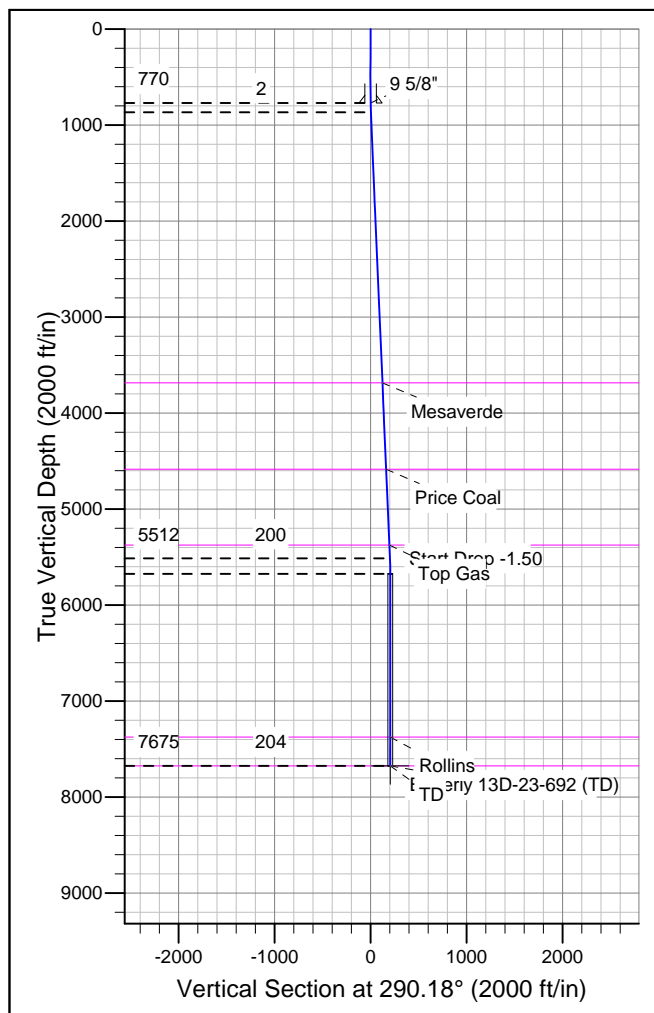
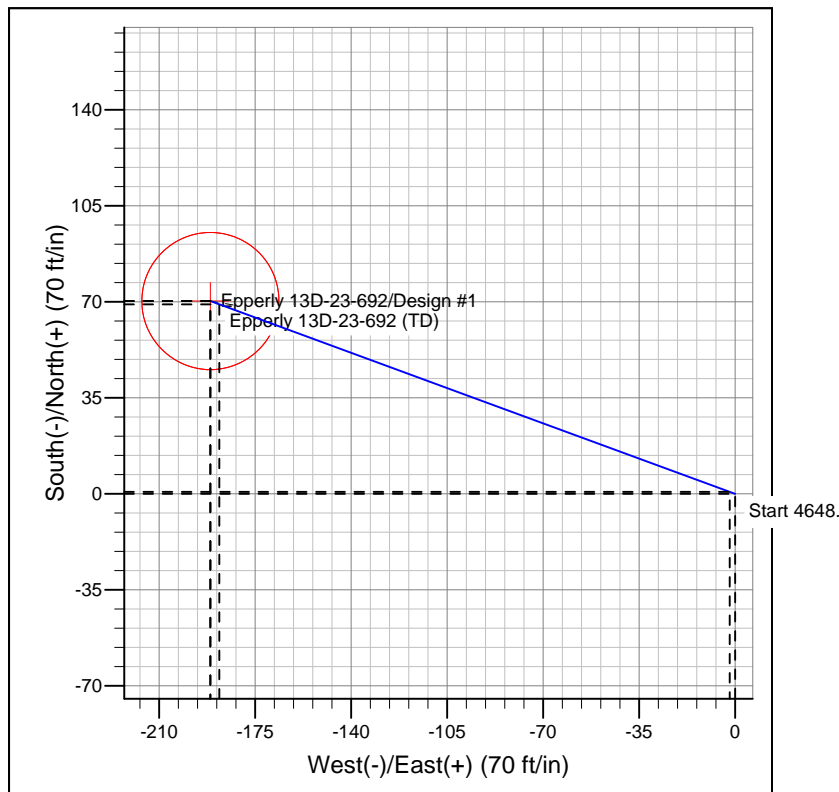
WELLBORE TARGET DETAILS

Name	TVD	+N/-S	+E/-W	Shape
Epperly 13D-23-692 (TD)	7675.00	70.31	-191.29	Circle (Radius: 25.00)



Azimuths to True North
Magnetic North: 10.36°

Magnetic Field
Strength: 52481.0snT
Dip Angle: 65.87°
Date: 12/31/2009
Model: IGRF200510



FORMATION TOP DETAILS

TVDPath	MDPath	Formation
3685.00	3687.59	Mesaverde
4585.00	4588.41	Price Coal
5375.00	5379.13	Top Gas
7375.00	7379.31	Rollins
7675.00	7679.31	TD

REFERENCE INFORMATION

Co-ordinate (N/E) Reference: Well Epperly 13D-23-692, True North
Vertical (TVD) Reference: WELL @ 5853.00ft (Original Well Elev)
Section (VS) Reference: Slot - (0.00N, 0.00E)
Measured Depth Reference: WELL @ 5853.00ft (Original Well Elev)
Calculation Method: Minimum Curvature