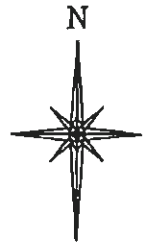
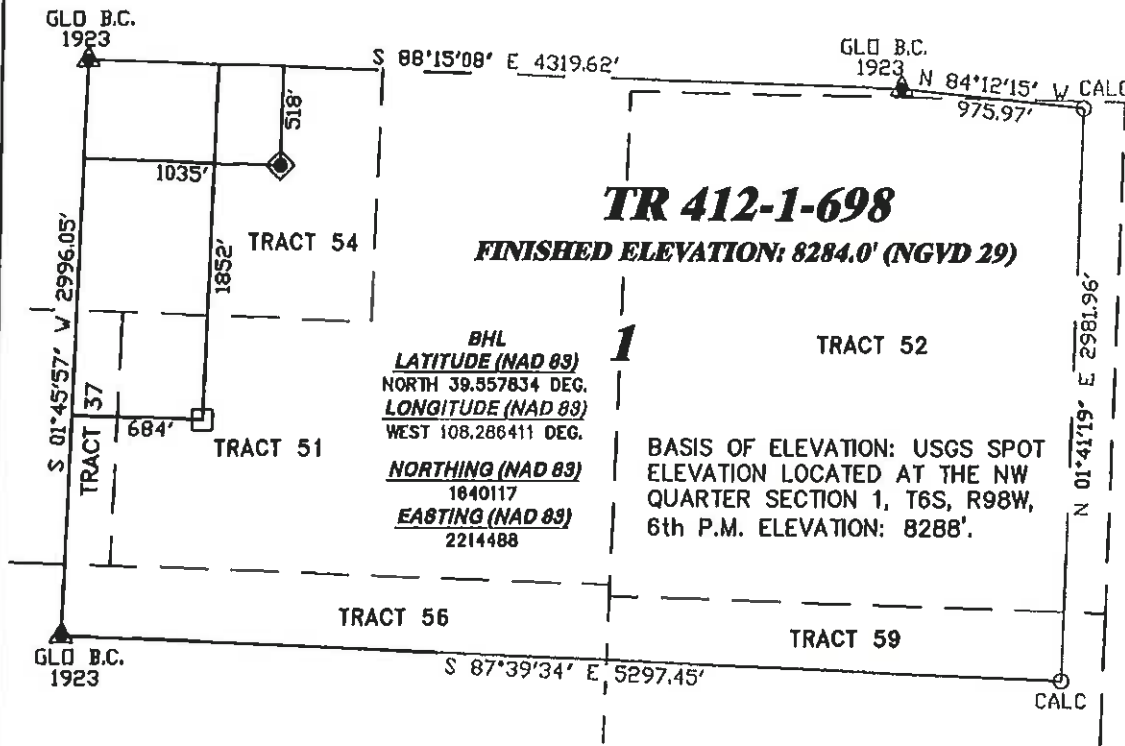


**R. 98 W.**



SCALE 1" = 1000'

**T. 6 S.**



**NOTES**

GPS OPERATOR PATRICK McLINSKEY  
OBSERVED A PDOP OF 1.0.  
ALL GPS OBSERVATIONS ARE IN  
COMPLIANCE WITH COGCC RULE No.215.

**BASIS OF BEARING/DATUM**  
SPCS CO CENTRAL NAD 27  
BASED ON NGS TRIANGULATION  
STATION "SHALE"

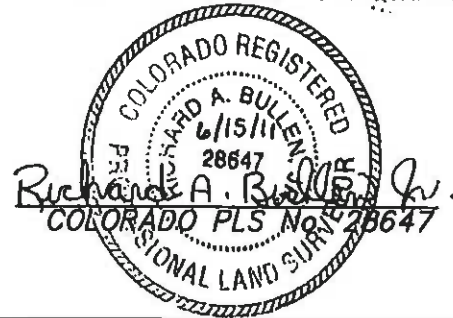


**SURVEYOR'S STATEMENT**

I, RICHARD A. BULLEN JR., AN EMPLOYEE AND AGENT ON BEHALF OF D.R. GRIFFIN & ASSOCIATES, INC. HEREBY STATE: THE PLAT HEREON IS A CORRECT REPRESENTATION OF A SURVEY MADE UNDER MY SUPERVISION ON JANUARY 5, 2009 AND THAT THIS PLAT CORRECTLY SHOWS THE LOCATION OF CHEVRON TR 412-1-698 AS STAKED ON THE GROUND.  
FIELD SURVEY DATUM IS NAD 27 COLORADO CENTRAL. VALUES HAVE BEEN CONVERTED TO NAD 83 COLORADO CENTRAL (X,Y) FOR PURPOSES OF THIS PLAT.

**LEGEND**

- ◆ WELL LOCATION
- BOTTOM HOLE LOC. (APPROX)
- FOUND MONUMENT
- ▲ PREVIOUSLY FOUND MONUMENT



TR 11-1-698 PAD



**RIFFIN & ASSOCIATES, INC.**  
1414 ELK ST., ROCK SPRINGS, WY 82901

(307) 382-5028

**PLAT OF DRILLING LOCATION  
FOR  
WILLIAMS PRODUCTION RMT COMPANY**

DRAWN: 4/8/10 - MMM

SCALE: 1" = 1000'

REVISED: 6/15/11 - RAB

DRG JOB No. 14324

REVISED BOTTOM HOLE

PLAT 1

**518' F/NL & 1035' F/WL, SECTION 1,  
T. 6 S., R. 98 W., 6th P.M.  
GARFIELD COUNTY, COLORADO**