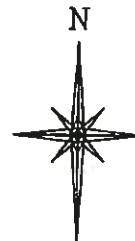
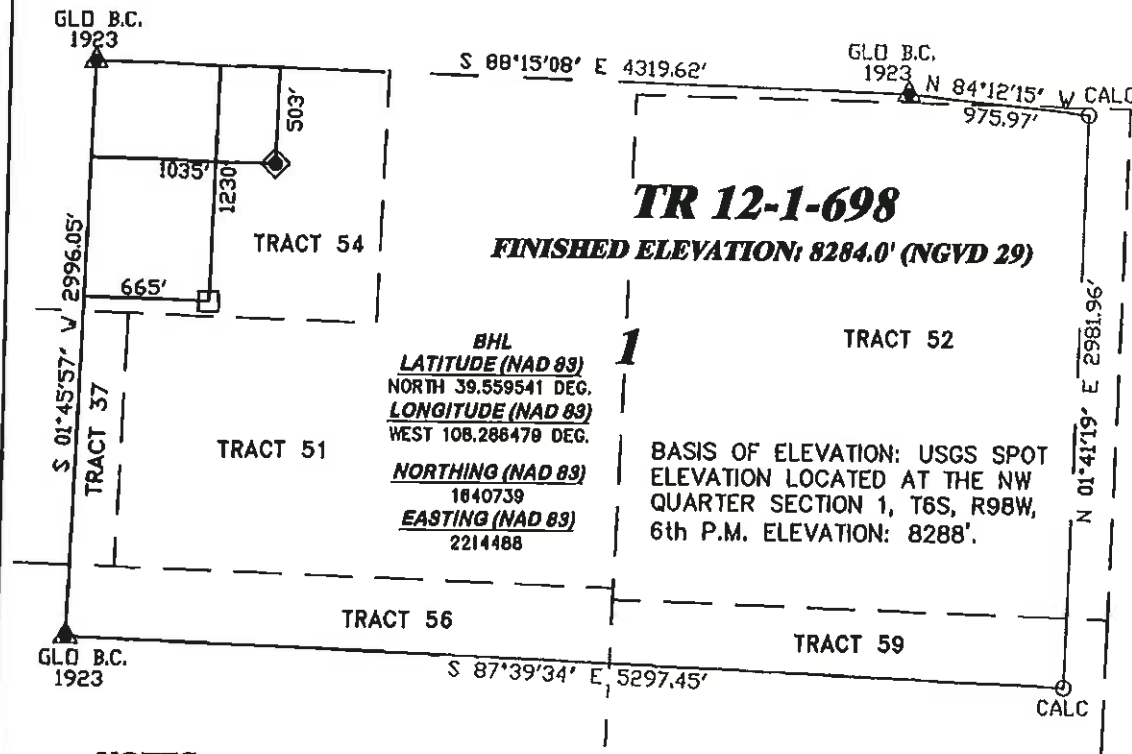


R. 98 W.



SCALE 1" = 1000'

T. 6 S.



LATITUDE (NAD 83)
NORTH 39.561536 DEG.
LONGITUDE (NAD 83)
WEST 108.285164 DEG.
NORTHING (NAD 83)
1641454.08
EASTING (NAD 83)
2214880.26

NOTES

GPS OPERATOR PATRICK McLINSKEY
OBSERVED A PDOP OF 1.0.
ALL GPS OBSERVATIONS ARE IN
COMPLIANCE WITH COGCC RULE No.215.

BASIS OF BEARING/DATUM
SPCS CO CENTRAL NAD 27
BASED ON NGS TRIANGULATION
STATION "SHALE"

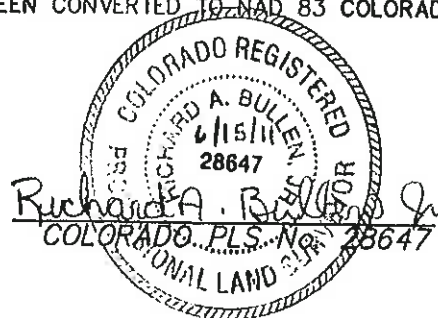


SURVEYOR'S STATEMENT

I, RICHARD A. BULLEN JR., AN EMPLOYEE AND AGENT ON BEHALF OF D.R. GRIFFIN & ASSOCIATES, INC. HEREBY STATE: THE PLAT HEREON IS A CORRECT REPRESENTATION OF A SURVEY MADE UNDER MY SUPERVISION ON JANUARY 5, 2009 AND THAT THIS PLAT CORRECTLY SHOWS THE LOCATION OF CHEVRON TR 12-1-698 AS STAKED ON THE GROUND.
FIELD SURVEY DATUM IS NAD 27 COLORADO CENTRAL. VALUES HAVE BEEN CONVERTED TO NAD 83 COLORADO CENTRAL (X,Y) FOR PURPOSES OF THIS PLAT.

LEGEND

- ◆ WELL LOCATION
- BOTTOM HOLE LOC. (APPROX)
- FOUND MONUMENT
- ▲ PREVIOUSLY FOUND MONUMENT



TR 11-1-698 PAD



DR GRIFFIN & ASSOCIATES, INC.
1414 ELK ST., ROCK SPRINGS, WY 82901

(307) 362-5028

**PLAT OF DRILLING LOCATION
FOR
WILLIAMS PRODUCTION RMT COMPANY**
**503' F/NL & 1035' F/WL, SECTION 1,
T. 6 S., R. 98 W., 6th P.M.
GARFIELD COUNTY, COLORADO**

DRAWN: 4/8/10 - MMM	SCALE: 1" = 1000'
REVISED: 8/16/11 - RAB	DRG JOB No. 14324
REVISED BOTTOM HOLE	PLAT 1