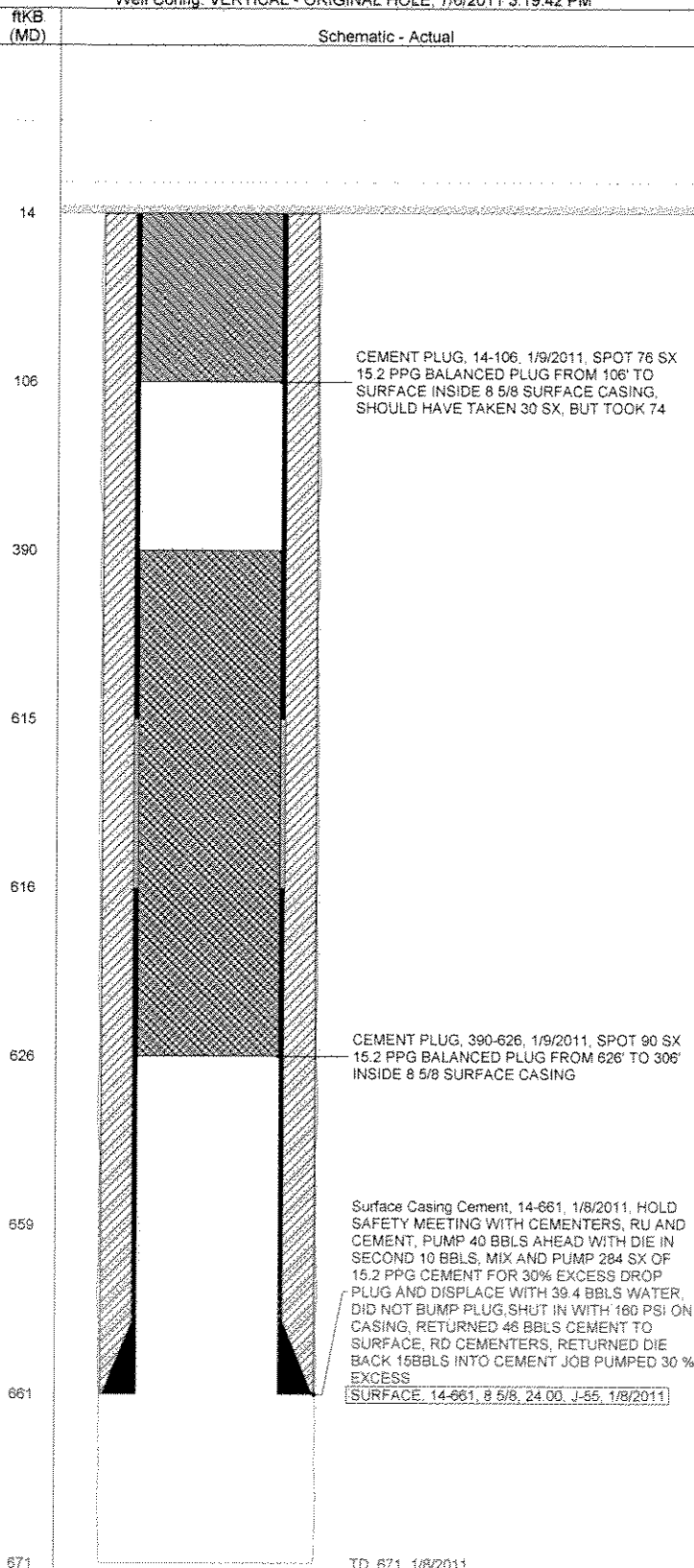


**Well Name: WELLS RANCH AA24-03**

Well Config: VERTICAL - ORIGINAL HOLE, 7/6/2011 3:19:42 PM



## Well Header

API		Business Unit		Spud Date		Well Configuration Type	
05-123-32779		WATTENBERG		1/7/2011		VERTICAL	
Orig KB Elev (ft)	KB - GL / ...	Quarter Quarter	Sec/Abs	Twn/Sur...	Range	P & A Date	
4,818.00	14	NENW	24	6N	63W	1/9/2011	

## Comment

CSG FAILURE /CODELL FAULTED OUT IN AA24-03

## Directions To Well

WCR 67 & 68, GO EAST 2/10THS, SOUTH 1.75 MILES, EAST 1.25, NORTH 1.5 INTO THE NE/4 OF SEC. 23, EAST 1/2 MILE, THEN NORTHEAST INTO LOCATION

## Bottom Hole Location

North-South Distance (ft)	From N or S Line	East-West Distance (ft)	From E or W Line
---------------------------	------------------	-------------------------	------------------

## PBTDs

Date	Depth (ftKB)	Method	Comment
------	--------------	--------	---------

## Wellbore Sections

Section	Size (in)	Act Top (ftKB)	Act Btm (ftKB)
SURFACE	12 1/4	14.0	671.0
PRODUCTION	7 7/8	671.0	

## Zone Statuses

Zone	Status Date	Status	Job
------	-------------	--------	-----

## Casing Strings

### SURFACE, 661.1ftKB

Casing Description	Run Date	String ...	String Wt...	String ...	Top (ftKB)	Set Depth ...
SURFACE	1/8/2011	8 5/8	24.00	J-55	14.0	661.1

### PRODUCTION, 6,923.0ftKB

Casing Description	Run Date	String ...	String Wt...	String ...	Top (ftKB)	Set Depth ...
PRODUCTION						6,923.0

## Cement

Description	Top (ftKB)	Bottom (ftKB)
CEMENT PLUG	14.0	106.0
Description	Top (ftKB)	Bottom (ftKB)
Surface Casing Cement	14.0	661.1
Description	Top (ftKB)	Bottom (ftKB)
CEMENT PLUG	390.0	626.0

## Tubing Components

Item Description	OD (in)	Wt (lbs/ft)	Grade	Jts	Len (ft)	Btm (ftKB)	Bottom Depth (TVD) (ftKB)
------------------	---------	-------------	-------	-----	----------	------------	---------------------------

## Perforation Data

Zone	Bnch/Stg	Entered Shot Total	Top (ftKB)	Btm (ftKB)	Date
------	----------	--------------------	------------	------------	------

## Other In Hole

Run Date	Description	OD (in)	Top (ftKB)	Btm (ftKB)
----------	-------------	---------	------------	------------

## Logs

Date	Type	Top (ftKB)	Btm (ftKB)
------	------	------------	------------