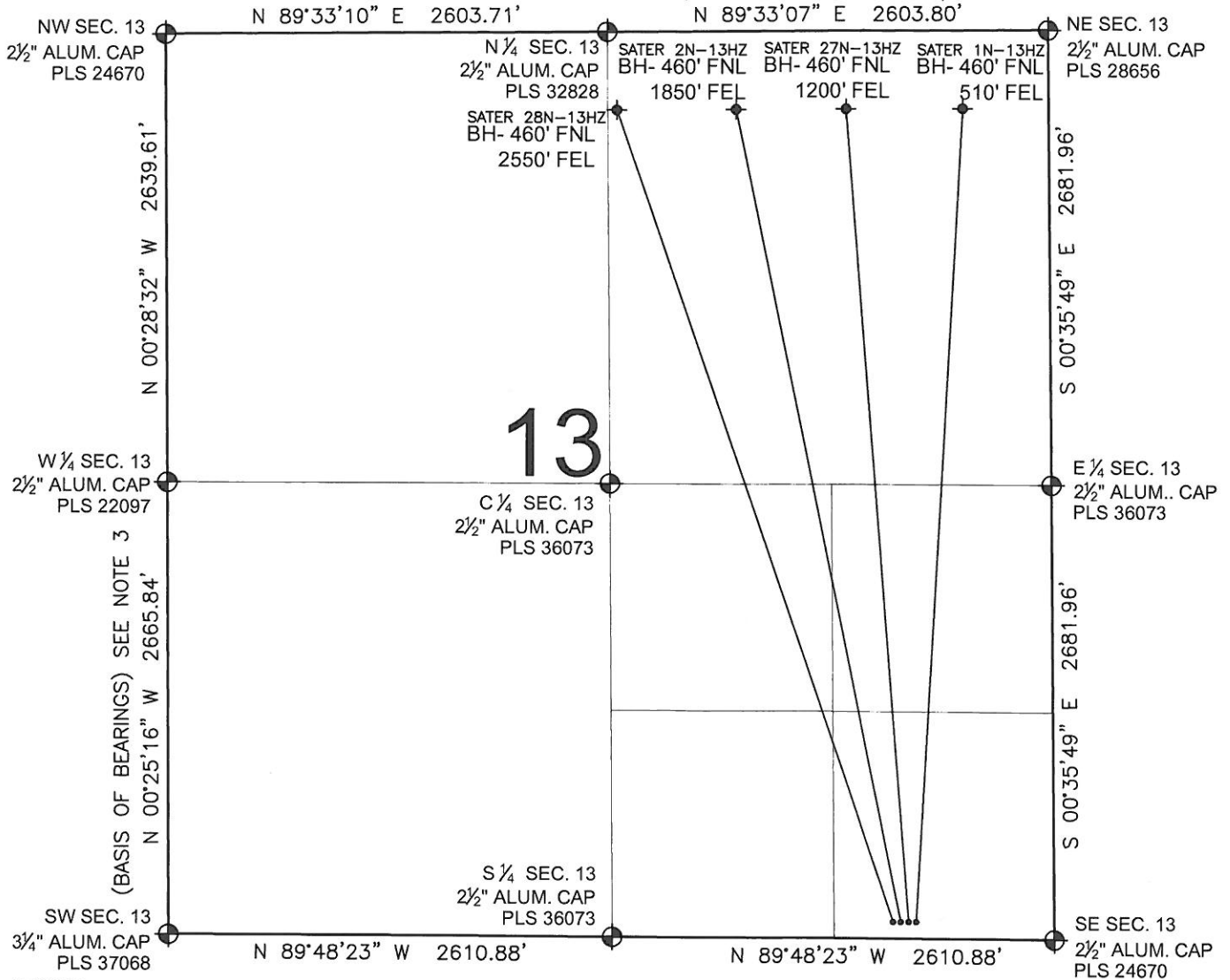


# PAD DRAWING: SATER 4 PAD

SECTION 13, TOWNSHIP 4 NORTH, RANGE 64 WEST, 6TH P.M.



## LEGEND

- ⊕ = EXISTING MONUMENT
- ⊕ = BOTTOM HOLE
- BH= BOTTOM HOLE
- = PROPOSED WELL
- ◆ = EXISTING WELL

## NOTES:

- THIS FIELD SURVEY CONFORMS TO THE MINIMUM STANDARDS SET BY THE C.O.G.C.C., RULE NO. 215
- HORIZONTAL POSITIONS AND ORTHOMETRIC ELEVATIONS SHOWN AT THE WELL HEAD, ARE BASED ON GPS-RTK POSITIONS DERIVED FROM MINIMUM 2-HOUR STATIC OBSERVATIONS CORRECTED BY THE NATIONAL GEODETIC SURVEY ONLINE POSITIONING USER SERVICE, O.P.U.S. DATUM: HORIZONTAL = NAD83/2007, VERTICAL = NAVD88
- THE BASIS OF BEARINGS ARE STATE PLANE COORDINATE SYSTEM GRID BEARINGS SHOWN HEREON BETWEEN THE DESCRIBED THE MONUMENTS SHOWN HEREON.
- GRID DISTANCES ARE SHOWN, AS MEASURED IN THE FIELD, WITH TIES TO WELLS MEASURED PERPENDICULAR TO SECTION LINES.

## NOTES:

- SATER 28N-13HZ TO BE AT 100' FSL, 954' FEL.
- BOTTOM HOLE AT 460' FNL & 2550' FEL.
- SATER 2N-13HZ TO BE AT 100' FSL, 930' FEL.
- BOTTOM HOLE AT 460' FNL & 1850' FEL.
- SATER 27N-13HZ TO BE AT 100' FSL, 906' FEL.
- BOTTOM HOLE AT 460' FNL & 1200' FEL.
- SATER 1N-13HZ TO BE AT 100' FSL, 882' FEL.
- BOTTOM HOLE AT 460' FNL & 510' FEL.

PREPARED BY:

**PFS**

Petroleum Field Services, LLC  
1801 W. 13th Ave.  
Denver, CO 80204



KERR-MCGEE OIL & GAS ONSHORE LP

FIELD DATE:  
04-29-11

DRAWING DATE:  
05-18-11

BY:  
SMF

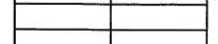
PAD NAME:  
SATER 4 PAD

SURFACE LOCATION:

WELD COUNTY, COLORADO  
SE 1/4 SE 1/4, SEC. 13, T4N, R64W



0 500 1000



SCALE: 1"=1000'