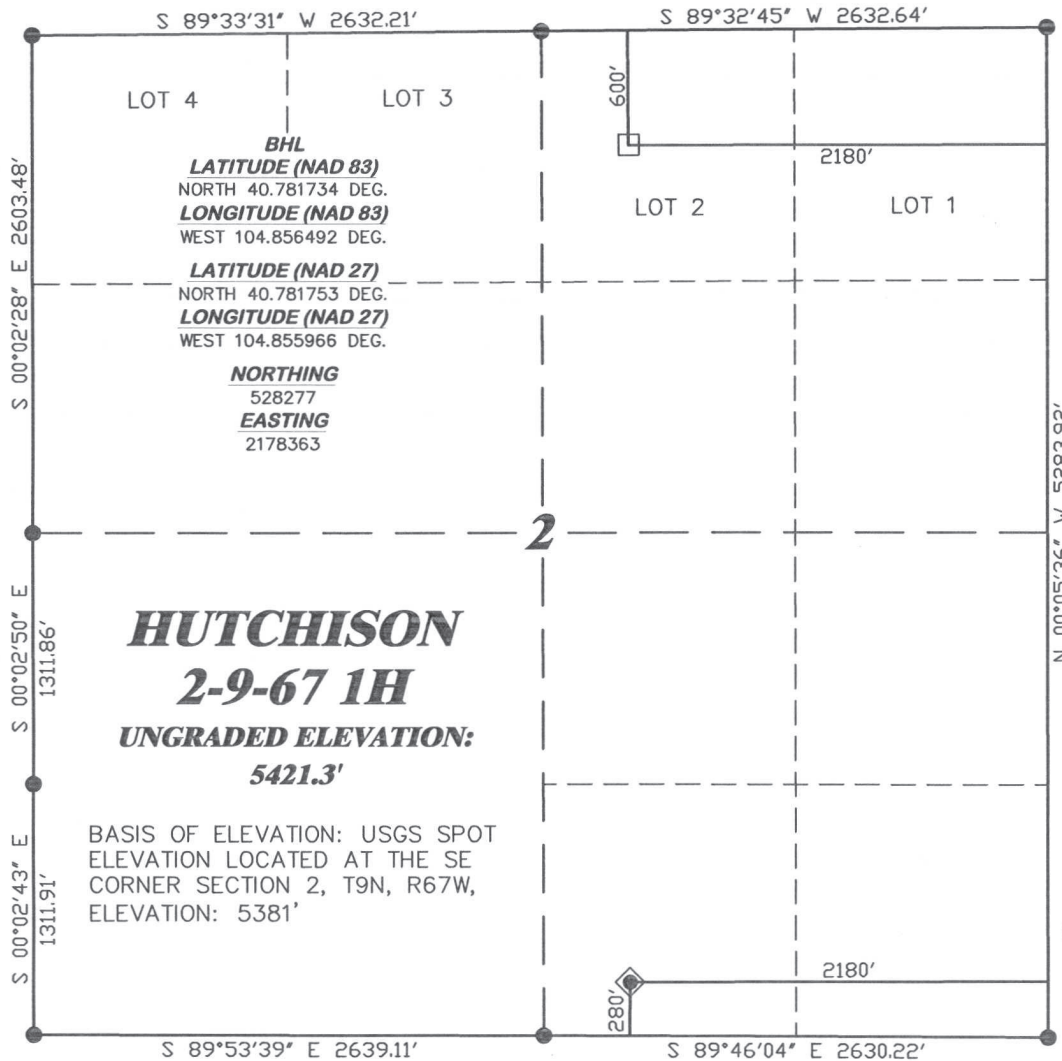


R. 67 W.



SCALE 1" = 1000'

T. 9 N.

LATITUDE (NAD 83)
NORTH 40.769719 DEG.
LONGITUDE (NAD 83)
WEST 104.856581 DEG.

LATITUDE (NAD 27)
NORTH 40.769737 DEG.
LONGITUDE (NAD 27)
WEST 104.856055 DEG.

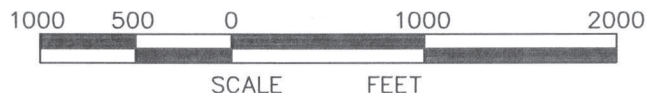
NORTHING
523899.34
EASTING
2178370.39

BASIS OF BEARING/DATUM
SPCS CO NORTH NAD 27
BASED ON NGS TRIANGULATION
STATION "DOVER"

NOTES

PRAIRIE LANDS
EXISTING FENCE LINE WITHIN
400' RADIUS OF WELL SITE.

GPS OPERATOR PAUL ORME
OBSERVED A PDOP OF 2.8.
ALL GPS OBSERVATIONS ARE IN
COMPLIANCE WITH COGCC RULE No.215.



SURVEYOR'S STATEMENT

I, CLEMENT R. WILLIAMS, OF ROCK SPRINGS, WYOMING, HEREBY STATE: THIS MAP WAS MADE FROM NOTES TAKEN DURING AN ACTUAL FIELD SURVEY DONE UNDER MY DIRECT SUPERVISION ON JUNE 22, 2011, AND THAT THIS PLAT CORRECTLY SHOWS THE LOCATION OF HUTCHISON 2-9-67 1H AS STAKED ON THE GROUND.

LEGEND

- ◆ WELL LOCATION
- BOTTOM HOLE LOC. (APPROX)
- FOUND MONUMENT
- ▲ PREVIOUSLY FOUND MONUMENT



(307) 362-5028

1414 ELK ST., ROCK SPRINGS, WY 82901

DRAWN: 6/20/11 - MMM

SCALE: 1" = 1000'

REVISED: 6/27/11 - MMM

DRG JOB No. 18649

REVISED SHL & BHL

EXHIBIT 1

**PLAT OF DRILLING LOCATION
FOR
CHESAPEAKE ENERGY, LLC.**

**280' F/SL & 2180' F/EL, SWSE, SECTION 2,
T. 9 N., R. 67 W., 6th P.M.
WELD COUNTY, COLORADO**